

This Owner's Manual is provided and hosted by [Appliance Factory Parts](#).



Thermos 461742204 Owner's Manual

[Shop genuine replacement parts for Thermos
461742204](#)

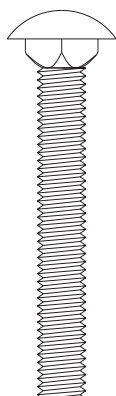


[Find Your Thermos Grill Parts - Select From 1975 Models](#)

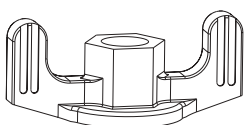
----- Manual continues below -----

1

Items to Assemble:
 2 Leg Assemblies
 1 Bottom Shelf
 6 Carriage Bolts
 6 Wing Nuts



Qty: 6

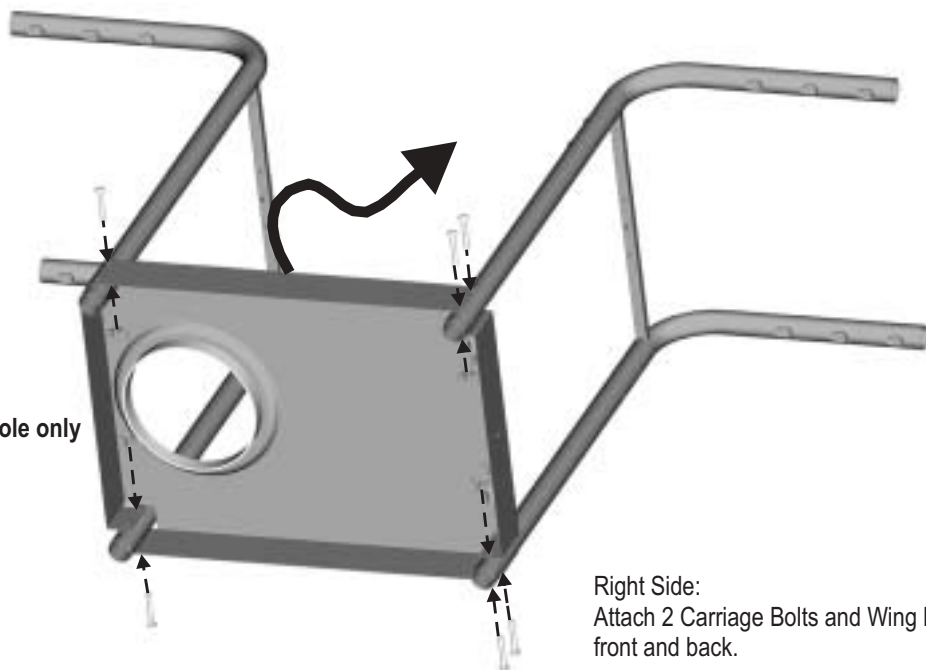


Qty: 6

Left Side:
 Place 1 Carriage Bolt
 and Wing Nut in **upper hole only**

Place Bottom Shelf and Legs as shown.

After assembling tighten all Wing Nuts.



Right Side:
 Attach 2 Carriage Bolts and Wing Nuts in
 front and back.

4

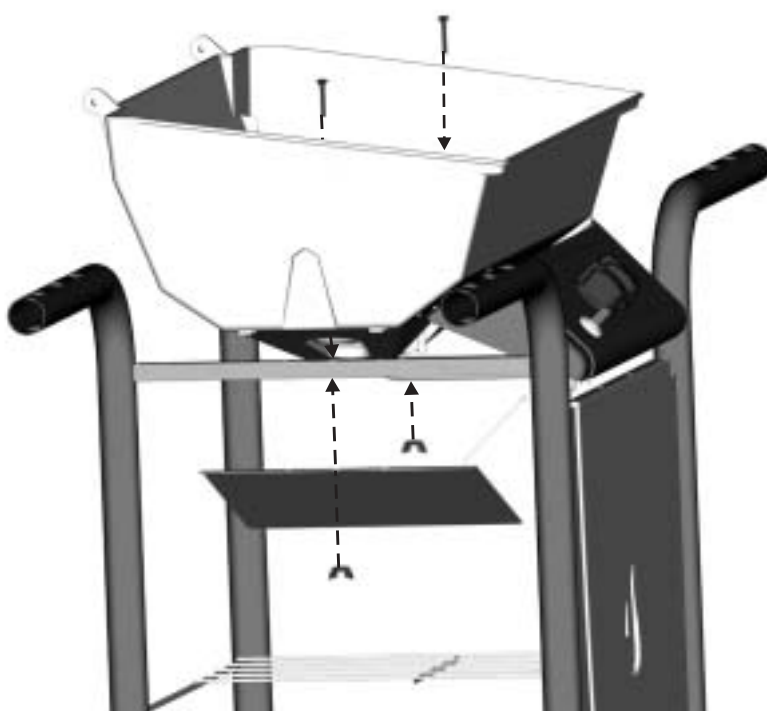
Items to Assemble:
 1 Grill Bottom
 1 Heat Shield
 2 Carriage Bolts
 2 Wing Nuts
 2 Control Knobs



Qty: 2



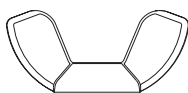
Qty: 2



7

Items to Assemble:
 1 Sideburner Body
 1 Sideburner Frame
 1 Carriage Bolt
 1 Wing Nut
 1 Crown Screw or Wing Nut

Join Sideburner Body and Frame. In back center hole attach with Carriage Bolt and Wing Nut.
 In front use a Crown Screw or Wing Nut to attach Toolholder and Sideburner Body.



Qty: 1

