



# Master Mariner™ Stainless Steel 2-Burner Propane Grill Use, Care & Assembly Manual With Lighting Instructions

**Model 9972 Series**

**ASSEMBLER/INSTALLER:**

Leave these instructions with the consumer.

**CONSUMER/USER:**

Read all instructions and keep in a safe place for future reference.



**INSTASTART™  
Electronic Ignition**

*Propane cylinder not included.*

**IMPORTANT**

**CONSUMER/USER:** This instruction manual contains important information necessary for the proper assembly and safe use of the appliance. Read and follow all warnings and instructions before assembling and using the appliance. Follow all warnings and instructions when using the appliance. Keep this manual for future reference.

If you have questions about assembly, operation, servicing or repair of these grills, please call Coleman at 1-800-835-3278 or TDD: 316-832-8707. In Canada call 1-800-387-6161.

**For Outdoor Use Only**

[www.coleman.com](http://www.coleman.com)

## Contents

Technical Characteristics . . . . .	2
General Safety Information . . . . .	2
Portable L.P. Gas Barbecue Cylinders . . . . .	4
Maintenance . . . . .	5
Grill Assembly . . . . .	5
Leak Check . . . . .	9
Operation . . . . .	10
To Light – Electronic Ignition . . . . .	10
To Adjust Igniter . . . . .	11
To Light – Match Light . . . . .	11
To Turn Off . . . . .	11
To Clean . . . . .	12
To Store . . . . .	13
Cooking Tips . . . . .	13
Trouble Shooting Guide . . . . .	14
Replacement Parts List . . . . .	15
Accessories List . . . . .	15
Warranty . . . . .	16

## Technical Characteristics

Input: 12,500 BTU/H  
Category: Pressure regulated propane  
Fuel: 16.4 oz. disposable propane cylinders  
Regulator: 9972

## General Safety Information

This manual contains important information about the assembly, operation and maintenance of this product and system. General safety information is presented in these first few pages and is also located throughout the manual. Particular attention should be paid to information accompanied by the safety alert symbols: “**▲DANGER**”, “**▲WARNING**”, “**▲CAUTION**”.

Keep this manual for future reference and to educate new users of this product. This manual should be read in conjunction with the labeling on the product.

Safety precautions are essential when any mechanical or propane fueled equipment is involved. These precautions are necessary when using, storing, and servicing. Using this equipment with the respect and caution demanded will reduce the possibilities of personal injury or property damage.

The following symbols shown below are used extensively throughout this manual. Always heed these precautions, as they are essential when using any mechanical or fueled equipment.

## **▲ DANGER**

DANGER indicates an imminently hazardous situation which, if not avoided, will result in death or serious injury.

## **▲ WARNING**

WARNING indicates a potentially hazardous situation which, if not avoided, could result in death or serious injury.

## **▲ CAUTION**

CAUTION indicates a potentially hazardous situation which, if not avoided, may result in minor or moderate personal injury, or property damage.

## **▲ DANGER**

**If you smell gas:**

- 1. Shut off gas to the appliance.**
- 2. Extinguish any open flame.**
- 3. Open lid.**
- 4. If odor continues, keep away from the appliance and immediately call your gas supplier or your fire department.**

**Failure to follow these instructions could result in fire or explosion which could cause property damage, personal injury or death.**

## **▲ DANGER**

- 1. Never operate this appliance unattended.**
- 2. Never operate this appliance within 10 feet (3.05 m) of any other gas cylinder.**
- 3. Never operate this appliance within 25 feet (7.5 m) of any flammable liquid.**
- 4. Heated liquids remain at scalding temperatures long after the cooking process. Never touch cooking appliance until liquids have cooled to 115°F (45°C) or less.**
- 5. If a fire should occur, keep away from the appliance and immediately call your fire department. Do not attempt to extinguish an oil or grease fire with water.**

**Failure to follow these instructions could result in fire, explosion or burn hazard, which could cause property damage, personal injury or death.**

Only persons who can understand and follow the instructions should use or service this outdoor grill.

If you need assistance or outdoor grill information such as an instruction manual or labels, contact The Coleman Company, Inc.

## **DANGER**



### **CARBON MONOXIDE HAZARD**

- **This appliance can produce carbon monoxide which has no odor.**
- **Using it in an enclosed space can kill you.**
- **Never use this appliance in an enclosed space such as a boat cabin, boat galley, camper, tent, car or home.**

## **CAUTION**

- The use of alcohol, prescription or non-prescription drugs may impair your ability to properly assemble or safely operate the appliance.
- When cooking with oil or grease, always have a Type BC or ABC fire extinguisher readily available. In the event of an oil or grease fire, do not attempt to extinguish with water. Immediately call the fire department. A Type BC or ABC fire extinguisher may, in some circumstances, contain the fire.
- When cooking, the appliance must be on a level, stable surface in an area clear of combustible material. An asphalt surface (blacktop) may not be acceptable for this purpose.
- Do not leave the appliance unattended. Keep children and pets away from the appliance at all times.
- Do not move the appliance when in use.
- This appliance is not intended for and should never be used as a heater.

## **DANGER**



### • **EXPLOSION - FIRE HAZARD**

- Never store propane near high heat, open flames, pilot lights, direct sunlight, other ignition sources or where temperatures exceed 120 degrees F (49°C).
- Propane gas is heavier than air and leaking propane will sink to the lowest level possible. It can ignite by ignition sources including matches, lighters, sparks or open flames of any kind many feet away from the original leak. If you smell gas, leave the area immediately.
- Never install or remove propane tank while outdoor grill is lighted, near flame, pilot lights, other ignition sources or while outdoor grill is hot to touch.
- During operation, this product can be a source of ignition. Never use the grill in spaces that contain or may contain volatile or airborne combustibles, or products such as gasoline, solvents, paint thinner, dust particles or unknown chemicals. Minimum distance from sides and back of unit to walls or railings is 12 inches (30.5 cm). Do not use under overhead unprotected combustible construction.
- Provide adequate clearances around air openings into the combustion chamber.
- DO NOT use gas grill indoors or in garages, breezeways, sheds or enclosed areas such as a boat cabin or boat galley.
- Do not obstruct the flow of combustion and ventilation air.

## **WARNING**

We cannot foresee every use which may be made of our products. **Check with your local fire safety authority if you have questions about use.**

Other standards govern the use of fuel gases and heat producing products for specific uses. Your local authorities can advise you about these.

- Never refill disposable cylinders.
- Use the preset regulator that came with the grill. Do not attempt to adjust.
- The installation and use must conform with local codes or, in absence of local codes, with the *National Fuel Gas Code, ANSI Z223.1/NFPA 54, Storage and Handling of Liquefied Petroleum Gases, ANSI/NFPA 58 or CSA B149.1, Natural Gas and Propane Installation Code.*
- This appliance is not intended to be installed in or on recreational vehicles.
- This appliance is not intended to be installed in or on boats **unless** mounted by a Coleman® rail or rod mount kit (sold separately).
- This appliance is not intended for commercial use.

## DANGER



### • CARBON MONOXIDE HAZARD

- This grill is a combustion appliance. All combustion appliances produce carbon monoxide (CO) during the combustion process. This product is designed to produce extremely minute, non-hazardous amounts of CO if used and maintained in accordance with all warnings and instructions. Do not block air flow into or out of the grill.
- Carbon Monoxide (CO) poisoning produces flu-like symptoms, watery eyes, headaches, dizziness, fatigue and possibly death. You can't see it and you can't smell it. It's an invisible killer. If these symptoms are present during operation of this product **get fresh air immediately!**
- **For outdoor use only. If stored indoors, detach cylinder outdoors.**
- **Never use inside boat, house, camper, tent, vehicle or other unventilated or enclosed areas. This grill consumes air (oxygen). Do not use in unventilated or enclosed areas to avoid endangering your life.**

## WARNING

- This product is fueled by propane gas. Propane gas is invisible, odorless, and flammable. An odorant is normally added to help detect leaks and can be described as a "rotten egg" smell. The odorant can fade over time so leaking gas is not always detectable by smell alone.
- Use only propane gas set up for vapor withdrawal.
- Propane gas should be stored or used in compliance with local ordinances and codes or with ANSI/NFPA 58 and with the American Boat and Yacht Council (ABYC) Standards A-1 (9), Marine Liquefied Petroleum gas (LPG) Systems.
- Turn off propane and disconnect cylinder when not in use.
- Cylinders must be stored out of reach of children.

### CALIFORNIA PROPOSITION 65:

**WARNING:** This fuel, and byproducts of combustion of this fuel, contain chemicals known to the state of California to cause cancer, birth defects, or other reproductive harm.

## WARNING



### • BURN HAZARD

- Never leave grill unattended when hot or in use.
- Keep out of reach of children.

## CAUTION

### • SERVICE SAFETY

- Keep all connections and fittings clean. Inspect propane cylinder and grill propane connections for damage before attaching.
- During set up, check all connections and fittings for leaks using soapy water. Never use a flame. Bubbles indicate a leak. Check that the connection is not cross-threaded and that it is tight. Perform another leak check. If there is still a leak, remove the cylinder and contact Coleman for service or repairs.
- Use as a cooking appliance only. Never alter in any way or use with any device or part not expressly approved by Coleman.
- Clean grill frequently to avoid grease accumulation and possible grease fires.

## WARNING

- This grill is for use while the boat is anchored or moored. Never operate grill while the boat is underway.

### ***Portable L.P. Gas Barbecue Cylinders***

Liquefied Petroleum Gas (abbreviated L.P. gas or propane) is highly flammable. It becomes liquid when stored under high pressure inside a cylinder and vaporizes when released. L.P. gas is heavier than air and tends to collect in low areas. It is important that there are no leaking connections on your gas grill that could cause a fire or explosion (see the section titled "LEAK CHECK").

## WARNING

Your new grill is only to be operated with 16.4 oz. disposable propane gas cylinders. **DO NOT** attempt to attach any other type of L.P. gas connections or natural gas connections.

## Maintenance

### **WARNING**

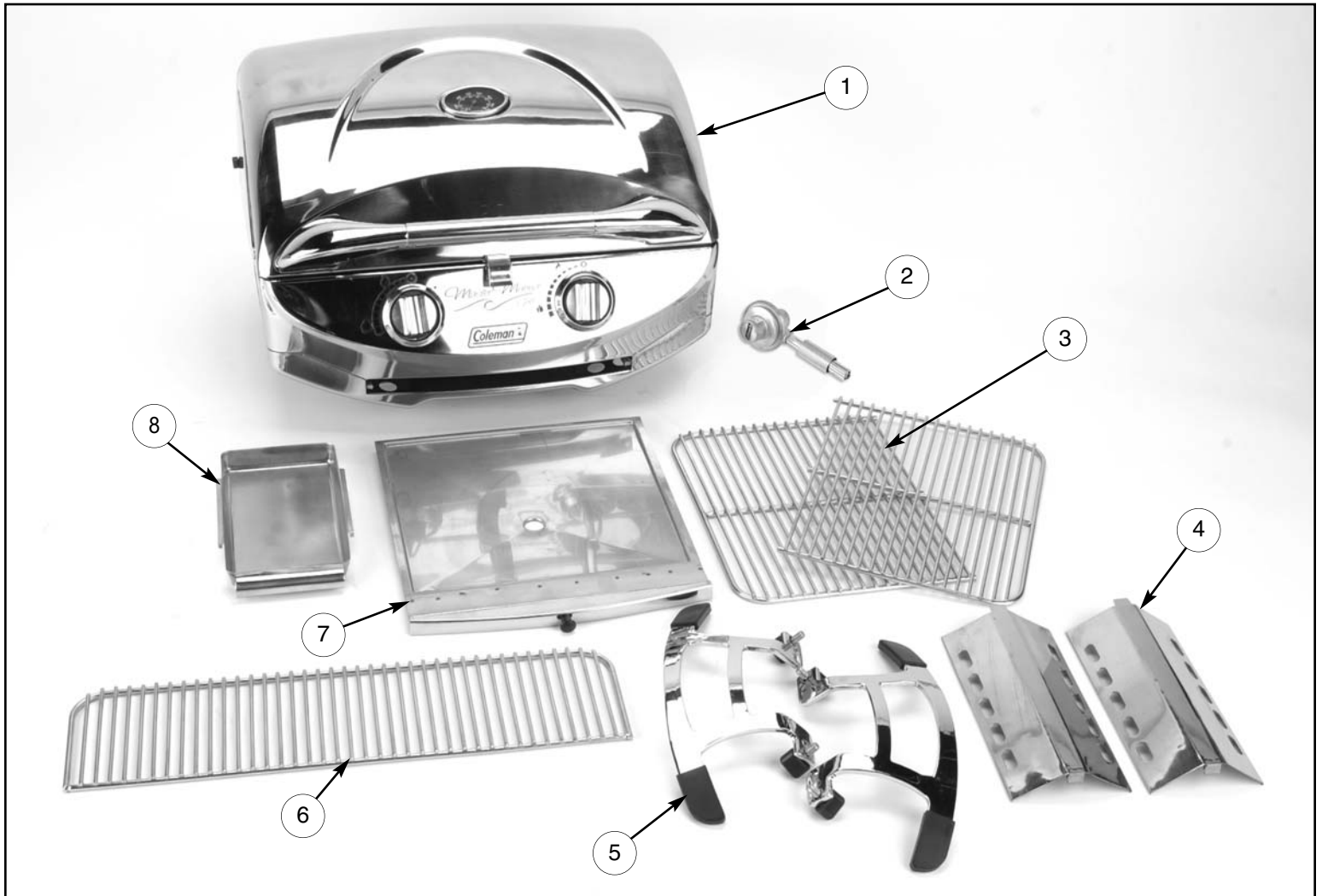
- Do not overheat grill. Stainless steel loses anti-corrosive characteristics when subjected to extreme heat.

- **About stainless steel** - Stainless steel exposed to prolonged periods of high heat will change color and texture. Coleman grills require little preheating. Texture and color change is normal on interior components and will not affect the operation or performance of the product.
- **Cleaning** - Clean the exterior surface after every use. Use soapy water with a soft cloth or sponge. Rinse thoroughly with fresh water and dry. We recommend covering the grill between uses. Optional covers are available from Coleman retailers or direct from Coleman.  
**CAUTION: Abrasive pads or cleaners will damage the finish.**

- **Interior components** - Remove heavy residue from grill and empty grease tray between each use. We recommend cleaning all accessible surfaces, and all removable components, at least once a year, depending on amount of use, and always prior to long term storage.
- **Grill grates** - Clean with brass wire brush while grill is warm. Wash with soapy water and dry prior to storage.
- **Ceramic electrode** - Located just beside the burner, it should be kept clean of grease and debris. Be careful not to damage the ceramic insulator or bend the wire. See page 11 for proper electrode spark adjustment.
- **Control valve** - All valves are set and tested at our factory. Do not attempt to adjust or disassemble the valve in any way. Call Coleman if you suspect it's not adjusted properly. Clean valve with a clean cloth and remove any debris obstructing the gas outlet orifice.

## Grill Assembly

Remove components from carton and check the the following list to make sure all parts are accounted for before proceeding.



- |                     |                      |                |
|---------------------|----------------------|----------------|
| 1. Grill            | 4. Heat Tents (2)    | 7. Crumb Tray  |
| 2. Regulator        | 5. Tabletop Legs (2) | 8. Grease Tray |
| 3. Grill Grates (2) | 6. Warming Rack      |                |

See page 15 for  
Replacement Parts List  
and ordering instructions.

## Grill Assembly

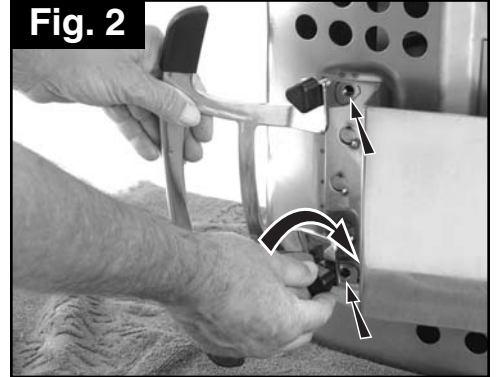
**IMPORTANT:** Remove all protective plastic film from stainless steel parts and any packing materials from grill prior to assembly/use. This film or packing materials are installed at the factory to prevent damage that could occur during shipment and handling.

1. With lid latched, lift up on handle and set grill so it is resting on the back of the case. (Fig. 1)  
**Note:** Use a drop cloth to help protect the stainless steel finish.
2. Align bolts on leg with holes on bottom of grill and hand tighten knobs clockwise to secure. (Fig. 2)
3. Install other leg as shown. (Fig. 3)
4. Set grill upright on legs, open latch and lift lid up. (Fig. 4)
5. Install crumb tray in center front of grill. (Fig. 5)

**Fig. 1**



**Fig. 2**



**Fig. 3**



**Fig. 4**



**Fig. 5**

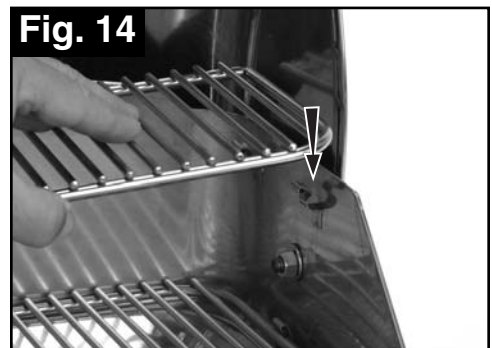
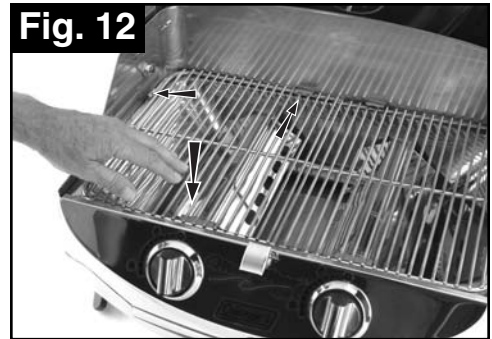


## Grill Assembly continued

6. Install grease tray onto tracks at bottom front of grill. (Fig. 6)
7. Insert tab on heat tent into slot on bracket at back of grill. (Fig. 7)
8. Push down on tab at front of heat tent to lock into slot on grill bracket. (Fig. 8)
9. Install the remaining heat tent as shown. (Fig. 9)
10. Slip right side grill grate under tab at back of grill. (Fig. 10)



11. Push down on grate to lock into tabs on right side of grill. (Fig. 11)
12. Insert remaining grill grate under tab at back of grill, then push down on grate to lock into tabs on left side of grill. (Fig. 12)
13. Place warming rack on tabs at left side of grill and push down to lock. (Fig. 13)
14. Press down on other side to lock warming rack into tabs on right side of grill. (Fig. 14)
15. Turn both control knobs on front of grill to OFF position. (Fig. 15)





## Grill Assembly continued

16. Remove plastic cap from top of propane cylinder and turn propane cylinder clockwise into regulator hand tight. (Fig. 16)
17. Insert the regulator pipe firmly. The regulator uses a push-on fitting to attach to the grill. It is necessary to hold the grill to make sure the fitting is seated, Align the regulator to the fuel tube on the side of the grill and push on until you hear the retainer “click” into place (Fig. 17). Gently pull on the regulator to ensure that the connection is secure.
18. Never operate grill with propane cylinder in an inverted position. (Fig. 18)

**Fig. 16**



**Fig. 17**



**Fig. 18**



## Leak Check

### **⚠ WARNING**

- Perform leak test outdoors.
- Extinguish all open flames.
- NEVER leak test when smoking.
- Do not use the outdoor grill until connection has been leak tested and does not leak.

Note: Use Coleman 16.4 oz. disposable propane cylinders. The LP-gas supply cylinder to be used must be constructed and marked in accordance with the specifications for LP-gas cylinders of the U.S. Department of Transportation (DOT) or the National Standard of Canada, *CAN/CSA B339, Cylinders, Spheres and Tubes for the Transportation of Dangerous Goods.*

## Operation

### **! DANGER**



#### • CARBON MONOXIDE HAZARD

- For outdoor use only.
- Never use inside house, camper, tent, vehicle or other unventilated or enclosed areas. This grill consumes air (oxygen). Do not use in unventilated or enclosed areas to avoid endangering your life.

### **! DANGER**



#### • EXPLOSION - FIRE HAZARD

- Propane is heavier than air and can accumulate in low places. If you smell gas, leave the area immediately.
- Always attach or detach propane source outdoors; never while grill is lighted, near flame, pilot lights, other ignition sources or while grill is hot to touch.
- This grill is very hot during use and can ignite flammables too close to the burners. Minimum distance from sides and back of unit to walls or railings is 12 inches (30.5 cm). Do not use under overhead unprotected combustible construction. Keep gasoline and other flammable liquids and vapors well away from grill.

### **! CAUTION**

#### • DO NOT OVERHEAT GRILL

- Stainless steel loses anti-corrosive characteristics when subjected to extreme heat causing damage and discoloration.

### **! CAUTION**

- Never leave grill unattended when hot or in use.
- Keep out of reach of children.

### **! CAUTION**

- A common mistake is to use too high a heat setting. Grill will continue to become hotter as you cook.
- Excessive flare-ups may occur if the grill is too hot. If grill becomes too hot, spray fresh water on flare-ups until cool.
- Use medium heat and be patient.

- Do not attempt to operate this grill until you have read and understood all General Safety Information in this manual and all assembly is complete and leak checks have been performed.
- Never ignite grill with lid closed.

## To Light

### **! WARNING**



#### • BURN HAZARD

- This appliance will be hot during and after use. Use insulated oven mitts or gloves for protection from hot surfaces or splatter from cooking liquids.
- Never leave grill unattended when hot or in use.
- Keep out of reach of children.

## INSTASTART™ Electronic Ignition Grills

1. Set on sturdy, flat surface. **For outdoor use only.**
2. You may operate the grill with only the left, only the right, or both burners as needed. The igniter must be operated to light each burner.
3. Push control knob in and rotate counterclockwise until you hear the igniter's "click". (Fig. 19)

Note: If igniter fails to light grill, repeat step.

4. If igniter still fails to light grill, use match to light burner. If the grill is wet, the igniter may not spark. Check for proper gap between igniter wire and burner tube. (See Fig. 21 on page 11)
5. Adjust flame with control valve. (Fig. 20)

Fig. 19

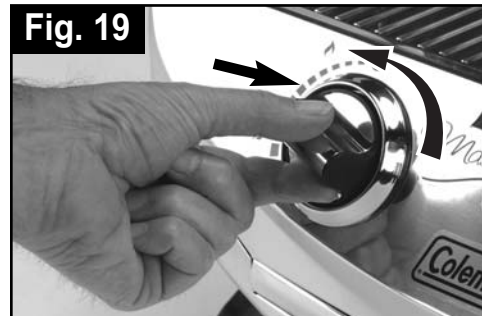


Fig. 20



## To Adjust Igniter

**NOTE:** A gap of 1/8" should be maintained between the end of the wire on the electrode and the burner tube for proper ignition spark. (Fig. 21)

1. Set on sturdy, flat surface.
2. Grasp end of wire with a needle nose pliers and carefully bend to adjust to proper spacing from burner tube (Fig. 21). **Be careful to not break or crack the ceramic insulator.**



## To Light

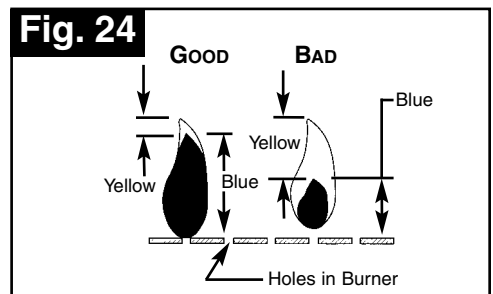
### To Match Light

#### **CAUTION**

Use a long wooden match or a match extension

1. Set on sturdy, flat surface. **For outdoor use only.**
2. You may operate the grill with only the left, only the right, or both burners as needed.
3. Hold a lighted match near the burner, then push the control knob in and rotate counter-clockwise to the fully open position. (Fig. 22)
4. Repeat Step 3 to light the second burner.
5. Adjust flame with control valve. (Fig. 23)
6. A good flame should be blue with minimal yellow tip. Some yellow tips on flames are acceptable as long as no carbon or soot deposits appear. (Fig. 24)

**NOTE:** If the burner flame is accidentally extinguished, turn off the control valve and wait 5 minutes before relighting the appliance.



## To Turn Off

1. Turn control valves to OFF. (Fig. 25)



## To Clean

1. Make sure grill is cool.
2. Always detach the propane cylinder outdoors, away from flame (including pilot lights) and other ignition sources.
3. The fitting on the regulator has a sliding collar that secures the regulator to the grill fuel line. Slide the collar away from the stove and then pull the regulator off the grill fuel line. (Fig. 26)
4. Detach the propane cylinder from the regulator and replace the plastic protective cap onto the cylinder threads. (Fig. 27)
5. Clean the grates, warming rack, grease tray, and crumb tray with soft cloth and mild dish detergent (Fig. 28). Abrasive pads or cleansers will damage the finish.

**Fig. 26**



**Fig. 27**



**Fig. 28**



## To Store

### **⚠ DANGER**



#### • EXPLOSION - FIRE HAZARD

- Never store propane near high heat, open flames, pilot lights, direct sunlight, other ignition sources or where temperatures exceed 120 degrees F (49°C).
- The cylinder must be disconnected when the grill is in storage.
- Do not store a spare LP-gas cylinder under or near this appliance. Failure to follow the above instructions exactly may result in fire causing death or serious injury.

1. For storage or transport, the regulator may be placed inside the grill, on top of the cooking grates. Latch the lid securely. (Fig. 29)
2. Carry grill with handle as shown. (Fig. 30)
3. Always store grill in a clean, dry location.

Fig. 29



Fig. 30



## Cooking Tips

### **⚠ CAUTION**

DO NOT operate the grill on a boat when it is in operation or moving. Always wait until securely anchored or tied to dock.

### **⚠ CAUTION**

DO NOT operate appliance with a pot or pan on grill surface. Damage will occur and void the warranty.

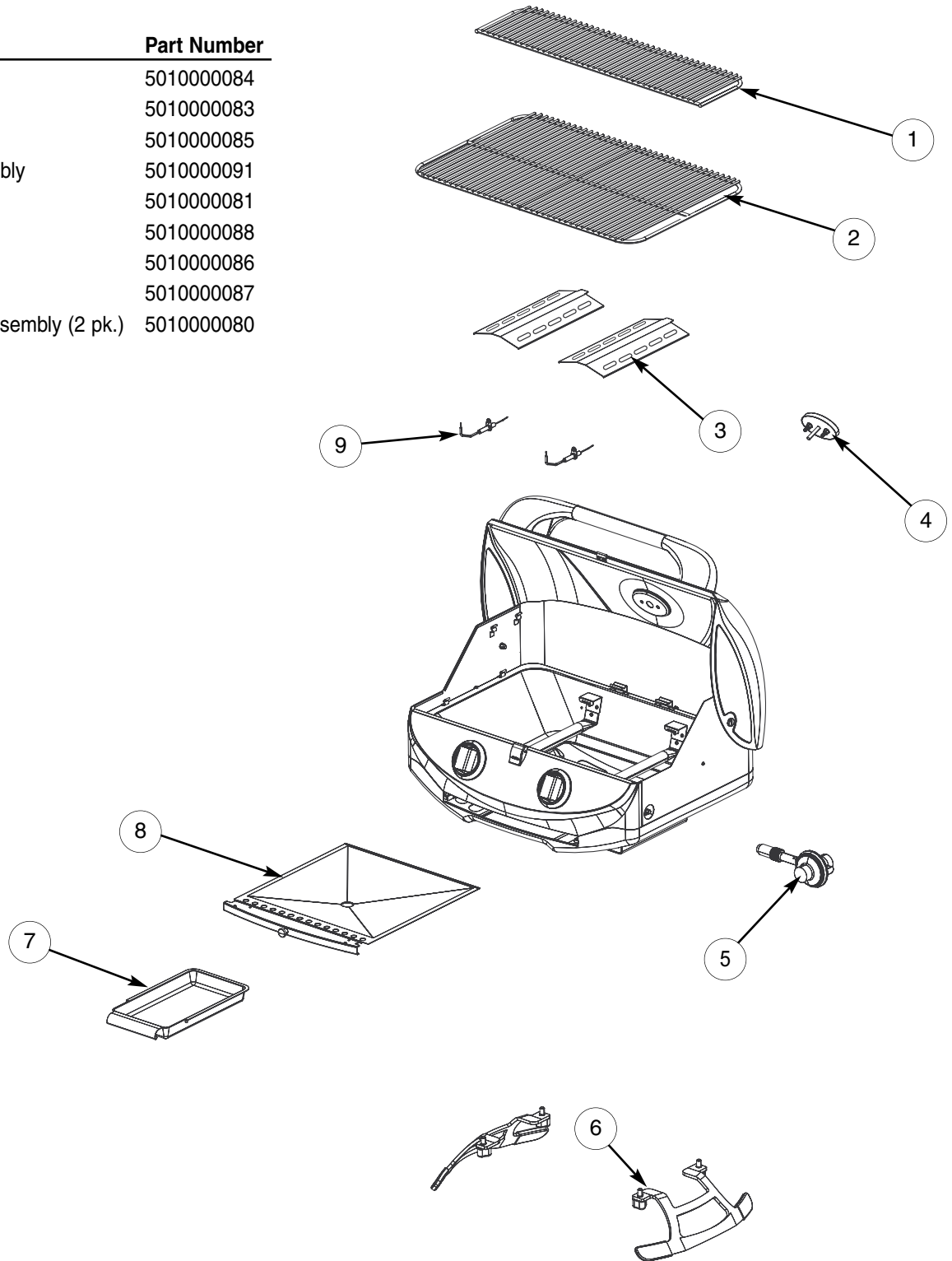
1. To reduce sticking and improve clean-up, spray cooking surface with vegetable oil prior to lighting grill.
2. To reduce flare-ups, use lean cuts of meat, trim excessive fat, and avoid oil base marinades.
3. If flare-ups occur, lower grill temperature, spray area with fresh water, and move food away from flare-up.

## Trouble Shooting Guide

Problem	Possible Cause	Possible Solution
<b>Burner will not light with igniter</b>	Igniter electrode covered with grease or residue Igniter/electrode too far from burner Igniter/electrode wire loose or disconnected Wire is shorted causing spark from wire before electrode No spark being generated	Clean igniter electrode Adjust electrode until proper spark appears (see page 11) Call Coleman for service Call Coleman for service Call Coleman for service
<b>Burner will not light even with a match</b>	No gas flow Obstructed gas flow/debris spider webs in burner tube	Check fuel level or replace fuel cylinder Call Coleman for service
<b>Flare-up</b>	Excessive cooking temperature Grease and/or residue build-up Excessive fat in meats Excessive oils in marinades	Reduce flame level Leave lid open Spray with water to cool Clean components Trim fat from cut of meat before grilling Use non-oil based marinades
<b>Yellow sooty flame</b>	Obstructed gas flow/debris or	Call Coleman for service
<b>Flame Blow-out</b>	Flame too low Fuel cylinder is low Obstructed gas flow	Increase flame Check fuel level or replace cylinder Call Coleman for service

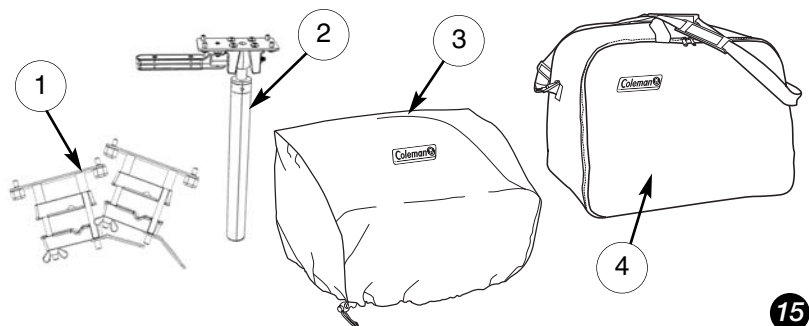
## Replacement Parts List – 9972 Series

No.	Description	Part Number
1	Warming Grate	5010000084
2	Grill Grate	5010000083
3	Heat Tent (1 pk.)	5010000085
4	Thermometer Assembly	5010000091
5	Regulator	5010000081
6	Leg Kit (1 pk.)	5010000088
7	Grease Tray	5010000086
8	Crumb Tray	5010000087
9	Igniter/Piezo/Wire Assembly (2 pk.)	5010000080



## Accessory items (sold separately) – 9972 Series

No.	Description	Part Number
1	Dual Rail Mounting Kit	R9972-524
2	Adjustable Rod Holder Mounting Kit	R9972-543
3	Grill Cover	2000000643
4	Padded Grill Case	2000000642



## Limited One Year Warranty

The Coleman Company, Inc. ("Coleman") warrants that for a period of one year from the date of original retail purchase, this product will be free from defects in material and workmanship. Coleman, at its option, will repair or replace this product or any component of the product found to be defective during the warranty period. Replacement will be made with a new or remanufactured product or component. If the product is no longer available, replacement may be made with a similar product of equal or greater value. This is your exclusive warranty.

This warranty is valid for the original retail purchaser from the date of initial retail purchase and is not transferable. Keep the original sales receipt. Proof of purchase is required to obtain warranty performance. Coleman dealers, service centers, or retail stores selling Coleman® products do not have the right to alter, modify or in any way change the terms and conditions of this warranty.

### What This Warranty Does Not Cover

This warranty does not cover normal wear of parts, parts that are not genuine Coleman® parts, or damage resulting from any of the following: negligent use or misuse of the product; use on improper voltage or current; commercial use of the product; use contrary to the operating instructions; disassembly, repair or alteration by anyone other than Coleman or an authorized service center. Further, the warranty does not cover Acts of God, such as fire, flood, hurricanes and tornadoes. Warranty void if damage to product results from the use of a part other than a genuine Coleman® part.

**COLEMAN SHALL NOT BE LIABLE FOR DEFECTS THAT ARE CAUSED BY THE USE OF UNAUTHORIZED PARTS OR SERVICE. COLEMAN SHALL NOT BE LIABLE FOR ANY INCIDENTAL OR CONSEQUENTIAL DAMAGES CAUSED BY THE BREACH OF ANY EXPRESS OR IMPLIED WARRANTY OR CONDITIONS. EXCEPT TO THE EXTENT PROHIBITED BY APPLICABLE LAW, ANY IMPLIED WARRANTY OF MERCHANTABILITY OR FITNESS FOR A PARTICULAR PURPOSE IS LIMITED IN DURATION TO THE DURATION OF THE ABOVE WARRANTY OR CONDITIONS. SOME STATES, PROVINCES, OR JURISDICTIONS DO NOT ALLOW THE EXCLUSION OR LIMITATION OF INCIDENTAL OR CONSEQUENTIAL DAMAGES OR LIMITATIONS ON HOW LONG AN IMPLIED WARRANTY LASTS, SO THE ABOVE LIMITATIONS OR EXCLUSION MAY NOT APPLY TO YOU. THIS WARRANTY GIVES YOU SPECIFIC LEGAL RIGHTS, AND YOU MAY ALSO HAVE OTHER RIGHTS THAT VARY FROM STATE TO STATE OR PROVINCE TO PROVINCE.**

### How to Obtain Warranty Service

Take the product to an authorized Coleman service center. You can find the nearest authorized Coleman service center by visiting [www.coleman.com](http://www.coleman.com) or calling 1-800-835-3278 or TDD 316-832-8707 in the United States or 1 800 387-6161 in Canada. If a service center is not conveniently located, attach to the product a tag that includes your name, address, daytime telephone number and description of the problem. Include a copy of the original sales receipt. Carefully package the product and send either by **courier** or **insured mail** with shipping and **insurance** prepaid to:

#### For products purchased in the United States:

The Coleman Company, Inc.  
3600 North Hydraulic  
Wichita, KS 67219


The costs of transporting the product to Coleman or an authorized service center for warranty service is the responsibility of the purchaser. Do not mail products with fuel in tanks, or with disposable gas cylinders.

**DO NOT RETURN THIS PRODUCT TO THE PLACE OF PURCHASE.**

If you have any questions regarding this warranty please call 1-800-835-3278 or TDD 316-832-8707 in the United States or 1 800 387-6161 in Canada.



The Coleman Company, Inc. • 3600 North Hydraulic • Wichita, KS 67219 U.S.A.  
1-800-356-3612 • TDD: 316-832-8707

©2007 The Coleman Company, Inc. All rights reserved. Coleman® and  are registered trademarks and InstaStart™ and Master Mariner™ are trademarks of The Coleman Company, Inc.