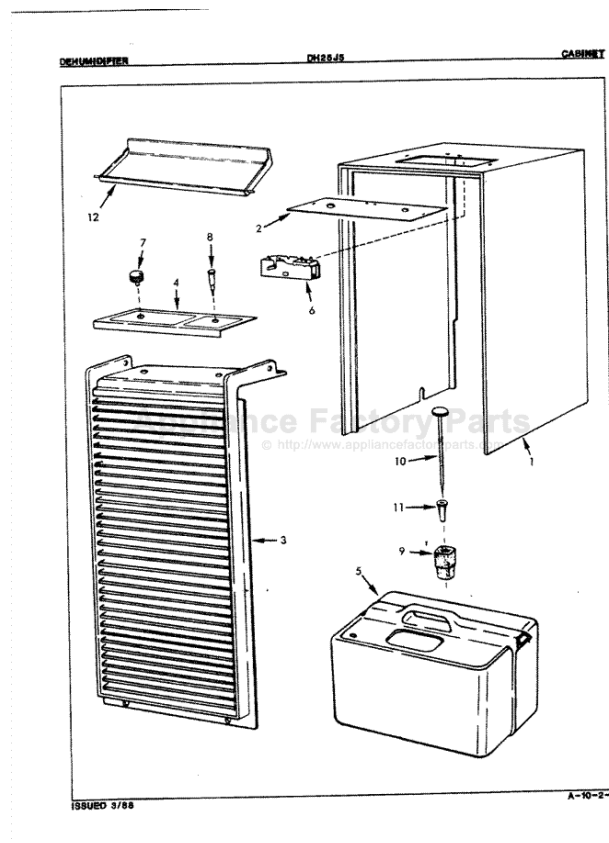


This Owner's Manual is provided and hosted by [Appliance Factory Parts](http://www.appliancefactoryparts.com).



CROSLEY DH25J5 Owner's Manual

[Shop genuine replacement parts for CROSLEY DH25J5](#)



[Find Your CROSLEY Dehumidifier Parts - Select From 29 Models](#)

----- Manual continues below -----

OWNER'S GUIDE

READ AND SAVE THESE INSTRUCTIONS

Record Model No. and Serial No. of this dehumidifier in space provided below. These numbers are printed on the nameplate located behind the bucket.

Model No. _____

Serial No. _____

IMPORTANT: Keep a copy of your bill of sale. The date on the bill establishes the warranty period should service be required. If service is performed, it is in your best interest to obtain and keep all receipts.

Register Your Product

The self-addressed PRODUCT REGISTRATION CARD should be filled in completely, signed, and returned to the Frigidaire Company.

Contents

- 2 **Warranty**
- 3 **Important Safety Instructions**
- 3 **Location**
- 3 **How It Works**
- 4 **Operating Steps**
- 4-5 **Dehumidifier Features**
- 5-6 **Removing Collected Water**
- 6 **Care and Cleaning**
- 7 **Avoid Service Checklist**

Operate dehumidifier only as instructed in this Owner's Guide. These instructions are not meant to cover every possible condition and situation that may occur. Common sense and caution **must be used** when installing, operating, and maintaining any appliance.

DEHUMIDIFIER

DEHUMIDIFIER WARRANTY

Your product is protected by this warranty

	WARRANTY PERIOD	WE WILL, THROUGH ITS AUTHORIZED SERVICERS:	THE CONSUMER WILL BE RESPONSIBLE FOR:
FULL ONE-YEAR CARRY-IN WARRANTY	One year from original purchase date.	Pay all costs for repairing or replacing parts of this appliance which prove to be defective in materials or workmanship.	For service without charge during this period, you must carry in your product to the nearest Frigidaire Company Consumer Services or an authorized servicer. Costs of service calls that are listed under NORMAL RESPONSIBILITIES OF THE CONSUMER.*
LIMITED 2ND - 5TH YEAR WARRANTY (Sealed System)	Second through fifth years from original purchase date.	Repair or replace any parts in the Sealed Refrigeration System (compressor, condenser, evaporator and tubing) which proves to be defective in materials or workmanship.	Diagnostic costs and any removal, transportation and reinstallation costs which are required because of service. Costs for labor, parts and transportation other than with respect to the Sealed Refrigeration System.
LIMITED WARRANTY (Applicable to the State of Alaska)	Time periods listed above.	All of the provisions of the full and limited warranties above and the exclusions listed below apply.	Costs of the technician's travel to the home and any costs for pick up and delivery of the appliance required because of service.

Your appliance is warranted by Frigidaire Company, a division of White Consolidated Industries, Inc. We authorize no person to change or add to any of our obligations under this warranty. Our obligations for service and parts under this warranty must be performed by Frigidaire Company Consumer Services or an authorized Frigidaire Company servicer.

*NORMAL RESPONSIBILITIES OF THE CONSUMER

This warranty applies only to products in ordinary household use, and the consumer is responsible for the items listed below.

1. Proper use of the appliance in accordance with instructions provided with the product.
2. Proper installation by an authorized servicer in accordance with instructions provided with the appliance and in accordance with all local plumbing, electrical and/or gas codes.
3. Proper connection to a grounded power supply of sufficient voltage, replacement of blown fuses, repair of loose connections or defects in house wiring.
4. Expenses for making the appliance accessible for servicing, such as removal of trim, cupboards, shelves, etc., which are not a part of the appliance when it was shipped from the factory.
5. Damages to finish after installation.
6. Replacement of light bulbs and/or fluorescent tubes (on models with these features).

EXCLUSIONS

This warranty does not cover the following:

1. CONSEQUENTIAL OR INCIDENTAL DAMAGES SUCH AS PROPERTY DAMAGE AND INCIDENTAL EXPENSES RESULTING FROM ANY BREACH OF THIS WRITTEN OR ANY IMPLIED WARRANTY.
Note: Some states do not allow the exclusion or limitation of incidental or consequential damages, so this limitation or exclusion may not apply to you.
2. Service calls which do not involve malfunction or defects in workmanship or material, or for appliances not in ordinary household use. The consumer shall pay for such service calls.
3. Damages caused by services performed by persons other than authorized Frigidaire Company servicers; use of parts other than Frigidaire Company Genuine Renewal Parts; obtained from persons other than such servicers; or external causes such as abuse, misuse, inadequate power supply or acts of God.
4. Products with original serial numbers that have been removed or altered and cannot be readily determined.

IF YOU NEED SERVICE

Keep your bill of sale, delivery slip, or some other appropriate payment record. The date on the bill establishes the warranty period should service be required. If service is performed, it is in your best interest to obtain and keep all receipts. This written warranty gives you specific legal rights. You may also have other rights that vary from state to state. Service under this warranty must be obtained by following these steps, in order:

1. Contact Frigidaire Company Consumer Services or an authorized Frigidaire servicer.
2. If there is a question as to where to obtain service, contact the Frigidaire Consumer Relations Department at:

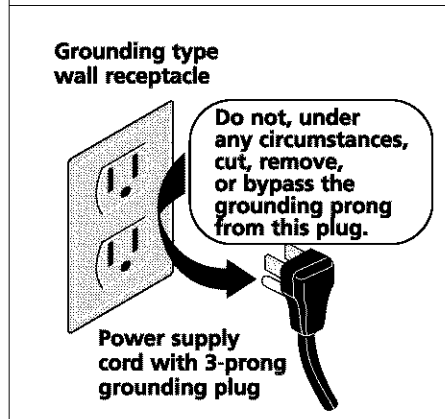
Frigidaire Company
P.O. Box 212378
Augusta, GA 30917
(800) 444-4944



Product features or specifications as described or illustrated are subject to change without notice. All warranties are made by White Consolidated Industries, Inc. This warranty applies only in the 50 states of the U.S.A. and Puerto Rico.

Important Safety Instructions

⚠ WARNING Avoid fire hazard or electric shock. Do not use an extension cord or an adaptor plug. Do not remove grounding prong from power cord.



Read all instructions before using this dehumidifier. To reduce the risk of fire, electric shock, or injury to persons when using your dehumidifier, follow basic precautions, including the following:

⚠ WARNING For Your Safety

Do not store or use gasoline or other flammable vapors and liquids in the vicinity of this or any other appliance. Read product labels for flammability and other warnings.

⚠ WARNING Child Safety Precautions

- Destroy the carton, plastic bags, and any packing materials immediately after the dehumidifier is unpacked. Children should never use these items for play.
- Do not leave children unattended in an area where the appliance is operating.
- Do not allow them to sit or stand on the appliance.

⚠ WARNING Electrical Information

- For your safety and protection, this dehumidifier is equipped with a three-prong grounding plug on the power cord. **Do not, under any circumstances, cut or remove the round ground prong from the plug.**
- Your dehumidifier must be plugged directly into a properly grounded and polarized three-prong receptacle. If the wall receptacle you intend to use will not accept a three-prong plug, or if you are not sure the outlet is adequately grounded or protected by a time delay fuse or circuit breaker, have a qualified electrician install the proper outlet according to the National Electrical Code and applicable local codes and ordinances. **Do not use an extension cord or an adapter plug.**
- Never unplug the dehumidifier by pulling on the power cord. Always grip the plug firmly and pull straight out from the receptacle.
- Do not pinch, bend, or knot the power cord.

Location

Selecting a Location

IMPORTANT:

1. **Dehumidifier must be operated in an enclosed area to be most effective. Close all doors, windows, and other outside openings to the room. The effectiveness of the dehumidifier depends on the rate at which new moisture-laden air enters room.**
2. **Place dehumidifier in a location that does not restrict airflow through the front of the unit or out of the louvers on the left side of cabinet.**
3. **A dehumidifier operating in a basement will have little or no effect in drying an adjacent enclosed storage area, such as a closet, unless there is adequate circulation of air in and out of the area. It may be necessary to install a second dehumidifier in the enclosed area for satisfactory drying.**

How It Works

When the unit is started, the fan begins to pull moisture-laden air across the dehumidifying coils. The coils condense or draw moisture from the air, and air flows through the side louvers into the room as dry, warm air. Moisture removed from air is collected in a bucket on the front of the dehumidifier.

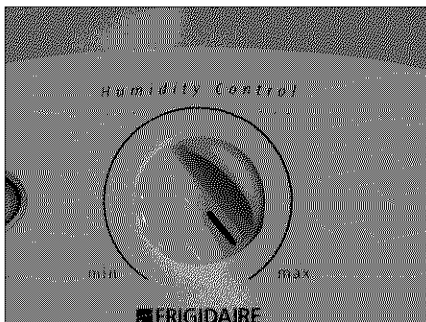
Operating Steps

The bucket has a hose/drain connection. The dehumidifier should be kept in operation as long as excess moisture is present in the room air.

To begin operating the dehumidifier, follow these steps:

1. Plug the power cord into a properly grounded 110/120 volt AC outlet.
Note: Before operating this unit, see the "Removing Collected Water" section for proper placement of the bucket. Model will not operate if the bucket is not properly positioned in the unit.
2. When first using the dehumidifier, turn the Humidistat Control clockwise to the MAX.DRY position. The unit will run continuously at this setting.
3. Press the Fan Speed Button to HI. The HI setting is recommended for faster moisture removal.
4. Allow the dehumidifier to operate at the above settings for three to four days. After this time, adjust the controls as needed. See below.

Dehumidifier Features



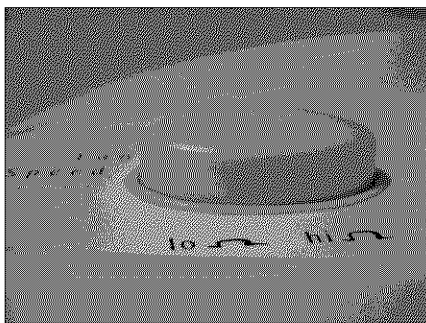
Humidistat Control

The Humidistat Control automatically starts dehumidifier when humidity is excessive. When humidity has been reduced to the comfort level set on the control, the unit turns off.

When first using dehumidifier, turn Humidistat Control clockwise to MAX.DRY. Unit will run continuously at this setting. Operate dehumidifier at the MAX.DRY setting for three to four days. During this time, observe the dampness conditions in the area being dried. When the sweating has stopped and the dampness odors are gone, adjust Humidistat Control to the position between OFF and MAX.DRY that provides a "dryness" condition suitable to your needs/comfort.

Fan Speeds

The Fan Speed adjusts fan speed. When humidity has been reduced to the desired level and quiet operation is preferred, press Fan Speed to LO.



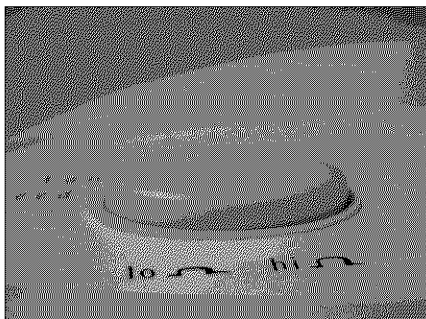
(Hi-Speed)

Moisture Removal

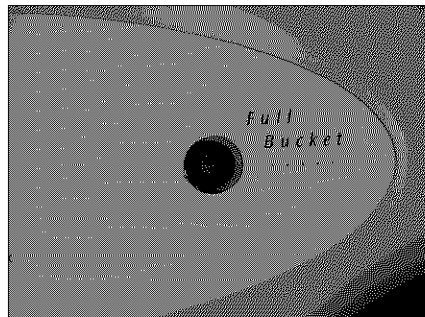
At first, the dehumidifier will remove large amounts of moisture. It will continue to do so until the relative humidity is reduced to a point where moisture damage will not occur. Then, the amount of moisture removed from the air will be a lot less. This indicates the dehumidifier is operating effectively and is maintaining the relative humidity at the desired level. Judge the performance of the dehumidifier by the elimination of dampness and dampness odors, not by the amount of water being deposited in the bucket. When bucket has filled with water, unit will turn off. All models feature an Automatic Shut-Off light that will glow until bucket is emptied and returned to the proper position.

Operating Conditions

All models will operate if the room temperature is greater than 65°F (18°C). Models with a moisture removal capacity greater than 40 pints per 24 hours will operate satisfactorily at a temperature no lower than 50°F (10°C). If conditions less than those stated or the humidity is low the dehumidifier should be turned off. See "Frost Control".



(Low-Speed)



Dehumidifier Features (continued)

Operating Conditions (Continued)

A dehumidifier will not eliminate frost on windows during winter. The dehumidifying coil normally operates above freezing temperatures and cannot prevent moisture from condensing on the inside of a window pane that is below freezing.

TIP: It may be helpful to use a dehumidifier in the kitchen or laundry area where the humidity is high. Reducing humidity in these areas may reduce frost on windows in other parts of the home.

Frost Control

The Frost Control feature prevents frost or ice from remaining on the dehumidifying coil for an extended period of time. When frost formation occurs, this control turns off the compressor. The fan continues to run, causing any frost or ice to melt. Dehumidifier will then resume normal operation.

Frost Control is also designed to prevent excessive on-off cycling. Under certain conditions this may allow frost to remain on coil for some time before the compressor turns off and the frost is cleared.

Removing Collected Water



Figure 1

Bucket and Float Installation

All models are supplied with a bucket, which is conveniently tucked into the front of the unit to accumulate water removed from the air, or use the built-in hose connection to carry water directly to a drain.

When using the bucket the Automatic Shut-Off switch is activated by a float. The Automatic Shut-Off switch stops the unit before the bucket overflows, and turns the unit on again after the bucket is emptied and replaced.

The bucket and float must be installed correctly for proper operation (Figure 1).

Bucket Removal



Figure 2

1. Grasp bucket from both sides at the bottom, gently lift up and slide halfway out until handle is exposed. See Figure 2.
2. Grab handle and slide bucket away from unit. See Figure 3.
3. After emptying the collected water, slide bucket back into place.
4. Be sure bucket is in place.

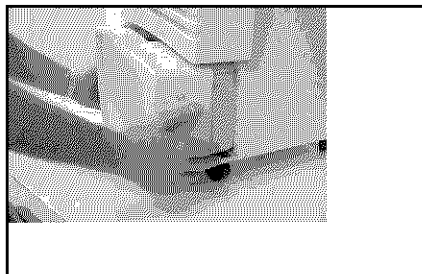


Figure 3

Direct Draining

Direct Draining

If you want the water to flow directly to a drain, you must first remove the hose cap (Figure 2). To remove hose cap, use a standard screwdriver and turn counter-clockwise. Connect any standard garden hose to the bucket connection, or place the dehumidifier over the drain. A standard garden hose has a 3/4" (19 mm) diameter connection with 1 1/4 inch threads per inch.

Note: When using either of the above direct draining methods, you must first drill a 3/8" (10 mm) hole in the center of the bucket connection. (For ease of drilling use locating mark to center drill bit for hole (Figure 3).) This will allow water to flow freely through the connection. To reseal the hose connection to the bucket, use any standard hose end cap. **The hose cap cannot be used to reseal the hole.**

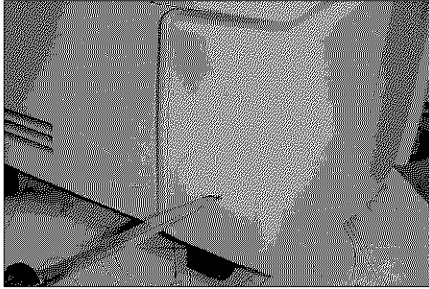


Figure 4

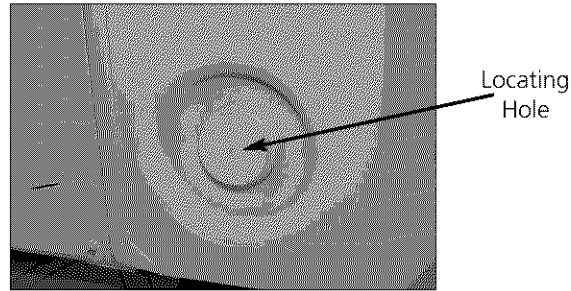


Figure 5

Care and Cleaning

Proper Care

Before cleaning, be sure to turn off and unplug unit.

1. Dust outer cabinet with an oil-free cloth, or wash with warm water.
2. Use a vacuum cleaner and brush attachment to clean grill.

Note: Fan motor has been permanently lubricated at the factory.

Air passing through dehumidifier may carry quantities of dust, lint and fungus spores. Much of this matter will be deposited on the coil and then flushed away by natural drainage.

Avoid Service Checklist

Before calling for service, review this list. It may save you time and expense. This list includes common occurrences that are not the result of defective workmanship or materials in this appliance.

OCCURRENCE

SOLUTION

DEHUMIDIFIER DOES NOT OPERATE.

Plug is disconnected from outlet. Push plug firmly into wall outlet.

House fuse blown or circuit breaker tripped. Replace fuse with time delay type or reset circuit breaker.

The dryness level you selected has been reached. Dehumidifier automatically shuts off when selected amount of moisture has been removed from the air. If you want to remove more moisture, turn the Humidistat Control to MAX.DRY. After the dehumidifier starts, reset the control to the desired setting.

Bucket not installed properly. See "Removing Collected Water."

Water in the bucket has reached its preset level. Dehumidifier automatically turns off when this occurs. Empty bucket and return bucket to position.

Dehumidifier is not turned on. Turn the Humidistat Control to MAX.DRY.

DEHUMIDIFIER RUNS TOO MUCH.

Windows or doors near dehumidifier are open to outdoors. Close all windows or doors to outside.

Area to be dehumidified is too large. Check with your dealer to see if capacity is adequate.

Air movement through dehumidifier is blocked. Grill may be dirty. Use brush attachment of vacuum cleaner to clean grill. See "Care and Cleaning." Dehumidifier must be placed in a space that does not restrict air flowing into the rear coil or out of the front grill.

Dehumidifier has been installed or restarted recently. The higher the moisture in the room, the longer the dehumidifier will operate.

Humidistat Control is set at MAX.DRY. Dehumidifier will not turn off if Humidistat Control is at MAX.DRY.

DEHUMIDIFIER IS OPERATING BUT ROOM IS NOT DRY ENOUGH.

Humidistat Control is set too low. Turn the Humidistat Control to a higher setting.

Dehumidifier has been installed or restarted recently. The higher the moisture in the room air, the longer it takes for the room air to become dry.

Dehumidifier does not have sufficient clearance to operate. Air flow to front grill is blocked. See "Selecting a Location."

Room temperature is too low. Unit will not operate satisfactorily if the room temperature is below 65°F (18°C). See "Operating Conditions."

Refer to causes under DEHUMIDIFIER RUNS TOO MUCH.

FROST APPEARS ON COILS ABOVE BUCKET OR DRIP TRAY.

Dehumidifier has been turned on recently. This is normal due to refrigerant rushing through the coil. Frost will usually disappear within 60 minutes.

Room Temperature is too low. All models will operate satisfactorily at temperatures greater than 65° F (18°C). Models with a moisture removal greater than 40 pints per 24 hours will operate satisfactorily at a temperature no lower than 50°F (10°C). See "Operating Conditions".

NOISE IS LIKE A FAN.

Air is moving through the dehumidifier. This is a normal sound.



When the actual seal is affixed to a dehumidifier and the water removal capacity rating for that dehumidifier appears in the AHAM Certification Directory, it signifies that the rating is certified by Frigidaire Company and verified by the Association of Home Appliance Manufacturers as complying with American National Standard B149.1.