

This Owner's Manual is provided and hosted by [Appliance Factory Parts](#).



# BROAN RMIP33 Owner's Manual

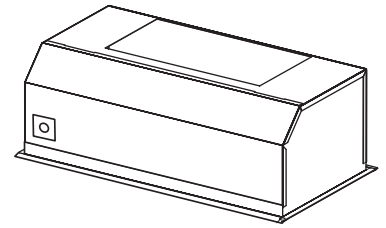
[Shop genuine replacement parts for BROAN RMIP33](#)



[Find Your BROAN HVAC Parts - Select From 1309 Models](#)

----- Manual continues below -----

### RMIP SERIES INSERT



Especially designed to be installed in custom hood for use over residential commercial-style cooking surfaces.

A complete installation requires several optional components. Refer to page 2 when planning your installation.

#### FEATURES

- Cabinet mount – custom application
- Widths: 33", 45"
- Halogen lighting (33"– 2 x 50 watt; 45"– 3 x 50 watt PAR20)  
Lamps not included
- Controls: rocker switches for lighting and on-off, knob for infinite speed
- Heat Sentry™ turns blower ON to HIGH speed when excess heat is detected

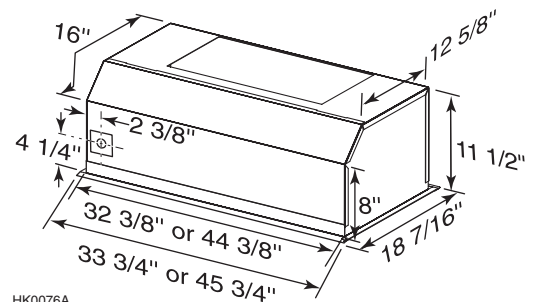
#### OPTIONS

- Custom hood liners (RML33 or RML45 Series):  
Widths - 36", 42", 48", 54" and 60"  
Adjustable depth - see liner spec. sheet for details  
Stainless Steel construction - protects custom hood base and wipes clean easily
- Dishwasher-safe stainless steel baffle filters RBFIP Series
- Backsplash (RMP Series):  
Widths - 36", 42", 48", 60"  
Stainless Steel construction - protects back wall and wipes clean easily
- RMIPWC Remote control: With Stainless Steel faceplate, to fit any décor.

#### INSERT SPECIFICATIONS

120 Vac, 60 Hz

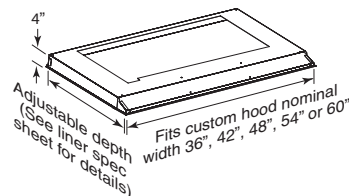
Amps (without blower): 0.8 (RMIP33) 1.3 (RMIP45)



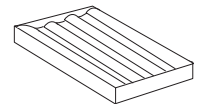
HK0076A

Mount insert so bottom of custom hood is 24" to 30" above cooking surface.

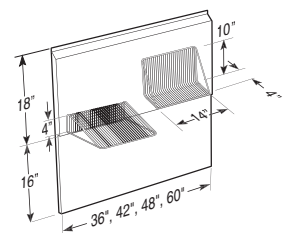
Custom Hood Liner  
RML33 or RML45 Series



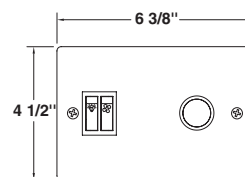
Baffle Filters  
RBFIP Series



Backsplash  
RMP Series



RMIPWC Remote Control



Broan-NuTone LLC, 926 West State Street, Hartford, WI 53027 (1-800-637-1453)

NuTone, Inc., 4820 Red Bank Road, Cincinnati, OH 45227 (1-800-543-8687)

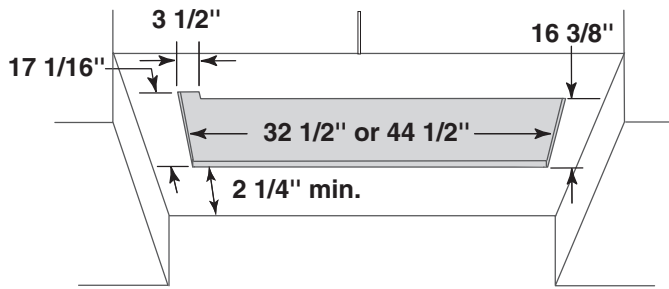
Broan-NuTone Canada, Inc., 1140 Tristar Drive, Mississauga, Ontario, L5T 1H9 (1-888-882-7626)

REFERENCE	QTY.	REMARKS	Project
			Location
			Architect
			Engineer
			Contractor
			Submitted by <span style="float: right;">Date</span>

# RMIP MOUNTING

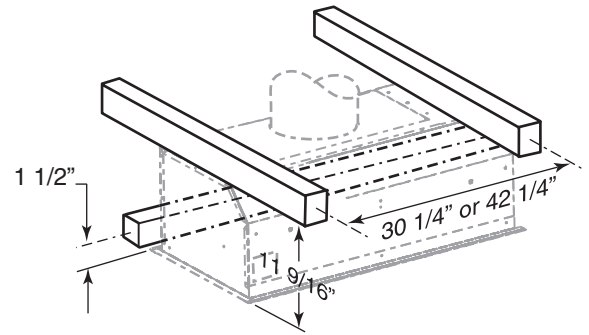
## SIZE OF THE CUT-OUT

NOTE: If optional RML series liner is used, refer to installation instructions for size and location of the cut-out.

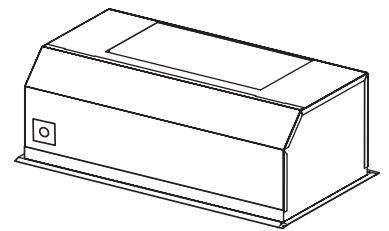


NOTE: The 3 1/2\" notch must be cut only if the RMIPWC optional wall control will be installed.

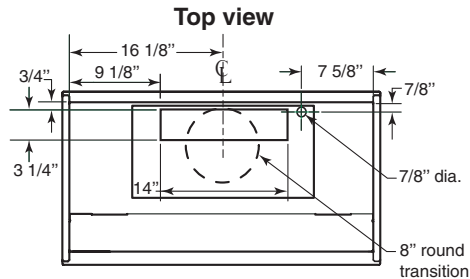
## Suggested Custom Hood Internal Framework



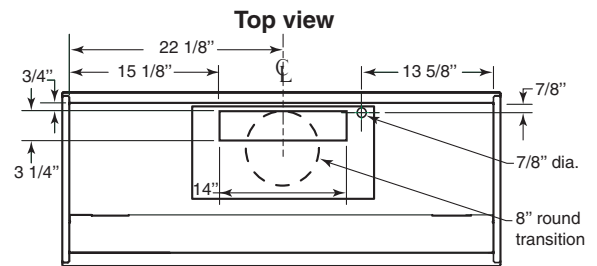
# RMIP SERIES INSERTS BLOWER DUCTING POSITIONS



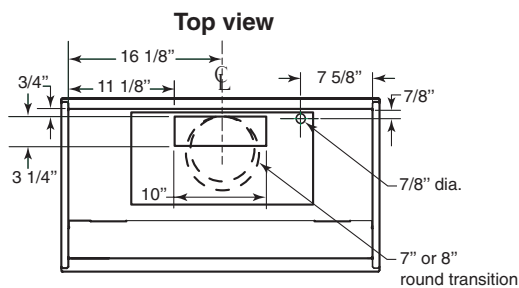
MODEL RMIP33 WITH P8 BLOWER (Vertical Outlet)



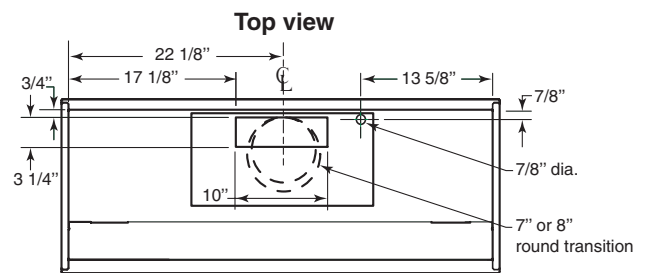
MODEL RMIP45 WITH P8 BLOWER (Vertical Outlet)



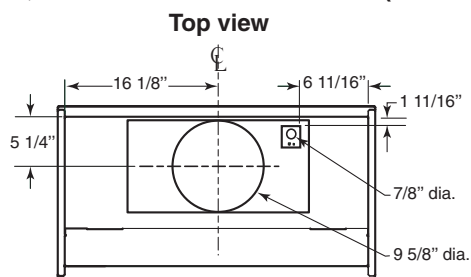
MODEL RMIP33 WITH P5 BLOWER (Vertical Outlet)



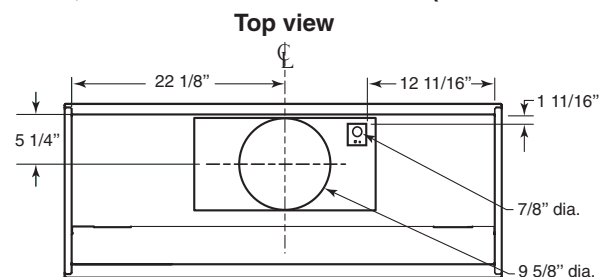
MODEL RMIP45 WITH P5 BLOWER (Vertical Outlet)



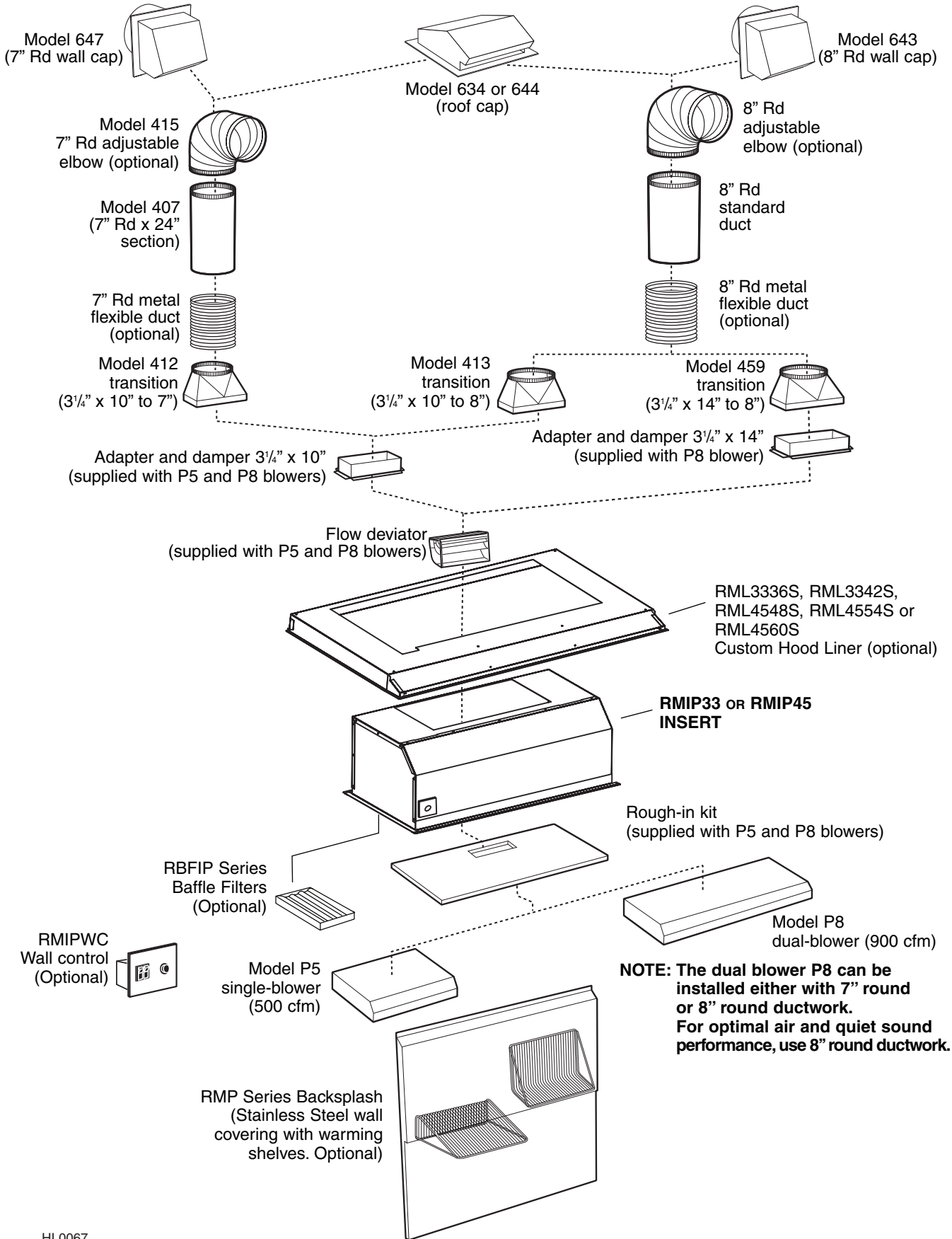
MODEL RMIP33 WITH 331H, 332H, 335, 336, HLB3, HLB6, HLB9 OR HLB11 BLOWER (Vertical Outlet)



MODEL RMIP45 WITH 331H, 332H, 335, 336, HLB3, HLB6, HLB9 OR HLB11 BLOWER (Vertical Outlet)



# - RMIP33 AND RMIP45 INSERT SYSTEM - INTERIOR BLOWERS



# - RMIP33 AND RMIP45 INSERT SYSTEM - IN-LINE AND EXTERIOR BLOWERS

