

This Owner's Manual is provided and hosted by [Appliance Factory Parts](#).



HAMILTON BEACH 54614 Owner's Manual

[Shop genuine replacement parts for HAMILTON
BEACH 54614](#)



[Find Your HAMILTON BEACH Small Appliance Parts - Select From 252 Models](#)

----- Manual continues below -----

Hamilton Beach®

Blender

READ BEFORE USE

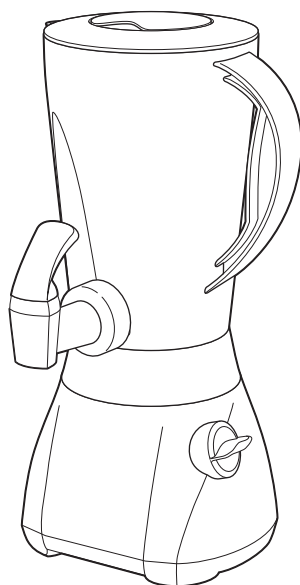
Mélangeur

LIRE AVANT L'UTILISATION

Licuada

LEA ANTES DE USAR

Le invitamos a leer cuidadosamente este instructivo antes de usar su aparato.



English	2
USA: 1-800-851-8900	
Visit hamiltonbeach.com for delicious recipes and to register your product online!	
Français	10
Canada : 1-800-267-2826	
Consulter hamiltonbeach.ca pour des recettes délicieuses et pour enregistrer votre produit !	
Español	18
México: 01 800 71 16 100	
Visite hamiltonbeach.com.mx para recetas deliciosas y para registrar su producto en línea.	

IMPORTANT SAFEGUARDS

When using electric appliances, basic safety precautions should always be followed, including the following:

1. Read all instructions.
2. To protect against risk of electrical shock, do not put cord, plug, base, or motor in water or other liquid.
3. Close supervision is necessary when any appliance is used by or near children.
4. Unplug cord from outlet when not in use, before putting on or taking off parts, and before cleaning.
5. Avoid contacting moving parts.
6. Do not operate any appliance with a damaged cord or plug, or after the appliance malfunctions, or is dropped or damaged in any manner. Call our toll-free customer service number for information on examination, repair or electrical or mechanical adjustment.
7. The use of attachments, including canning jars, not recommended or sold by the appliance manufacturer may cause a risk of injury to persons.
8. Do not use outdoors.
9. Do not let cord hang over edge of table or counter, or touch hot surfaces, including the stove.
10. Keep hands and utensils out of jar while blending to reduce the risk of severe injury to persons or damage to the blender. A rubber spatula may be used but must be used only when blender is not running.
11. Blades are sharp; handle carefully—especially when assembling, disassembling or cleaning inside blender jar.
12. Do not use a broken, chipped, or cracked blender jar.
13. Do not use broken, cracked, or loose cutting blades.
14. To reduce the risk of injury, never place cutting assembly blades on base without jar properly attached.
15. Always operate blender with lid in place.
16. When blending hot liquids, remove center-piece of two-piece lid. Hot liquids may push lid off jar during blending. To prevent possible burns: do not fill blender jar beyond the 3 cup (750 ml) level. With the protection of an oven mitt or thick towel, place one hand on top of lid. Keep exposed skin away from lid. Start blending at lowest speed.
17. Screw on cutting assembly firmly. Injury can result if moving blades accidentally become exposed.
18. If the jar should turn when the motor is switched ON, switch OFF immediately and tighten jar onto cutting assembly.
19. Do not leave blender unattended while it is operating.
20. To disconnect cord, turn the control to OFF. Then remove plug from wall outlet.
21. Do not use appliance for other than intended purpose.

SAVE THESE INSTRUCTIONS!

Other Consumer Safety Information

This appliance is intended for household use only. Use for food or liquids only.

WARNING! Shock Hazard: This appliance has a polarized plug (one wide blade) that reduces the risk of electric shock. The plug fits only one way into a polarized outlet. Do not defeat the safety purpose of the plug by modifying the plug in any way or using an adaptor. If the plug does not fit, reverse the plug. If it still does not fit, have an electrician replace the outlet.

The length of the cord used on this appliance was selected to reduce the hazards of becoming tangled in, or tripping over, a longer cord. If a longer cord is necessary, an approved extension cord may be used. The electrical rating of the extension cord must be equal to or greater than the rating of the blender. Care must be taken to arrange the extension cord so that it will not drape over the countertop or tabletop where it can be pulled on by children or accidentally tripped over.

Do not place blender jar in the freezer filled with food or liquid. The contents may freeze and may result in damage to the cutting blades, jar, blender and possibly result in personal injury.

NOTICE: To prevent leakage of liquids from your blender jar, the round rubber gasket must be properly placed between jar and cutting assembly as shown in the diagram on page 4.

Wattage/Peak Power Information

The wattage/ampere rating of the blender is determined by an Underwriter's Laboratory test and is based on available cutting blades and jar combinations that may not be provided with your unit, but are available as replacement parts. This is a measure of input wattage/amperes after 30 seconds of operation. The blender as provided may draw significantly less power.

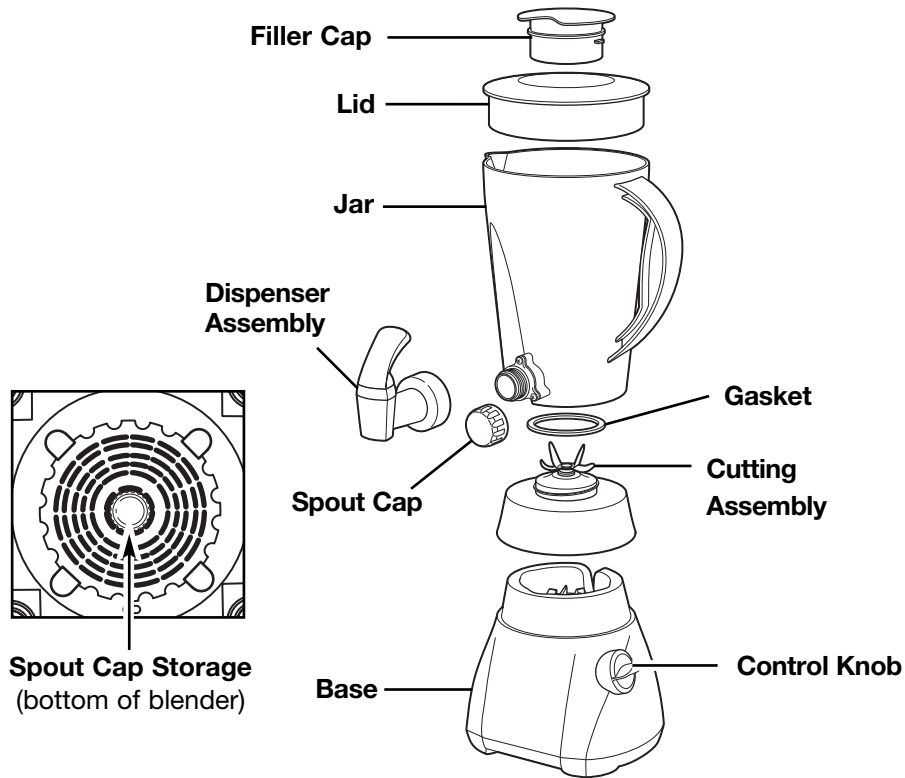
Peak power is the measure of the motor wattage during the first seconds of operation. This is when a blender requires the most power to crush ice, frozen fruit, etc. This is a better measure of what a blender motor can consume when power is needed most.

Optional Accessory

Hamilton Beach Stay or Go™ Personal Blending Jar (AC16) may be purchased separately and used with this appliance.

Parts and Features

Before First Use: After unpacking blender, wash everything except blender base in hot, soapy water. Dry thoroughly. Wipe blender base with a damp cloth or sponge. **DO NOT IMMERSE BASE IN WATER.** Care should be taken when handling the cutting assembly as the blades are very sharp.



Control Knob Setting	Blender Speed
Dispense	1
Milkshake	2
Smoothie	3
Icy Drink	4

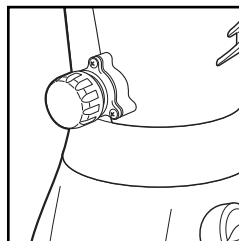
How to Assemble

IMPORTANT: Your blender jar and cutting assembly are subject to wear during normal use. Always inspect jar for nicks, chips, or cracks. Always inspect cutting assembly for broken, cracked, or loose blades. If jar or cutting assembly is damaged, do not use. Call our toll-free customer service number to obtain replacement parts.

1. Make sure blender is unplugged. Place blender base on clean, dry surface.
2. Fit gasket over blades as shown in illustration on page 4. The gasket must lie flat. Set jar on top of gasket and screw on cutting assembly. Make sure the cutting assembly is firmly screwed onto the jar.

3. Set jar into place on blender base, making sure it is securely seated. If not, gently rock the jar until seated.

OPTIONAL: When dispenser is not



needed, replace dispenser with spout cap. Remove dispenser by rotating counterclockwise (see

“How to Clean” section). Insert spout cap on jar. Turn spout cap clockwise to tighten.

4. When spout cap is not in use, snap onto bottom of blender base for storage.

How to Operate

1. Plug cord into outlet.
2. Put ingredients in jar. Place lid with filler cap on jar.
3. Process food or beverages. See the “Blending Specific Foods” section for speeds and processing tips.

NOTE: When blending thin liquids, do not fill above the 32-ounce/4 cup/1200 ml mark on blender jar.
4. ALWAYS turn blender off and wait until blades have stopped rotating before removing jar.
5. To remove jar after blending is complete, lift the jar straight up. If it is not easily removed, rock gently and lift. Do not twist.

To Use the Dispenser:

To dispense thick liquids (such as milkshakes, smoothies, frozen drinks, etc.), turn the control knob to **DISPENSE** and pull Dispenser Lever up. Turn OFF after dispensing.

NOTE: Blender MUST be ON to dispense thick liquids and frozen drinks.

When dispensing thin liquids, it may not be necessary to turn the blender ON to dispense the liquid.

NOTE: NEVER replace jar onto unit while motor is running.

How to Clean

Quick Cleaning

Quick cleaning should only be used to rinse the blender between batches of processing the same food. When the processing of a single type of food is finished, the blender should be disassembled and thoroughly cleaned as instructed below.

To quick clean, pour 2 cups (500 ml) warm water in jar and add 1 drop liquid dishwashing detergent. Run the blender on **DISPENSE** for 10 seconds. Flush soapy water through dispenser until

cleaned. Discard soapy water. Rinse blender jar with clean water. Flush clean water through dispenser until cleaned.

This function is not a substitute for regular cleaning as instructed below. This function should never be used when blending any mixture containing eggs, milk, or any other dairy products.

Regular Cleaning

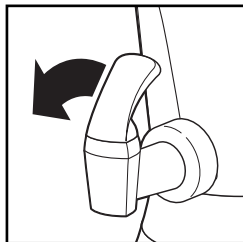
⚠ WARNING

Electrical Shock Hazard.

Disconnect power before cleaning.

Do not immerse cord, plug or base in any liquid.

1. Unplug blender from electrical outlet.
2. Wipe blender base and cord with a damp cloth or sponge. To remove stubborn spots, use a mild, non-abrasive cleanser.
3. To clean jar, unscrew cutting assembly from jar.
4. Carefully remove gasket from cutting assembly.
5. Remove dispenser assembly from jar



by turning counterclockwise four revolutions.

NOTE: All parts except the cutting assembly and gasket may be washed in the dishwasher (on the top rack only). Some part distortion may occur if your household dishwasher temperature is higher than normal or if the parts are placed too close to the heating element.

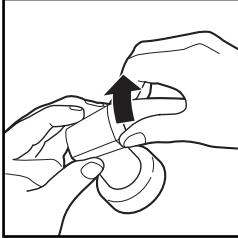
7. **Reassemble** cutting assembly and gasket onto jar, and replace jar onto blender base. Ensure dispenser assembly or spout cap are fully rotated clockwise to lock into position (reverse of Step 5 above).
8. Store blender with lid or filler cap removed to prevent container odor.

NOTE: DO NOT remove seal rings from dispenser adaptor.

6. Carefully wash cutting assembly, gasket, jar, and lid in hot, soapy water. Rinse and dry thoroughly. Do not soak. Do not wash cutting assembly or gasket in a dishwasher.

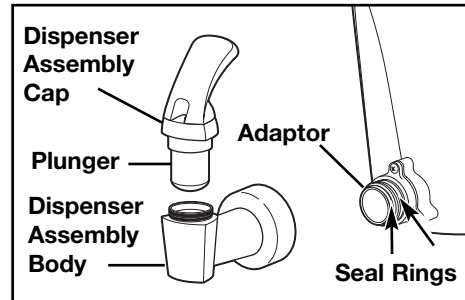
Optional Cleaning

1. Remove dispenser assembly cap by rotating counterclockwise.



2. Wash dispenser and parts in hot, soapy water. Rinse and dry thoroughly. Do not soak.
NOTE: Do not remove seal rings from adaptor.

3. Reassemble plunger inside of dispenser body and rotate cap clockwise until tight.



Troubleshooting

PROBLEM	PROBABLE CAUSE/SOLUTION
Blender leaks.	<ul style="list-style-type: none"> • Tighten cutting assembly on jar. • Make sure gasket is in place on cutting assembly. • Make sure gasket is not damaged. If damaged, please call our toll-free customer service number to order a replacement. • Make sure lid with filler cap is pushed down tightly on jar.
Ice not crushed.	<ul style="list-style-type: none"> • See ice crushing instructions in "Blending Specific Foods" section.
Does not blend well.	<ul style="list-style-type: none"> • Make sure enough liquid has been added. A minimum of 10 ounces (300 ml) is recommended.
Does not dispense.	<ul style="list-style-type: none"> • Make sure blender is ON.
Dispenser leaks.	<ul style="list-style-type: none"> • Make sure seal rings are in place on dispenser adaptor. • Tighten dispenser cap (located above dispenser body).
Cannot remove cutting assembly.	<ul style="list-style-type: none"> • Loosen collar by holding jar and turning cutting assembly counterclockwise.

Blending Tips

Crushing Ice

For best performance, when a recipe calls for liquid, place the liquid in blender jar followed by the ice cubes. Ensure ice cubes are separated. When only crushed ice is desired, add 1 cup (250 ml) of ice cubes to jar. Place lid on blender jar then Pulse on any of the 5 pulse speeds. Allow blades to come to a complete stop between pulses. Continue until ice is crushed to desired consistency. For best results always crush ice immediately after removing from freezer.

General

To add foods when blender is operating, remove filler cap from container lid and add ingredients through the opening. Do not store food or liquids in the blender jar.

Optional Accessories

Hamilton Beach Stay or Go™ Personal Blending Jar (AC16) may be purchased separately and used with this appliance.

To Order Call:

1.800.851.8900 (U.S.)

1.800.267.2826 (Canada)

01.800.71.16.100 (Mexico)

or visit hamiltonbeach.com

Customer Service

If you have a question about your blender, call our toll-free customer service number. Before calling, please note the model, type, and series numbers and fill in that information below. These numbers can be found on the bottom of your blender. This information will help us answer your question much more quickly.

MODEL: _____ **TYPE:** _____ **SERIES:** _____

This warranty applies to products purchased in the U.S. or Canada.

LIMITED WARRANTY

This product is warranted to be free from defects in material and workmanship for a period of three (3) years from the date of original purchase, except as noted below. During this period, we will repair or replace this product at our option. THE FOREGOING WARRANTY IS IN LIEU OF ANY OTHER WARRANTY OR CONDITION, WHETHER EXPRESS OR IMPLIED, WRITTEN OR ORAL INCLUDING, WITHOUT LIMITATION, ANY STATUTORY WARRANTY OR CONDITION OF MERCHANTABILITY OR FITNESS FOR A PARTICULAR PURPOSE. ANY LIABILITY IS EXPRESSLY LIMITED TO AN AMOUNT EQUAL TO THE PURCHASE PRICE PAID, AND ALL CLAIMS FOR SPECIAL, INCIDENTAL AND CONSEQUENTIAL DAMAGES ARE HEREBY EXCLUDED.

There is no warranty with respect to the following, which may be supplied with this product, including without limitation: glass parts, glass containers, cutter/strainers, blades, seals, gaskets, clutches, motor brushes, and/or agitators, etc. This warranty extends only to the original consumer purchaser and does not cover a defect resulting from abuse, misuse, neglect including failure to clean product regularly in accordance with manufacturer's instructions, use for commercial purposes, or any use not in conformity with the printed directions. This warranty gives you specific legal rights, and you may also have other legal rights which vary from state to state, or province to province. Some states or provinces do not allow limitations on implied warranties or special, incidental or consequential damages, so the foregoing limitations may not apply to you.

If you have a claim under this warranty, DO NOT RETURN THE APPLIANCE TO THE STORE! Please call our CUSTOMER SERVICE NUMBER. (For faster service please have model, series, and type numbers ready for operator to assist you.)

CUSTOMER SERVICE NUMBERS

In the U.S. 1-800-851-8900

In Canada 1-800-267-2826

hamiltonbeach.com

KEEP THESE NUMBERS FOR FUTURE REFERENCE!