

**READ BEFORE USE**  
**LIRE AVANT UTILISATION**  
**LEA ANTES DE USAR**

Visit [hamiltonbeach.com](http://hamiltonbeach.com) for delicious recipes, tips, and to register your product online!



Consultez [hamiltonbeach.ca](http://hamiltonbeach.ca) pour de délicieuses recettes, des conseils pratiques et pour enregistrer votre produit !

¡Visite [hamiltonbeach.com.mx](http://hamiltonbeach.com.mx) para recetas deliciosas, consejos, y para registrar su producto en línea!

**Questions?**

Please call us – our friendly associates are ready to help.  
USA: 1.800.851.8900

**Questions?**

N'hésitez pas à nous appeler – nos associés s'empresseront de vous aider.  
CAN: 1.800.267.2826

**¿Preguntas?**

Por favor llámenos – nuestros amables representantes están listos para ayudar.

MEX: 01 800 71 16 100

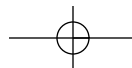
*Le invitamos a leer cuidadosamente este instructivo antes de usar su aparato.*

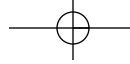
**Hamilton  
Beach®**

*Toaster Oven*  
*Four grille-pain*  
*Horno de la tostadora*



English .....	2
Français .....	16
Español .....	30





## **WARNING**



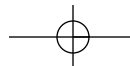
### **Fire Hazard.**

- If contents ignite, do not open oven door. Unplug oven and allow contents to stop burning and cool before opening door.
- Do not operate unattended while in Toast or Broil modes.
- Do not use with oven cooking bags.
- Always allow at least one inch between food and heating element.
- Always unplug toaster oven when not in use.
- Regular cleaning reduces risk of fire hazard.

## **IMPORTANT SAFEGUARDS**

When using electrical appliances, basic safety precautions should always be followed, including the following:

1. Read all instructions.
2. Do not touch hot surfaces. Use handles or knobs.
3. To protect against electrical shock do not immerse cord, plug, or toaster oven in water or other liquid.
4. Close supervision is necessary when any appliance is used by or near children.
5. Unplug from outlet when not in use and before cleaning. Allow to cool before cleaning appliance and putting on or taking off parts.
6. Do not operate any appliance with a damaged cord or plug, or after the appliance malfunctions or is dropped or damaged in any manner. Call our toll-free customer service number for information on examination, repair, or adjustment.
7. The use of accessory attachments not recommended by the appliance manufacturer may cause injuries.
8. Do not use outdoors.
9. Do not let cord hang over edge of table or counter or touch hot surfaces.
10. Do not place on or near a hot gas or electric burner or in a heated oven.
11. Extreme caution must be used when moving an appliance containing hot oil or other hot liquids.
12. To disconnect, turn all controls to OFF; then remove plug from wall outlet.
13. Use extreme caution when removing pan or disposing of hot grease.
14. Do not clean with metal scouring pads. Pieces can break off the pad and touch electrical parts, creating a risk of electrical shock.
15. Oversize foods or metal utensils must not be inserted in a toaster oven as they may create a fire or risk of electric shock.
16. A fire may occur if the toaster oven is covered, touching, or near flammable material, including curtains, draperies, walls, and the like, when in operation. Do not store any item on top of the appliance when in operation or before the appliance cools down.
17. Extreme caution should be exercised when using containers constructed of materials other than metal or glass.
18. Do not store any materials, other than manufacturer-recommended accessories, in this oven when not in use.



19. Do not place any of the following materials in the oven: paper, cardboard, plastic, and the like.
20. Do not cover crumb tray or any part of the oven with metal foil. This will cause overheating of the oven.
21. To turn oven off, press the STOP button. See "Parts and Features" section.
22. Do not place eyes or face in close proximity with tempered safety glass door, in the event that the safety glass breaks.
23. Always use appliance with crumb tray securely in place.
24. Do not use appliance for other than intended use.
25. Clean oven interior carefully. Do not scratch or damage heating element tube.

## SAVE THESE INSTRUCTIONS!

### OTHER CONSUMER SAFETY INFORMATION

**This appliance is intended for household use only.**

**WARNING! Shock Hazard:** This appliance has a polarized plug (one wide blade) that reduces the risk of electric shock. The plug fits only one way into a polarized outlet. Do not defeat the safety purpose of the plug by modifying the plug in any way or using an adapter. If the plug does not fit, reverse the plug. If it still does not fit, have an electrician replace the outlet.

The length of the cord used on this appliance was selected to reduce the hazards of becoming tangled in or tripping over a longer cord. If a longer cord is necessary, an approved extension cord may be used. The electrical rating of the extension cord must be equal to or greater than the rating of the appliance. Care must be taken to arrange the extension cord so that it will not drape over the countertop or tabletop where it can be pulled on by children or accidentally tripped over.

This appliance is equipped with a fully tempered safety glass door. The tempered glass is four times stronger than ordinary glass and more resistant to breakage. Tempered glass can break; however, it breaks into pieces with no sharp edges. Care must be taken to avoid scratching door surface or nicking edges. If the door has a scratch or nick, call our toll-free customer service number.

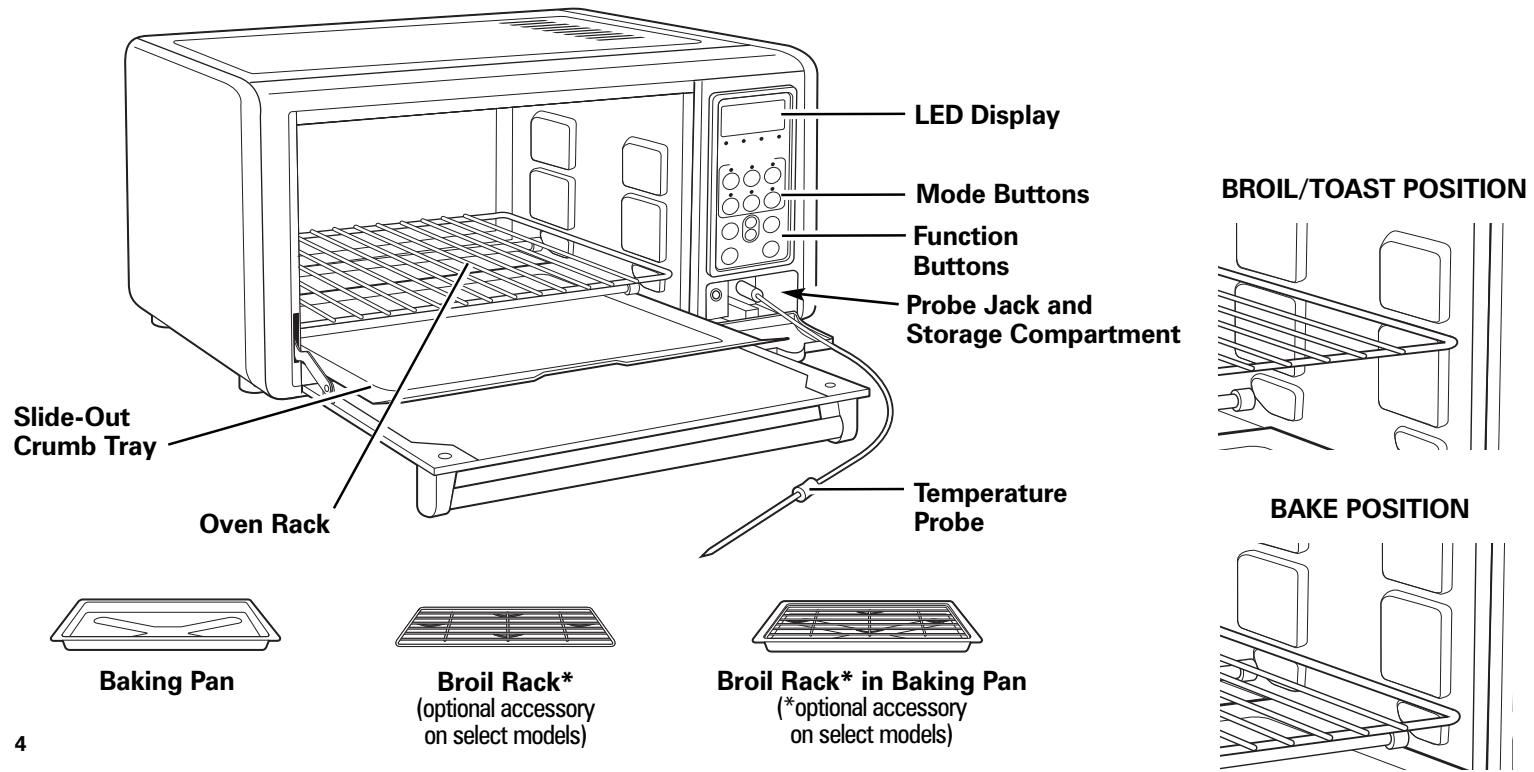
Always unplug your toaster oven from the outlet when not in use.

# Parts and Features

## Before First Use

Most heating appliances produce an odor and/or smoke when used the first time. Plug unit into outlet. Press BAKE button. Use UP and DOWN arrows to set temperature to 450°F; then press TIMER button and set for 5 minutes. Let oven preheat for approximately 5 minutes. The odor should not be present after this initial preheating. **Wash baking pan, broil rack\*, and oven rack before using.**

**NOTE:** \*Broil rack is an optional accessory on select models.

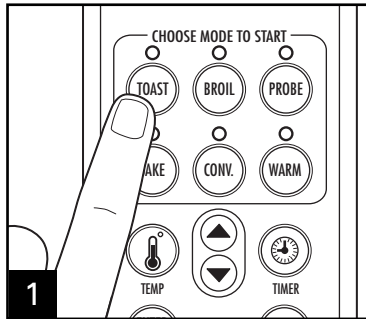


# How to Toast

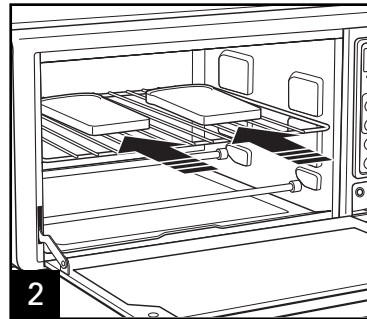
**⚠ WARNING Fire Hazard.**

- If contents ignite, do not open oven door. Unplug oven and allow contents to stop burning and cool before opening door.
- Do not leave appliance unattended when in operation.
- Always unplug toaster oven when not in use.

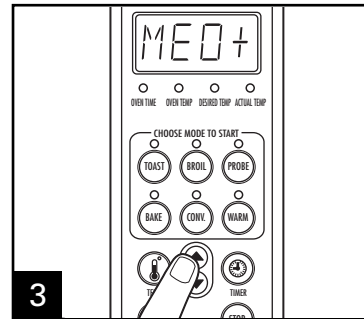
Before first use: Wash all removable parts in warm, soapy water and dry thoroughly.



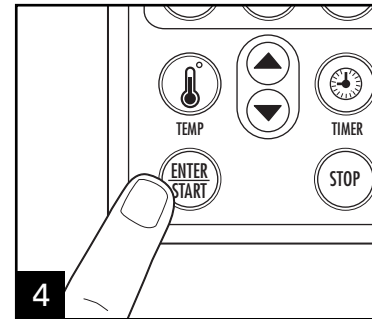
**1** Press TOAST button. The LED display will read "CNTR RACK"—this is a prompt to center the rack in the oven for best toasting results.



**2** Place food into oven. **NOTE:** MED is the default toast shade. After first use, the last shade selected will be the default.



**3** Press the up/down buttons if a different toast shade is desired. Choose from LITE, LT+, MED, MED+, and DARK.



**4** Once a shade is selected, press ENTER/START. A beep will sound when toasting cycle is complete. The desired shade may be changed at any point during the toasting cycle by pressing the up/down buttons.

- To toast frozen pastry or waffles, select a light color and toast directly on oven rack. If pastry has a glaze or frosting, use baking pan to prevent dripping.
- The number of slices of bread, the bread freshness, and the starting temperature of the oven will affect toast color. Adjust the toast shade to achieve the desired color.

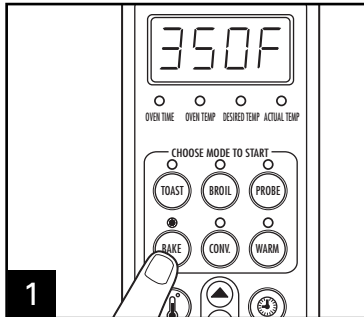
- When toasting, condensation may form on oven door. A toaster is open and allows moisture to escape. A toaster oven is a closed space and so moisture is slow to escape. This is normal.
- At the end of the toast cycle, remove toast immediately or the heat remaining in the toaster oven will continue to cook and dry out your toast.

# How to Bake

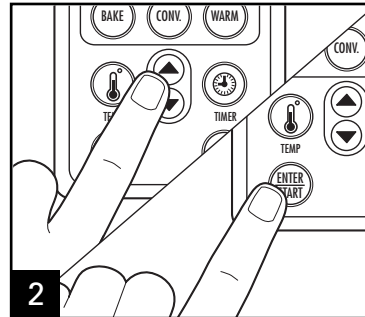
## **⚠ WARNING** Fire Hazard.

- If contents ignite, do not open oven door. Unplug oven and allow contents to stop burning and cool before opening door.

- Do not use oven cooking bags.
- Always allow at least one inch between food and heating element.
- Always unplug toaster oven when not in use.

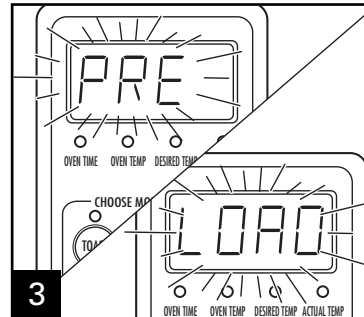


**1** Press BAKE button. The LED display will read "350F" or the last temperature selected in bake mode.

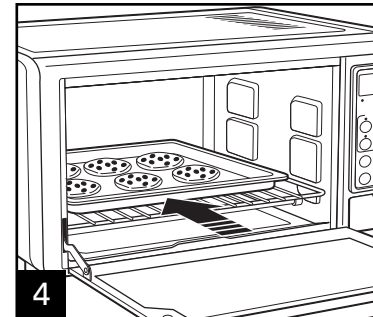


**2** Press the up/down buttons if a different temperature is desired (between 200° and 450°F). Once a temperature is selected, press ENTER/START.

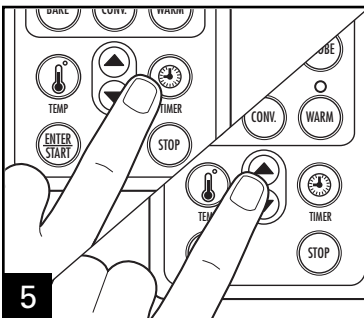
**NOTE:** 350° is the default bake temperature. After first use, the last temperature selected will be the default.



**3** The oven will turn on and begin to heat - this will be evident as the LED display will flash "PRE" and then "HEAT." A beep will sound when preheated, and the LED display will flash "LOAD" and then "FOOD."



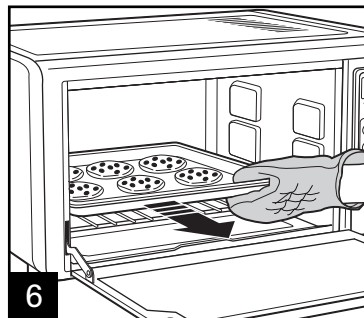
**4** Place food into oven.



**5**

If desired, press TIMER button to set bake time. The LED will default to 30 minutes and display "0:30." Press the up/down buttons to set the desired baking time in 1 minute increments, or simply hold the button down longer to scroll in 10 minute increments.

Once a bake time has been selected, press ENTER/START.



**6**

The timer will begin to count down and beep when baking is complete. Remove food using oven mitts. Unplug from outlet when finished.

**NOTE:** The oven is equipped with a two-hour auto shutoff timer. If no bake time is selected, the unit will begin to count down from 2 hours, including pre-heat time, then shut off.

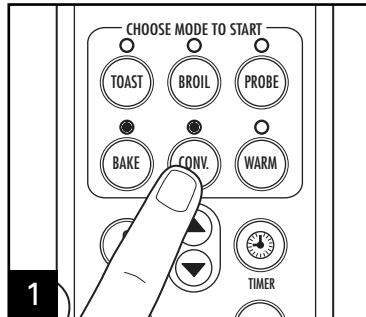
# Convection Bake

(on select models)

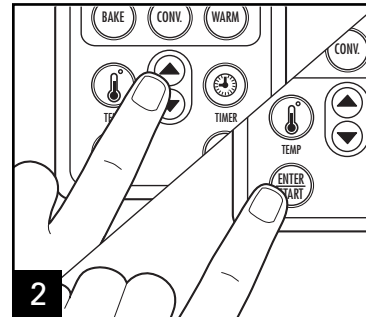
## **⚠ WARNING** Fire Hazard.

- If contents ignite, do not open oven door. Unplug oven and allow contents to stop burning and cool before opening door.

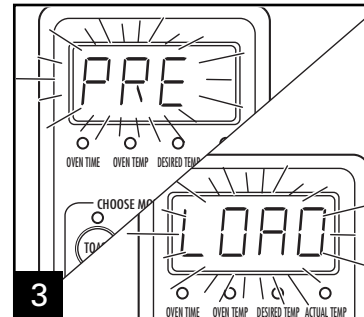
- Do not use oven cooking bags.
- Always allow at least one inch between food and heating element.
- Always unplug toaster oven when not in use.



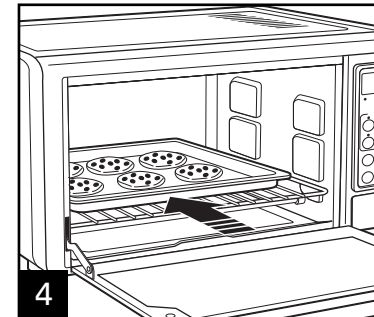
Press CONV button. Both the BAKE and CONV lights will illuminate.



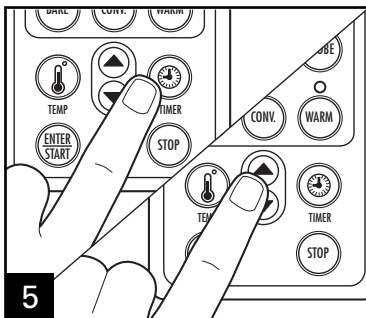
Press the up/down buttons if a different temperature is desired (between 200° and 450°F). Once a temperature is selected, press ENTER/START.



The oven will turn on and begin to heat—this will be evident as the LED display will flash “PRE” and then “HEAT.” A beep will sound when preheated, and the LED display will flash “LOAD” and then “FOOD.”

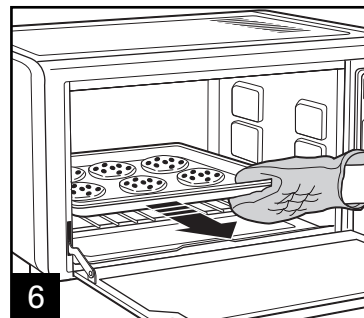


Place food into oven.



Press TIMER button to set bake time. The LED will default to 30 minutes and display “0:30.” Press the up/down buttons to set the desired baking time in 1 minute increments, or simply hold the button down longer to scroll in 10 minute increments.

Once a bake time has been selected, press ENTER/START.



The timer will begin to count down and beep when baking is complete. Remove food using oven mitts. Unplug from outlet when finished.

**NOTE:** The oven is equipped with a two-hour auto shutoff timer. If no bake time is selected, the unit will begin to count down from 2 hours, including preheat time, then shut off.

# How to Broil

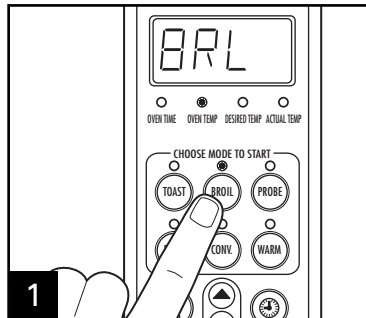


**WARNING**

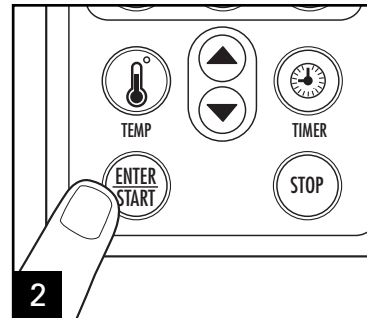
## Fire Hazard.

- If contents ignite, do not open oven door. Unplug oven and allow contents to stop burning and cool before opening door.

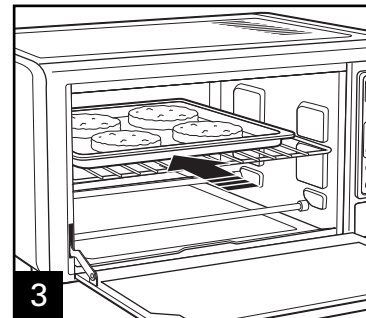
- Do not leave oven unattended during operation.
- Keep one inch between food and heating element.
- Do not use oven cooking bags.
- Do not heat foods in plastic containers.
- Follow food manufacturer's instructions.



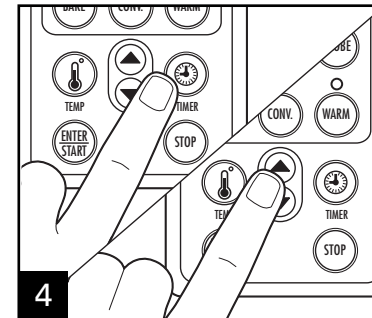
**1** Press BROIL button. The LED display will read "BRL."



**2** Press ENTER/START. The oven will begin heating at highest temperature setting.



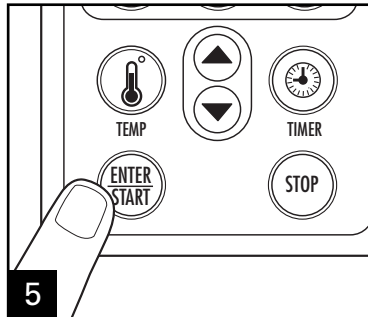
**3** Place food into oven using broil rack.



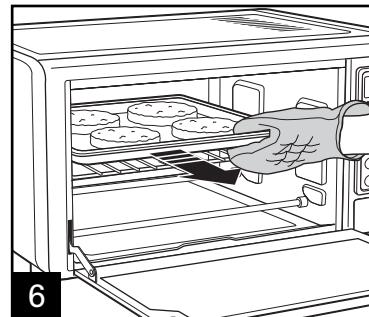
**4** If desired, press TIMER button to set broil time. The LED will default to 20 minutes in broil mode and display "0:20." Press the up/down buttons to set the desired broil time in 1 minute increments, or simply hold the button down longer to scroll in 10 minute increments.



## How to Broil (cont.)



5 Once a broil time has been selected, press ENTER/START. The timer will begin to count down and beep when finished.



6 Remove food using oven mitts. Unplug from outlet when finished.

**NOTE:** The oven is equipped with a two-hour auto shutoff timer. The unit will begin to count down from 2 hours, including preheat time, then shut off.

FOOD	APPROX. BROIL TIME
1/4 lb. Hamburgers	30 minutes
Hot Dogs	15 minutes
Sausage Links or Patties (pierce casings before cooking)	15 to 20 minutes
Fish	15 minutes

These cooking times are an average and should be adjusted to individual preferences. Turn foods halfway through cooking time.

**NOTE:** Turn Sausage Links or Patties after 3/4 of cooking time.

### NOTES:

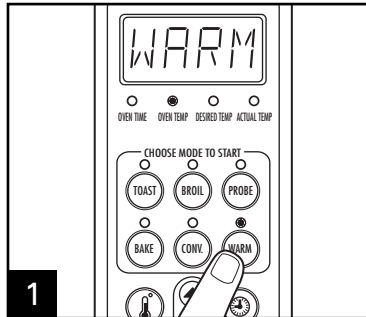
- Cook beef and pork to at least 160°F (71°C).
- Cook chicken to at least 165°F (73°C).
- Cook fish until at least 145°F (63°C) or until opaque or flakes with a fork.
- Visit [foodsafety.gov](http://foodsafety.gov) for more safe cooking temperature information.
- In broil mode, the probe can be used to measure temperature by pressing the PROBE button. The temperature will display for five seconds.

# How to Warm

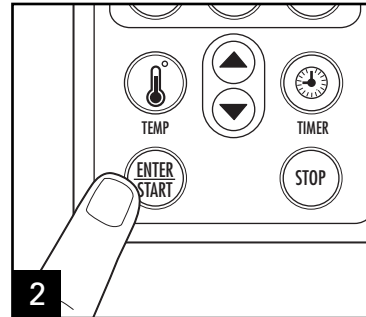
## **⚠ WARNING** Fire Hazard.

- If contents ignite, do not open oven door. Unplug oven and allow contents to stop burning and cool before opening door.

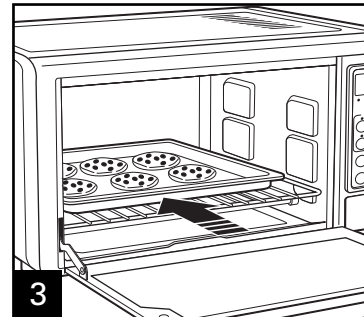
- Do not use oven cooking bags.
- Always allow at least one inch between food and heating element.
- Always unplug toaster oven when not in use.



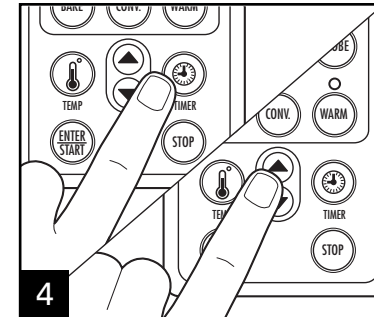
**1** Press WARM button. The LED display will read "WARM." **NOTE:** If you would like the oven to keep your food warm after cooking/baking using the BAKE, CONVECTION or PROBE modes, simply press the WARM button at any time during the cooking/baking cycle. Once the set cooking time has elapsed, the unit will switch to WARM mode for the auto default time of 2 hours.



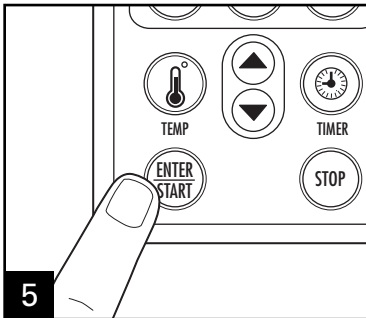
**2** Press ENTER/START. The oven will turn on and begin to heat.



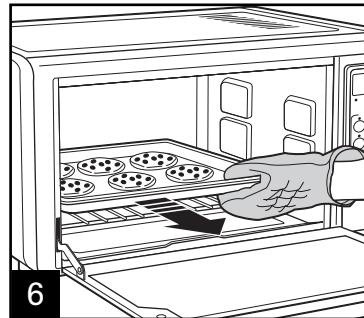
**3** Place food into oven.



**4** Press TIMER button to set keep warm time. The LED will default to 1 hour in warm mode and display "1:00." Press the up/down buttons to set the desired keep warm time in 1 minute increments or simply hold the button down longer to scroll in 10 minute increments.



**5** Once a time has been selected, press ENTER/START. The timer will begin to count down and beep when the keep warm cycle is completed.



**6** Remove food using oven mitts. Unplug from outlet when finished.

**NOTE:** The oven is equipped with a two-hour auto shutoff timer. The unit will begin to count down from 2 hours, including preheat time, then shut off.

## How to Use the Probe

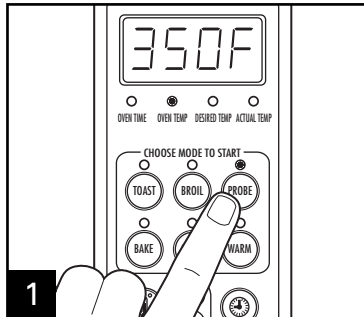


**WARNING**

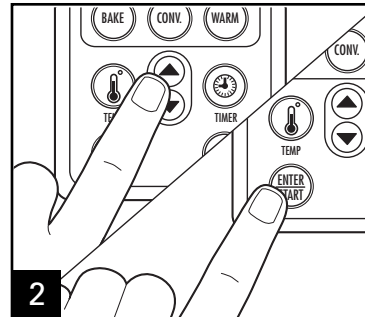
### Fire Hazard.

- If contents ignite, do not open oven door. Unplug oven and allow contents to stop burning and cool before opening door.

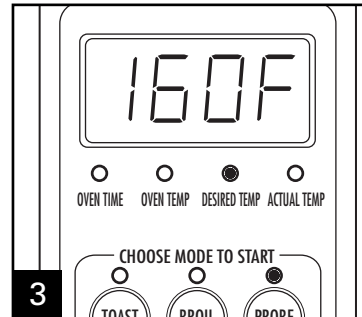
- Do not use oven cooking bags.
- Always allow at least one inch between food and heating element.
- Always unplug toaster oven when not in use.



1 Press PROBE button. The LED display will read "350F" or the last temperature selected in the probe mode. **NOTE:** 350° is the default temperature. After first use, the last temperature selected will be the default.

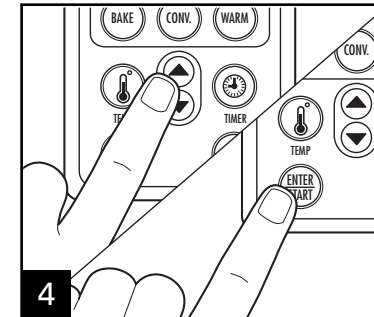


2 Press the up/down buttons if a different temperature is desired (between 200° and 450°F). Once a temperature is selected, press ENTER/START.



3 The oven will then prompt you to set the desired probe temperature. The LED display will flash "160F."

**NOTE:** 160° is the default probe temperature. After first use, the last temperature selected will be the default.

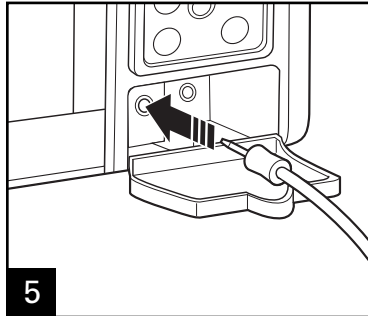


4 Press the up/down buttons if a different temperature is desired (choose between 140° to 180°F), then press ENTER/START button. The LED display will read "PRE HEAT" to let you know the unit is heating. When the desired oven temperature is reached, the LED display will read "LOAD FOOD."

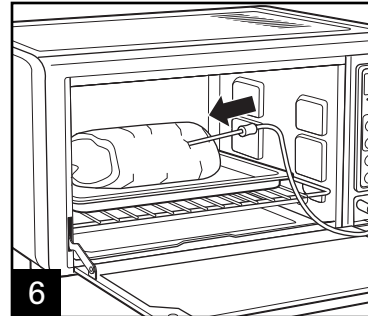
### NOTES:

- Cook beef and pork to at least 160°F (71°C).
- Cook chicken to at least 165°F (73°C).
- Cook fish until at least 145°F (63°C) or until opaque or flakes with a fork.
- Visit [foodsafety.gov](http://foodsafety.gov) for more safe cooking temperature information.
- Probe may be used to measure temperature during bake, convection bake, broil, or warm mode by pressing the PROBE button. The temperature will display for five seconds.

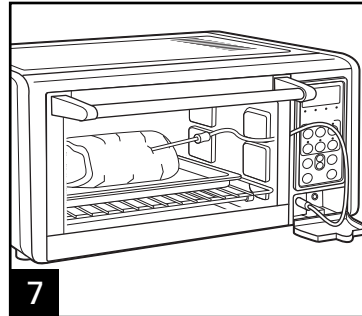
## How to Use the Probe (cont.)



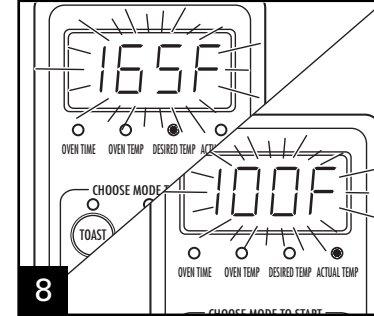
5 Plug temperature probe into jack located in probe storage area.



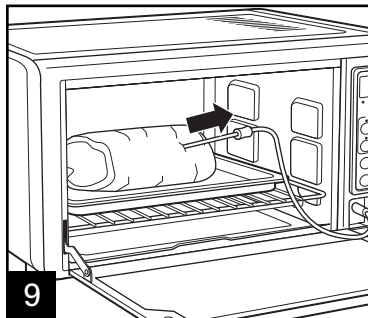
6 Place food into oven. Insert probe approximately 1 inch (25 mm) into the thickest part of the food. Ensure the probe does not touch bone, fat, or any part of the oven interior.



7 Ensure the oven door is closed before letting the unit cook.



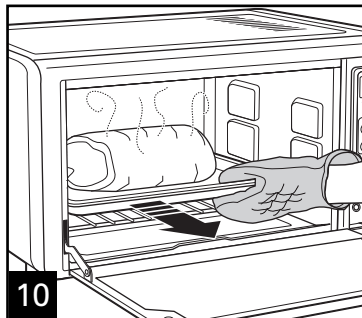
8 The LED display will toggle between the desired food temperature and the actual food temperature. The oven will cook until your food has reached the desired food temperature and beep when finished.



9 Unplug probe from jack; then remove meat and probe from unit using oven mitts. Probe will be hot. Unplug from outlet when finished.

**NOTE:** The oven will automatically shut off when selected temperature is reached and probe is plugged in, unless warm mode is also selected. If probe is unplugged before selected temperature is reached, the oven will shut off two hours from when the Probe mode was selected.

Visit [www.foodsafety.gov](http://www.foodsafety.gov) for more information on safe internal cooking temperatures.



Visit [hamiltonbeach.com](http://hamiltonbeach.com) for delicious recipes, tips, and to register your product online!

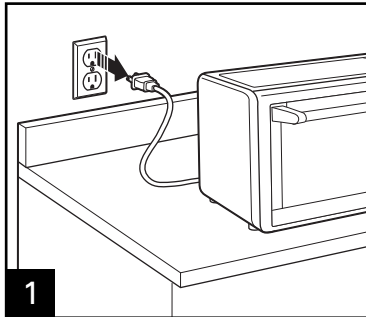
# Cleaning



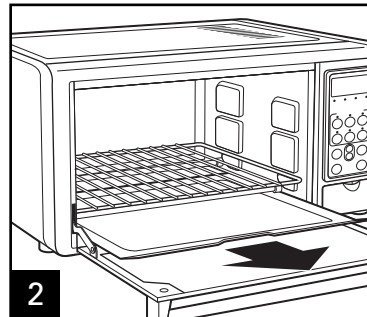
## **WARNING Electrical Shock Hazard.**

Do not clean with metal scouring pads. Pieces can break off pad and touch electrical parts.  
Do not immerse the toaster oven in water.

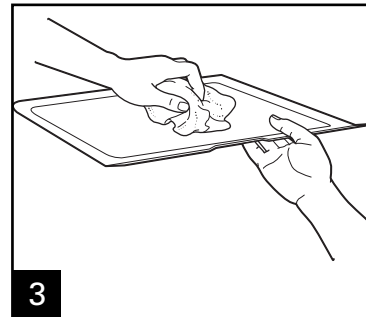
Your toaster oven should be cleaned regularly for best performance and long life. Regular cleaning will also reduce the risk of fire hazard.



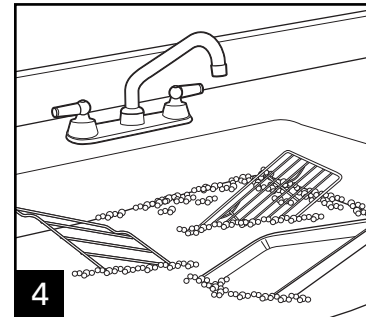
1



2

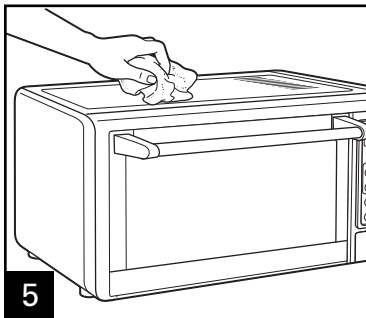


3



4

**NOTE:** Broil rack is an optional accessory on select models.



5

Wipe outside of oven with a damp cloth. Do not use abrasive cleansers or metal scouring pads.

To clean inside of oven, wipe oven walls, bottom of oven, and glass door with a damp, soapy cloth. Repeat with a damp, clean cloth.

For stubborn stains, use a plastic scouring pad.

# Troubleshooting

<b>PROBLEM</b>	<b>PROBABLE CAUSE/SOLUTION</b>
<b>Oven will not heat.</b>	<ul style="list-style-type: none"><li>• Check to make sure electrical outlet is working and the oven is plugged in.</li></ul>
<b>Moisture forms on inside of oven door when toasting.</b>	<ul style="list-style-type: none"><li>• This is normal when toasting in a toaster oven. Moisture is slower to escape from a toaster oven than from a toaster. The amount of moisture will differ between fresh bread, bagels, and frozen pastries.</li></ul>
<b>An odor and smoke come from oven.</b>	<ul style="list-style-type: none"><li>• Smoke and odor are normal during first use of most heating appliances. These will not be present after initial heating period.</li></ul>
<b>Oven will not toast.</b>	<ul style="list-style-type: none"><li>• Check to make sure outlet is working and oven is plugged in.</li></ul>
<b>Some foods burn and some are not done.</b>	<ul style="list-style-type: none"><li>• Adjust oven rack position to center food in oven.</li><li>• Adjust oven temperature or cooking time for best results with your recipes.</li></ul>
<b>Display shows error code "ERR."</b>	<ul style="list-style-type: none"><li>• Temperature sensor inside cavity may be defective. Call the customer service number located on the front of this Use and Care Guide.</li></ul>
<b>Oven displays "PLUG PROBE" when it is already plugged in.</b>	<ul style="list-style-type: none"><li>• Unplug and then replug the probe back into unit. If this still does not work, the probe may be defective. Call the customer service number located on the front cover of this Use and Care Guide.</li></ul>

## *Limited Warranty*

This warranty applies to products purchased in the U.S. and Canada. This is the only express warranty for this product and is in lieu of any other warranty or condition.

This product is warranted to be free from defects in material and workmanship for a period of one (1) year from the date of original purchase. During this period, your exclusive remedy is repair or replacement of this product or any component found to be defective, at our option; however, you are responsible for all costs associated with returning the product to us and our returning a product or component under this warranty to you. If the product or component is no longer available, we will replace with a similar one of equal or greater value.

This warranty does not cover glass, filters, wear from normal use, use not in conformity with the printed directions, or damage to the product resulting from accident, alteration, abuse or misuse. This warranty extends only to the original consumer purchaser or gift recipient. Keep the original sales receipt, as proof of purchase is required to make a warranty claim. This warranty is void if the product is used for other than single-family household use.

We exclude all claims for special, incidental and consequential damages caused by breach of express or implied warranty. All liability is limited to the amount of the purchase price. **Every implied warranty, including any statutory warranty or condition of merchantability or fitness for a particular purpose, is disclaimed except to the extent prohibited by law, in which case such warranty or condition is limited to the duration of this written warranty.** This warranty gives you specific legal rights. You may have other legal rights that vary depending on where you live. Some states or provinces do not allow limitations on implied warranties or special, incidental or consequential damages, so the foregoing limitations may not apply to you.

To make a warranty claim, do not return this appliance to the store. Please call 1.800.851.8900 in the U.S. or 1.800.267.2826 in Canada or visit [hamiltonbeach.com](http://hamiltonbeach.com) in the U.S. or [hamiltonbeach.ca](http://hamiltonbeach.ca) in Canada. For faster service, locate the model, type, and series numbers on your appliance.