

This Owner's Manual is provided and hosted by [Appliance Factory Parts](#).



KRUPS FLF2 Owner's Manual

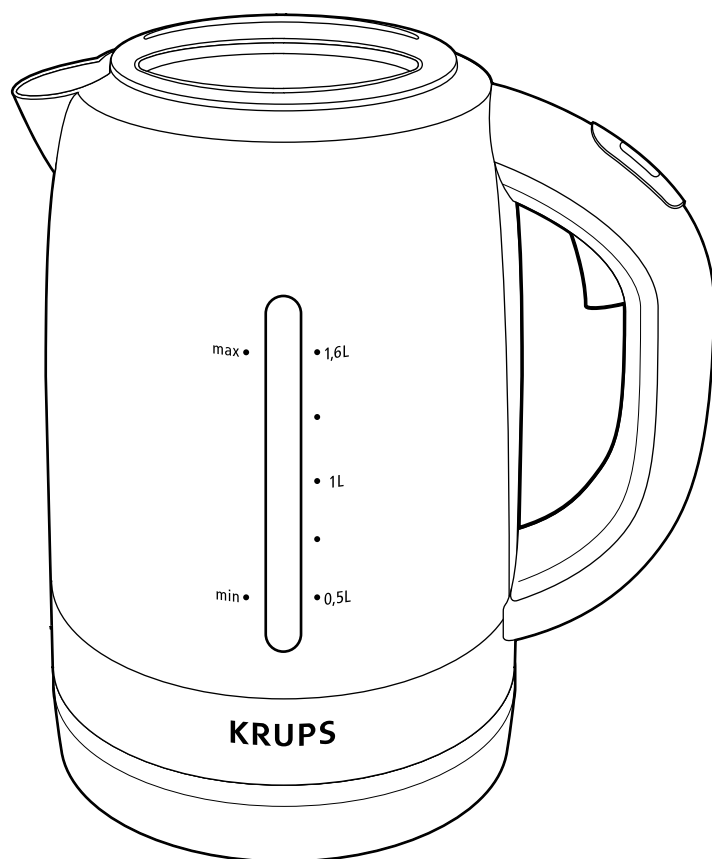
[Shop genuine replacement parts for KRUPS FLF2](#)



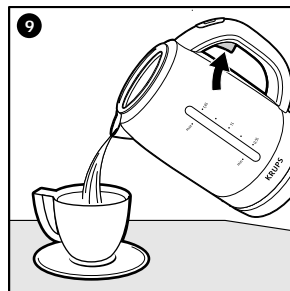
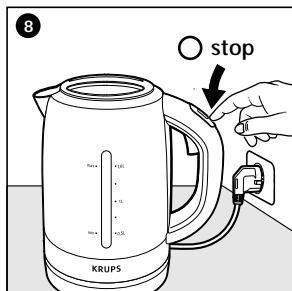
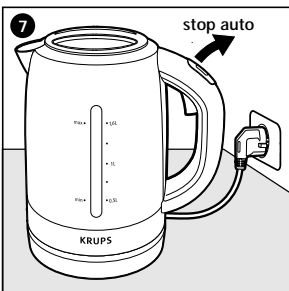
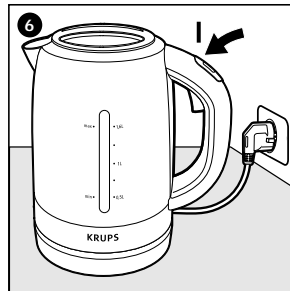
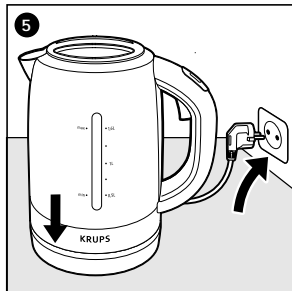
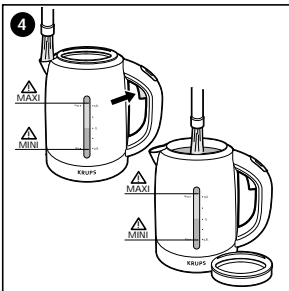
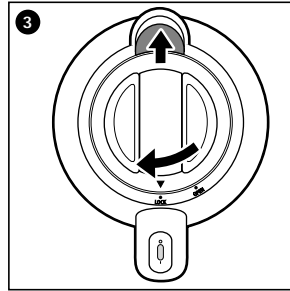
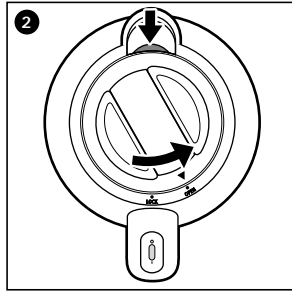
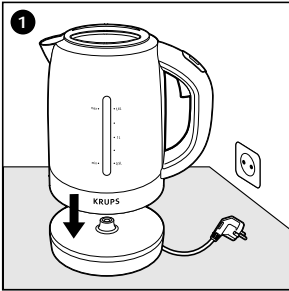
[Find Your KRUPS Small Appliance Parts - Select From 175 Models](#)

----- Manual continues below -----

KRUPS



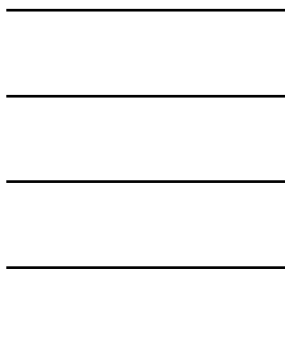
www.krups.com



KRUPS

Aquacontrol

Art. FLF1/FLF2/FLF3



Thank you for choosing an appliance from the **KRUPS** range which is intended exclusively for the heating of water.

Safety recommendations

- Use your kettle only for the heating of drinking water.
- Place the kettle and its cord on a flat heat-resistant surface.
- Keep the kettle and the power cord away from any source of heat, from any wet or slippery surface, and from sharp edges.
- Do not fill to above the max level or below the min level. If the kettle is over-filled, boiling water may be ejected.
- Do not open the lid when the water is boiling.
- Check that the electrical installation conforms with currently applicable standards, and compatible with the power and the voltage indicated underneath your model.
- Connect the kettle only to a socket with an earth incorporated.

Any connection error will nullify the guarantee.

- Your kettle must be used only with the lid closed, and with its associated base.
- The use of multiple sockets and/or mains extension leads is not recommended.
- Do not place the appliance, the base, the power cable or the plug in water or any other liquid.
- Do not use abrasive pads for cleaning.
- To remove the anti-scale filter, take the kettle off its base, and leave it to cool. Never remove the filter when the appliance is full of hot water.
- **Our guarantee excludes kettles which fail or which work badly, due to scale.**
- Never use any descaling method other than that recommended.
- Do not use the kettle if the power cord or the plug is damaged. In order to avoid all danger, you should have the faulty part replaced by a KRUPS approved service centre.

- Do not use the appliance if it is not working correctly or if it has been damaged. Under no circumstances should you dismantle the kettle yourself - this is for your own safety and will negate any guarantee.
- Any operation other than normal cleaning and servicing by the customer should be carried out by a KRUPS approved service centre.
- This product has been designed for domestic use only. Any commercial use, inappropriate use or failure to comply with the instructions, the manufacturer accepts no responsibility and the guarantee will not apply.
- Do not leave the appliance within the reach of children.
- Never move the kettle when it is working.

Use

- Place your kettle and its base on a flat, stable, heat resistance surface. **(1)**
- Before first use, rinse the inside of your kettle next fill it with cold water, boil and empty the kettle, repeat this a couple of times.
- Remove the lid by aligning the " " mark with the " open" position and lifting it off **(2)**. To close the kettle, engage the lid, with the spout cover set back, by placing the " " mark to " open" and turn it anti-clockwise to the " lock" position. The protective cover will block off the pouring spout. **(3)**
- With the kettle unplugged or removed from its base, fill it through the pouring spout while pressing the thumb-release latch or via the open lid, to between the min and max marks. **(4)**
- Close the lid **(3)**, and place the kettle on its base. **(5)**
- Switch on by pressing the " I" switch. **(6)**
- The kettle stops automatically as soon as the water boils. **(7)**
- You can also switch the kettle off at any time during the heating process by pressing the " 0" switch. **(8)**
- To pour, press the thumb-release latch under the handle. **(9)**

- Empty the water from your kettle completely after each use.

Cleaning

To clean your kettle:

- Unplug it or remove it from its base.
- Leave it to cool, and then clean it with a damp sponge.

To clean the filter (depends on the model):

- Clean the filter regularly. Rinse it in clean running water and using a soft, non-metallic brush if needed.

De-scaling

- Descale your kettle regularly.
- Use:
 - 1) a descaler specifically intended for PLASTIC kettles. Follow the manufacturer's instructions closely.
 - 2) or white vinegar.
Pour 1/2 l of vinegar into the kettle. Leave it to work for one hour without heating.
 - 3) or citric acid. Boil 0.5 l of water. Add 25 g of citric acid. Leave it to work for 15 minutes.
- Repeat if necessary.
- If you are using citric acid, always dilute it with water.
- **Whatever method you use, always empty your kettle and rinse it 5 or 6 times.**
- Before using again, rinse with cold water then boil (max level) and discard the water twice without drinking it.

In the event of a problem

- Check:
 - . the connection.
 - . that the kettle is correctly positioned on its base.
 - . that the switch is in the "on" position by pressing "I".

. that the lid is locked in the "lock" position and that the protective cover is blocking off the spout

. that the kettle has not been used without water. In this case:

take the kettle off its base, fill the appliance with cold water, then try again.

- If your appliance only works intermittently or stops before reaching boiling point it may be due to a build up of scale please refer to De-scaling.

If your appliance is still not working,

contact a KRUPS approved service centre (see list in the "KRUPS Service" booklet).

Prevention of domestic accidents

- Unplug the appliance when you are not using it and when you clean it.
- Take care if carrying the kettle when it contains hot water.
- Tilt and pour slowly in order to prevent any risk of burning with hot water.
- Keep your hands away from the pouring spout when the water is coming to the boil, and avoid any contact with the hot surfaces of the appliance.