



# DISHDRAWER®

## Installation Guide



**MODELS:**  
DD124P5  
DD224P5



## Safety and warnings

### ⚠ WARNING!



#### Electrical hazard

Before installing the DishDrawer®, remove the house fuse or open the circuit breaker.

If permanently connecting the DishDrawer®, be sure the power is isolated and the DishDrawer® unplugged.

This appliance must be grounded. In the event of a malfunction or breakdown, grounding will reduce the risk of electric shock by providing a path of least resistance for electric current. This appliance is equipped with a cord having an equipment-grounding conductor and a grounding plug. The plug must be plugged into an appropriate outlet that is installed and grounded in accordance with all local codes and ordinances. Improper connection of the equipment-grounding conductor can result in a risk of electric shock. Check with a qualified electrician or service representative if you are in doubt as to whether the appliance is properly grounded.

Do not modify the power supply plug provided with the appliance - if it will not fit the outlet, have a proper outlet installed by a qualified electrician. Do not use an extension cord, adapter plug or multiple outlet box.

Failure to do so may result in electrical shock or death.

### ⚠ WARNING!



#### Cut Hazard

Take care - panel edges are sharp.

Failure to use caution could result in injury or cuts.

### **Important safety precautions!**

- *Installation of this DishDrawer® requires basic mechanical and electrical skills.*
- *Be sure to leave these Instructions with the Customer.*
- *Installation must comply with your local building and electricity regulations.*
- *At the completion of the DishDrawer® installation, the Installer must perform Final Check List on Page 29.*
- *Remove all packaging materials supplied with the DishDrawer®.*
- *This dishwasher is manufactured for indoor use only.*
- *Ensure all water connections are turned OFF. It is the responsibility of the plumber and electrician to ensure that each installation complies with all Codes and Regulations.*
- *The DishDrawer® MUST be installed to allow for future removal from the enclosure if service is required.*
- *The switched power outlet must be outside the DishDrawer® cavity so that it is accessible after installation.*
- *Care should be taken when the appliance is installed or removed to reduce the likelihood of damage to the power supply cord.*
- *If the DishDrawer® is to be relocated from one installation to another it must be kept upright to avoid damage from water spillage.*
- *Make sure only new hoses are used for connection (supplied with DishDrawer®). Old hoses should not be reused.*
- *Failure to install the DishDrawer® correctly could invalidate any warranty or liability claims.*
- *If the product is installed in a motor vehicle, boat or similar mobile facility, you must bring the vehicle, boat or mobile facility containing the product to the service shop at your expense or pay the service technician's travel to the location of the product.*

## DOUBLE MODELS

Product and cabinetry dimensions	2
Installation	
Cavity preparation	4
Optionally hard wiring the product	5
Route the hoses and move into the cavity	6
Removing the tub and levelling the product	7
Securing the product and refitting the tub	8
Fitting the toekick	9
Plumbing and drainage - OPTION 1	10
Plumbing and drainage - OPTION 1 (connection)	11
Plumbing and drainage - OPTION 2	12
Plumbing and drainage - OPTION 2 (connection)	13
Plumbing and drainage - OPTION 3	14
Plumbing and drainage - OPTION 3 (connection)	15

## SINGLE MODELS

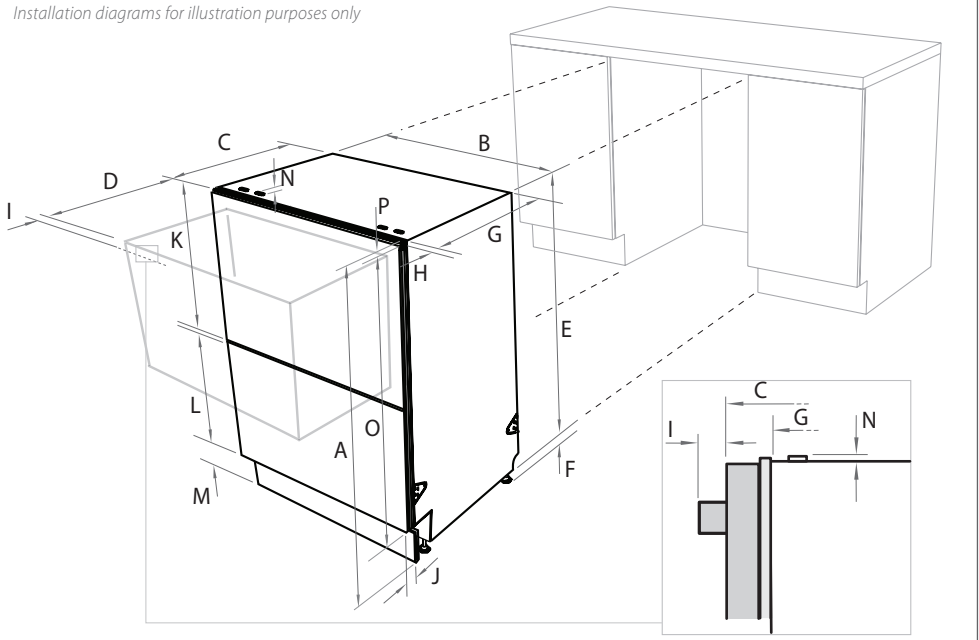
Product and cabinetry dimensions	16
Installation	
Cavity preparation	18
Optionally hard wiring the product	19
Route the hoses and move into the cavity	20
Removing the tub and securing the product	21
Plumbing and drainage - OPTION 1	22
Plumbing and drainage - OPTION 1 (connection)	23
Plumbing and drainage - OPTION 2	24
Plumbing and drainage - OPTION 2 (connection)	25
Plumbing and drainage - OPTION 3	26
Plumbing and drainage - OPTION 3 (connection)	27
Refitting the tub	28
Final checklist	29

### ***Important!***

#### **SAVE THESE INSTRUCTIONS**

*The models shown in this User Guide may not be available in all markets and are subject to change at any time. For current details about model and specification availability in your country, please go to our website [www.dcsappliances.com](http://www.dcsappliances.com) or contact your local DCS Customer Care Representative.*

Installation diagrams for illustration purposes only



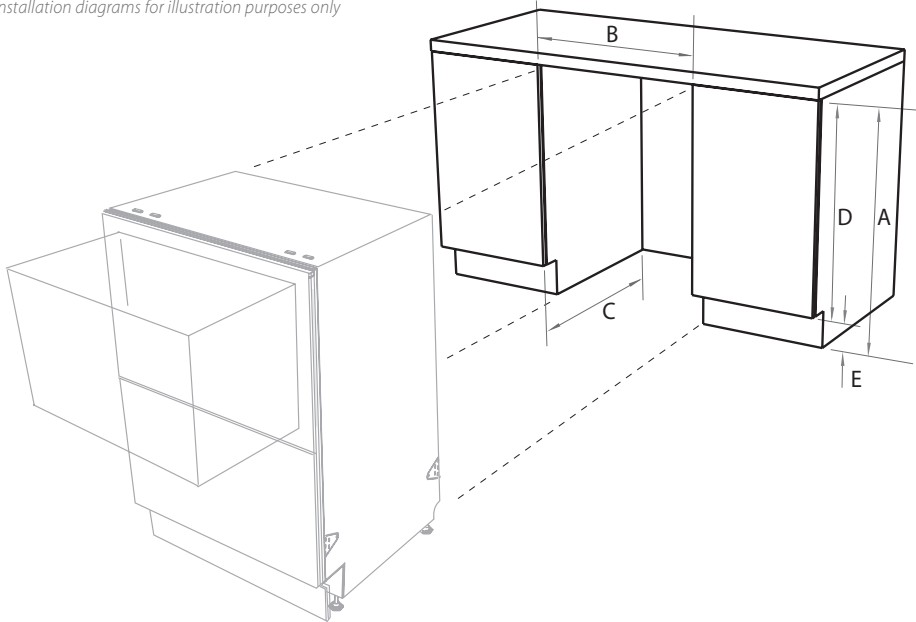
Product dimensions (inches (mm))

Prefinished  
Flat door  
DD224P5

A	overall height* of product	32 1/4 - 34 5/8" (819.5- 879.5)
B	overall width of product	23 13/16" (605)
C	overall depth of product (excl. curvature/handle)	22 8/16" (570)
D	depth of drawer (open) (excl. curvature/handle)	20 8/16" (520)
E	height* of chassis	31 7/8" (809)
F	height range of levelling feet	2 3/8" (60)
G	depth of chassis	21 3/4" (552)
H	depth of drawer front panel (excl. curvature/handle)	1" (25)
I	depth of handle	3 3/16" (81)
J	depth of kickstrip	2 - 4 5/16" (50 - 110)
K	height of upper drawer front	15 11/16" (398)
L	height of lower drawer front	14" (356)
M	height of kickstrip (adjustable)	2 3/4 - 4 3/4" (70 - 120)
N	height of installation tab slots (on top of chassis)	3/4" (2)
O	height of drawer fronts	30 1/16" (764)
P	height* of top of upper drawer to top of chassis	3/4" (2)

\* Chassis heights include tab slots

Installation diagrams for illustration purposes only

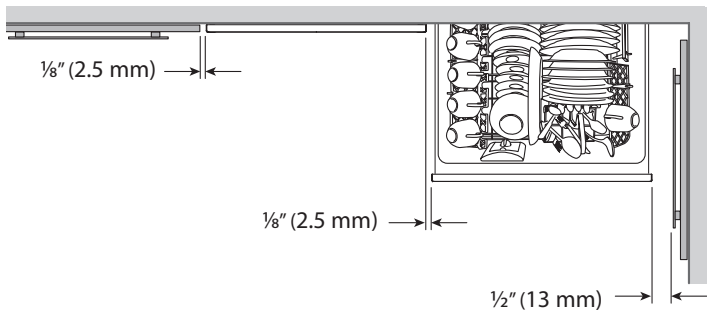


## Cabinetry dimensions (inches (mm))

Prefinished  
Flat door  
DD224P5

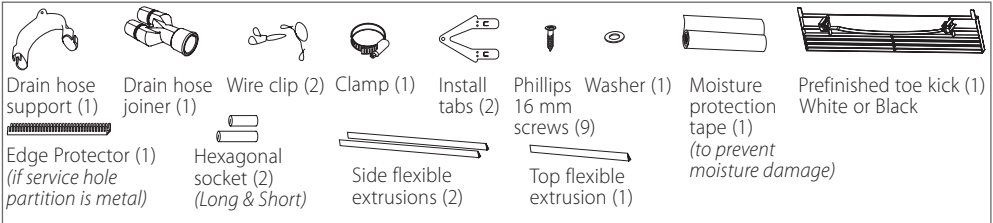
A	inside height of cavity	32 <sup>5</sup> / <sub>16</sub> - 34 <sup>3</sup> / <sub>4</sub> " (820 - 882.5)
B	inside width of cavity	24" (610)
C	inside depth of cavity (inside)	22 <sup>7</sup> / <sub>8</sub> " (580)
D	height of adjacent cabinetry	28 <sup>3</sup> / <sub>8</sub> " (720)
E	height of kickstrip	2 <sup>3</sup> / <sub>4</sub> - 4 <sup>3</sup> / <sub>4</sub> " (70 - 120)

## Minimum clearances (inches (mm))

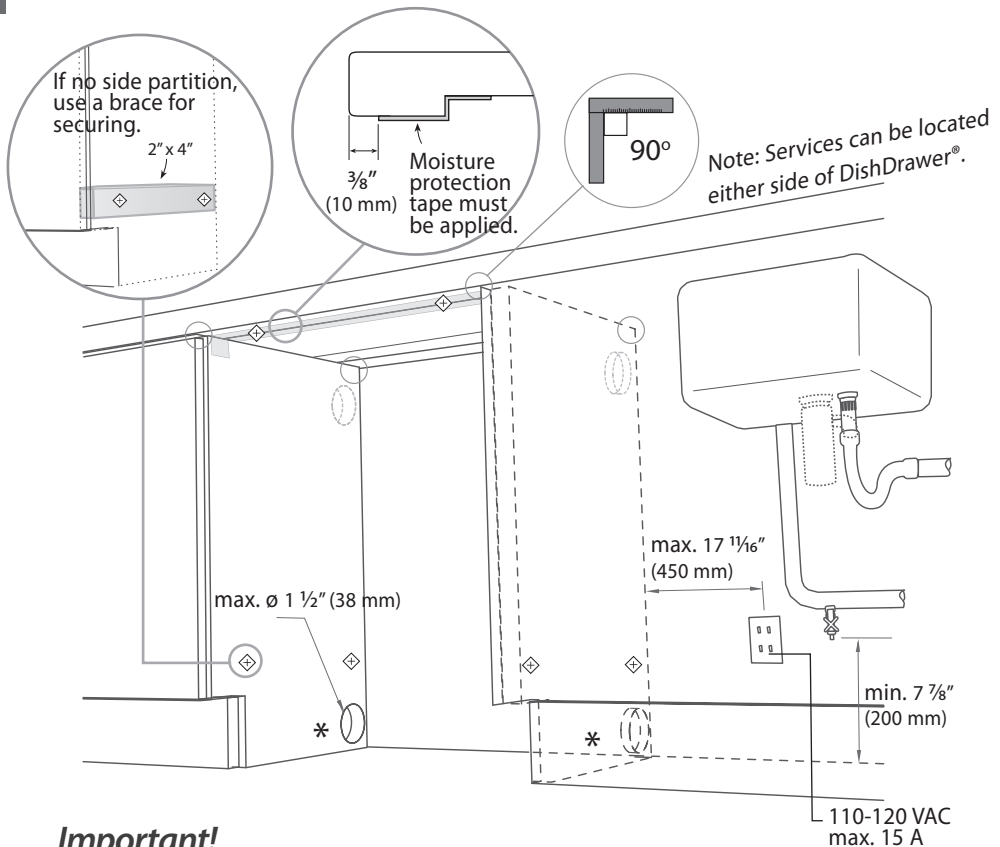


# Cavity preparation

## Parts supplied



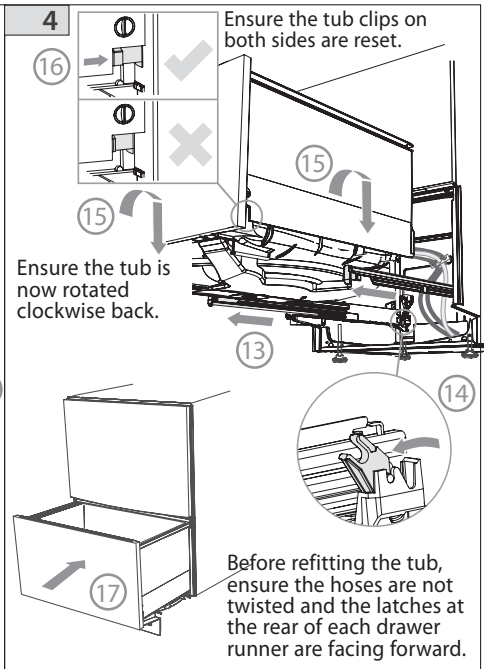
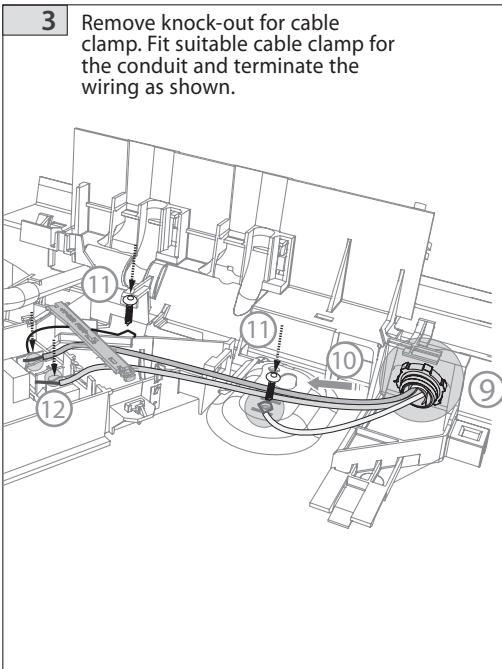
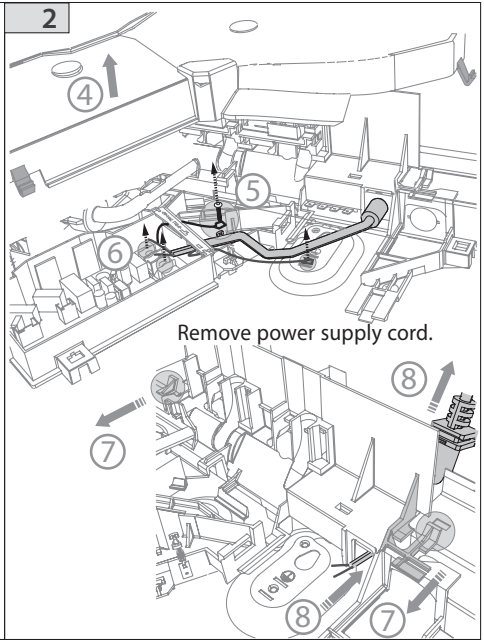
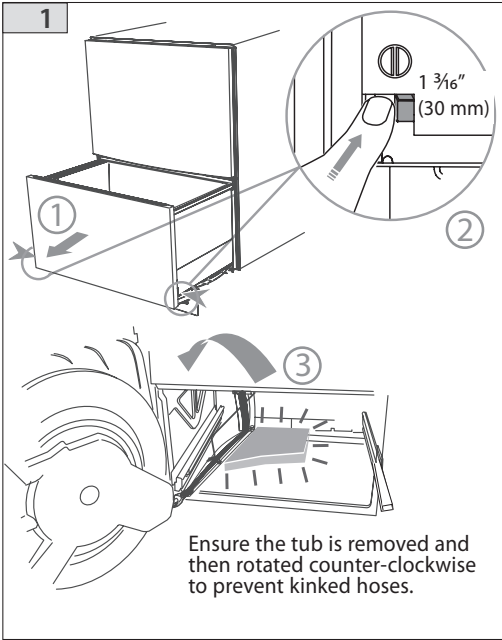
If the Drain hose(s) supplied are not long enough to reach your services, you **must** use a Drain Hose Extension Kit P/N 525798 which will extend the drain hose(s) by 3.6m. The kit is available from the nearest DCS Authorized Service Agent, or by phone: 1-888-281-5698, or [www.dcsappliances.com](http://www.dcsappliances.com). DO NOT extend beyond this limit.



## Important!

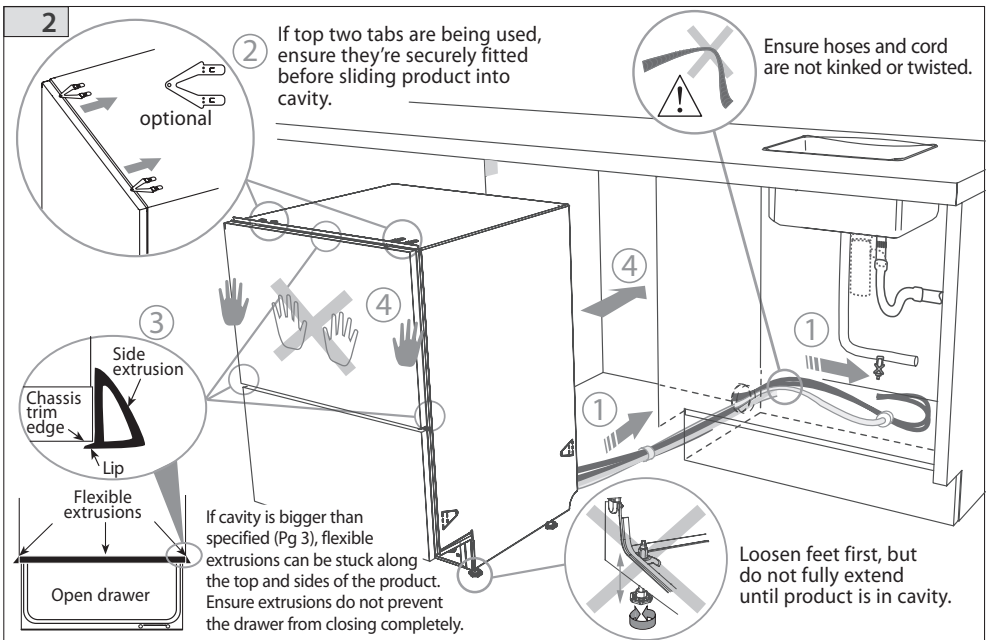
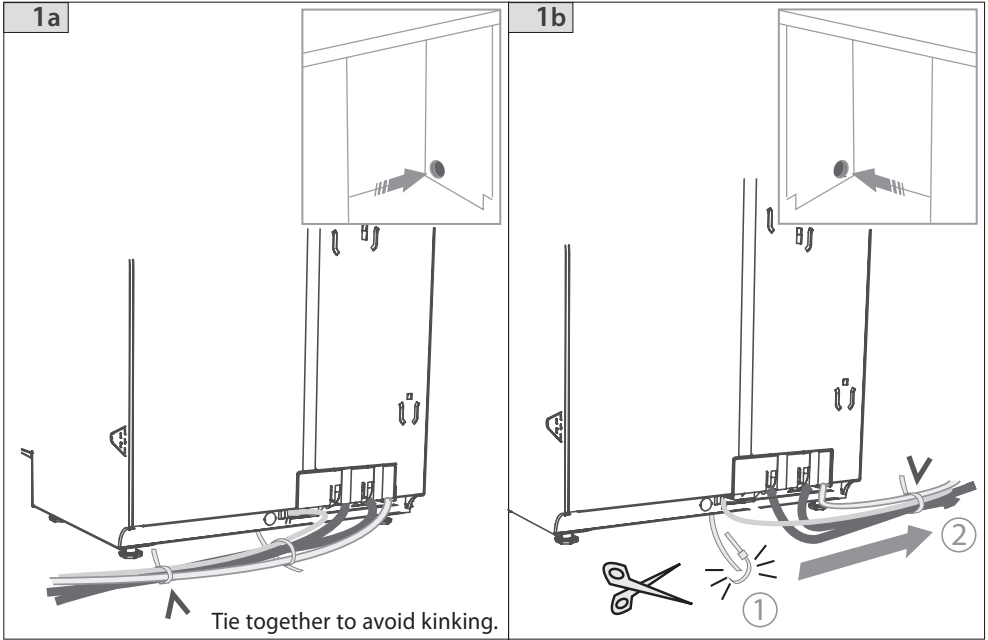
*Be sure the edges of the services hole are smooth or covered. If the service hole is through a metal partition the hole must be protected with the Edge Protector supplied to prevent damage to the power cord or hoses.*

- ◆ These marks indicate mounting tab screw locations
- \* Preferred position. If adequate clearance, services hole can be higher to clear toe kick space. If hole is higher, ensure drain hose(s) are routed straight into the waste connection.

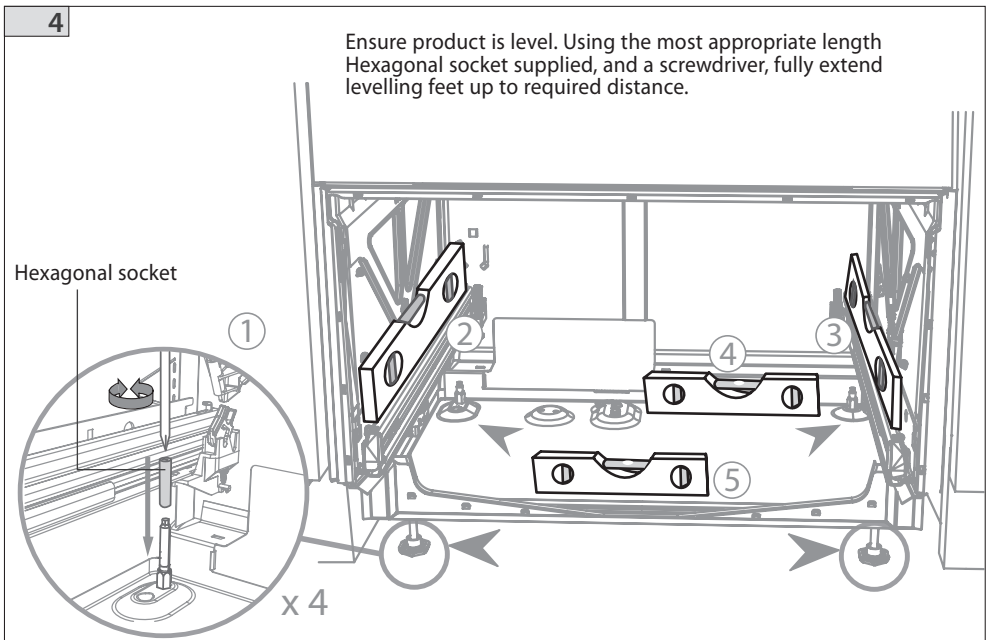
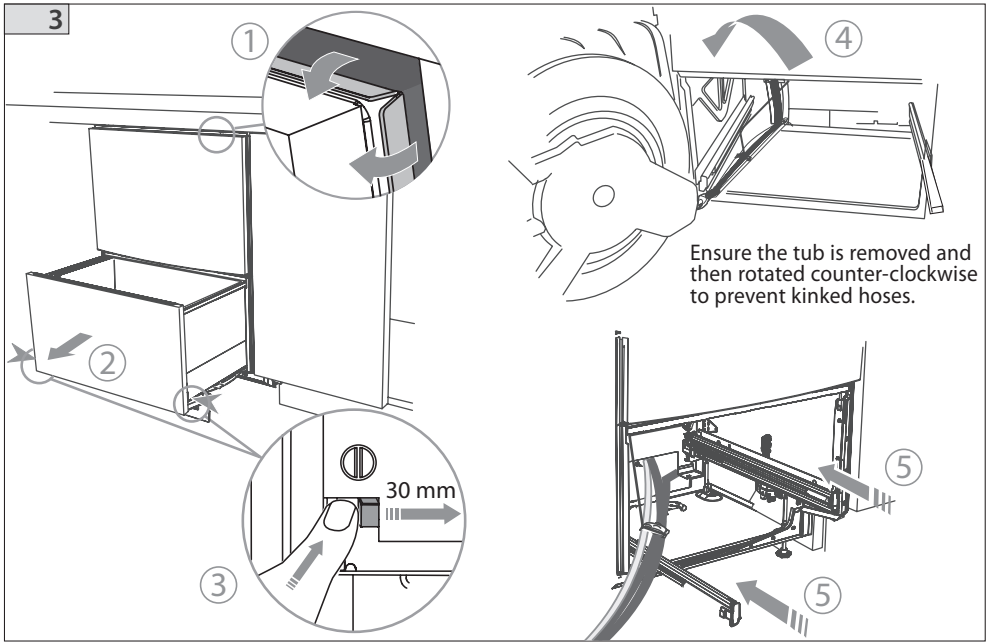


# Route the hoses and move into the cavity

DOUBLE MODELS







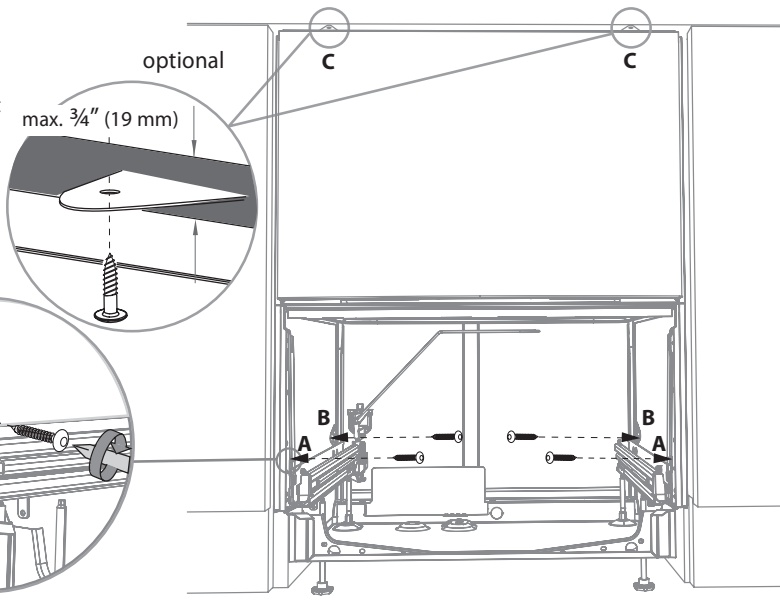
# Securing the product and refitting the tub

5

The mounting tabs are in pairs, one on each side of the product. At least two sets of tab pairs must be used.

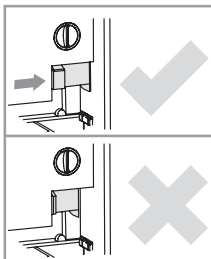
**A** and **B** tab pairs  
OR **B** and **C** tab pairs  
or all three pairs.

Ensure the sound insulation is repositioned correctly.



6

5 Ensure the tub clips on both sides are reset.



5

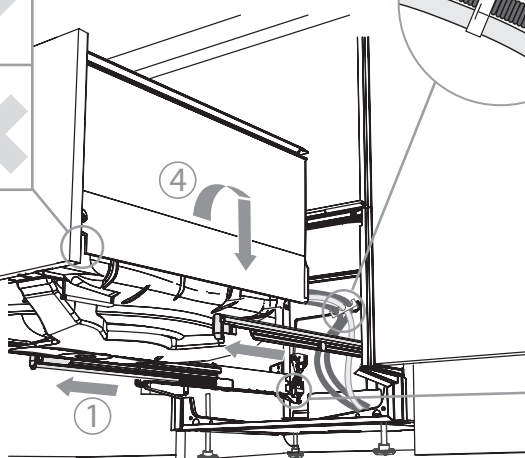
4

4

4

Ensure the tub is now rotated clockwise back.

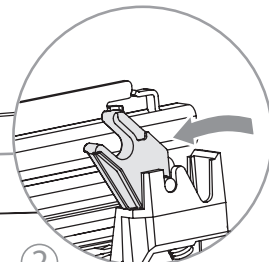
1



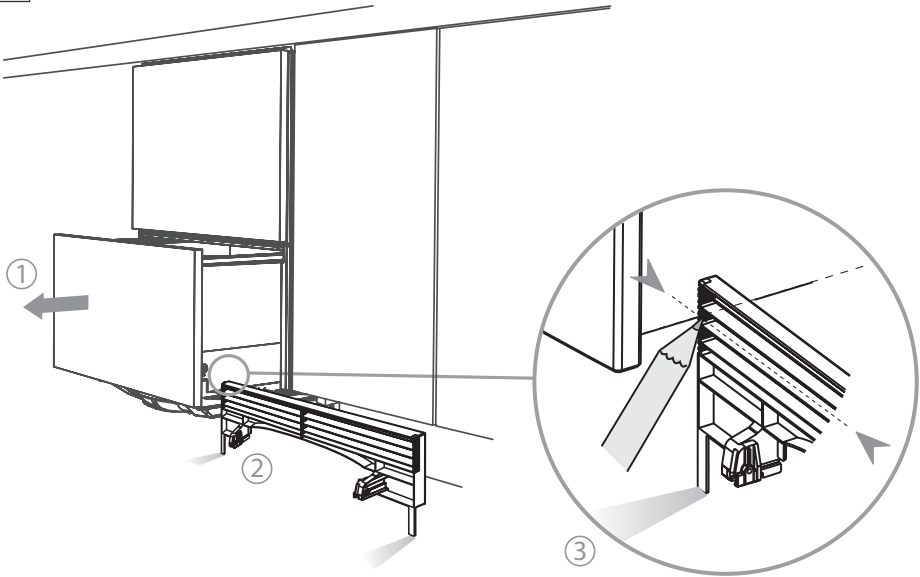
3

Before refitting the tub, ensure the hoses are not twisted and the latches at the rear of each drawer runner are facing forward.

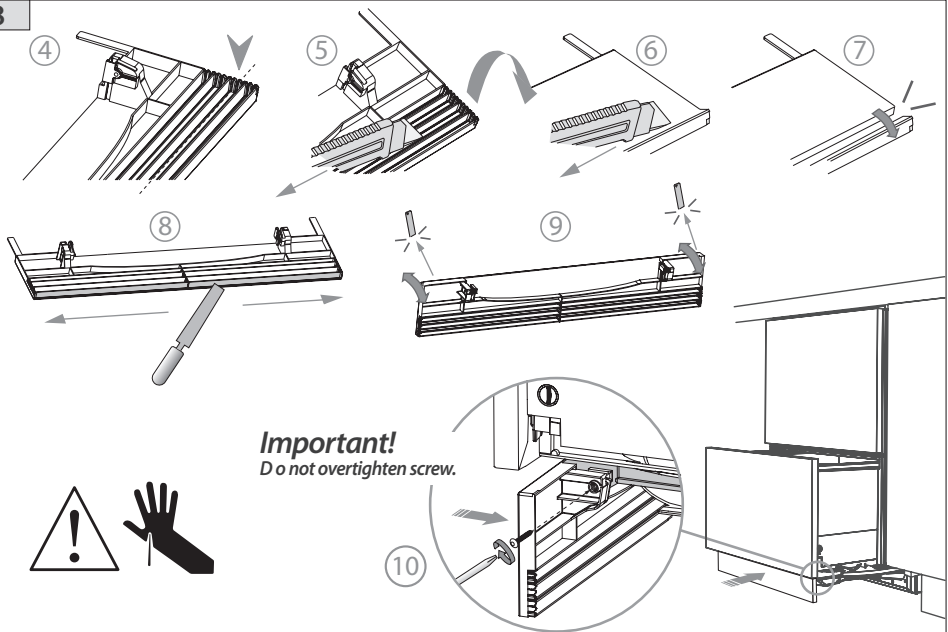
2



7

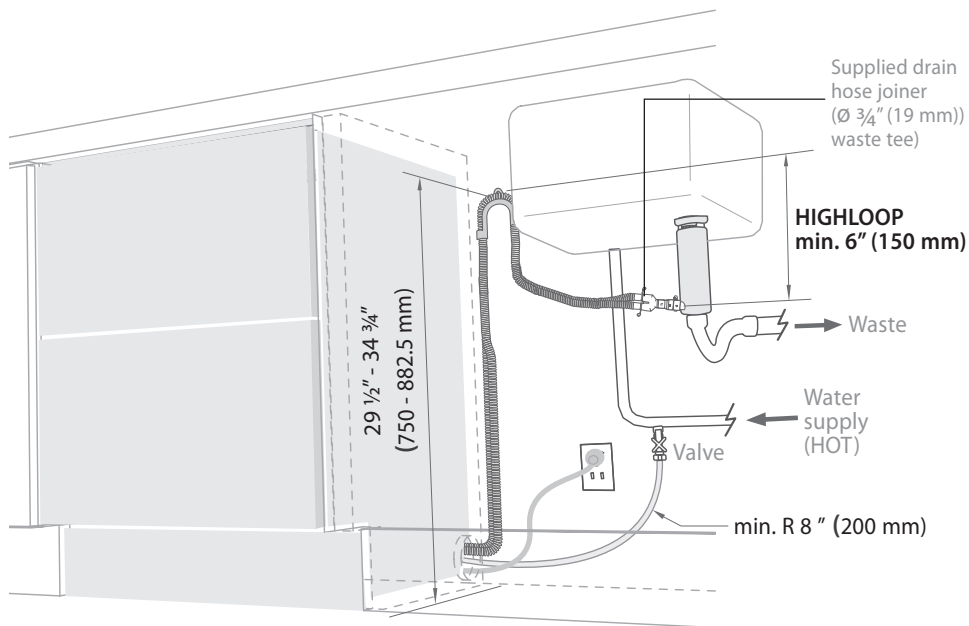


8

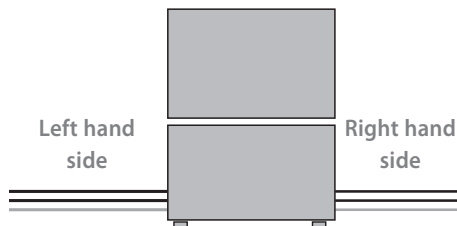


## DishDrawer® with Waste Disposal

DOUBLE MODELS

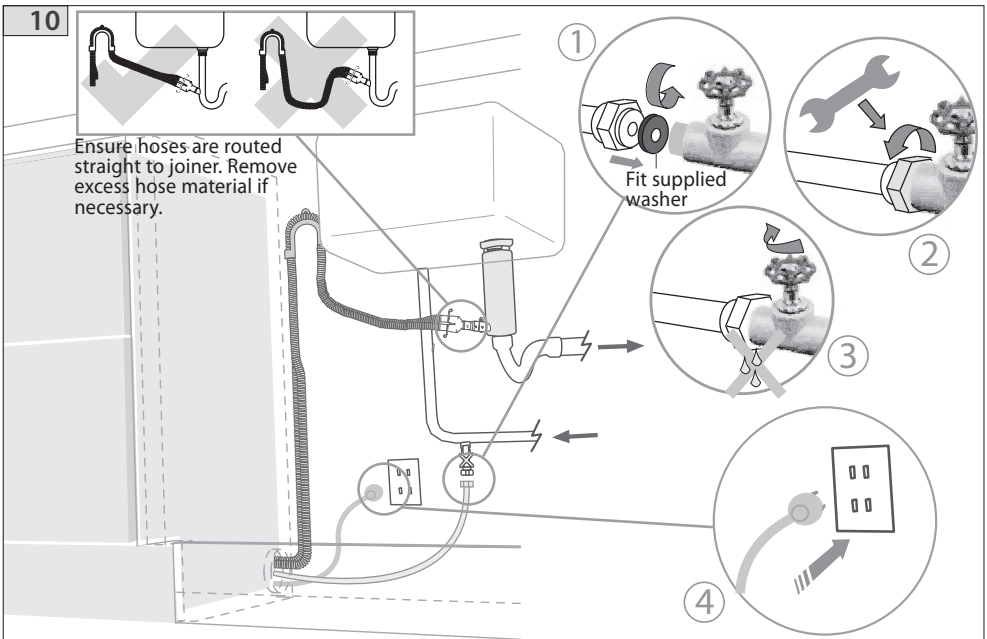
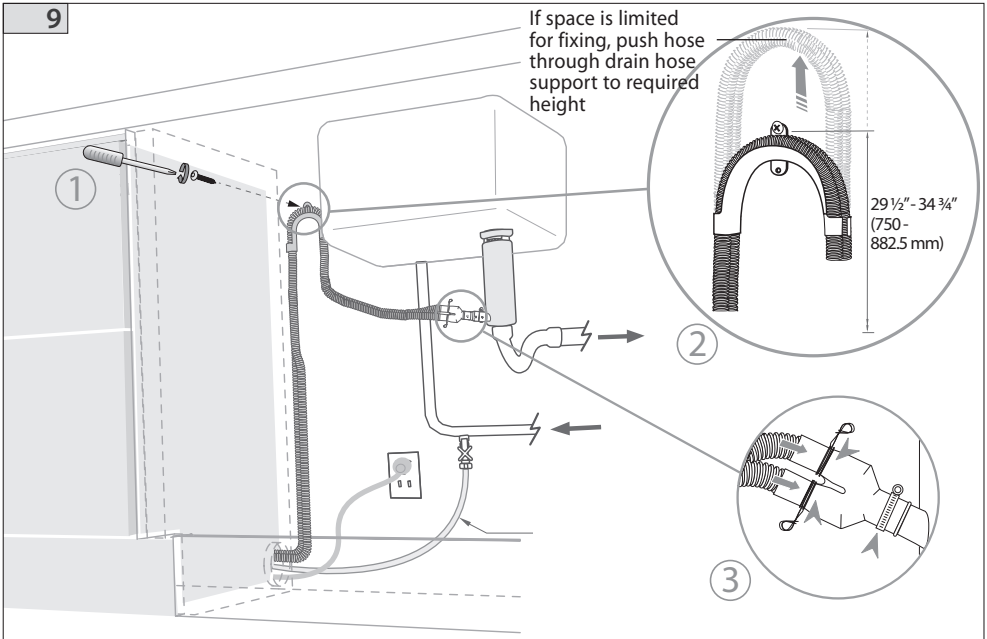


Max. distance of hoses and cord from chassis edge	Left hand side	Right hand side
<i>Drain hose</i>	79" (2011 mm)	71" (1794 mm)
<i>Inlet hose</i>	61" (1561 mm)	53" (1344 mm)
<i>Power cord</i>	70" (1776 mm)	61" (1559 mm)



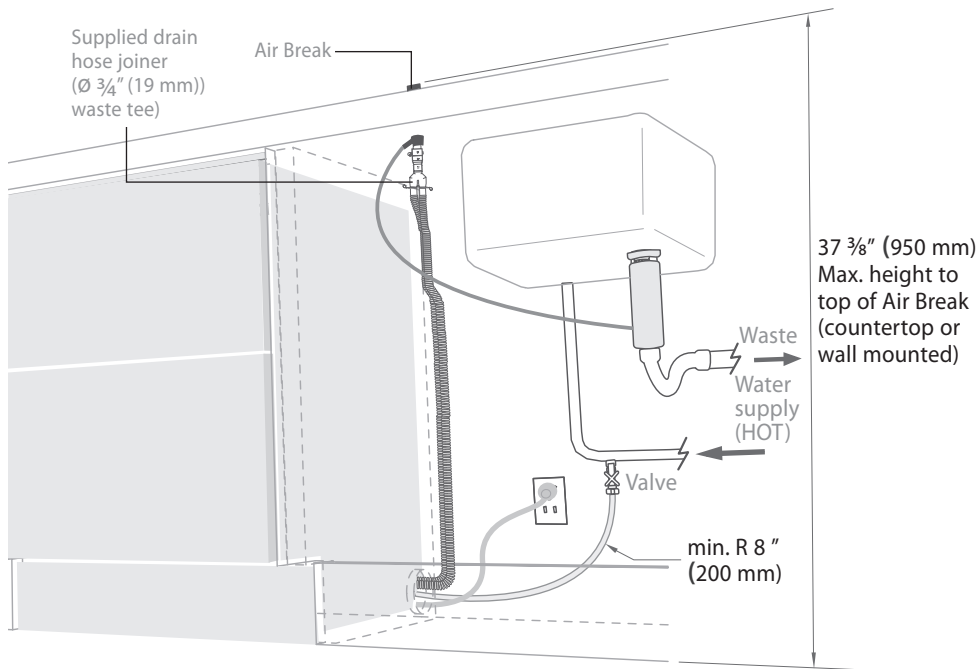
- |                       |                 |                    |
|-----------------------|-----------------|--------------------|
| <b>Water Pressure</b> | <b>Max</b>      | <b>Min</b>         |
| Water softener models | 1 MPa (145 psi) | 0.1 MPa (14.5 psi) |
| Other models          | 1 MPa (145 psi) | 0.03 MPa (4.3 psi) |
- Drains will need to be separated to satisfy Kosher requirements. We suggest you confirm acceptability with your local Rabbi in respect to Kosher installations.

## DishDrawer® with Waste Disposal

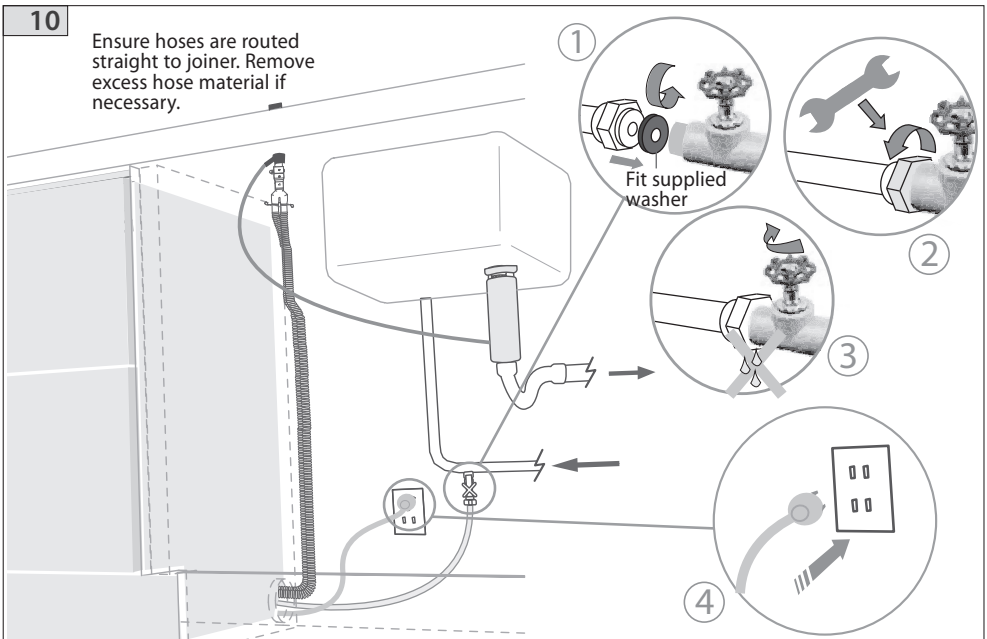
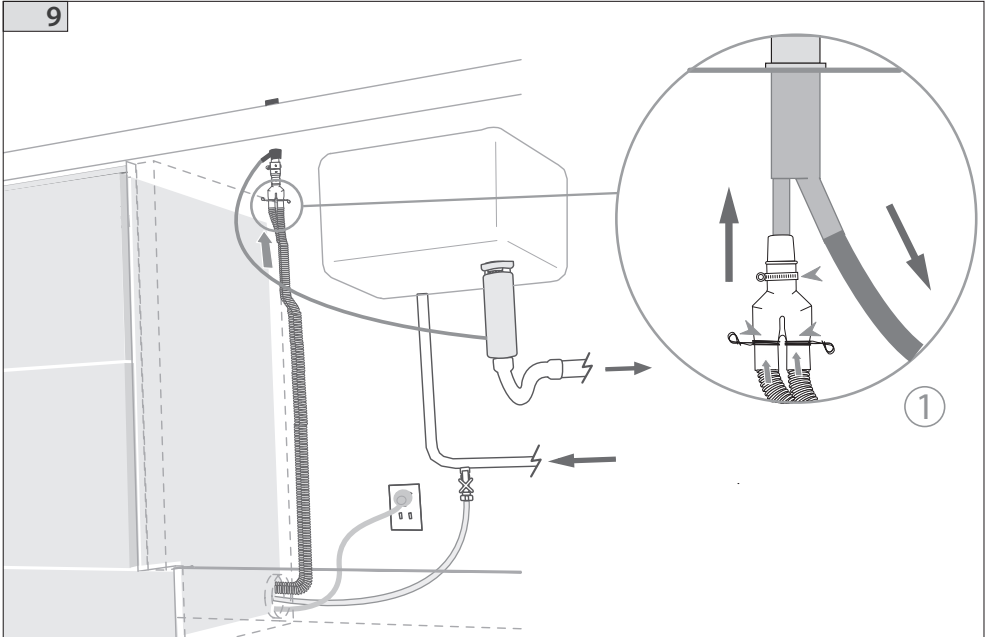


## DishDrawer® using Air Break with Drain Hose Joiner

DOUBLE MODELS



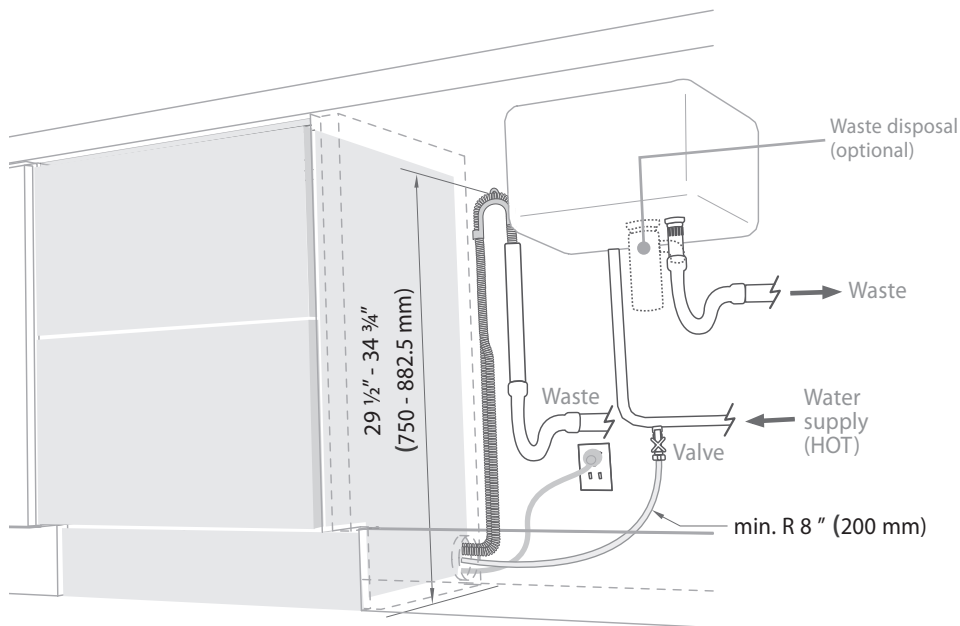
## DishDrawer® using Air Break with Drain Hose Joiner



# Plumbing and drainage - OPTION 3

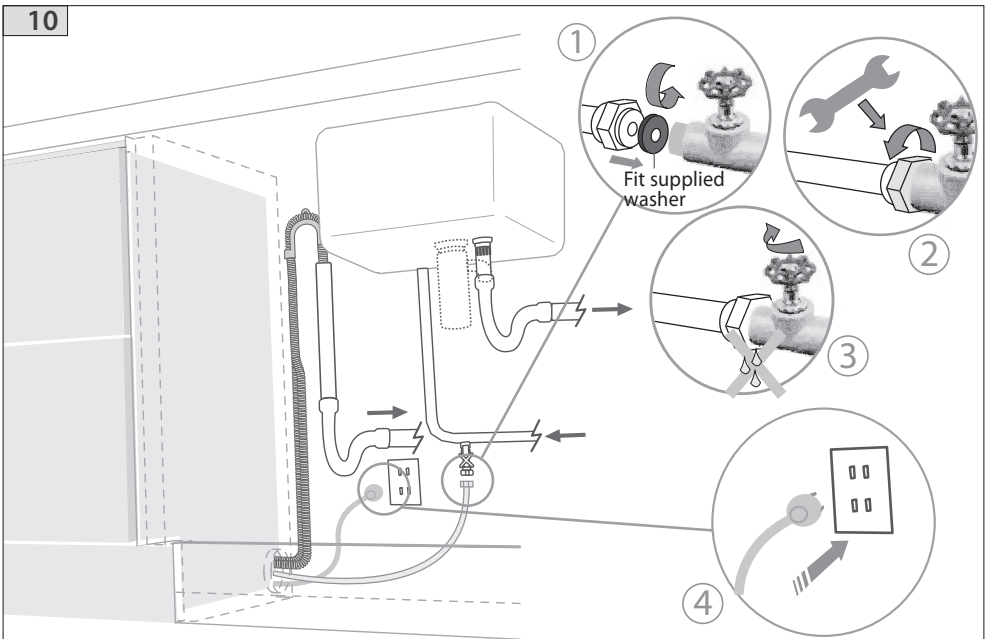
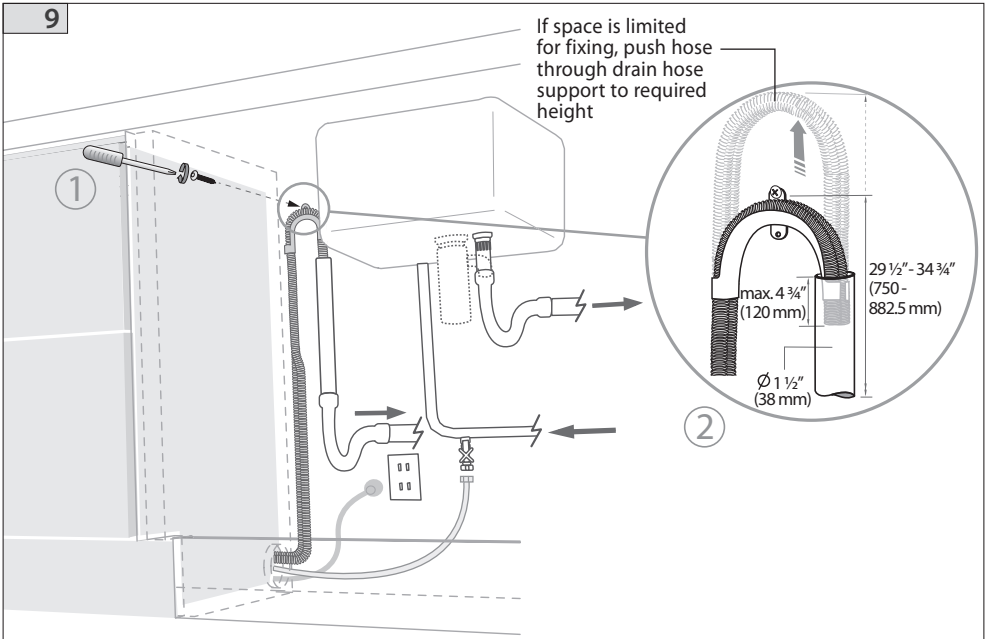
## DishDrawer® and Standpipe $\varnothing 1 \frac{1}{2}$ " (38 mm)

DOUBLE MODELS

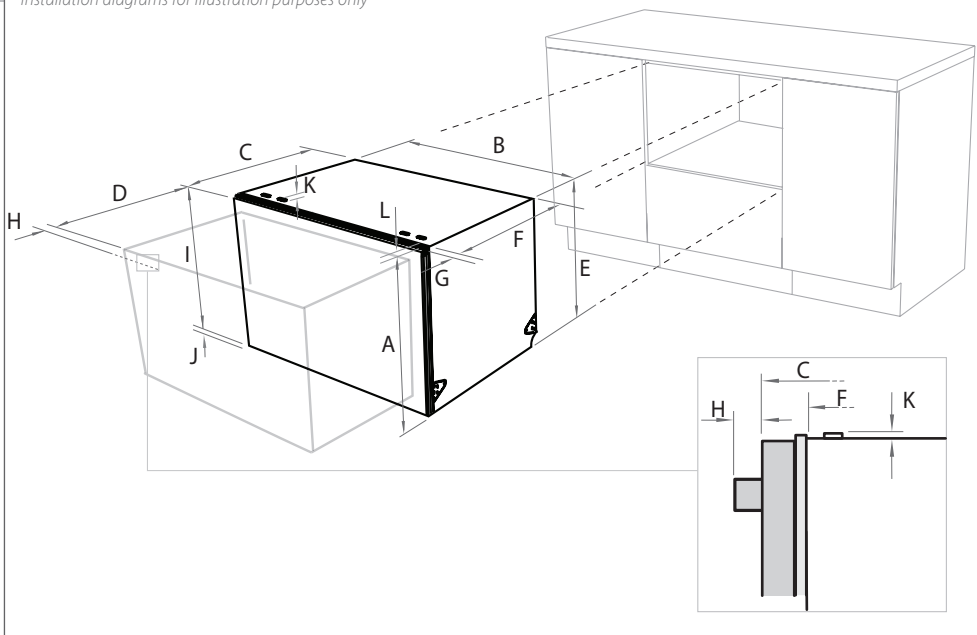




## DishDrawer® and Standpipe $\varnothing$ 1 1/2" (38 mm)



Installation diagrams for illustration purposes only



### Product dimensions (inches (mm))

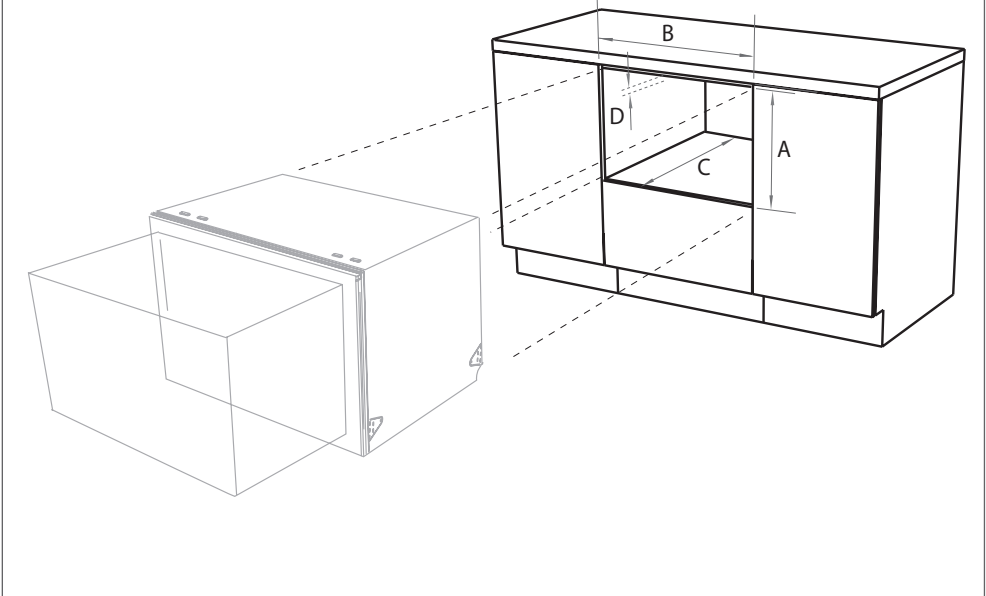
Prefinished  
Flat door  
DD124PS

A	overall height* of product	16 1/8" (409)
B	overall width of product	23 13/16" (605)
C	overall depth of product (excl. curvature/handle)	22 7/16" (570)
D	depth of drawer (open) (excl. curvature/handle)	20 1/2" (520)
E	height* of chassis	16 1/8" (409)
F	depth of chassis	21 3/4" (552)
G	depth of drawer front panel (excl. curvature/handle)	1" (25)
H	depth of handle	3 3/16" (81)
I	height of drawer front	15 11/16" (398)
J	height of venting area at base of product	3/8" (9)
K	height of installation tab slots (on top of chassis)	1/16" (2)
L	height* of top of drawer to top of chassis	1/16" (2)

\*Chassis heights include tab slots

Note: for Prefinished Flat door models, the height from the top of handle to the top of door - 2 5/16" (59.5 mm)

Installation diagrams for illustration purposes only



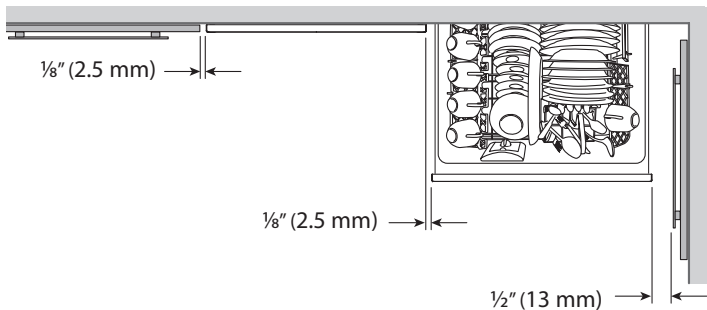
## Cabinetry dimensions (inches (mm))

Prefinished  
Flat door  
DD124PS

A	inside height of cavity	16 ¼" (412)
B	inside width of cavity	24" (610)
C	inside depth of cavity (inside)	22 ⅞" (580)
D	clearance below benchtop	Min. ⅛" (3)*

\* Clearance is measured from the underside of benchtop to the chassis

## Minimum clearances (inches (mm))

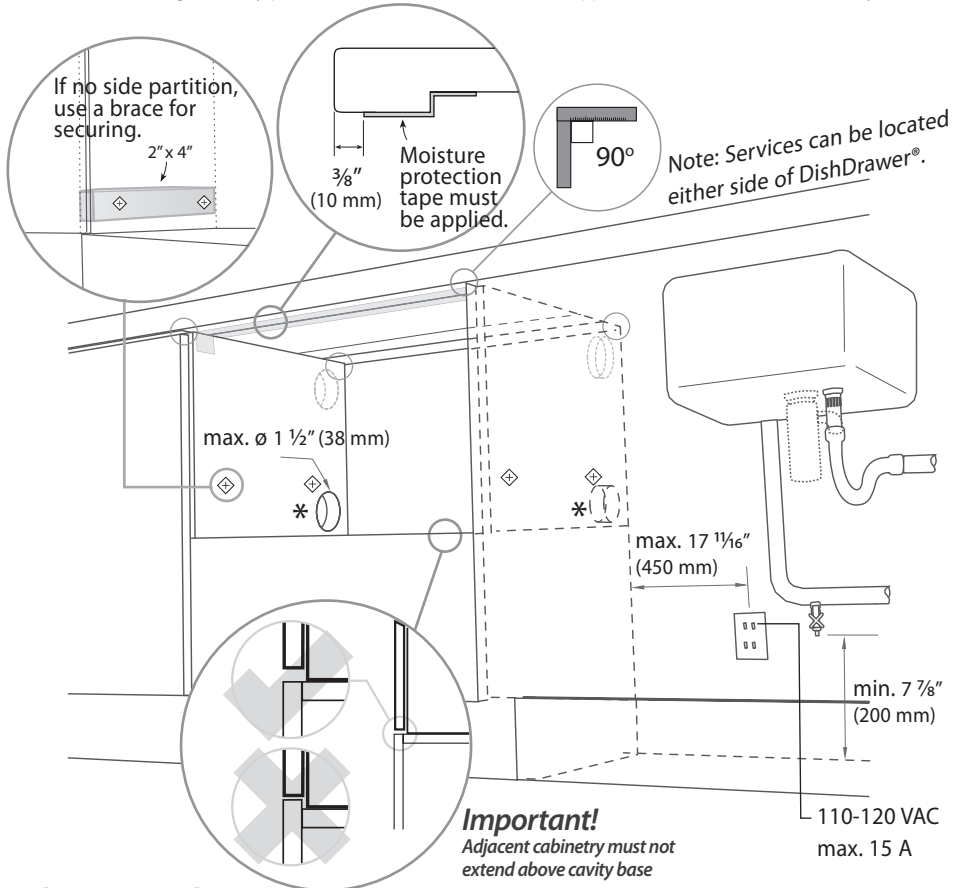


# Cavity preparation

## Cavity



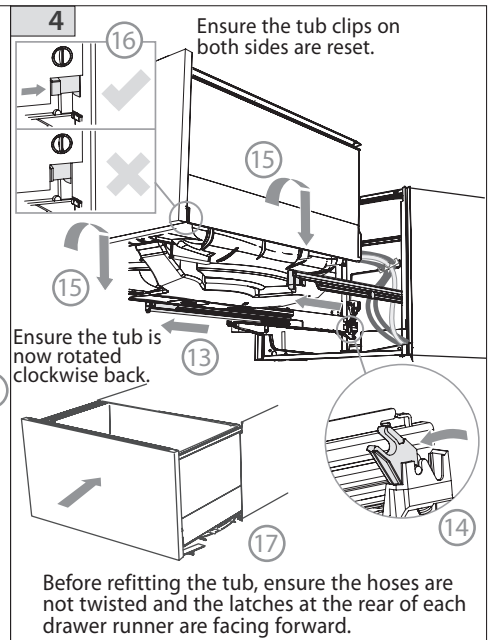
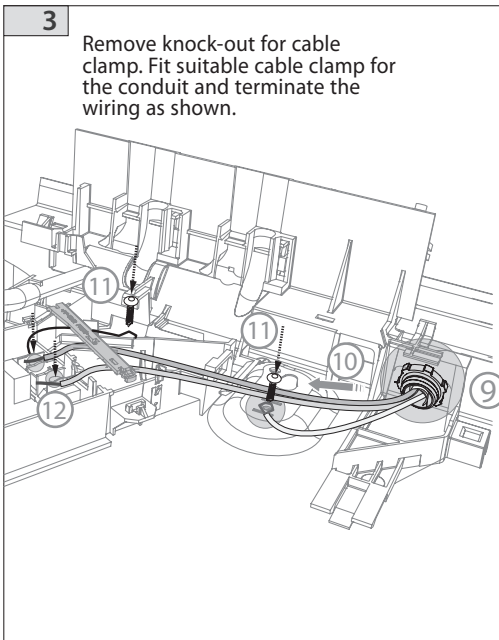
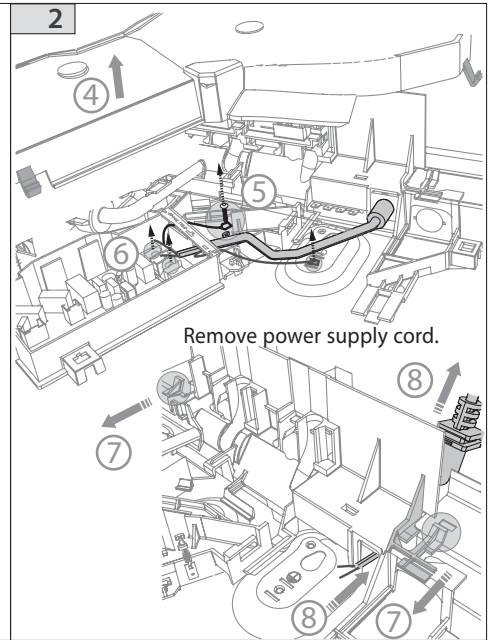
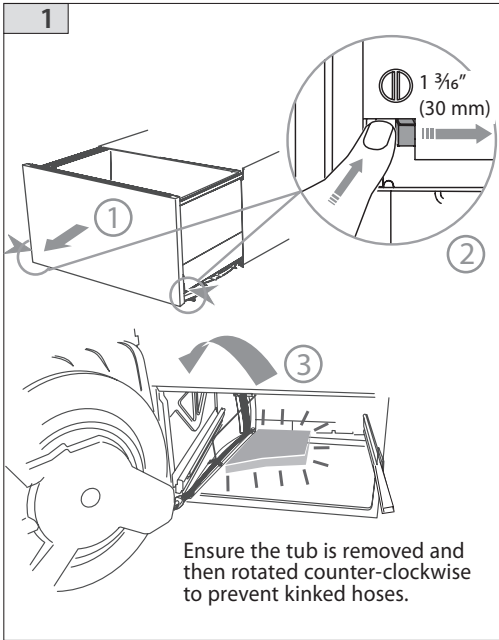
If the Drain hose(s) supplied are not long enough to reach your services, you **must** use a Drain Hose Extension Kit P/N 525798 which will extend the drain hose(s) by 3.6m. The kit is available from the nearest DCS Authorized Service Agent, or by phone: 1-888-281-5698, or [www.dcsappliances.com](http://www.dcsappliances.com). DO NOT extend beyond this limit.



### Important!

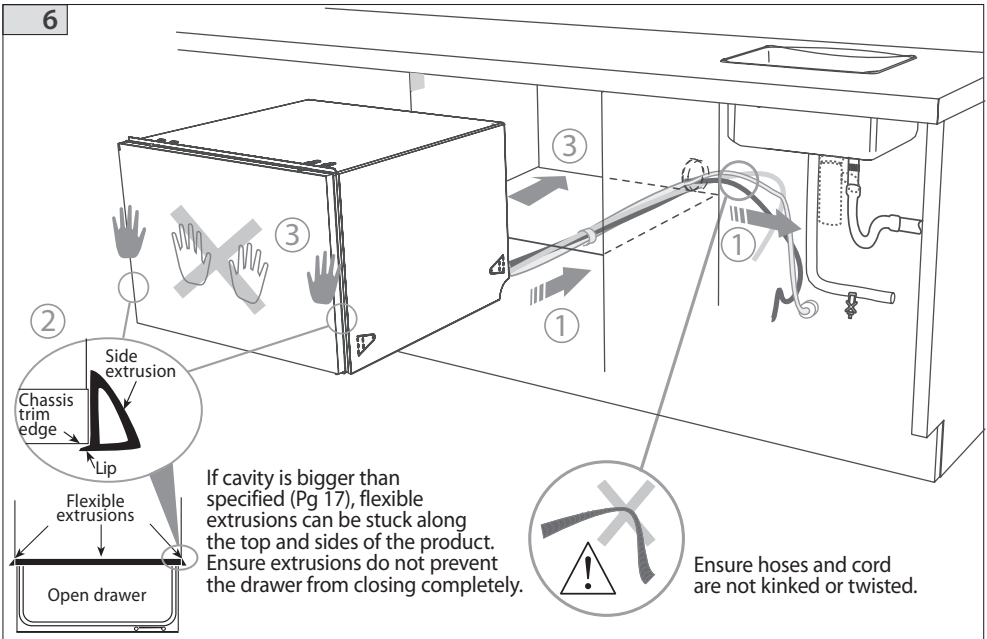
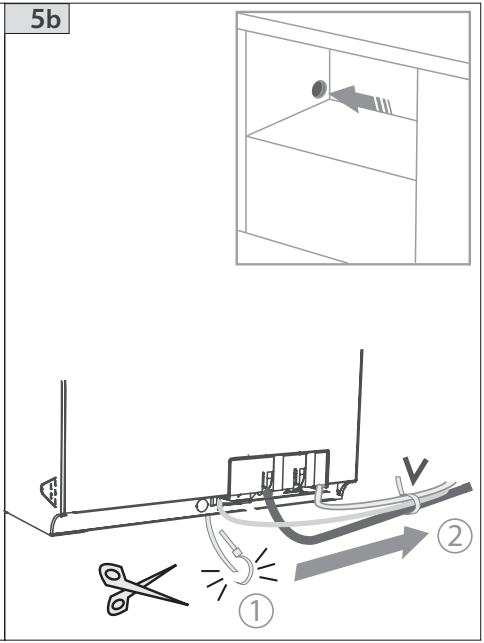
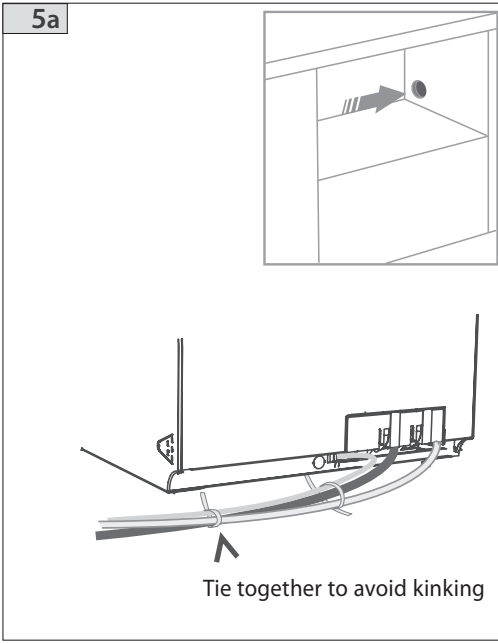
Be sure the edges of the services hole are smooth or covered. If the service hole is through a metal partition the hole must be protected with the Edge Protector supplied to prevent damage to the power cord or hoses.

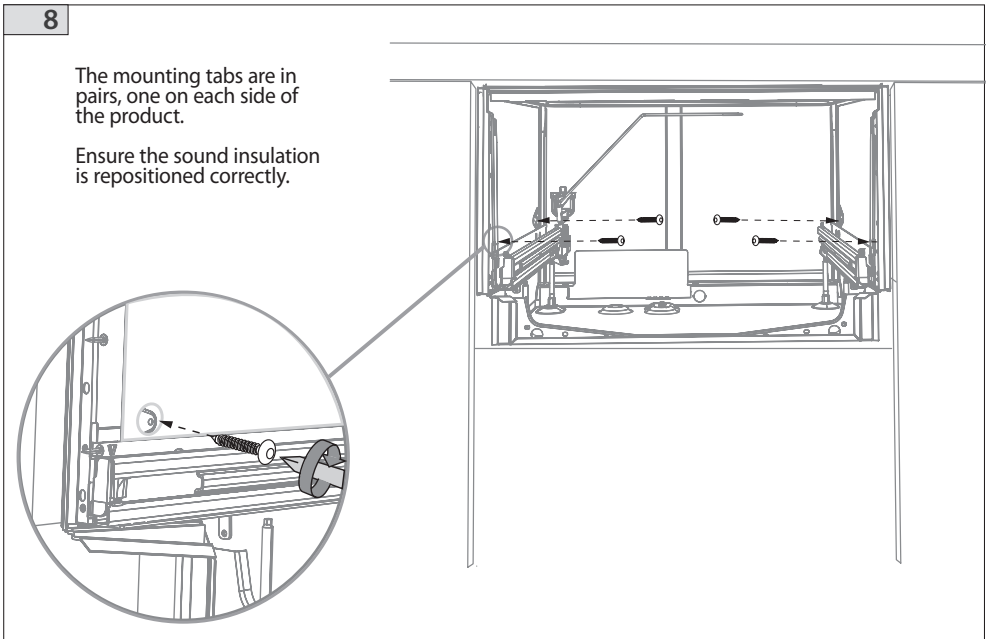
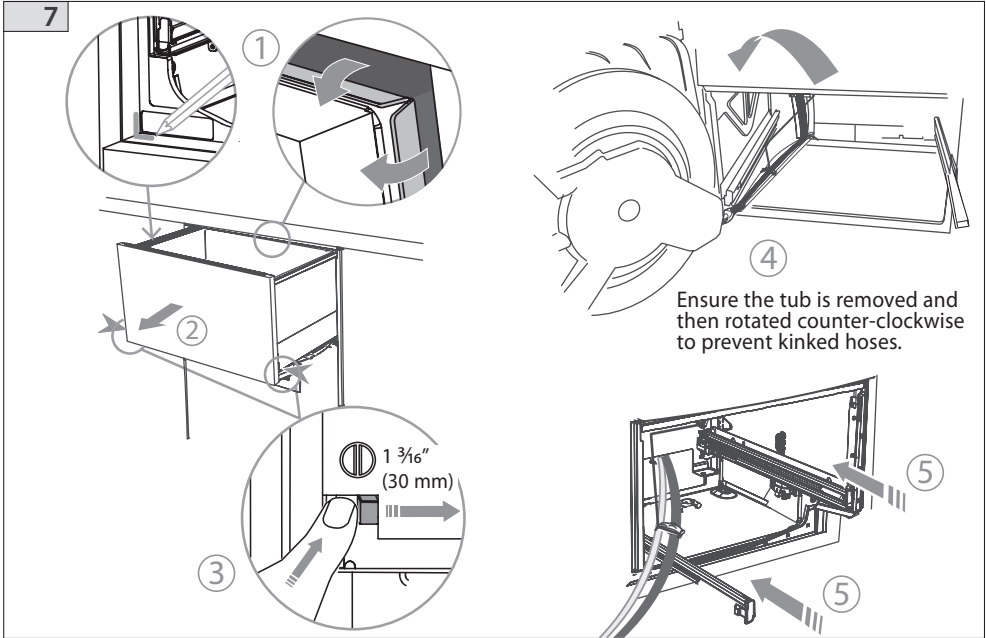
- ◆ These marks indicate mounting tab screw locations
  - Note: To align drawer front to adjacent cabinetry, the product to counter top clearance can be increased to 1/8" (3 mm).
- \* Preferred position. If adequate clearance, services hole can be higher. If hole is higher, ensure drain hose(s) are routed straight into the waste connection.



# Route the hoses and move into the cavity

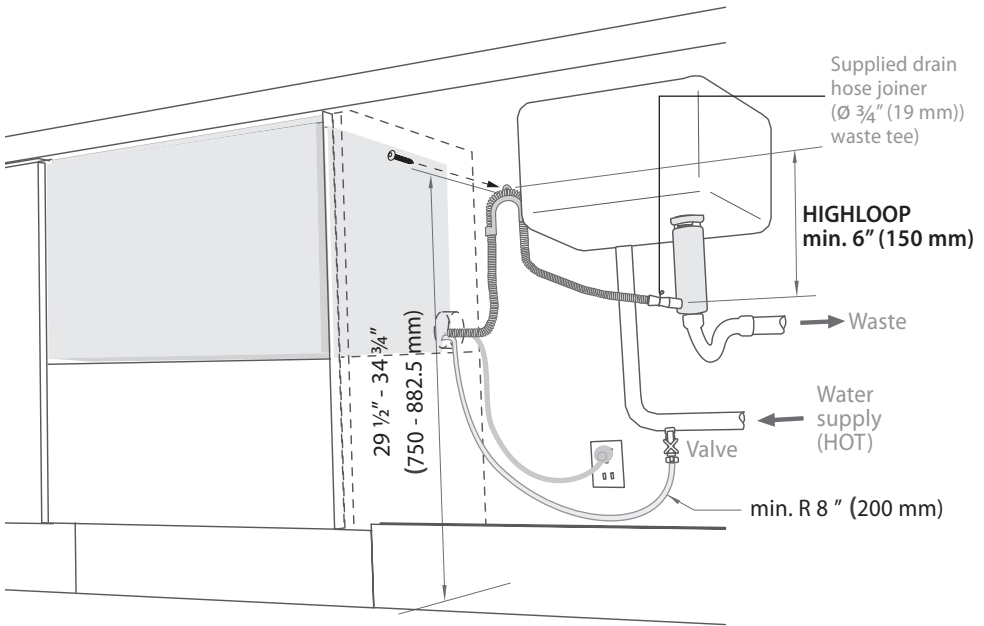
SINGLE MODELS





## DishDrawer® with Waste Disposal

SINGLE MODELS



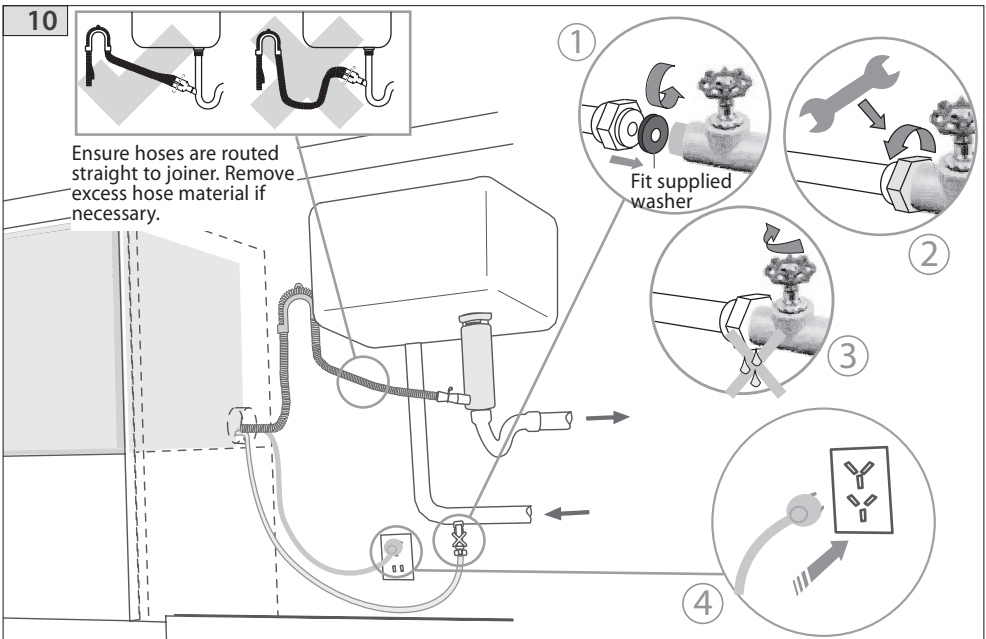
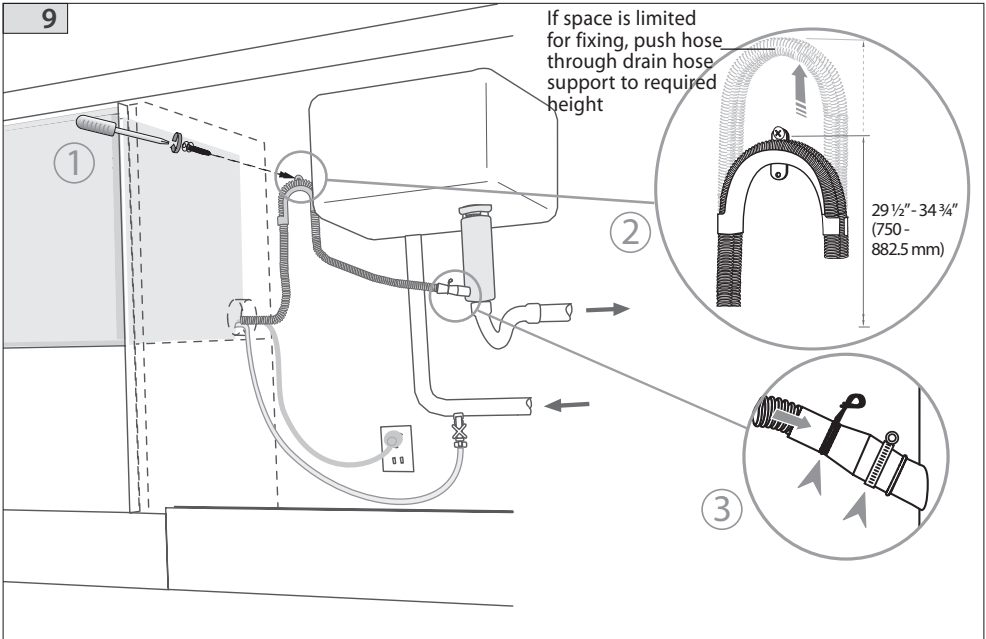
Max. distance of hoses and cord from chassis edge	Left hand side	Right hand side
Drain hose	79" (2011 mm)	71" (1794 mm)
Inlet hose	37" (1561 mm)	53" (1344 mm)
Power cord	61" (936 mm)	28" (719 mm)



- |                       |                 |                    |
|-----------------------|-----------------|--------------------|
| <b>Water Pressure</b> | <b>Max</b>      | <b>Min</b>         |
| Water softener models | 1 MPa (145 psi) | 0.1 MPa (14.5 psi) |
| Other models          | 1 MPa (145 psi) | 0.03 MPa (4.3 psi) |

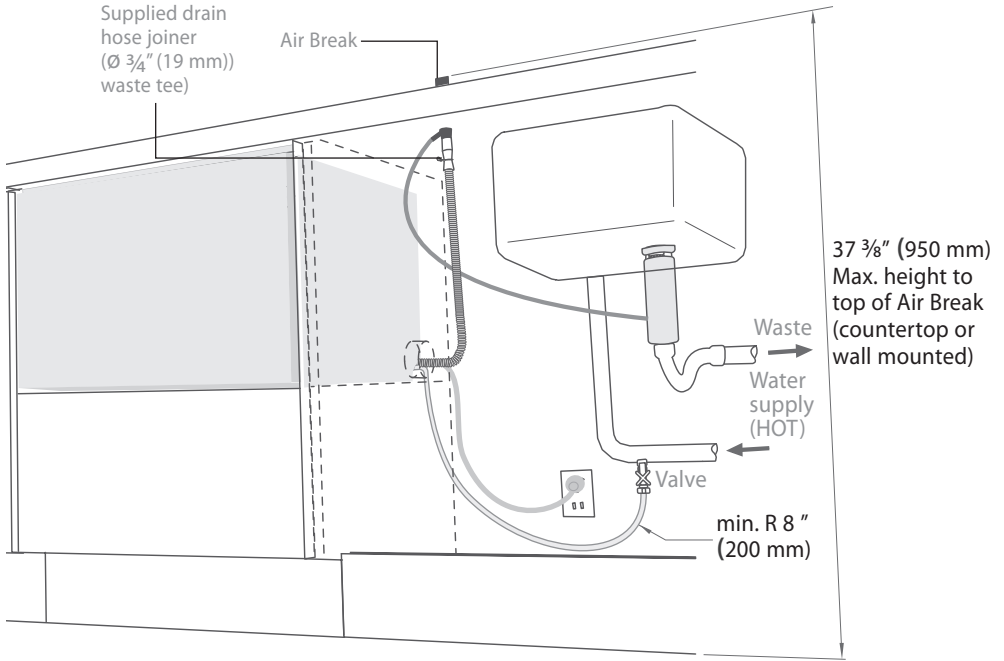


## DishDrawer® with Waste Disposal

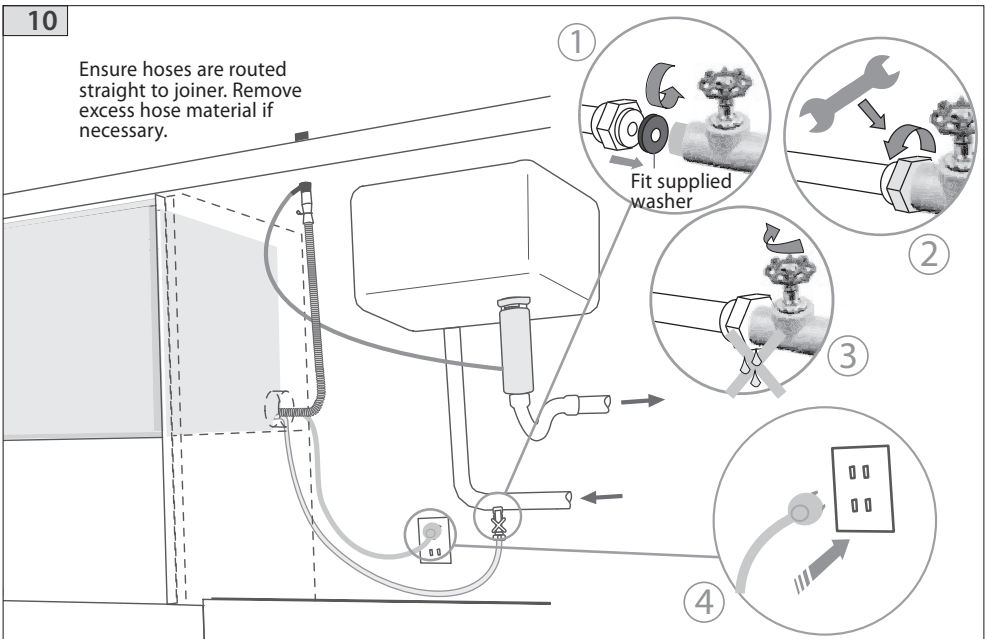
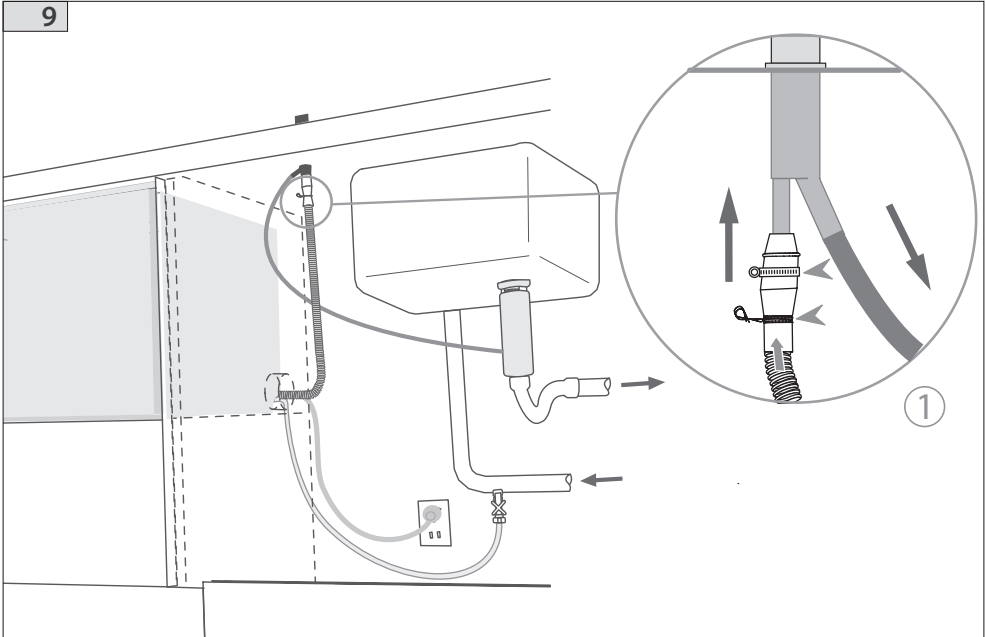


## DishDrawer® using Air Break with Drain Hose Joiner

SINGLE MODELS



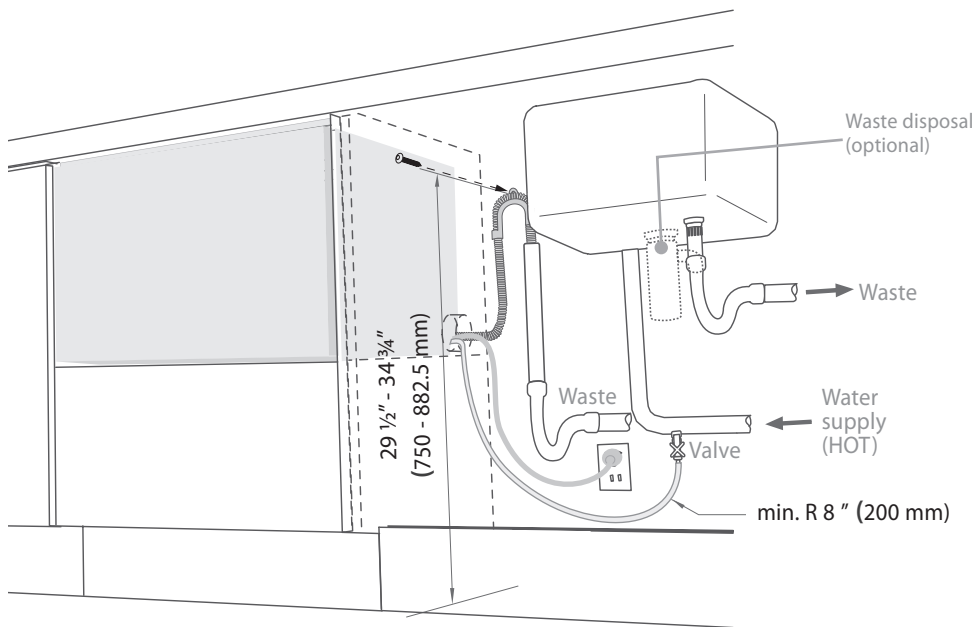
## DishDrawer® using Air Break with Drain Hose Joiner



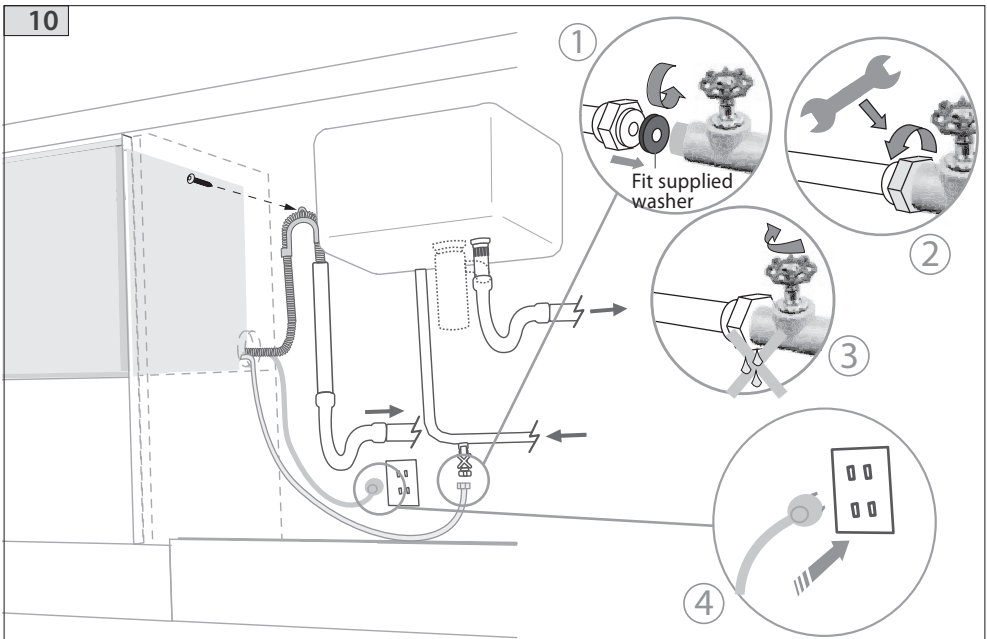
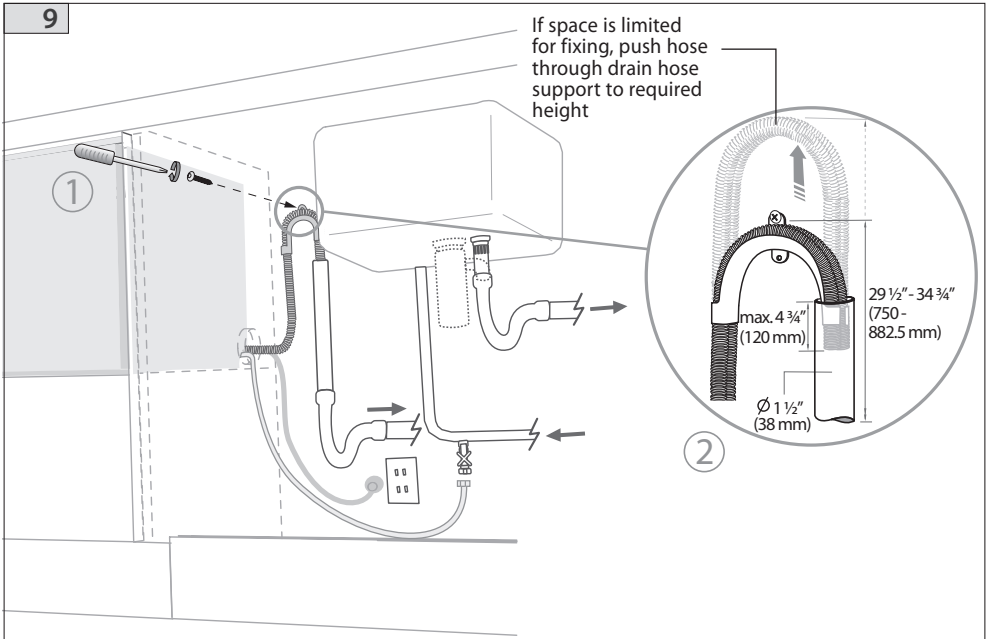
# Plumbing and drainage - OPTION 3

## DishDrawer® and Standpipe $\varnothing$ 1 1/2" (38 mm)

SINGLE MODELS

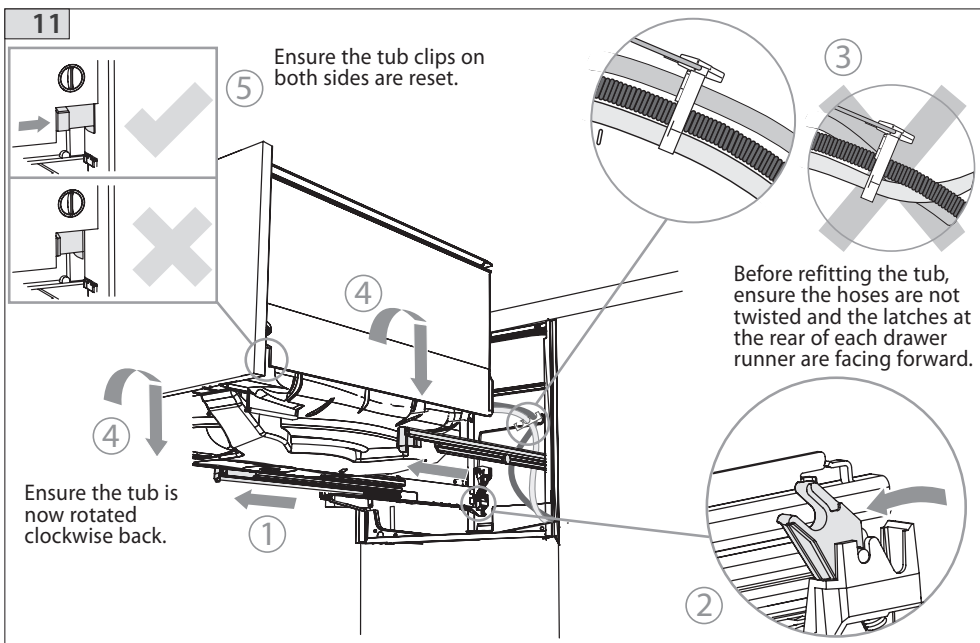


## DishDrawer® and Standpipe $\varnothing$ 1 1/2" (38 mm)

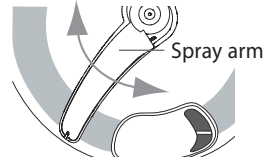


# Refitting the tub

SINGLE MODELS



- Check all parts are installed.
- Ensure product is level, securely fastened to the cabinetry and opens and closes freely. The DishDrawer® must be free to fully close with no resistance from the cabinetry.
- Ensure inlet hose to water supply has rubber washer fitted and is tightened a further half turn after seal contact.
- Ensure any knockouts or plugs in drain connection have been drilled out and drain connection has been made.
- The drain hose connector must not support the weight of excess hoses. Keep hoses as fully extended as possible to prevent sagging. Any excess length of hose should be kept on the dishwasher side of the high loop.
- If using Plumbing and Drainage OPTION 1, ensure the Highloop is a minimum 6" (150 mm) higher than the drain hose connector.
- Turn on the power and water supply. Then press the power button to turn the DishDrawer® on. The DishDrawer® should beep and cycle select lights light up.
- Check the sprayarm(s) are in place and free to rotate.
- Add three cups of water into the DishDrawer®.
- On the Wash Programme Selector Panel press Rinse and close the drawer(s). Start the programme by pressing the Start/Pause button.
- After the Rinse programme has finished, ensure machine has run and drained correctly.
- Check water supply and drainage connection for leakage.



***Repeat for each Drawer.***

## Troubleshooting

- **Excessive water remaining above the filter plate, after the rinse cycle**  
Check for kinked drain hoses or blocked waste connection, high loop not properly installed or drain hoses not routed correctly.
- **No water supply (⊗ shows on display)**  
Check water is connected, turned on and the spray arm(s) is correctly fitted and free to rotate.
- **DishDrawer® does not light up when the tub is opened**  
Ensure power is connected and is switched on. Check if Auto Power option is on.
- **Water around water supply and drainage connections**  
Check connections, existing plumbing and hoses for leaks. Check washer and hose clamps are correctly fitted.
- **If product is tipping**  
Ensure the product is secured to the cabinetry. Refer to page 8 or 21.
- **If front panels are misaligned**  
Check and relevel product. Check the cabinetry is square.
- **Drawer(s) don't close properly**  
Ensure nothing is obstructing the drawer(s) from closing properly ie sound insulation, hoses or tub latches.
- If a problem occurs, consult the Troubleshooting section of the User Guide.
- If after checking these points you still need assistance, please contact us through a DCS Customer Care Representative by phone: 1-888-281-5698, email: support@dcsappliances.com or www.dcsappliances.com



---

Quality provided by Fisher & Paykel Appliances Inc.

---

Fisher & Paykel Appliances, Inc.  
5900 Skylab Road, Huntington Beach, CA 92647  
Customer Care: 888.281.5698  
Fax: 714.372.7003  
[www.dcsappliances.com](http://www.dcsappliances.com)

As product improvement is an ongoing process at DCS, we reserve the right to change specifications or design without notice.

DCS améliore constamment ses produits et se réserve le droit de modifier les spécifications ou la conception de ses produits sans aucun préavis.

P/N 529636 Rev. A  
Litho in USA 07/2007