



## **30" EURO HOOD**

Parts List

**MODEL:**

VS30

**PRODUCT CODE:**

70450

## PRODUCT

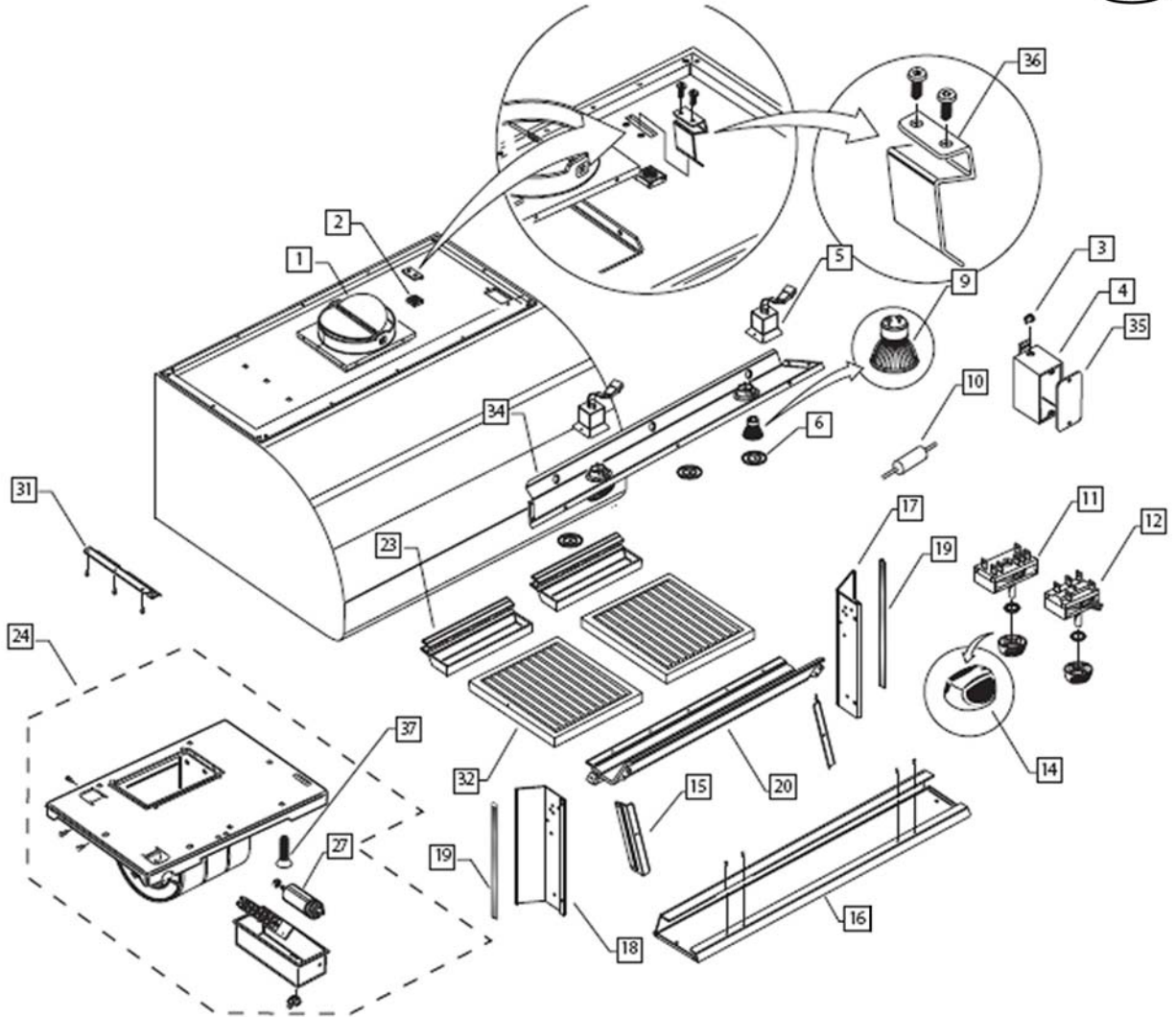
|                     |           |
|---------------------|-----------|
| <b>Brand</b>        | DCS       |
| <b>Voltage</b>      | 110V 60Hz |
| <b>Model</b>        | VS30      |
| <b>Product Code</b> | 70450     |

**Fisher & Paykel Appliances**  
5900 Skylab Road, Huntington  
Beach, CA 92647  
Customer Care: (888) 281-5698  
Fax: (714) 372-7003  
[www.dscappliances.com](http://www.dscappliances.com)  
[support@dscappliances.com](mailto:support@dscappliances.com)

# CONTENTS

HOOD COMPONENTS .....6

# HOOD COMPONENTS



DWG000655 20 JULY 2006

## HOOD COMPONENTS

| REF | PART   | DESCRIPTION                    |
|-----|--------|--------------------------------|
| 1   | 237337 | DAMPER (8" DUCT)               |
| 2   | 237666 | TINNERMAN CLIP & NUT (CAGE)    |
| 3   | 237665 | WIRE GROMMET                   |
| 4   | 237643 | JUNCTION BOX                   |
| 5   | 237647 | HALOGEN LIGHT BULB RECPTACLE   |
| 6   | 237459 | BEZEL LIGTH                    |
| 9   | 237458 | LIGHT BULB HALOGEN             |
| 10  | 237336 | DIODE                          |
| 11  | 237332 | LIGHT SWITCH                   |
| 12  | 237333 | BLOWER SWITCH                  |
| 14  | 220764 | KNOB 35mm OD ASSEMBLY          |
| 15  | 237653 | BRACKET, FRONT PANEL           |
| 16  | 237658 | FRONT PANEL ES30, VS30         |
| 17  | 237698 | AIR BAFFLE R/H VS30/36/1236/48 |
| 18  | 237697 | AIR BAFFLE L/H VS30/36/1236/48 |
| 19  | 237659 | INSULATOR STRIP                |
| 20  | 237702 | FILTER RETAINER, VS30          |
| 23  | 237339 | GREASE TRAY (VS)               |
| 24  | 237335 | BLOWER MOTOR ASSY SINGLE       |
| 26  | 237654 | CLAMP, BLOWER MOUNT            |
| 27  | 237331 | CAPACITOR                      |
| 32  | 237340 | BAFFLE FILTER (VS/IVS)         |
| 34  | 237644 | LIGHT PANEL, VS30              |
| 35  | 237642 | JUNCTION BOX COVER             |
| NI  | 237460 | HARNESS                        |
| NI  | 237680 | HARNESS LIGHTS                 |
| 36  | 237714 | SPRING CLIP, BLOWER MOTOR MNT  |
| 37  | 237669 | BOLT, BLOWER MOUNT             |