

This Owner's Manual is provided and hosted by [Appliance Factory Parts](#).



# HEARTH LAND MEMPHIS PRO Owner's Manual

[Shop genuine replacement parts for HEARTH LAND  
MEMPHIS PRO](#)

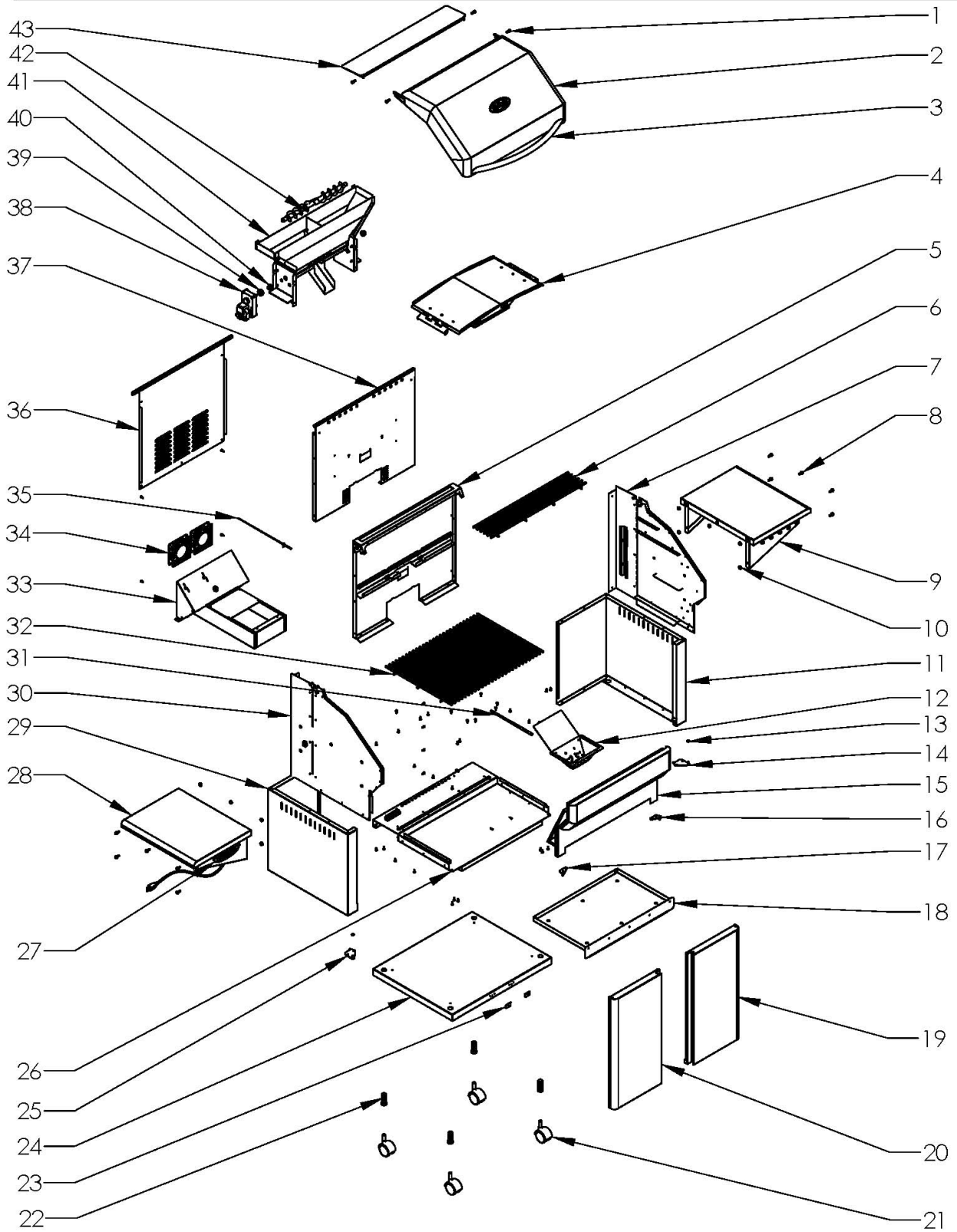


[Find Your HEARTH LAND Grill Parts - Select From 4 Models](#)

----- Manual continues below -----

# Memphis Pro Wood Fire Grill Parts List

## EXPLODED VIEW - VG0001



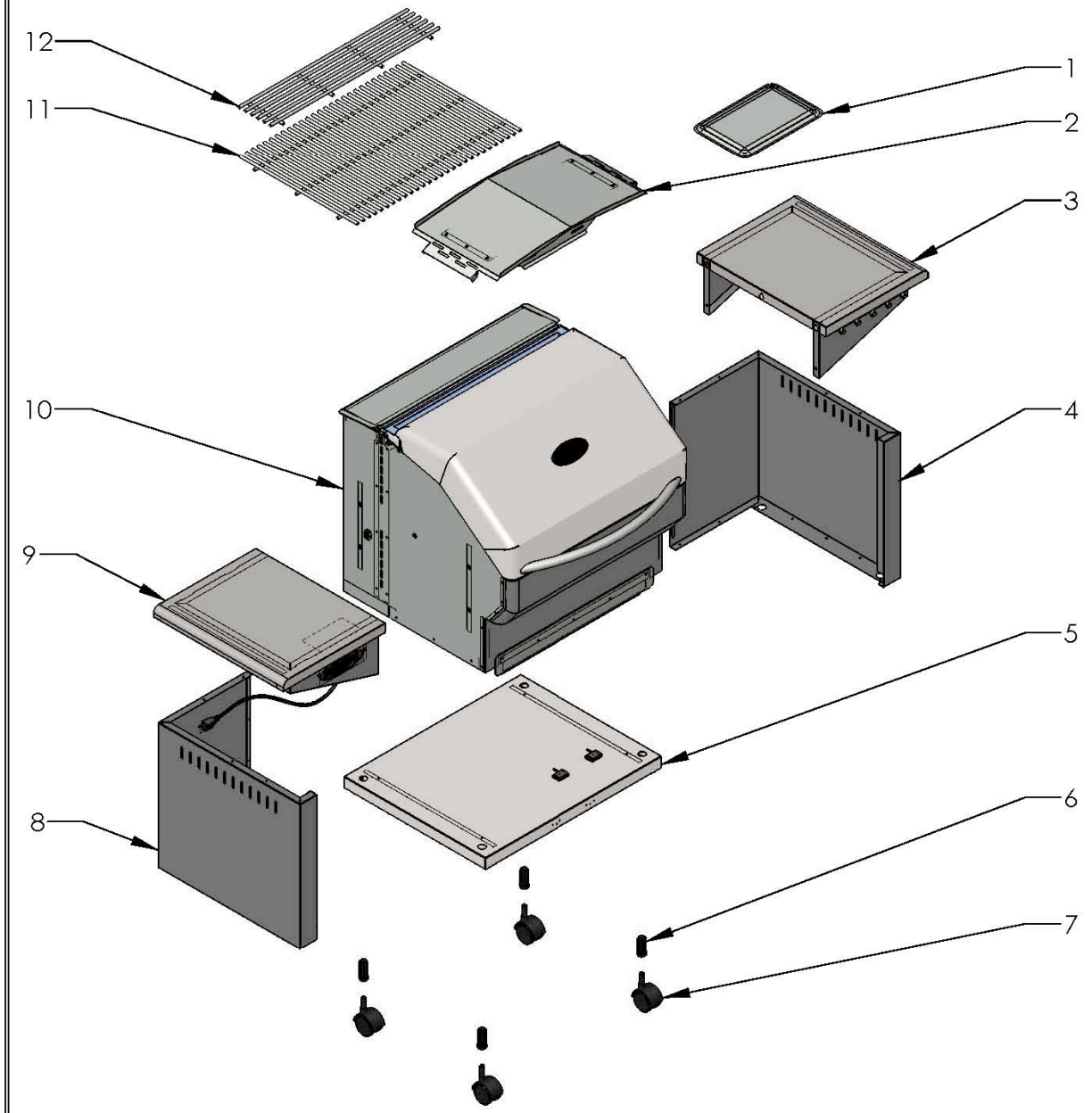
VG5501 REV.B 8/04/09

**VG0001  
EXPLODED VIEW PART LIST**

ITEM	PART NUMBER	DESCRIPTION	QTY	ITEM	PART NUMBER	DESCRIPTION	QTY
1	DS2187	COVER/HOPPER LID HARDWARE	4	21	VG0919	CASTER	1
2	VG1101	GRILL COVER ASSEMBLY - PAINTED	1	22	DS4457	CASTER SOCKET	4
	VG1101S	GRILL COVER ASSEMBLY - STAINLESS STEEL		23*	DS4472	MAGNET LATCH PLATE	2
3	VG0104	COVER HANDLE	1	24	VG0203	BASE SHELF - PAINTED	1
4	VG4403	INTEGRATED FLAVORIZER / HEAT DEFLECTOR	1		VG0203S	BASE SHELF - STAINLESS STEEL	
5	VG1120	FIREBOX BACK ASSEMBLY - PAINTED	1	25*	VG0211	HINGE BOTTOM, LEFT	1
	VG1120S	FIREBOX BACK ASSEMBLY - STAINLESS STEEL		26	VG0106	GRILL BOTTOM	1
6	VG4402	SMALL GRATE		27	VG0921	INTELLIGENT TEMPERATURE CONTROL	1
7	VG1121	SIDEWALL ASSEMBLY, RIGHT - PAINTED	1	28	VG2207	SHELF ASSEMBLY, LEFT - PAINTED	1
	VG1121S	SIDEWALL ASSEMBLY, RIGHT - STAINLESS STEEL			VG2207S	SHELF ASSEMBLY, LEFT - STAINLESS STEEL	
8	DS2178	SHELF HARDWARE	1	29	VG0202	BASE SIDE, LEFT - PAINTED	1
9	VG2206	SHELF ASSEMBLY, RIGHT - PAINTED	1		VG0202S	BASE SIDE, LEFT - STAINLESS STEEL	
	VG2206S	SHELF ASSEMBLY, RIGHT - STAINLESS STEEL		30	VG1122	SIDEWALL ASSEMBLY, LEFT - PAINTED	1
10	VG0216	SHELF WASHER	10	VG1122S	SIDEWALL ASSEMBLY, LEFT - STAINLESS STEEL		
11	VG0201	BASE SIDE, RIGHT - PAINTED	1	31	VG0928	IGNITER	1
	VG0201S	BASE SIDE, RIGHT - STAINLESS STEEL		32	VG4401	LARGE GRATE	2
12	VG2125	BURN POT	10	33	VG1104	FAN HOUSING ASSEMBLY	1
13*	DS4213	DELTRIN WASHER	1	34	VG0906	FAN	2
14*	VG0210	HINGE BOTTOM, RIGHT	1	35	VG0916	TEMPERATURE PROBE	1
15	VG0111	GRILL FRONT - PAINTED	2	36	VG0115	REAR PANEL - PAINTED	1
	VG0111S	GRILL FRONT - STAINLESS STEEL			VG0115S	REAR PANEL - STAINLESS STEEL	
16*	VG0212	HINGE TOP, RIGHT	1	37	VG0110	GRILL COMPONENT BACK	1
17*	VG0213	HINGE TOP, LEFT	1	38	VG0905	AUGER MOTOR	1
18	VG2121	TRAY ASSEMBLY - PAINTED	1	39	VG0912	AUGER SHAFT COLLAR	1
	VG2121S	TRAY ASSEMBLY - STAINLESS STEEL		40	VG0904	AUGER SHAFT BUSHING	2
19*	VG2204	DOOR ASSEMBLY, RIGHT - PAINTED	1	41	VG33001	PELLET HOPPER ASSEMBLY	1
	VG2204S	DOOR ASSEMBLY, RIGHT - STAINLESS STEEL		42	VG9901	AUGER	1
20*	VG2201	DOOR ASSEMBLY, LEFT - PAINTED	1	43	VG0112	PELLET HOPPER LID - PAINTED	1
	VG2201S	DOOR ASSEMBLY, LEFT - STAINLESS STEEL			VG0112S	PELLET HOPPER LID - STAINLESS STEEL	

\* OPTIONAL ITEMS

# VG0001 ASSEMBLY COMPONENTS

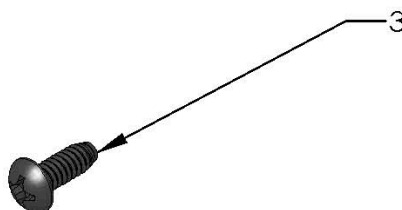
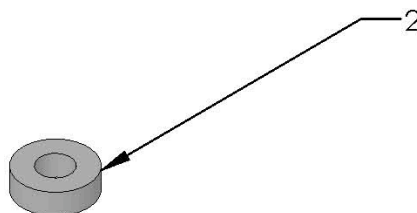
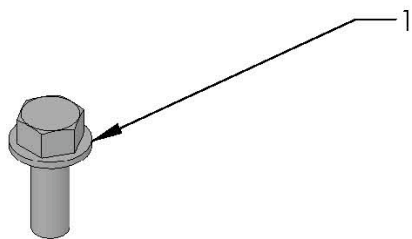


VG5502 REV.B 8/03/09

**VG0001**  
**ASSEMBLY COMPONENTS**

ITEM	DESCRIPTION	PART NUMBER	QTY
1	MAIN HARDWARE KIT	VG0801	1
2	INTEGRATED FLAVORIZER / HEAT DEFLECTOR	VG4403	1
3	SHELF ASSEMBLY, RIGHT - PAINTED	VG2206	1
	SHELF ASSEMBLY, RIGHT - STAINLESS STEEL	VG2206S	
4	BASE SIDE, RIGHT - PAINTED	VG0201	1
	BASE SIDE, RIGHT - STAINLESS STEEL	VG0201S	
5	GRILL BASE - PAINTED	VG0203	1
	GRILL BASE - STAINLESS STEEL	VG0203S	
6	CASTER SOCKET	DS4457	4
7	CASTER	VG0919	4
8	BASE SIDE, LEFT - PAINTED	VG0202	1
	BASE SIDE, LEFT - STAINLESS STEEL	VG0202S	
9	SHELF ASSEMBLY, LEFT - PAINTED	VG2207	1
	SHELF ASSEMBLY, LEFT - STAINLESS STEEL	VG2207S	
10	GRILL HEAD - PAINTED	VG1110	1
	GRILL HEAD - STAINLESS STEEL	VG1110S	
11	LARGE GRATE	VG4401	2
12	SMALL GRATE	VG4402	1

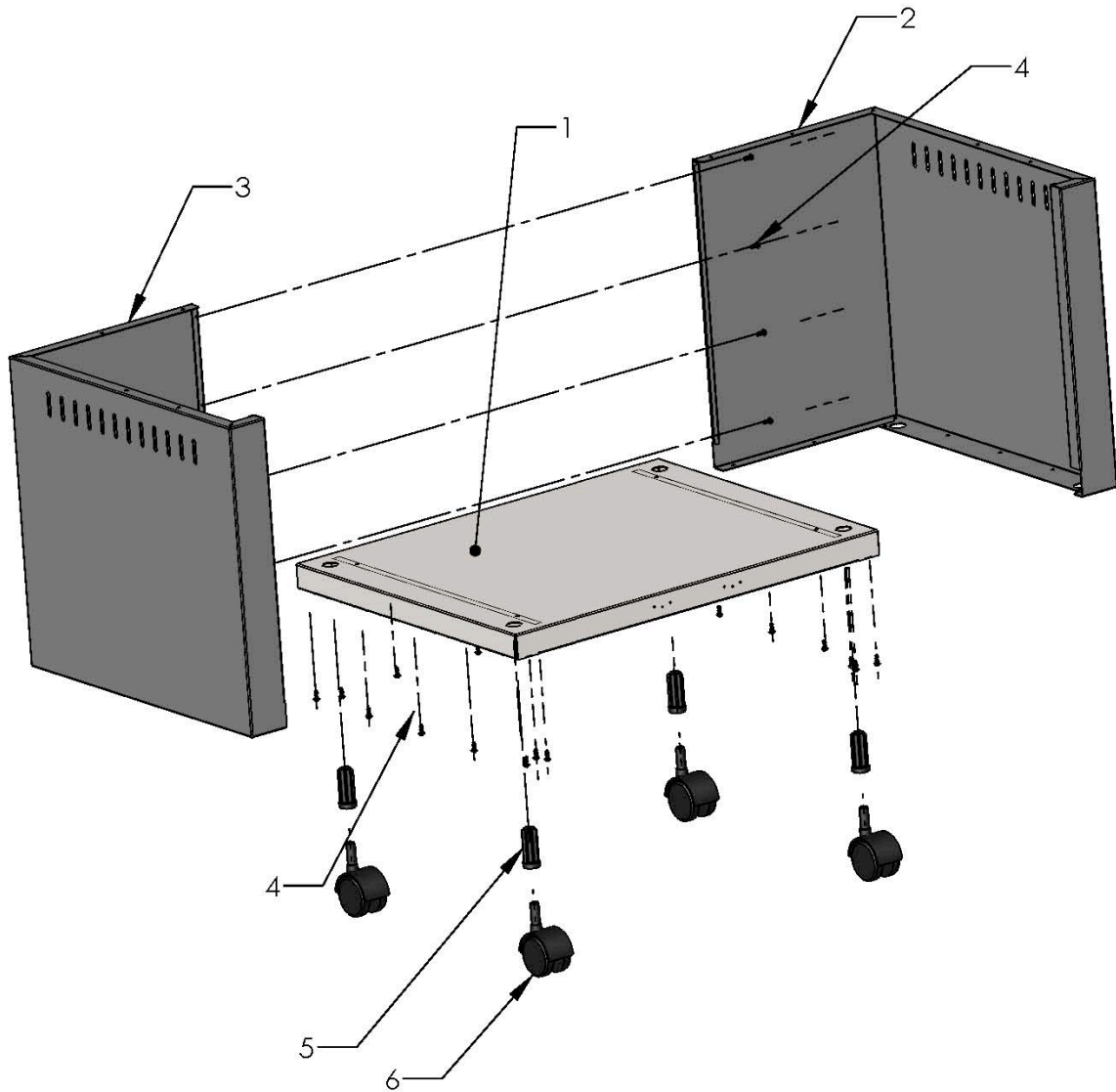
# VG0001 - HARDWARE KIT



ITEM NO.	PART NUMBER	DESCRIPTION	QTY.
1	DS2178	1/4-20 x .625" SERRATED HEX WASHER FLANGE SCREW	10
2	VG0216	SHELF WASHER	10
3	DS2185	#10 SELF-TAPPING SCREW	38

VG5503 REV.B 8/04/09

# VG0001 - ASSEMBLY STEP 1

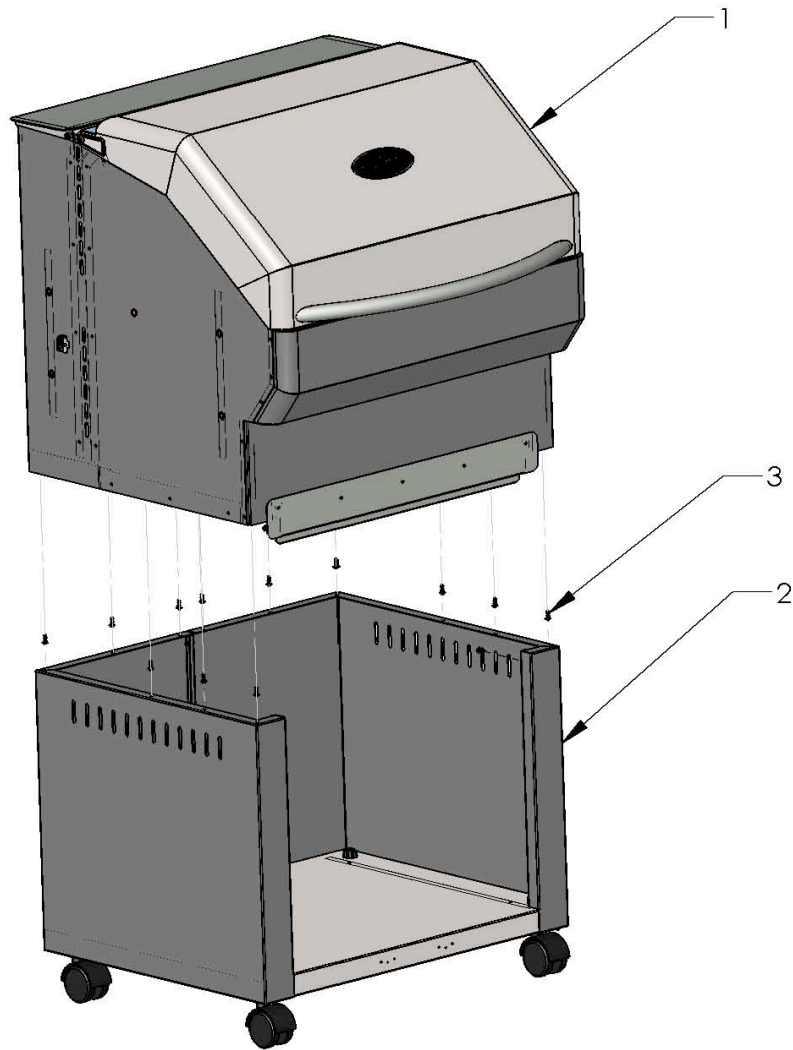


1. ATTACH ITEM 2 TO ITEM 1 USING ITEM 4 (10X).
2. ATTACH ITEM 3 TO ITEM 1 AND ITEM 2 USING ITEM 4 (14X).
3. PRESS-FIT ITEM 5 INTO HOLES IN ITEM 1 (4X) THEN ATTACH ITEM 6 TO ITEM 5 (4X).

ITEM	PART NO.	DESCRIPTION	QTY
1	VG0203	GRILL BASE	1
2	VG0201	BASE SIDE, RIGHT	1
3	VG0202	BASE SIDE, LEFT	1
4	DS2185	#10 SELF-TAPPING SCREW	24
5	DS4457	CASTER SOCKET	4
6	DS4458	CASTOR	4

VG5504 REV.B 8/04/09

## VG0001 - ASSEMBLY STEP 2

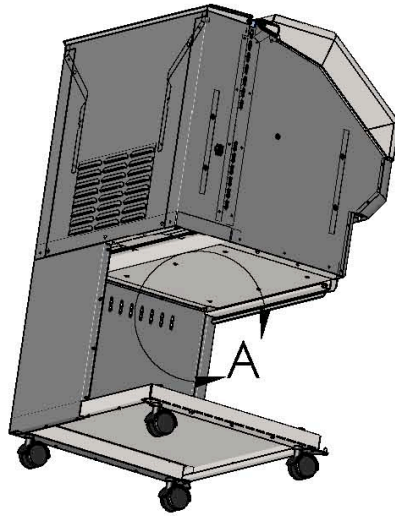


ATTACH ITEM 2 TO ITEM 1 USING ITEM 3 (14X).

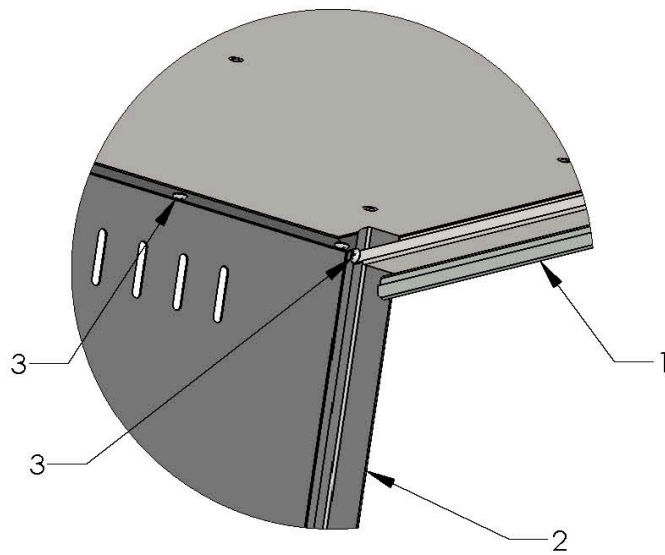
ITEM	PART NO.	DESCRIPTION	QTY
1	VG1110	GRILL HEAD	1
2	VG1123	BASE ASSEMBLY	1
3	DS2185	#10 SELF TAPPING SCREW	14

VG5505 REV.A 5/26/09

VG0001 - ASSEMBLY STEP 2  
SHEET 2

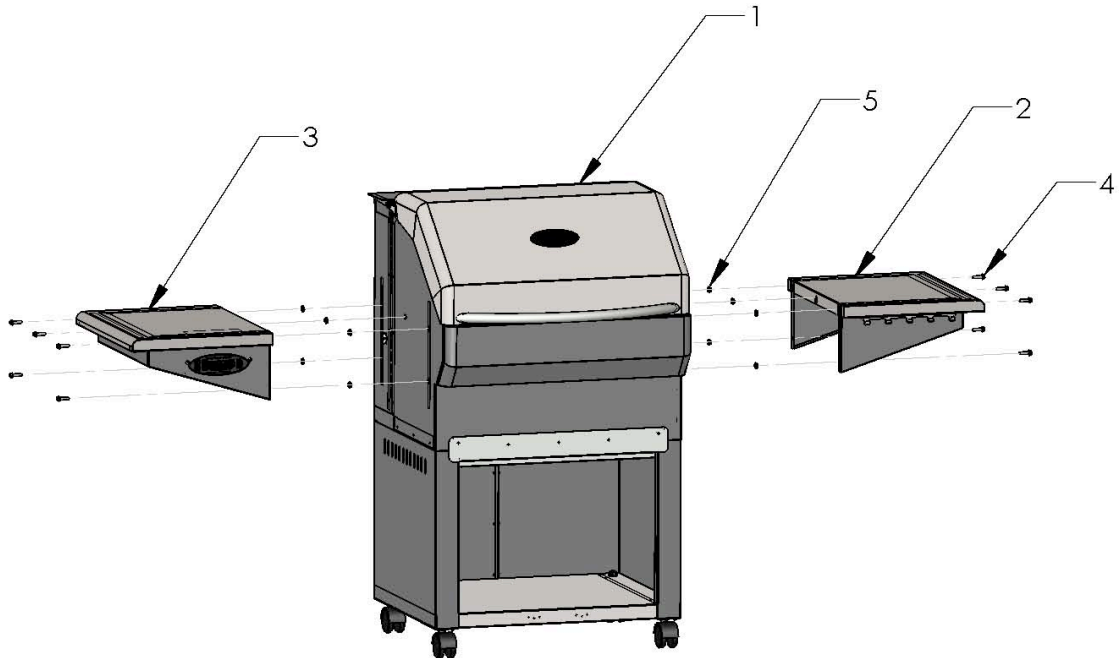


SUPPLEMENTAL VIEW  
(RIGHT SIDE REMOVED FOR CLARITY)



DETAIL A  
SCALE 1 : 4

## VG0001 - ASSEMBLY STEP 3

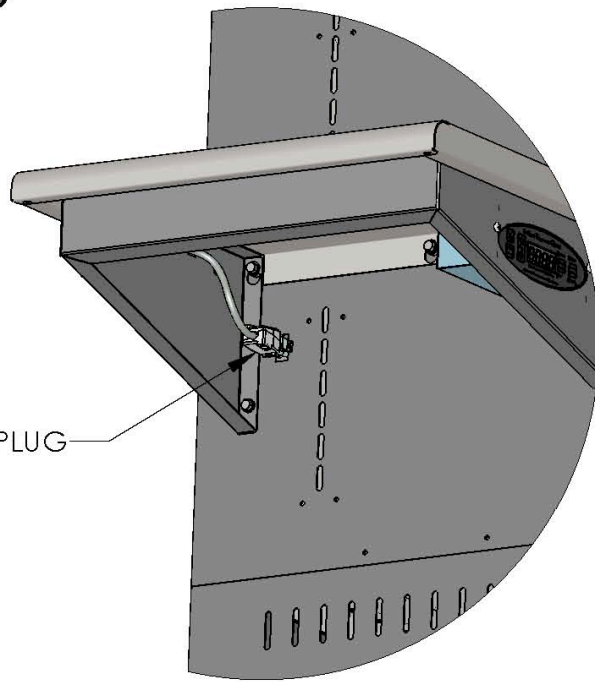
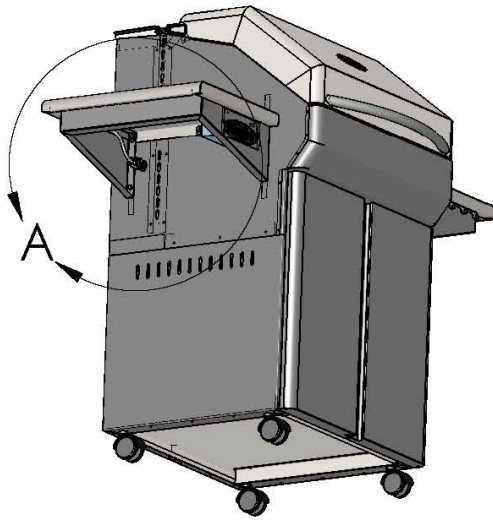


1. ATTACH ITEMS 4 & 5 IN TOP THREE HOLES ON EACH SIDE. DO NOT TIGHTEN.
2. PLACE ITEMS 2 & 3 ON BOLTS USING KEYWAY SLOTS. (NOTE: ITEM 5 SHOULD BE BETWEEN ITEM 1 AND ITEMS 2 & 3.)
3. ADD REMAINING ITEMS 4 & 5 AND TIGHTEN BOLTS.

ITEM	PART NO.	DESCRIPTION	QTY
1	VG1110	GRILL HEAD	1
2	VG2206	SHELF ASSY, RIGHT	1
3	VG2201	SHELF ASSY, LEFT	1
4	DS2178	1/4-20 X 3/4 BOLT	10
5	VG0216	SHELF WASHER	10

VG5507 REV.A 5/26/09

# VG0001 - ASSEMBLY STEP 4

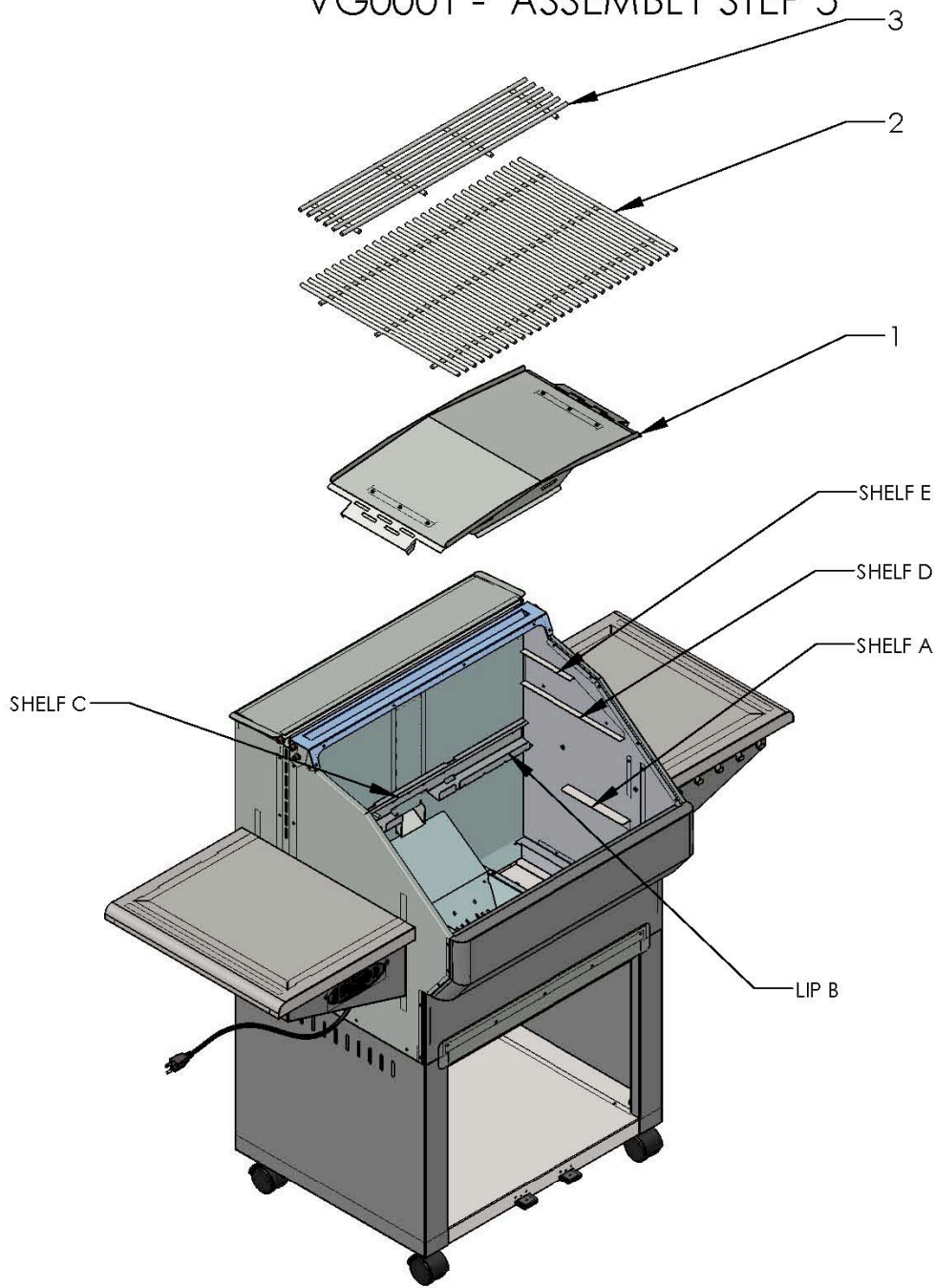


WIRING HARNESS PLUG

ATTACH WIRING HARNESS PLUG  
TO WIRE HARNESS RECEPTACLE.

DETAIL A  
SCALE 1 : 6

# VG0001 - ASSEMBLY STEP 5

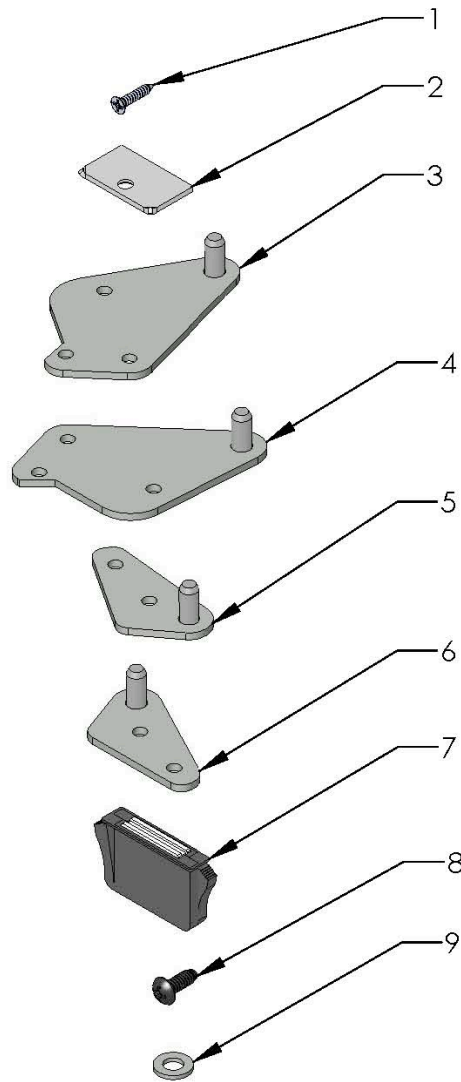


1. PLACE ITEM 1 ON SHELF A.
  2. PLACE ITEM 3 (2X) ON SHELF C
  3. PLACE ITEM 4 ON SHELF E
- IF ADDITIONAL QUANTITIES OF ITEM 3 ARE PURCHASED THEY MAY BE PLACED ON SHELF D. (COVER NOT SHOWN FOR CLARITY)

ITEM	PART NO.	DESCRIPTION	QTY
1	VG4403	HEAT DEFLECTOR	1
2	VG4401	LARGE GRATE	2
3	VG4402	SMALL GRATE	1

VG5509 REV.B 8/04/09

# VG0001 - DOOR ASSEMBLY, HARDWARE KIT

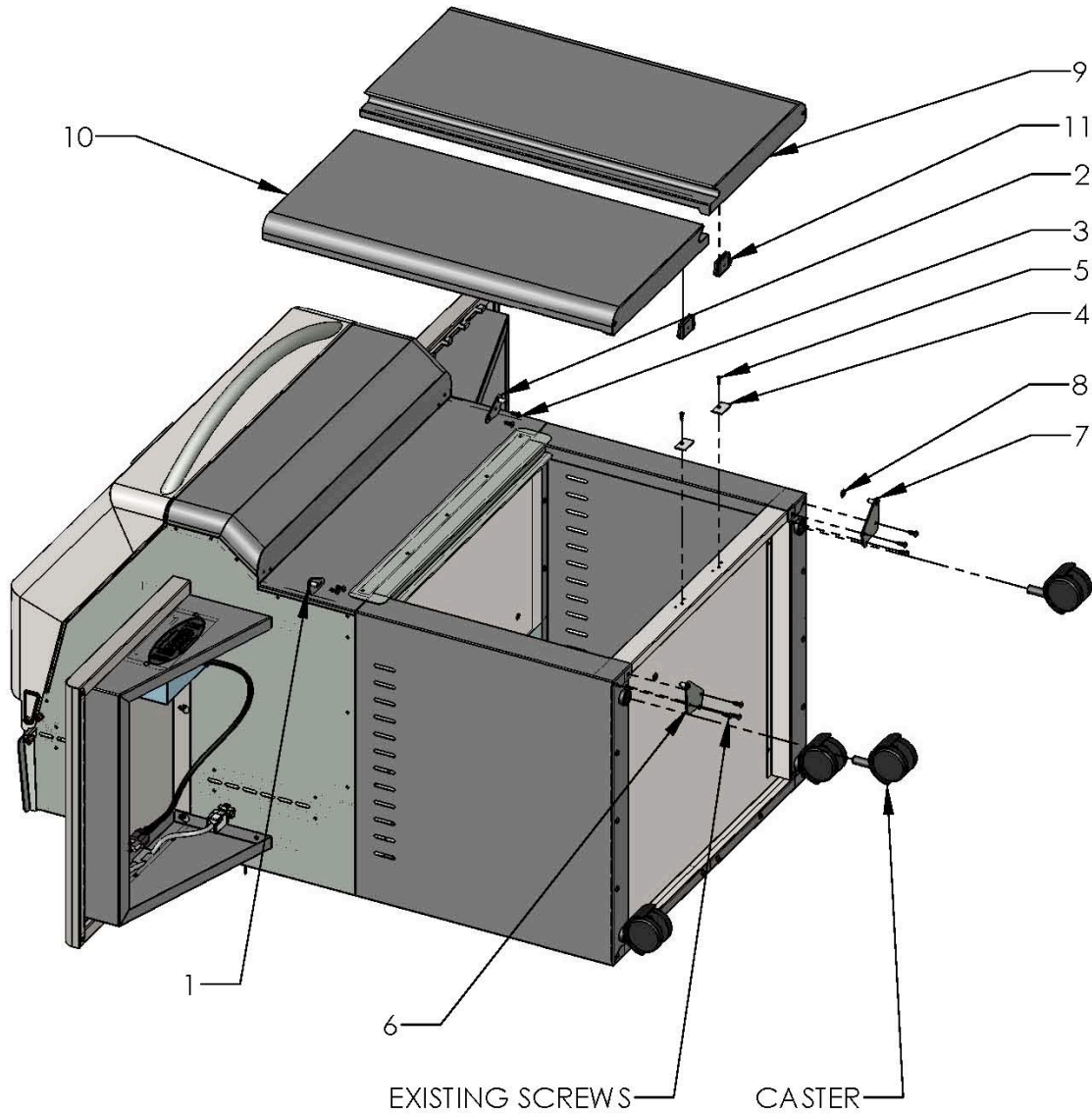


BOM Table

ITEM NO.	PART NUMBER	DESCRIPTION	QTY.
1	DS2188	#5 SELF-TAPPING SCREW	2
2	DS4472	MAGNET LATCH PLATE	2
3	VG0210	HINGE BOTTOM RIGHT	1
4	VG0211	HINGE BOTTOM LEFT	1
5	VG0212	HINGE TOP RIGHT	1
6	VG0213	HINGE TOP LEFT	1
7	VG0927	DOOR MAGNET	2
8	DS2185 DS2186	#10 SELF-TAPPING SCREW - PAINTED (BLACK) #10 SELF-TAPPING SCREW - STAINLESS STEEL	4
9	DS4213	DELFIN WASHER	2

VG-5510 REV.B 8/04/09

# VG0001 - DOOR ASSEMBLY



1. PLACE UNIT ON IT'S BACK ON A PROTECTIVE SURFACE.
2. ATTACH ITEMS 1 & 2 TO MAIN UNIT USING ITEM 3.
3. ATTACH ITEM 4 (2X) TO BASE SHELF USING ITEM 5.
4. REMOVE FRONT TWO CASTERS FROM THEIR SOCKETS AND REMOVE THE THREE SCREWS ON EACH TOP FRONT CORNER.
5. ATTACH ITEMS 6 & 7 TO MAIN UNIT USING SCREWS FROM STEP 5. LEAVE THESE SCREWS LOOSE, DO NOT TIGHTEN.
6. PLACE ITEM 8 (2X) ON PINS OF ITEM 6 & 7.
7. ATTACH DOORS (ITEMS 9 & 10) TO UPPER AND LOWER PINS AND TIGHTEN THE SCREWS THAT ATTACH ITEMS 6 & 7.
8. ATTACH ITEM 11 (2X), ONE FOR EACH DOOR.
9. REPLACE CASTERS.

ITEM	PART NO.	DESCRIPTION	QTY
1	VG2013	HINGE TOP, LEFT	1
2	VG2012	HINGE TOP, RIGHT	1
3	DS2185	#10 SELF-TAPPING SCREW- PAINTED (BLACK)	4
	DS2186	#10 SELF-TAPPING SCREW - STAINLESS STEEL	
4	DS4472	MAGNET LATCH PLATE	2
5	DS2188	#5 SCREW	2
6	VG0211	HINGE BOTTOM, LEFT	1
7	VG0210	HINGE BOTTOM, RIGHT	1
8	DS4213	DELKIN WASHER	2
9	VG2204	DOOR ASSEMBY, RIGHT	1
10	VG2201	DOOR ASSEMBY, LEFT	1
11	VG0927	DOOR MAGNET	2

VG5511 REV.B 8/04/09