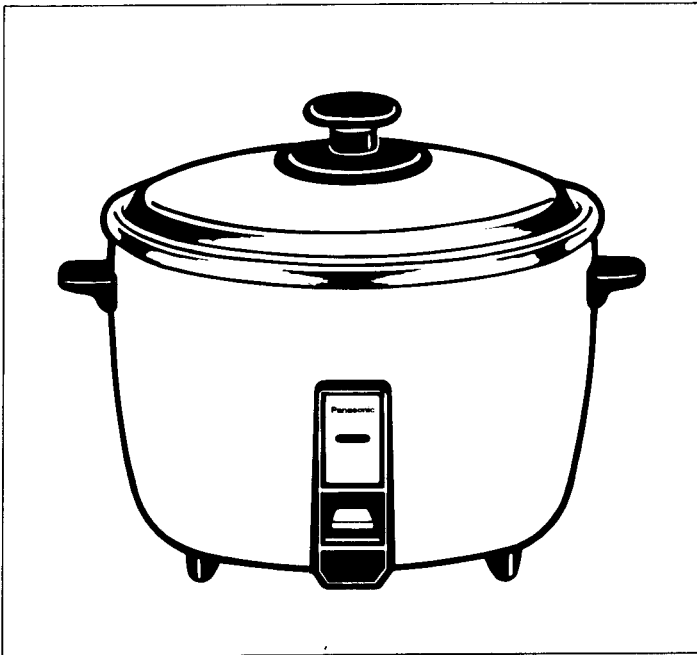


Operating Instructions

Commercial Rice Cooker
SR-42HZP/42FZ



Panasonic®

Before using this cooker, please read these instructions completely.

在使用本機前，請詳細閱讀此使用說明書

Antes de usar la marmita, lea estas instrucciones hasta el final.

사용하시기 전에 이 설명서를 잘 읽어 주십시오.

Xin đọc hết những phần chỉ dẫn này, trước khi bắt đầu sử dụng nồi cơm điện. Việt ngữ

ENGLISH P3 - P4

中文 P5 - P6

ESPAÑOL P7 - P8

한국어 P9 - P10

P11 - P12

IMPORTANT SAFEGUARDS

When using electrical appliances, basic safety precautions should always be observed including the following:

1. Read all instructions.
2. **Do not** touch hot surfaces. Use handles or knobs.
3. To protect against electrical shock, **do not** immerse cord, plugs, and Rice Cooker, except lid and pan, in water or other liquid.
4. Close supervision is necessary when any appliance is used by or near children.
5. Unplug from outlet when not in use and before cleaning. Allow to cool before putting on or taking off parts.
6. Do not operate any appliance with a damaged cord or plug or after the appliance malfunctions or has been damaged in any manner. Return appliance to the nearest authorized service facility for examination, repair, or adjustment.
7. The use of accessory attachments not recommended by the appliance manufacturer may cause injuries.
8. Do not use outdoors.
9. Do not let cord hang over edge of table or counter, or touch hot surfaces.
10. Do not place on or near a hot gas or electric burner, or in a heated oven.
11. Extreme caution must be used when moving an appliance containing hot oil or other hot liquids.
12. Do not use appliance for other than intended use.

13. SAVE THESE INSTRUCTIONS

NOTE

- A. A short power supply cord set is provided to reduce the risk resulting from becoming entangled in or tripping over a longer cord.
- B. Longer cord set or extension cords are available and may be used if care is exercised in their use.
- C. If a longer cord set or extension cord is used,
 - (1) the marked electrical rating of the cord set or extension cord should be at least as great as the electrical rating of the appliance,
 - (2) the longer cord should be arranged so that it will not drape over the countertop or tabletop where it can be pulled on by children or tripped over unintentionally.

PARTS IDENTIFICATION/ 零件名稱
IDENTIFICACION DE LAS PARTES/ 부품 확인
TÊN GỌI CÁC BỘ PHẬN

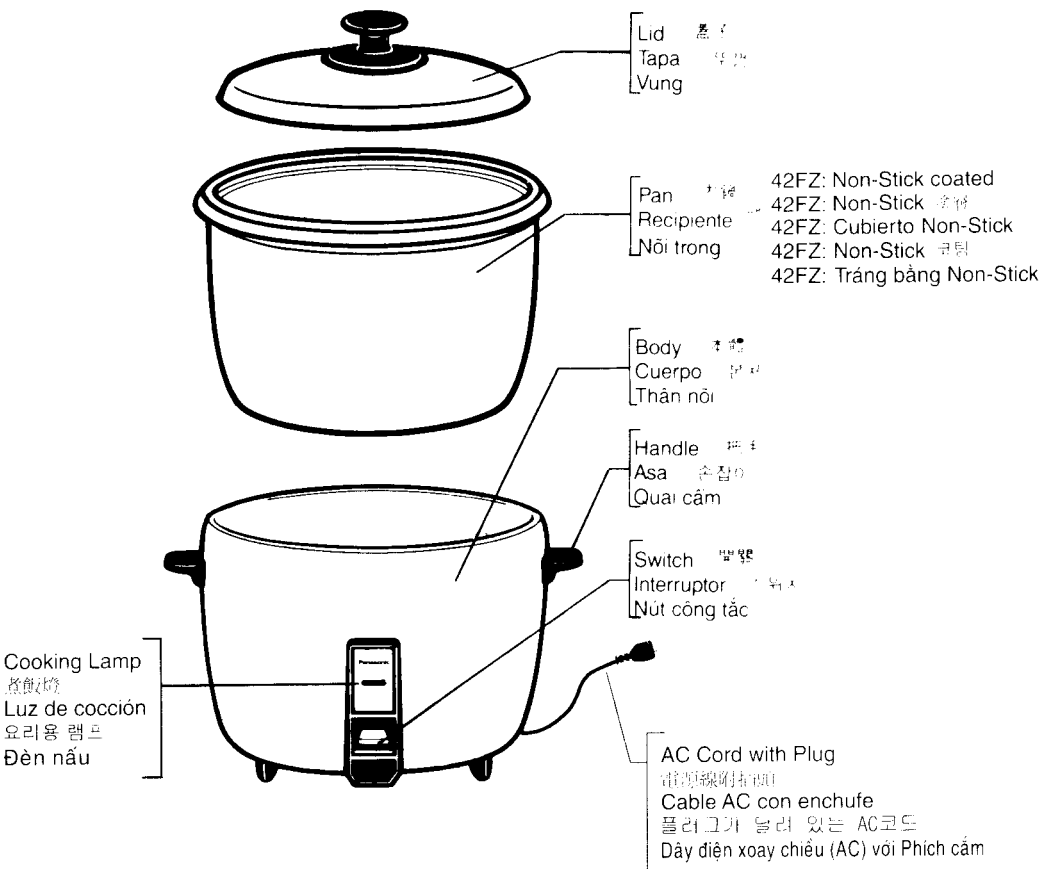
ENGLISH

中文

ESPAÑOL

한국어

VIỆT NGỮ



Accessories/ 附件 /Accesorios/ 부속 /Đồ phụ tùng

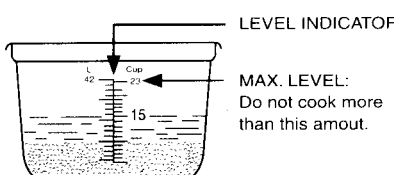


Measuring cup
 (approx. 6 fl.oz./180 ml)
 量杯 约6 液体盎司/180毫升
 Taza medidora
 (aprox. 6 fl.oz./180 ml)
 계량컵 (약 6 fl.oz./180 ml)
 Cốc đo (khoảng 6 fl.oz./180 ml)

HOW TO USE

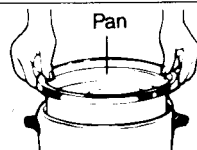
1 Measure rice with the measuring cup provided. One cup of uncooked rice makes approximately 3 cups of cooked rice by volume. Rinse rice in a separate bowl until water becomes relatively clear.

2 Place rinsed rice in the pan. Add water according to the following standard.

Using the markings on the pan	Using the measuring cup	
e.g. To cook 15 cups of rice, rinse the rice, put it into the pan and then add water to LEVEL INDICATOR 15.	Raw rice by cup	Water to be added
	23 cups	23-23 $\frac{1}{4}$ cups
	20 cups	20-20 $\frac{1}{4}$ cups
	15 cups	15-15 $\frac{1}{4}$ cups
	10 cups	10-10 $\frac{1}{4}$ cups
	5 cups	5-5 $\frac{1}{4}$ cups

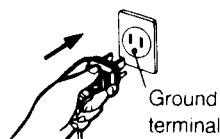
Adjust water quantity to your taste.

3 Set the pan in the cooker. To place it correctly on the heater, turn the pan gently to right and left. Cover with the lid and let rice soak approximately 30 minutes.



4 Plug in. Be sure the wall outlet has a ground terminal. Do not plug in until ready to cook. Otherwise, rice may be ruined.

If the pan is not in the cooker, cooking will not begin.



5 Press the switch a red "Cooking" lamp tells you cooking has started



6 When rice is done, the switch will pop up and the "Cooking" lamp goes out.

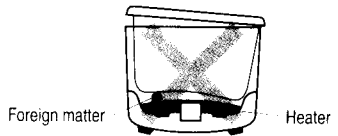
7 After the switch pops up, leave the lid closed for at least 15 minutes to steam rice.

8 Unplug after use. Grasp the plug, not the cord.

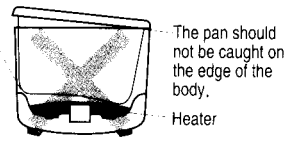
CAUTION

- 1** •Make sure that the pan is sitting properly in the cooker.
If the pan is not positioned correctly, the switch may click off too soon or the heater may be damaged.

WRONG



The pan should not be caught on the ledge above the heater.

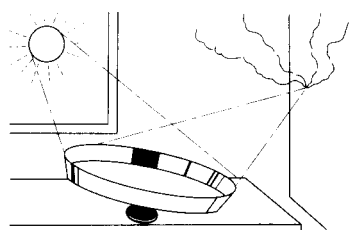


The pan should not be caught on the edge of the body.

Your rice cooker has been designed with a thermal fuse which may shut the heater off in these cases.

- Be sure the switch is off before removing the pan.

- 2** Replace all damaged parts immediately.
- 3** Do not leave the lid down-side up in places subjected to direct sunlight.
If direct light is subjected to the concave side of the lid, it may focus on furniture, walls, etc., and damages may result.



- 4** Do not tilt the rice-cooker on its edge or place it upside down with its power supply plug connected, as this may cause damage.
- 5** Non-stick coated pan may discolor with age. This is normal, **DO NOT** use metal utensils with non-stick coated pan (42FZ only)

HOW TO CLEAN

1. Unplug before cleaning.
2. Soak the pan in hot water to loosen cooked-on rice.
3. Do not immerse the body in water or any other liquid. Wipe with a damp cloth.
4. Do not use abrasive cleaners or steel wool. Clean with non-metal brush or sponge.

SPECIFICATIONS

Model No.	Power supply	Power consumed	Capacity	Dimensions (HxWxD)	Weight	Accessories
SR-42HZP SR-42FZ	120V AC	1,550W	1.0 ~ 4.4 qts (0.9 ~ 4.2 L)	11 ¹ / ₂ " x 17" x 14 ¹ / ₂ " (30 x 43 x 37 cm)	12.1 lbs (5.5 kg)	Measuring cup (approx. 6 fl.oz./180 ml)

規格

型號	電源	消耗電力	容量	尺寸(高x寬x深)	重量	附件
SR-42HZP SR-42FZ	120伏 AC	1,550瓦	1.0~4.4夸爾 (0.9~4.2公升)	11 ¹ / ₂ " x 17" x 14 ¹ / ₂ " (30 x 43 x 37厘米)	12.1磅 (5.5公斤)	量杯 (約6流體盎司/180毫升)

ESPECIFICACIONES

N.º de modelo	Alimentación	Consumo	Capacidad	Dimensiones (Al x An X Prf)	Peso	Accesorios
SR-42HZP SR-42FZ	120V CA	1,550W	1.0 ~ 4.4 qts (0.9 ~ 4.2 L)	11 ¹ / ₂ " x 17" x 14 ¹ / ₂ " (30 x 43 x 37 cm)	12.1 lbs (5.5 kg)	Taza medidora (aprox. 6 fl.oz./180 ml)

**Panasonic Consumer Electronic Company,
Division of Panasonic Corp. of North America**
One Panasonic Way Secaucus, New Jersey 07094
www.panasonic.com
Printed in Thailand

SR770M683BX
MAT0501-0