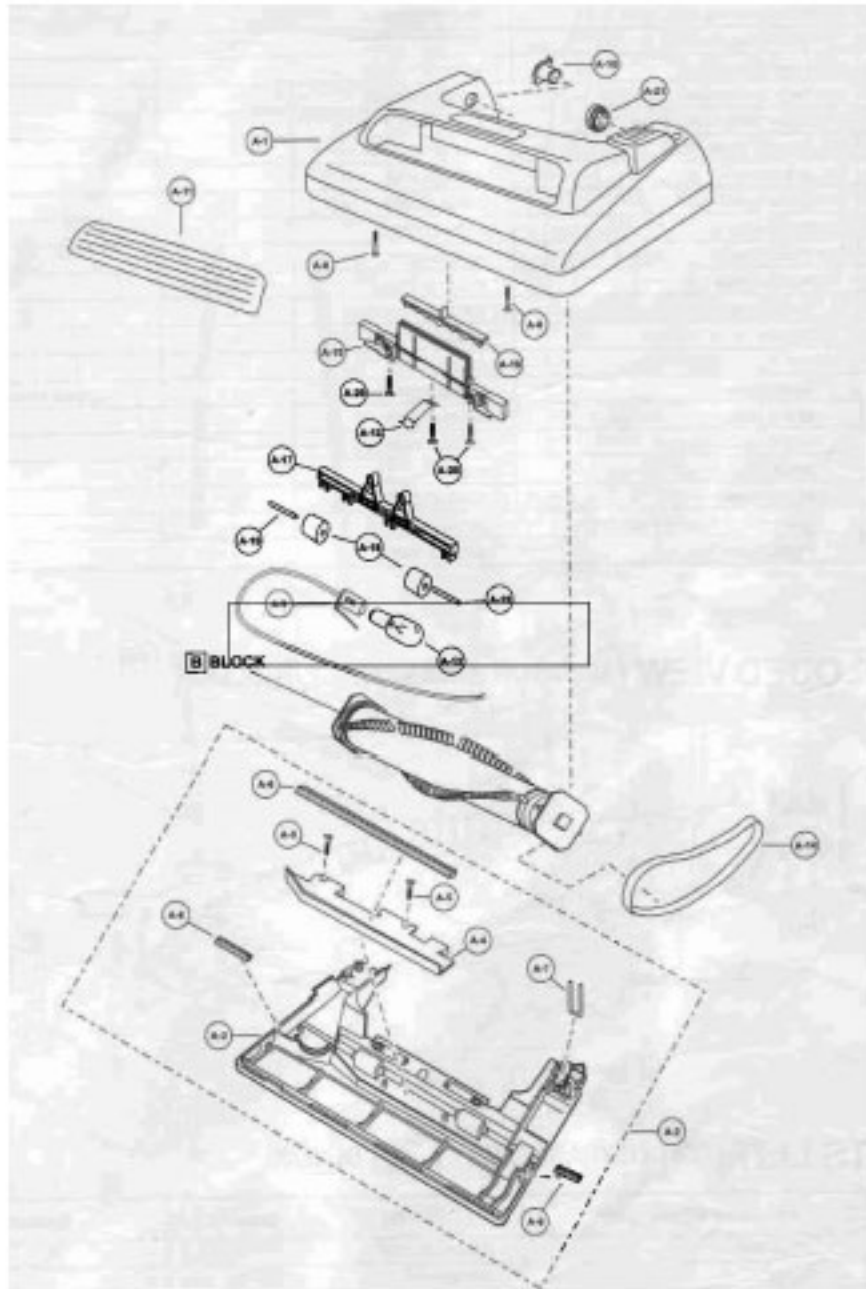


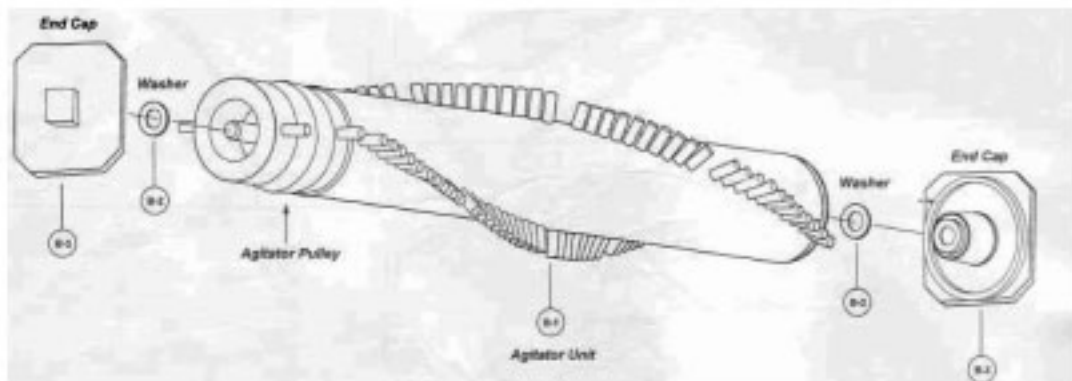
EXPLODED VIEW (NOZZLE HOUSING)... [A]BLOCK



PARTS LIST (NOZZLE HOUSING)... [A] BLOCK

Ref. No.	Part Name & Description	Part No.	Quantity	Remarks
A-1	Nozzle Housing	AC01AAPNZYU2	1	Furniture Guard Glued On
A-2	Lower Plate Assembly	AC91AAPNZV08	1	
A-3	Lower Plate	AC27AAPNZV08	1	
A-4	Body, Lower Plate	AC08AAJU200	1	
A-5	Screw (Body, Lower Plate)	AXTN4+188FY		
A-6	Packing, Lower Plate	AC19AAFYZV00	1	
A-7	Belt Cover	AMC438-V00	1	
A-8	Screw, Lower Plate	AC88AAZAZ00		
A-9	Bulb Socket	AC93HURZ00	1	
A-10	Plastic Shaft	AMC255-V00	1	
A-11	Window Cover	AC21HZFZ0U	1	
A-12	Pedal Spring	AMC57A-V00	1	
A-13	Bulb	AC28GADFZ00	1	
A-14	Belt	AC285JFZ00		
A-15	Slider Support	AC53KJFZV03	1	Includes Insulation Tape
A-16	Sliding Knob	AC57HJFZV05	1	
A-17	Height Adjustment Cam	AC61KJFZV08		
A-18	Wheel	AC90ONGZV05	2	
A-19	Shaft (Wheel)	AC18CNKZ00	2	
A-20	Screw (Slider Support, Pedal Spring)	AXTN4+188FY	3	
A-21	Plastic Holder	AMC78N-V00	1	

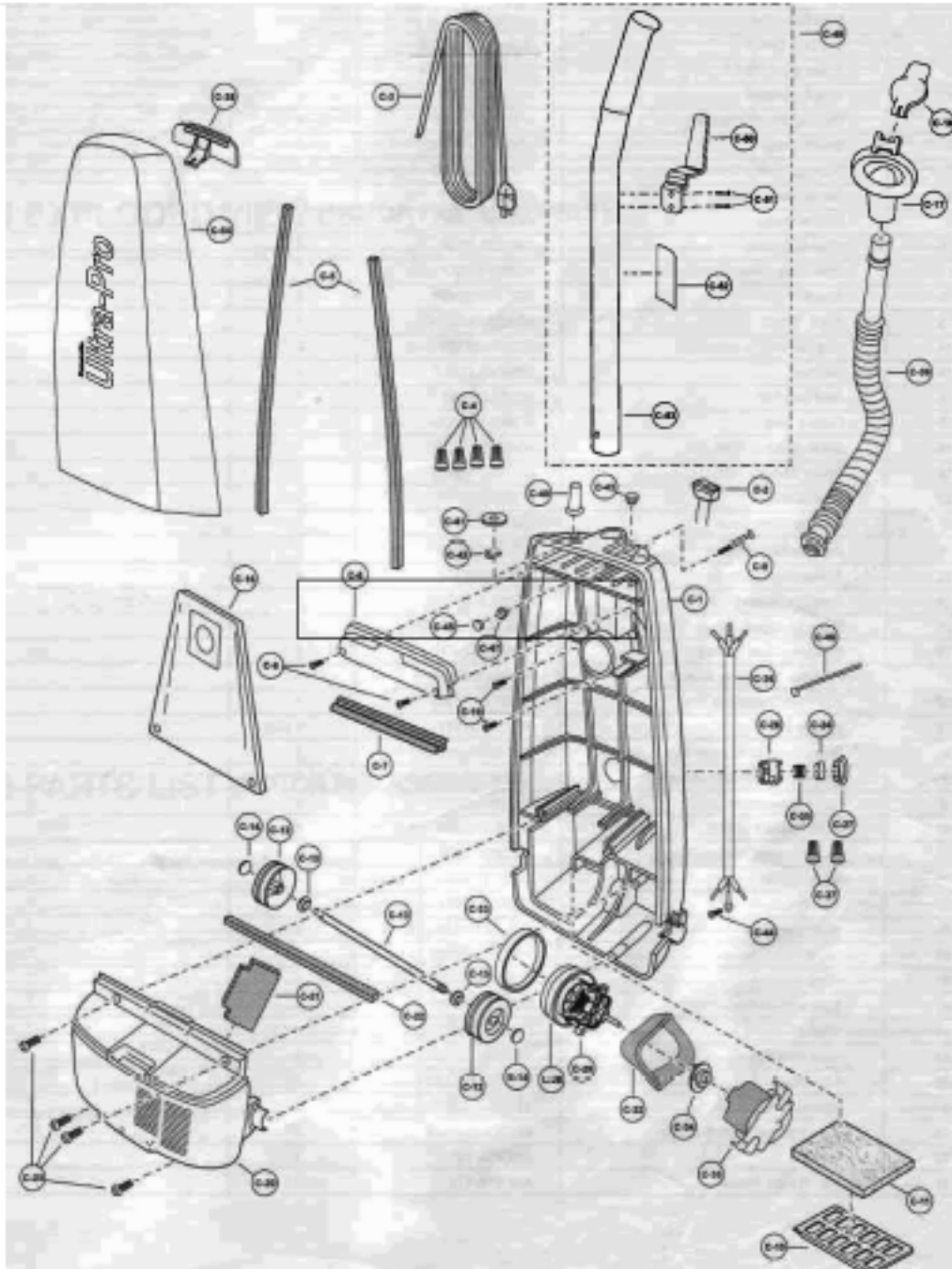
EXPLODED VIEW (AGITATOR ASSEMBLY)... [B] BLOCK



PARTS LIST (AGITATOR ASSEMBLY)... [B] BLOCK

Ref. No.	Part Name & Description	Part No.	Quantity	Remarks
B-1	Agitator Unit	AC84RAPNZ00	1	
B-2	Washer	AMC881-424	2	
B-3	End Cap	AC85CTCZ00	2	

■ EXPLODED VIEW (BODY, MOTOR HOUSING, AND MOTOR)... [C] BLOCK



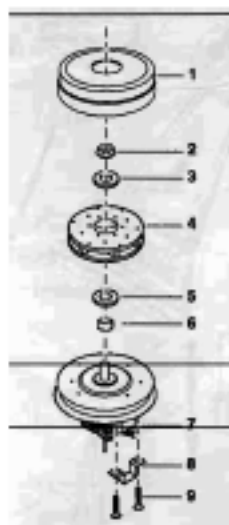
■ PARTS LIST (BODY, MOTOR HOUSING, AND MOTOR)... C BLOCK

Ref. No.	Part Name & Description	Part No.	Quantity	Remarks
C-1	Dust Container	AC88KAPN2U11	1	
C-2	ON/OFF Switch	AMC98E-V000U	1	
C-3	Power Cord (50 ft.)	AC94EAPN2U00	1	
C-4	Wire Connector	AMC-1CTCE23		
C-5	Packing (Dust Container)	AC88KV01KUC		
C-6	Switch Cover	AC03EV07V06	1	
C-7	Packing (Switch Cover)	AC73KV02KUC	1	
C-8	Screw (Switch Cover)	AXTN4+158FY		
C-9	Handle Screw	AMC73B-V00	1	
C-10	Filter Supporter	AMC32K-V00	1	
C-11	Secondary Filter (Electrostatic)	AC37KRF200	1	
C-12	Wheel	AC01CV02V06		
C-13	Shaft, Wheel	AC16CUS200	1	
C-14	Stopper, Wheel	AC74SUS200	2	
C-15	Weather	AXW06E115FY		
C-16	Dust Bag (JIS)	AC16KY200	1	
C-17	Suction Inlet	AC80HF74VU6	1	
C-18	Cover (Suction Inlet)	AC02HF73VU6	1	
C-19	Screw (Suction Inlet)	AXTN4+158FY	2	
C-20	Motor Case	AC09FJP2U01		
C-21	Packing (Rear Cover)	AMC02L-V00	1	
C-22	Packing (Motor Case)	AC16FJP2KUC	1	
C-23	Screw (Motor Case)	AXTN4+158FY		
C-24	Protector (Motor)	AC89KJM2V06	1	
C-25	Protector Spring (Motor, Blue)	AC70KAHH2B00	1	
C-26	Protector Case (Motor)	AC89KJM2V06	1	
C-27	Protector Supporter (Motor)	AC18MJM2V06	1	
C-28	Fan Motor Assembly	AC02FAFN2D13	1	
C-29	Carbon Brush	AC27FUR200	1 (Set)	
C-30	Brush Retainer Bracket (Not Illustrated)	AMC02D-V300U		
C-31	Screw, Brush (Not Illustrated)	AMC40D-V300U		
C-32	Noise Suppressor	AMC99G-L310X	1	
C-33	Motor Support (Front)	AMC02F-E00	1	
C-34	Motor Support Rubber (Rear)	AMC03F-V00	1	
C-35	Motor Cover	AC83FTE20U	1	
C-36	Wire Cord	AC37GTE20U	1	
C-37	Wire Connector	AMC-1CTCE23		
C-38	Latch	AC08DJP2V06	1	
C-39	Hose	AC34PV02V06	1	
C-40	Rubber Protector	AC81E4G2U01	1	
C-41	Weather	AXWE10J223FE	1	
C-42	Cord Retainer	AC06W15200	1	
C-43	Cover Cap	AC38HAJP2J00	1	
C-44	Screw, Grounding	AXYN4+E10FFY	1	
C-45	Tight Packing, Switch Cover	AC61LAGMZ00	1	
C-46	Wire Tie	AMC586-702	1	
C-47	Nut, Handle Screw	AMP21B-170	1	

■ PARTS LIST (HANDLE, HOSE, AND ATTACHMENTS)... [C] BLOCK (Cont.)

Ref. No.	Part Name & Description	Part No.	Quantity	Remarks
C-49	Handle Assembly	AC958TEZVU6	1	
C-50	Cord Hook	AC538TEZ00	1	
C-51	Screw (Cord Hook)	AC88AZAZ00	2	
C-52	Label (Caution)	AC33ZYRZ0K	1	
C-53	Handle	AC648TEZ00	1	
C-54	Dust Cover	AC80KAPNZUJ1	1	

■ EXPLODED VIEW (MOTOR FAN ASSEMBLY)



PARTS LIST (MOTOR FAN ASSEMBLY)

Ref. No.	Part Name & Description	Part No.	Quantity	Remarks
1	Fan Case	AMC53F-AV00U	1	
2	Nut	AMC33F-AC00U	1	
3	Washer (a)	AMC62F-AV00U	1	
4	Fan	AC98FRFZ00	1	
5	Washer (b)	AC62FRFZ00	1	
6	Spacer	AC60FRFZ00	1	
7	Brush Assembly	AC27FREZ00	KS(2)	
8	Bracket	AMC02D-V300U	2	
9	Screw	AMC40D-V300U	4	