

This Owner's Manual is provided and hosted by [Appliance Factory Parts](#).



PANASONIC MC-V5017 Owner's Manual

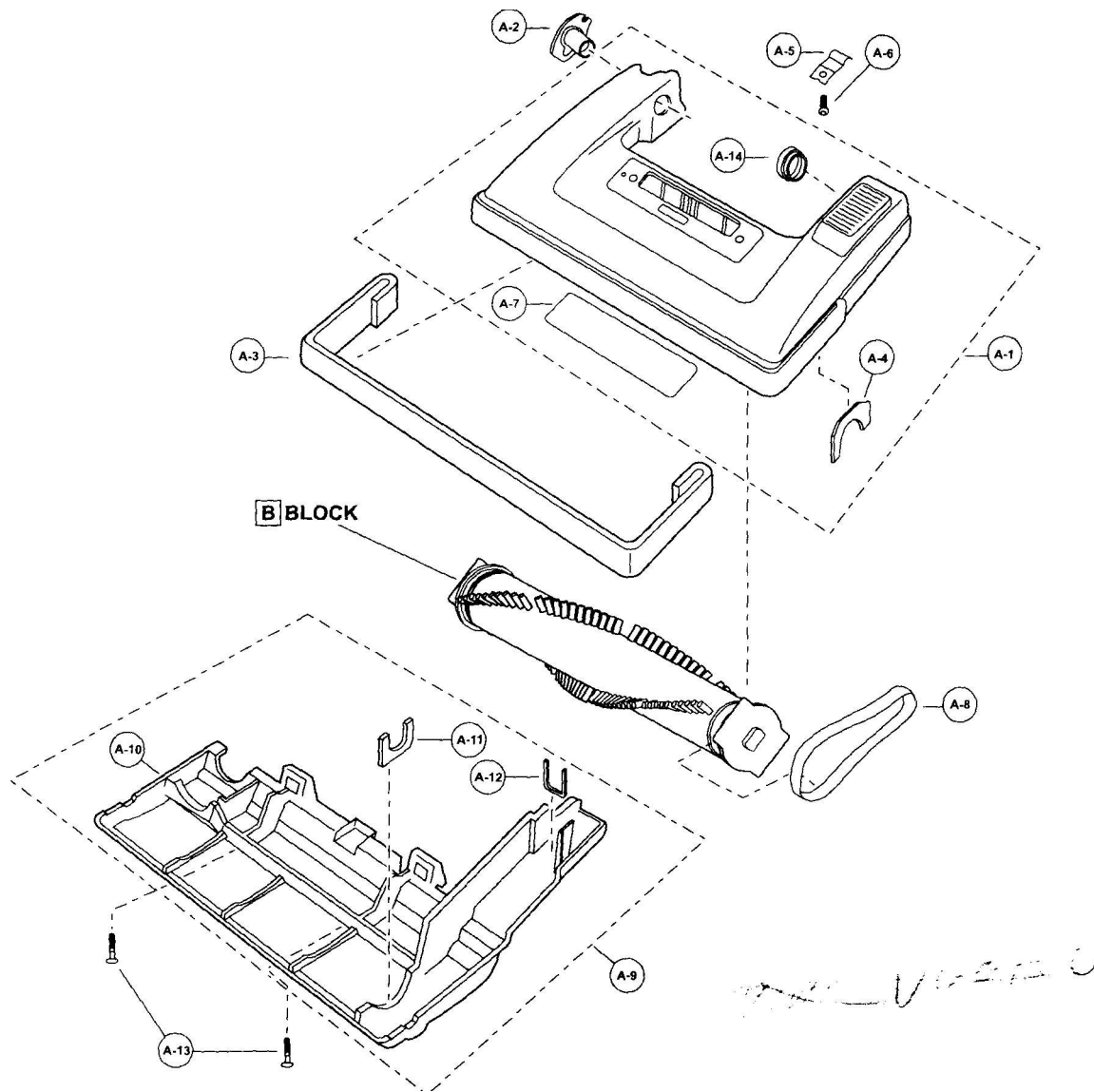
[Shop genuine replacement parts for PANASONIC
MC-V5017](#)



[Find Your PANASONIC Vacuum Cleaner Parts - Select From 605 Models](#)

----- Manual continues below -----

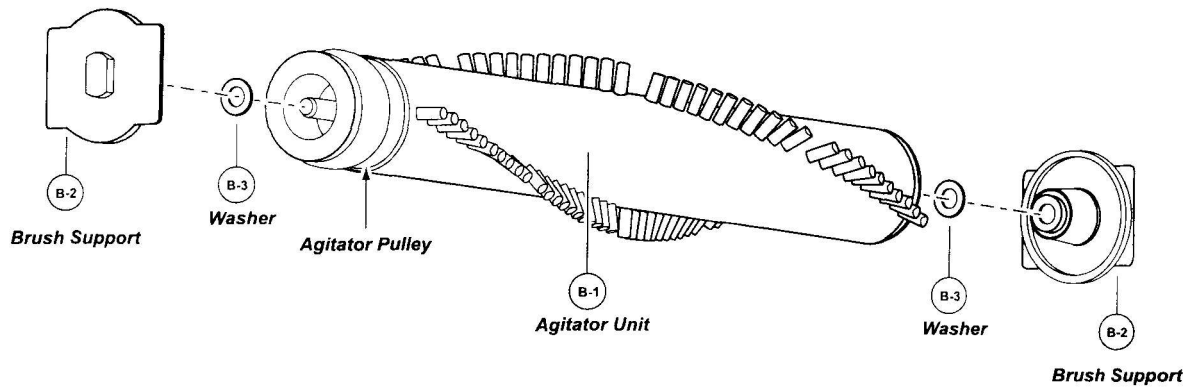
EXPLODED VIEW (NOZZLE HOUSING)... **A** BLOCK



PARTS LIST (NOZZLE HOUSING)... **A** BLOCK

Ref. No.	Part Name & Description	Part No.	Quantity	Remarks
A - 1	Nozzle Housing	AC01AARRZUU1	1	
A - 2	Shaft (Plastic)	AMC25S-V00	1	
A - 3	Furniture Guard	AC10AV0ZV06	1	
A - 4	Packing (Nozzle)	AMC81A-V00	1	74028
A - 5	Spring (Pedal)	AMC57A-V00	1	
A - 6	Screw (Pedal Spring)	AXTN4+16BFY	1	
A - 7	Top Mark	AC02TARRZU01	1	
A - 8	Belt	AC28SJPZ00	1	
A - 9	Lower Plate Assembly	AC91AAGMZV06	1	
A - 10	Lower Plate	AC27AAGMZV06	1	P-7 5022
A - 11	Packing (Lower Plate)	AMC75A-V00	1	
A - 12	Belt Cover (Rear)	AMC43S-V00	1	
A - 13	Screw (Lower Plate)	AC68AZAZ00	2	
A - 14	Plastic Holder	AMC78N-V00	1	

EXPLODED VIEW (AGITATOR ASSEMBLY)... B BLOCK



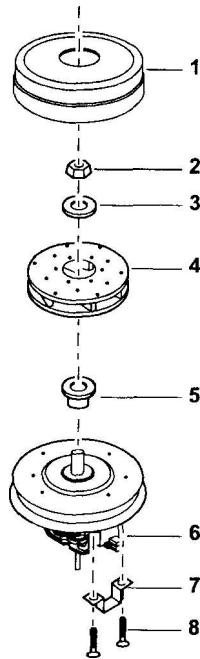
PARTS LIST (AGITATOR ASSEMBLY)... B BLOCK

Ref. No.	Part Name & Description	Part No.	Quantity	Remarks
B - 1	Agitator Unit	AC84RADTZ00	1	
B - 2	Brush Support	AC96DZSZ0U	2	
B - 3	Washer	AMC681-424	2	

• PARTS LIST (MOTOR HOUSING, MOTOR, HANDLE, AND BODY)... [C] BLOCK

Ref. No.	Part Name & Description	Part No.	Quantity	Remarks
C - 1	Dust Compartment Unit	AC40KJN9V06	1	Includes C-41 and C-42 Packing
C - 2	ON/OFF Switch	AMC98E-V000U	1	
C - 3	Cord Stopper	AMC62E-J20	1	
C - 4	Screw (Cord Stopper, Suction Inlet)	AXTN4+16BFY		
C - 5	Power Cord	AC97EADFZV06	1	
C - 6	Wire Connector	AMC-1CTCE23		
C - 7	Packing (Dust Container)	AC66KV01V06		
C - 8	Switch Cover	AC03EV06V06	1	
C - 9	Packing (Switch Cover)	AC73KV0ZV06	1	
C - 10	Screw (Switch Cover)	AXTN4+16BFY		
C - 11	Handle Screw	AMC73B-V00	1	
C - 12	Nut (Handle Screw)	AMP21B-170	1	
C - 13	Filter Supporter	AMC32K-V00	1	
C - 14	Secondary Filter (Foam)	AMC37K-V00	1	
C - 15	Wheel	AMC01C-V00U		
C - 16	Shaft (Wheel)	AC16CUSZ00	1	
C - 17	Stopper (Wheel)	AC74SUSZ00		
C - 18	Washer (Wheel)	AXWG6E115FY		
C - 19	Dust Bag (Type U6)	AC16KJYZ00	1	
C - 20	Suction Inlet	AC60HF74VU6	1	
C - 21	Cover (Suction Inlet)	AC02HF73VU6	1	
C - 22	Motor Case	AC09FJNZU01	1	
C - 23	Packing (Rear Cover)	AMC02L-V00	1	
C - 24	Packing (Motor Case)	AC19FJPZV06	1	
C - 25	Screw (Motor Case)	AXTN4+16BFY		
C - 26	Fan Motor Unit	AMC92F-V050U	1	
C - 27	Carbon Brush	AMC27F-AV00U	1 (Set)	
C - 28	Noise Suppressor	AMC99G-L310X	1	
C - 29	Motor Support (Front)	AMC02F-E00	1	
C - 30	Motor Support Rubber (Rear)	AMC03F-V00	1	
C - 31	Wire Cord	AMC37G-V020U	1	
C - 32	Handle	AMC64B-V2Z00	1	
C - 33	-Accord Hook Base	AC55EV0ZV06	1	
C - 34	Upper Cord Storage Hook	AC53EV0ZV06	1	<i>f - VI" A ' \</i>
C - 35	Spring (Cord Hook)	AMC76N-F70	1	
C - 36	Washer (Cord Storage Hook)	AMC58B-F70	1	<i>r • - , r</i>
C - 37 S>	Screw (Cord Storage Hook)	AC54BAHJZ00		
C - 38	Lower Cord Storage Hook	AC54EV0ZV06	1	<i>/ " ycbUV</i>
C - 39	Hose	AC34PV02V06	1	
C - 40	Wire Tie	AMC596-702	1	
C - 41	Packing (Right)	AC39AYUZV00	1	
C - 42	Packing (Left)	AC40AYUZV00	1	
C - 43	Dust Cover	AC60KARRZUU1	1	
C - 44	Protector Filter	AMC33K-V000U	1	
C - 45	Protector Supporter	AMC18M-D20	1	
C - 46	Protector	AMC69K-D20	1	
C - 47	Protector Spring	AMC70K-V00	1	
C - 48	Protector Case	AMC68K-D20	1	
C - 49	Insulator Packing (Handle Screw)	AC61LAGMZ00	1	

EXPLODED VIEW (MOTOR FAN ASSEMBLY)



MOTOR REPAIR PARTS

The fan assembly parts are available for repairing fan assemblies.

This should reduce the cost of service for the motor assembly.

Correct procedures are explained later in this **Service Manual**.

If the Motor is defective then it must be replaced as a complete unit. See the **C Block** for correct part number.

PARTS LIST (MOTOR FAN ASSEMBLY)

Ref. No.	Part Name & Description	Part No.	Quantity	Remarks
1	Fan Case	AMC53F-AV00U	1	
2	Nut	AMC33F-AC00U	1	
3	Washer (a)	AMC62F-AV00U	1	
4	Fan	AMC98F-AV00U	1	
5	Spacer	AMC60F-AV00U	1	
6	Brush Assembly	AMC27F-AV00U	1 (Set)	
7	Bracket	AMC02D-V300U	2	
8	Screws	AMC40D-V300U	4	