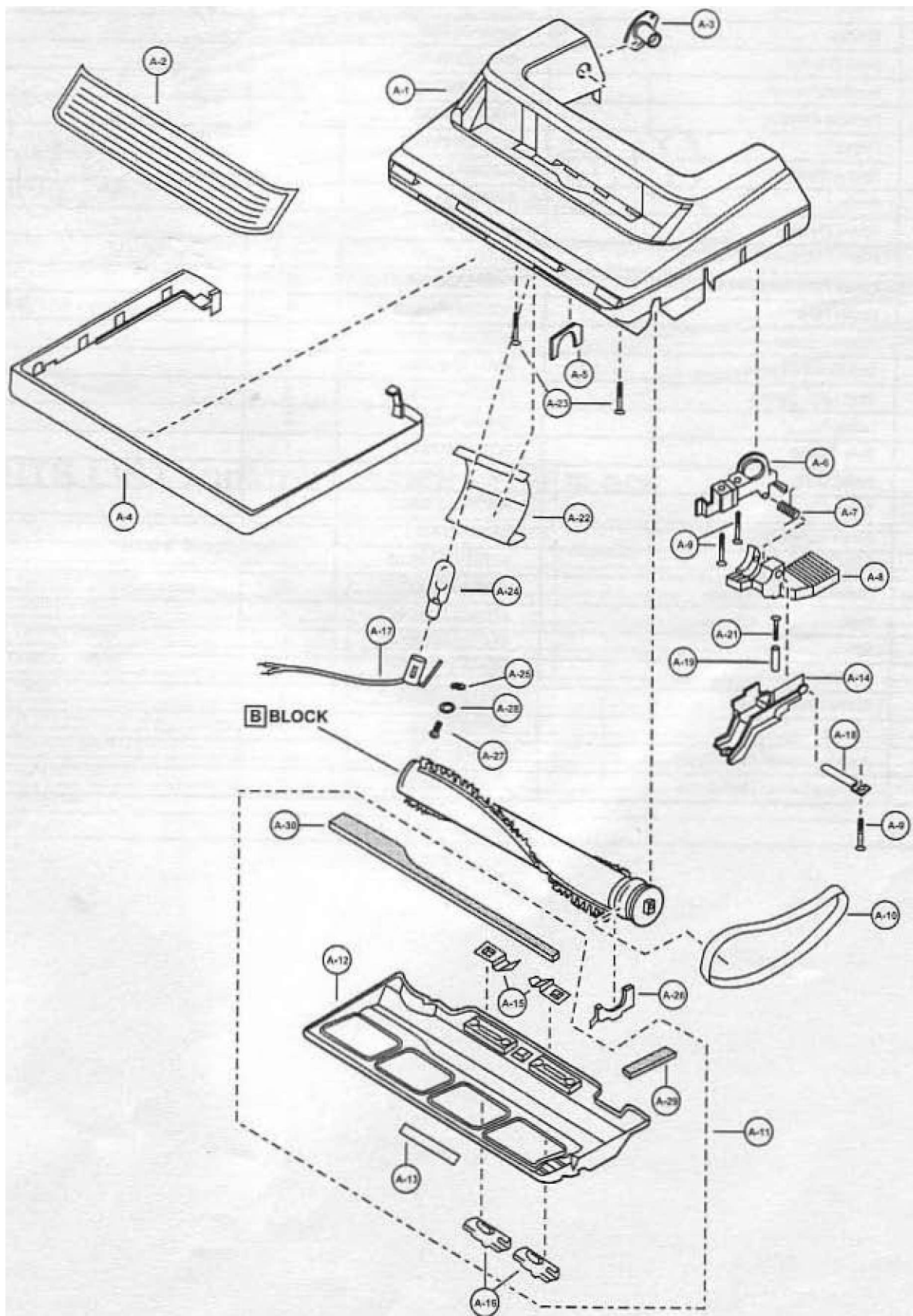


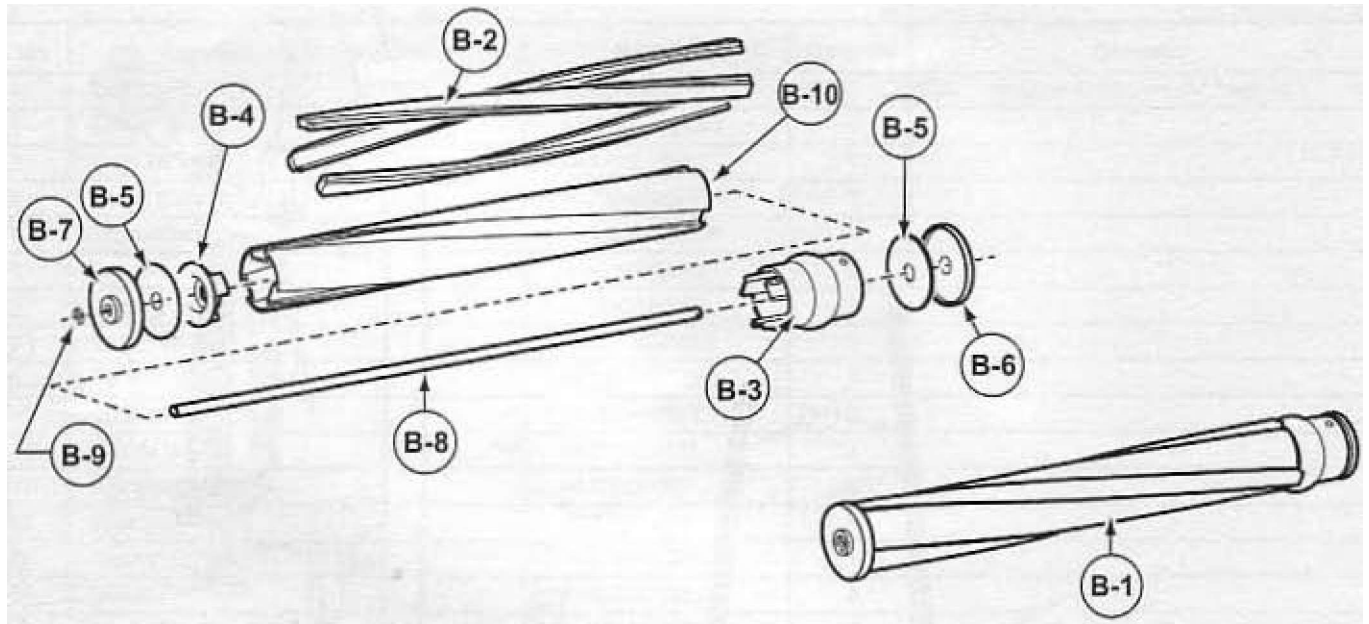
# EXPLODED VIEW (NOZZLE HOUSING)... [A] BLOCK



# ■ PARTS LIST (NOZZLE HOUSING)... [A] BLOCK

Rel. No.	Part Name t Description	Part No.	Quant ily	l	Remarks
A - 1	Housing	ACOIABYZZMUS	1		
A - 2	Window	AKK?3IH'2XD	1	r	
A - 3	Shaft i Piastre)	AWC255-VOO	t		
A - 4	F'j'mture Guard	ACiOASvzv0;1	1		
A - 5	PSChlr>g iNazzlc)	AMCS1A-VOP	t		
A - 6	Fiame	AMC43A-2VD	1		
A - 7	SpnrtQ {Pedal,	AUC5SA-2VO	1		
A - &	P«fa!	APJC47A-2VOLF	1		
A - 9	Scfwy (Frame;	AX7N4+16BFY			
A - 10	Belt	AC2&SJFZOO	t		
A - 11	Lr,vi-1 Plate Assembly	AC91AADG2GO	1		
A - 12	Lovttf Plate	AC27AAD6ZOO	1		Induces ft-13 Label
A - 13	Warning Label	ACOTZADFZOO	1		
A - 14	Belt Cov^r (Rea'i	AUCMS-2V0W	t		
A - 1 s	Stop Latch 5pring	AC7DMYUZOO	2		
A - 1 S	Latch	AMC66N-V30K	2		
A - 17	Bulb Socket	<b>AC93HURZOO</b>	1		
A - i e	Pedal Shaft	ANiC5tA-2VO	1		
A - 19	Spacer	AWCT^S-ZtOOG	1		
<b>A-£1</b>	Scro^ (5Mcerj	AXTNJ+2SBFY	1		
A - 22	Roliactsr	ACS4HURZWOO	t		
A - 23	Sctflw (Noiile)	AMcasArvafI			
A - 2 J	Bulb	AC2BSADFZOD	1		
A - 25	Spring fWashen	AMC-XWA5BFY	1		
A - 26	Agnntor Holder	AMCKA-2VO	1		
A - 27	Sctsw (Bulb Socfct)	AJCTN4+10BFV	1		
A - ^ e	Wqshcr	AMG36B-F7O	1		
A - 29	PacLmg flower Plate Rig lit i	AMCMA-2V®	1		
A - 30	P*dung (Lower PJate Batki	AWC74A-2VO	1		

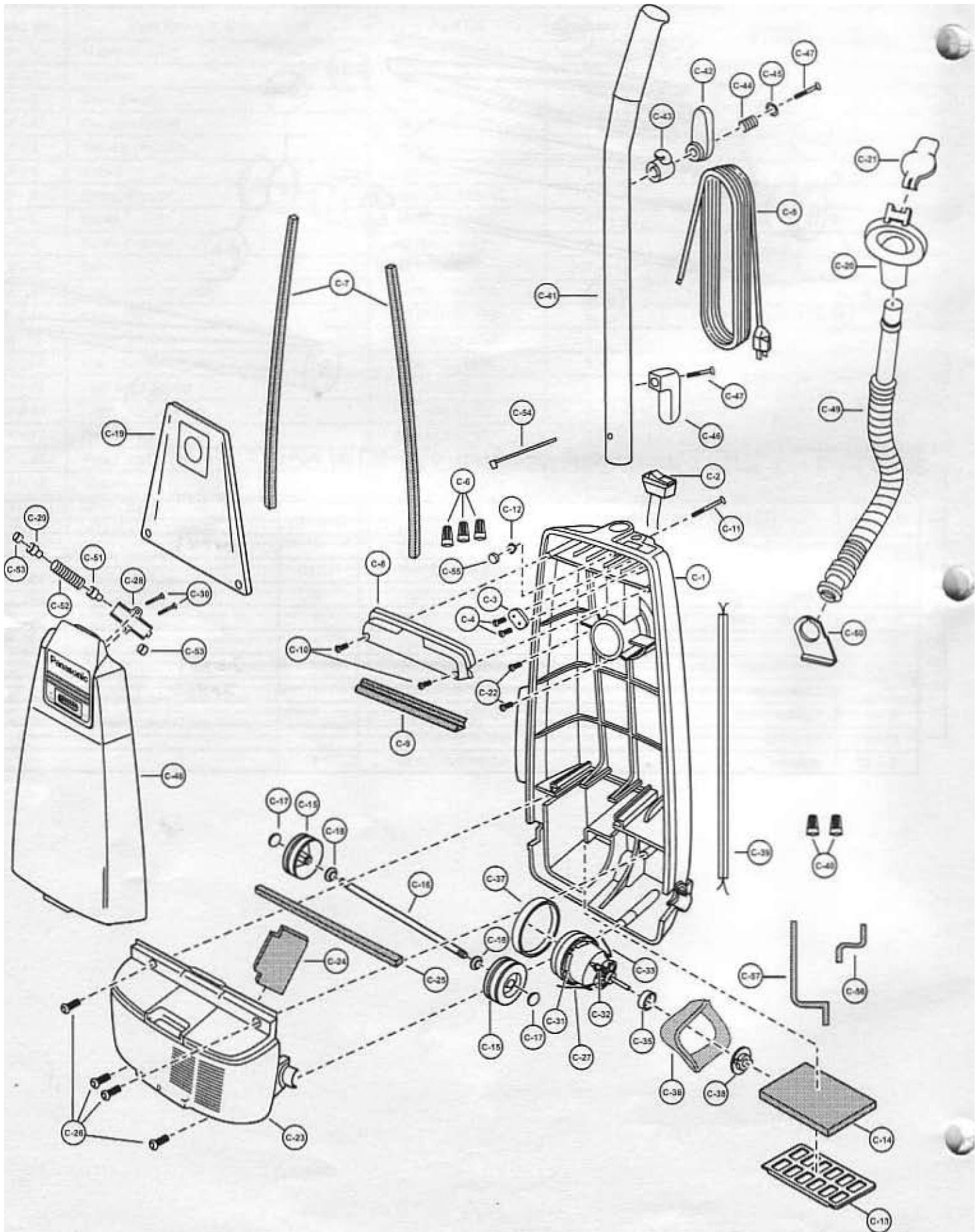
## EXPLODED VIEW (AGITATOR ASSEMBLY)... [B] BLOCK



## PARTS LIST (AGITATOR ASSEMBLY)... [B] BLOCK

Ref. No.	Part Name / Description	Part No.	Quantity	Remarks
B - 1	Agitator Assembly	AC92S8YYZ000	1	
B - 2	Brush (3 Pes.)	ACSSHBVVZ000	3 (Sen	
B - 3	Brush Support (Left)	AC25SBYYZ000	1	
B - 4	Brush Support (Right)	ACJ1SSVNZ000	1	
B - 5	Filter	AOIKBVNZ000	2	
B - 6	Brush Support (Flight)	AG97DBVNZ000	1	
B - 7	Brush Support (Left)	AC^OBV^J000	1	
B - 8	Agitator Shaft	AC57RBYV2000	1	
B - 9	Brush Support (Right)	ACZ3FSVN2COO	1	
B - 10	Brush Support	ACsfrRSWIZDOO	1	

**EXPLODED VIEW (BODY, MOTOR HOUSING, AND MOTOR)... BLOCK C**



# PARTS LIST (MOTOR HOUSING, MOTOR, HANDLE, AND BODY)... BLOCK

Ref. No.	Part Name & Description	Part No.	Quantity	Remarks
C - 1	Dust Compartment	AC40KARSZV07	1	1505 Includes C-56 and C-57 Packing
C - 2	On-Off Switch	AMC98E-V010U	1	
C - 3	Cord Stopper	AMC62E-J20	1	
C - 4	Screw (Cord Stopper)	AXTN4+16BFY	2	
C - 5	Power Cord	AC97EAAEZV06	1	
C - 6	Wire Connector	AMC-1CTCE23	3	
C - 7	Packing (Dust Container)	AC66KV01V06	2	
C - 8	Switch Cover	AC03EV07V06	1	
C - 9	Packing (Switch Cover)	AC73KV0ZV06	1	
C - 10	Screw (Switch Cover)	AXTN4+16BFY	2	
C - 11	Handle Screw	AMC73B-V00	1	
C - 12	Nut (Handle Screw)	AMP21B-170	1	
C - 13	Filter Supporter	AMC32K-V00	1	
C - 14	Secondary Filter (HEPA)	AC37KAAEZ00	1	18020
C - 15	Wheel	AMC01C-V00U	2	
C - 16	Shaft (Wheel)	AC16CUSZ00	1	
C - 17	Stopper (Wheel)	AC74SUSZ00	2	
C - 18	Washer	AXWG6E115FY	2	
C - 19	Dust Bag (Type U6)	AC16KJYZ00	1	14/M
C - 20	Suction Inlet	AC60HF74VU6	1	
C - 21	Cover (Suction Inlet)	AMC02H-F70E	1	
C - 22	Screw (Suction Inlet)	AXTN4+16BFY	2	
C - 23	Motor Case	AC09FARSZV07	1	
C - 24	Packing (Rear Cover)	AMC02L-V00	1	
C - 25	Packing (Motor Case)	AC19FARSZV06	1	
C - 26	Screw (Motor Case)	AXTN4+20BFY	4	
C - 27	Lead Wire(Motor Thermal Protector)	AC98WAUDZ00	1	
C - 28	Body(Indicator)	AC15MVZ00	1	
C - 29	Cap(Indicator)	AMC17M-V20	1	
C - 30	Screw(Indicator)	AXTN4+10BFY	2	
C - 31	Fan Motor Unit	AC92FARSZ00	1	60159
C - 32	Carbon Brush	AC69RAKEZ00	1 (Set)	
C - 33	Lead Wire (Motor)	AC38GARTZ00	1	
C - 34	Screw, Brush (Not Illustrated)	AC68AAKEZ00	2	
C - 35	Ring Spacer	AC53MAKEZ00	1	
C - 36	Noise Suppressor	AC99GAMMZ00	1	
C - 37	Motor Support (Front)	AMC02F-E00	1	
C - 38	Motor Support Rubber (Rear)	AMC03F-V00	1	
C - 39	Wire Cord	AMC37G-V200U	1	
C - 40	Wire Connector	AMC-1CTCE23	2	
C - 41	Handle	AMC64B-V2Z00	1	
C - 42	Upper Cord Storage Hook	AC53EV0ZV07	1	
C - 43	Cord Storage Base	AC55EV0ZV07	1	
C - 44	Spring (Cord Hook)	AMC76N-F70	1	
C - 45	Washer (Cord Storage Hook)	AMC58B-F70	1	
C - 46	Lower Cord Storage Hook	AC54EV0ZV07	1	
C - 47	Screw (Cord Storage Hook)	AXTN+30BFY	2	
C - 48	Dust Cover	AC60KBYZZMU9	1	
C - 49	Hose	AC34PV02V06	1	73007