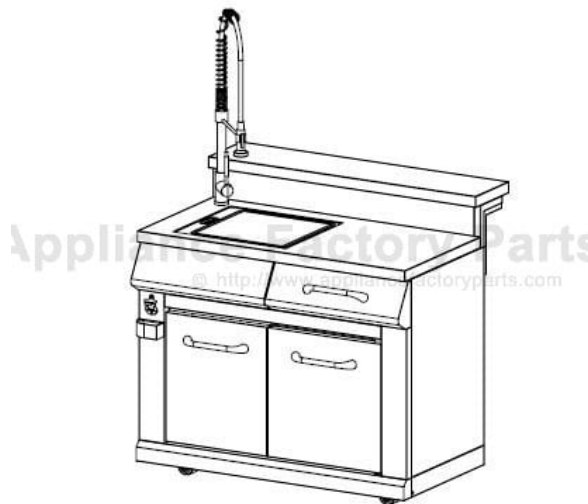


This Owner's Manual is provided and hosted by [Appliance Factory Parts](http://www.appliancefactoryparts.com).



Members Mark B08SMG_3 Owner's Manual

[Shop genuine replacement parts for Members Mark
B08SMG 3](#)



[Find Your Members Mark Grill Parts - Select From 133 Models](#)

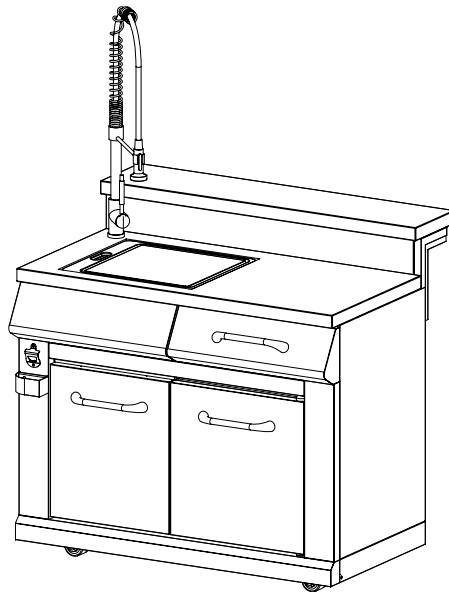
----- Manual continues below -----



Member's Mark®

Grill Guide

Party Cart Module Model B08SMG-3



Stop!

Missing a part? No need to go back to SAM'S CLUB!

SAM'S CLUB does not stock parts for this item at the Club, but our team is here to help you. If you need parts, whether they are missing or damaged, please call our Toll Free Help Line **1-800-933-0527**.
Call us 8:30 AM to 5:00 PM Central Time, Monday through Friday.



Member's Mark®

OUR PROMISE

Providing quality products that exceed your expectations is our commitment. The Member's Mark name stands for innovative products we believe offer a better value than the leading national brands. You'll agree, or we'll refund your money.

For questions or comments regarding this product, e-mail us anytime at member.response@membersmark.com
member.response@membersmark.com

Preassembly Information

1. Read through the entire Assembly Instructions before you begin.
2. Choose an area large enough to comfortably lay out all parts and hardware with enough room to easily maneuver.
3. Remove all components from the carton and use the Part and Hardware Diagrams to ensure all items are included and free of damage. If necessary, contact Customer Service at the number above to order any missing or replacement part before assembly.

▲ WARNING

This product contains one or more chemicals known to the State of California to cause cancer and birth defects or other reproductive harm.

TO THE INSTALLER OR PERSON ASSEMBLYING THIS CART:

Leave this Guide with the consumer.

TO THE CONSUMER:

Retain this Guide for future reference.

Limited Warranty

The manufacturer warrants to the **original consumer-purchaser** that this product shall be free from defects in workmanship and materials under normal and reasonable use when assembled and operated according to this Instruction Manual from date of purchase as follows:

One Year except as noted below

Refrigerator Warranty:

3 Years for Compressor

1 Year for other parts

The manufacturer will, at its option, refinish or replace any product or part found to be defective during the limited warranty period. There may be a shipping charge. The manufacturer may require you to return the part(s) claimed to be defective for its inspection, freight or postage prepaid. Contact our Customer Support Center as shown below before returning any part(s).

The manufacturer will require reasonable proof of purchase. **We strongly recommend you keep your sales receipt** and register your Party Cart. You can attach your receipt to this manual. This limited warranty does not cover the cost of any inconvenience or property damage due to failure of the product and does not cover damage due to misuse, abuse, alteration, improper or

failure to perform normal and routine maintenance, discoloration, scratches, rust, accident, damage arising out of transportation of the product, or normal wear and tear. This limited warranty will not apply to any Party Cart used for commercial use.

This limited warranty is the sole warranty given by the manufacturer and is in lieu of all other warranties; express or implied, including implied warranty of merchantability or fitness for a particular purpose. Neither manufacturer dealers nor the retail establishment selling this product have any authority to make any warranties or to promise remedies in addition to or inconsistent with those stated above.

This limited warranty applies only to products sold at retail, and is not transferable.

The manufacturer's maximum liability, in any event, shall not exceed the purchase price of the product paid by the original consumer-purchaser. Some states do not allow the exclusion or limitation of incidental or consequential damages. Therefore, the above limitations or exclusions may not apply to you. This warranty gives you specific legal rights and may also have other rights, which vary from state to state.

Customer Support Center

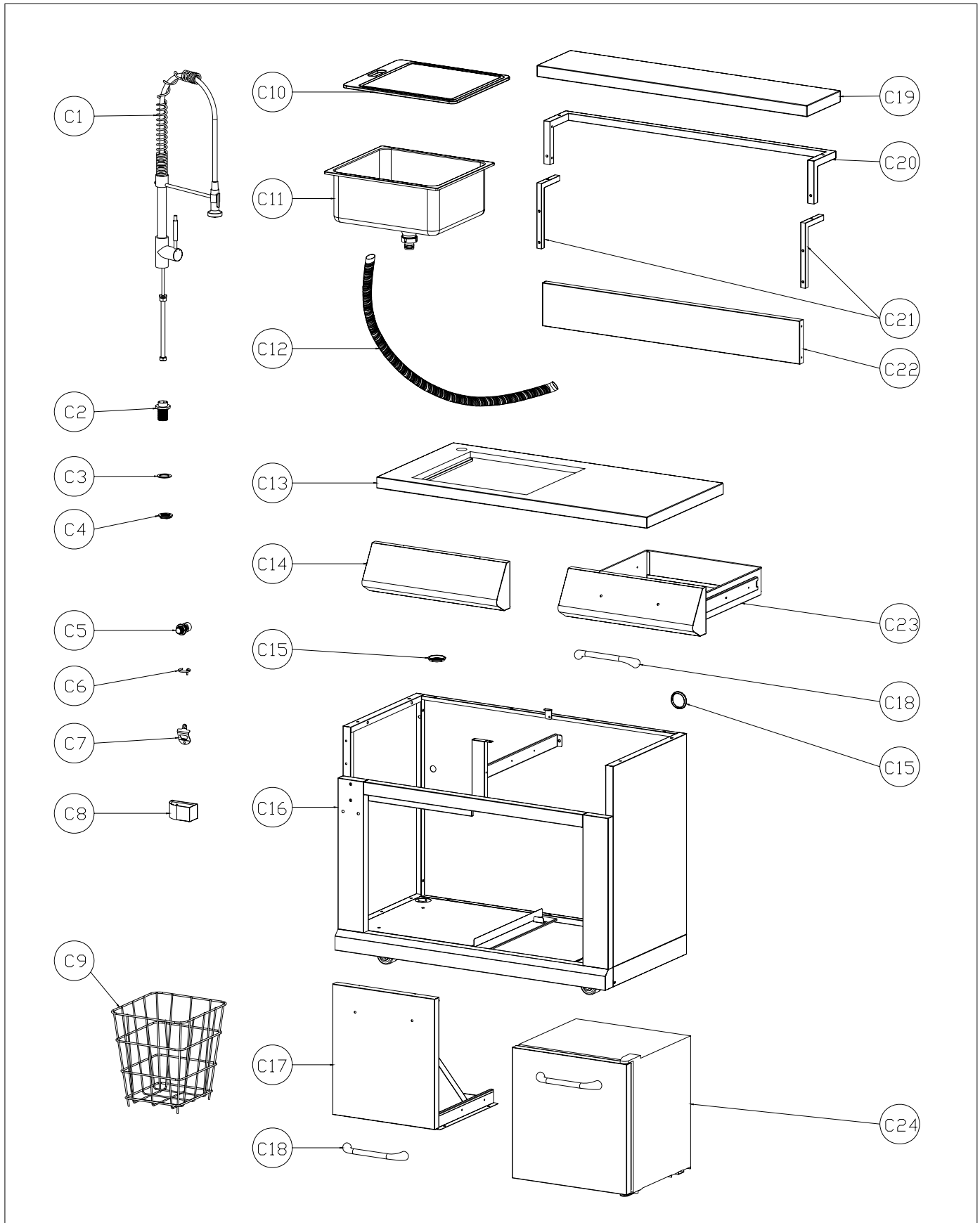
Thanks for purchasing our Member's Mark ® Modular Grill. We're here to help you maximize your enjoyment and appreciation of your new Party Cart. Please don't hesitate to contact us should you have any questions regarding assembly, performance, warranty, or accessories. We have a full line of replacement parts available. Please have your model number ready before you contact us. We're here to serve You!

- If you need assistance or to order parts: **Call 1-800-933-0527, send a FAX to 1-847-252-1001, or email us at help@omahagrills.com.**
- Business hours: **Monday through Friday; 8:30AM-5:00PM Central Time.**
- Visit us on the web at: www.omahagrills.com

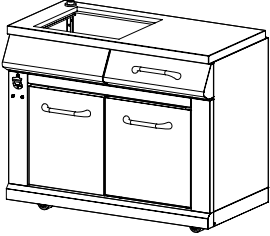

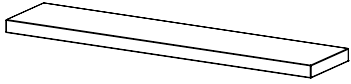
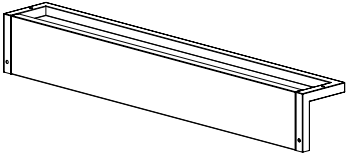
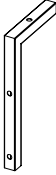
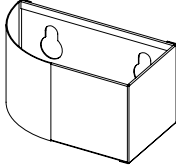
Detail Parts List for Model B08SMG-3

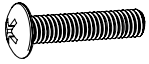

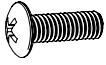
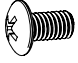
C1 Faucet Assembly	C13 Granite Countertop
C2 Faucet Support Base	C14 Sink Front Panel
C3 Faucet Washer	C15 Drain Hose Guide
C4 Faucet Support Base Nut	C16 Cabinet Assembly
C5 Brass Male Fitting	C17 Waste Basket Drawer
C6 Drain Hose Support Ring	C18 Waste Basket Drawer Handle
C7 Bottle Opener	C19 Bar Counter
C8 Cap Catcher	C20 Bar Counter Support
C9 Waste Basket	C21 Bar Counter Bracket
C10 Cutting Board	C22 Bar Counter Panel
C11 Sink Assembly	C23 Top Drawer Assembly
C12 Drain Hose	C24 Fridge Assembly

Parts Diagram for Model B08SMG-3



B08SMG-3 Assembly Parts List

Parts List		
<p>1. Party Cart Assembly....1PC</p> 	<p>2. Faucet Assembly....1PC</p> 	<p>3. Bar Counter1PC</p> 
<p>4. Bar Counter Support Assembly</p> 	<p>5. Bar Counter Bracket2PCS</p> 	<p>6. Cap Catcher....1PC</p> 

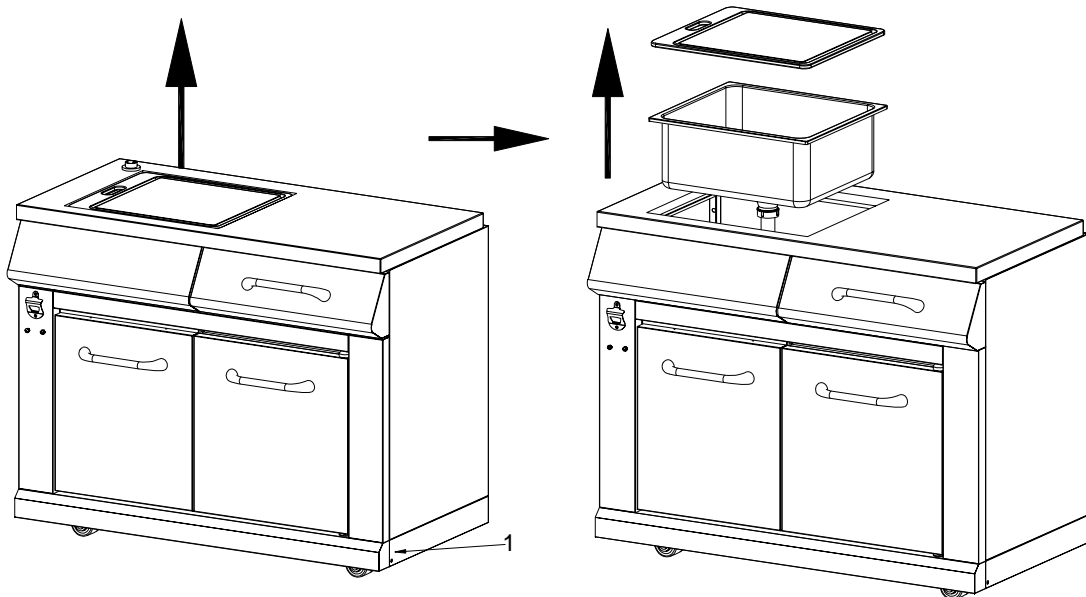
Assembly Hardware List						
A		Phillips Head Bolt M6*52	4	D		1
B		Phillips Head Bolt M6*25	2			
C		Phillips Head Bolt M6*10	4			

⚠ WARNING

Always wear protective gloves when assembling your Cart.

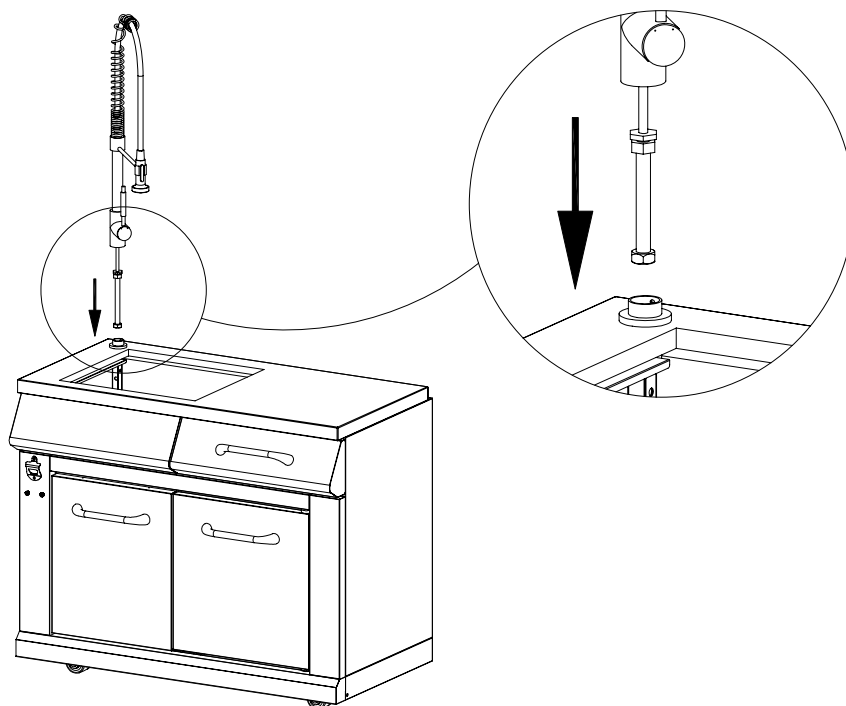
STEP 1 –

Lift out the Cutting Board and Sink from the Cabinet of the Party Cart.



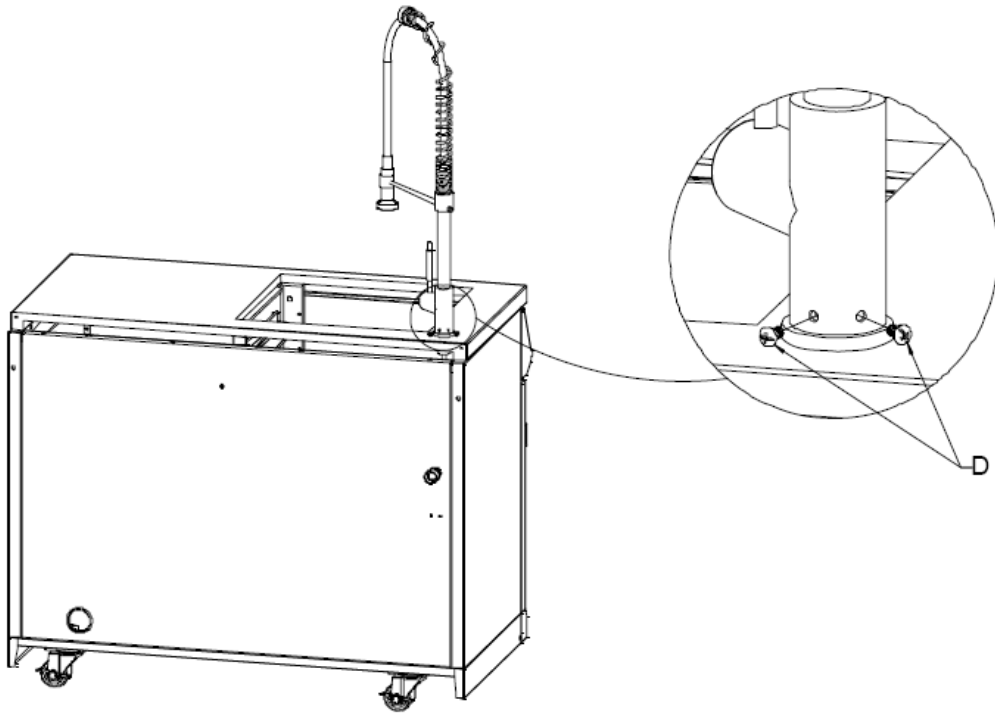
STEP 2 –

Insert the Faucet Assembly (2) into the Granite Countertop through the Faucet Support Base.



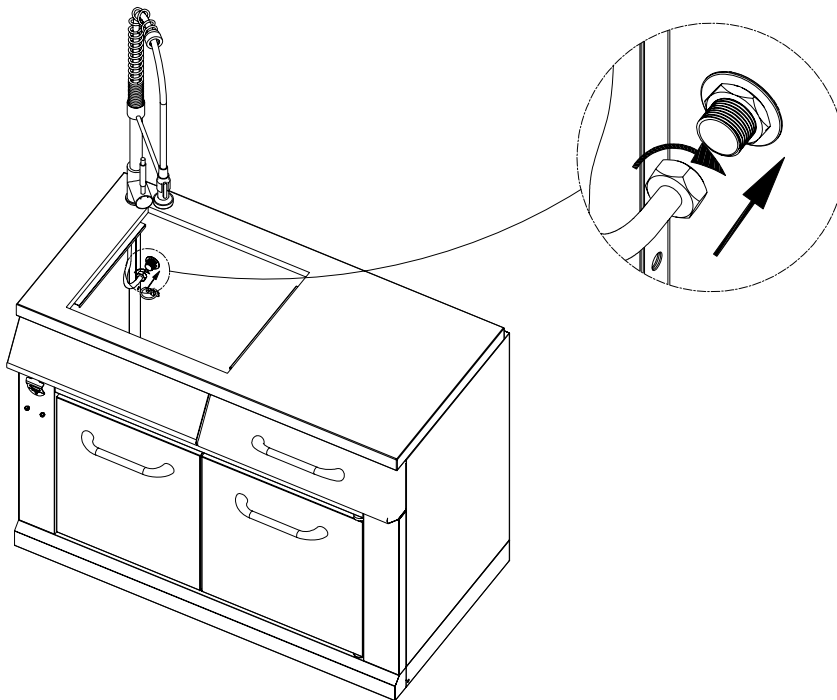
STEP 3 –

Secure the Faucet Assembly to the Faucet Support Base using the screwdriver and 2 Bolts that are packed with the Faucet.



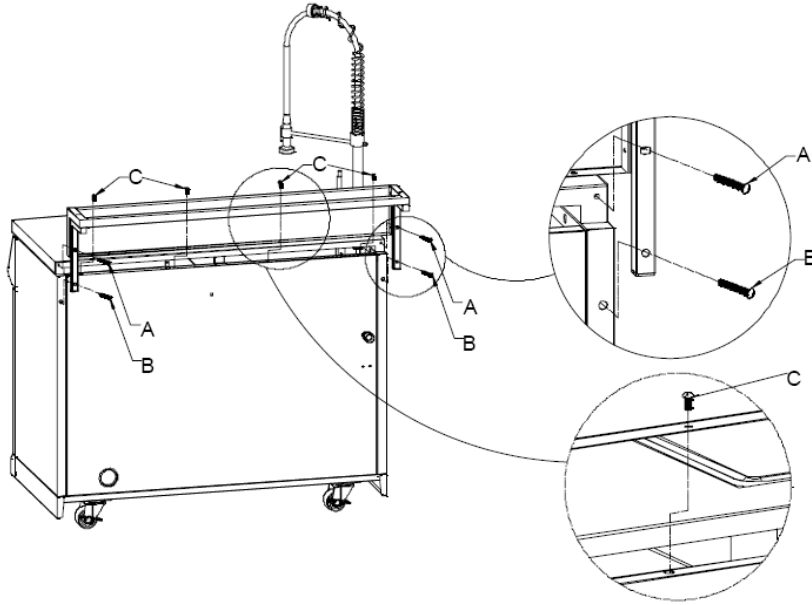
STEP 4 –

Secure the lower end of the Faucet Hose to the Brass Male Fitting in the back of the Cabinet.



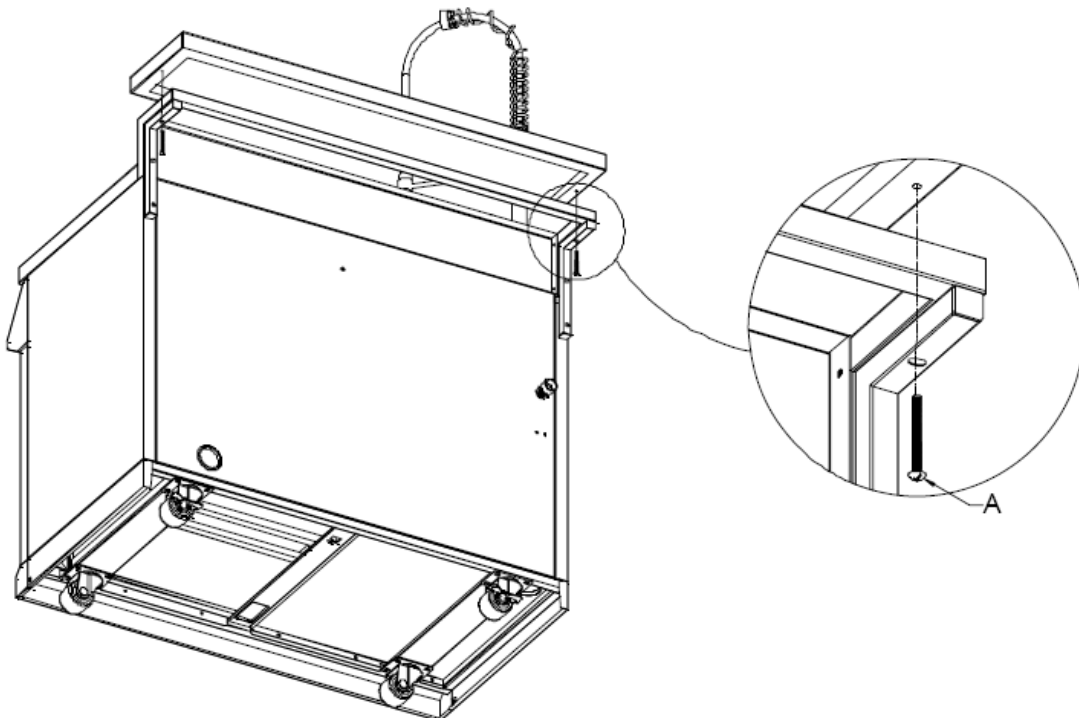
STEP 5 –

- 5.1 Use 2pcs M6x52 (A) bolts through the upper holes of the Bar Counter Support Assembly (4) to attach it to the Granite Countertop as shown.
- 5.2 Use 2pcs M6x25 (B) bolts through the lower holes of the Bar Counter Support Assembly to attach it to the back of the Cabinet Back Panel.
- 5.3 Use 4pcs M6x10 (C) bolts to attach the Bar Counter Support Assembly to the top of the Cabinet Back Panel as shown.



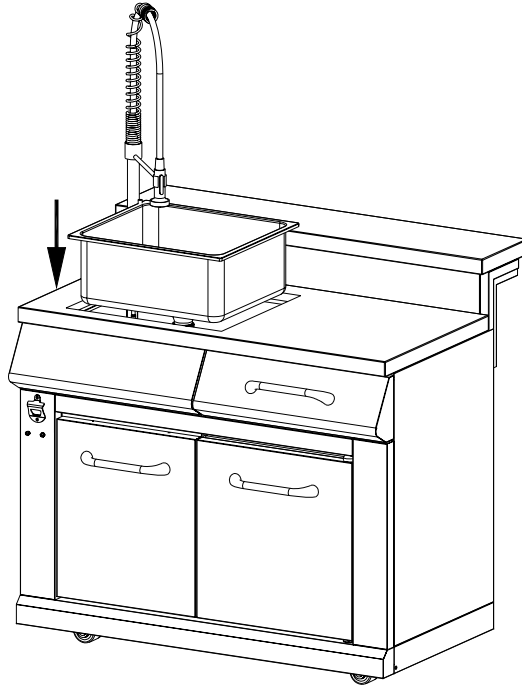
STEP 6 –

Use 2pcs bolts M6x52 (A) to attach the Bar Counter (3) to the Bar Counter Support Assembly.



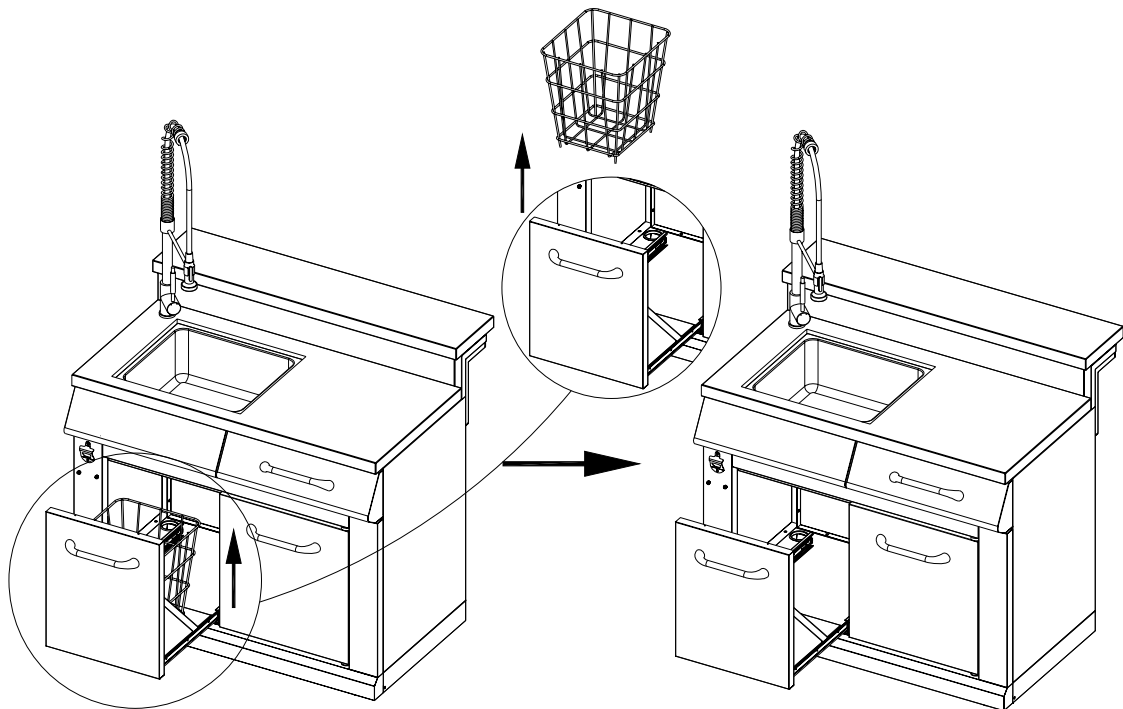
STEP 7 –

Insert the Sink back into the Cabinet.



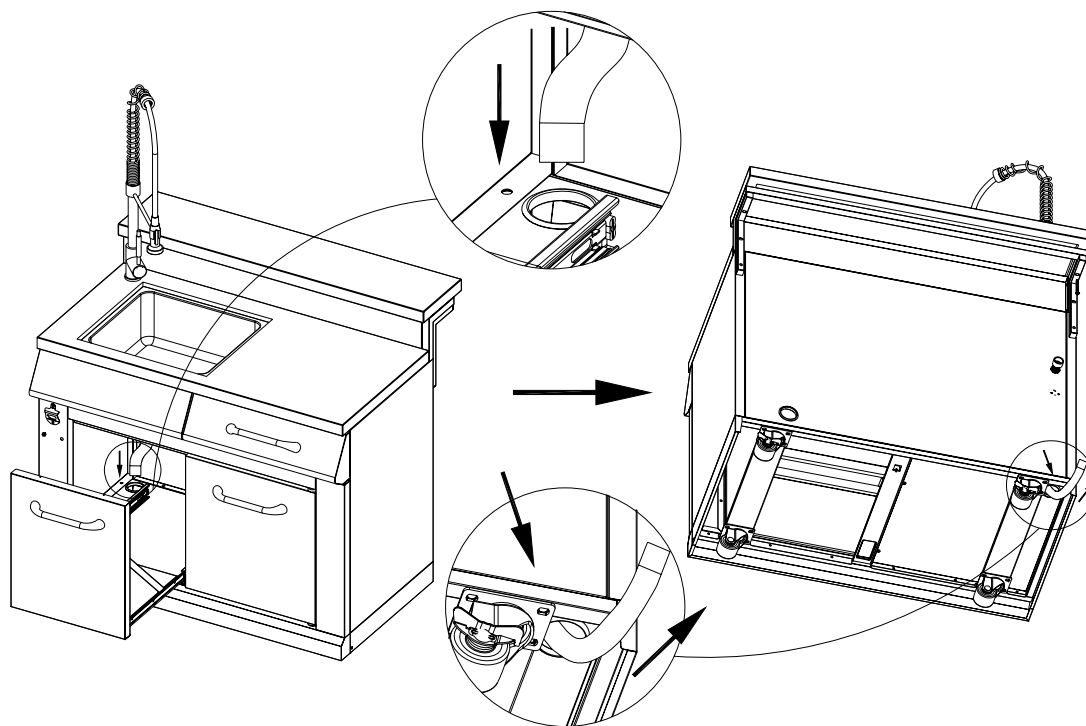
STEP 8 –

Pull out of the Waste Basket Drawer and take out the Waste Basket.



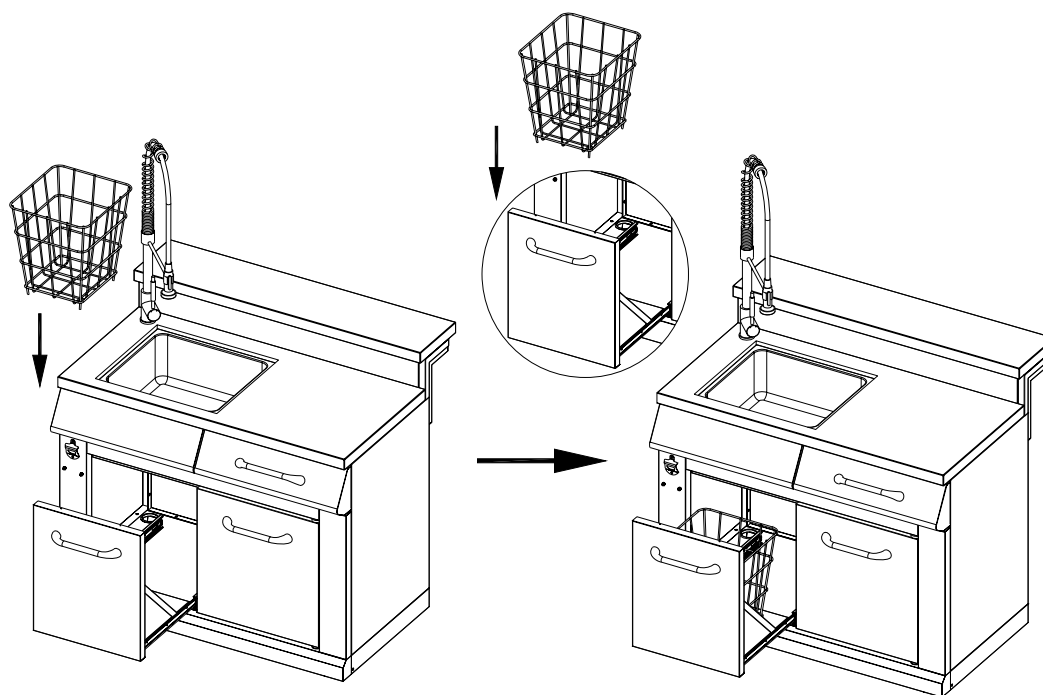
STEP 9 –

Extend the Drain Hose attached to the bottom of your Sink out through the hole in the Cabinet Bottom Panel. Then pull the Drain Hose out through the Bottom Panel of the Cabinet as shown.



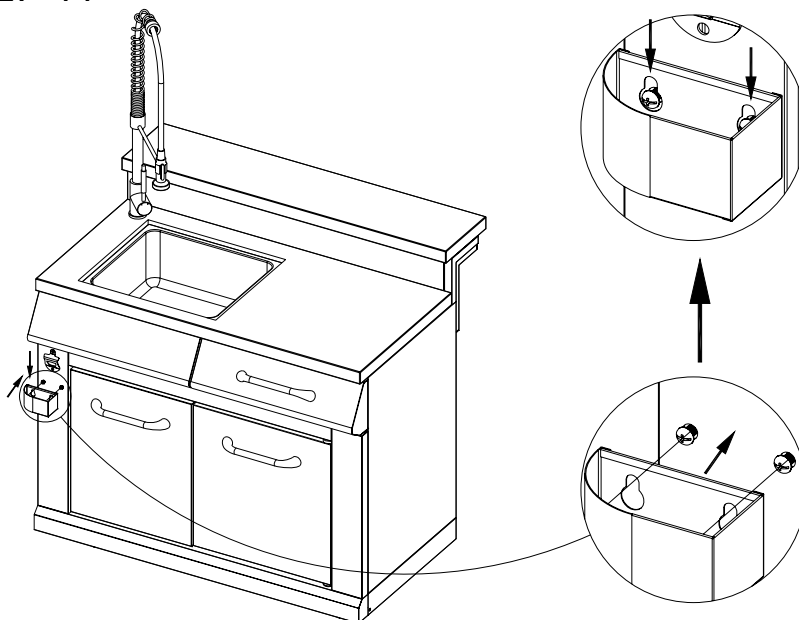
STEP 10-

Replace the Waste Basket into the Waste Basket Drawer as shown.



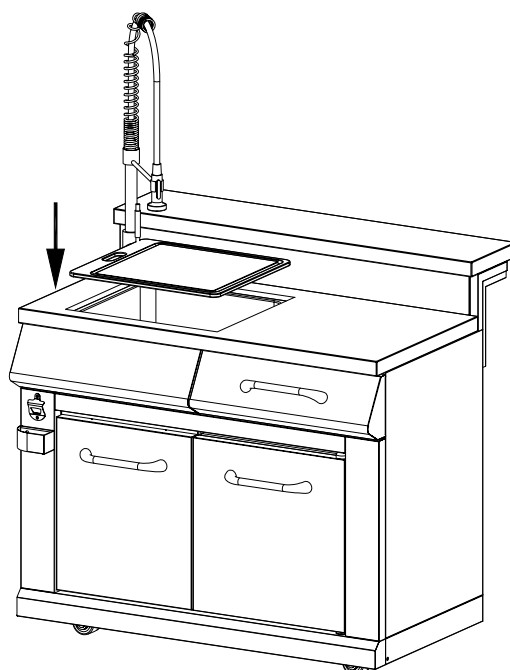
STEP 11-

Loosen the bolts located along the top of the Cabinet Front Panel. Attach the Cap Catcher as shown. Retighten the bolts.



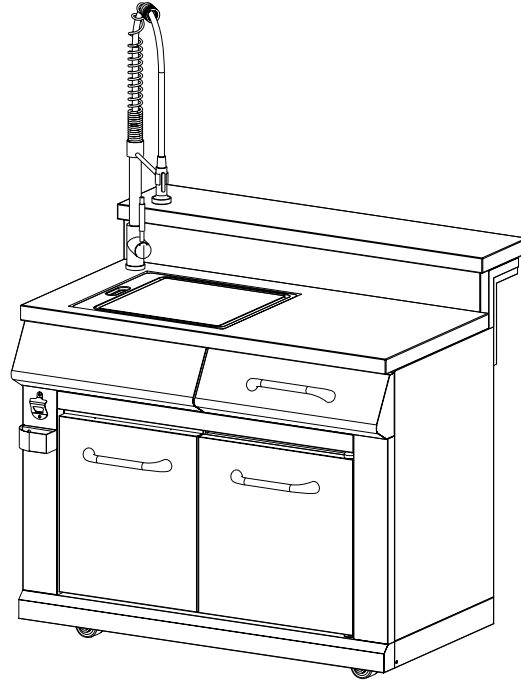
STEP 12-

Place the Cutting Board back over the Sink.



STEP 13-

Remove any additional labels or packing material from the Party Cart Module.
Congratulations! Your Party Cart Module is now assembled and ready for use.



Party Cart Use and Care Information

Water Information

We recommend using a marine and/or camping hose to run water to the sink. These hoses are drinking water safe and use nickel plated brass couplings for additional safety.

Stainless Steel Care

- Wash with a mild dish soap and warm water. Clean and polish with a stainless steel cleaner. Always polish in the direction of the grain.
- Do not allow dirt and grease to accumulate.
- Never use steel wool as it will scratch the surface. Do not use abrasive cleaners and scrubbers.
- Keep away from these substances which can damage stainless steel surfaces: pool chemicals, lawn fertilizer, ice melting salt, sea or salt water, urine, bird droppings, and tree sap. Immediately wash and dry should one or more come in contact with your Party Cart.

Caster Use

Ensure your Party Cart is located on a level surface.

Lock the locking casters by pressing or turning the locking lever on the casters counter clockwise before use. Unlock by turning or pressing the locking lever on the casters clockwise.

