

Repair Parts List

MODEL NUMBER

A9200

WASHER

When requesting service or ordering parts, always provide the following information:

- Product Type
- Part Number
- Model Number
- Part Description

MAYTAG®

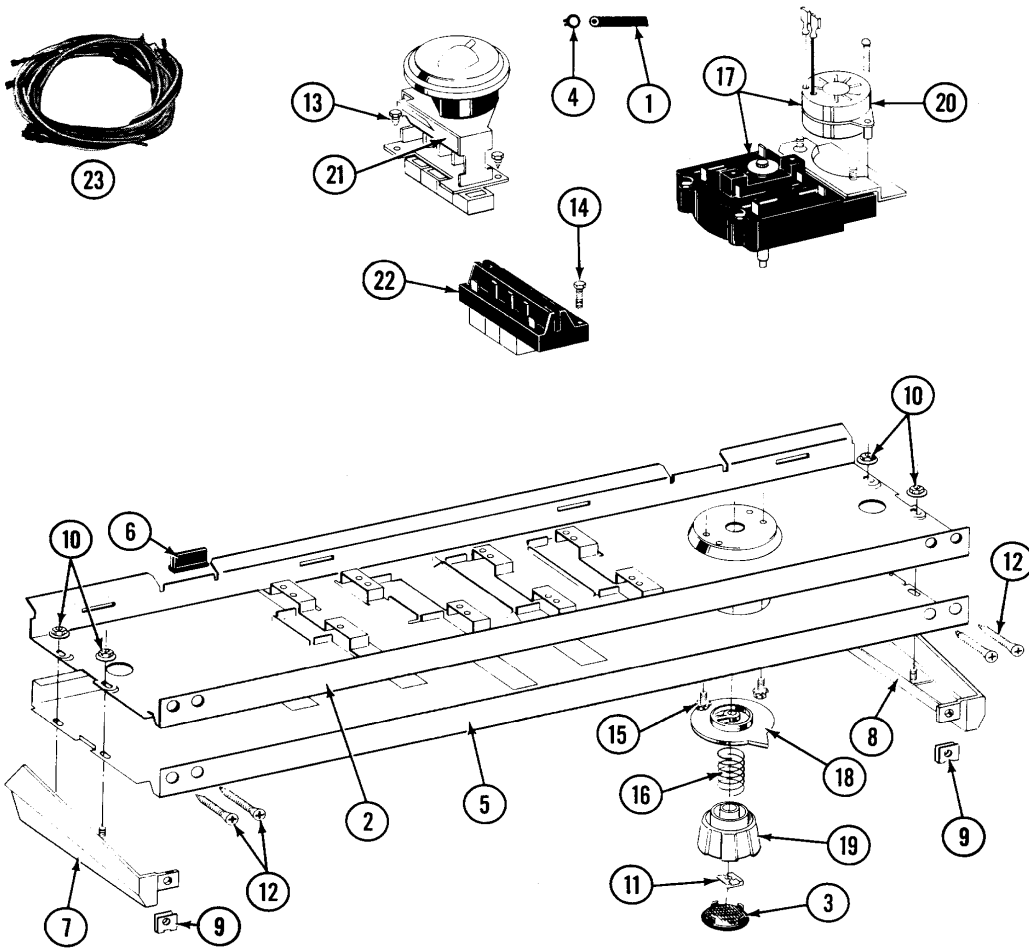
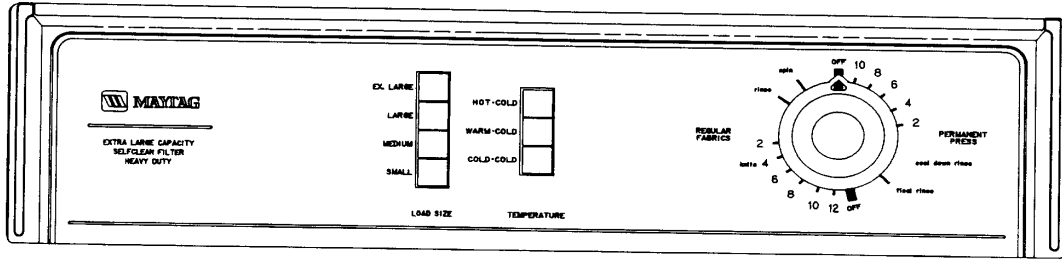
©2005 Maytag Services

Section: CONTROL PANEL

Model: A9200

SECTION: CONTROL PANEL

MODEL: A9200



Issue Date: 4/90

Section: CONTROL PANEL

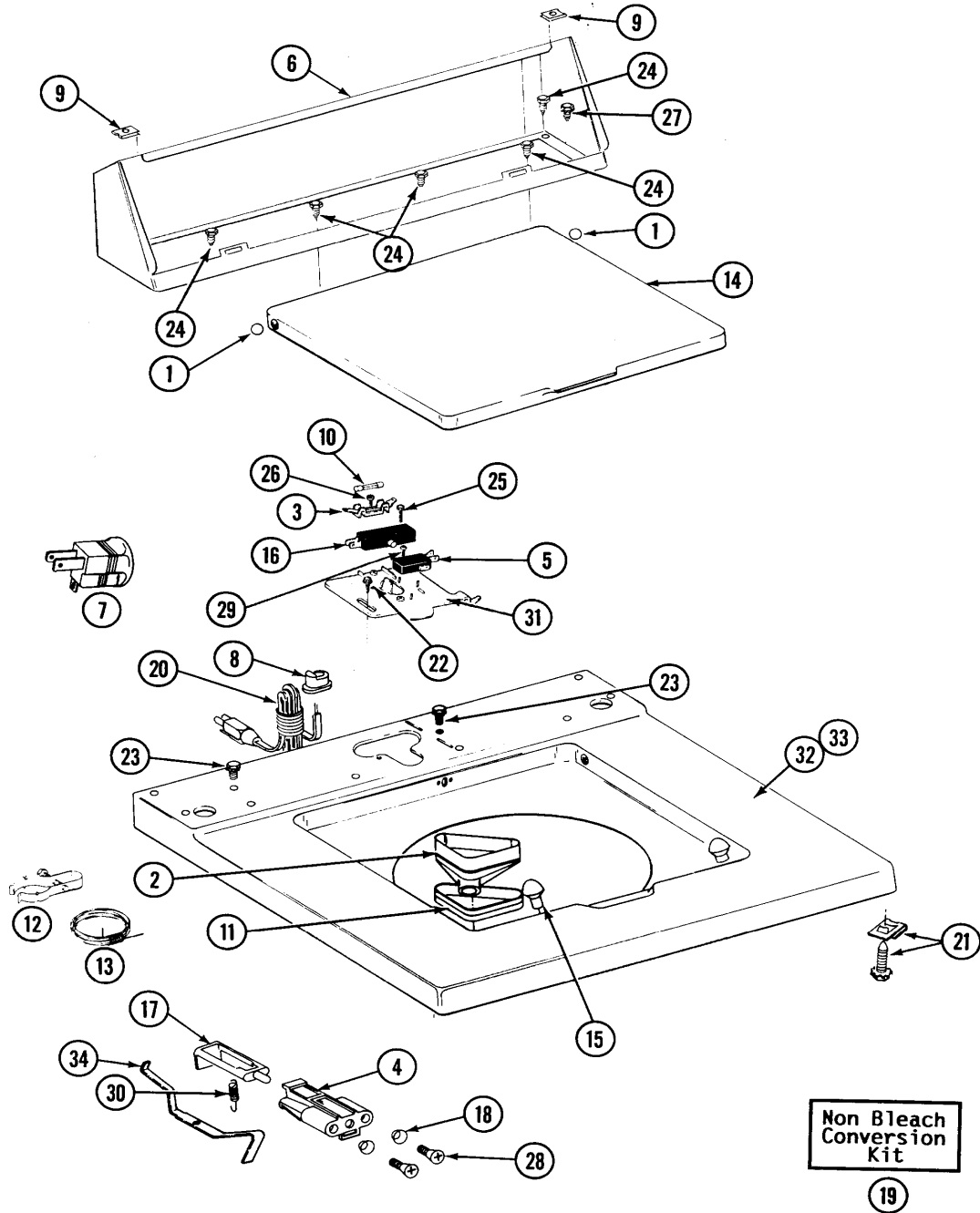
| No. | Part No. | Description | Series | Qty |
|-----|----------|---|--------|-----|
| 1 | 212942 | AIR DOME AND TUBE Note: AIR DOME & TUBE | A0 | 1 |
| 2 | 214818 | BACK UP PLATE Note: PLATE, BACK UP | A0 | 1 |
| 3 | 215821 | CAP, KNOB | A0 | 1 |
| 4 | 410296 | CLAMP,WATER LEVEL SWTCH TUBE Note: CLAMP, AIR DOME TUBE CORBIN | A0 | 1 |
| 5 | N 208114 | FACIA A9200 Note: PANEL, CONTROL | A5 | 1 |
| 5 | N 207390 | CONTROL PANEL Note: PANEL, CONTROL | A0 | 1 |
| 6 | N 214897 | PAD, CONTROL PANEL | A0 | 2 |
| 7 | 207215 | END CAP LH Note: END CAP (LH) | A0 | 1 |
| 8 | 207216 | END CAP RH Note: END CAP (RH) | A0 | 1 |
| 9 | 214894 | FASTENER, END CAP | A0 | 2 |
| 10 | 214872 | PALNUT, END CAP | A0 | 4 |
| 11 | 211605 | RETAINER, TIMER KNOB | A0 | 1 |
| 12 | 210932 | SCREW, #8 X 9/16 CTSK Note: SCREW, CONTROL PANEL & END CAP | A0 | 2 |
| 13 | 211168 | SCREW, #8 X 5/16 INCH Note: SCREW, WATER LEVEL SWITCH | A0 | 2 |
| 14 | 213117 | SCREW-TEMP. SWITCH TO PANEL Note: SCREW, TEMP. SWITCH | A0 | 2 |
| 15 | 213966 | SCREW-TIMER TO CONTROL PANE Note: SCREW, TIMER | A0 | 2 |
| 16 | 211065 | SPRING, TIMER KNOB | A0 | 1 |
| 17 | 207379 | TIMER | A0 | 1 |
| 17 | 207378 | TIMER | A5 | 1 |
| 18 | 215827 | TIMER DIAL SKIRT Note: INDICATOR, TIMER DIAL | A0 | 1 |
| 19 | 215828 | KNOB, TIMER (BLK) | A0 | 1 |
| 20 | 205033 | TIMER MOTOR 120-60 Note: TIMER, MOTOR (120-60) | A0 | 1 |
| 21 | 207361 | 4 LEVEL PRESSURE SWITCH Note: SWITCH, WATER LEVER CONTROL | A0 | 1 |
| 22 | 207368 | TEMP CONTROL SWITCH - 3 BUTTON Note: SWITCH, TEMP CONTROL (3 BUT) | A0 | 1 |
| 22 | 207367 | TEMP CONTROL SWITCH - 4 BUTTON Note: SWITCH, TEMP CONTROL (4 BUT) | A5 | 1 |
| 23 | 207383 | WIRE HARNESS Note: HARNESS, MAIN WIRE | A0 | 1 |
| 23 | 207382 | WIRE HARNESS Note: HARNESS, MAIN WIRE | A5 | 1 |

*Color Code (-)=Not Shown #=Series, Serial Prefix or Run No., N=Not Available

Section: TOP COVER, CONSOLE & LID SWITCH

Model: A9200

SECTION: TOP COVER, CONSOLE & LID SWITCH
MODEL: ALL MODELS



Issue Date: 4/90

Section: TOP COVER, CONSOLE & LID SWITCH

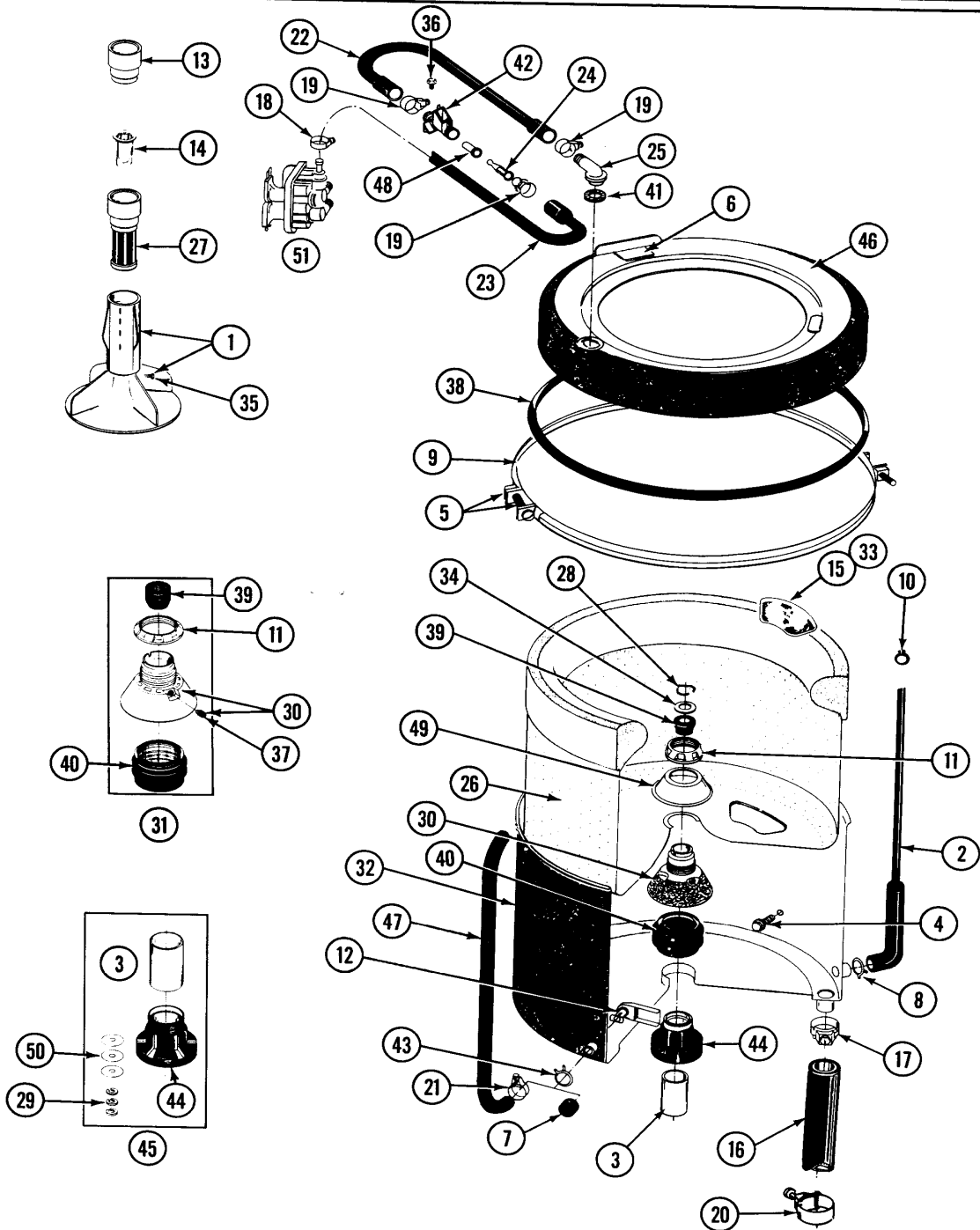
| No. | Part No. | Description | Series | Qty |
|------|----------|---|--------|-----|
| 1 | 211726 | HINGE, BALL | A0 | 1 |
| 2 | 215577 | BLEACH INLET WHITE Note: BLEACH INLET (WHT) | A0 | 1 |
| 3 | 207167 | BLOCK, FUSE | A0 | 1 |
| 4 | 214279 | BRACKET F/LID SWITCH PLUNGE Note: BRACKET, LID SWITCH PLUNGER | A0 | 1 |
| 4 N | 216256 | BRACKET, UNBALANCE Note: BRACKET, LID SWITCH PLUNGER | B8 | 1 |
| 5 | 207166 | SWITCH, CHECK | A0 | 1 |
| 6 N | 205635 | CONSOLE (WHT) | A0 | 1 |
| 7 N | 201808 | CONVERTER | A0 | 1 |
| 8 | 211881 | GROMMET, CORD | A0 | 1 |
| 9 | 215075 | FASTENER,CNTRL PNL TO CONSOLE Note: FASTENER, CONTROL PANEL | A0 | 2 |
| 10 | 207168 | FUSE | A0 | 1 |
| 11 | 214436 | GASKET | A0 | 1 |
| 12 | 301548 | CLAMP, GROUND (W/SCREW) | A0 | 1 |
| 13 | 311155 | GROUND WIRE | A0 | 1 |
| 14 | 212073 | LID-WHITE Note: LID (WHT) | A0 | 1 |
| 15 | 212716 | BUMPER, LID | A0 | 2 |
| 16 | 205415 | SWITCH, LID (W/O TUB LIGHT) | A0 | 1 |
| 17 N | 215700 | LID SWITCH PLUNGER Note: PLUNGER, LID SWITCH | A0 | 1 |
| 17 N | 208591 | KIT, PLUNGER & BRACKET | B8 | 1 |
| 18 | 211500 | WASHER,BRACKE TO TOP COVER Note: WASHER, BRACKET | A0 | 2 |
| 19 | 205997 | NON-BLEACH CONVERSION KIT Note: KIT, NON-BLEACH CONVERSION | A0 | 1 |
| 20 | 204590 | POWER CORD Note: CORD, POWER | A0 | 1 |
| 21 | 204445 | SCREW & FASTENER ASY. Note: ASSY, SCREW & FASTENER | A0 | 2 |
| 22 | 207159 | SCREW | A0 | 1 |
| 23 | 210186 | SCREW, GROUND WIRE TO BASE--NA Note: SCREW, GROUND WIRE | A0 | 2 |
| 24 | 211294 | SCREW | A0 | 5 |
| 25 | 213501 | SCREW, #6-20 X 1-1/8 INCH Note: SCREW (#6-20 X 1-1/8 INCH) | A0 | 2 |
| 26 | 215705 | SCREW | A0 | 1 |
| 27 | 313559 | SCREW | A0 | 1 |
| 28 | 910182 | SCREW | A0 | 2 |
| 29 | 912012 | SCREW | A0 | 1 |
| 30 | 213720 | SPRING | A0 | 1 |
| 31 | 215699 | BRACKET,SWITCH & FUSE Note: BRACKET, SWITCH & FUSE | A0 | 1 |
| 32 N | 207170L | TOP COVER ASSY ALM----NA Note: PART NOT USED | A0 | 1 |
| 32 N | 207170 | TOP COVER Note: PART NOT USED | A0 | 1 |
| 33 N | 207172 | TOP COVER Note: TOP COVER ASSY. (NON BLEACH) | A0 | 1 |
| 34 | 215704 | UNBALANCE LEVER Note: LEVER, UNBALANCE | A0 | 1 |

*Color Code (-)=Not Shown #=Series, Serial Prefix or Run No., N=Not Available

Section: TUB, AGITATOR, MOUNTING STEM & SEAL

Model: A9200

SECTION: TUB AGITATOR, MOUNTING STEM & SEAL
MODEL: ALL MODELS



Issue Date: 4/90

Section: TUB, AGITATOR, MOUNTING STEM & SEAL

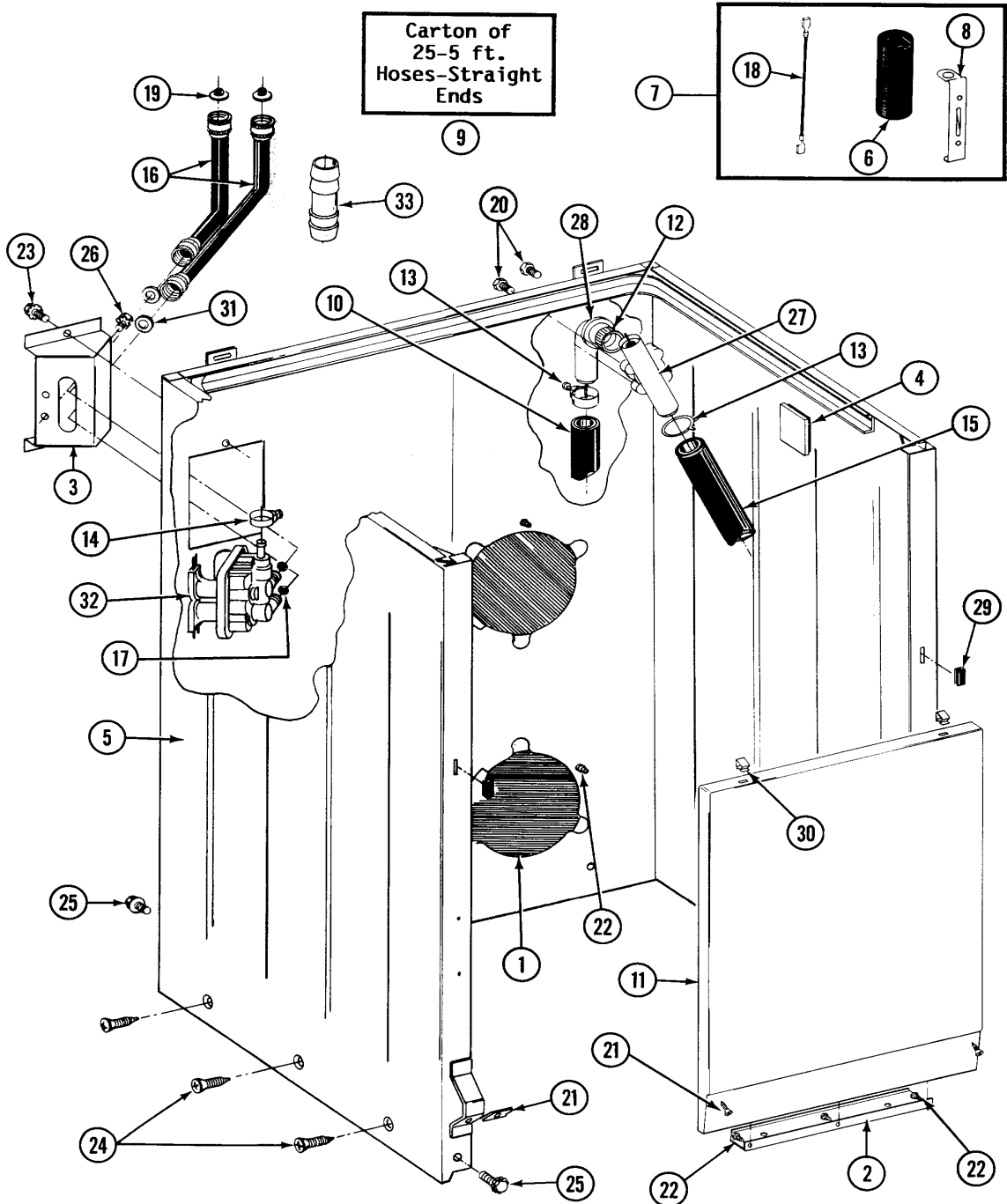
| No. | Part No. | Description | Series | Qty |
|-----|----------|---|--------|-----|
| 1 | 207228 | AGITATOR W/LOCK SCREW | A0 | 1 |
| 2 | 212942 | AIR DOME AND TUBE Note: AIR DOME & TUBE | A0 | 1 |
| 2 | 215976 | AIR TUBE | A0 | 1 |
| 3 | 211130 | LINER, TUB BEARING | A0 | 1 |
| 4 | 205254 | BOLT & GASKET ASSEMBLY (LONG) | A0 | 2 |
| 4 | 200744 | BOLT & GASKET ASSY.(SHORT) | A0 | 1 |
| 5 | 205529 | NUT & BOLT KIT FOR TUB CLAM Note: NUT & BOLT KIT, TUB CLAMP | A0 | 2 |
| 6 | 215232 | UNBALANCE BUMPER Note: BUMPER, UNBALANCE | A0 | 1 |
| 7 | 214725 | CAP FOR SPOUT-OUTER TUB Note: PART NOT USED | A0 | 1 |
| 8 | 211641 | CLAMP, 1-1/16" Note: CLAMP (1-1/16") | A0 | 1 |
| 9 | 200846 | CLAMP - TUB COVER Note: CLAMP, TUB COVER | A0 | 1 |
| 10 | 410296 | CLAMP,WATER LEVEL SWTCH TUBE Note: CLAMP, WATER LEVEL SWITCH TUBE | A0 | 1 |
| 11 | 211047 | NUT, CLAMPING (INNER TUB) | A0 | 1 |
| 12 | 214434 | SPOUT, DEFLECTOR Note: PART NOT USED | A0 | 1 |
| 13 | 215721 | DISPENSING CAP Note: PART NOT USED | A0 | 1 |
| 14 | 215733 | DISPENSING CUP Note: CUP, DISPENSING | A0 | 1 |
| 15 | 207219 | FILTER, SELF-CLEANING Note: PART NOT USED | A0 | 2 |
| 16 | 213045 | DRAIN HOSE-TUB TO PUMP Note: HOSE, OUTER TUB | A0 | 1 |
| 17 | 200900 | CLAMP, SPRAY ARM HOSE | A0 | 1 |
| 18 | 201575 | HOSE CLAMP Note: CLAMP, HOSE | A0 | 1 |
| 19 | 202515 | HOSE CLAMP - 1-1/16 INCH Note: CLAMP, HOSE (1-1/16 INCH) | A0 | 3 |
| 20 | 202574 | CLAMP, HOSE Note: CLAMP, HOSE | A0 | 1 |
| 21 | 205161 | CLAMP - 15/16" Note: CLAMP, BLEACH HOSE | A0 | 1 |
| 22 | 215234 | INJECTOR FILL HOSE Note: FILL HOSE, INJECTOR | A0 | 1 |
| 23 | 213013 | HOSE, INJECTOR Note: HOSE, INJECTOR | A0 | 1 |
| 24 | 213015 | INJECTOR NOZZLE Note: NOZZLE, INJECTOR | A0 | 1 |
| 25 | 215235 | INJECTOR TUBE Note: TUB, INJECTOR | A0 | 1 |
| 26 | 207831 | INNER TUB W/PLUG Note: INNER TUB W/PLUG | A0 | 1 |
| 27 | 207657 | LINT FILTER DEEP Note: PART NOT USED | A0 | 1 |
| 27 | 207426 | LINT FILTER DEEP Note: PART NOT USED | A0 | 1 |
| 28 | 015667 | RETAINING RING Note: CLIP, LOCK | A0 | 1 |
| 29 | 054867 | WASHER, LOCK | A0 | 3 |
| 30 | 202521 | MOUNTING STEM Note: STEM, MOUNTING | A0 | 1 |
| 31 | 204012 | MOUNTING STEM REPAIR KIT Note: KIT, MOUNTING STEM REPAIR | A0 | 1 |
| 32 | 205484 | OUTER TUB Note: TUB, OUTER | A0 | 1 |
| 33 | 215980 | PLUG, FILTER HOLE Note: PART NOT USED | A0 | 2 |
| 34 | 015666 | WASHER,RETAINING(CENTER SEAL)- Note: WASHER, RETAINING | A0 | 1 |
| 35 | 206478 | SCREW & WASHER FOR AGITATOR Note: SCREW & WASHER, AGITATOR | A0 | 1 |
| 36 | 312620 | SEMS SCREW, #10-16 X 1/2" Note: SCREW, SEMS (#10-16 X 1/2") | A0 | 1 |
| 37 | 211618 | SET SCREW, MTG. STEM Note: SET SCREW, MOUNTING STEM | A0 | 1 |
| 38 | 211232 | SEAL | A0 | 1 |
| 39 | 0A4298 | SEAL, AGITATOR DRIVE SHAFT Note: SEAL, AGITATOR DRIVE SHAFT | A0 | 1 |
| 40 | 201537 | SEAL AND SPRING Note: SEAL & SPRING | A0 | 1 |
| 41 | 215233 | SEAL FOR INJECTOR TUBE Note: SEAL, INJECTOR TUBE | A0 | 1 |
| 42 | 215447 | SLEEVE FOR INJECTOR Note: SLEEVE, INJECTOR | A0 | 1 |
| 43 | 214739 | SPRING HOSE CLAMP Note: CLAMP, SPRING HOSE | A0 | 1 |
| 44 | 200824 | BEARING, TUB | A0 | 1 |
| 45 | 204013 | TUB BEARING REPAIR KIT Note: KIT, TUB BEARING REPAIR | A0 | 1 |
| 46 | 206380 | TUB COVER Note: COVER, TUB | A0 | 1 |
| 47 | 214433 | TUBE, INLET TO TUB Note: PART NOT USED | A0 | 1 |
| 48 | 213016 | VALVE FOR INJECTOR SUB Note: VALVE, INJECTOR | A0 | 1 |
| 49 | 211210 | WASHER,CLAMPING NUT(STAINLESS) Note: WASHER, CLAMPING NUT | A0 | 1 |
| 50 | 211100 | WASHER, CUSHION | A0 | 3 |
| 51 | 205613 | WATER VALVE Note: VALVE, WATER | A0 | 1 |

*Color Code (-)=Not Shown #=Series, Serial Prefix or Run No., N=Not Available

Section: CABINET, WATER VALVE, HOSES & FRNT PANEL

Model: A9200

SECTION: CABINET, WATER VALVE, HOSES & FRONT PANEL
MODEL: ALL MODELS



Issue Date: 4/90

Section: CABINET, WATER VALVE, HOSES & FRNT P

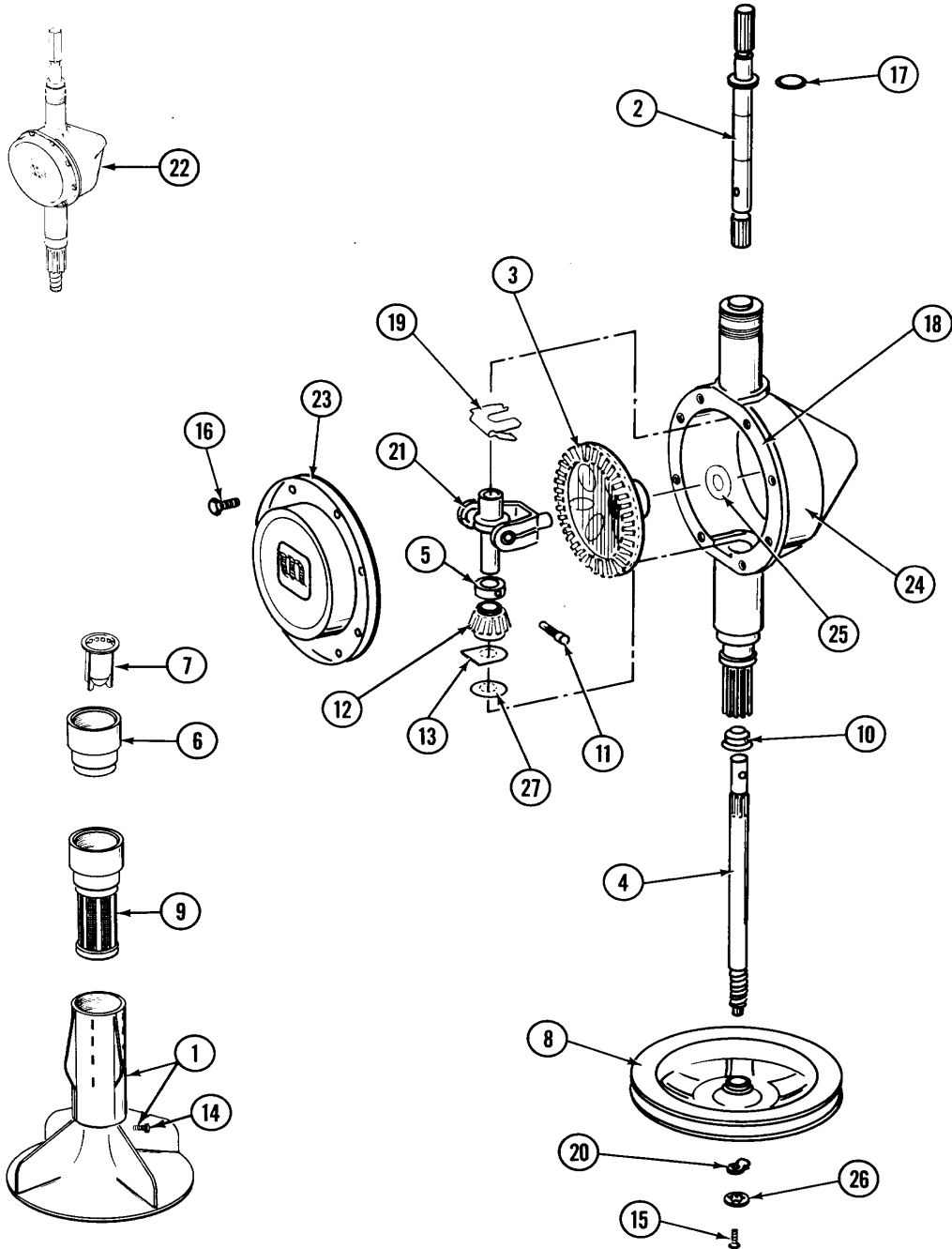
| No. | Part No. | Description | Series | Qty |
|-----|----------|---|--------|-----|
| 1 | N 211878 | PLATE, ACCESS | A0 | 2 |
| 2 | 213846 | GUARD, BELT | A0 | 1 |
| 3 | 214812 | BRACKET,WATER VALVE Note: BRACKET, WATER VALVE | A0 | 1 |
| 4 | 215058 | PAD, CABINET BUMPER | A0 | 2 |
| 5 | N 203319 | CABINET-WHITE Note: CABINET (WHT) | A0 | 1 |
| 6 | 200832 | CAPACITOR | A0 | 1 |
| 7 | 206103 | CAPACITOR KIT Note: KIT, CAPACITOR | A0 | 1 |
| 8 | 211149 | CLIP, CAPACITOR | A0 | 1 |
| 9 | 202861 | CARTON OF 25 HOSE, 5' Note: CARTON OF 25 HOSES (5 FT) | A0 | 1 |
| 10 | 215279 | HOSE, DRAIN | A0 | 1 |
| 10 | N 059149 | (7/8" I.D. CARTON OF 50 FT.) | A2 | 1 |
| 10 | 216017 | HOSE, DRAIN (7/8" I.D.) | A0 | 1 |
| 11 | 212998 | FRONT PANEL-WHITE Note: PANEL, FRONT (WHT) | A0 | 1 |
| 12 | 214765 | GASKET, SIPHON BREAK | A0 | 1 |
| 13 | 200461 | HOSE CLAMP - 1-5/8 INCH Note: CLAMP, HOSE (1-5/8 INCH) | A0 | 1 |
| 13 | 200908 | HOSE CLAMP - 1-1/2 INCH Note: CLAMP, HOSE (1-1/2 INCH) | A2 | 1 |
| 14 | 201575 | HOSE CLAMP Note: CLAMP, HOSE | A0 | 1 |
| 15 | 214767 | HOSE,PUMP TO SIPHON BREAK Note: HOSE, PUMP | A0 | 1 |
| 16 | 200681 | INLET HOSE, HOT 10 FT. Note: HOSE, INLET (HOT 10 FT.) | A0 | 1 |
| 16 | 202860 | INLET HOSE ASSY. Note: ASSY, INLET HOSE | A0 | 2 |
| 16 | 200688 | INLET HOSE, HOT 6 FT. Note: HOSE, INLET (HOT 6 FT.) | A0 | 1 |
| 16 | 200672 | INLET HOSE ASSY. Note: ASSY., INLET HOSE | A0 | 1 |
| 16 | 205828 | HOSE, INLET ASSY. Note: ASSY, INLET HOSE | A0 | 1 |
| 17 | 214337 | SCREEN, VALVE | A0 | 1 |
| 18 | 203237 | #17 WIRE WITH TERMINAL Note: #17 WIRE W/TERMINAL | A0 | 1 |
| 19 | 200961 | SCREEN WASHER, INLET HOSE Note: SCREEN WASHER, INLET HOSE | A0 | 1 |
| 20 | 014874 | SCREW Note: SCREW, SIPHON BREAK | A0 | 4 |
| 21 | 204439 | SCREW & FSTNER ASSY(FRT.PANEL) Note: ASSY., SCREW & FASTNER | A0 | 2 |
| 22 | 211294 | SCREW | A0 | 5 |
| 23 | 212276 | SCREW | A0 | 1 |
| 24 | 213007 | SCREW, CABINET Note: SCREW, CABINET | A0 | 6 |
| 25 | 213122 | SCREW,CBNT.TO FRNT OF BASE--NA Note: SCREW, CABINET | A0 | 2 |
| 25 | 213121 | SCREW | A0 | 3 |
| 26 | N 313561 | SCREW----NA | A0 | 2 |
| 27 | 206638 | SIPHON BREAK(W/CLAMP) Note: SIPHON BREAK (W/CLAMP) | A0 | 1 |
| 28 | 216016 | ELBOW, SIPHON BREAK Note: ELBOW, SIPHON BREAK | A2 | 1 |
| 28 | 214764 | SIPHON BREAK ELBOW Note: ELBOW, SIPHON BREAK | A0 | 1 |
| 29 | 214376 | SPACER, FRONT PANEL | A0 | 2 |
| 30 | 212982 | FASTENER, PANEL | A0 | 2 |
| 31 | 013783 | GASKET, INLET HOSE Note: WASHER, INLET HOSE | A0 | 2 |
| 32 | 205613 | WATER VALVE Note: VALVE, WATER | A0 | 1 |
| 33 | 216015 | HOSE COUPLING Note: COUPLING, HOSE | A0 | 1 |

*Color Code (-)=Not Shown #=Series, Serial Prefix or Run No., N=Not Available

Section: ORBITAL TRANSMISSION

Model: A9200

SECTION: ORBITAL TRANSMISSION
MODEL: ALL MODELS



Issue Date: 4/90

Section: ORBITAL TRANSMISSION

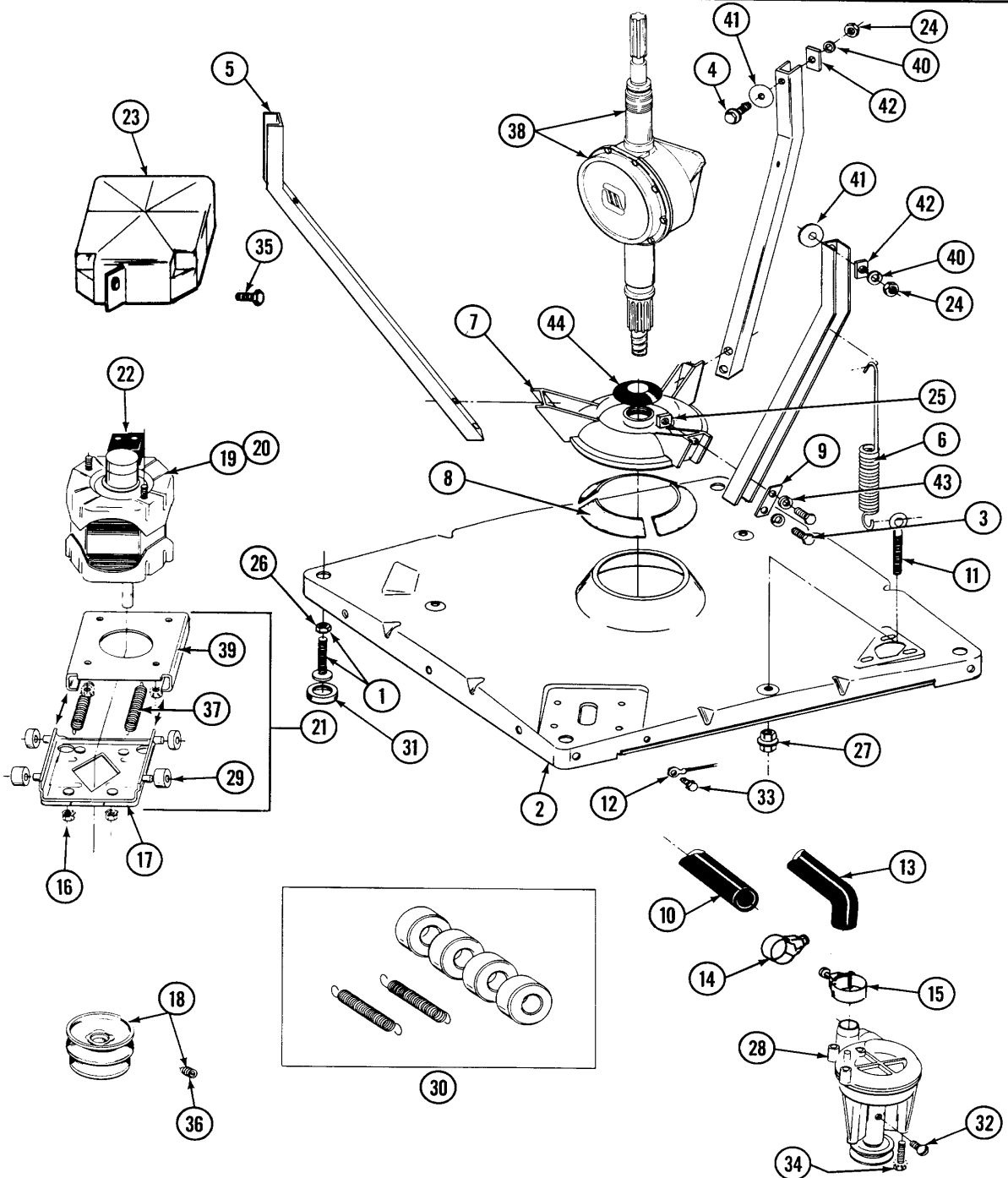
| No. | Part No. | Description | Series | Qty |
|-----|----------|--|--------|-----|
| 1 | 207228 | AGITATOR W/LOCK SCREW Note: AGITATOR W/LOCK SCREW | A0 | 1 |
| 2 | 207153 | SHAFT, AGITATOR (W/SPRING) | A0 | 1 |
| 3 | 206713 | GEAR, BEVEL | A0 | 1 |
| 4 | 215410 | CENTER SHAFT - LARGER Note: SHAFT, CENTER (LARGER) | A0 | 1 |
| 5 | 215415 | COLLAR, LOWER | A0 | 1 |
| 6 | 215721 | DISPENSING CAP Note: PART NOT USED | A0 | 1 |
| 7 | 215733 | DISPENSING CUP Note: CUP, DISPENSING | A0 | 1 |
| 8 | 211059 | PULLEY, DRIVE | A0 | 1 |
| 9 | 207657 | LINT FILTER DEEP Note: PART NOT USED | A0 | 1 |
| 9 | 207426 | LINT FILTER DEEP Note: PART NOT USED | A0 | 1 |
| 10 | 206602 | SEAL, LIP (CENTER SHAFT) | A0 | 1 |
| 11 | 206629 | PIN, COLLAR | A0 | 1 |
| 12 | 215401 | PINION | A0 | 1 |
| 13 | 215395 | PLATE, CLUTCH | A0 | 1 |
| 14 | 206478 | SCREW & WASHER FOR AGITATOR Note: SCREW & WASHER, AGITATOR | A0 | 1 |
| 15 | 211375 | SCREW, STOP LUG (CENTER SHAFT) Note: SCREW, STOP LUG | A0 | 1 |
| 16 | 215417 | SCREW, TRANSMISSION COVER | A0 | 8 |
| 17 | 210690 | SEAL, RUBBER | A0 | 1 |
| 18 | 058700 | SILASTIC, ADH. SEALANT Note: SILASTIC, ADH. SEALANT | A0 | 1 |
| 19 | 215581 | SPRING, AGITATOR SHAFT | A0 | 1 |
| 20 | 211089 | LUG, STOP | A0 | 1 |
| 21 | 206685 | BLOCK, TORQUE AND YOKE ASSEMBL | A0 | 1 |
| 22 | 206707 | TRANSMISSION, ORBITAL | A0 | 1 |
| 23 | 206628 | COVER, TRANSMISSION | A0 | 1 |
| 24 | 206624 | HOUSING, TRANSMISSION | A0 | 1 |
| 25 | 215394 | WASHER, BEVEL GEAR | A0 | 1 |
| 26 | 211090 | WASHER, LOCK | A0 | 1 |
| 27 | 211483 | WASHER, SPLINED | A0 | 1 |

*Color Code (-)=Not Shown #=Series, Serial Prefix or Run No., N=Not Available

Section: BASE, PUMP, MOTOR & COMPONENTS

Model: A9200

SECTION: BASE, PUMP, MOTOR & COMPONENTS
MODEL: ALL MODELS



Issue Date: 4/90

Section: BASE, PUMP, MOTOR & COMPONENTS

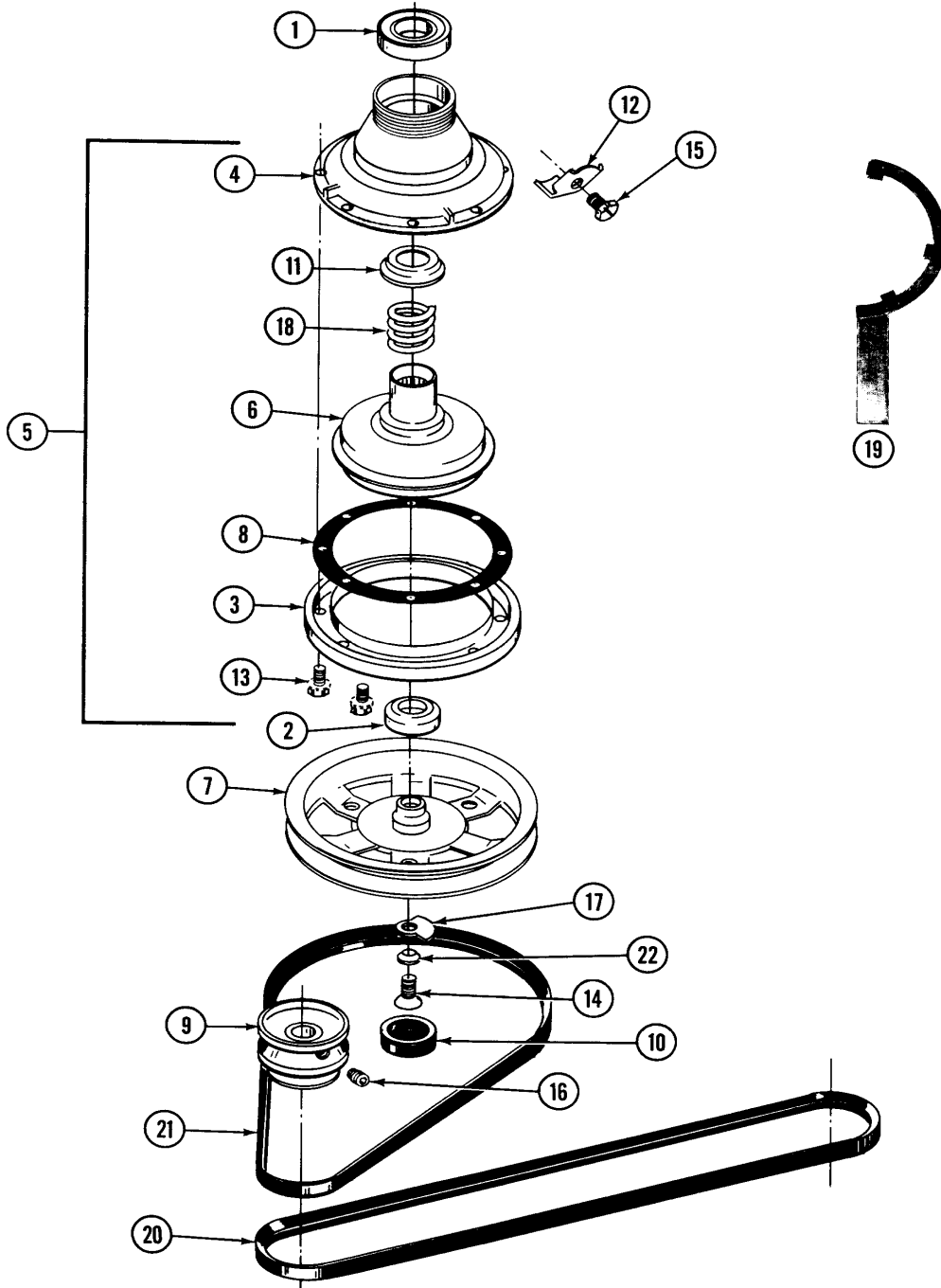
| No. | Part No. | Description | Series | Qty |
|-----|----------|--|--------|-----|
| 1 | 302699 | LEG, ADJUSTABLE (W/NUT) | A0 | 4 |
| 2 | 203274 | BASE WITH DAMPER PADS Note: BASE W/DAMPER PADS | A0 | 1 |
| 3 | 015627 | SCREW, HEX HD CAP 5/16 X 5/8 | A0 | 6 |
| 4 | 200744 | BOLT & GASKET ASSY.(SHORT) | A0 | 1 |
| 4 | 205254 | BOLT & GASKET ASSEMBLY (LONG) | A0 | 2 |
| 5 | 213053 | BRACE, TUB | A0 | 3 |
| 6 | 213054 | CENTERING SPRING - 3 USED Note: SPRING, CENTERING | A0 | 3 |
| 7 | 203725 | DAMPER W/BOLT & CLIP | A0 | 1 |
| 8 | 203956 | DAMPER PAD KIT (W/POLY LUBE) | A0 | 1 |
| 9 | 213073 | WASHER, DOUBLE Note: WASHER, DOUBLE | A0 | 3 |
| 10 | 214767 | HOSE,PUMP TO SIPHON BREAK Note: HOSE, PUMP | A0 | 1 |
| 11 | 213120 | EYE BOLT FOR CENTER SPRING Note: EYE BOLT, CENTER SPRING | A0 | 3 |
| 12 | 204807 | GRND.WIRE,SUPP.PLTE TO TOP CVR Note: GROUND WIRE, MOTOR | A0 | 1 |
| 13 | 213045 | DRAIN HOSE-TUB TO PUMP Note: HOSE, OUTER TUB | A0 | 1 |
| 14 | 200461 | HOSE CLAMP - 1-5/8 INCH Note: CLAMP, HOSE (1-5/8 INCH) | A0 | 1 |
| 15 | 202574 | CLAMP, HOSE Note: CLAMP, HOSE | A0 | 1 |
| 16 | N 311246 | KEPS NUT-MOTOR BASE Note: KEPS NUT, MOTOR BASE | A0 | 3 |
| 17 | 205908 | LOWER MOTOR MOUNT Note: MOUNT, MOTOR (LOWER) | A0 | 1 |
| 18 | 200816 | PULLEY, MOTOR (W/SET SCREW) | A0 | 1 |
| 19 | 201805 | MOTOR (ONE SPEED) Note: A4910-A5910-A8500-A8520-A8600 A8640-A8650-A9200-A9300-A9400 A9400S | A0 | 1 |
| 20 | 201807 | MOTOR - TWO SPEED 120-60 Note: PART NOT USED A6910-A8700-A8740-A8800-A8820 A8840-A9600-A9700-A9700S A9800-A9900 | A0 | 1 |
| 21 | 205999 | MOTOR MOUNT ASSM COMPLETE Note: ASSY., MOTOR MOUNT (COMPLETE) | A0 | 1 |
| 22 | N 205134 | MOTOR EXTERNAL START SWITCH Note: SWITCH, MOTOR EXTERNAL START 2-1666-8 AND 2-5464 | A0 | 1 |
| 22 | 206505 | SWITCH, MOTOR START Note: SWITCH, MOTOR START 2-1664-11 AND 2-5463-1 | A0 | 1 |
| 22 | 206504 | MOTOR EXTERNAL START SWITCH Note: SWITCH, MOTOR EXTERNAL START 2-1666-13 AND 2-5464-1 | A0 | 1 |
| 22 | 205132 | SWITCH, MOTOR START Note: SWITCH, MOTOR EXTERNAL START PROD #2-1664-4,2-1664-9, 2-1664-10,2-1664-12 AND 2-5463-2 | A0 | 1 |
| 22 | 205131 | SWITCH, MOTOR START Note: SWITCH, MOTOR EXTERNAL START 2-1666-2,2-1666-11,2-1666-12 2-1666-14 AND 2-5464-2 | A0 | 1 |
| 22 | N 205133 | MOTOR EXTERNAL START SWITCH Note: SWITCH, MOTOR EXTERNAL START 2-1664-8 AND 2-5463 | A0 | 1 |
| 23 | 215098 | SHIELD, MOTOR | A0 | 1 |
| 24 | 052734 | NUT Note: NUT, BRACE TO TUB | A0 | 3 |
| 25 | 052785 | NUT,BRACE TO DAMPER Note: NUT, BRACE | A0 | 6 |
| 26 | 210385 | NUT, LOCK | A0 | 4 |
| 27 | 211949 | NUT, EYEBOLT | A0 | 3 |
| 28 | 202203 | PUMP AS PAK | A0 | 1 |
| 29 | 204998 | GLIDE KIT (4 W/POLY LUBE) Note: ROLLER KIT (4 W/POLY LUBE) | A0 | 1 |
| 30 | 205000 | GLIDE & SPRING KIT Note: KIT, ROLLER & SPRING | A0 | 1 |
| 31 | 210684 | FOOT, RUBBER | A0 | 4 |
| 32 | 015408 | SCREW, BEARING INSERT | A0 | 1 |
| 33 | 210186 | SCREW, GROUND WIRE TO BASE--NA Note: SCREW, GROUND WIRE | A0 | 1 |
| 34 | 211880 | SCREW, HEX HD #10 X 1/2 INC Note: SCREW, PUMP TO BASE | A0 | 3 |
| 35 | 213121 | SCREW Note: SCREW, MOTOR SHIELD | A0 | 1 |
| 36 | 053241 | SET SCREW, PULLEY | A0 | 1 |
| 37 | 202718 | TENSION SPRINGS Note: SPRINGS, TENSION | A0 | 1 |
| 38 | 206707 | TRANSMISSION, ORBITAL | A0 | 1 |
| 39 | 214956 | MOUNT, MOTOR/UPPER Note: PLATE, MOTOR MOUNT (UPPER) | A0 | 1 |
| 40 | 054867 | WASHER, LOCK | A0 | 3 |
| 41 | 211100 | WASHER, CUSHION | A0 | 3 |
| 42 | 212979 | WASHER, TUB BRACE | A0 | 3 |
| 43 | 911852 | WASHER, LOCK (BRACE) | A0 | 6 |
| 44 | 211028 | DEFLECTOR,WATER (DRIVE TUBE) Note: DEFLECTOR, WATER | A0 | 1 |

*Color Code (-)=Not Shown #=Series, Serial Prefix or Run No., N=Not Available

Section: CLUTCH, BRAKE & BELTS

Model: A9200

SECTION: CLUTCH, BRAKE & BELTS
MODEL: ALL MODELS



Issue Date: 4/90

Section: CLUTCH, BRAKE & BELTS

| No. | Part No. | Description | Series | Qty |
|------|----------|---|--------|-----|
| 1 | 200720 | BALL BEARING, RADIAL | A0 | 1 |
| 2 | 200835 | BEARING, BRAKE ROTOR | A0 | 1 |
| 3 | 211043 | DRUM, BRAKE | A0 | 1 |
| 4 | 211045 | HOUSING, BRAKE | A0 | 1 |
| 5 | 201190 | BRAKE ASSEMBLY Note: PACKAGE, BRAKE | A0 | 1 |
| 6 | 201126 | ROTOR, BRAKE (W/FACING) | A0 | 1 |
| 7 | 211059 | PULLEY, DRIVE | A0 | 1 |
| 8 | 211042 | GASKET, BRAKE DRUM | A0 | 1 |
| 9 | 200816 | PULLEY, MOTOR (W/SET SCREW) | A0 | 1 |
| 10 N | 211038 | CAP, OIL RETAINER | A0 | 1 |
| 11 | 211039 | RETAINER, BRAKE SPRING | A0 | 1 |
| 12 | 213325 | CLIP, RETAINER | A0 | 1 |
| 13 | 211000 | SCREW,HEX HEAD (BRAKE DRUM) Note: SCREW, HEX HEAD (BRAKE DRUM) | A0 | 8 |
| 14 | 211375 | SCREW,STOP LUG(CENTER SHAFT) Note: SCREW, STOP LUG (CENTER SHAFT) | A0 | 1 |
| 15 | 213326 | SCREW, RETAINING CLIP Note: BOLT, RETAINING CLIP | A0 | 1 |
| 16 | 053241 | SET SCREW, PULLEY | A0 | 1 |
| 17 | 211089 | LUG, STOP | A0 | 1 |
| 18 | 211041 | SPRING, BRAKE | A0 | 1 |
| 19 | 038315 | TOOL, BRAKE PKG ASSY | A0 | 1 |
| 20 | 211124 | V BELT, PUMP | A0 | 1 |
| 21 | 211125 | V BELT,DRIVE PULLEY Note: V BELT, DRIVE PULLEY | A0 | 1 |
| 22 | 211090 | WASHER, LOCK | A0 | 1 |

*Color Code (-)=Not Shown #=Series, Serial Prefix or Run No., N=Not Available

Section: EXPORT PARTS (120V-60HZ)

Model: A9200

No image available

NOIMAGE

Section: EXPORT PARTS (120V-60HZ)

| No. | Part No. | Description | Series | Qty |
|-----|----------|--|--------|-----|
| 1 | 200832 | CAPACITOR | A0 | 1 |
| 2 | 211149 | CLIP, CAPACITOR | A0 | 1 |
| 3 | 211294 | SCREW | A0 | 1 |
| 4 | 207842 | WIRE HARNESS Note: HARNESS, MAIN WIRE | A0 | 1 |
| 5 | 203237 | #17 WIRE WITH TERMINAL Note: #17 WIRE W/TERMINAL | A0 | 1 |

*Color Code (-)=Not Shown #=Series, Serial Prefix or Run No., N=Not Available