

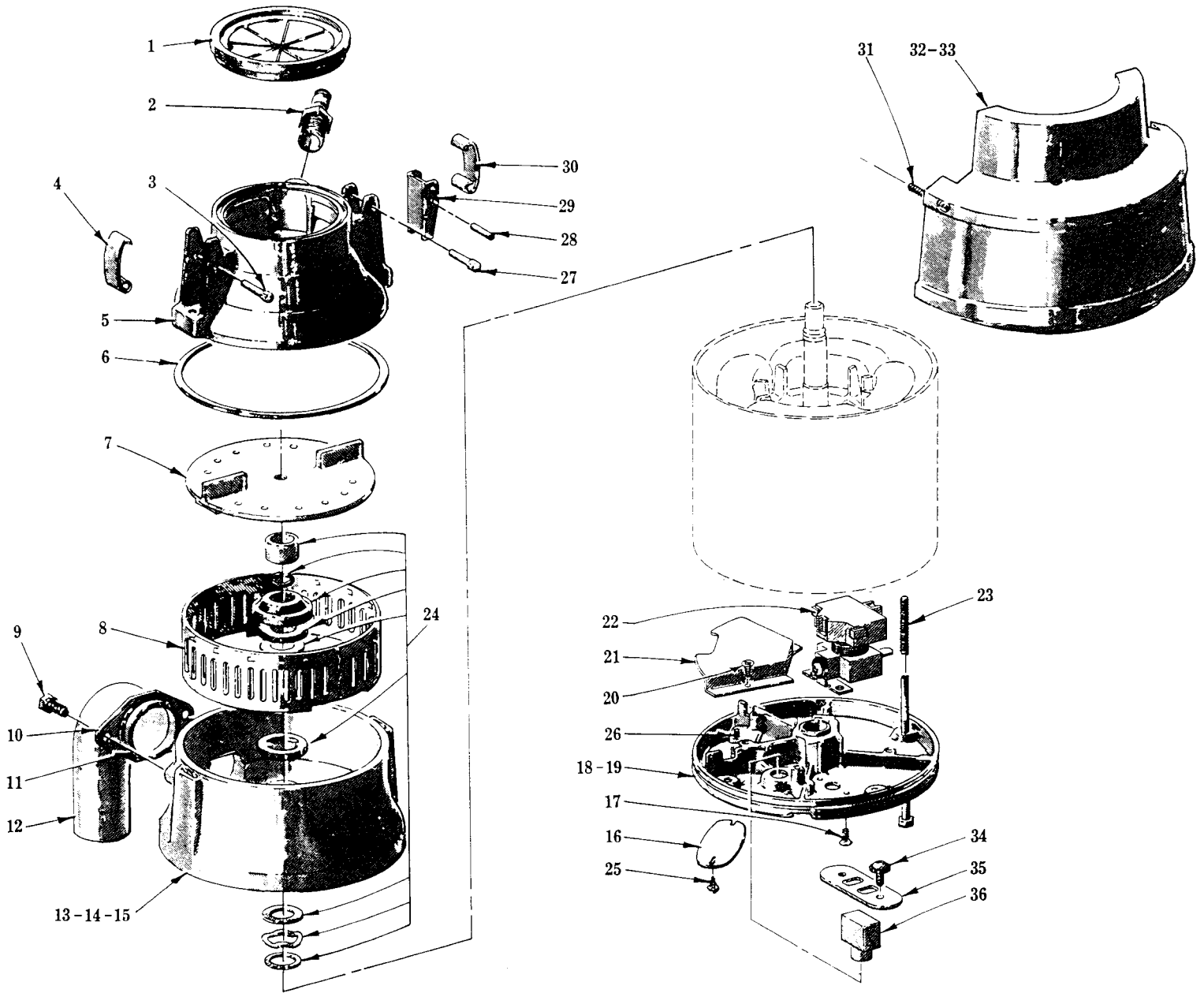
*Catalog of*

# REPLACEMENT PARTS

**KitchenAid®**

## VALUE FOOD WASTE DISPOSERS

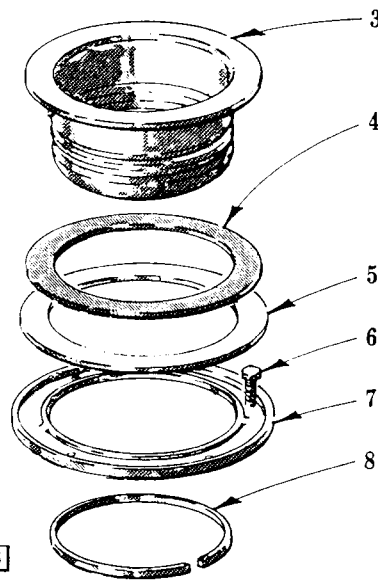
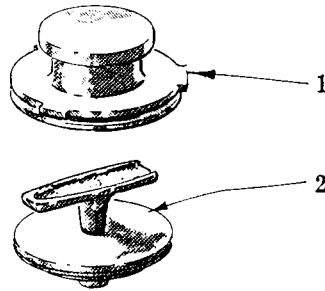
ML-42133	KD100
ML-42134	KD200
ML-41837	KWC200B
ML-42130	KWC200C



PL-19977

POWER UNIT

1	242652	Guard - Splash
2	240758	Connector - Male Hose
3	PG-8-2	Groov-Pin - Type C Driv-Loc, 1/8 x 1-1/4
4	202514	Hook - Clamp
5	110974-9	Housing - Upper (Gray)
6	201424	Gasket - Waist
7	242132-1	Flywheel Assy
8	115137-2	Ring - Shredder
9	SC-36-14	Cap Screw - 1/4-20 x 1/2 Hex Hd
10	241026	Flange - Spout
11	115818	Seal - Spout
12	240119	Spout & Seal Assy. (Incls. item 11)
13	110399-26	Lower Housing Assy. (Gray) (KD100/KD200)
14	110399-25	Lower Housing Assy. (Gray) (Hobart Motor) (KWC200C)
15	110399-24	Lower Housing Assy. (G.E. Motor) (KWC200B/C)
16	109923	Cover - Elec. Access
17	SC-14-88	Mach. Screw 8-32 x 1/4 Flat Hd
18	243147-2	Bearing Bracket Assy. (Gray) (Hobart Motor)
19	243147-1	Bearing Bracket Assy. (G.E. Motor)
20	SD-12-30	Self-Tapping Screw 6-32 x 5/16 Phil. Pan Hd., Type T
21	115314	Barrier - Electrical Enclosure
22	87714-17-1	Relay (115 V., 60 Hz.)
23	243173	Screw - Stator
24	240593-2	Water Seal Service Kit
25	SD-12-30	Self-Tapping Screw 6-32 x 5/16 Phil. Pan Hd., Type T
26	202559	Screw - Machine Grounding
27	PG-8-2	Groov-Pin - Type C Driv-Loc, 1/8 x 1-1/4
28	202917	Pin - Hinge
29	202515	Lever - Clamp
30	202514	Hook - Clamp
31	115369	Self-Tapping Screw 6-20 x 11/16 Phil. Pan Hd., Type B (KWC200B)
32	243184	Shell - Sound Barrier (Front)
33	242006	Shell - Sound Barrier (Punched) (Rear)
34	278497	Screw Assy. - Protector
35	121403	Retainer - Protector
36	294681-4	Protector



PL-19978

**SINK FLANGE UNIT**

1	202125	Closure - Vinyl (KD100/KD200)
2	242915	Seal - Closure (KWC200B/C)
3	203907-1	Flange - Sink
4	201462	Gasket - Paperboard
5	202700	Washer - Pressure
6	202501	Screw - Jack
7	203160	Plate - Support
8	202536	Ring - Snap
	242978	Closure Assy. (Incls. item 2) (KWC200B/C)
	200338-23	Sink Flange Assy. (Incls. items 3 thru 8)