

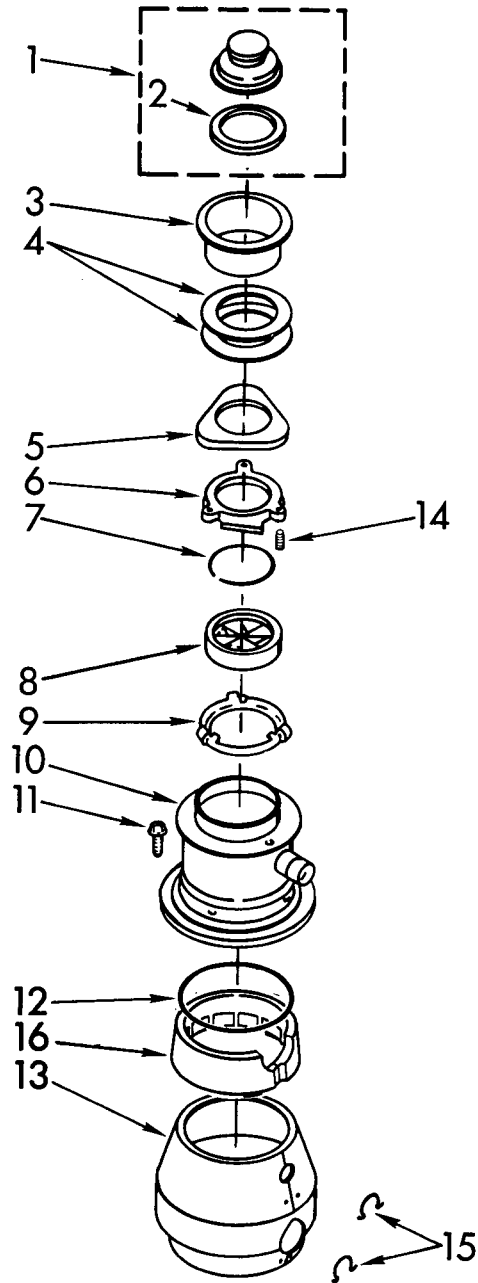
PARTS LIST FOR

KitchenAid

DISPOSER

**MODEL
KCDC250X1**

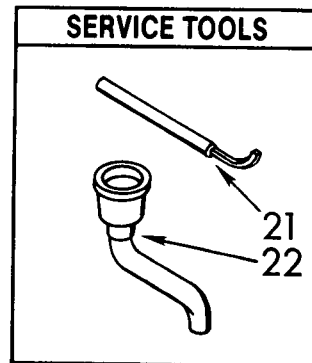
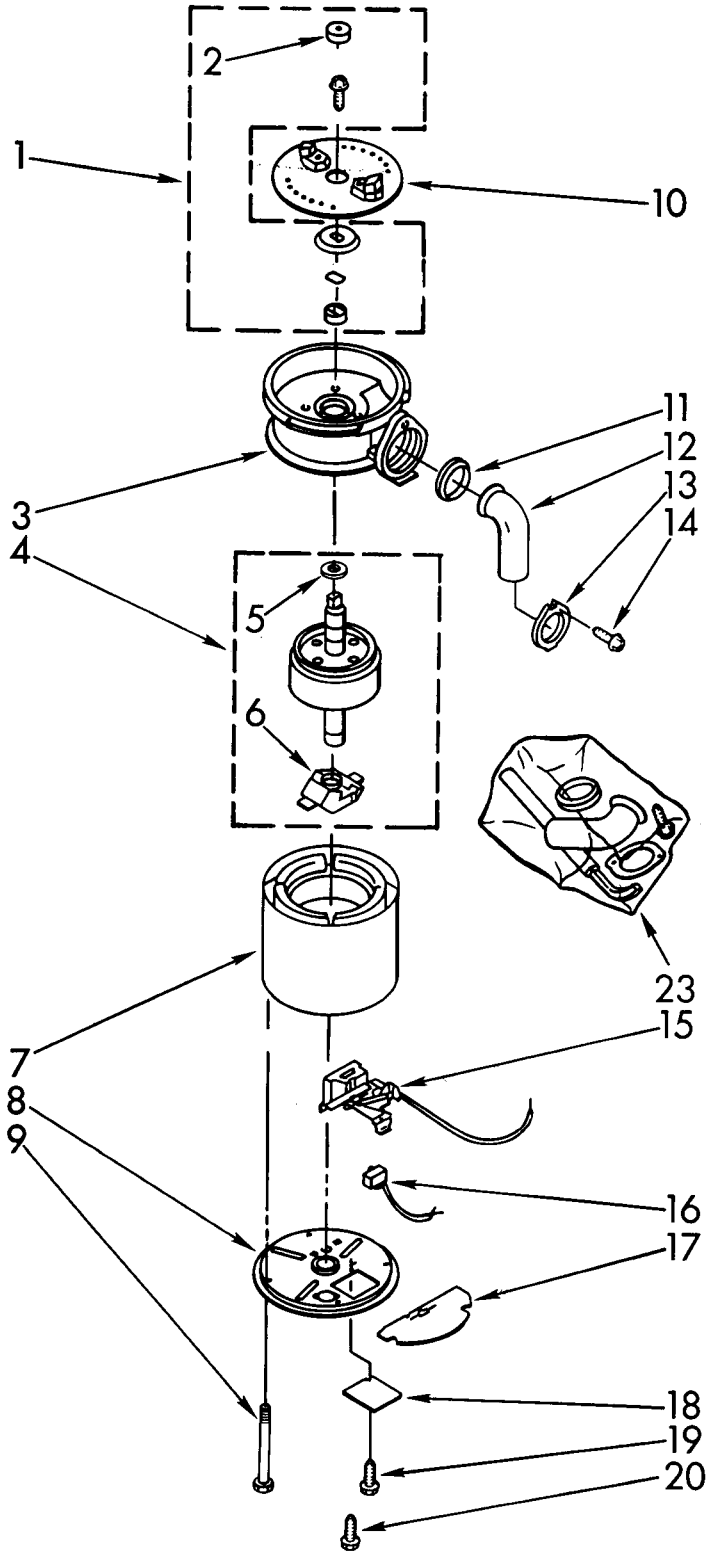
UPPER HOUSING AND FLANGE PARTS



1	4211577	Stopper Assembly
2	4211333	Gasket, Stopper
3	4211553	Flange, Strainer
4	4211302	Gasket, Sink (2)
5	4211303	Flange, Backup
6	4211304	Flange, Mounting
7	4211306	Ring, Retaining
8	4211334	Gasket, Mounting
9	4211308	Flange, Body
10	4211554	Container, Body Assembly
11	4211335	Screw (3)
12	4211337	O-Ring
13	4211555	Trim Shell Assembly (includes illus. No. 15)
14	4211305	Screw, Backup (3)
15	4211339	Clip, Trim Shell (2)
16	4211444	Insulation, Top

UPPER HOUSING AND MOTOR PARTS

For Model: KCDC250X1



1	4211578	Kit, Sleeve And Seal (Includes Plug, Bolt, Washer, Slinger And Sleeve)
2	4211341	Plug
3	4211492	End Bell Assembly (Upper)
4	4211579	Rotor And Shaft Assembly
5	4211321	Washer
6	4211322	Centrifugal Actuator Assembly
7	4211556	Stator Assembly
8	4211515	End Frame Assembly (Lower)
9	4211348	Bolt, Thru (4)
10	4211342	Shredder
11	4211344	Gasket, Tailpipe
12	4211317	Tailpipe
13	4211345	Flange, Tailpipe
14	4211346	Screw, Tailpipe
15	4211324	Switch Assembly Start
16	4211549	Protect, Overload
17	4211326	Shield, Wire
18	4211328	Cover, Terminal
19	4211329	Screw
20	4211330	Screw, Tailpipe
21	4211435	Emergency, Wrench Assembly
22	4211396	Adapter, Sink Assembly
23	4211565	Kit, Instruction (Includes Nos. 11, 12, 13, 14, 21, Instructions and Use and Care Guide)

Following Parts Not Illustrated

LIT4211550	Guide, Use And Care
LIT4211551	Instructions, Installation
LIT4211580	Repair Parts Lis