

PARTS LIST

for

KitchenAid®

5 QT. STAND MIXER

ARTISAN TILT HEAD

MODELS:

KSM150PSWH0 (White)
KSM150PSCLO (Crystal Blue)
KSM150PSBU0 (Cobalt Blue)
KSM150PSGP0 (Grape)
KSM150PSGR0 (Imperial Grey)
KSM150PSBK0 (Imperial Black)
KSM150PSCB0 (Cranberry)
KSM150PSOB0 (Onyx Black)
KSM150PSGN0 (Empire Green)
KSM150PSAC0 (Almond Creme)
KSM150PSGB0 (Glacier Blue)
KSM150PSIC0 (Ice)
KSM150PSLV0 (Lavender)
KSM150PSER0 (Empire Red)
KSM150PSMY0 (Majestic Yellow)
KSM150PSLM0 (Lemon)
KSM150PSPK0 (Pink)
KSM150PSPT0 (Pistachio)
KSM150PSMG0 (Martha Green)
KSM150PSCV0 (Caviar)
KSM150PSSF0 (Sunflower)
KSM150PSTG0 (Tangerine)
KSM150PSMC0 (Metallic Chrome)

KSM150PSCHO (Chocolate)
KSM150PSVN0 (Vanilla)
KSM150PSWB0 (Wasabi)
KSM150PSVT0 (Violet)
KSM150PSBW0 (Blue Willow)
KSM150PSGC0 (Gloss Cinnamon)
KSM150PSMA0 (Mango)
KSM150PSML0 (Meyer Lemon)
KSM150PSOR0 (Spicy Orange)
KSM150PSPL0 (Dark Plum)
KSM150PSRB0 (Reef Blue)
KSM150PSSU0 (Surf Green)
KSM150PSCY0 (Bing Cherry)
KSM150PSMN0 (Melon)
KSM150PSGA0 (Green Apple)
KSM150PSCN0 (Citron)
KSM150PSPN0 (Persimmon)
KSM150PSC00 (Cornflower Blue)
KSM150PSCT0 (Clementine)
KSM150PSWG0 (Williams Sonoma Green)
KSM150PSBF0 (Buttercup)
KSM150PSSM0 (Silver Metallic)

KSM150PSCPK0 (Pink)
KSM150PSBL0 (Bayleaf)
KSM150PSBY0 (Boysenberry)
KSM150PSFB0 (French Blue)
KSM150PSGG0 (Grass Green)
KSM150PSSY0 (Sunshine Yellow)
KSM150PSAQ0 (Aqua Sky)
KSM150PSPE0 (Pear)
4KSM150PSWH0 (White)
4KSM150PSBU0 (Cobalt Blue)
4KSM150PSGR0 (Imperial Grey)
4KSM150PSOB0 (Onyx Black)
4KSM150PSGN0 (Empire Green)
4KSM150PSAC0 (Almond Creme)
4KSM150PSLV0 (Lavender)
4KSM150PSER0 (Empire Red)
4KSM150PSMY0 (Majestic Yellow)
4KSM150PSPK0 (Pink)
4KSM150PSPT0 (Pistachio)
4KSM150PSTG0 (Tangerine)
4KSM150PSMC0 (Metallic Chrome)
4KSM150PSBW0 (Blue Willow)



FOR CUSTOMER SATISFACTION ALWAYS USE
FACTORY SPECIFICATION PARTS

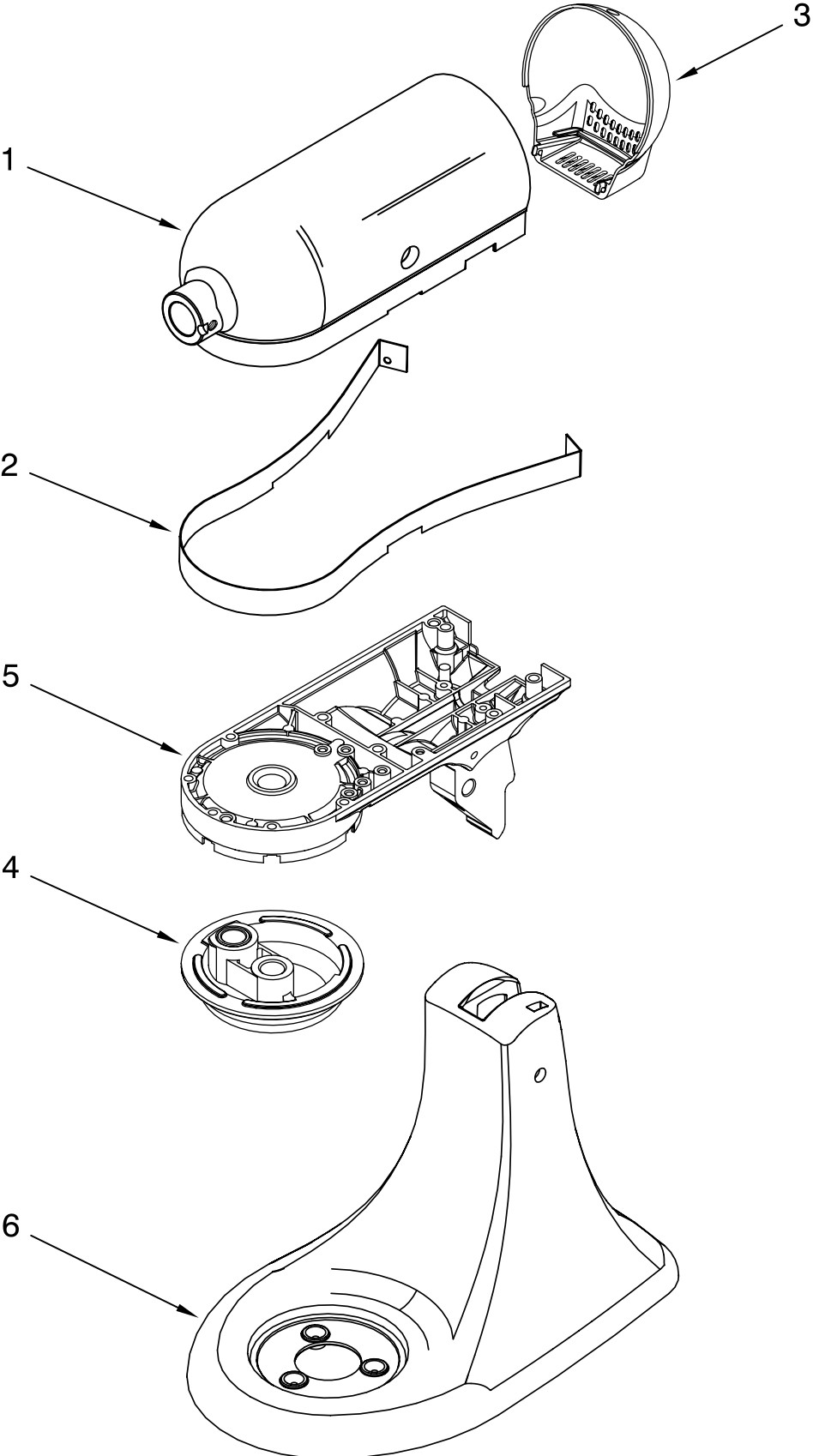


KITCHENAID

ST. JOSEPH MICHIGAN 49085

COLOR VARIATION PARTS

For Models: KSM150PS__0, 4KSM150PS__0



FOR ORDERING INFORMATION REFER TO PARTS PRICE LIST

COLOR VARIATIONS PARTS

For Models: KSM150PS__0, 4KSM150PS__0

Illus. No.	Part No.	DESCRIPTION	Illus. No.	Part No.	DESCRIPTION	Illus. No.	Part No.	DESCRIPTION
1		Motor Housing	3		End Cover	4		Planetary
	240291-1	White		240253-1	White		240286-1	White
	9707165	Crystal Blue		9707170	Crystal Blue		9707168	Crystal Blue
	240291-7	Cobalt Blue		240253-8	Cobalt Blue		240286-10	Cobalt Blue
	9707126	Grape		9707131	Grape		9707129	Grape
	240291-22	Imperial Gray		240253-23	Imperial Gray		240286-24	Imperial Gray
	9704790	Imperial Black		240253-13	Black Crinkle		9704797	Imperial Black
	9706796	Cranberry		9706801	Cranberry		9706799	Cranberry
	240291-13	Onyx Black		240253-14	Onyx Black		240286-16	Onyx Black
	240291-10	Empire Green		240253-11	Empire Green		240286-13	Empire Green
	240291-16	Almond Creme		240253-16	Almond Creme		240286-18	Almond Creme
	9706678	Glacier Blue		9706668	Glacier Blue		9706695	Glacier Blue
	9707662	Ice		9707667	Ice		9707665	Ice
	9706823	Lavender		9706828	Lavender		9706826	Lavender
	240291-21	Empire Red		240253-22	Empire Red		240286-23	Empire Red
	240291-20	Majestic Yellow		240253-21	Majestic Yellow		240286-22	Majestic Yellow
	9707152	Lemon		9707157	Lemon		9707155	Lemon
	9706473	Pink		9706469	Pink		9706475	Pink
	9706836	Pistachio		9706841	Pistachio		9706839	Pistachio
	9707433	Martha Green		9707438	Martha Green		9707436	Martha Green
	9705243	Caviar		9705241	Caviar		9705244	Caviar
	9707139	Sunflower		9707144	Sunflower		9707142	Sunflower
	9706849	Tangerine		9706854	Tangerine		9706852	Tangerine
	9704025	Metallic Chrome		240253-4	Metallic Chrome		9706670	Metallic Chrome
	9708141	Chocolate		9708146	Chocolate		9708144	Chocolate
	9708221	Vanilla		9708226	Vanilla		9708224	Vanilla
	9707649	Wasabi/Citron		9707654	Wasabi/Citron		9707652	Wasabi/Citron
	9708299	Violet		9708304	Violet		9708302	Violet
	9709600	Blue Willow		9709595	Blue Willow		9709597	Blue Willow
	9709442	Gloss Cinnamon		9709437	Gloss Cinnamon		9709439	Gloss Cinnamon
	9709398	Mango		9709393	Mango		9709395	Mango
	9707139	Meyer Lemon		9707144	Meyer Lemon		9707142	Meyer Lemon
	9708877	Spicy Orange		9708872	Spicy Orange		9708874	Spicy Orange
	9709517	Dark Plum		9709512	Dark Plum		9709514	Dark Plum
	9709385	Reef Blue		9709380	Reef Blue		9709382	Reef Blue
	9709372	Surf Green		9709367	Surf Green		9709369	Surf Green
	9708286	Melon		9708291	Melon		9708289	Melon
	9709613	Persimmon		9709608	Persimmon		9709610	Persimmon
	9709664	Bing Cherry		9709659	Bing Cherry		9709661	Bing Cherry
	9709688	Green Apple		9709683	Green Apple		9709685	Green Apple
	9709746	Cornflower Blue		9709741	Cornflower Blue		9709743	Cornflower Blue
	9709734	Clementine		9709729	Clementine		9709731	Clementine
	9709891	WS Green		9709886	WS Green		9709888	WS Green
	9709903	Buttercup		9709898	Buttercup		9709900	Buttercup
	W10121193	Silver Metallic		W10121188	Silver Metallic		W10121190	Silver Metallic
	W10140788	Bayleaf		W10140783	Bayleaf		W10140785	Bayleaf
	W10140801	Boysenberry		W10140796	Boysenberry		W10140798	Boysenberry
	W10181821	French Blue		W10181816	French Blue		W10181818	French Blue
	W10181807	Grass Green		W10181802	Grass Green		W10181804	Grass Green
	W10181794	Sunshine Yellow		W10181789	Sunshine Yellow		W10181791	Sunshine Yellow
	W10193501	Aqua Sky		W10193496	Aqua Sky		W10193498	Aqua Sky
	W10193514	Pear		W10193509	Pear		W10193511	Pear
2		Trim Band						
	9706630	Black/Silver						
	9706632	Almond Creme						
	9706659	White On White						

FOR ORDERING INFORMATION REFER TO PARTS PRICE LIST

COLOR VARIATIONS PARTS

For Models: KSM150PS__0, 4KSM150PS__0

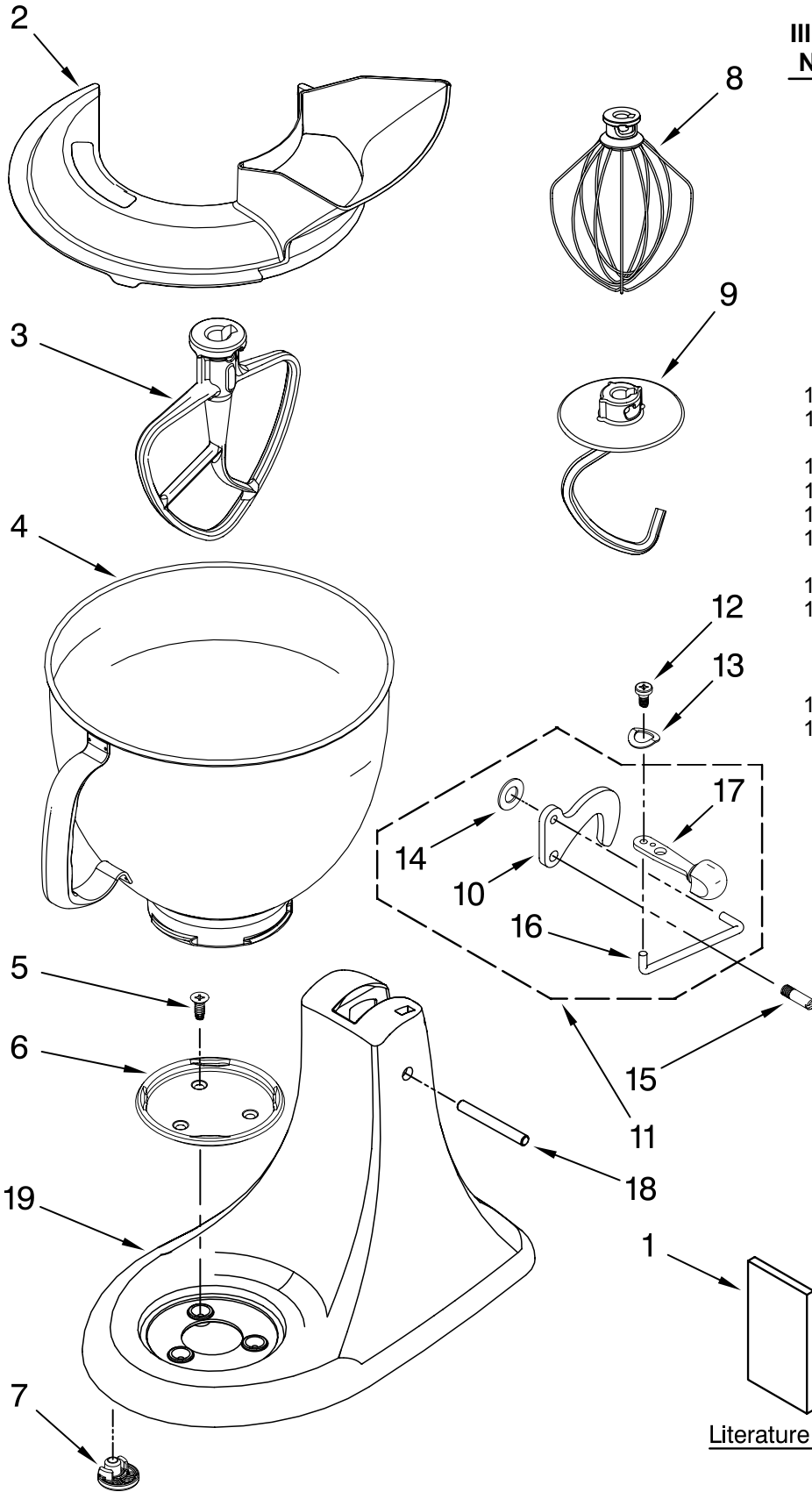
Illus. No.	Part No.	DESCRIPTION	Illus. No.	Part No.	DESCRIPTION
5		Lower Gearcase	6		Pedestal
	240350-4	White		240151-1	White
	9707162	Crystal Blue		9707160	Crystal Blue
	240350-31	Cobalt Blue		240151-8	Cobalt Blue
	9707123	Grape		9707121	Grape
	240350-86	Imperial Gray		240151-21	Imperial Gray
	9707103	Imperial Black		9707101	Imperial Black
	9706792	Cranberry		9706791	Cranberry
	240350-56	Onyx Black		240151-13	Onyx Black
	240350-46	Empire Green		240151-11	Empire Green
	240350-62	Almond Creme		240151-15	Almond Creme
	9706690	Glacier Blue		9706687	Glacier Blue
	9707659	Ice		9707657	Ice
	9706819	Lavender		9706818	Lavender
	240350-84	Empire Red		240151-20	Empire Red
	240350-82	Majestic Yellow		240151-19	Majestic Yellow
	9707149	Lemon		9707147	Lemon
	9706471	Pink		9706467	Pink
	9706832	Pistachio		9706831	Pistachio
	9707430	Martha Green		9707428	Martha Green
	9706911	Caviar		9705237	Caviar
	9707136	Sunflower		9707134	Sunflower
	9706845	Tangerine		9706844	Tangerine
	9706662	Metallic Chrome		9706682	Metallic Chrome
	9708138	Chocolate		9708136	Chocolate
	9708218	Vanilla		9708216	Vanilla
	9707646	Wasabi/Citron		9707644	Wasabi/Citron
	9708296	Violet		9708294	Violet
	9709603	Blue Willow		9709605	Blue Willow
	9709445	Gloss Cinnamon		9709447	Gloss Cinnamon
	9709401	Mango		9709403	Mango
	9707136	Meyer Lemon		9707134	Meyer Lemon
	9708880	Spicy Orange		9708882	Spicy Orange
	9709520	Dark Plum		9709522	Dark Plum
	9709388	Reef Blue		9709390	Reef Blue
	9709375	Surf Green		9709377	Surf Green
	9708283	Melon		9708281	Melon
	9709616	Persimmon		9709618	Persimmon
	9709667	Bing Cherry		9709669	Bing Cherry
	9709691	Green Apple		9709693	Green Apple
	9709749	Cornflower Blue		9709751	Cornflower Blue
	9709737	Clementine		9709739	Clementine
	9709894	WS Green		9709896	WS Green
	9709906	Buttercup		9709908	Buttercup
	W10121196	Silver Metallic		W10121198	Silver Metallic
	W10140791	Bayleaf		W10140793	Bayleaf
	W10140804	Boysenberry		W10140806	Boysenberry
	W10181824	French Blue		W10181826	French Blue
	W10181810	Grass Green		W10181812	Grass Green
	W10181797	Sunshine Yellow		W10181799	Sunshine Yellow
	W10193504	Aqua Sky		W10193506	Aqua Sky
	W10193517	Pear		W10193519	Pear

Colors Subject To Change.
Any Color Not Listed is
No Longer Available.
If Additional Colors Are Added,
This Page Will Be Updated.

FOR ORDERING INFORMATION REFER TO PARTS PRICE LIST

BASE AND PEDESTAL UNIT

For Models: KSM150PS__0, 4KSM150PS__0



Illus. No.	Part No.	DESCRIPTION
1		Literature Parts
	9709785	Use & Care Guide
	8212010	Repair Parts List
2	9709923	Shield, Pouring
3		Beater, Flat
	9708472	White, Coated
4	9706619	Bowl, 5 Qt.
5	3400020	Screw
6	W10191926	Screw Cap Kit
7	9709707	Foot, Base
8	9706446	Whip, Wire
9	9708471	Hook, Dough
10	9709055	Latch
11	24452	Latch, Link & Lever
12	110679	Screw, Pivot
13	116241	Washer, Spring
14	8533912	Washer
15	103993	Screw, Latch
		Bearing
16	24450	Link, Latch
17		Lever, Latch
	9709280	Black
	242928-2	White (Storm Gray)
	242928-3	Buff
18	16910	Pin, Hinge
19	*	Pedestal

**REFER TO PAGES 2 thru 4

Literature Parts

FOR ORDERING INFORMATION REFER TO PARTS PRICE LIST

CASE, GEARING AND PLANETARY UNIT

For Models: KSM150PS__0, 4KSM150PS__0

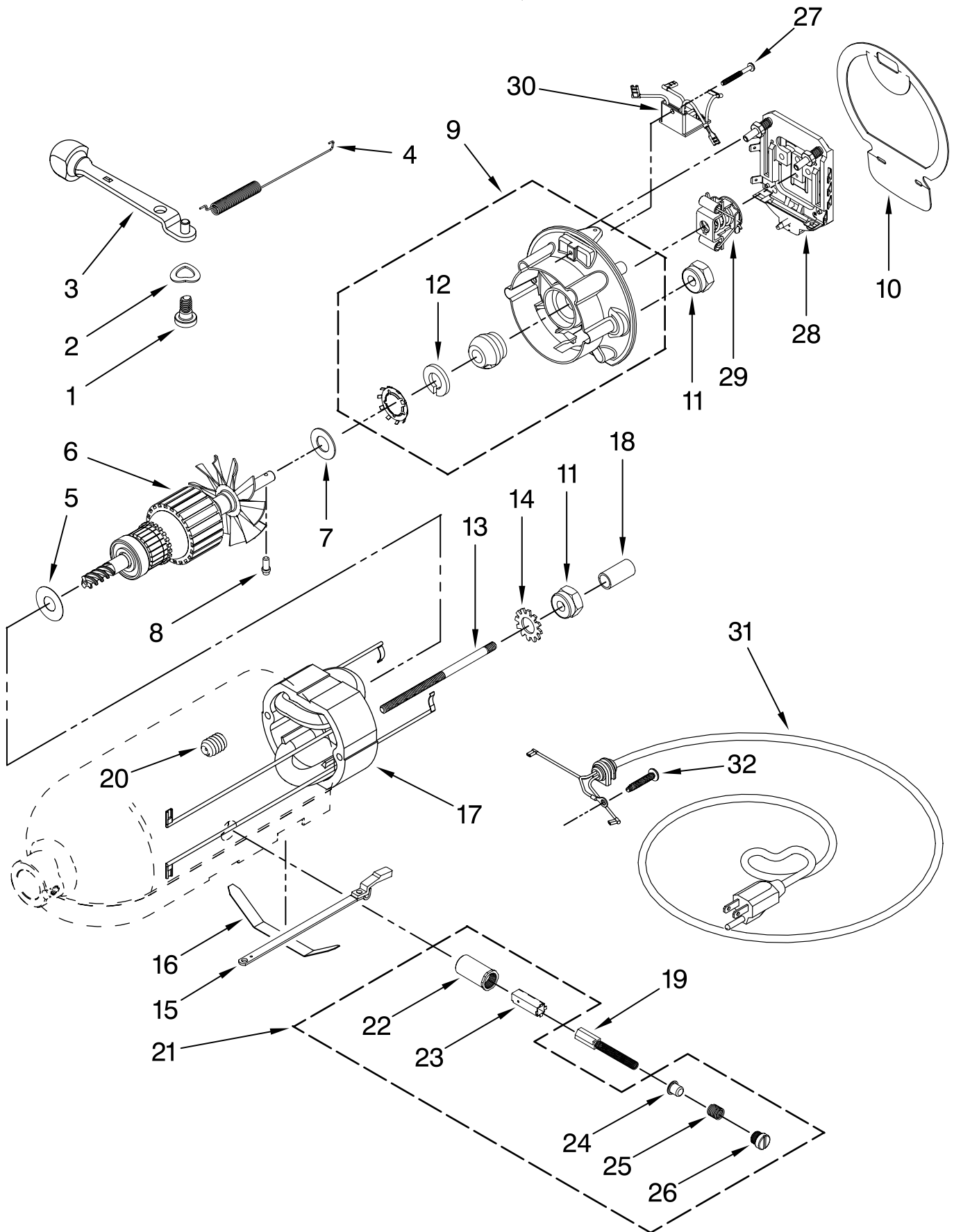
Illus. No.	Part No.	DESCRIPTION
1	**	Gearcase Motor Housing
2		Cap, Attachment Hub
	242765-2	Chrome
	242765-4	White
	242765-5	Almond Creme
3		Thumb Screw
	9709194	Black
	240374-2	White (Storm Gray)
	240374-3	Buff
4	**	Band, Trim
5	3180161	Washer
6	W10112253	Worm Gear
7	240308	Worm Gear Bracket And Bearing
8	9705444	Pin
9	240210-2	Shaft & Pinion
10	9705130	Gear, Attachment Hub Level
11	9709627	Bevel Pinion Center Gear
12	240026	Shaft, Vertical Center
13	240018-1	Pin (Vertical Center Shaft)
14	9705443	Pin, Groove
15	4162324	Gasket, Transmissn
16	67500-55	O-Ring
17	3180163	Washer
18	**	Lower Gear Case
19	103994	Screw
20	4176067	Agitator Shaft
21	9703438	Ring
22	9704677	Pin, Groove
23	4162914	Screw
24	**	Cover, End
25	311932	Screw
26	3400022	Screw
27	240309-2	Worm Gear Bracket and Gear
28	4160474	Center Shaft & O-Ring
29	8533914	Washer, Spring Lock
30	3400025	Screw
31	3400203	Screw, Set
32	9703903	Pinion, Gear Agitator Shaft
33	9706090	Washer
34	**	Planetary
35	240285	Ring, Planetary Drip
36	89411	Screw, Adjusting
37	9703904	Gear, Internal

**Refer to Pages 2 thru 4

FOR ORDERING INFORMATION REFER TO PARTS PRICE LIST

MOTOR AND CONTROL PARTS

For Models: KSM150PS__0, 4KSM150PS__0



FOR ORDERING INFORMATION REFER TO PARTS PRICE LIST

MOTOR AND CONTROL PARTS

For Models: KSM150PS__0, 4KSM150PS__0

Illus. No.	Part No.	DESCRIPTION
1	110679	Screw, Pivot
2	116241	Washer, Spring
3		Lever, Speed Control Assy
	9709276	Black
	3184194	White on White
	3184195	Almond Creme
4	3183680	Spring, Control Plate
5	9704324	Washer, Ball Bearing (Front)
6	9708315	Armature & Bearing
7	3180162	Washer
8	16998	Stud, Governor Drive
9	3180526	Bracket, Bearing Assembly
10	3184356	Seal, End
11	W10131078	Nut
12	3180238	Washer
13	240769	Screw
14	W10068270	Washer
15	3184176	Speed Link & Cam
16	240205	Spring, Flat
17	9702695	Field Assembly
18	4162634	Sleeve, Motor Stud
19	9706416	Brush, Carbon
20	9707926	Screw, Set
21	4162546	Brush Holder
22	3179908	Housing, Brush Holder
23	240680	Insert, Brush Holder
24	116286	Cap, Spring Seat
25	116287	Spring, Cap
26		Cap, Brush Holder
	3184212	Black
	3184211	White
	3184213	Almond Creme
27	W10068260	Screw
28	W10119326	Control Plate Assy
29	17830	Governor Assembly
30	9706595	Phase Control Brd
31		Cord, Power
	W10164882	White
	W10164883	Black
32	3184609	Screw, Self Tap

FOR ORDERING INFORMATION REFER TO PARTS PRICE LIST

ACCESSORY PARTS

For Models: KSM150PS__0, 4KSM150PS__0

Illus. No.	Part No.	DESCRIPTION	Illus. No.	Part No.	DESCRIPTION
FOLLOWING PARTS NOT ILLUSTRATED					
	4164839	Speed Disc (Service Tool)		4164750	Rotor Slicer/ Shredder(With 4 Standard Cones) Fine Shredder, Coarse Shredder, Thick Slicer,and Thin Slicer (RVSA)
	4160588	Grease, Planetary		9704568	Pouring Shield (KPS2CL)
	4164778	Mixer Attachment Pak (Includes Food Grinder (FGA), Food Strainer (FVSP), And Vegetable Slicer, (RVSA) (FPPA)		4164824	Pasta Maker Plates (SNPA)
	4164749	Food Grinder (FGA)		4164774	Fruit/Vegetable Strainer and Food Grinder (FVSFGA)
	8211924	Grain Mill (KGMA)		3180617	Cover, Decorative (Cotton Polyester)
	4164768	Pasta Maker And Food Grinder (Includes SNP Pasta Maker Plates) (SNFGA)		4162838	Food Tray (FT)
	4164775	Fruit/Vegetable Strainer Parts (Use With FGA Model Only) (FVSP)		4164748	Juicer (JE)
				4164747	Can Opener (CO)
				4164803	Sausage Stuffer Kit (SSA)
				8212519	Ice Cream Maker (KICA0WH0)
				3177924	Bowl Cover, Plastic Non- Sealing
				4163337	Bowl, Stainless With Handle
				3180262	Bowl, 3 Qt.
				4162160	Bowl, Satin Stainless

FOR ORDERING INFORMATION REFER TO PARTS PRICE LIST