

PARTS LIST

for

KitchenAid®

5 QT. STAND MIXER – SWISS

ARTISAN TILT HEAD

MODELS:

5KSM150PSSWH4 (White)
5KSM150PSSBU4 (Cobalt Blue)
5KSM150PSSGR4 (Imperial Grey)
5KSM150PSSOB4 (Onyx Black)
5KSM150PSSNK4 (Nickel)
5KSM150PSSER4 (Empire Red)
5KSM150PSSMY4 (Majestic Yellow)
5KSM150PSSPM4 (Pearl Metallic)

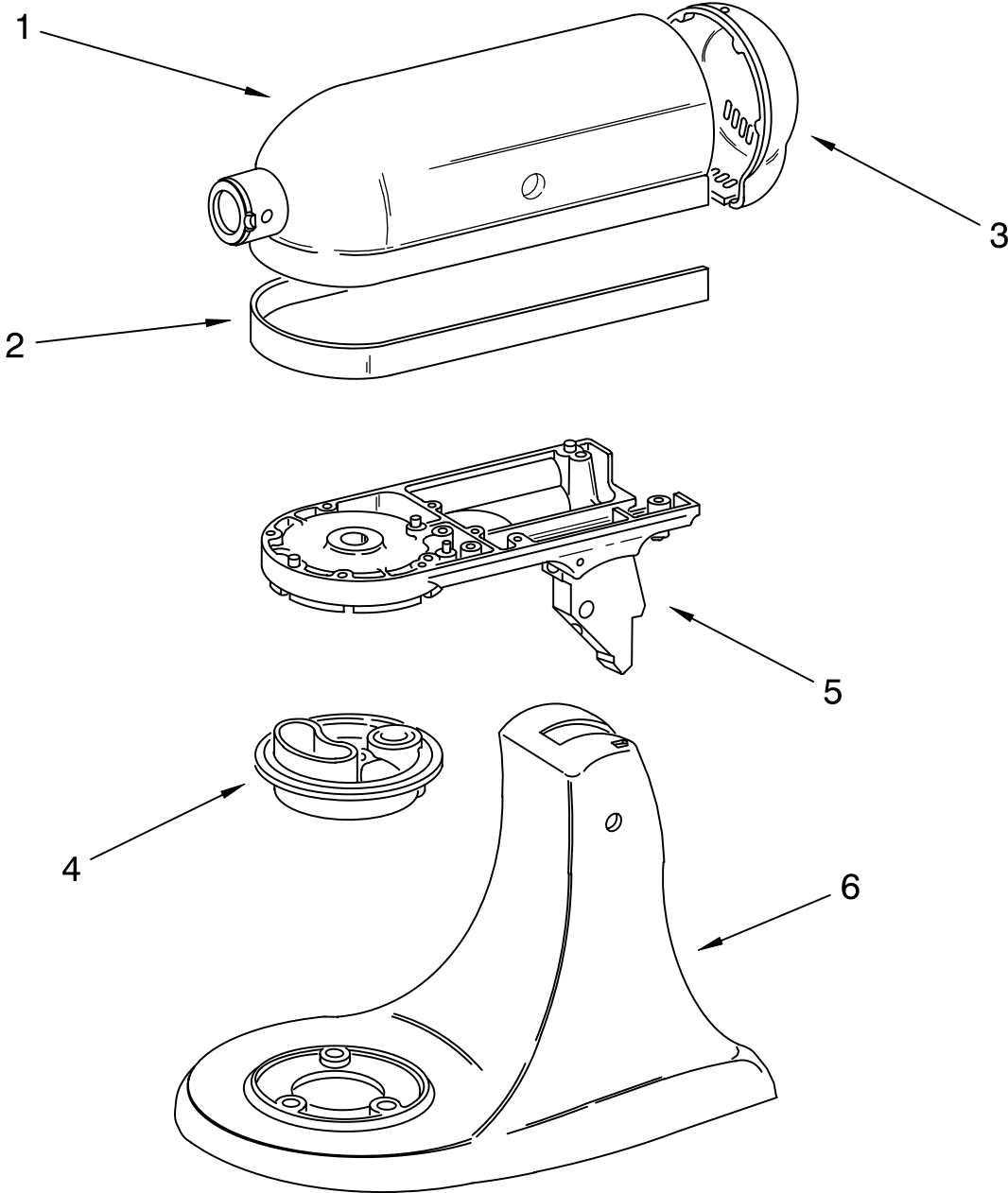


FOR CUSTOMER SATISFACTION ALWAYS USE
FACTORY SPECIFICATION PARTS



COLOR VARIATION PARTS

For Models: 5KSM150PSS_4



FOR ORDERING INFORMATION REFER TO PARTS PRICE LIST

COLOR VARIATION PARTS

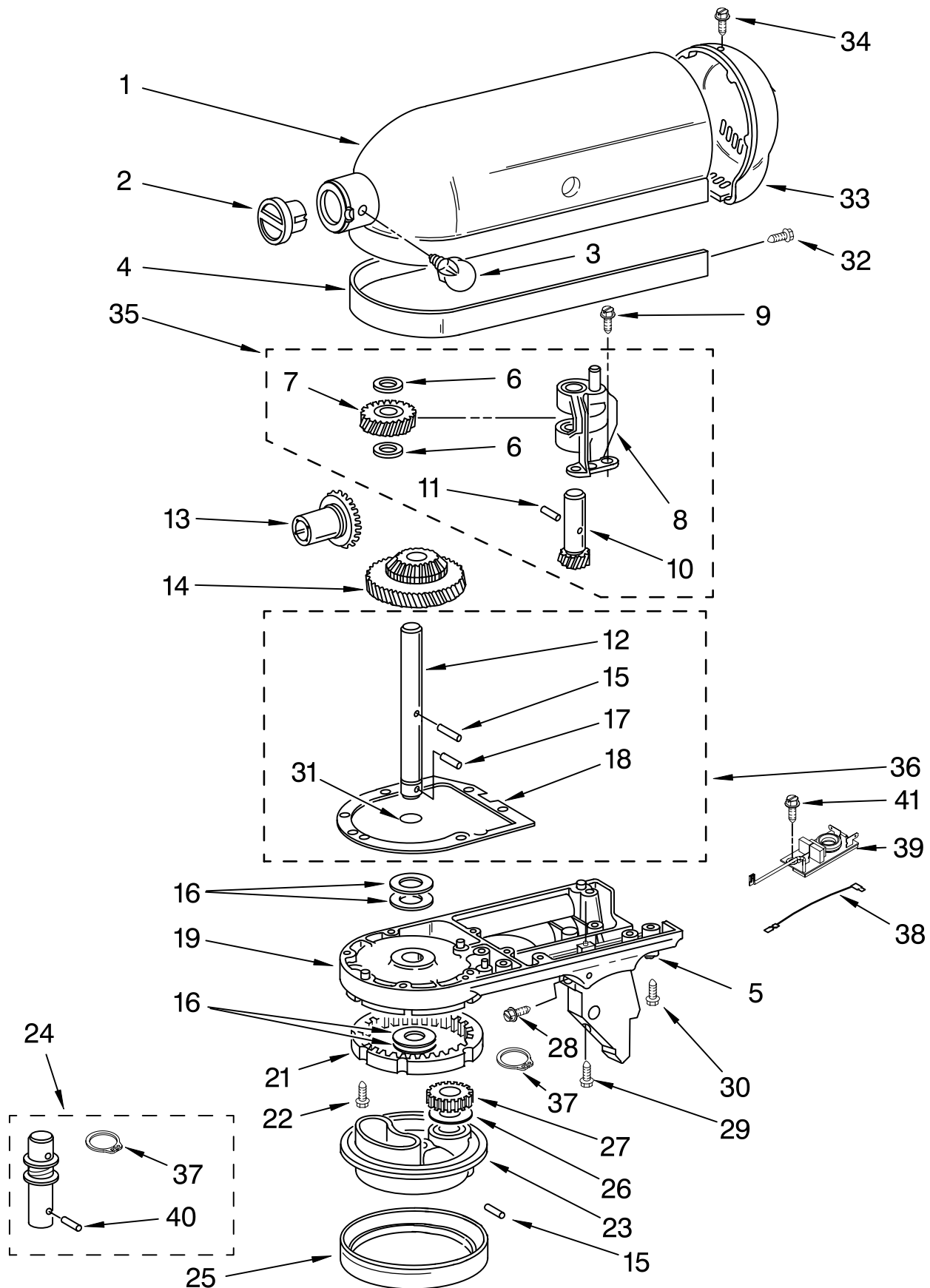
For Models: 5KSM150PSS__4

Illus.	Part	DESCRIPTION
No.	No.	
1		Motor Housing
	240291-1	White
	240291-7	Cobalt Blue
	240291-22	Imperial Grey
	240291-13	Onyx Black
	9706461	Nickel
	240291-21	Empire Red
	240291-20	Majestic Yellow
	W10128417	Pearl Metallic
2		Trim Band
	9707526	Black/Silver
3		End Cover
	240253-1	White
	240253-8	Cobalt Blue
	240253-23	Imperial Grey
	240253-14	Onyx Black
	9706268	Nickel
	240253-22	Empire Red
	240253-21	Majestic Yellow
	W10128412	Pearl Metallic
4		Planetary
	240286-1	White
	240286-10	Cobalt Blue
	240286-24	Imperial Grey
	240286-16	Onyx Black
	9706271	Nickel
	240286-23	Empire Red
	240286-22	Majestic Yellow
	W10128414	Pearl Metallic
5		Lower Gearcase
	240350-4	White
	9701420	Cobalt Blue
	240350-86	Imperial Grey
	240350-56	Onyx Black
	9706459	Nickel
	240350-91	Empire Red
	240350-93	Majestic Yellow
	W10128420	Pearl Metallic
6		Pedestal with Feet and Headlock
	3184273	White
	3184278	Cobalt Blue
	9703998	Imperial Grey
	3184275	Onyx Black
	9706456	Nickel
	3184280	Empire Red
	3184281	Majestic Yellow
	W10128423	Pearl Metallic

Colors Subject To Change.
Any Color Not Listed is
No Longer Available.
If Additional Colors Are Added,
This Page Will Be Updated.

CASE, GEARING AND PLANETARY UNIT

For Models: 5KSM150PSS_4



FOR ORDERING INFORMATION REFER TO PARTS PRICE LIST

CASE, GEARING AND PLANETARY UNIT

For Models: 5KSM150PSS__4

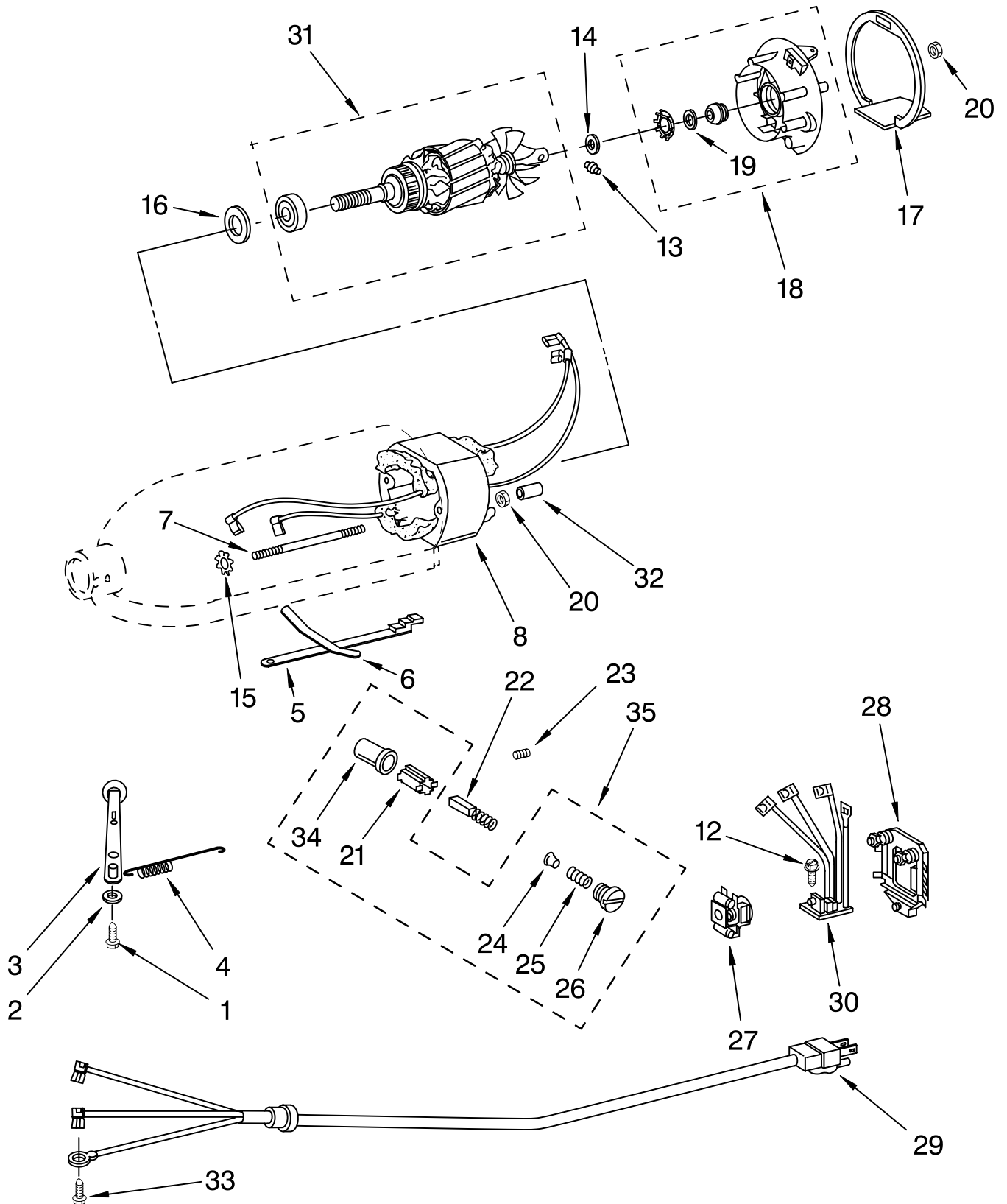
Illus. No.	Part No.	DESCRIPTION
1	**	Gearcase Motor Housing
2		Cap, Attachment Hub
3	242765-2	Chrome Thumb Screw
4	9709194	Black Band, Trim
5	8533914	Lock Washer
6	3180161	Washer
7	W10112253	Worm Gear
8	240308	Worm Gear Bracket And Bearing
9	3400022	Screw
10	240210-2	Gear, Shaft and Pinion
11	9705444	Pin
12	240026	Shaft, Vertical Center
13	9705130	Gear, Attachment Hub Bevel
14	9709627	Gear, Bevel Pinion and Center
15	240018-1	Pin, Agitator Shaft
16	3180163	Washer
17	9705443	Pin, Groove
18	4162324	Gasket, Transmission
19	**	Lower Gear Case
21	9703904	Gear, Internal
22	103994	Screw
23	**	Planetary
24	3184052	Agitator Shaft
25	240285-2	Polished Finish
	240285	Standard Finish
26	9706090	Washer
27	9703903	Gear, Pinion
28	89411	Screw, Adjusting
29	3400203	Screw, Set
30	3400025	Screw, Machine
31	67500-55	"O" Ring
32	311932	Screw
33	**	Cover, End
34	4162914	Screw
35	240309-2	Worm Gear Bracket and Gear
36	4160474	Center Shaft & "O" Ring
37	9703438	Ring, Retaining
38	9702311	Lead, Filter Control Board
39	9705132	RFI Filter
40	9704677	Pin, Groove
41	3184086	Screw

**Refer to Pages 2 & 3
Color Variation Parts

FOR ORDERING INFORMATION REFER TO PARTS PRICE LIST

MOTOR AND CONTROL PARTS

For Models: 5KSM150PSS_4



FOR ORDERING INFORMATION REFER TO PARTS PRICE LIST

MOTOR AND CONTROL PARTS

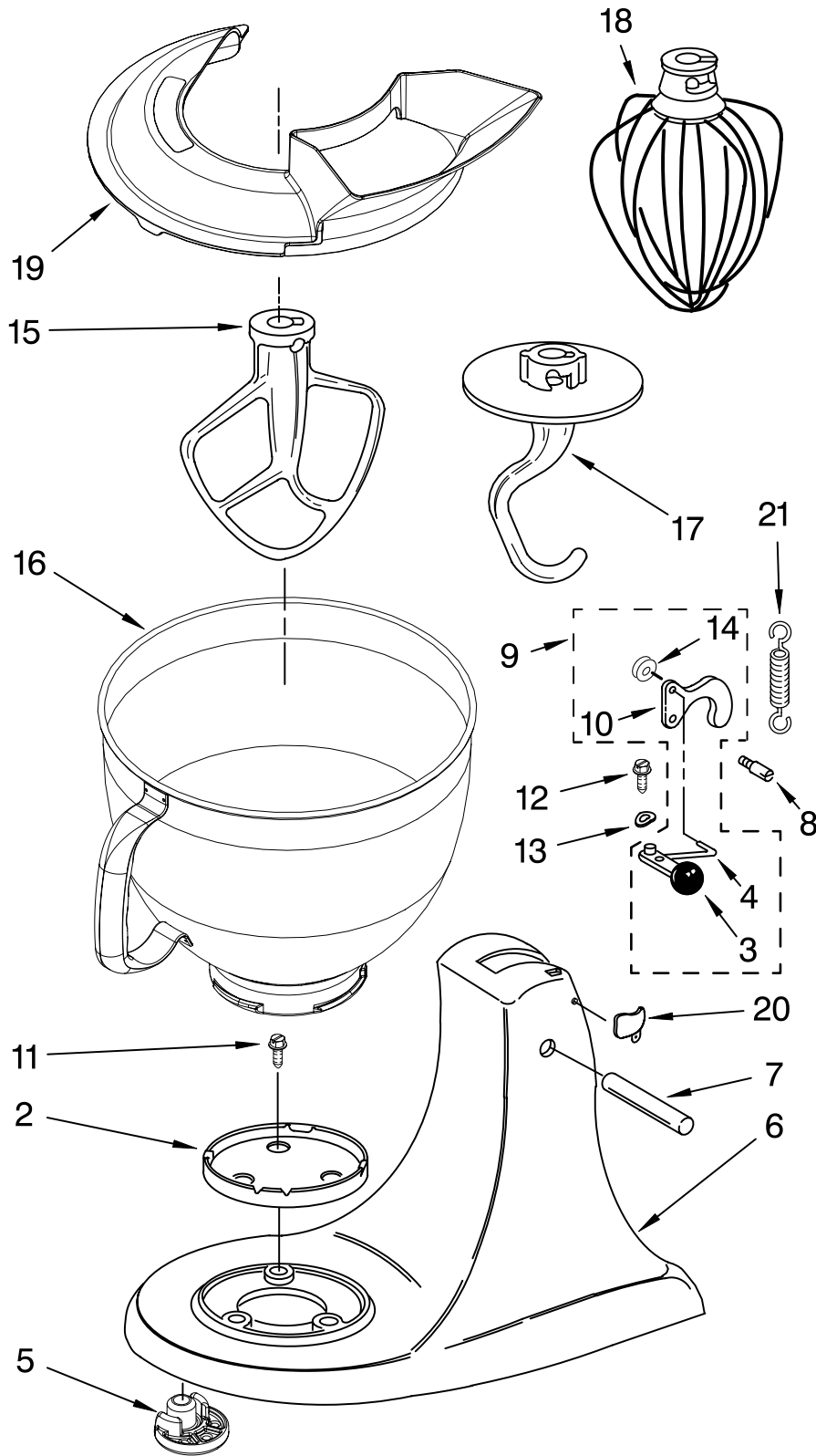
For Models: 5KSM150PSS__4

Illus. No.	Part No.	DESCRIPTION
1	110679	Screw, Pivot
2	116241	Washer, Spring
3		Control, Speed Assembly
	9709276	Black
4	3183680	Spring, Control Plate
5	3184176	Speed Link & Cam
6	240205	Spring, Flat
7	240769	Screw, Stator
8	9701670	Field Assembly
12	W10068260	Screw
13	16998	Stud, Governor Drive
14	3180162	Washer
15	W10068270	Washer
16	9704324	Washer, Ball Bearing (Front)
17	3184356	Seal, End
18	3180526	Bracket, Bearing Asm.
19	3180238	Washer, Felt
20	8533905	Nut, Machine
21	240680	Insert, Brush Holder
22	9706416	Brush, Carbon
23	9707926	Screw
24	116286	Cap, Spring Seat
25	116287	Spring, Cap
26		Cap, Brush Holder
	3184212	Black
27	17830	Governor Assembly
28	240904-2	Control Plate Assembly
29		Power Cord
	9704389	White
	9704390	Black
30	9706596	Phase Control Board
31	9708316	Armature & Bearing
32	4162634	Sleeve, Motor Stud
33	3184086	Screw
34	3179908	Housing, Brush Holder
35	4162546	Brush Holder

FOR ORDERING INFORMATION REFER TO PARTS PRICE LIST

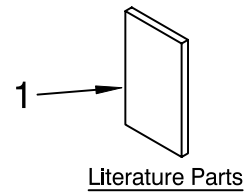
BASE AND PEDESTAL UNIT

For Models: 5KSM150PSS_4



Illus. No.	Part No.	DESCRIPTION
1		Literature Parts
	9709851	Use & Care Guide
	8212384	Repair Parts List
2	4162529	Screw Cap Kit
3		Lever, Latch
	9709267	Black
4	24450	Link, Latch
5	9709707	Foot, Base
6	**	Pedestal
7	16910	Pin, Hinge
8	103993	Screw, Latch Bearing
9	3184200	Latch, Link Assy
10	9709055	Latch
11	3400020	Screw
12	110679	Screw, Pivot
13	116241	Washer, Spring
14	8533912	Washer
15	9708472	Beater, Flat
16	9706619	Bowl, 5 QT.
17	9708471	Hook, Dough
18	9706446	Whip, Wire
19	9709923	Shield, Pouring
20		Head Lock
	3184262	White
	3184264	Black
21	3183690	Spring, Lock Lever

**REFER TO PAGES 2 & 3.



FOR ORDERING INFORMATION REFER TO PARTS PRICE LIST

ACCESSORY PARTS

For Models: 5KSM150PSS__4

Illus. No.	Part No.	DESCRIPTION
	4164839	Speed Disc (Service Tool)
	4160588	Grease, Planetary
	4164778	Mixer Attachment Pak (Includes Food Grinder (FG-A), Food Strainer (FVSP), And Vegetable Slicer, (RVS-A) (FPP-A)
	4164749	Food Grinder (FG-A)
	8211924	Grain Mill (KGMA)
	4164768	Pasta Maker And Food Grinder (Includes SNP Pasta Maker Plates) (SN/FG-A)
	4164775	Fruit/Vegetable Strainer Parts (Use With FG-A Model Only) (FVSP)
	4164750	Rotor Slicer/ Shredder(With 4 Standard Cones) Fine Shredder, Coarse Shredder, Thick Slicer, and Thin Slicer (RVS-A)
	9704568	Pouring Shield (KPS2CL)
	4164824	Pasta Maker Plates (SNP-A)
	4164774	Fruit/Vegetable Strainer and Food Grinder (FVS-FG-A)
	3180617	Cover, Decorative (Cotton Polyester)
	4162838	Food Tray (FT)
	4164748	Juicer (JE)
	4164747	Can Opener (CO)
	4164803	Sausage Stuffer Kit (SSA)
	8212632	Ice Cream Maker (5KICA)
	3177924	Bowl Cover, Plastic Non- Sealing
	4163337	Bowl, Stainless With Handle
	3180262	Bowl, 3 Qt.
	4162160	Bowl, Satin Stainless

FOR ORDERING INFORMATION REFER TO PARTS PRICE LIST