

# PARTS LIST

for

# **KitchenAid®**

## **5 QT. STAND MIXER**

### **ARTISAN TILT HEAD**

#### **MODELS:**

5KSM150PSSWH0 (White)  
5KSM150PSSBU0 (Cobalt Blue)  
5KSM150PSSGR0 (Imperial Grey)  
5KSM150PSSOB0 (Onyx Black)  
5KSM150PSSNK0 (Nickel)  
5KSM150PSSER0 (Empire Red)  
5KSM150PSSMY0 (Majestic Yellow)

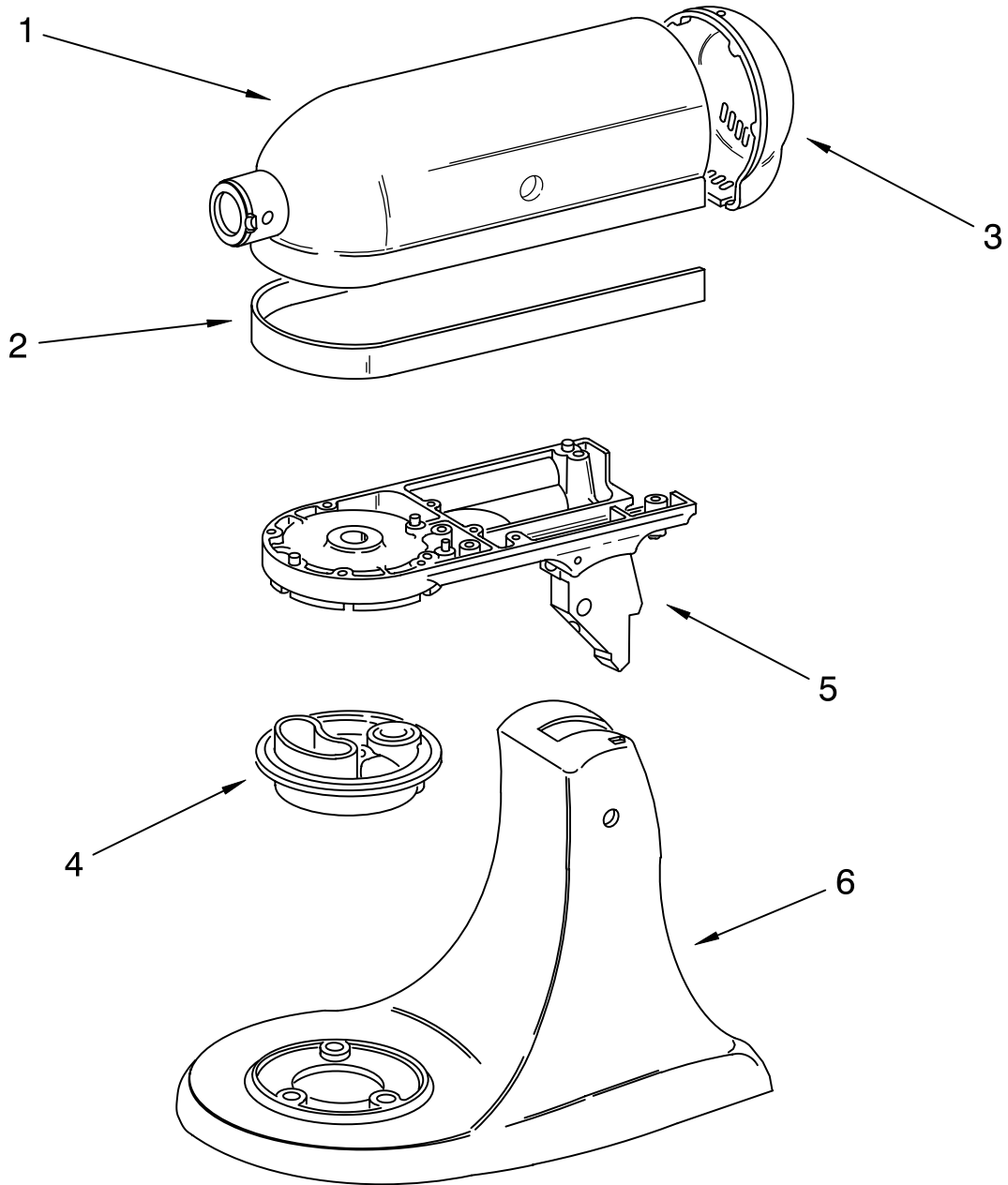


FOR CUSTOMER SATISFACTION ALWAYS USE  
FACTORY SPECIFICATION PARTS



# COLOR VARIATION PARTS

For Models: 5KSM150PSS\_\_0



FOR ORDERING INFORMATION REFER TO PARTS PRICE LIST

# COLOR VARIATION PARTS

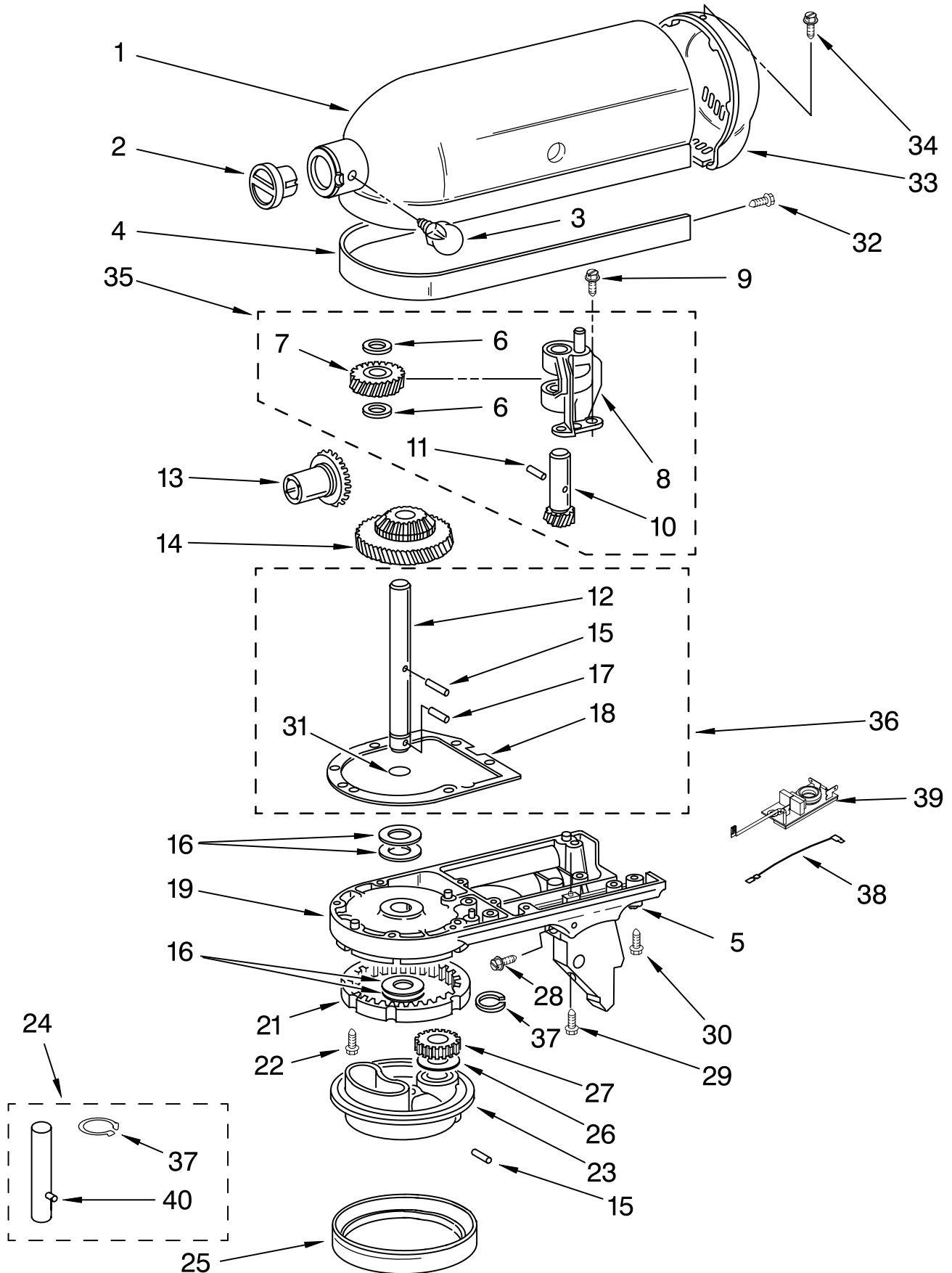
For Models: 5KSM150PSS\_\_0

Illus. No.	Part No.	DESCRIPTION
1		Motor Housing
	240291-1	White
	240291-7	Cobalt Blue
	240291-22	Imperial Grey
	240291-13	Onyx Black
	9706461	Nickel
	240291-21	Empire Red
2	240291-20	Majestic Yellow
		Trim Band
3	9707526	Black/Silver
		End Cover
4	240253-1	White
	240253-8	Cobalt Blue
	240253-23	Imperial Grey
	240253-14	Onyx Black
	9706268	Nickel
	240253-22	Empire Red
	240253-21	Majestic Yellow
5		Planetary
	240286-1	White
	240286-10	Cobalt Blue
	240286-24	Imperial Grey
	240286-16	Onyx Black
	9706271	Nickel
	240286-23	Empire Red
6	240286-22	Majestic Yellow
		Lower Gearcase
	240350-4	White
	9701420	Cobalt Blue
	240350-86	Imperial Grey
	240350-56	Onyx Black
	9706459	Nickel
240350-91	Empire Red	
7	240350-93	Majestic Yellow
		Pedestal
	9701762	White
	9701768	Cobalt Blue
	9703247	Imperial Grey
	9701765	Onyx Black
	9706457	Nickel
9703245	Empire Red	
	9703246	Majestic Yellow

Colors Subject To Change.  
 Any Color Not Listed is  
 No Longer Available.  
 If Additional Colors Are Added,  
 This Page Will Be Updated.

# CASE, GEARING AND PLANETARY UNIT

For Models: 5KSM150PSS\_0



FOR ORDERING INFORMATION REFER TO PARTS PRICE LIST

# CASE, GEARING AND PLANETARY UNIT

For Models: 5KSM150PSS\_\_0

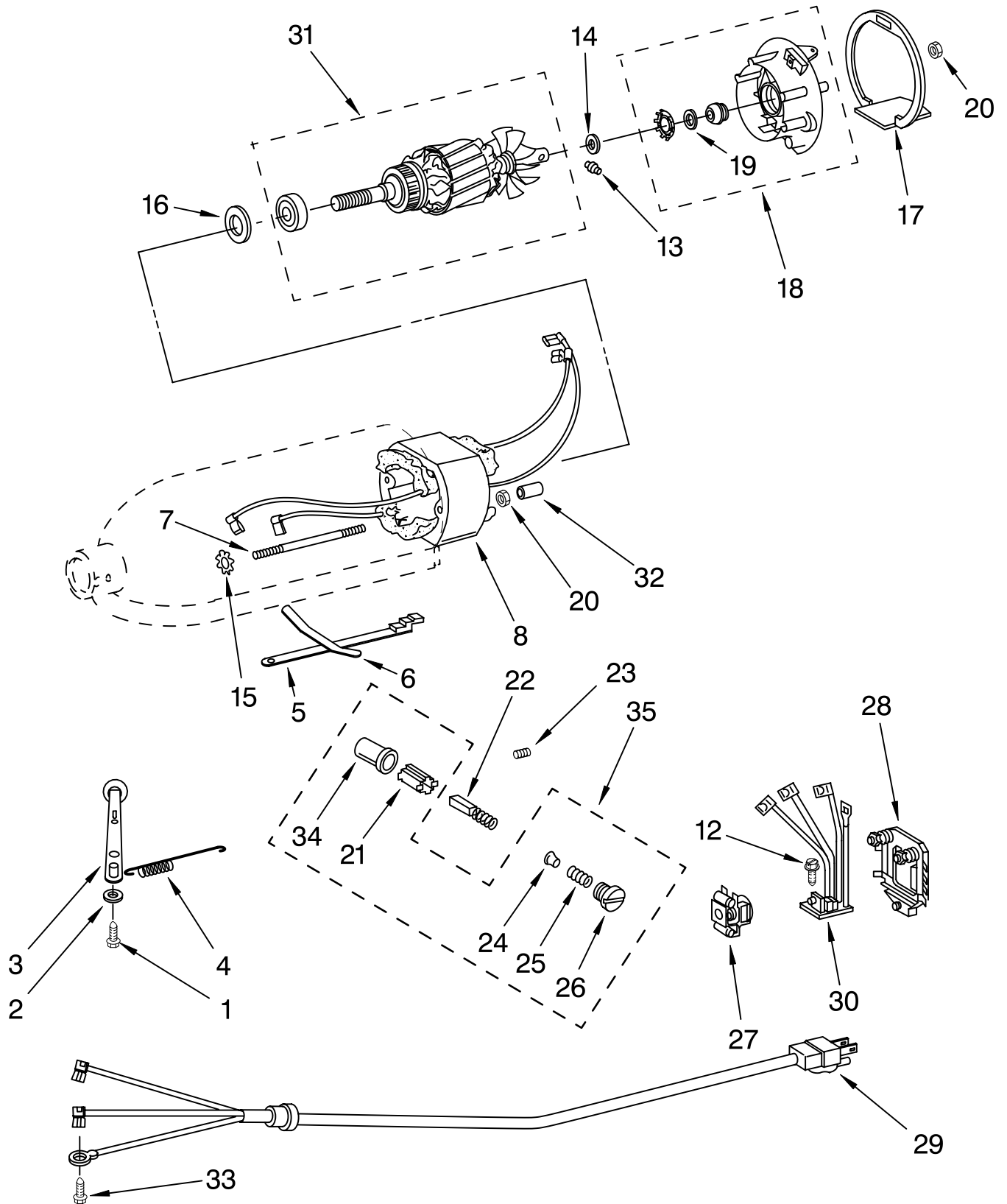
Illus. No.	Part No.	DESCRIPTION
1	**	Gearcase Motor Housing
2		Cap, Attachment Hub
3	242765-2	Chrome Thumb Screw
4	9709194	Black Band, Trim
5	8533914	Lock Washer
6	3180161	Washer
7	4162897	Worm Gear
8	240308	Worm Gear Bracket And Bearing
9	3400022	Screw
10	240210-2	Shaft & Pinion
11	9705444	Pin
12	240026	Shaft, Vertical Center
13	9703907	Gear, Attachment Hub Bevel
14	9703905	Bevel Pinion
15	240018-1	Pin, Agitator Shaft
16	3180163	Washer
17	9705443	Pin, Groove
18	4162324	Gasket, Transmission Case
19	**	Lower Gear Case
21	9703904	Gear, Internal
22	3400020	Screw
23	**	Planetary
24	3184052	Agitator Shaft
25		Ring, Planetary
	240285-2	Polished Finish
	240285	Standard Finish
26	3180163	Washer
27	9703903	Pinion, Gear
28	89411	Screw
29	3400203	Screw, Set
30	3400025	Screw, Machine
31	67500-55	"O" Ring
32	311932	Screw
33	**	Cover, End
34	4162914	Screw
35	240309-2	Worm Gear Bracket and Gear
36	4160474	Center Shaft & "O" Ring
37	9703438	Ring
38	9702311	Lead, Filter Control Board
39	9705132	RFI Filter
40	9704677	Pin, Groove

\*\*Refer to Page 2  
Color Variation Parts

FOR ORDERING INFORMATION REFER TO PARTS PRICE LIST

# MOTOR AND CONTROL PARTS

For Models: 5KSM150PSS\_\_0



FOR ORDERING INFORMATION REFER TO PARTS PRICE LIST

# MOTOR AND CONTROL PARTS

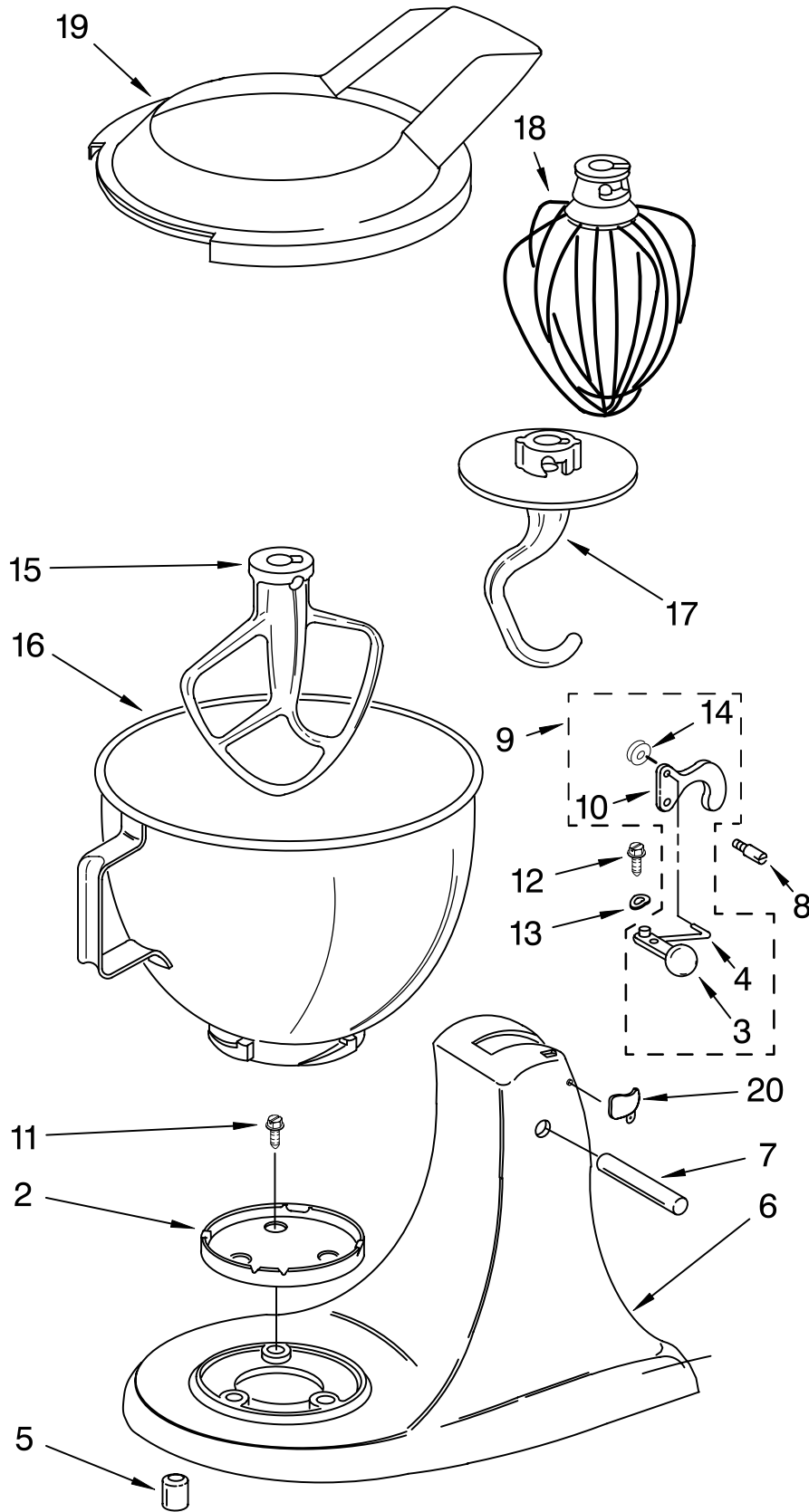
For Models: 5KSM150PSS\_\_0

<b>Illus. No.</b>	<b>Part No.</b>	<b>DESCRIPTION</b>
1	110679	Screw, Pivot
2	116241	Washer, Spring
3		Switch Lever And Stud
	9709276	Black
4	3183680	Spring, Control Plate
5	3184176	Speed Link & Cam
6	240205	Spring, Flat
7	240769	Screw, Stator
8	9701670	Field Assembly
12	W10068260	Screw
13	16998	Stud, Governor Drive
14	3180162	Washer
15	W10068270	Washer
16	9704324	Washer, Ball Bearing (Front)
17	3184356	Seal, End
18	3180526	Bracket, Bearing Asm.
19	3180238	Washer
20	8533905	Nut, Machine
21	240680	Insert, Brush Holder
22	9706416	Brush, Carbon
23	9707926	Screw
24	116286	Cap, Spring Seat
25	116287	Spring, Cap
26		Cap, Brush Holder
	3184212	Black
27	17830	Governor Assembly
28	240904-2	Control Plate Assembly
29		Power Cord
	9704389	White
	9704390	Black
30	9706596	Phase Control Board
31	9708316	Armature & Bearing
32	4162634	Sleeve, Motor Stud
33	3184086	Screw
34	3179908	Housing, Brush Holder
35	4162546	Brush Holder

FOR ORDERING INFORMATION REFER TO PARTS PRICE LIST

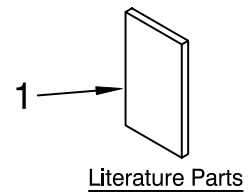
# BASE AND PEDESTAL UNIT

For Models: 5KSM150PSS\_\_0



Illus. No.	Part No.	DESCRIPTION
1		Literature Parts
	9709309	Use & Care Guide
	8212362	Repair Parts List
2	4162529	Screw Cap Kit
3		Lever, Latch
	9709267	Black
4	24450	Link, Latch
5	115792	Foot, Base
6	**	Pedestal
7	16910	Pin, Hinge
8	103993	Screw, Latch Bearing
9	3184200	Latch, Link Assy
10	9709055	Latch
11	3400020	Screw
12	110679	Screw, Pivot
13	116241	Washer, Spring
14	8533912	Washer
15		Beater, Flat
	9708472	Coated, White
16	9706619	Bowl, 5 QT.
17	9708471	Dough Hook
18	9706446	Wire Whip
19	3177975	Pouring Shield Head Lock
20		
	3184262	White
	3184264	Black

\*\*REFER TO PAGES 2 & 3.



FOR ORDERING INFORMATION REFER TO PARTS PRICE LIST



# ACCESSORY PARTS

For Models: 5KSM150PSS\_\_0

<b>Illus. No.</b>	<b>Part No.</b>	<b>DESCRIPTION</b>
	4164839	Speed Disc (Service Tool)
	4160588	Grease, Planetary
	4164778	Mixer Attachment Pak (Includes Food Grinder (FG-A), Food Strainer (FVSP), And Vegetable Slicer, (RVS-A) (FPP-A)
	4164749	Food Grinder (FG-A)
	8211924	Grain Mill (KGMA)
	4164768	Pasta Maker And Food Grinder (Includes SNP Pasta Maker Plates) (SN/FG-A)
	4164775	Fruit/Vegetable Strainer Parts (Use With FG-A Model Only) (FVSP)
	4164750	Rotor Slicer/ Shredder(With 4 Standard Cones) Fine Shredder, Coarse Shredder, Thick Slicer,and Thin Slicer (RVS-A)
	9704568	Pouring Shield (KPS2CL)
	4164824	Pasta Maker Plates (SNP-A)
	4164774	Fruit/Vegetable Strainer and Food Grinder (FVS-FG-A)
	3180617	Cover, Decorative (Cotton Polyester)
	4162838	Food Tray (FT)
	4164748	Juicer (JE)
	4164747	Can Opener (CO)
	4164803	Sausage Stuffer Kit (SSA)
	9707963	Ice Cream Maker Attachment (KICA)
	3177924	Bowl Cover, Plastic Non- Sealing
	4163337	Bowl, Stainless With Handle
	3180262	Bowl, 3 Qt.
	4162160	Bowl, Satin Stainless

FOR ORDERING INFORMATION REFER TO PARTS PRICE LIST