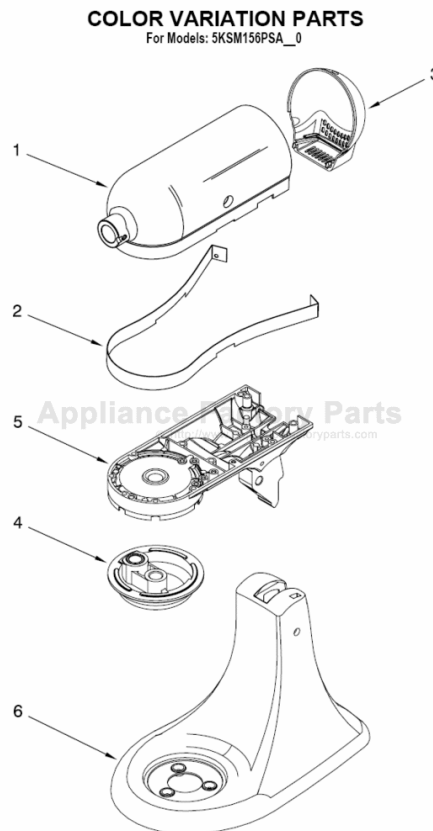


This Owner's Manual is provided and hosted by [Appliance Factory Parts](#).



KITCHENAID 5KSM45EWH4 Owner's Manual

[Shop genuine replacement parts for KITCHENAID
5KSM45EWH4](#)



[Find Your KITCHENAID Mixer Parts - Select From 532 Models](#)

----- Manual continues below -----

PARTS LIST

for

KitchenAid®

4 1/2 QT. STAND MIXER

EUROPEAN – TILT

MODEL:

5KSM45EWH4 (White)



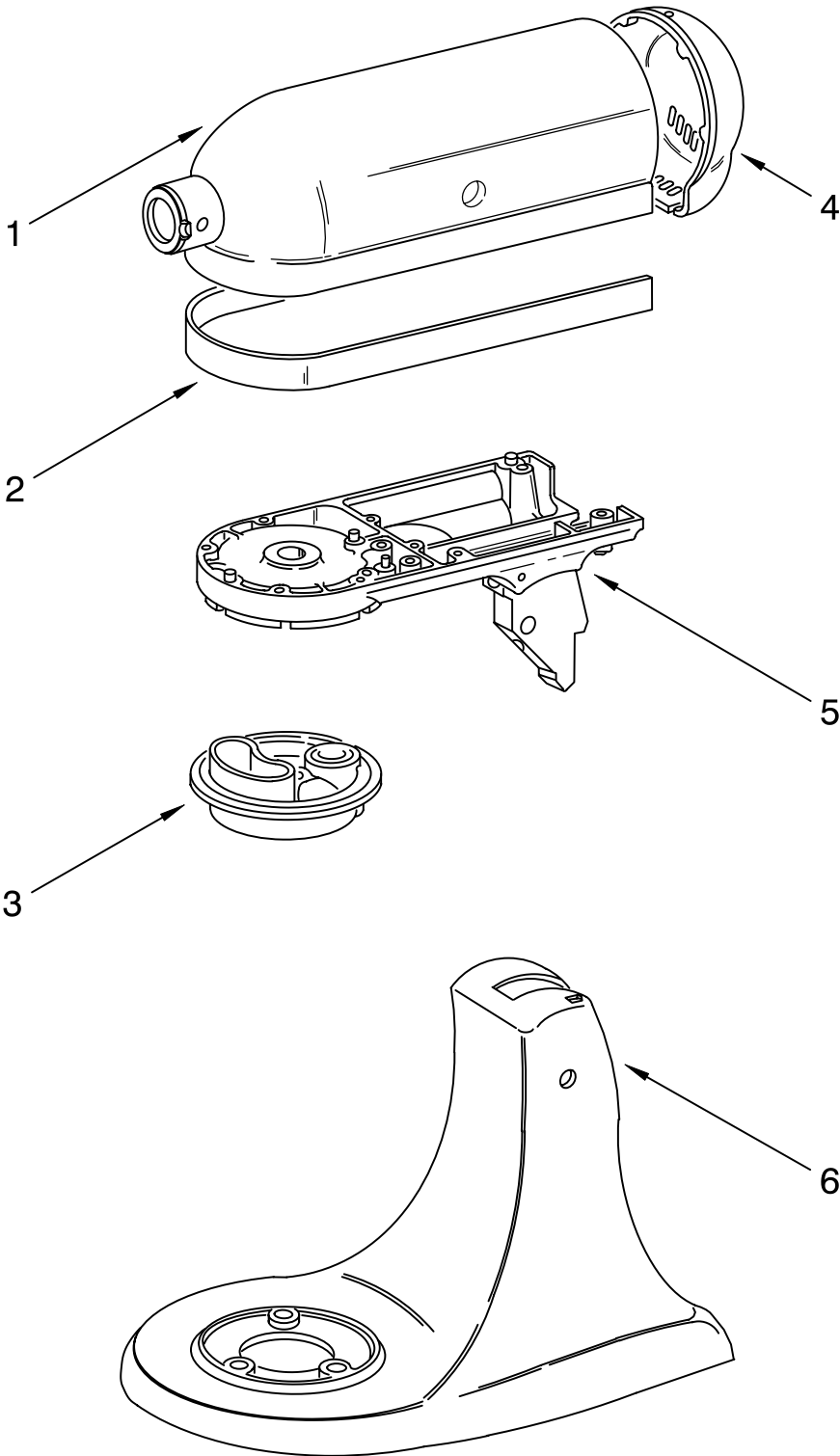
FOR CUSTOMER SATISFACTION ALWAYS USE
FACTORY SPECIFICATION PARTS



COLOR VARIATION PARTS

For Variations of Model: 5KSM45E__4

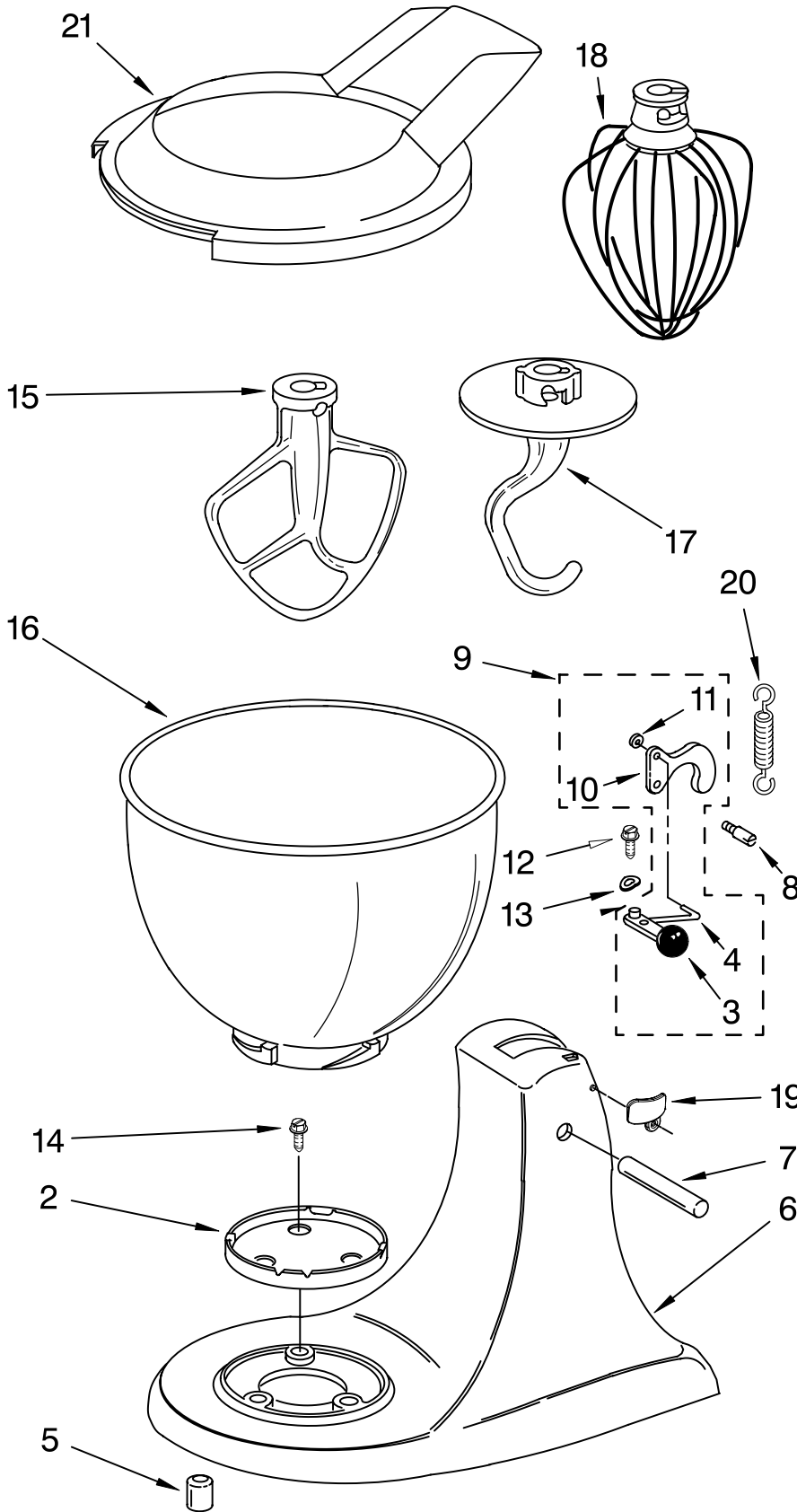
| Illus. No. | Part No. | DESCRIPTION |
|------------|----------|--------------------------|
| 1 | 240291-1 | Motor Housing White |
| 2 | 9704649 | Trim Band Black |
| 3 | 240286-1 | Planetary White |
| 4 | 240253-1 | End Cover White |
| 5 | 240350-4 | Lower Gearcase White |
| 6 | 3184273 | Pedestal & Foot White |



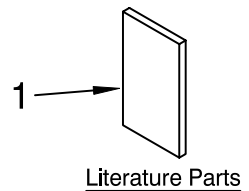
FOR ORDERING INFORMATION REFER TO PARTS PRICE LIST

BASE AND PEDESTAL UNIT

For Variations of Model: 5KSM45E__4



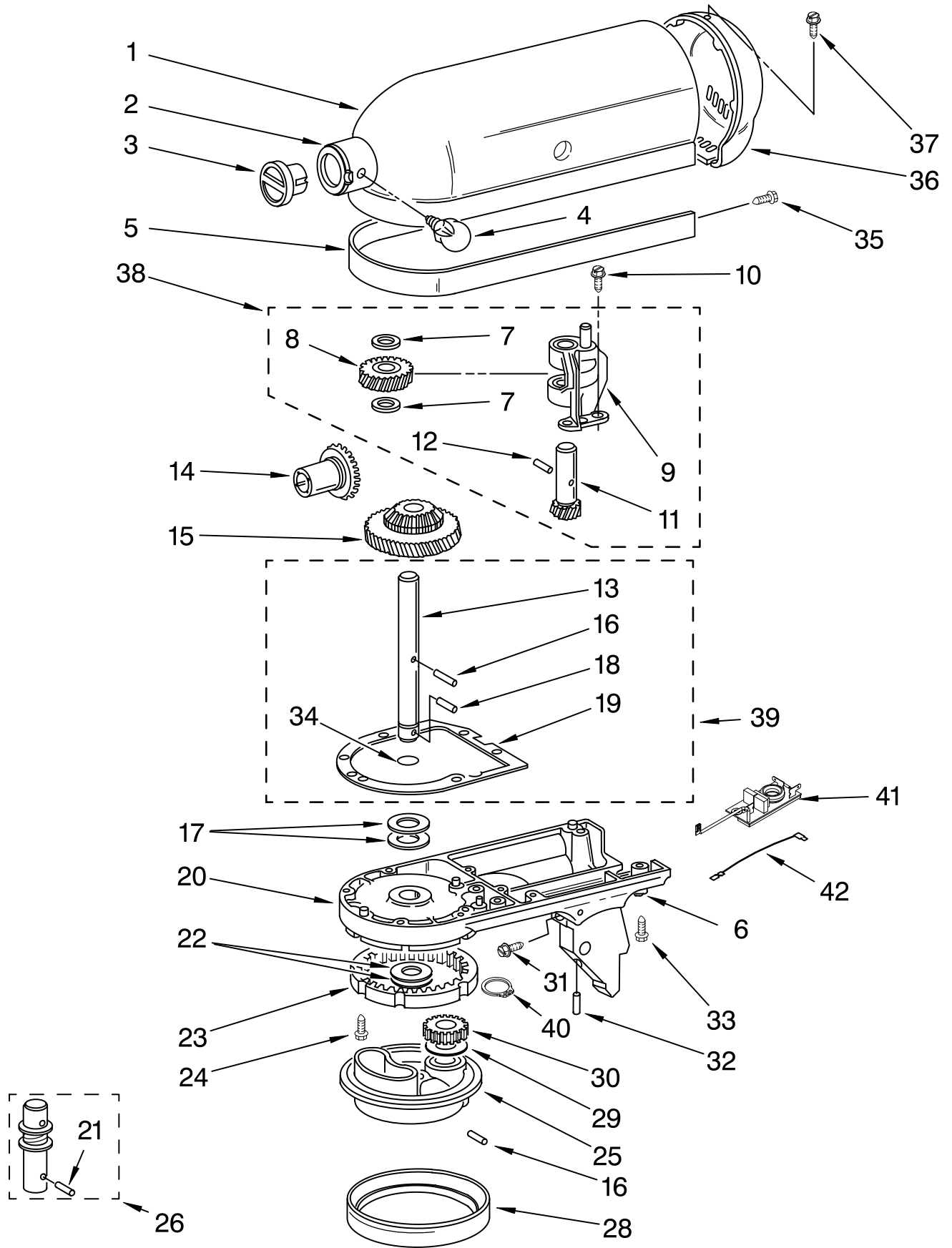
| Illus. No. | Part No. | DESCRIPTION |
|------------|----------|---------------------------------|
| 1 | | Literature |
| | 9709851 | Use & Care Guide |
| | 8212377 | Repair Parts List |
| 2 | 4162529 | Screw Cap Kit |
| 3 | 9709267 | Lever, Latch |
| 4 | 24450 | Link, Latch |
| 5 | 115792 | Foot |
| 6 | ** | Pedestal & Foot |
| 7 | 16910 | Pin, Hinge |
| 8 | 103993 | Screw, Latch Bearing |
| 9 | 3184200 | Latch, Link & Lever Assembly |
| 10 | 9709055 | Latch |
| 11 | 8533912 | Washer |
| 12 | 110679 | Screw |
| 13 | 116241 | Washer, Spring |
| 14 | 3400020 | Screw |
| 15 | 9708470 | Beater, Flat |
| 16 | 4169926 | Bowl And Base (4 1/2 Qt.) |
| 17 | 9708471 | Dough Hook |
| 18 | 9706446 | Wire Whip |
| 19 | | Headlock |
| | 3184262 | White |
| 20 | 3183690 | Spring, Lock Lever |
| 21 | 9706633 | Shield, Pouring |



FOR ORDERING INFORMATION REFER TO PARTS PRICE LIST

CASE, GEARING AND PLANETARY UNIT

For Variations of Model: 5KSM45E__4



FOR ORDERING INFORMATION REFER TO PARTS PRICE LIST

CASE, GEARING AND PLANETARY UNIT

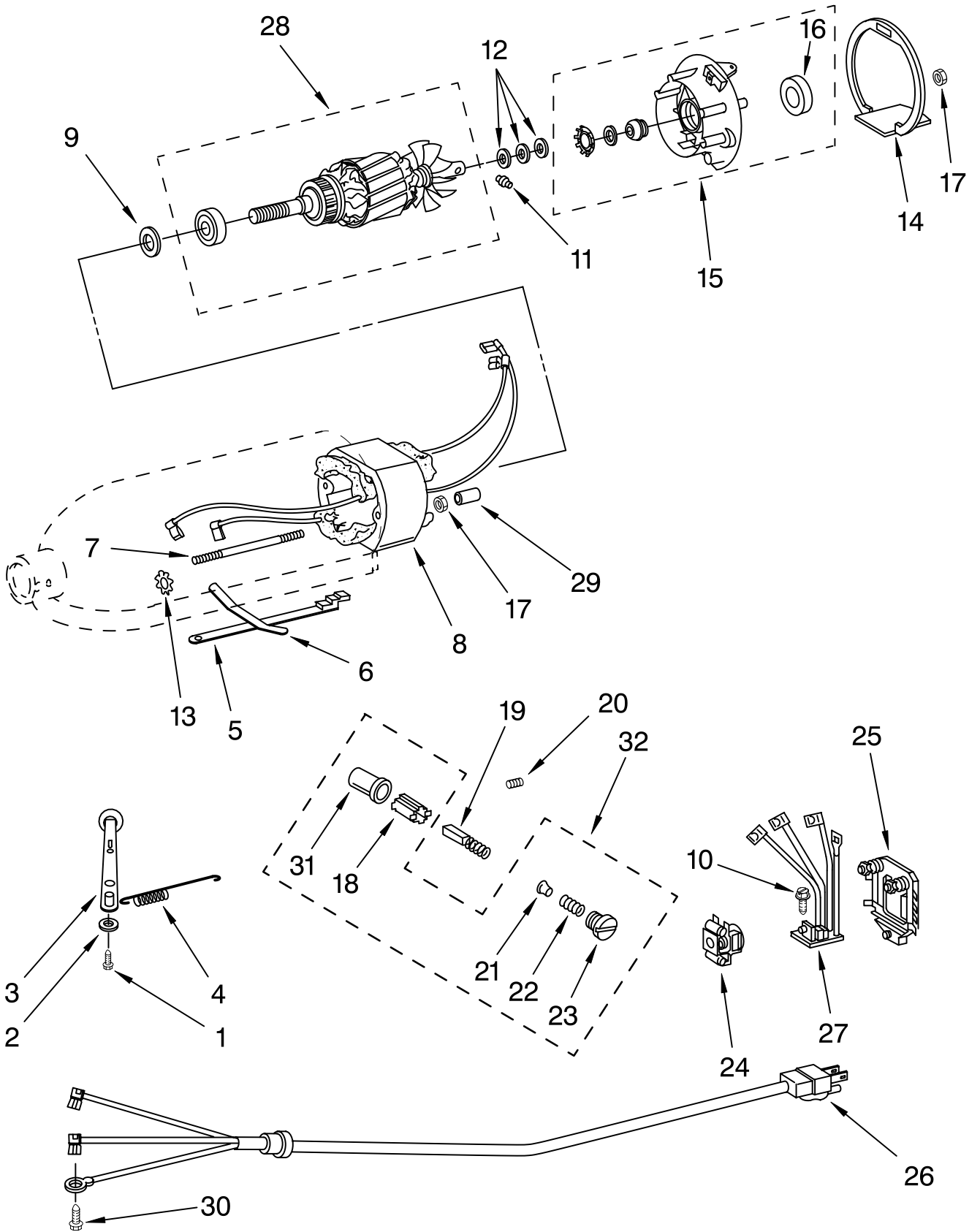
For Variations of Model: 5KSM45E__4

| Illus. No. | Part No. | DESCRIPTION | Illus. No. | Part No. | DESCRIPTION | Illus. No. | Part No. | DESCRIPTION |
|------------|----------|-------------------------------|------------|----------|-----------------------------|------------|----------|---|
| 1 | ** | Gearcase Motor Housing | 15 | 9709627 | Bevel Pinion & Center Gear | 29 | 9706090 | Washer, Shim |
| 2 | 16897 | Ring, Attachment Hub | | | | 30 | 9703903 | Pinion, Gear |
| 3 | 242765-2 | Cap, Attachemnt Hub | 16 | 240018-1 | Pin (Vertical Center Shaft) | 31 | 89411 | Screw |
| 4 | 9709194 | Thumb Screw | 17 | 3180163 | Washer, Fiber | 32 | 3400203 | Screw, Set |
| 5 | ** | Band, Trim | 18 | 9705443 | Pin, Groove | 33 | 3400025 | Screw |
| 6 | 8533914 | Lock Washer | 19 | 4162324 | Gasket, Transmission Case | 34 | 67500-55 | "O" Ring |
| 7 | 3180161 | Washer, Shim | | | | 35 | 311932 | Screw, Self Tapping |
| 8 | 4162897 | Worm Gear | 20 | ** | Lower Gear Case | 36 | ** | Cover, End |
| 9 | 240308 | Worm Gear Bracket And Bearing | 21 | 9704677 | Pin, Groove | 37 | 4162914 | Screw |
| 10 | 3400022 | Screw | 22 | 3180163 | Washer, Fiber | 38 | 240309-2 | Worm & Pinion Gears Assembly |
| 11 | 240210-2 | Gear, Shaft and Pinion | 23 | 9703904 | Gear, Internal | 39 | 4160474 | Center Shaft & "O" Ring |
| 12 | 9705444 | Pin (Worm Gear) | 24 | 103994 | Screw, Special Planetary | 40 | 9703438 | Ring |
| 13 | 240026 | Shaft, Vertical Center | 25 | ** | Planetary | 41 | 9705132 | RFI Filter |
| 14 | 9705130 | Gear, Attachment Hub Bevel | 26 | 3184052 | Agitator Shaft Assembly | 42 | 9702311 | Lead, Filter (to Control Board) |
| | | | 28 | 240285 | Ring, Planetary Drip | | | **Refer to Page 2 Color Variation Parts |

FOR ORDERING INFORMATION REFER TO PARTS PRICE LIST

MOTOR AND CONTROL PARTS

For Variations of Model: 5KSM45E__4



FOR ORDERING INFORMATION REFER TO PARTS PRICE LIST

MOTOR AND CONTROL PARTS

For Variations of Model: 5KSM45E__4

| Illus. No. | Part No. | DESCRIPTION |
|-----------------------|---------------------|----------------------------------|
| 1 | 110679 | Screw, Pivot |
| 2 | 116241 | Washer, Spring |
| 3 | 9709276 | Switch Lever And Stud |
| 4 | 3183680 | Spring, Control Plate |
| 5 | 3184176 | Speed Link & Cam |
| 6 | 240205 | Spring, Flat |
| 7 | 240769 | Screw, Stator |
| 8 | 9701670 | Field Assembly |
| 9 | 9704324 | Washer, Ball Bearing (Front) |
| 10 | W10068260 | Screw |
| 11 | 16998 | Stud, Governor Drive |
| 12 | 3180162 | Washer, Spacing |
| 13 | W10068270 | Washer |
| 14 | 3184356 | Seal, End |
| 15 | 3180526 | Bracket, Bearing Asm. |
| 16 | 3180238 | Washer |
| 17 | 8533905 | Nut, Machine |
| 18 | 240680 | Insert, Brush Holder |
| 19 | 9706416 | Brush, Carbon |
| 20 | 9707926 | Screw, Set |
| 21 | 116286 | Cap, Spring Seat |
| 22 | 116287 | Spring, Cap |
| 23 | | Cap, Brush Holder |
| | 3184212 | Black |
| 24 | 17830 | Governor Assembly |
| 25 | 240904-2 | Control Plate Assembly |
| 26 | | Cord, Power |
| | 9702318 | White (European) |
| 27 | 9706596 | Board, Phase Control |
| 28 | 9708316 | Armature & Bearng Assy (240V) |
| 29 | 4162634 | Sleeve, Motor Stud |
| 30 | 3184086 | Screw |
| 31 | 3179908 | Housing, Brush Holder |
| 32 | 4162546 | Brush Holder Assembly |

FOR ORDERING INFORMATION REFER TO PARTS PRICE LIST

ACCESSORY PARTS

For Variations of Model: 5KSM45E__4

| Illus. No. | Part No. | DESCRIPTION |
|-----------------------|---------------------|--|
| | 4164778 | Mixer Attachment Pak (Includes Food Grinder (FGA), Food Strainer (FVSP), And Vegetable Slicer, (RVSA) (FPPA) |
| | 4164749 | Food Grinder (FGA) |
| | 8211924 | Grain Mill (KGMA) |
| | 4164768 | Pasta Maker And Food Grinder (Includes SNP Pasta Maker Plates) (SN/FGA) |
| | 4164775 | Fruit/Vegetable Strainer Parts (Use With FGA Model Only) (FVSP) |
| | 4164750 | Rotor Slicer/Shredder (With 4 Standard Cones) Fine Shredder, Coarse Shredder, Thick Slicer, And Thin Slicer (RVSA) |
| | 3177975 | Pouring Shield (KPS2CL) |
| | 4164824 | Pasta Maker Plates (SNPA) |
| | 4164774 | Fruit/Vegetable Strainer And Food Grinder (FVS/FGA) |
| | 3180617 | Cover, Decorative (Cotton Polyester) |
| | 4162838 | Food Tray (FT) |
| | 4164748 | Juicer (JE) |
| | 4164747 | Can Opener (CO) |
| | 4164803 | Sausage Stuffer Kit (SSA) |
| | 3177924 | Bowl Cover, Plastic Non-Sealing |
| | 4163337 | Bowl, Stainless With Handle |
| | 3180262 | Bowl, 3 Qt. |
| | 4162160 | Bowl, Satin Stainless |
| | 9707963 | Ice Cream Maker (KICA) |
| | 4176452 | Pouring Shield (International) |

FOR ORDERING INFORMATION REFER TO PARTS PRICE LIST