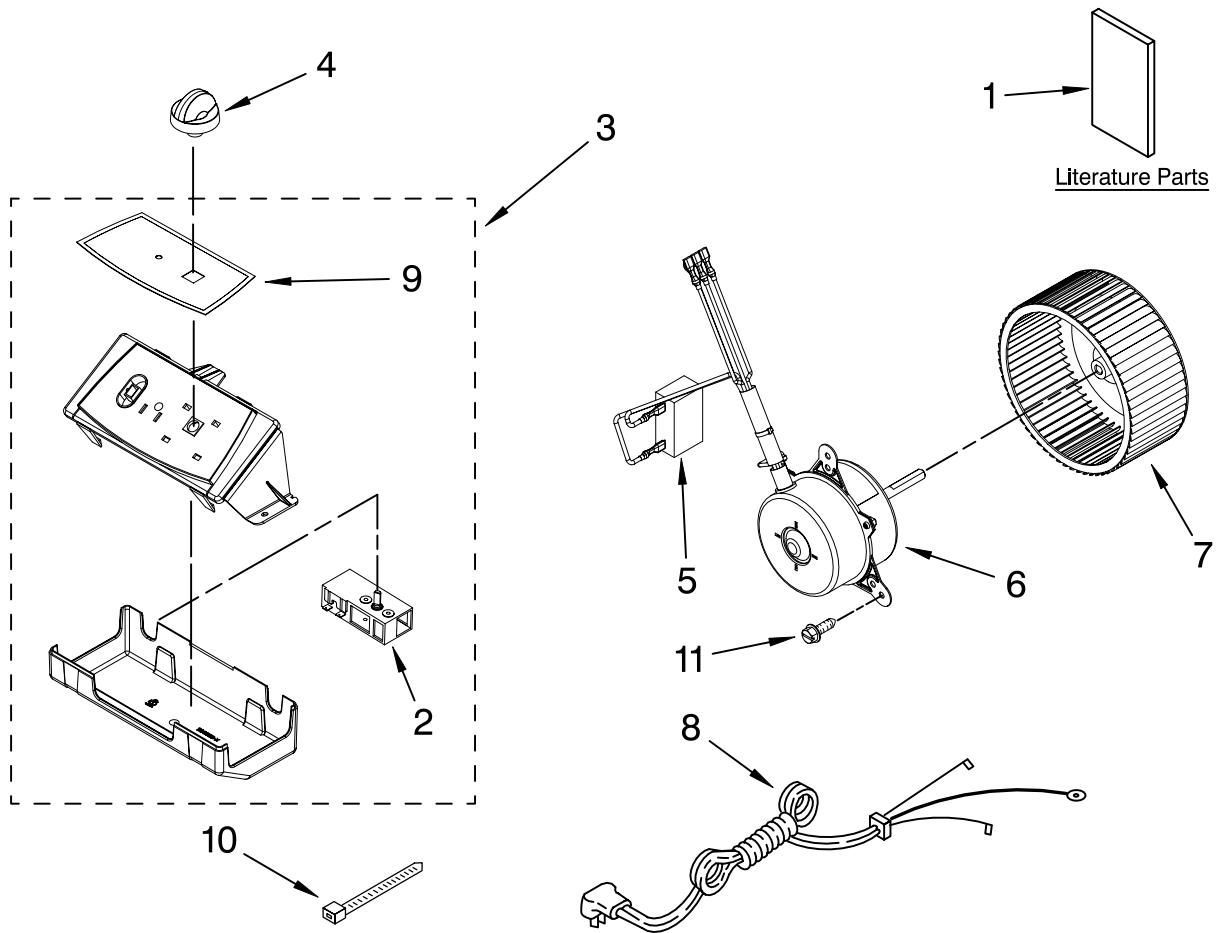




AIR FLOW AND CONTROL PARTS

For Model: AD25DSS1

DEHUMIDIFIER

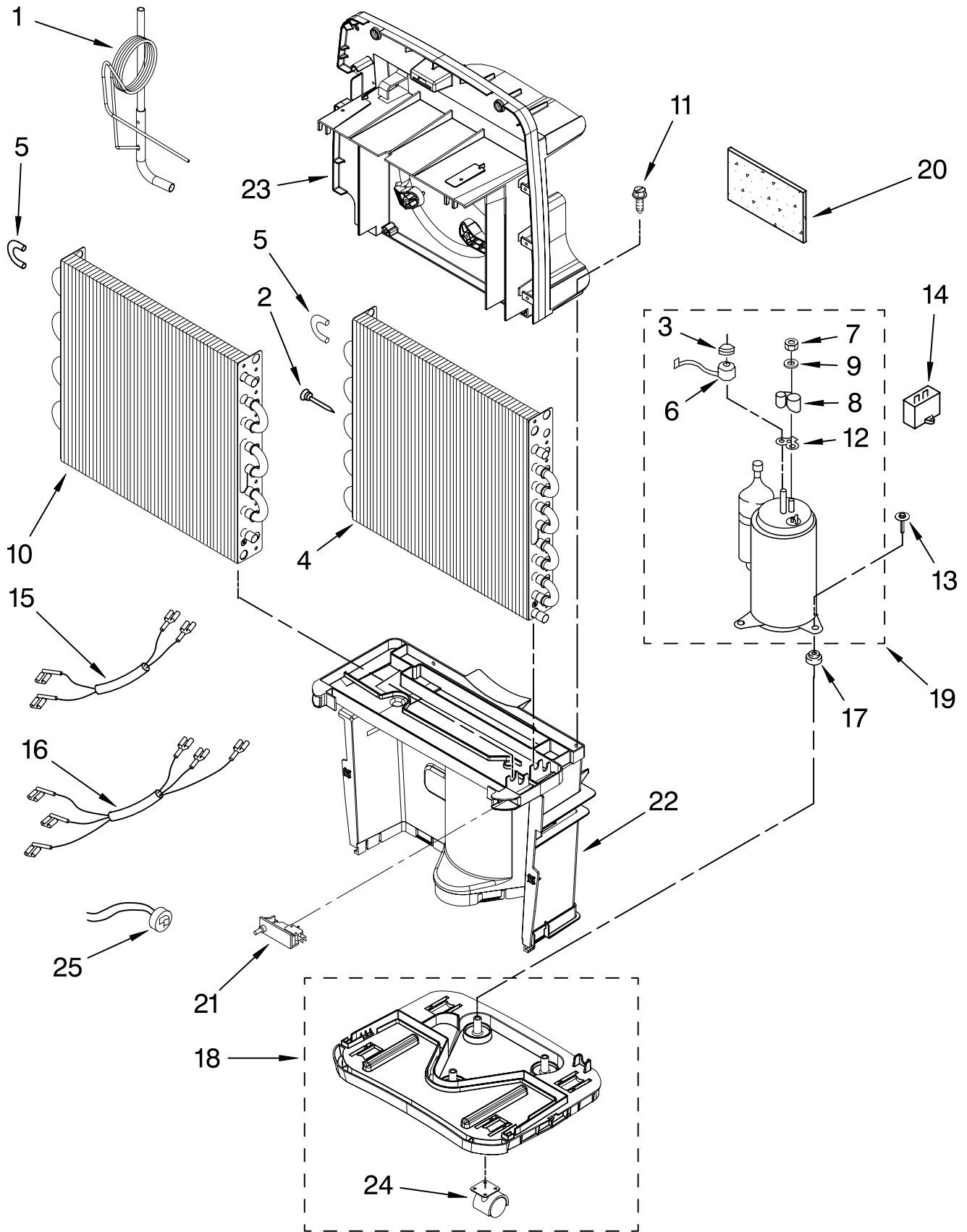


| Illus. No. | Part No. | DESCRIPTION |
|------------|----------|-------------------------|
| 1 | | Literature Parts |
| | 1188828 | Wiring Diagram |
| | 1188826 | Use & Care Guide |
| 2 | 1168670 | Humidistat, Control |
| 3 | 1188454 | Assembly, Control Panel |
| 4 | 1187163 | Knob |
| 5 | 1188475 | Capacitor, Fan |
| 6 | 1188409 | Motor, Fan |
| 7 | 1188416 | Wheel, Blower |
| 8 | 1188470 | Cord, Appliance |
| 9 | 1188455 | Overlay |
| 10 | 857547 | Tie, Cable |
| 11 | 489470 | Screw |

FOR ORDERING INFORMATION REFER TO PARTS PRICE LIST

UNIT PARTS

For Model: AD25DSS1



FOR ORDERING INFORMATION REFER TO PARTS PRICE LIST

UNIT PARTS

For Model: AD25DSS1

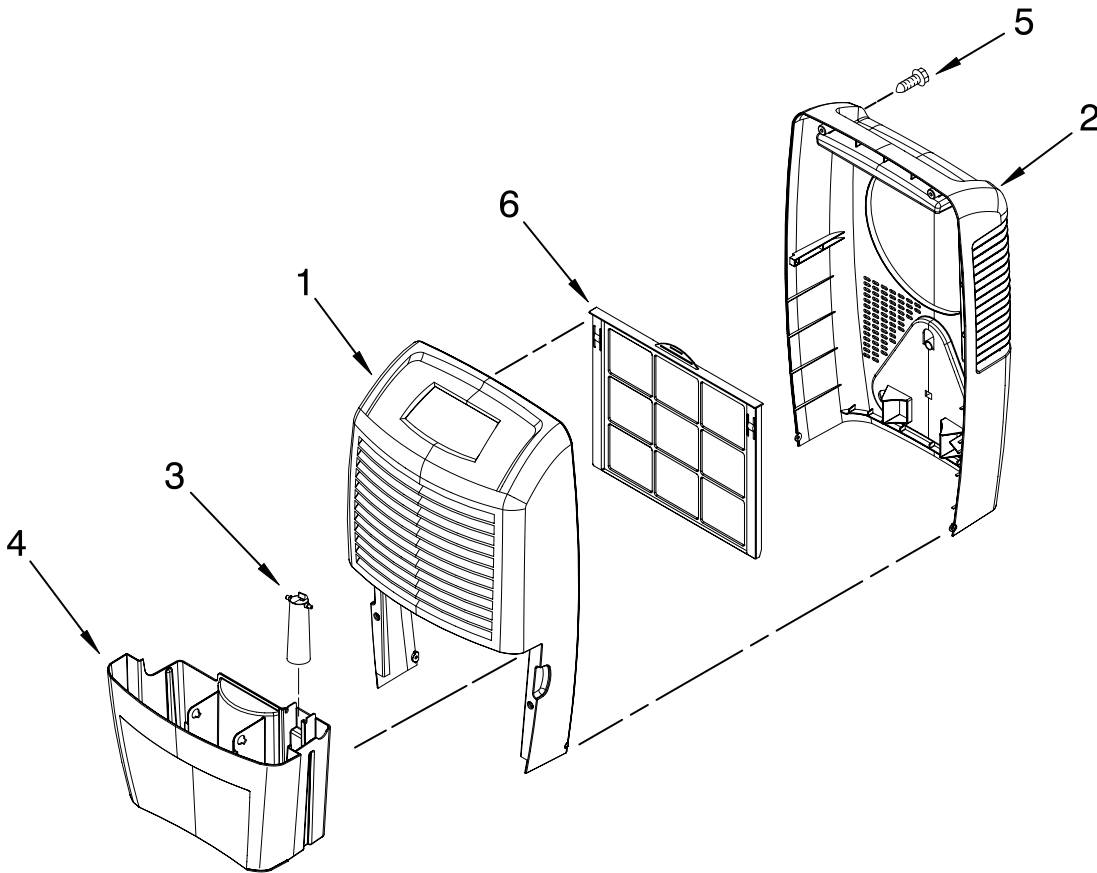
| Illus. No. | Part No. | DESCRIPTION |
|-------------------|-----------------|---|
| 1 | 1188520 | Tube, Restrictor |
| 2 | 1162526 | Strainer |
| 3 | 1185795 | Spring, Overload |
| 4 | 1188480 | Condenser |
| 5 | 8031222 | Bend, Return |
| 6 | 1188185 | Overload, Protector |
| 7 | 1186030 | Nut, Terminal Cover |
| 8 | 1188822 | Cover, Terminal |
| 9 | 1185794 | Washer, Nut |
| 10 | 1188439 | Evaporator |
| 11 | 9740848 | Screw |
| 12 | 1185793 | Gasket, Terminal Cover |
| 13 | W10001320 | Screw, Compressor |
| 14 | 1188477 | Capacitor |
| 15 | 1188467 | Wire Harness, Compressor (2 Wire) |
| 16 | 1188468 | Wire Harness, Compressor (3 Wire) |
| 17 | 1188564 | Grommet, Compressor |
| 18 | 1188558 | Base |
| 19 | 1188554 | Compressor, (Complete Assembly) |
| 20 | 1182480 | Putty, Sound Damping |
| 21 | 1188814 | Switch, Bucket Fill/Check |
| 22 | 1188559 | Support, Lower |
| 23 | 1188561 | Support, Upper |
| 24 | 1188415 | Caster |
| 25 | 1188823 | Bi-Metal, Defrost |

REFRIGERANT CHARGE

4.90 oz.
R-22

CABINET PARTS

For Model: AD25DSS1



| Illus. No. | Part No. | DESCRIPTION |
|------------|----------|--------------------------------------|
| 1 | 1188395 | Cabinet, Front |
| 2 | 1188396 | Cabinet, Rear |
| 3 | 1188341 | Float |
| 4 | 1188527 | Bucket Assembly (Includes Item 6) |
| 5 | 9742177 | Screw |
| 6 | 1188402 | Filter |

**Following Parts Not Illustrated
and Optional Parts Not Included**

| | |
|------------|---|
| | Valve, Access |
| 978025 | 1/4" Tube O.D. |
| 978026 | 5/16" Tube O.D. |
| 978027 | 3/8" Tube O.D. |
| 978028 | 1/2" Tube O.D. |
| 978029 | 5/8" Tube O.D. |
| 978030 | 3/4" Tube O.D. |
| 978865Bulk | Seal, Ring Access Valve (20 Pack) |

FOR ORDERING INFORMATION REFER TO PARTS PRICE LIST