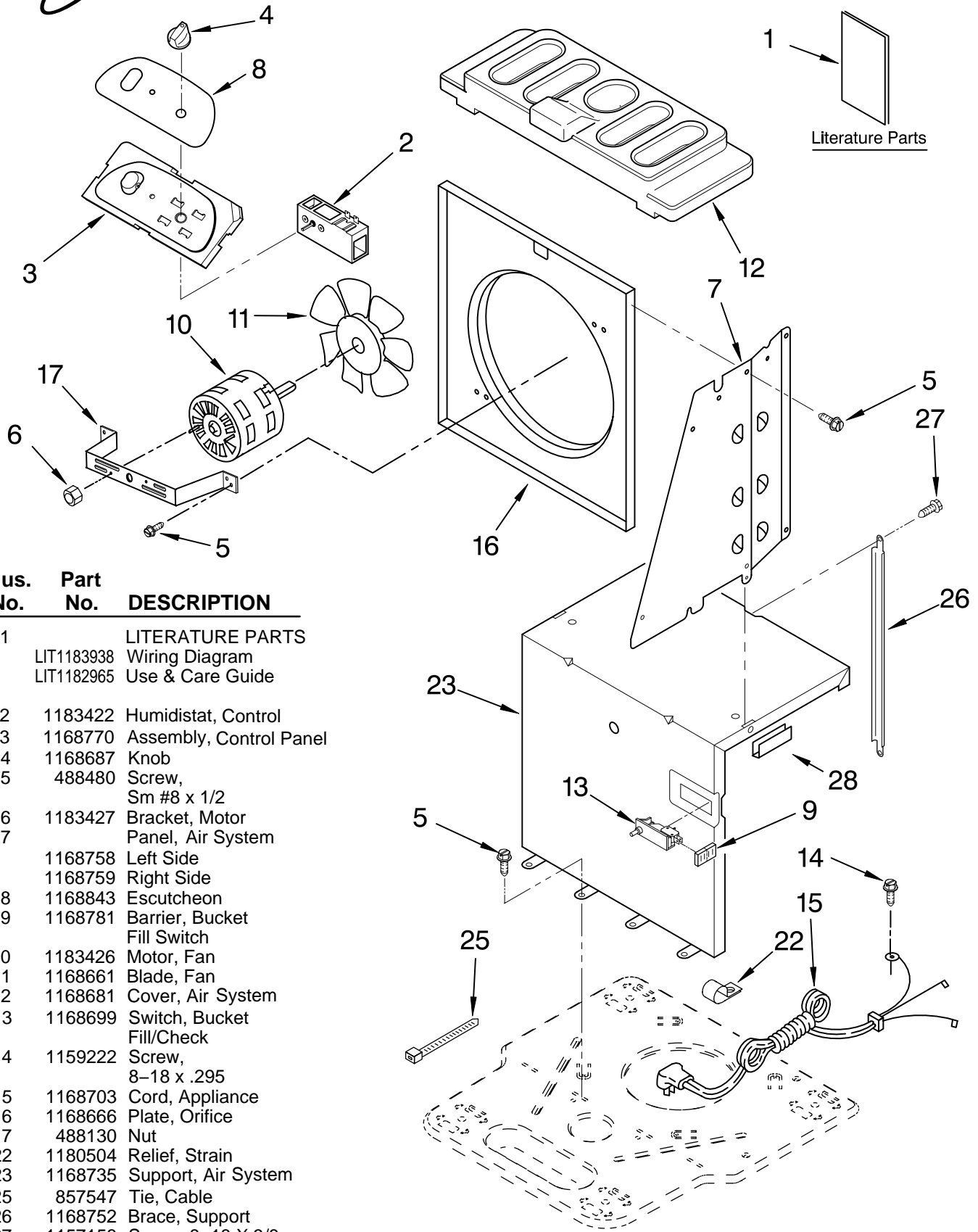




AIR FLOW AND CONTROL PARTS

DEHUMIDIFIER

For Model: AD50DBK0

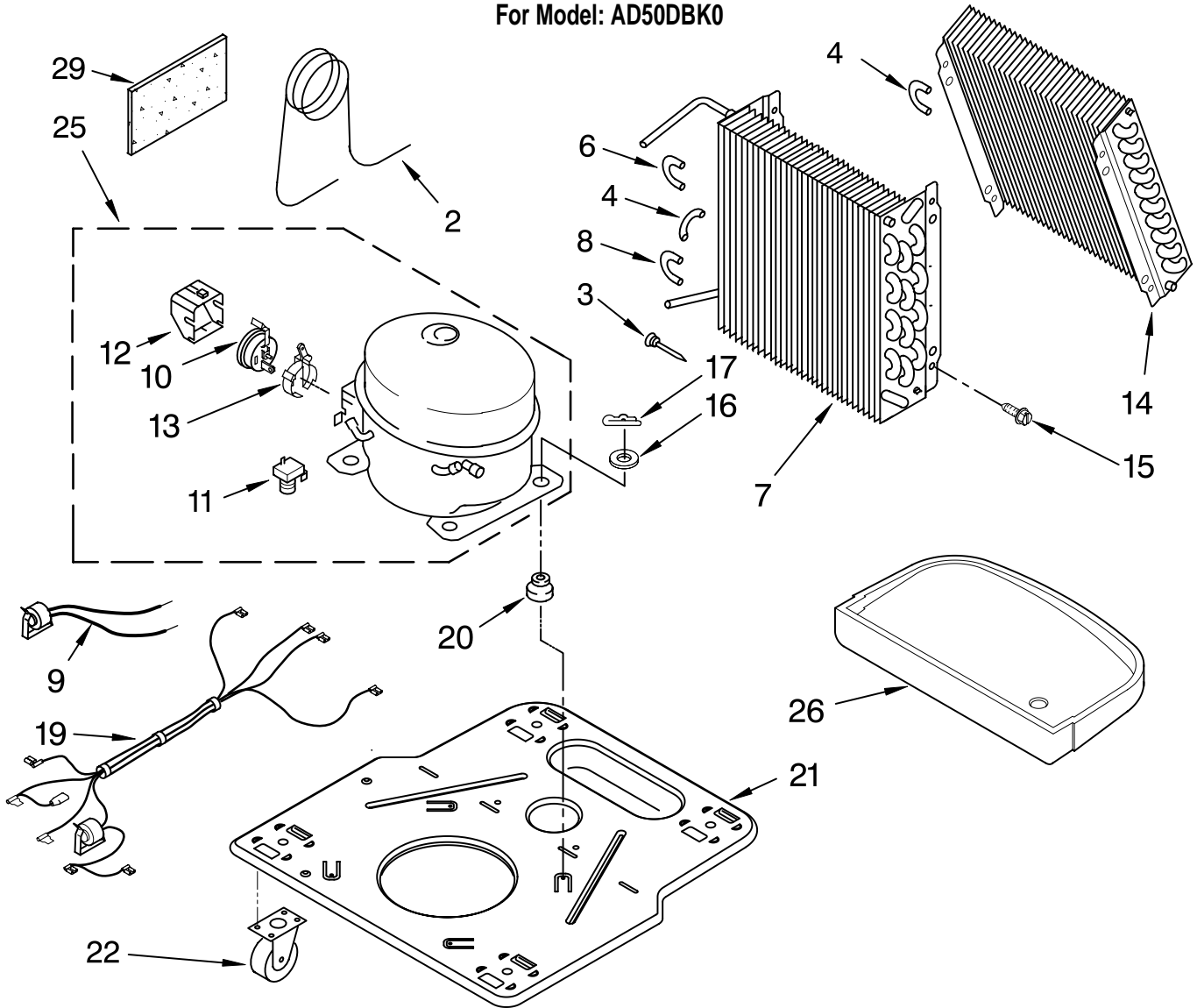


Illus. Part No. DESCRIPTION

1	LITERATURE PARTS
LIT1183938	Wiring Diagram
LIT1182965	Use & Care Guide
2	1183422 Humidistat, Control
3	1168770 Assembly, Control Panel
4	1168687 Knob
5	488480 Screw, Sm #8 x 1/2
6	1183427 Bracket, Motor Panel, Air System
7	1168758 Left Side
	1168759 Right Side
8	1168843 Escutcheon
9	1168781 Barrier, Bucket Fill Switch
10	1183426 Motor, Fan
11	1168661 Blade, Fan
12	1168681 Cover, Air System
13	1168699 Switch, Bucket Fill/Check
14	1159222 Screw, 8-18 x .295
15	1168703 Cord, Appliance
16	1168666 Plate, Orifice
17	488130 Nut
22	1180504 Relief, Strain
23	1168735 Support, Air System
25	857547 Tie, Cable
26	1168752 Brace, Support
27	1157158 Screw, 8-18 X 3/8
28	1180634 Edge Guard

UNIT PARTS

For Model: AD50DBK0



Illus. No.	Part No.	DESCRIPTION
2	1168734	Tube, Restrictor (Length 30.00")
3	1162526	Strainer
4	708532	Bend, Return Evaporator (9)
6	8031223	Bend, Return Condenser (2)
7	1184770	Condenser
8	8031222	Bend, Return (15)
9	1168777	Deicer, Bimetal

Illus. No.	Part No.	DESCRIPTION
10	1184495	Overload, Protector
11	950058	Relay, Start
12	1182781	Cover, Terminal
13	1184415	Bracket, Overload
14	1185204	Evaporator
15	488480	Screw, 8 x 1/2 (4)
16	680975	Washer
17	24364001	Clip, Compressor
19	1168701	Harness, Wire
20	1168722	Grommet (4)
21	1168654	Base

Illus. No.	Part No.	DESCRIPTION
22	1164241	Caster (4)
25	1182780	Compressor, (Complete Assembly)
26	1168761	Pan, Drain
29	1184625	Insulation (Restrictor Tube)

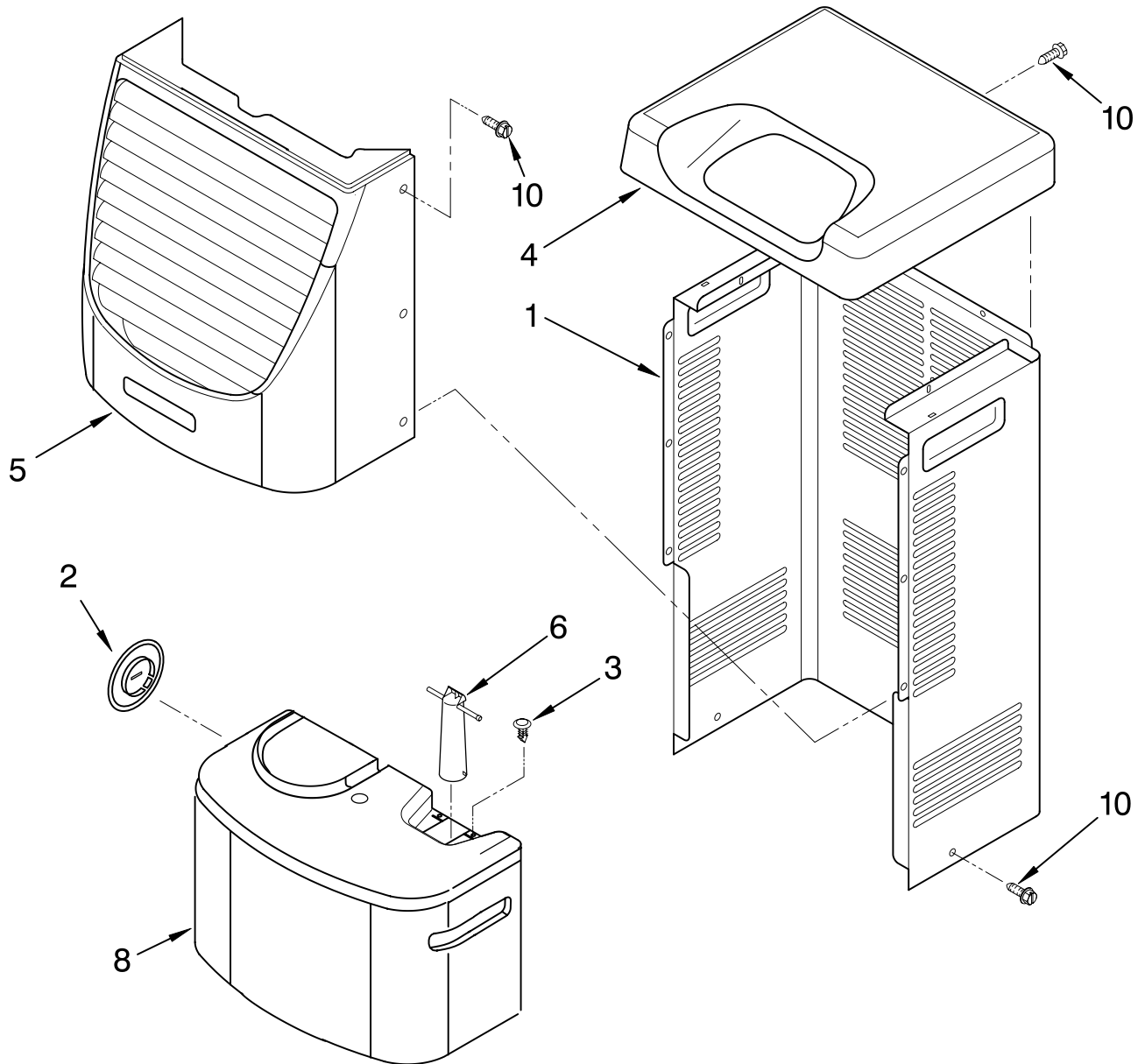
REFRIGERANT CHARGE

12.0 oz.

**Production Compressor Requires Production Electrical Components.
 Service Compressor Requires Service Electrical Components.
 For Further Information, Refer to Filmcard 19.1.**

CABINET PARTS

For Model: AD50DBK0



Illus. No.	Part No.	DESCRIPTION
1	1168667	Cabinet
2	1172098	Cover, Hose Connection
3	1168762	Clip, Float
4	1168652	Cover, Top
5	1182600	Cover, Front
6	1172075	Float
8	1182080	Bucket, Condensate
10	1168744	Screw

Illus. No.	Part No.	DESCRIPTION
Following Parts Not Illustrated and Optional Parts Not Included		
	484310	Epoxy, Tube (Aluminum Repair)
	505168	Tape, No Drip Valve, Access
	978025	1/4" Tube O.D.
	978026	5/16" Tube O.D.

Illus. No.	Part No.	DESCRIPTION
	978027	3/8" Tube O.D.
	978028	1/2" Tube O.D.
	978029	5/8" Tube O.D.
	978030	3/4" Tube O.D.
	978865	Seal, Ring Access Valve (20 Pack)