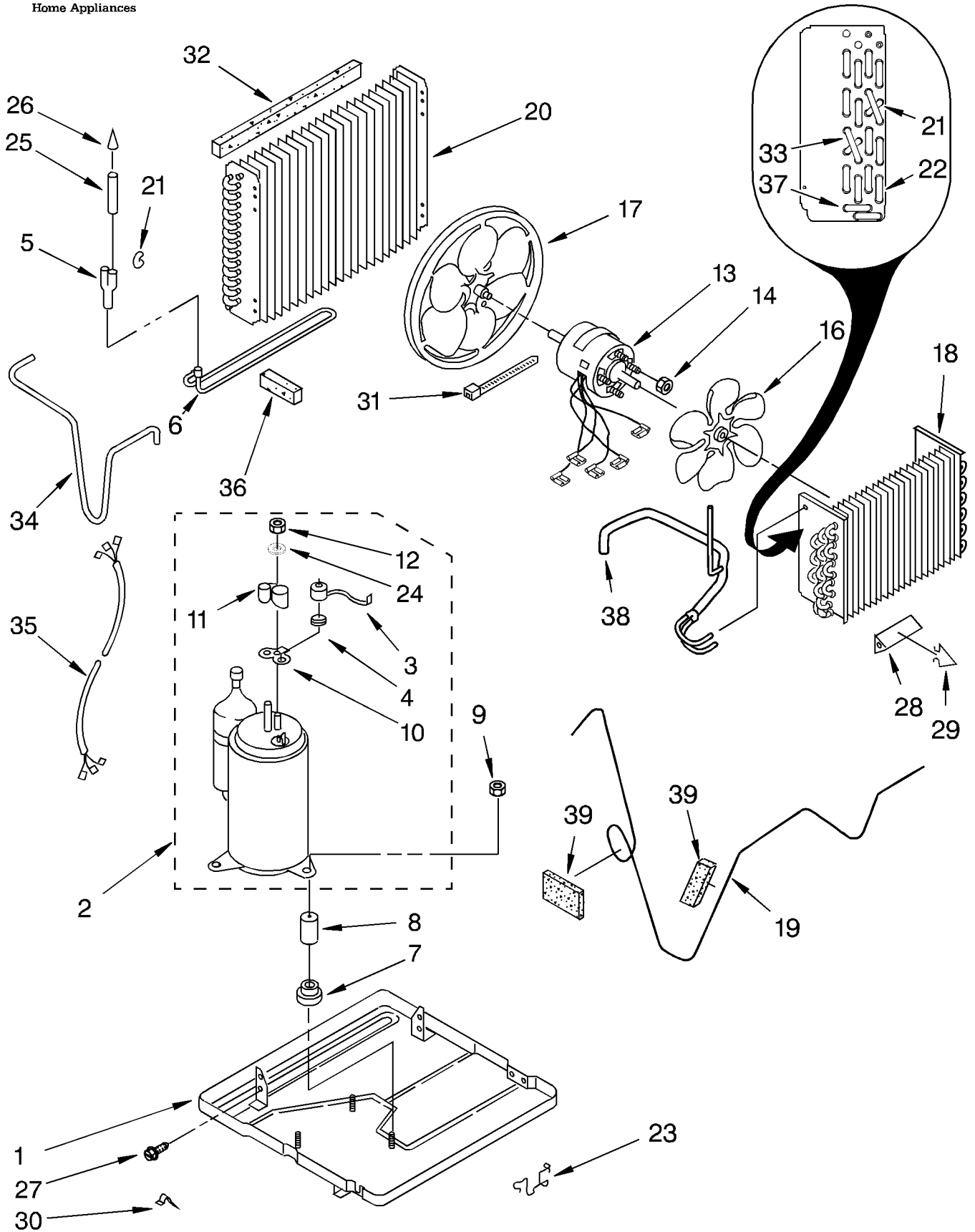


# UNIT PARTS

For Model: X12002D00



1	950019	Base
2	1163573	Compressor
3		Overload
	1155700	Production
4	950032	Spring, Overload
5	947364	Tube, Flow Divider
6	1160032	Tube, Condenser Extension
7	950021	Grommet, Compressor Mounting (3)
8	950020	Sleeve, Compressor Mounting (3)
9	858121	Nut, Lock (3)
10	950035	Gasket, Terminal Cover
11	950036	Cover, Terminal
12	950027	Nut
13	947852	Motor, Fan
14	488130	Nut, Hex Keps 8-32 (4)
16	1160946	Blade, Fan (Evaporator)
17	1161594	Blade, Fan (Condenser)
18	1156743	Evaporator
19	1156455	Tube, Restrictor (2)
20	1164709	Condenser
21	708532	Bend, Return Condenser (13) Evaporator (2)
22	708531	Bend, Return Evaporator (12)
23	949634	Clip, Mtg. (2) (Base To Front)
24	950037	Washer
25	950825	Tube, Outlet
26	49599	Strainer, Tube
27	488480	Screw, SM #8 x 1/2A (7)
	488481	Screw (Repair) #10 x 3/8A
28	996773	Anticipator, Temperature
29	475577	Clip, Temperature Anticipator
30	642684	Clamp, Tube
31	857547	Tie, Cable
32	948090	Seal, Condenser Top
33	1158407	Bend, Return (2)
34	1165484	Tube, Discharge
35	484136	Harness, Wiring
36	859600	Seal, Condenser Bottom
37	1156533	Bend Return (2)
38	1163983	Tube, Suction
39	1162616	Seal, Anti-Rub

Following Parts Not Illustrated

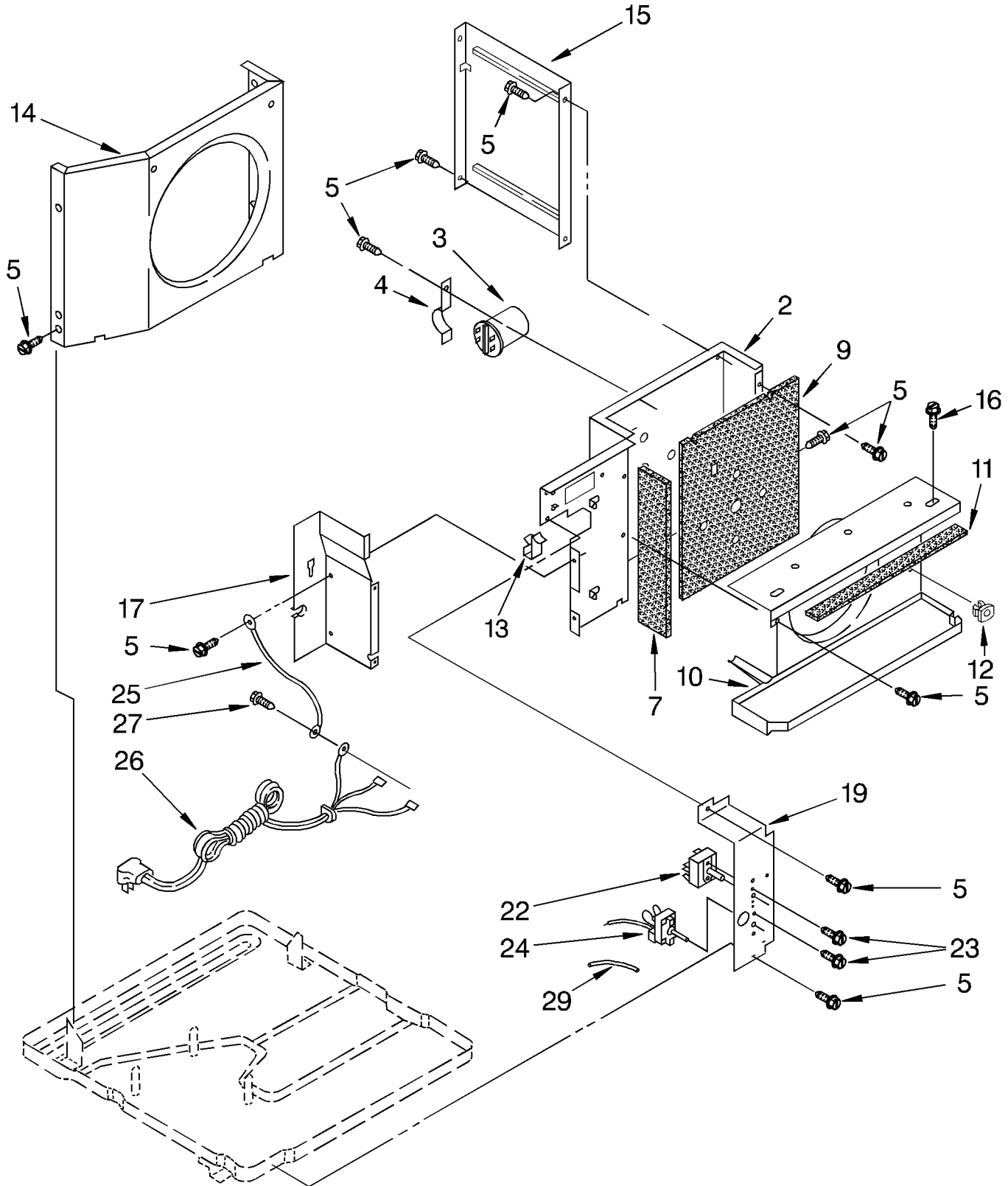
LITERATURE PARTS

LIT1165239	Sheet, Tech
LIT1165234	Wiring Diagram
LIT1166349	Use and Care Guide
LIT1155974	Instruction, Installtion

REFRIGERANT CHARGE 21 OZ.

# AIR FLOW AND CONTROL PARTS

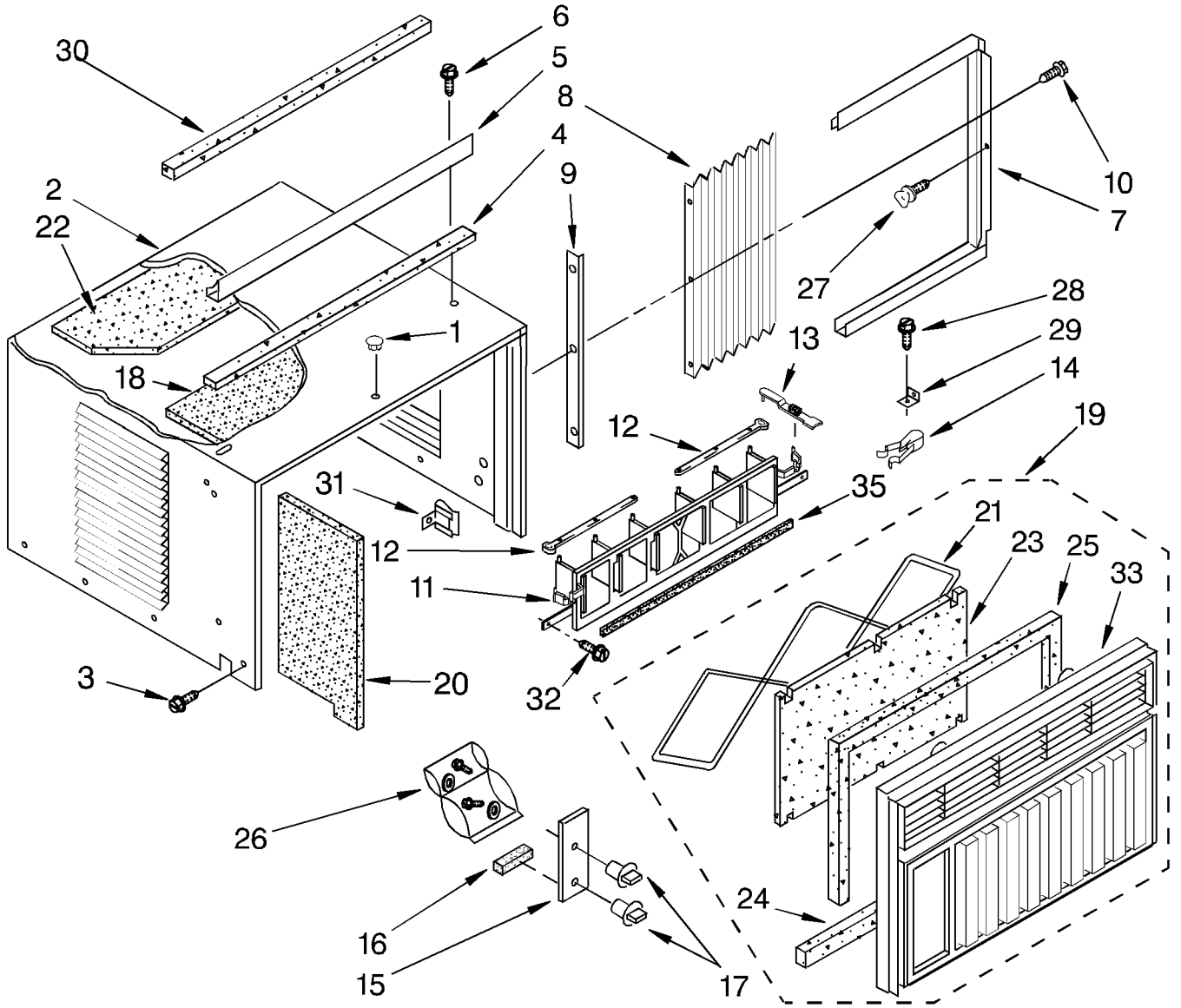
For Model: X12002D00



2	1165184	Wall, Dividing
3	1162594	Capacitor, Running
4	1162954	Bracket, Running Capacitor
5	488480	Screw, SM #8 x 1/2A
	488481	Screw (Repair) #10 x 3/8
7	1166339	Insulation (Side, Dividing Wall)
9	1166338	Insulation (Back, Dividing Wall)
10	948219	Shroud, Evaporator (Includes No.11)
11	1166282	Insulation, Evaporator Shroud
12	487808	Fastener, Snap
13	852451	Clamp, Cable
14	856037	Shroud, Condenser
15	1156536	Support, Unit (2)
16	487910	Screw, Sems SM #8 x 1/2A (2)
17	994561	Extension, Dividing Wall
19	1159147	Panel, Control
22	1165243	Switch, Rotary
23	488734	Screw, Machine 6-32 x .175 (4)
24	1166758	Control, Temperature
25	856094	Wire, Ground
26	1165241	Cable, Appliance
27	487871	Screw, ST 8-32 x 3/8
29	475841	Insulator, Sleeve Temp. Control

# CABINET PARTS

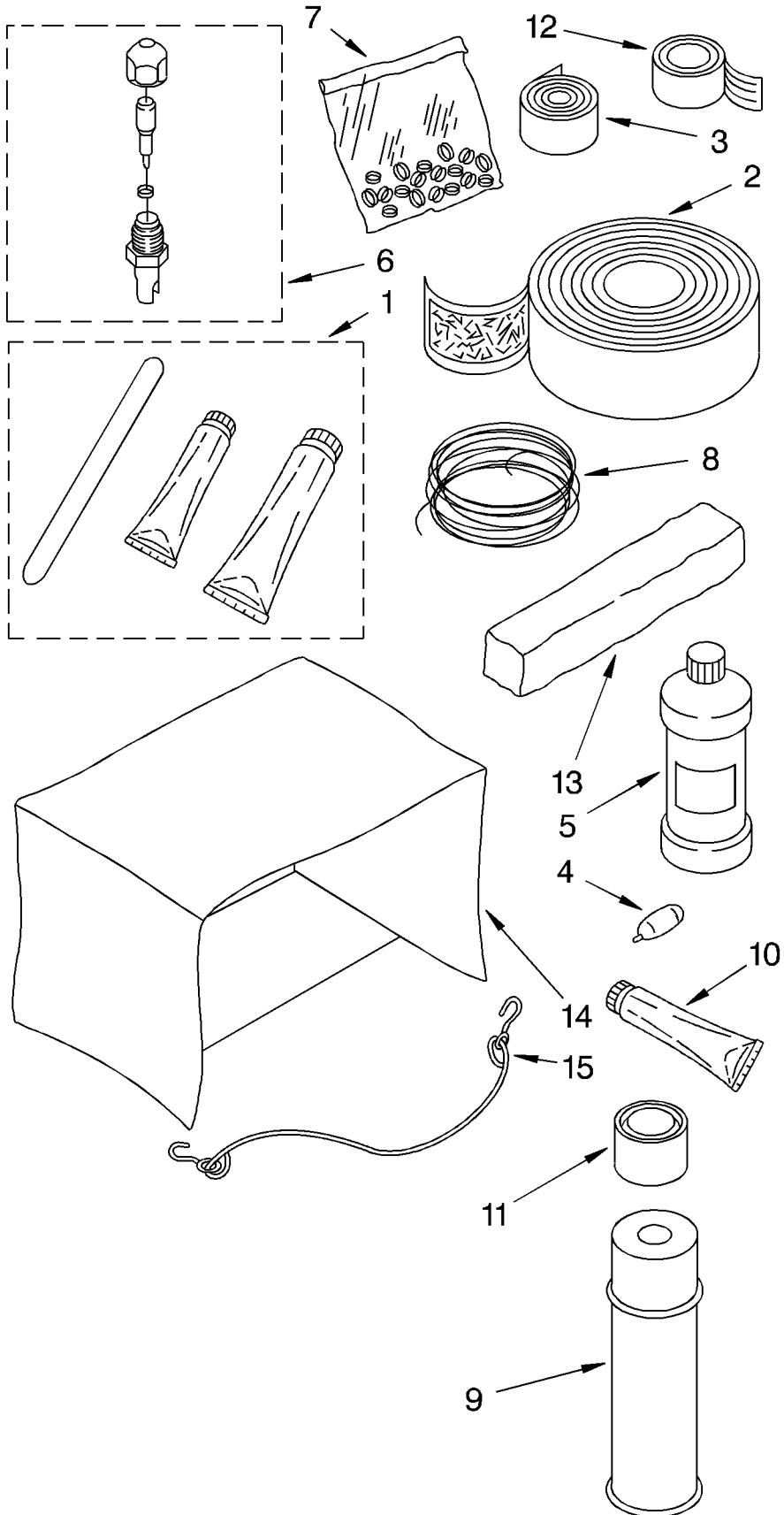
For Model: X12002D00



1	1157126	Plug, Hole
2	1163513	Cabinet
3	1157158	Screw, 8-3/8 SG
4	856989	Seal, Strip
5	993786	Channel, Top Mounting
6	488720	Screw, #10 x 1/2 (3)
7	1164155	Housing, Curtain R.S. (Includes #8)
	1164154	Housing, Curtain L.S. (Includes #8)
8	947160	Curtain (2)
9	644224	Retainer, Curtain (2)
10	1161561	Screw, 3/8 SG
11	1159980	Louver, Vertical (Includes Illus. Nos. 12, 13, 14)
12	855158	Link, Vertical Louver (2)
13	1161636	Handle, Vertical Louver (2)
14	644006	Spring, Detent (2)
15	1166342	Plate, Escutcheon
16	470036	Spacer, Escutcheon Plate (2)
17	1162672	Knob, Control (2)
18	1163429	Insul/Cabinet Top
19	1158197	Front, Cabinet
20		Insul/Cabinet
	1163430	(Right, Side)
	1163431	(Left, Side)
21	646963	Retainer, Filter
22	1158501	Insul/Cabinet
23	855246	Filter
24	852923	Seal, Cabinet Front
25	645883	Seal, Strip (Top & Sides)
26	476180	Bag, Accessory
27	475581	Screw, Thumb
28	488255	Screw, Wood #8 x 3/4 (1)
29	644228	Bracket, Window Lock
30	469877	Seal, Meeting Rail
31	1158294	Clip, Louver (2)
32	1159222	Screw
33	1158196	Front
35	855238	Seal (Back, Vertical Louver)

# OPTIONAL PARTS (NOT INCLUDED)

For Model: X12002D00



1	799833	Epoxy, Tube (Aluminum Repair)
2	505168	Tape, No, Drip 30'
3	479502	Tape, Vinyl 36'
4	10943	Oil, Turbine 1 Fl. Oz.
5	99243	Oil, Turbine 8 Fl. Oz.
6		Valve, Access
	876764	3/16" Tube O.D.
	978025	1/4" Tube O.D.
	978026	5/16" Tube O.D.
	978027	3/8" Tube O.D.
	978028	1/2" Tube O.D.
	978029	5/8" Tube O.D.
	978030	3/4" Tube O.D.
7	978865	Seal, Ring Access Valve (20 Pack)
8		Wire, 25' Roll
	10875	Blue 16 Ga.
	242820	Black 14 Ga.
	242825	Red 14 Ga.
	242826	White 14 Ga.
	47261	Black 12 Ga.
	299885	Red 12 Ga.
	47263	White 12 Ga.
9	813684	Adhesive, Insulation (24 Oz. Spray)
10	279368	Adhesive, Insulation (2 Oz. Tube)
11	485426	Paint, Touch-Up Starlight Gray 1/2 Pint (Lacquer)
12	212432	Sealer, Permagum 4 - 1' Strips
13	99344	Sealer, Permagum 1 Lb. Bar
14	484184	Cover, Winter
	484066	28 x 19 x 31"
	484067	19 x 12 x 14"
	484069	27 x 19 x 6 to 27"
	484184	22 x 15 x 3 to 18"
15	813610	Retainer, Cord (Winter Cover)