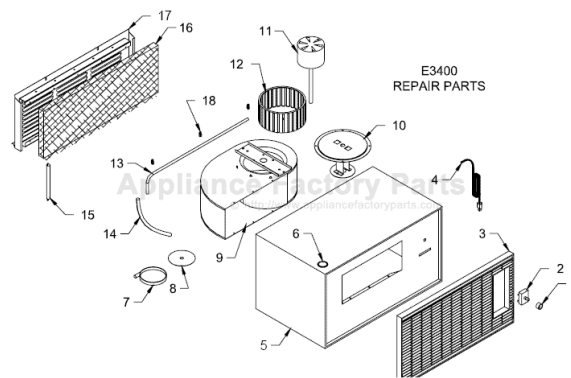


This Owner's Manual is provided and hosted by Appliance Factory Parts.



ESSICK E3400 Owner's Manual

[Shop genuine replacement parts for ESSICK E3400](#)



[Find Your ESSICK Evaporative Cooler Parts - Select From 70 Models](#)

----- Manual continues below -----

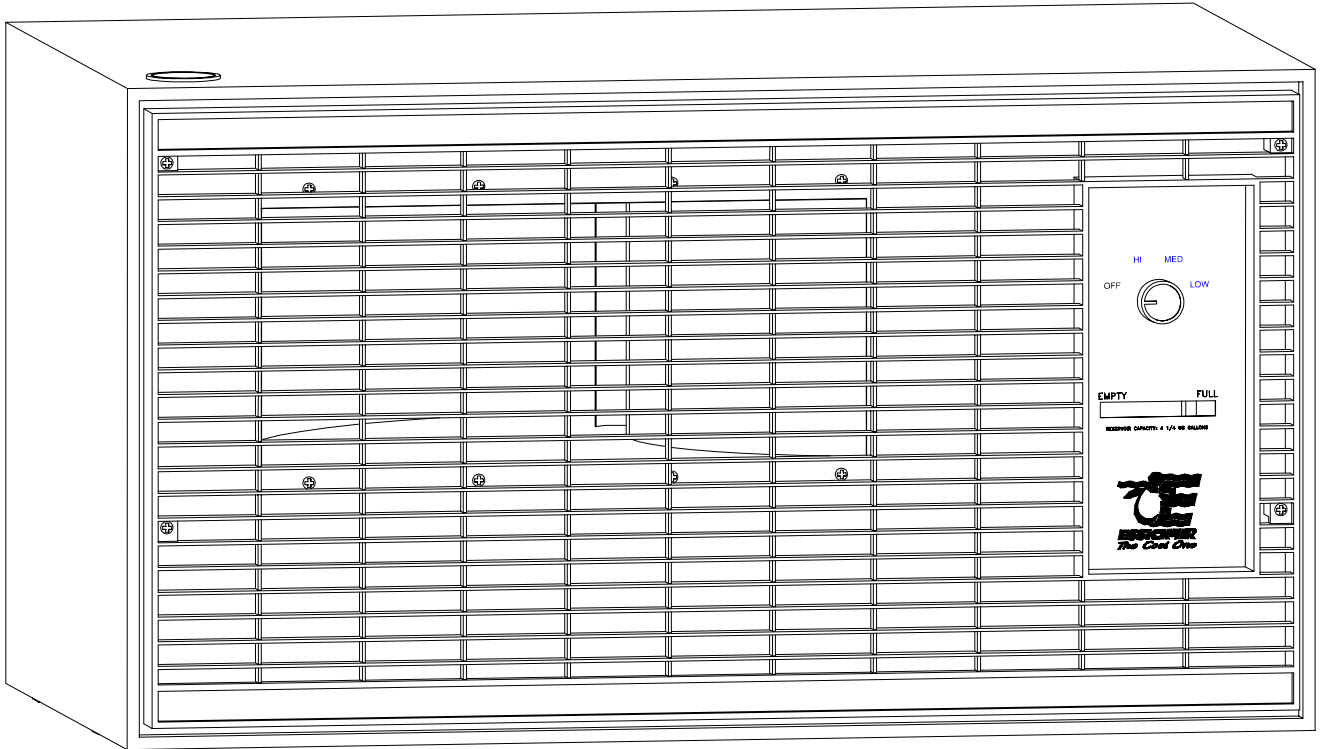


OWNERS MANUAL

PORTABLE EVAPORATIVE AIR COOLER

MODEL: E3400

- INSTALLATION
- OPERATION
- REPAIR PARTS
- WARRANTY



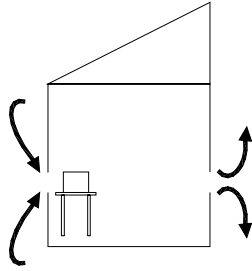
READ AND SAVE
THIS INSTRUCTION MANUAL

ESSICK AIR PRODUCTS
5800 MURRAY LITTLE ROCK, AR 72209

P/N 70550
REV. 2/02

LOCATION OF COOLER

Always remember to locate the cooler in a position to allow the cool air to circulate through the room and discharge to the outdoors. It is very important to completely discharge this air to the outdoors in order to remove the heat and humidity. A window exhaust can assist this process.



Operation

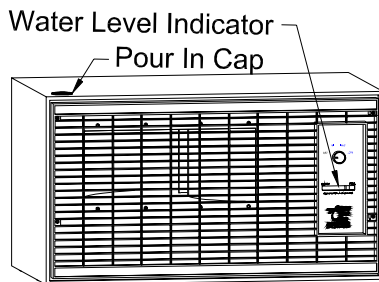
Unpack cooler, select position with the back of the cooler near a window (open window 3 to 4 inches) and plug into standard 115-120V, grounded outlet. Fill with water only when switch is turned to off or cooler is unplugged. Although the cooler can operate on the floor, it is best to operate at table height. Aim the cooler across the room in the direction of an outside window or door and try to position it so that people occupying the room will be in the direct path of air movement.

Points to remember

1. The drier the air, the better your cooler will function. If climate conditions are humid, it will cut down the effectiveness of the cooling process.
2. Being in the direct path of the air movement will reduce body temperatures and aid in the cooling process.
3. It is very important to discharge the air produced by the cooler, in order to pass the heat and humidity outdoors.
4. It will not harm the cooler if it runs low or out of water. The cooler can be used as a fan, without water, if the humidity is high.

Filling the reservoir

Fill the cooler reservoir using the pour in cap. Pour in water, being careful not to overfill. Watch red indicator on front of cooler. If cooler is overfilled, water will spill out the back of the cooler.



Start up

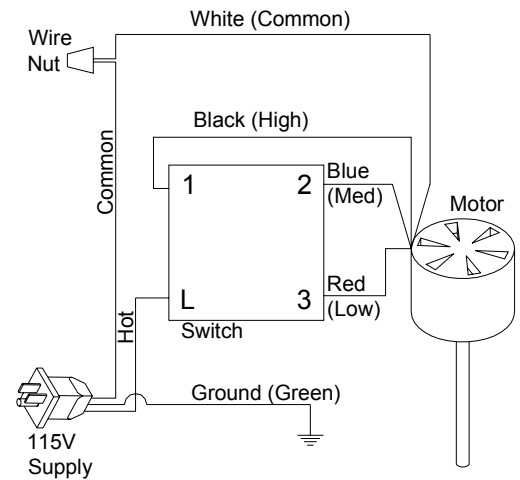
1. It is best to add water before plugging cooler in.
2. Plug cooler into standard 115-120V grounded outlet and turn switch through all positions to ensure proper operation.
3. Check louver to ensure pad is wetting-out evenly.

WARNING

The motor of this cooler is equipped with a thermal overload protection device. If the cooler shuts down by itself for any reason,

it can restart without warning.

To reduce the risk of electrical shock, always unplug the cooler before removing the louver.



Trouble shooting

Caution: Always unplug the cooler before attempting service of any kind!

1. If cooler does not pump water...
 - a. Check water hose connection at pump bowl and at filter pad. Reconnect if loose.
 - b. Water tube may be blocked. Disconnect water tube from water hose, and clean out any obstructions.
 - c. Impeller may have come off bottom of motor shaft. See parts list.
2. If blower does not operate...
 - a. Check for 115V at electrical outlet.
 - b. Check breaker of ruse
 - c. Switch or motor failed. Replace. See parts list.

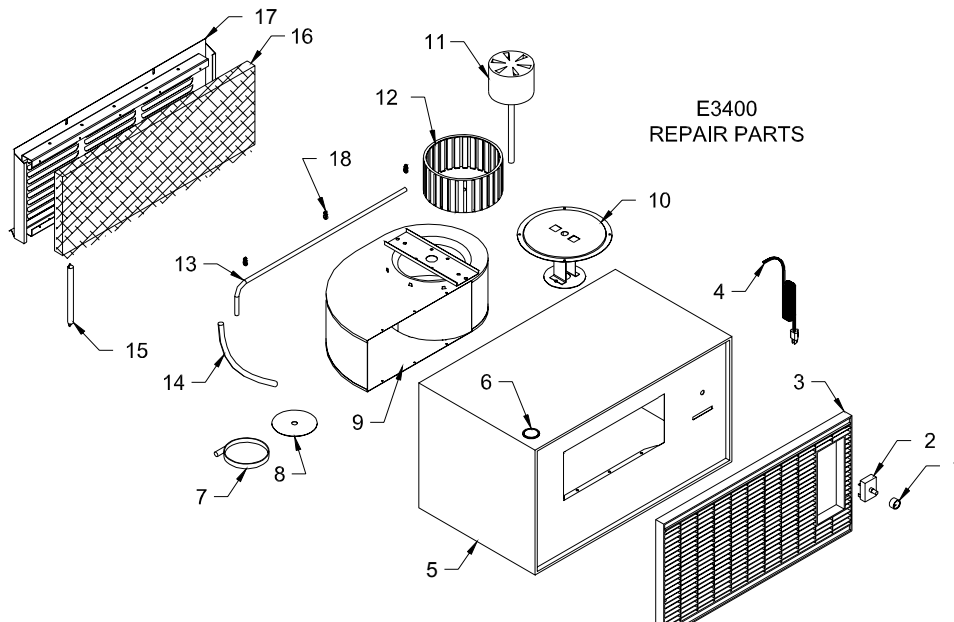
Require Assistance?

Call the COOLER HOTLINE

1-800-643-8341

Monday thru Friday

8:00 a.m. to 4:45 p.m. Central Time



E3400
REPAIR PARTS

Item	Description	Part No.	Qty
1	Knob	70834	1
2	Switch	70534	1
3	Grille	70416	1
4	Cord	595130	1
5	Cooler cabinet	512259	1
6	Pour in cap	515014	1
7	Pump bowl	523038	1
Not shown	Louver assembly	512257	1
8	Pump impeller	523037	1
9	Blower housing	70833	1
10	Pump stand	70831	1
11	Motor	581174	1
12	Blower wheel	584013	1
13	Water tube	516035	1
14	Water hose	598412	1
15	Spring	588005	5
16	Aspen pad	503488	1
17	Louver	512340	1
18	Water tube clip	588010	3

Model no. E3400

The model no. of your evaporative cooler will be found on the backside of the cooler.

How to order repair parts

All parts listed herein may be ordered from:
Essick Air Products
5800 Murray St.
Little Rock, AR 72209

When ordering parts, always give the following information:

1. Part number
2. Part description
3. Model number of cooler

LIMITED WARRANTY

This warranty is extended to the original purchaser only. It does not cover damages incurred during shipping or through accident, neglect, or abuse by the owner. Essick Air Products does not authorize any person or representative to assume any other or different liability in connection with this cooler.

TERMS AND CONDITIONS OF WARRANTY

The **COOLER CABINET** is guaranteed against leakage due to rusting out for **Five Years**. All other original parts provided by Essick Air Products are warranted against defects in material or factory workmanship for One Year.

EXCLUSIONS FROM THE WARRANTY

Essick Air Products is not responsible for incidental or consequential damage resulting from any malfunction.

Essick Air Products is not responsible for any damage occurring from the use of water softeners, chemicals, descale material, or if a higher horsepower motor than what Essick Air Products recommends is used in the unit.

Essick Air Products is not responsible for the cost of service calls to diagnose cause of trouble, or labor charge to repair and/or replace parts.

HOW TO OBTAIN SERVICE UNDER THIS WARRANTY

Contact the Dealer where you purchased the evaporative cooler. If for any reason you are not satisfied with the response for the Dealer, contact Customer Service Department: Essick Air Products Inc. 5800 Murray Street, Little Rock, Arkansas 72209. 1-800-643-8341.

ESSICK AIR PRODUCTS

5800 MURRAY ST
LITTLE ROCK, AR 72209

Date of purchase _____
Purchased from _____

Manual part # 70550