

ULTRACOOOL

Portable Evaporative Cooler



CP18



CP20

Read And Save These Instructions

NOTICE: This Product May Temporarily Produce An Odd Odor When First Turned On. This Is NORMAL And Will Dissipate After A Few Hours.

If you have any problems with this product, please call 1-800-643-8341 BEFORE returning it to your retailer.

Evaporative Cooling

Evaporative cooling is an economical way to cool. Air is cooled while being drawn across wet evaporative media. The movement of this fresh cooled air over the skin is what makes it feel cool. It is important when using an evaporative cooler in an enclosed space to have adequate exhaust by opening windows, doors, etc. Without an outlet to exhaust the air, humidity will build up in the enclosed space and the unit will not cool adequately. It is preferable to have an opening behind the unit to bring in fresh air and another opening across the room to exhaust and help move the air.

Safety Rules

1. Unit must be in the Off Position and Unplugged from power receptacle when performing any maintenance.
2. To reduce the risk of electric shock, plug unit into a properly grounded 120 Volt A.C., 60 Hz receptacle.
3. To reduce the risk of electric shock, install only on a circuit protected with a Ground Fault Circuit Interrupter (GFCI).
4. This appliance is not intended for use by persons (including children) with reduced physical, sensory or mental capabilities, or lack of experience and knowledge, unless they have been given supervision or instruction concerning use of the appliance by a person responsible for their safety. Children should be supervised to ensure that they do not play with the appliance.

⚠ WARNING: To reduce the risk of fire or electric shock, do not use this fan with any “solid-state fan speed control device.”

Cooler Installation

Install Casters

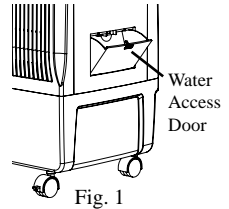
NOTE: Casters are located inside unit. These must be removed before starting unit. See the instructions below for removing the back media frame.

This unit comes equipped with 4 stem casters; 2 locking and 2 non-locking. Before operation turn the unit on its side and press the stem casters into the corner holes. Install the locking caster on one side of the unit and the non-locking casters on the opposite side.

Operation

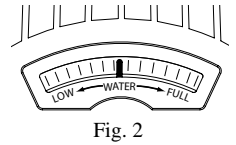
Fill With Water

Open the water access door by pressing firmly at the top of the door to unlatch it (see fig. 1). Fill with a pitcher or water hose. Do Not Overfill. Close the access door, pressing firmly at the top of the door until it latches close.



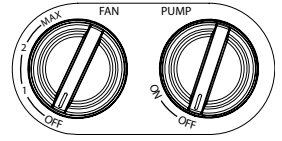
Water Level Indicator

On the front of the unit there is a window to view the level of water in the unit (see fig. 2). The red pointer of the indicator will be in the full position with water near the top of the reservoir. As the water level is decreased in the unit, the indicator will fall in the window until it reaches the Low indicator. Fill unit with water when low.



Fan Operation

This unit has two separate switches, One for the fan and one for the pump. See figure 3. The fan switch has four positions: Off, 1, 2 and Max. Turn the fan knob to position "1" to start the unit in low speed, "2" for middle speed, and "Max" for High speed. Turn knob to "Off" to turn off the fan.



Pump / Cooler Operation

To operate this unit as an evaporative cooler, the unit must be filled with water and the pump powered on. Turn the pump knob to "ON" to activate pump. To operate the unit as a fan only, turn the pump knob to "OFF".

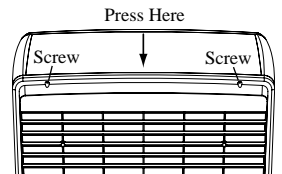
Note: Make sure to turn off both the fan and pump when not in use.

Maintenance

⚠ WARNING: Before doing any maintenance be sure unit is unplugged.

Remove Media Frame

To remove the media frame, first remove the two screws located at the top of the frame. Press down at the top center of the unit, near the media frame, until it unsnaps from the media frame. See Fig. 4.



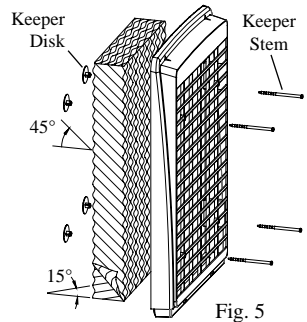
Drain Unit

To drain the unit, remove the media frame and remove the rubber drain stopper from inside the bottom of the unit by pulling it out of the drain hole. The unit should be drained periodically to keep the water fresh. We recommend draining the unit once a week. Drain the water from the unit when it will not be used for an extended period.

Clean / Replace Evaporative Media

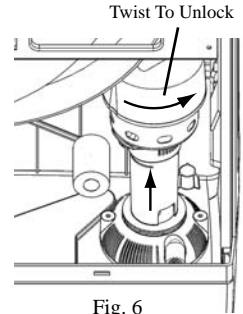
The evaporative media should be cleaned twice a season or when needed. To clean the media, rinse with clean water. Light scrubbing might be necessary. Be careful not to damage media. After about 2 years, or when it becomes clogged, the media will need to be replaced. To remove the media you will need to remove the plastic disk from the stem. Push the keeper stem through the keeper disk until you can grab the disk to remove it. Refer to fig. 5.

When replacing the evaporative media, install it so that the steeper flute angle of the media is sloping down towards the media frame (see fig. 4). Push the keeper stems through the media from the back of the media frame and press the keeper disks onto the stems to secure the media in place.



Clean / Replace Pump

On occasion you may need to clean or replace the pump. To remove the pump you will need to remove it from its base. Unlock the pump from the base by twisting the pump counterclockwise. Lift the pump up out away from the base. See figure 6. Make sure there is no debris in the pump or hose. Clean the base to make sure the openings are not blocked. To remove the pump completely from the unit, disconnect the cord from the in-line connector. Replace pump in opposite order. Press the pump into the base and rotate it clockwise to lock it in place. Ensure pump base is securely attached to cooler.



Limited Warranty

This warranty is extended to the original purchaser of an evaporative cooler installed and used under normal conditions. It does not cover damages incurred through accident, neglect, or abuse by the owner. We do not authorize any person or representative to assume for us any other or different liability in connection with this product.

Terms And Conditions Of The Warranty

For One Year from date of purchase, we will replace any original component provided by Champion Cooler which fails due to any defect in material or factory workmanship only.

Exclusions From The Warranty

We are not responsible for replacement of evaporative media. These are disposable components and should be replaced periodically. We are not responsible for any incidental or consequential damage resulting from any malfunction.

We are not responsible for any damage received from the use of water softeners, chemicals, de-scale material or plastic wrap.

We are not responsible for the cost of service calls to diagnose the cause of trouble, or labor charge to repair and/or replace parts.

How To Obtain Service Under This Warranty

Contact the Dealer where you purchased the evaporative cooler. If for any reason you are not satisfied with the response from the dealer, contact the Customer Service Department: Champion Cooler, 5800 Murray Street, Little Rock, Arkansas 72209. 1-800-643-8341. info@championcooler.com

This limited warranty applies to the original purchaser only.

Register your product online at www.championcooler.com/eac/onlineregistration-eac.htm

Trouble Shooting

Problem:

Cooler does not pump water

Cause/Remedy:

- Pump is not activated. Switch pump knob to “ON”.
- Water level is low. Fill with water and make sure Pump is activated.
- Pump may be defective. Replace pump.

Fan does not operate

- Check that unit is plugged into a 120V power receptacle.
- Check the fuse or breaker.
- If connected to a GFCI outlet, check if it is tripped.

Replacement Parts

<u>No.</u>	<u>Description</u>	<u>CP18</u>	<u>CP20</u>
1	Evaporative Media.....	110132-4	110132-4
2	Evaporative Media Frame Assembly.....	110875-1	110875-2
3	Set Of (4) Keepers.....	110871	110871
4	Pump.....	110440-1	110440-1
5	Drain Plug.....	110698-1	110698-1
6	Swivel Casters - Non-Locking.....	110822-6	110822-6
7	Swivel Casters - Locking.....	110822-7	110822-7

