

Manual De Instrucción

ULTRACOOOL

Enfriador Evaporativo Móvil

Modelo
M150



Felicitaciones en su compra de esta enfriador. ¡Es el mejor enfriador que su dinero puede comprar! El diseño único de este enfriador evaporativo móvil le provea dos características. Primero, convierte el aire caliente y seco a una brisa refrescante. Segundo, puede ser utilizado como ventilador para circular el aire cuando hay demasiada humedad en el aire.

**Essick Air Products /
Champion Cooler**
5800 Murray Street
Little Rock, AR 72209
www.essickair.com

Instruction Manual

ULTRACOOOL

Mobile Evaporative Cooler

Model
M150



Congratulations on your cooler purchase. It's the best cooler your money can buy! The unique design of this mobile evaporative cooler provides you with two features. First, it converts hot, dry air into a cool refreshing breeze. Secondly, it can be used as a fan to circulate air when there is too much humidity in the air.

**Essick Air Products /
Champion Cooler**
5800 Murray Street
Little Rock, AR 72209
www.essickair.com

Before Operation Unpack your cooler and install the casters. Slip the stems of the casters into the holes provided in the bottom of the front and back grille.

EVAPORATIVE COOLER OPERATION



CAUTION: To reduce the risk of fire or electrical shock, do not use this fan with any solid state speed control device.

Select the area you wish to cool. Evaporative coolers work best near a partially opened door or window to draw in fresh air. An equal amount of air should be discharged out of the room to dispel heat and humidity.

Fill Reservoir Fill the reservoir from the back. The reservoir holds 5 1/2 gallons of water. **DO NOT OVER FILL.** Water will leak out and could cause water damage to the surrounding area. If the reservoir runs dry, it will not harm the pump. When transporting the unit to a different location, be very careful not to spill the water. It is best to re-locate the cooler, and then add water.

Float Installation Included is a float for continuous fill. To attach the float, remove the back grille. Remove the nuts from the float and insert the float into the water shield and then through the hole in the housing. Secure the float with the nut that was removed. You may connect either a 1/4 inch hose or a garden hose using the garden hose adapter. Adjust the float so that the water level is about an inch below the top of the reservoir. Reinstall the back grille.

Operation Plug the electrical cord into a 115-120 volt grounded outlet. You may operate your cooler on one of three speeds: low, medium or high. Turn the switch knob clockwise to activate the pump and fan. This will cool the air. Turn the switch counterclockwise to operate the cooler as a fan only (pump will be off).

MAINTENANCE



CAUTION: To reduce the risk of fire, always unplug the cooler before attempting service of any kind.

Motor No oil or lubrication is necessary. The motor is permanently lubricated at the factory.

Pump No oil or lubrication is necessary. Clean any debris from under the pump in the inlet area.

Filter Remove the filter from the rear grille and rinse with water. Be careful not to damage the filter! The filter should be replaced every two years or if it becomes clogged.

Water Tank Drain and clean the water tank. To drain, remove the back grille and disconnect the clear hose from the black tube. Turn unit on cool and pump out most of the water. Wipe dry and clean with a towel. Before reattaching the back grille, reconnect the clear hose to the black water tube.

TROUBLE SHOOTING



CAUTION: Always unplug the cooler before attempting service of any kind.

PROBLEM: Cooler Does Not Pump Water
POSSIBLE CAUSE/REMEDY:

1. The pump hose may have worked loose. Check the connection at the pump and at the water tube located in the back grille assembly. Reconnect pump hose if necessary.

2. The water tube may be blocked. Remove the tube and clean it out. Make sure water holes are clear.

3. The pump or switch may be defective. Replace pump or switch, if necessary.

PROBLEM: Fan Does Not Operate
POSSIBLE CAUSE/REMEDY:

1. Verify there is 115-volt power at the electrical outlet. Check the fuse or breaker.

1. The fan switch or motor may be defective. Replace if necessary.

LIMITED WARRANTY

This warranty is extended to the original purchaser only. It does not cover damages incurred during shipping or through accident, neglect, or abuse by the owner. Essick Air Products/Champion Cooler does not authorize any person or representative to assume any other or different liability in connection with this cooler.

Terms And Conditions Of Warranty All original parts provided by Essick Air Products/Champion Cooler are warranted against defects in material or factory workmanship for one year.

Exclusions From Warranty Essick Air Products/Champion Cooler is not responsible for incidental or consequential damage resulting from any malfunction.

Essick Air Products/Champion Cooler is not responsible for any damage occurring from the use of water softeners, chemicals, de-scale material, or if a higher horsepower motor is used in the unit other than what Essick Air Products recommends.

Essick Air Products/Champion Cooler is not responsible for the cost of service calls to diagnose cause of trouble, or labor charge to repair and/or replace parts.

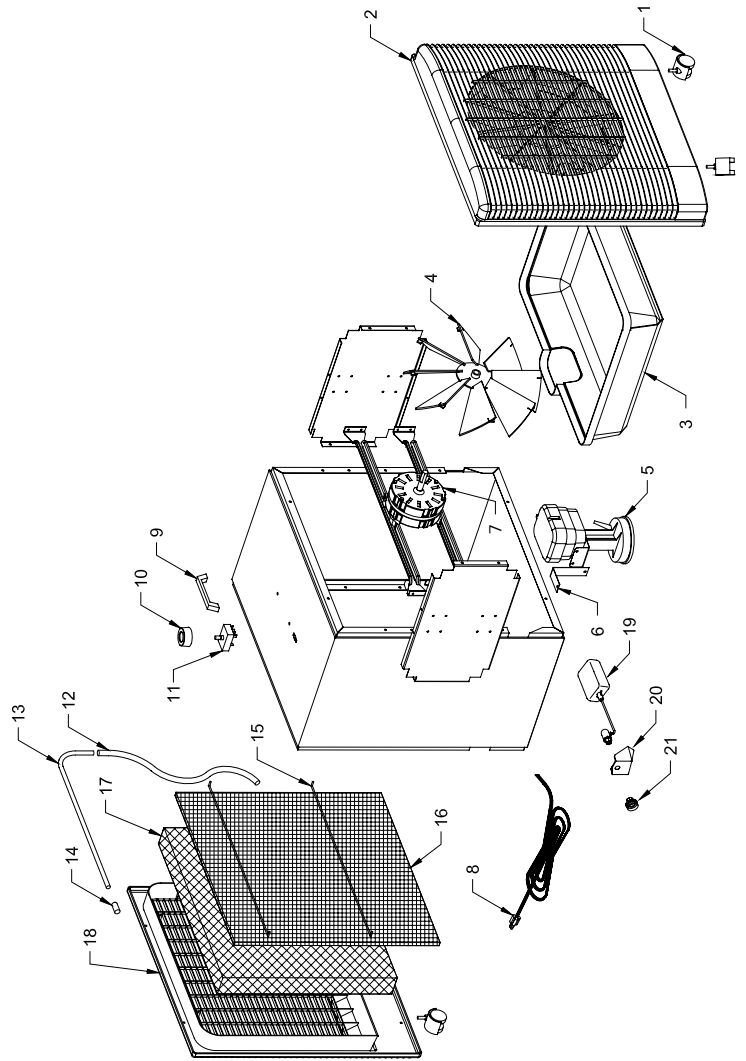
How To Obtain Service Under This Warranty Contact the Dealer where you purchased the evaporative cooler. If for any reason you are not satisfied with the response from the Dealer, contact the Customer Service Department: Essick Air Products, 5800 Murray Street, Little Rock, Arkansas 72209 or call 800-643-8341.

Register Product Register your product online at: www.essickair.com/eac/onlineregistration-eac.htm

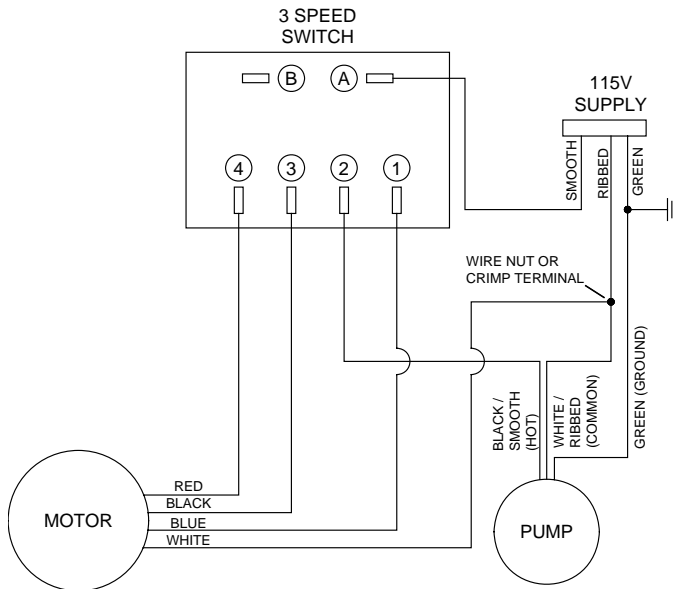
REPLACEMENT PARTS LIST

LISTA DE PIEZAS DE RECAMBIO

No.	Part No.	Description	Descripción
1	110822-4	Casters (4 req'd)	Ruedecilla (4 req'd)
2	110845-22	Front Grille	Rejilla Anterior
3	110850-2	Reservoir	Depósito De Agua
4	110846-2	Fan Blade	Hoja De Ventilador
5	110438	Pump	Bomba
6	224135-001	Pump Mount	Soporte De La Bomba
7	110441-4	Motor	Motor
8	110394-2	Power Cord	Cable De Corriente
9	110849-2	Handle	Asidero
10	110845-24	Knob	Perilla
11	110425-1	Switch	Interruptor
12	310718-1	Hose	Manga
13	110588-1	Tube	Tubo
14	110721	Tube Cap	Tapa Del Tubo
15	155001-14	Pad Retainer (2 req'd)	Soporte De Filtros (2 req'd)
16	110121-1	Poly Pad	Filtro De Poliester
17	110122-1	Media	Medio Evaporativo
18	110845-21	Back Grille	Rejilla Posterior
19	FL-C	Float	Flotador
20	110852	Water Shield	Salpicadero del Flotador
21	110824	Garden Hose Adapter	Adaptador para Manguera De Jardín



WIRING DIAGRAM



ESQUEMA DE CABLEADO

