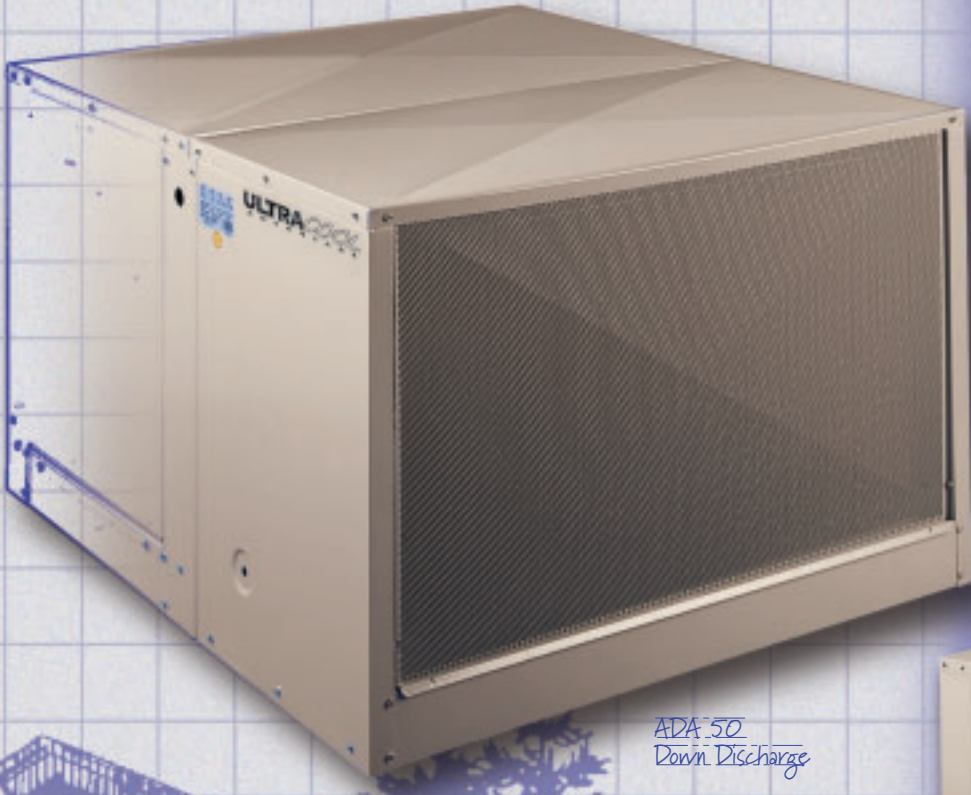


A D V A N T A G E

ULTRACOOOL

CHAMPION RESIDENTIAL ULTRACOOOL



ADA 50
Down Discharge

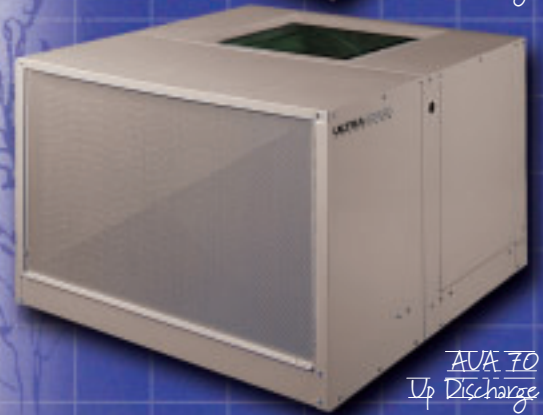
RESIDENTIAL

EVAPORATIVE

AIR COOLERS



ASA 35
Side Discharge

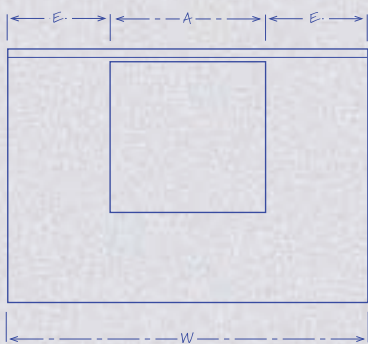
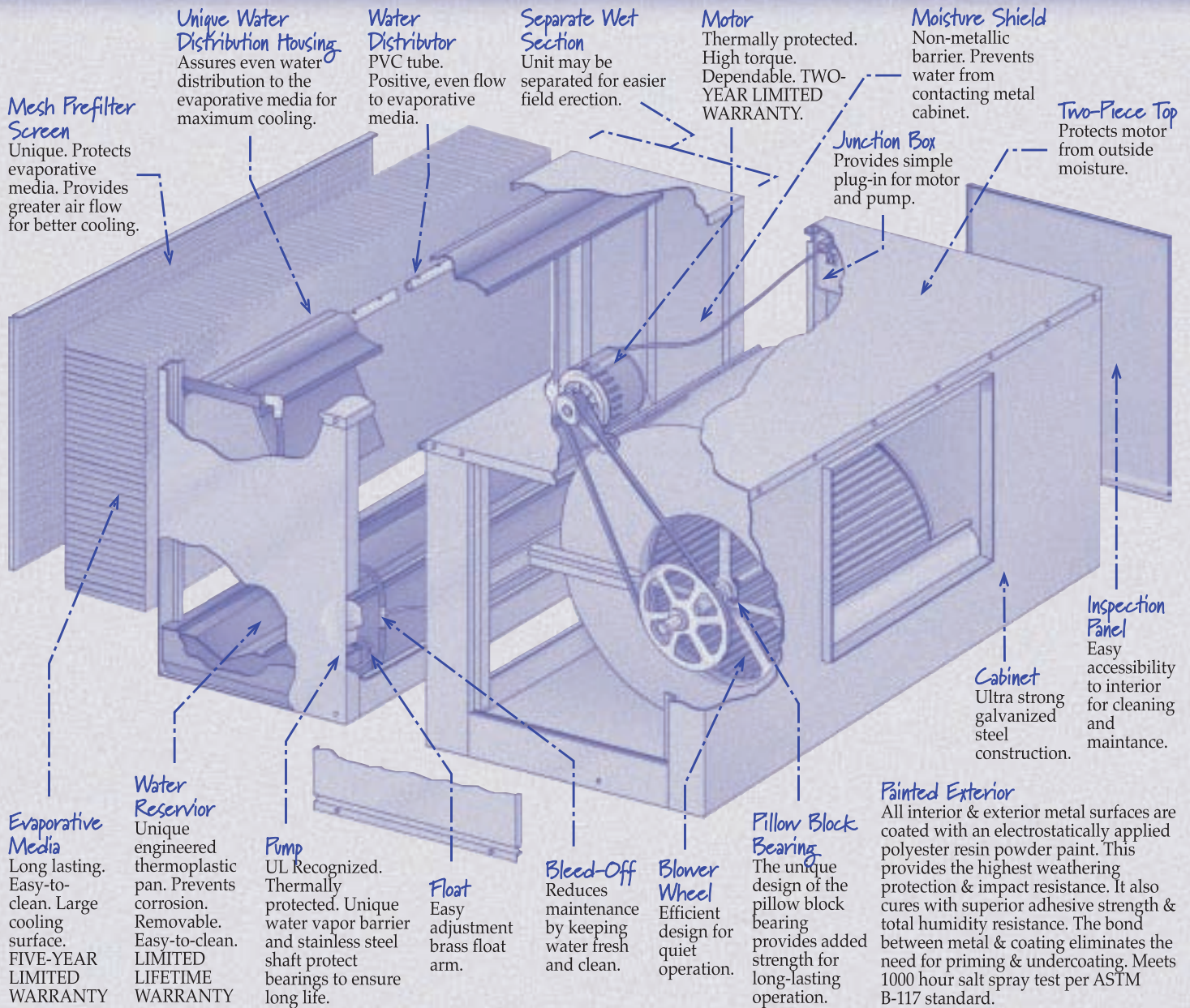


AUA 70
Up Discharge

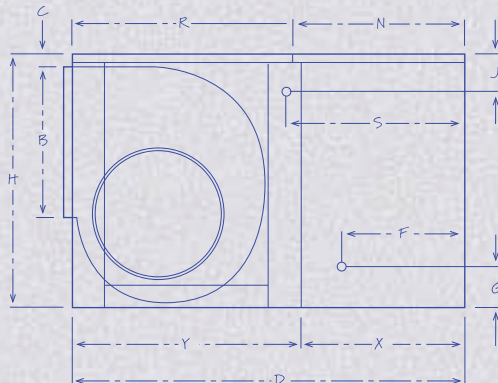


CHAMPION
COOLER

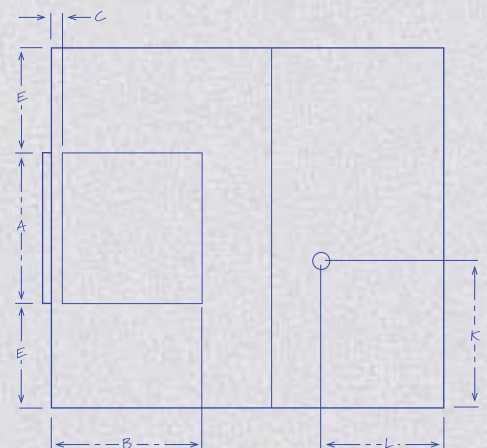
STANDARD FEATURES



FRONT VIEW



SIDE VIEW



TOP VIEW

DIMENSIONS

Match letters on illustrations to Cabinet Dimensions in the Specification Tables on next page.

SPECIFICATIONS

CABINET DIMENSIONS*

| MODEL NO. | GENERAL DIMENSIONS | | | DUCT | | | | WATER SERVICE LOCATION | ELECTRICAL SERVICE LOCATION | DRAIN LOCATION | | BLOWER WHEEL | | | BELT LENGTH | WEIGHT | | MODULE LENGTH | | TOP PAN LENGTH | | | |
|-------------------------|--------------------|----|----|-------------------|-------------------|------------------|--------------------|------------------------|-----------------------------|-------------------|-------------------|--------------|--------------------|-------------------|-------------------|--------|-------|---------------|-----|---------------------|-------------------|--------------------|--------------------|
| | | | | OPENING | | LOCATION | | | | | | DIA. | WIDTH | SHAFT | | OPER. | SHIP. | X | Y | R | N | | |
| | H | W | D | A | B | C | E | F | G | S | J | | | | K | | | | | | | L | |
| ADA35 ASA35 | 22 ^{9/16} | 34 | 40 | 13 ^{5/8} | 13 ^{5/8} | 1 | 10 ^{3/16} | 14 ^{7/16} | 5 ^{1/4} | 20 ^{1/2} | 3 ^{5/8} | 17 | 14 ^{5/8} | 12 ^{7/8} | 12 ^{1/8} | 1 | 43 | 187 | 130 | 17 ^{15/16} | 22 | - | - |
| | | | | | | 1 ^{7/8} | | | | | | | | | | | 46 | | | | | | |
| ADA50 ASA50 AUA50 | 28 | 42 | 45 | 17 ^{3/4} | 17 ^{3/4} | 1 ^{1/2} | 12 ^{1/8} | 13 | 5 ^{3/4} | 20 ^{3/8} | 3 ^{9/16} | 17 | 14 ^{1/16} | 16 | 16 ^{3/4} | 1 | 52† | 252 | 179 | 18 ^{1/4} | 26 ^{3/4} | 25 ^{7/8} | 19 ^{1/16} |
| | | | | | | | | | | | | | | | | | 57 | | | | | 25 ^{7/8} | 19 ^{1/16} |
| | | | | | | | | | | | | | | | | | 51 | | | | | 32 ^{3/16} | 12 ^{3/4} |
| ADA5012 ASA5012 | 28 | 42 | 49 | 17 ^{3/4} | 17 ^{3/4} | 1 ^{1/2} | 12 ^{1/8} | 17 | 5 ^{3/4} | 24 ^{3/8} | 3 ^{9/16} | 17 | 18 ^{1/16} | 16 | 16 ^{3/4} | 1 | 52† | 272 | 192 | 22 ^{1/4} | 26 ^{3/4} | 25 ^{7/8} | 23 ^{1/16} |
| ADA70 ASA70 AUA70 | 34 ^{5/8} | 42 | 48 | 19 ^{3/4} | 19 ^{3/4} | 1 ^{1/2} | 11 ^{1/8} | 13 | 5 ^{3/4} | 20 ^{3/8} | 3 ^{9/16} | 17 | 14 ^{1/16} | 20 | 16 ^{3/4} | 1 | 64 | 294 | 215 | 18 ^{1/4} | 29 ^{3/4} | 28 ^{7/8} | 19 ^{1/16} |
| | | | | | | | | | | | | | | | | | 67 | | | | | 28 ^{7/8} | 19 ^{1/16} |
| | | | | | | | | | | | | | | | | | 67 | | | | | 35 ^{3/16} | 12 ^{3/4} |
| ADA7012 ASA7012 | 34 ^{5/8} | 42 | 52 | 19 ^{3/4} | 19 ^{3/4} | 1 ^{1/2} | 11 ^{1/8} | 17 | 5 ^{3/4} | 24 ^{3/8} | 3 ^{9/16} | 17 | 18 ^{1/16} | 20 | 16 ^{3/4} | 1 | 64 | 321 | 235 | 22 ^{1/4} | 29 ^{3/4} | 28 ^{7/8} | 23 ^{1/16} |
| | | | | | | | | | | | | | | | | | 67 | | | | | | |

*All dimensions in inches. † 3/4 H.P. requires a 53" belt.

ELECTRICAL SPECIFICATIONS*

CFM**** INCHES STATIC PRESSURE

| MODEL NO. | INDUSTRY STANDARD RATING | H.P. | SPEEDS** | PHASE | VOLTS** | AMPS*** | 0' | 0.1' | 0.2' | 0.3' | 0.4' | 0.5' | 0.6' |
|-----------------------|--------------------------|------|----------|-------|---------|---------|------|------|------|------|------|------|------|
| ADA/ASA 35 | 3000 | 1/3 | 1 OR 2 | 1 | 115 | 8.3 | 2022 | 1871 | 1738 | 1607 | 1470 | 1311 | 1107 |
| | 3500 | 1/2 | | | | | 2315 | 2178 | 2061 | 1947 | 1834 | 1714 | 1581 |
| ADA/ASA/ AUA 50 | 4000 | 1/3 | 1 OR 2 | 1 | 115 | 8.3 | 2873 | 2650 | 2390 | 2060 | 1806 | 1600 | 1370 |
| | 4400 | 1/2 | | | | | 3321 | 3110 | 2910 | 2650 | 2400 | 2130 | 1940 |
| | 5000 | 3/4 | | | | | 3788 | 3630 | 3450 | 3260 | 3020 | 2806 | 2570 |
| ADA/ASA 5012 | 4000 | 1/3 | 1 OR 2 | 1 | 115 | 8.3 | 2750 | 2566 | 2323 | 1997 | 1629 | 1313 | 1039 |
| | 4400 | 1/2 | | | | | 3149 | 2993 | 2803 | 2564 | 2266 | 1944 | 1648 |
| | 5000 | 3/4 | | | | | 3606 | 3472 | 3317 | 3135 | 2918 | 2661 | 2379 |
| ADA/ASA/ AUA 70 | 5400 | 1/2 | 1 OR 2 | 1 | 115 | 10.9 | 3987 | 3750 | 3510 | 3270 | 3055 | 2610 | 2210 |
| | 6000 | 3/4 | | | | | 4564 | 4350 | 4130 | 3940 | 3730 | 3580 | 3180 |
| | 7000 | 1 | | | | | 5024 | 4820 | 4630 | 4450 | 4280 | 4100 | 3900 |
| ADA/ASA 7012 | 5400 | 1/2 | 1 OR 2 | 1 | 115 | 10.9 | 3922 | 3685 | 3462 | 3212 | 2898 | 2471 | 2002 |
| | 6000 | 3/4 | | | | | 4488 | 4279 | 4087 | 3888 | 3662 | 3392 | 3049 |
| | 7000 | 1 | | | | | 4941 | 4747 | 4572 | 4394 | 4208 | 3996 | 3749 |

*All dimensions in inches. **Motors shipped separately. ***Blower motor (high speed) and pumps. ****Cubic feet per minute. CFM ratings are based on test data to AMCA (Air Movement and Control Association) standard 210 by an independent AMCA approved laboratory.

OPTIONAL THERMOSTAT ACCESSORY



STANDARD FEATURES

- Large LED readout is easy to read
- Easy 4-wire hook up makes installation quick and simple
- Durable rain-proof control box ensures safety
- Thermostat controlled dump cycle adds convenience
- Dump cycle control is compatible with any pump!
- Two-stage operation provides better comfort and even temperatures
- Easy to program and operate

Contact your local Champion dealer today for more information on why an UltraCool Advantage[®] Evaporative Cooler should be your First Choice. Only Choice.

SELECTING AN ULTRACOOOL COOLER

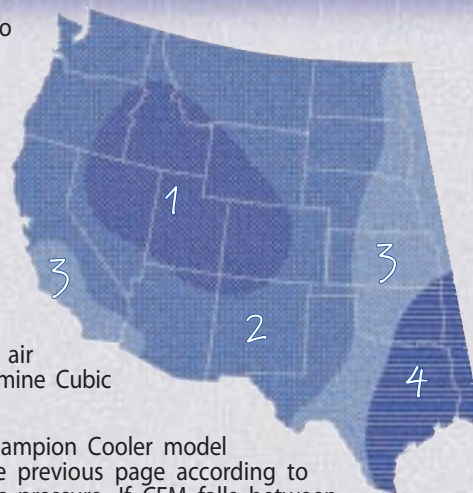
1. Consult zone map to find correct zone.

2. Consult table below to find correct "Minutes per Air Change" for your zone.

3. Determine area to be cooled in cubic feet (building length x width x height).

4. Divide cubic feet (step 3) by minutes per air change (step 2) to determine Cubic Feet per Minute (CFM).

5. Select the correct Champion Cooler model in the data table on the previous page according to CFM and expected static pressure. If CFM falls between models, choose the larger model.



MINUTES PER AIR CHANGE

| INTERIOR HEAT LOAD | EXTERIOR HEAT LOAD | ZONE | | | |
|--------------------|--------------------|------|-----|-----|-----|
| | | 1 | 2 | 3 | 4 |
| HIGH | EXPOSED | 2 | 1.5 | 1.3 | .7 |
| HIGH | INSULATED | 3 | 2 | 1.5 | 1 |
| NORMAL | EXPOSED | 3 | 2 | 1.5 | 1 |
| NORMAL | INSULATED | 4 | 3 | 2 | 1.3 |

• **INTERIOR HEAT LOAD:** High means places with unusual heat sources from hot equipment or processes, crowded conditions, etc. Normal means no unusual heat sources - typical home or office.

• **EXTERIOR HEAT LOAD:** Exposed means walls, roof exposed to sun, poor insulations, etc. Insulated means walls and roof well insulated and/or shaded.

EXAMPLE - A house in Phoenix, AZ, 40 feet long by 30 feet wide with 8-foot ceiling. Well insulated, no unusual heat sources.

1. $30 \times 40 \times 8 = 9,600$ cubic feet

2. Zone 2

3. Minutes per Air Change = 3

4. $9,600 \div 3 = 3,200$ CFM

5. Referring to CFM table inside this brochure, cooler model ADA50 with a 3/4 h.p. motor is indicated, assuming a typical static pressure of .2" W.G.

Designed with You in Mind!

CHAMPION COOLERS



 Crafted With Pride In The USA

5800 Murray, Little Rock, AR 72209 800-643-8341 www.championcooler.com

Catalog No. CUCB-Sept. 2005