

This Owner's Manual is provided and hosted by [Appliance Factory Parts](#).



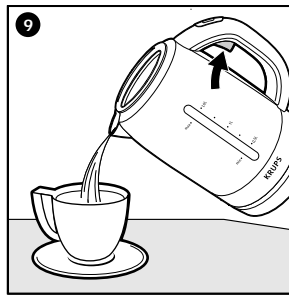
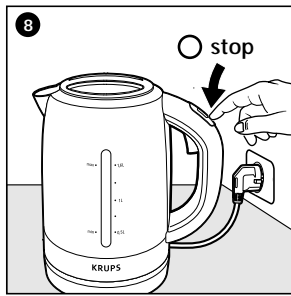
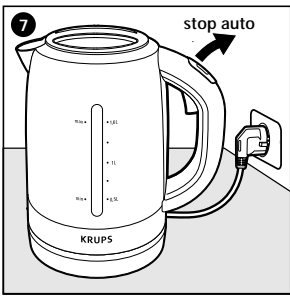
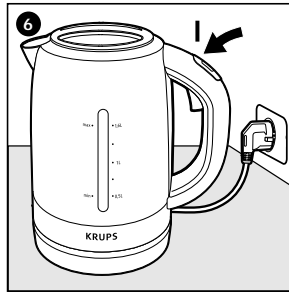
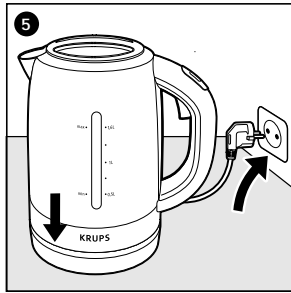
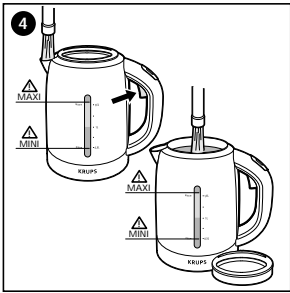
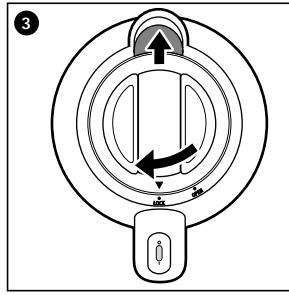
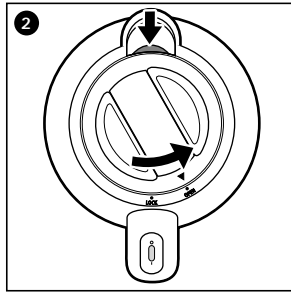
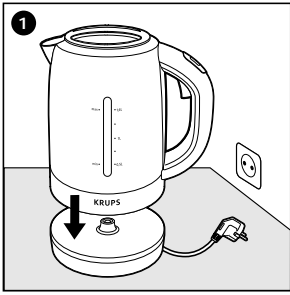
KRUPS FLF2-J1 Owner's Manual

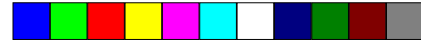
[Shop genuine replacement parts for KRUPS FLF2-J1](#)



[Find Your KRUPS Small Appliance Parts - Select From 175 Models](#)

----- Manual continues below -----





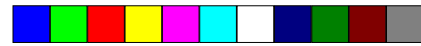
USA

IMPORTANT SAFETY INSTRUCTIONS

When using electrical appliances, basic safety precautions should always be followed, including the following :

Read all instructions before use

1. Use appliance only for its intended use.
2. Do not touch hot surfaces. High temperatures are generated during use which could cause burns. Always lift the kettle by handle.
3. To prevent fire, electric shock and injury, do not immerse cord, plugs, base or kettle in water or other liquids.
4. Close supervision is necessary when any appliance is used by or near children. Please keep the kettle and its supply cord out of the reach of children. Warn other users, especially children, of the possible dangers (eg. escaping steam, hot water, hot lid, etc.)
5. Do not leave appliance unattended while in use. Unplug from outlet when not in use and before cleaning. Allow to cool before putting on or taking off parts, and before cleaning the appliance.
6. Do not operate any appliance which has been damaged in any way or has a defective cord or plug. Return it to the nearest authorized service center for examination, repair or adjustment.
7. The use of accessory attachments not recommended by the appliance manufacturer may result in fire, electric shock or injury.
8. Do not use outdoors.
9. Do not let cord hang over the edge of the table or counter, or touch hot surfaces. Position the kettle to the rear of work surfaces to prevent overhanging of the power cord. Water can remain hot for a considerable time after boiling and can present a scald hazard.
10. Do not place on or near a hot gas or electric burner or in a heated oven.



11. For all models : to disconnect, switch-off the appliance and then remove plug from wall outlet. Never yank cord to disconnect from outlet, instead grasp plug and pull to disconnect. For corded models : always attach the plug to the appliance first, then plug the cord into the wall outlet.
12. Do not place the base of your kettle in a metal tray. If water spills over into the tray and a build-up occurs, it could become dangerous to touch.
13. Before pouring, wait until the kettle has stopped boiling and then pour steadily. If the kettle is tipped too much, the lid may fall off or open.
14. Never lift the lid of the kettle while water is boiling.
15. **WARNING** : a cordless kettle must never be filled on its base.
16. Your Krups appliance is intended for household use only.
17. This is a 1750 watt appliance. To avoid a circuit, do not operate a high wattage appliance on the same circuit.



SAVE THESE INSTRUCTIONS

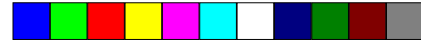


SHORT CORD INSTRUCTIONS

- a. We do not recommend using an extension cord with this device.
- b. If an extension cord is absolutely necessary the marked electrical rating should be at least as great as the electrical rating of the appliance. Cords rated for less amperage may overheat. Care should be taken to arrange the cord so that it cannot be pulled or tripped over. If appliance is the grounded type, the extension cord should be a grounding type 3-wire cord.
- c. This appliance may have a polarized plug (one blade is wider than the other). To reduce the risk of electric shock, this plug is intended to fit into a polarized outlet only one way. If it does not fit, contact a qualified electrician. Do not attempt to modify the plug in any way.

KRUPS 5





Recommendations

- Do not use abrasive pads for cleaning.
- To remove the anti-scale filter, take the kettle off its base, and leave it to cool. Never remove the filter when the appliance contains hot water.

Any connection error will nullify the warranty.

- **The warranty excludes kettles that have not been maintained properly and descaled regularly.**
- Never use any anti-scaling method other than that recommended.

Use

- Before first use, rinse the inside of your kettle, and boil and empty it twice.
- Place your kettle, on the base, on a stable surface. **(1)**
Remove the lid by aligning the " " mark with the "open" position and lifting it off **(2)**. To close the kettle, engage the lid, with the spout cover set back, by placing the " " mark to "open" and turn it clockwise to the "lock" position. The protective cover will block off the pouring spout. **(3)**
- With the kettle disconnected and removed from its base, fill it through the spout or lid. Please observe the minimum and the maximum fill levels. **(4)**
- Close the lid **(3)**, and place the kettle on its base. **(5)**
- Switch on by pressing the "I" switch. **(6)**
- The kettle stops automatically as soon as the water boils. **(7)**
- You can also switch the kettle off at any time during the heating process by pressing the "O" switch. **(8)**
- To pour, squeeze the release latch under the handle. **(9)**
- Empty the water from your kettle completely after each use.

Cleaning

To clean your kettle:

- Disconnect it and remove it from its base.
- Leave it to cool, and then clean it with a damp sponge.

To clean the filter (models with filter):

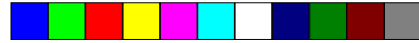
Clean the filter regularly. Rinse it in clean running water and use a nylon brush when needed.

De-scaling

- Descale your kettle regularly.
- Use:
 - 1) a descaler specifically intended for PLASTIC kettles. Follow the manufacturer's instructions closely.
 - 2) or commercial white vinegar at 8°C. Pour 1/2 l of vinegar into the kettle. Leave it to work for one hour without heating.
 - 3) or citric acid. Boil 0.5 l of water. Add 25 g of citric acid. Leave it to work for 15 minutes.
- Repeat if necessary.
- If you are using citric acid, always dilute it with water.
- **Whatever method you use, always empty your kettle and rinse it 5 or 6 times.**
- **Never descale your kettle when there is no liquid inside (descaler, citric acid..).**
- Before using again, rinse with cold water then boil (max level) and discard the water twice without drinking it.

In the event of a problem

- Check :
 - . the connection,
 - . that the kettle is correctly positioned on its base,
 - . that the switch is in the "on" position by pressing "I" .
 - . that the lid is locked in the "lock" position and that the protective cover is blocking off the spout
 - . that the kettle has not been used without water. In this case:
take the kettle off its base, fill the appliance with cold water, then try again.



- If your appliance works only intermittently before the boiling point or stops before reaching the boiling point, it is probably scaled up.

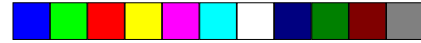
If your appliance is still not working, contact a KRUPS approved service center.

Troubleshooting

Problem	Possible Cause	Solution
Stops before boiling	Kettle not plugged in.	Check that plug is securely in the electrical outlet.
	No water or scale build-up.	Leave the kettle to cool and then fill with water. Use the switch to turn it on. The kettle should begin to work again after about 15 seconds. Consult descaling section of instructions for information and removing scale build up.
Water tastes like plastic.	New kettle.	Kettle should be boiled twice and water discarded before use. If problem persists, fill kettle to max and boil two teaspoons of bicarbonate of soda. Boil and throw away water. Rinse kettle thoroughly.

Environment protection

The packaging of your product is recyclable. Do not dispose of it with the rest of your waste but rather recycle the packaging or bring it to your nearest recycling facility.



LIMITED WARRANTY

This Krups product is warranted for 1 year from the date of purchase against defects in material and workmanship. During this period, the Krups product that, upon inspection by Krups, is proved defective, will be repaired or replaced, at Krups's option, without charge to the customer. If a replacement product is sent, it will carry the remaining warranty of the original product. This warranty does not apply to any defect arising from a buyer's or user's misuse of the product, negligence, failure to follow Krups' instructions, use on current or voltage other than that stamped on the product, wear and tear, alteration or repair not authorized by Krups, or use for commercial purposes.

THE WARRANTIES SET FORTH HEREIN ARE EXCLUSIVE AND NO OTHER WARRANTIES, EXPRESS OR IMPLIED, INCLUDING BUT NOT LIMITED TO ANY WARRANTY OF MERCHANTABILITY OR FITNESS FOR A PARTICULAR PURPOSE OR USE, ARE MADE BY KRUPS OR ARE AUTHORIZED TO BE MADE WITH RESPECT TO THE PRODUCT.

Some states do not allow limitation on how long an implied warranty lasts or do not allow the exclusion of incidental or consequential damages, so the above limitations may not apply to you. This warranty gives you specific legal rights, and you may also have other rights which vary from state to state.

If you believe your product is defective, bring the product (or send it, postage prepaid) along with proof of purchase to the nearest authorized Krups Service Center. (Please visit our website at www.KrupsUSA.com or call 1-800-526-5377 for the address of the nearest authorized Krups Service Center).

If you send the product, please include a letter explaining the nature of the claimed defect.

If you have additional questions, please call our consumer service department at 1-800-526-5377 Monday through Friday from 8:30am - 7:00pm (EST). Please note hours are subject to change. Before calling the Consumer Service Department, please have the type number of your Krups appliance available.

You must have this information before calling our Consumer Service department so that we may be better answer your questions.

