

SPECIFICATIONS & SUBMITTAL DATA

FEATURES:

- Heavy gauge galvanized steel cabinet
- Electrostatically applied polyester powder coating finish
- Thermoplastic water reservoir and plastic media shield prevent water from contacting metal cabinet
- Long life efficient media
- Removable wet section for easier installation (except ASA/ADA35)
- Perforated prefilter screen provides greater airflow for better cooling
- Low maintenance and trouble free
- Made in the U.S.A.



MODELS

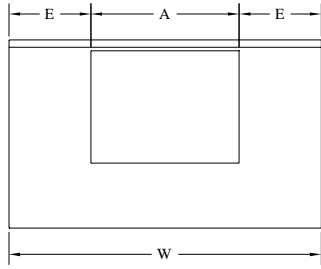
ASA35, ADA35
ASA51, ADA51, AUA51
ASA5112, ADA5112, AUA5112
ASA71, ADA71, AUA71
ASA7112, ADA7112, AUA7112

Project	
Location	
Architect	
Engineer	
Contractor	
Submitted By	Date

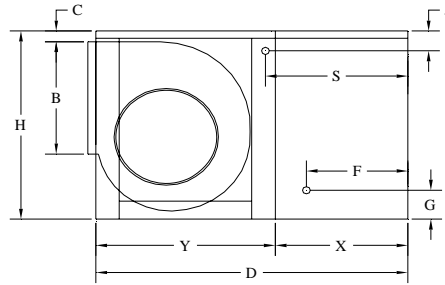
Ref. No.	Cooler Model No.	Qty.	CFM	Static Pressure	Motor	HP	Speed	Volts	Phase	Optional Accessories
1										
2										
3										
4										
5										
6										
7										
8										
9										

Notes

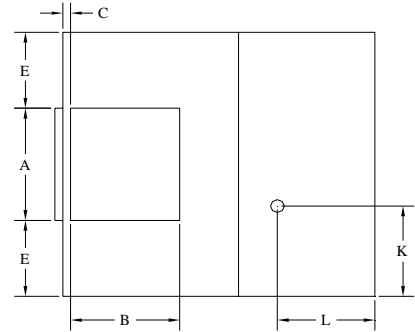
CHAMPION COOLER
 5800 Murray, Little Rock, AR 72209
 1-800-643-8341
 info@championcooler.com



FRONT VIEW



SIDE VIEW



TOP VIEW

CABINET DIMENSIONS*

Model No.	General Dimensions			Duct				Water Service Location		Electrical Service Location		Drain Location		Module Length		Belt Length	Blower Wheel			Weight (lbs.)	
				Opening		Location											Dia.	Width	Shaft	Oper.	Ship.
	H	W	D	A	B	C	E	F	G	S	J	K	L	X	Y						
ADA35 ASA35	22 9/16	34	40	13 5/8	13 5/8	1 1 7/8	10 3/16	14 7/16	5 1/4	20 1/2	3 5/8	17	14 5/8	17 15/16	22	43 46	12 7/8	12 1/8	1	187	130
ADA51 ASA51 AUA51	28	42	45	17 3/4	17 3/4	1 1/2	12 1/8	13	5 3/4	20 3/8	3 9/16	17	14 1/16	18 1/4	26 3/4	52 (53 - 3/4hp) 57 51	16	16 3/4	1	227	163
ADA5112 ASA5112 AUA5112	28	42	49	17 3/4	17 3/4	1 1/2	12 1/8	17	5 3/4	24 3/8	3 9/16	17	18 1/16	22 1/4	26 3/4	52 (53 - 3/4hp) 57 51	16	16 3/4	1	257	176
ADA71 ASA71 AUA71	34 5/8	42	48	19 3/4	19 3/4	1 1/2	11 1/8	13	5 3/4	20 3/8	3 9/16	17	14 1/16	18 1/4	29 3/4	64 67 67	20	16 3/4	1	263	193
ADA7112 ASA7112 AUA7112	34 5/8	42	52	19 3/4	19 3/4	1 1/2	11 1/8	17	5 3/4	24 3/8	3 9/16	17	18 1/16	22 1/4	29 3/4	64 67 67	20	16 3/4	1	300	213

ELECTRICAL SPECIFICATIONS

CFM§ INCHES STATIC PRESSURE

Models	HP	Speeds†	Phase	Volts†	Amps‡	0"	0.1"	0.2"	0.3"	0.4"	0.5"	0.6"
ADA/ASA 35	1/3	1 OR 2	1	115	8.3	2022	1871	1738	1607	1470	1311	1107
	1/2					2315	2178	2061	1947	1834	1714	1581
ADA/ASA/ AUA 51	1/3	1 OR 2	1	115	8.3	2873	2650	2390	2060	1806	1600	1370
	1/2					3321	3110	2910	2650	2400	2130	1940
	3/4					3788	3630	3450	3260	3020	2806	2570
ADA/ASA/ AUA 5112	1/3	1 OR 2	1	115	8.3	2750	2566	2323	1997	1629	1313	1039
	1/2					3149	2993	2803	2564	2266	1944	1648
	3/4					3606	3472	3317	3135	2918	2661	2379
ADA/ASA/ AUA 71	1/2	1 OR 2	1	115	10.9	3987	3750	3510	3270	3055	2610	2210
	3/4					4564	4350	4130	3940	3730	3580	3180
	1					5024	4820	4630	4450	4280	4100	3900
ADA/ASA/ AUA 7112	1/2	1 OR 2	1	115	10.9	3922	3685	3462	3212	2898	2471	2002
	3/4					4488	4279	4087	3888	3662	3392	3049
	1					4941	4747	4572	4394	4208	3996	3749

* All Dimensions in inches.

† Motors shipped separately.

‡ Blower motor (high speed) and pumps. Amp rating is Full-Load Amperage per National Electric Code.

§ Cubic feet per minute.