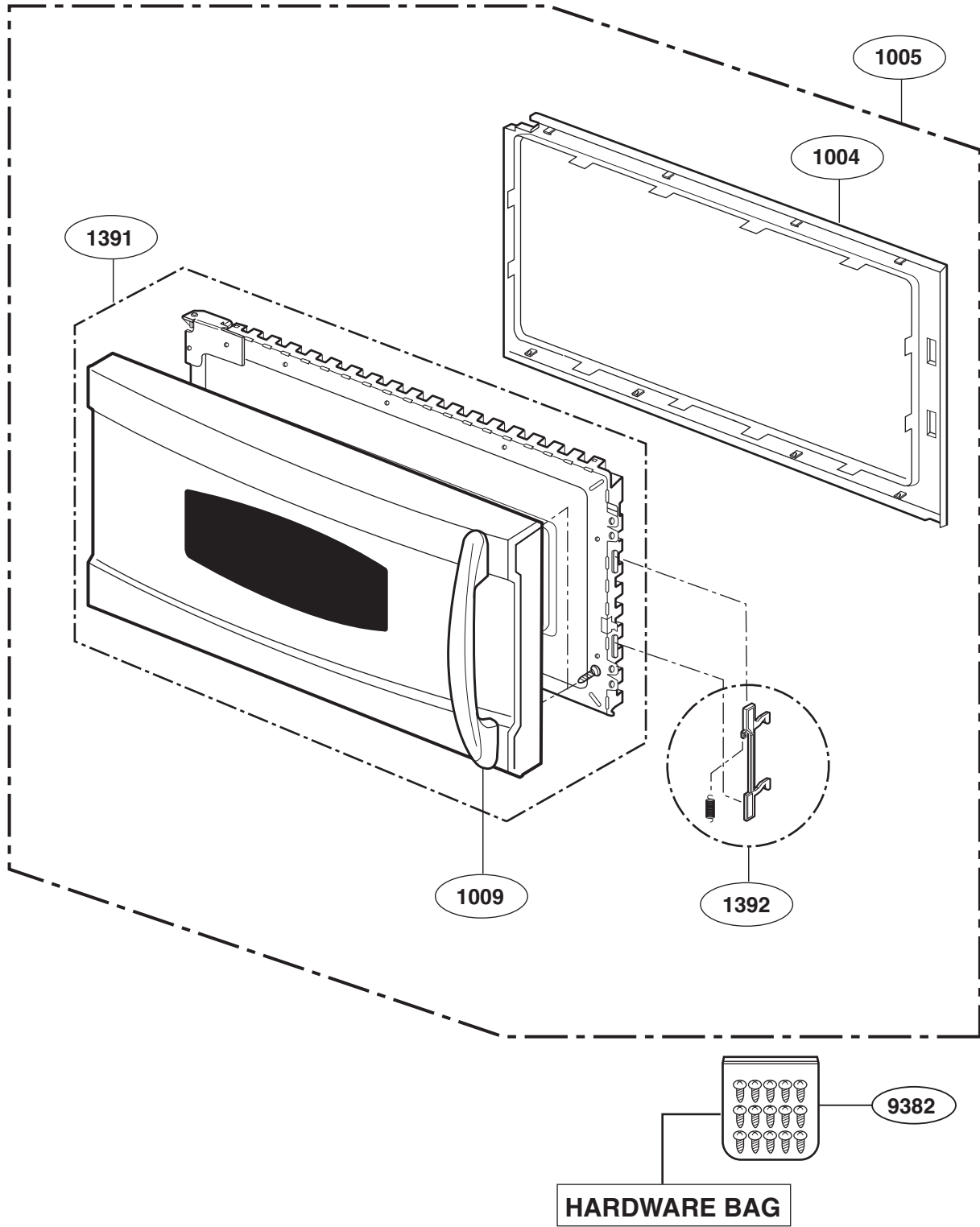


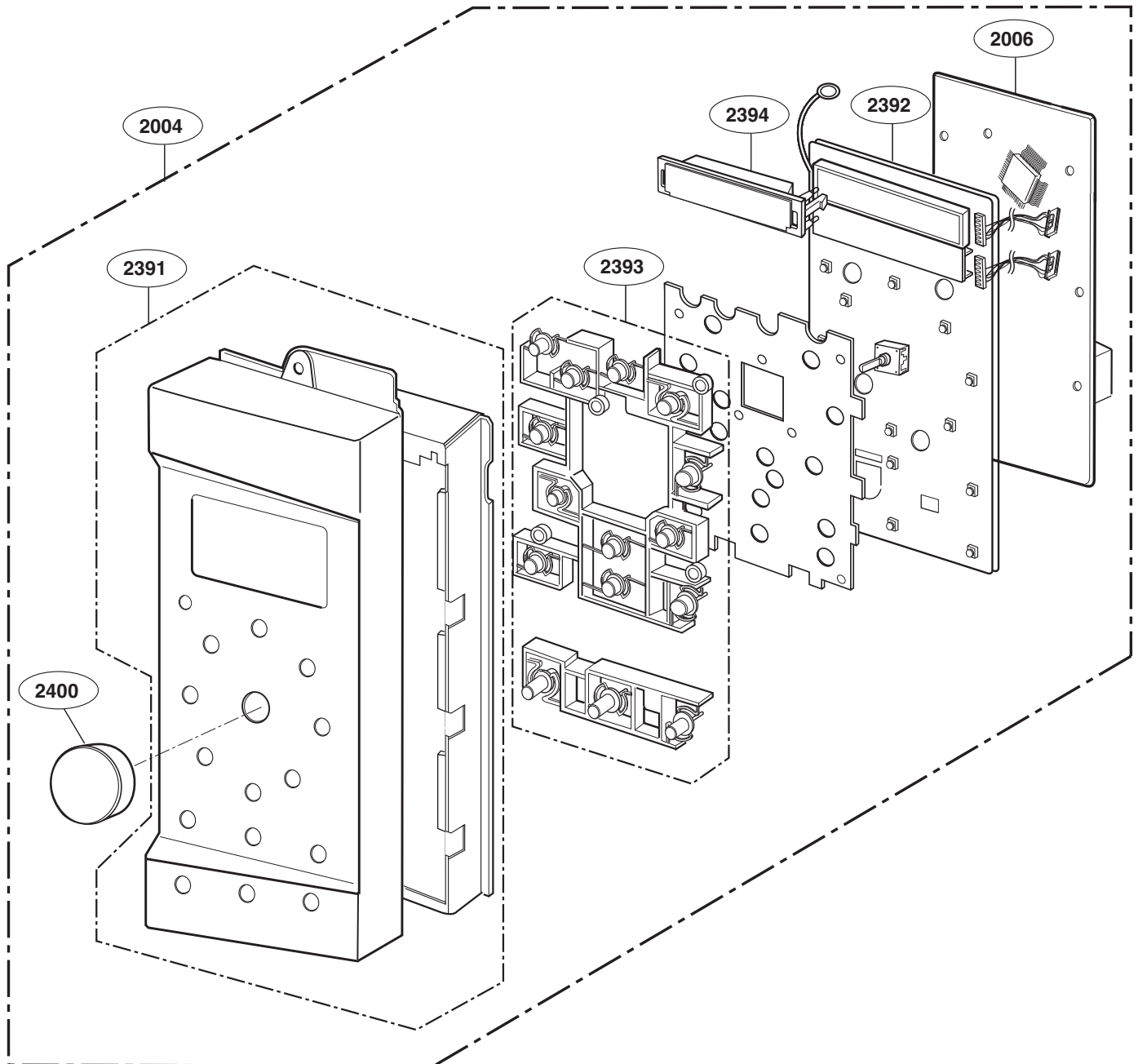
Model: SCA1000HBB  
SCA1000HWW  
SCA1000HCC  
SCA1001HSS  
SCA1001KSS

# DOOR PARTS



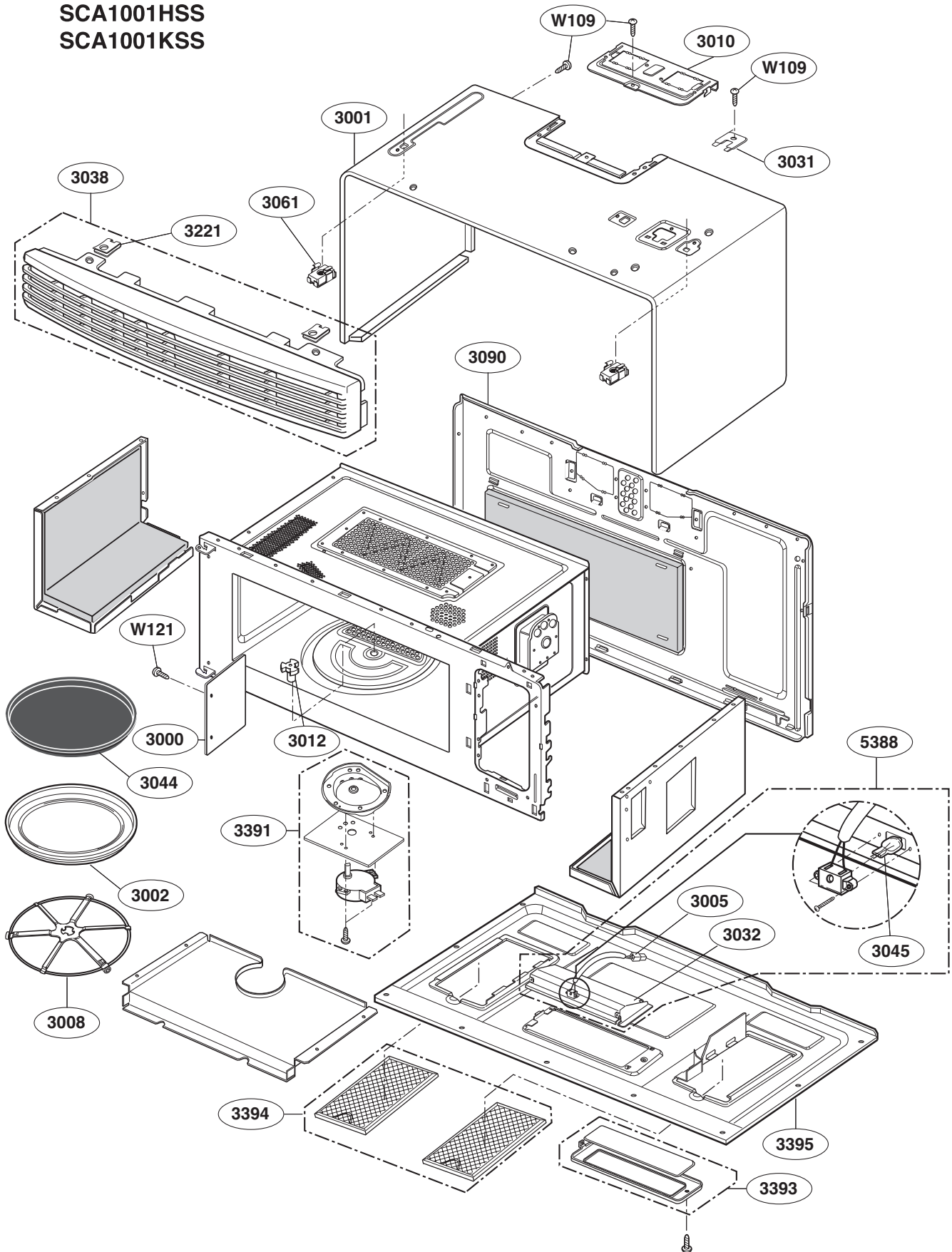
Model: SCA1000HBB  
SCA1000HWW  
SCA1000HCC  
SCA1001HSS  
SCA1001KSS

# CONTROLLER PARTS



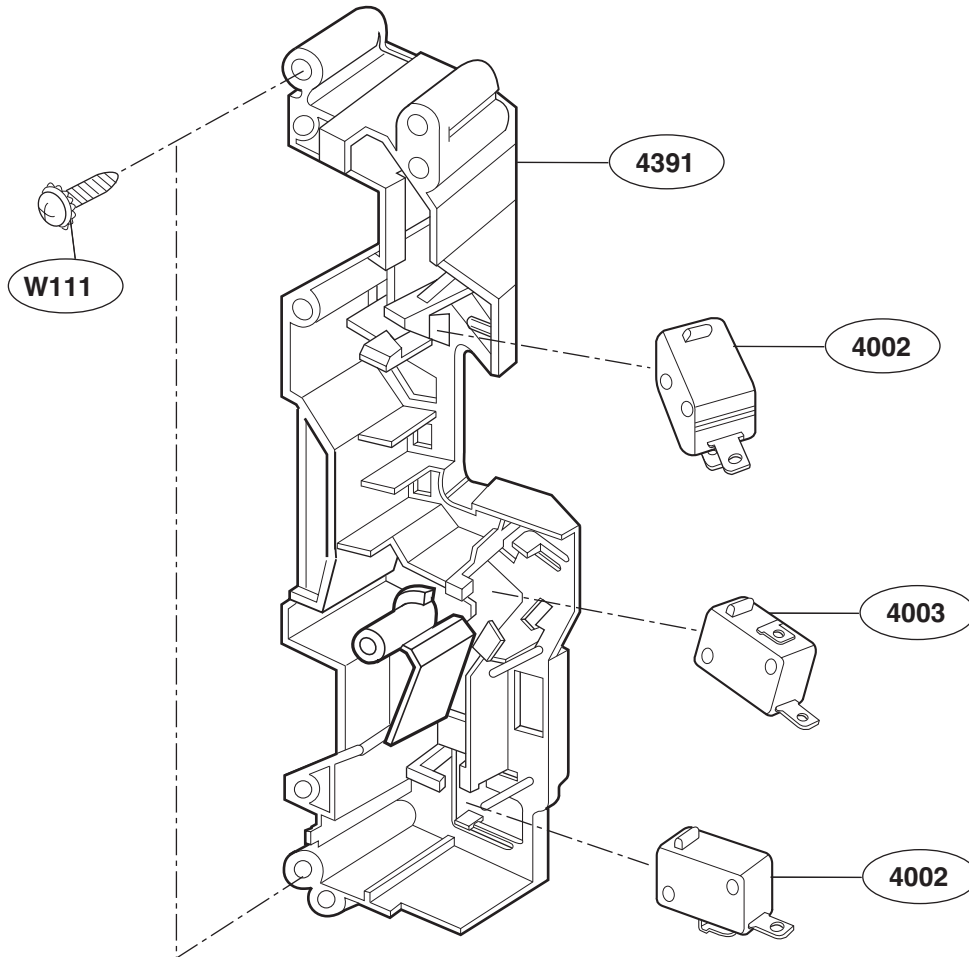
Model: SCA1000HBB  
SCA1000HWW  
SCA1000HCC  
SCA1001HSS  
SCA1001KSS

# OVEN CAVITY PARTS



Model: SCA1000HBB  
SCA1000HWW  
SCA1000HCC  
SCA1001HSS  
SCA1001KSS

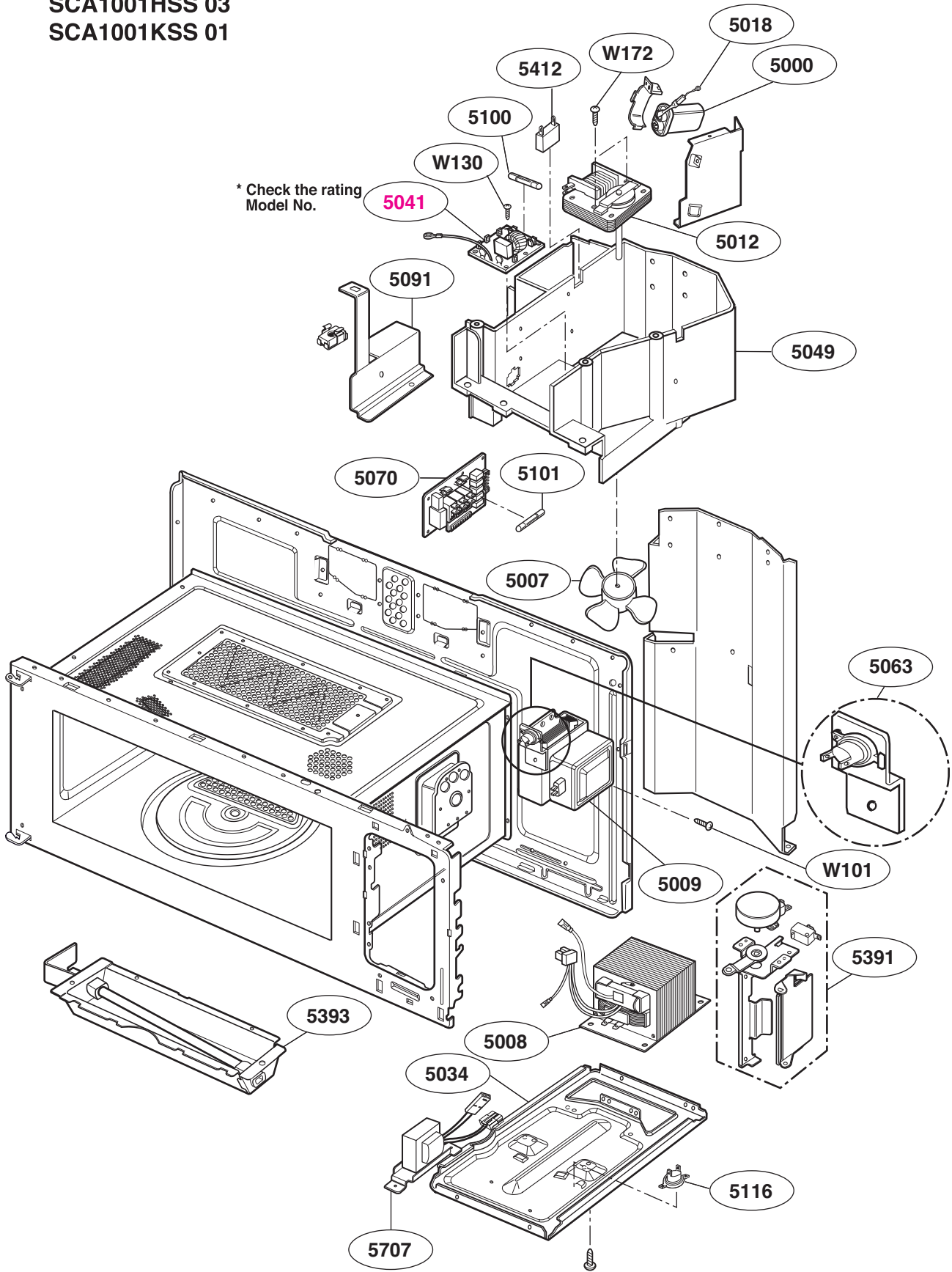
# LATCH BOARD PARTS



Model: SCA1000HBB 03  
SCA1000HCC 03  
SCA1000HWW 03  
SCA1001HSS 03  
SCA1001KSS 01

# INTERIOR PARTS (I-II)

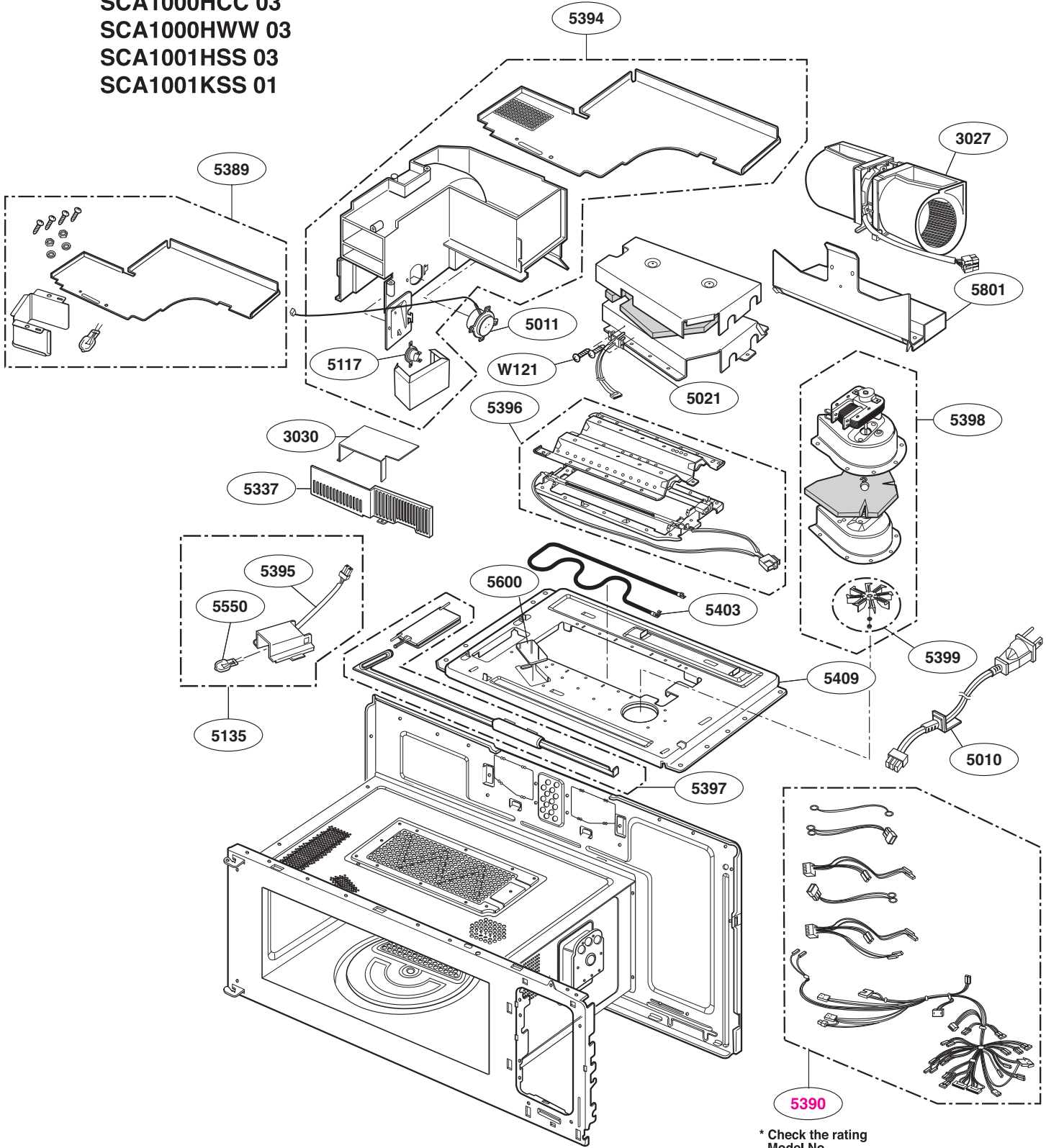
Check the rating label of Model and order SVC parts according to the Model No.



Model: SCA1000HBB 02  
SCA1000HCC 02  
SCA1000HWW 02  
SCA1001HSS 02  
SCA1000HBB 03  
SCA1000HCC 03  
SCA1000HWW 03  
SCA1001HSS 03  
SCA1001KSS 01

# INTERIOR PARTS (II - II)

Check the rating label of Model and order SVC parts according to the Model No.



\* Check the rating Model No.

Model: SCA1000HBB  
SCA1000HWW  
SCA1000HCC  
SCA1001HSS  
SCA1001KSS

# INSTALLATION PARTS

