

**automatic clothes washer  
model WWA8320V  
OPERATING INSTRUCTIONS**

**SAVE THESE INSTRUCTIONS  
WITH YOUR USE AND CARE BOOK**

Before operating your washer,  
**READ YOUR USE AND CARE BOOK.**

It contains valuable information about sorting and loading, laundry additives, stain removal and **IMPORTANT CAUTIONS FOR THE PERSONAL SAFETY OF THOSE USING THIS APPLIANCE.**

## SORT AND LOAD

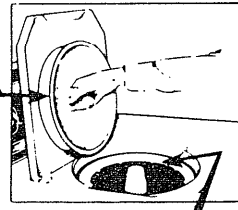
● Remove filter pan. (The underside of the lid provides a convenient resting place for the filter pan while loading or unloading clothes.)

● Add sorted laundry to wash basket. See your Use and Care Book for sorting details.

● A typical full load:

- 3 double sheets
- 4 long sleeve shirts
- 5 bath towels
- 4 standard size pillow cases

- 5 T-shirts
- 3 pair of trousers
- 7 wash cloths
- 6 handkerchiefs



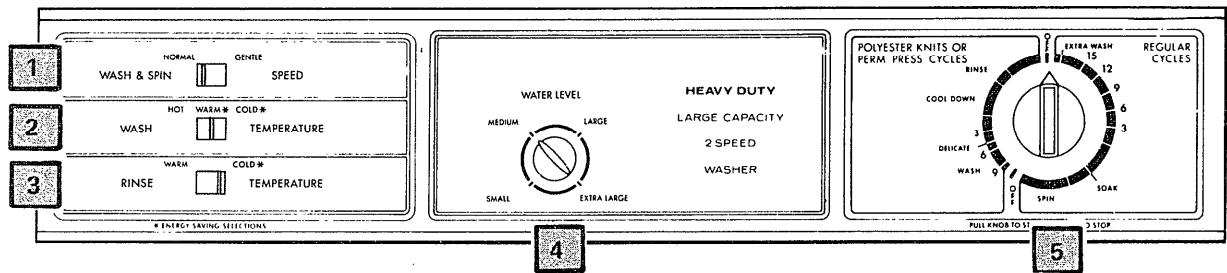
● Replace filter pan and add measured amount of detergent as recommended on detergent package. NOTE: Because of variations in contents, some granular detergents may be difficult to dissolve. If this is a problem:

- After loading the clothes, put the detergent in the wash basket next to the agitator, or,
- Use a liquid detergent.

- Clothes level should be below the clothes retaining ring.
- For use of Bleach Dispenser and Fabric Softener Dispenser, see page 2.

## SET THE CONTROLS

Refer to CONTROLS SETTING GUIDE on next page



● Close lid and set controls as follows:

**Lid must be closed for washer to operate. Washer will fill but will not agitate or spin with lid open.**

**1** Select WASH & SPIN SPEED.

**2** Select WASH TEMPERATURE.

**3** Select RINSE TEMPERATURE.

Cold rinse will be automatically provided when:

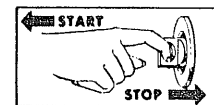
- Cold Wash is selected, OR,
  - Permanent Press Cycle is selected.
- (Cool-down spray rinse and cold-water deep rinse are provided to minimize the setting of wrinkles.)

**4** Select WATER LEVEL:

Load Size Setting	Amount of Clothes In Washer
Small	Less than 1/3 full
Medium	Between 1/3 - 1/2 full
Large	Between 1/2 - 3/4 full
Extra Large	Over 3/4 full

**5** Push Cycle Selector Knob in and turn clockwise to your selected wash cycle. See wash cycles on page 3.

● Pull Cycle Selector Knob out to start washer.



The wash cycle setting can be changed at any time. Push in the Cycle Selector to stop the washer and reset to the new position.

UC 57 49-9369

# CONTROLS SETTING GUIDE

	COTTONS & LINENS				PERMANENT PRESS		POLYESTER KNITS SYNTHETICS & BLENDS	
	Work Clothes, dungarees, etc. with heavy soil	Work clothes, dungarees, etc. with normal soil	White or Colorfast	Bright Colors	Heavy or Oily Soil	Normal or Light Soil	Heavy or Oily Soil	Normal or Light Soil
WASH & SPIN SPEED	Normal	Normal	Normal	Normal	Gentle	Gentle	Gentle	Gentle
*WASH TEMP.	Hot	Hot or Warm	Hot or Warm	Warm	Hot	Warm	Warm	Warm
RINSE TEMP.	Cold	Cold	Cold	Cold	Cold	Cold	Cold	Cold
CYCLE	Regular	Regular	Regular	Regular	POLYESTER KNITS OR PERM. PRESS			
**CYCLE SELECTOR SETTING	Extra Wash (19 Min.)	15 Min.	12 Min.	9 Min.	9 Min.	6 Min.	9 Min.	Delicate (5 Min.)

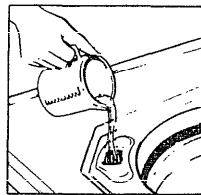
\*The cooler wash settings (not below 80°F./27°C.) will save energy. See your Use and Care Book for more complete instructions.

\*\*The wash times suggested here apply to laundering an average weight of clothes under typical home conditions. You may find that some adjustment in these times is desirable.

## HOW TO USE THE BLEACH DISPENSER

The Bleach Dispenser is designed for use with liquid bleach only! If you prefer to use powdered bleach, pour it into the filter pan, NOT into the bleach dispenser.

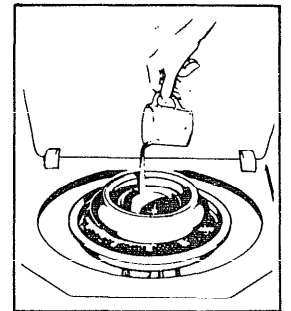
- Do NOT overflow — Avoid splashing. Undiluted bleach will cause fabric damage.
- Pour measured amount of liquid bleach directly into the BLEACH DISPENSER.
- Maximum recommended amount of liquid bleach . . .
  - Full wash: 1 1/4 cup (310 ml) liquid
  - Small wash: 2/3 cup (170 ml) liquid



NEVER POUR LIQUID BLEACH DIRECTLY ONTO CLOTHES

## HOW TO USE THE FABRIC SOFTENER DISPENSER

- Position Fabric Softener Dispenser on filter-pan.
- Pour the manufacturer's recommended amount of fabric softener into a standard measuring cup.
- Add enough water to fill the cup 1/2 full.
- Pour the diluted softener into the dispenser.
- The fabric softener will automatically be dispensed at the proper time.



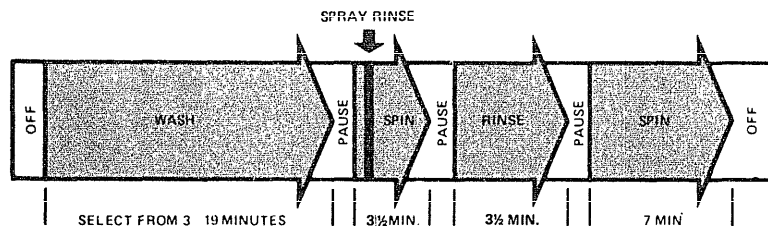
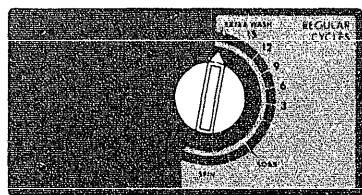
Stopping the washer during the first spin period will cause the dispenser to empty too soon.

# WHAT HAPPENS IN EACH CYCLE

All times are approximate.

## REGULAR CYCLES

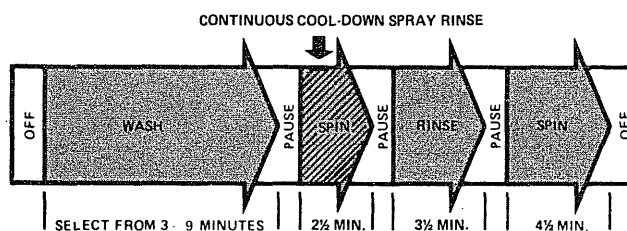
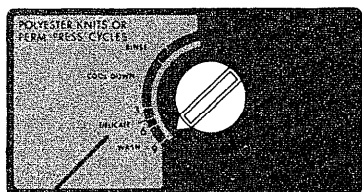
Provides longer washing time for most cottons, linens, work and play clothes.



- **TOTAL CYCLE TIME:** Varies from 19 to 35 minutes plus fill time depending on selected wash time.

## POLYESTER KNITS OR PERM PRESS CYCLES

For Polyester Knits, delicates and Permanent Press. Cool-down spray rinse and cold-water deep rinse to minimize the setting of wrinkles.

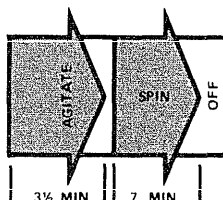
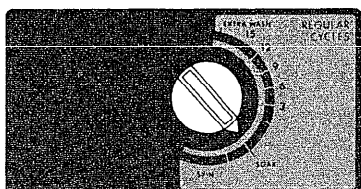


- **DELICATE setting (5 min. wash time)**  
For delicates, sheers and some knits where a shorter wash time is desired.

- **TOTAL CYCLE TIME:** Varies from 16 to 22 minutes plus fill time depending on selected wash time.

## SOAK CYCLE

May be used with most soaking aids to loosen deeply embedded soils or stains.



- **TOTAL CYCLE TIME:** 11 minutes plus fill time.

- Set RINSE TEMP switch to desired soak temperature. NOTE: COLD WASH selection will automatically provide a COLD SOAK. If a WARM SOAK is desired, set both WASH TEMP and RINSE TEMP switches to "WARM".
- If a HOT SOAK is desired, set WASH TEMP switch to "HOT" and turn dial pointer to "EXTRA WASH". After washer fills and begins to agitate, push in Cycle Selector knob and turn to "SOAK". Pull out Cycle Selector knob to complete the cycle.

### For an EXTENDED SOAK

- Allow washer to fill and agitate for a few minutes to dissolve soaking agent, then —
- Push in Cycle Selector knob to stop washer and allow to soak for as long as desired.
- After desired soak period, pull out Cycle Selector knob to complete the cycle.

**BEFORE YOU CALL FOR SERVICE . . .** Check the **TROUBLE SHOOTING GUIDE** on the back cover of your **USE AND CARE BOOK**. It lists many minor causes of operating problems that you can correct yourself and may save you an unnecessary service call.

Product improvement is a continuing endeavor at General Electric. Therefore, specifications are subject to change without notice. A General Electric Warranty applies to this product.



GENERAL ELECTRIC COMPANY  
LOUISVILLE, KENTUCKY 40225

GENERAL  ELECTRIC

Part No. 141A7449P359

10-79

WWA8320V

Pub. No. 49-9369