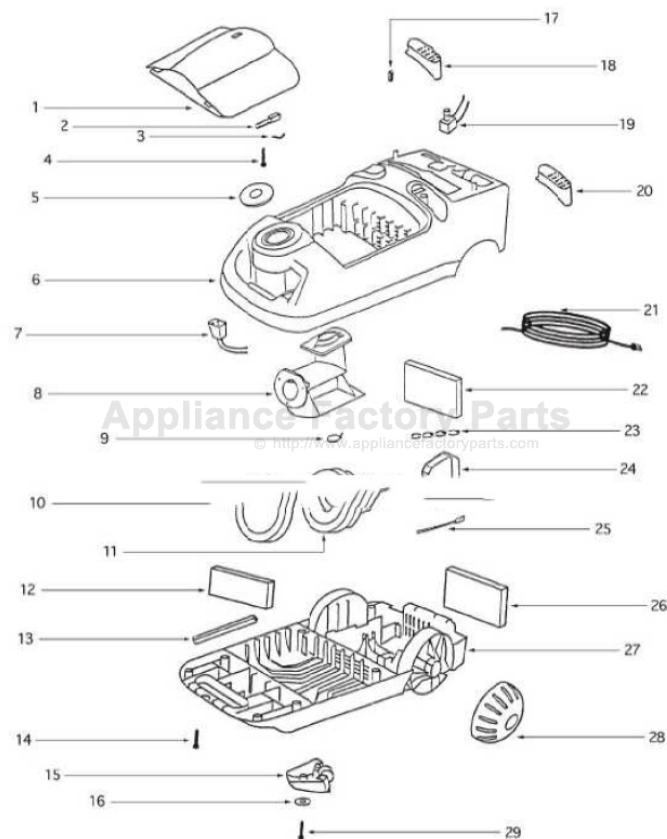


This Owner's Manual is provided and hosted by [Appliance Factory Parts](http://www.appliancefactoryparts.com).



# Eureka 6873A Owner's Manual

[Shop genuine replacement parts for Eureka 6873A](#)



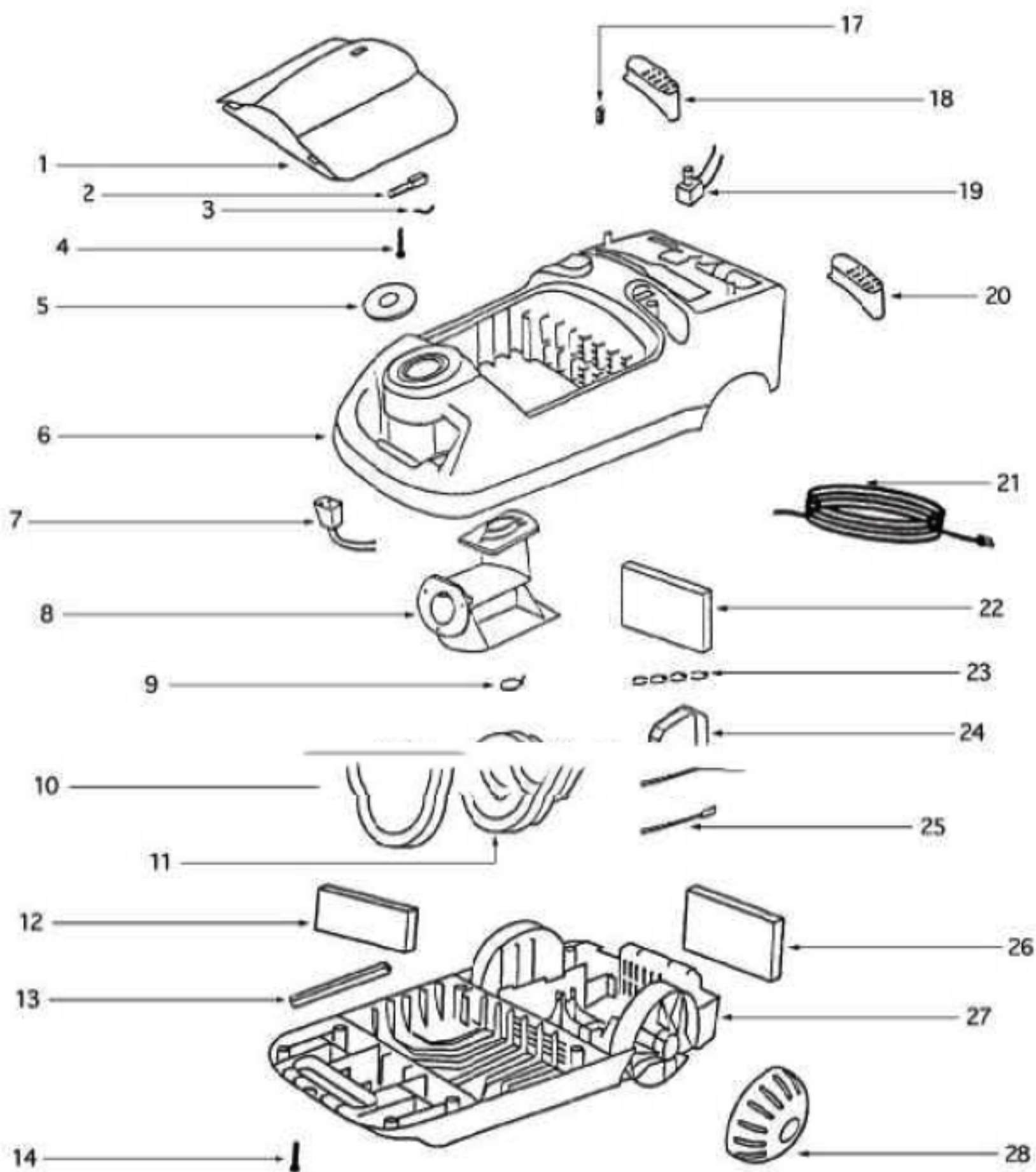
[Find Your Eureka Vacuum Cleaner Parts - Select From 855 Models](#)

----- Manual continues below part list -----

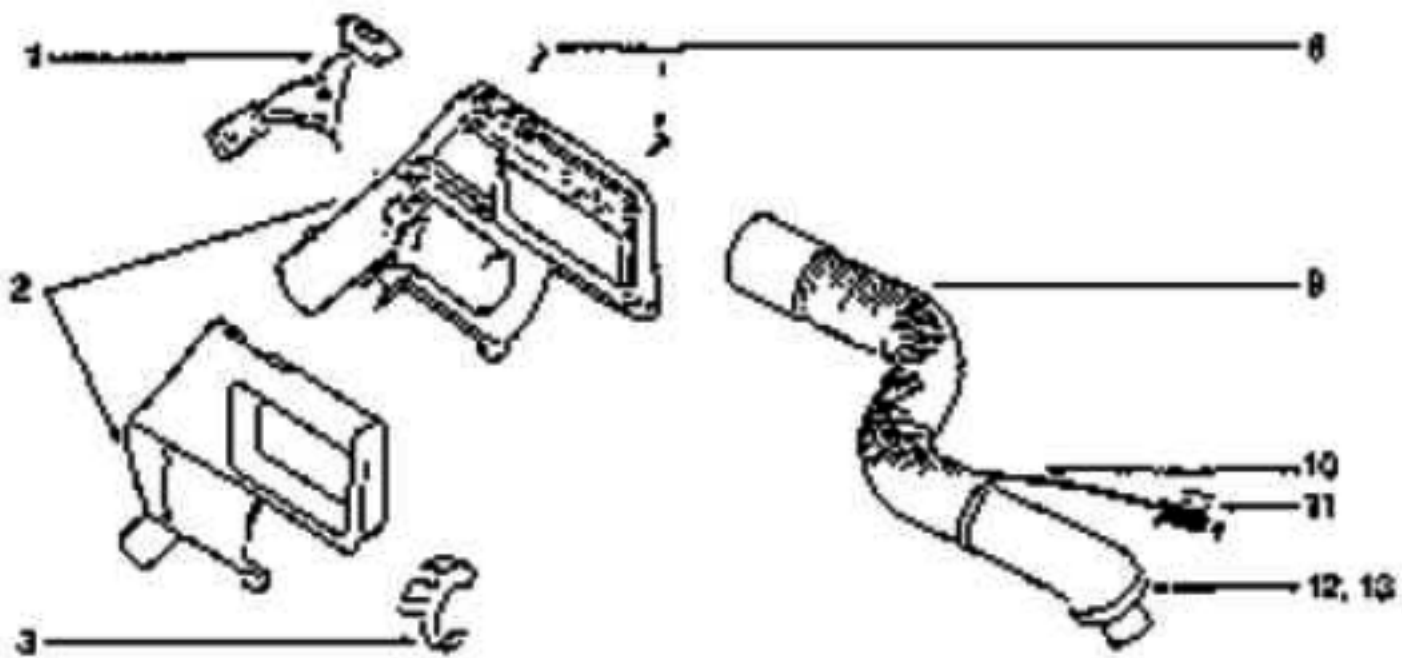
## Available Replacement Parts for Eureka 6873A

<a href="#">E-37657</a>	FILTER, CANISTER, 1PK
<a href="#">ER-2017</a>	BRUSH ROLLER ROLL 54325-1
<a href="#">155506</a>	MOTOR

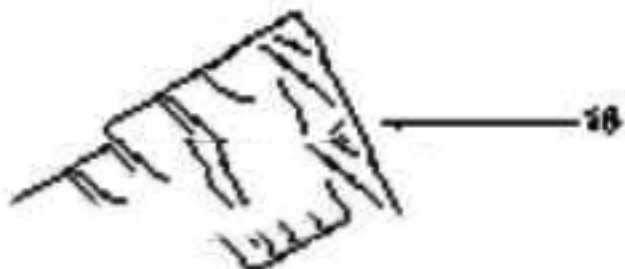
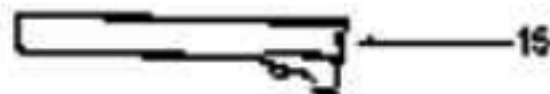
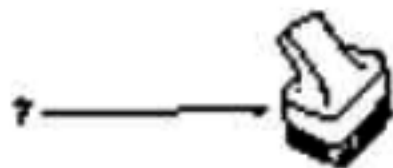
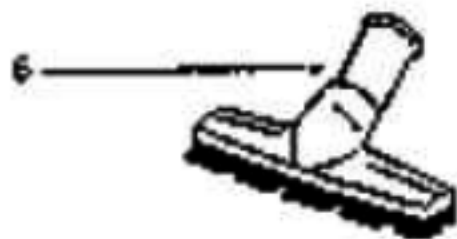
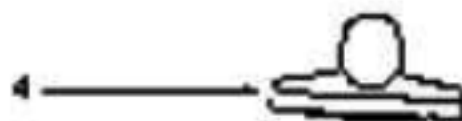
CANISTER - 6873A



Ref #	Part	Description	Comments	Qty
1	54635-17	BAG COVER & GRAPHICS - PK		
2	37761A-1	BAG INDICATOR ASSEMBLY		
3	56750-1	CLIP - BAG INDICATOR		
4	53238-1	SCREW PACKAGE		
5	27380B-119N	SEAL - SWIVEL HOSE		
6	60869-11	UPPER SHELL ASSY - PACKAG		
8	14905A-119N	PLATE - HOSE		
9	46713-5	TIE - CABLE		
10	28032	GASKET - MOTOR MOUNTING		
11	60261-8	MOTOR ASSEMBLY - PACKAGED		
12	37710-1	FILTER - EXHAUST		
13	56326-1	TUBE - WIRE		
14	53197-1	SCREW PACKAGE		
15	37403-1	CASTER		
17	55794	SPRING		
18	27363-119NSV	BUTTON		
19	36341-2	SWITCH - PUSH	Switch nut not illustrated, 55446	
20	27363-119NSV	BUTTON		
21	35771-20	SUPPLY CORD ASSEMBLY		
22	37657	FILTER - MOTOR		
23	60192-1	WIRE SPLICE 5 - PKG OF 5		
24	55463	GASKET - MOTOR STACK		
25	59717	THERMOSTAT & TERMINAL ASS	Wire & terminal assy, 57691-1, 57691-2, 57691-3 not illustrated.	
26	37966	SOUND FOAM		
27	61117-1	LOWER SHELL ASSEMBLY - PK	Includes items 15, 16 & 28	
28	27366-1	WHEEL - REAR		
4	27366-1	WHEEL - REAR		
29	53238-8	SCREW PACKAGE	pkg of 10	
7	26730-8	CONNECTOR & WIRE ASSEMBLY		
16	56376	WASHER		
	14656-22	CORD REEL ASSEMBLY	Not illustrated	



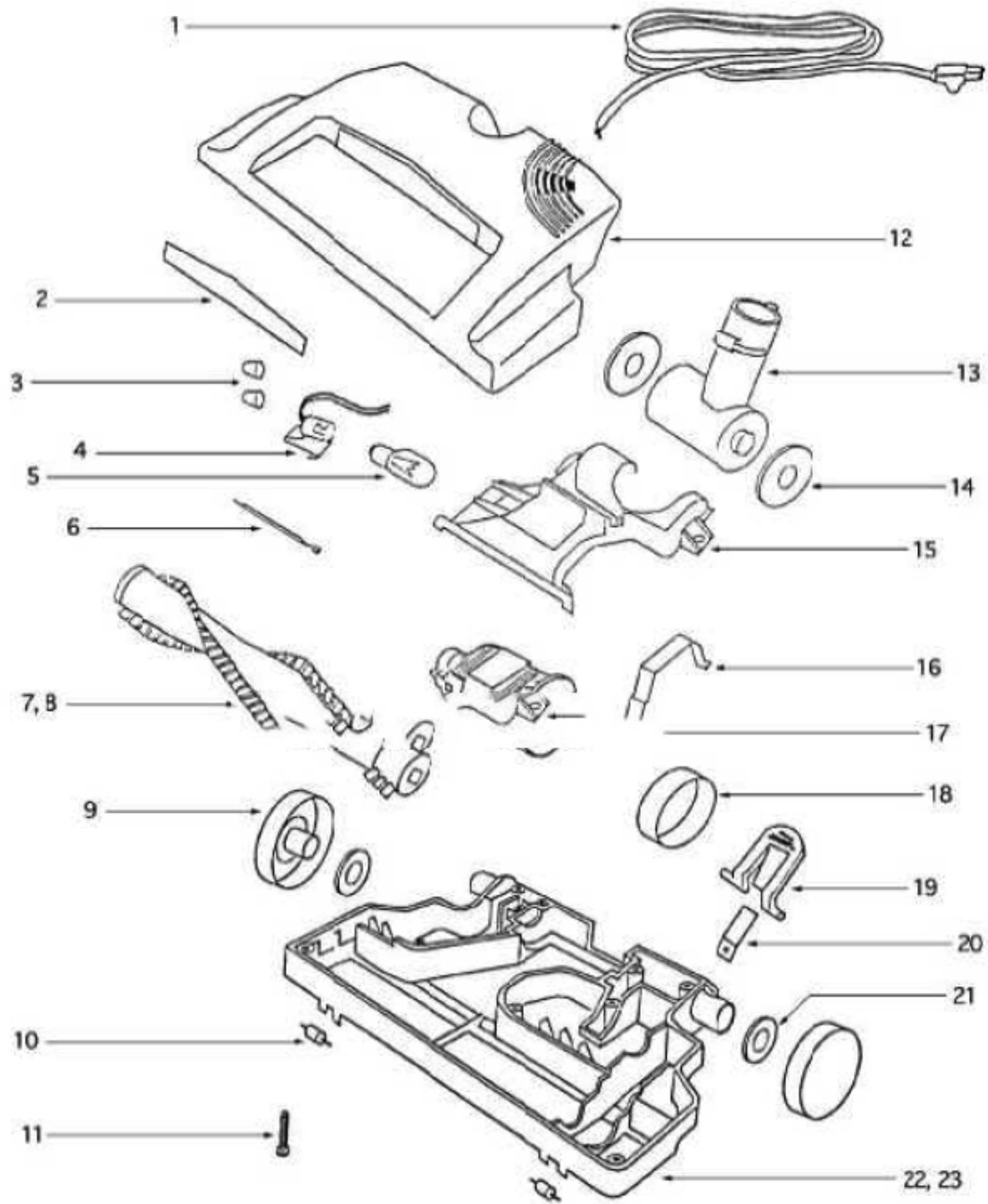
NOT ILLUSTRATED  
25986-5 CORD CHANNEL



9. 60791-2 HOSE ASSY COMPLETE  
 38346-2 SWITCH & CONNECTOR ASSY  
 60852-1 HANDLE ASSY-2 WIRE  
 38914-308N BLEEDER  
 38358-2 CORD ASSY  
 38368-1 PLUG CLIP  
 54655-2 HOSE CONNECTOR ASSY  
 38357-1 CONNECTOR RING

Ref #	Part	Description	Comments	Qty
1	38346-2	SWITCH & CONNECTOR ASSEMB		
4	38284-3	UPHOLSTERY NOZZLE ASSEMBL		
5	26708-119N	TOOL - CREVICE		
6	28303-1	FLOOR & WALL BRUSH ASSEMB		
7	54505-3	DUSTING BRUSH - PACKAGED		
8	53257-1	SCREWS - PACKAGE 10		
9	60791-2	HOSE ASSEMBLY - CARTONED	includes items 1,2,3,10,11,12 & 13	
11	38368-1	CLIP - PLUG		
10	38358-2	CORD & PLUG ASSY		
14	39040A-2	STRAIGHT WAND ASSEMBLY		
15	37738-7	UPPER WAND ASSEMBLY		
16	57698	PAPER BAG - STYLE V FA	pkg of 3	
17	70227	OWNERS GUIDE		
2	60852-1	HANDLE ASSEMBLY - PACKAGE		
3	38914-308N	COVER - BLEEDER		
12	54655-2	CONNECTOR ASSY - HOSE (CR		
13	38357-1	RING - CONNECTOR		

BASE HOOD - 6873A



Ref #	Part	Description	Comments	Qty
1	37753-3	CORD & PLUG ASSEMBLY		
2	27397-1	LENS - HOOD		
3	60192-1	WIRE SPLICE 5	pkg of 5	
6	57421-2	WIRE & TERMINAL ASSEMBLY		
7	60279-1	DISTURBULATOR ASSY - CTND	includes item 8	
8	27759A-119N	CAP - DISTURBULATOR		
9	37434-2	WHEEL - REAR		
11	53238-8	SCREW PACKAGE	pkg of 10	
12	60870-4	POWERHEAD HOOD/BASE KIT		
13	38379-2	HANDLE SOCKET ASSEMBLY		
15	27398-1	AIR DUCT COVER ASSEMBLY		
16	38377	STRAP - MOTOR		
17	54343-1	MOTOR ASSEMBLY - PACKAGED		
18	58065A	BELT - STYLE AR		
19	14940-1	PEDAL - FOOT		
20			Not on this model.	
22	60870-4	POWERHEAD HOOD/BASE KIT	includes items 9, 10, 14, 21 & 23	
13	54639-2	POWERHEAD HOOD/BASE KIT		
10	56995-1	WHEEL & AXLE PACKAGE - FR	pkg of 2	
14	57993	GASKET - FELT		
21	56180	FELT WASHER		
	54575-32	POWER HEAD ASSEMBLY - CAR	Complete	
4	38484-1	HEADLIGHT SOCKET ASSEMBLY		
5	59045	HEADLIGHT		
23	38063	GUARD - BELT		