



Direct Vent Fireplace Systems

MAJESTIC 

## Direct Vent Fireplace Systems

### CDV SERIES

Installing a direct vent fireplace from Majestic is a great way to include elegance and warmth in just about any room in your home. Available in four sizes, the CDV direct vent fireplaces offer up to 795 square inches of viewing area and a range of BTU's from 18,000 to 24,000. With a dedicated top or rear vent design and a number of optional accessories, our CDV fireplaces are the perfect choice for anywhere a warm gathering spot is required.

500DVBL direct vent fireplace system shown on cover



CDVR36 direct vent fireplace system

Give people a place to gather – make fire the focal point of your room again with the Direct Vent series of fireplaces from Majestic.



CDVR42 direct vent fireplace system



500DVB with Brushed Pewter arched front, black door frame and black fire screen doors



400DVB with black texture Manor surround, rectangular front and Federal doors

## Direct Vent Fireplace Systems

### DVB SERIES

Not only does a fireplace make a beautiful addition to your home, but a direct vent fireplace from Majestic is an excellent way to heat rooms that seem to remain cold and damp without heating up your entire house. The DVB series of fireplaces offers a classic fireplace design in a range of sizes. Enjoy the flickering flames with viewing areas from 486 to 795 square inches and the warmth of BTU's ranging from 15,000 right up to 26,000. Operating your DVB fireplace is simple with our Signature Command™ System, standard on all DVB models. All DVB fireplaces come with standard black louvers but choose from a range of optional accessories and finishes to give your Majestic DVB direct vent fireplace a custom look that fits seamlessly into your décor.

## Signature Command

### FIRE, AND MORE, AT YOUR FINGERTIPS!

No other system offers so many available features as the Signature Command™ System, standard on all direct vent fireplace models. From the optional Touch Screen remote control you can light the pilot and control three step flame adjustment, or just let the Smart Mode Thermostat take command and automatically modulate your fireplace to its most comfortable and efficient operation. Enjoy the electronic ignition functionality with automatic battery back-up system all without getting up from your couch. Add on the optional A/C accessory module and even more features are at your fingertips. Adjust the blower speed, and add up to two additional appliances to the 120 volt auxiliary ports. This allows you to control ceiling fans, waterfalls, room lights, or any appliances you choose, from the same remote control.



## Direct Vent Fireplace Systems

### SOLITAIRE SERIES (DVBL)

As seen on the front cover, the Solitaire DVBL direct vent fireplace system from Majestic offers a contemporary clean-face design with no louvers – providing an expansive viewing area. Available with traditional logs and black porcelain liner, a variety of firebrick options, or with our stone and glass or glass burner, the Solitaire is the perfect addition to any modern room. Standard Signature Command™ System provides one of a kind electronic ignition with battery backup (meaning you can operate your fireplace even in a power outage) and no standing pilot using gas when your fireplace is off. The Solitaire from Majestic is an energy efficient choice as well as a beautiful one.



300DVBL shown with Olde English firebrick



300DVBL direct vent fireplace system with stone and glass burner kit



Stone and glass burner kit



Glass burner kit



Logs shown with black porcelain liner



400DVBL shown with stone surround



500DVBL direct vent fireplace system



400DVBH direct vent fireplace system

## Direct Vent Fireplace Systems

### DVBH SERIES

The classic beauty and style of the DVBH from Majestic is outdone only by its radiant warmth. Standard ceramic glass ensures not only a clear view of the dancing flames, but also even, radiant heat that will keep your home cozy. With a wide variety of options, including Tavern Brown or Cottage Red firebrick and brass, pewter or black trim and louver colors, the DVBH offers flexibility and a custom look that will suit any décor. Available in two sizes with deluxe illustrated control panel, the DVBH from Majestic is as easy to operate as it is to look at. With an 85% CSA efficiency rating and a Limited Lifetime Warranty, the DVBH from Majestic makes it an ideal heat source.



STDVD See-Thru direct vent fireplace system

## Direct Vent Fireplace Systems

### DESIGNER SERIES

In today's contemporary homes, fireplaces are showing up in all sorts of exciting places such as bathrooms, bedrooms and even as room dividers! Our direct vent Designer Series from Majestic gives you exciting décor options and interesting design applications with Peninsula, See-Thru and Left or Right Corner styles. Plus, with standard Tavern Brown firebrick, louver options and up to 36,000 BTU's, form and function work together to give you an exceptional fireplace performance.



CRDVD Corner direct vent fireplace system



PFDVD Peninsula direct vent fireplace system

## STANDARD FEATURES:

- Glowing ceramic fiber logs featuring a patented Natural Flame aluminized pan burner with random dancing flames and large ember bed
- Signature Command™ control in natural or propane gas
- Natural or propane field convertible
- Flexible connector with On/Off valve included
- Includes 15' of preinstalled switch wire with wall switch and cover
- Junction box included for electrical hook up
- Refer to specification sheets for appropriate venting components



Deluxe control panel available on DVB and DVBH models

## CDV:

- Removable unitized black louver assembly for ease of installation
- Available in dedicated rear or top vent units
- Available in four sizes: 33", 36", 42", 47"

## DVB:

- Removable unitized black louver assembly for ease of installation
- Consumer friendly deluxe control panel with easy lift off access for blower installation
- Patented field convertible vent technology for venting horizontally or vertically
- Available in four sizes 33", 36", 42", 47"
- Firebrick and faces available

## DVBL:

- Contemporary clean face design for full glass appearance
- Available in dedicated top vent units only
- Three sizes to fit your décor: 33", 36" & 42"

## DVBH:

- Available 33" & 36" (rear/top convertible) with ceramic glass
- Field convertible vent technology to vent horizontally or vertically, and from natural to propane gas
- Removable unitized louver system for top and bottom
- Illustrated consumer-friendly deluxe control panel with easy lift off capabilities
- Ember bed burner with fiber ceramic logs and andirons
- AFUE rated and P4 listed
- Variable Hi/Lo flame control

## DESIGNER FIREPLACES:

- Full size 36" hearth opening with large viewing area
- Patented field convertible vent technology for venting horizontally or vertically
- Available in four distinctive styles: See-Thru, Peninsula, Left and Right Corner units
- Standard Tavern Brown firebrick

## Optional Accessories

	CDV	DVB	DVBL	DVBH	DESIGNER
Curved trim kits (Brass, Pewter, Black)	X	X		X	
Medium trim kits (Brass, Pewter, Black)	X	X		X	See thru only
Louvers (Brass, Pewter)	X	X		X	Peninsula and corners only
Tavern Brown firebrick	X	X	X	X	
Cottage Red firebrick		X	X	X	
Olde English firebrick			X		
Andirons		standard	X		
BLOT, BLOTSC* or FK12 blower	X	X		X	X
BLOTBLDV or BLOTDVSC* blower			X		
Mesh glass cover	X	X	X	X	
Classic faces	X	X			See thru only
Manor faces	X	X			
Mantels and cabinets	X	X			Peninsula only
Stone Surround			X		
Contemporary kits (black porcelain liner, glass and rock, glass only)			X		
Ambient Technologies remote controls	X	X	X	X	X
Light Kit			X		

\*Blowers ending in SC are for use with Signature Command System units and require the purchase of SCACM accessory module & TSFSC remote



BLOT, BLOTSC or FK12 blower variable forced air blower (160 cfm)



BLOTDVBL or BLOTDVBLSC variable thermostat controlled dual forced air blower (160 cfm)



Andirons for DVBL



Medium Pewter trim Medium Brass trim Medium Black trim

Glass Kits for DVBL



Sapphire



Bronze



Onyx



Emerald



Diamond



See our Ambient Technologies® catalog for a complete line of remotes and thermostats.

Louver Options

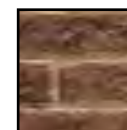


Pewter Louvers



Brass Louvers

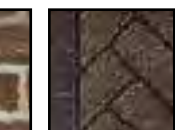
Firebrick Options



Tavern Brown firebrick



Cottage Red firebrick



Olde English firebrick

## Direct Vent Fireplace Systems

Model	CDVR33	CDVT33	CDVR36	CDVT36
BTU / HR	13,000 - 18,000 NG / 13,000 - 18,000 LP	13,000 - 18,000 NG / 13,000 - 18,000 LP	15,000 - 20,000 NG / 15,000 - 20,000 LP	15,000 - 20,000 NG / 15,000 - 20,000 LP
FE Ratings (Cdn. Fireplace Efficiency)	57.6% NG / 64.3% LP	47.6% NG / 55.4% LP	49.7% NG / 56.1% LP	47.6% NG / 55.4% LP
Thermal Efficiency	Up to 80%	Up to 80%	Up to 80%	Up to 80%
Dimensions (Framing)	33 5/8"W x 32 1/4"H x 11 3/4"D	33 1/4"W x 35 7/8"H x 13 3/4"D	37 1/2"W x 39"H x 15 1/4"D	37 1/2"W x 39"H x 15 1/4"D
Viewing Area	15 3/16"H x 27 3/16"W (440sq.in.)	15 3/16"H x 27 3/16"W (440sq.in.)	20 3/8"H x 29"W (591sq.in.)	20 3/8"H x 29"W (591sq.in.)
Blower	Optional	Optional	Optional	Optional
Model	CDVR42	CDVT42	CDVR47	CDVT47
BTU / HR	17,000 - 24,000 NG / 18,000 - 24,000 LP	17,000 - 24,000 NG / 18,000 - 24,000 LP	17,000 - 24,000 NG / 18,000 - 24,000 LP	17,000 - 24,000 NG / 18,000 - 24,000 LP
FE Ratings (Cdn. Fireplace Efficiency)	71% NG / 72.3% LP	59.1% NG / 67.6% LP	69.6% NG / 70.6% LP	56.6% NG / 65.7% LP
Thermal Efficiency	Up to 80%	Up to 80%	Up to 80%	Up to 80%
Dimensions (Framing)	41 1/4"W x 39"H x 15 1/4" D	41 1/4"W x 39"H x 15 1/4" D	47 1/4"W x 39"H x 15 1/4" D	47 1/4"W x 39"H x 15 1/4" D
Viewing Area	20 3/8" H x 33 1/16"W (674sq.in.)	20 3/8" H x 33 1/16"W (674sq.in.)	20 3/8" H x 39 1/16"W (796sq.in.)	20 3/8" H x 39 1/16"W (796sq.in.)
Blower	Optional	Optional	Optional	Optional
Model	300DVB	400DVB	500DVB	600DVB
BTU / HR	15,000 - 21,000 NG / 15,000 - 21,000 LP	17,000 - 24,000 NG / 17,000 - 24,000 LP	20,000 - 26,000 NG / 20,000 - 26,000 LP	20,000 - 26,000 NG / 20,000 - 26,000 LP
FE Ratings (Cdn. Fireplace Efficiency)	61.8% NG / 55.7% LP	61.1% NG / 60.7% LP	61.3% NG / 60.8% LP	60.9% NG / 60.5% LP
Thermal Efficiency	Up to 80%	Up to 80%	Up to 80%	Up to 80%
Dimensions (Framing)	33 1/2"W x 38"H x 14"D	37 1/2"W x 41 5/8"H x 16"D	41 1/2"W x 41 5/8"H x 16"D	47 1/2"W x 41 5/8"H x 16"D
Viewing Area	18"H x 27"W (486sq.in.)	20 3/8"H x 29"W (591sq.in.)	20 3/8"H x 33"W (672sq.in.)	20 3/8"H x 39"W (795sq.in.)
Blower	Optional	Optional	Optional	Optional
Model	300DVBL	400DVBL	500DVBL	300DVBH
BTU / HR	15,000 - 22,000 NG / 17,000 - 22,000 LP	19,000 - 26,000 NG / 21,000 - 26,000 LP	20,000 - 28,000 NG / 22,000 - 27,000 LP	16,000 - 23,000 NG / 18,000 - 23,000 LP
FE Ratings (Cdn. Fireplace Efficiency)	60.2% NG / 64.2% LP	68.1% NG / 62.8% LP	64.1% NG / 67.9% LP	67.4% NG / 75.7% LP
Afue Efficiency	N/A	N/A	N/A	Up to 65%
Thermal Efficiency	Up to 80%	Up to 80%	Up to 80%	Up to 85%
Dimensions (Framing)	34 7/8"W x 38 7/8"H x 15 7/8"D	37 7/16"W x 41 3/4"H x 17 1/16"D	41 7/16"W x 41 3/4"H x 17 1/16"D	33 1/2"W x 38"H x 13 3/4"D
Viewing Area	22 1/4"H x 27"W (600 3/4sq.in.)	26"H x 29"W (754sq.in.)	26"H x 33"W (858sq.in.)	18"H x 27"W (486sq.in.)
Blower	Optional	Optional	Optional	Optional
Model	400DVBH	STDVD	PFDVD	C(R)/(L)DVD
BTU / HR	19,000-27,000 NG / 20,000-26,000 LP	25,000 - 36,000 NG / 26,000 - 36,000 LP	25,000 - 36,000 NG / 26,000 - 36,000 LP	25,000 - 36,000 NG / 26,000 - 36,000 LP
FE Ratings (Cdn. Fireplace Efficiency)	70.9 NG / 74 LP	65.1% NG / 73.4% LP	65.1% NG / 73.4% LP	65.1% NG / 73.4% LP
Afue Efficiency	Up to 66%			
Thermal Efficiency	UP TO 85%	Up to 80%	Up to 80%	Up to 80%
Dimensions (Framing)	37 1/2"W x 41 5/8"H x 16 1/2"D	44 1/4"W x 41 1/8"H x 22 3/4"D	43 1/2"W x 41 1/8"H x 22 3/4"D	43 1/2"W x 41 1/8"H x 24"D
Viewing Area	20 3/8"H x 29"W (591sq.in.)	19 1/2"H x 32 1/4"W (629sq.in.)	19 1/2"H x 32 1/4"W (629sq.in.)	19 1/2"H x 32 1/4"W (629sq.in.)
Blower	Optional	Optional	Optional	Optional

For more information about MHSC and Majestic efficient and environmentally friendly products, please visit [www.majesticproducts.com](http://www.majesticproducts.com)



# MAJESTIC

A Brand of Monessen Hearth Systems Co.  
149 Cleveland Drive, Paris, Kentucky 40361  
[www.majesticproducts.com](http://www.majesticproducts.com)

Your Majestic Dealer:

To avoid personal injury or property damage, the product described by this brochure must be installed, operated and maintained in strict compliance with the instructions packaged with the product and all applicable building or fire codes. Contact local building or fire officials about restrictions and installation inspection requirements. All photographs and drawings on this brochure are for illustrative purposes only and are not intended for, nor should they be used as a substitute for the instructions packaged with the unit. Appearance and specifications of the product are subject to change without notice. © 2010 Monessen Hearth Systems Co.