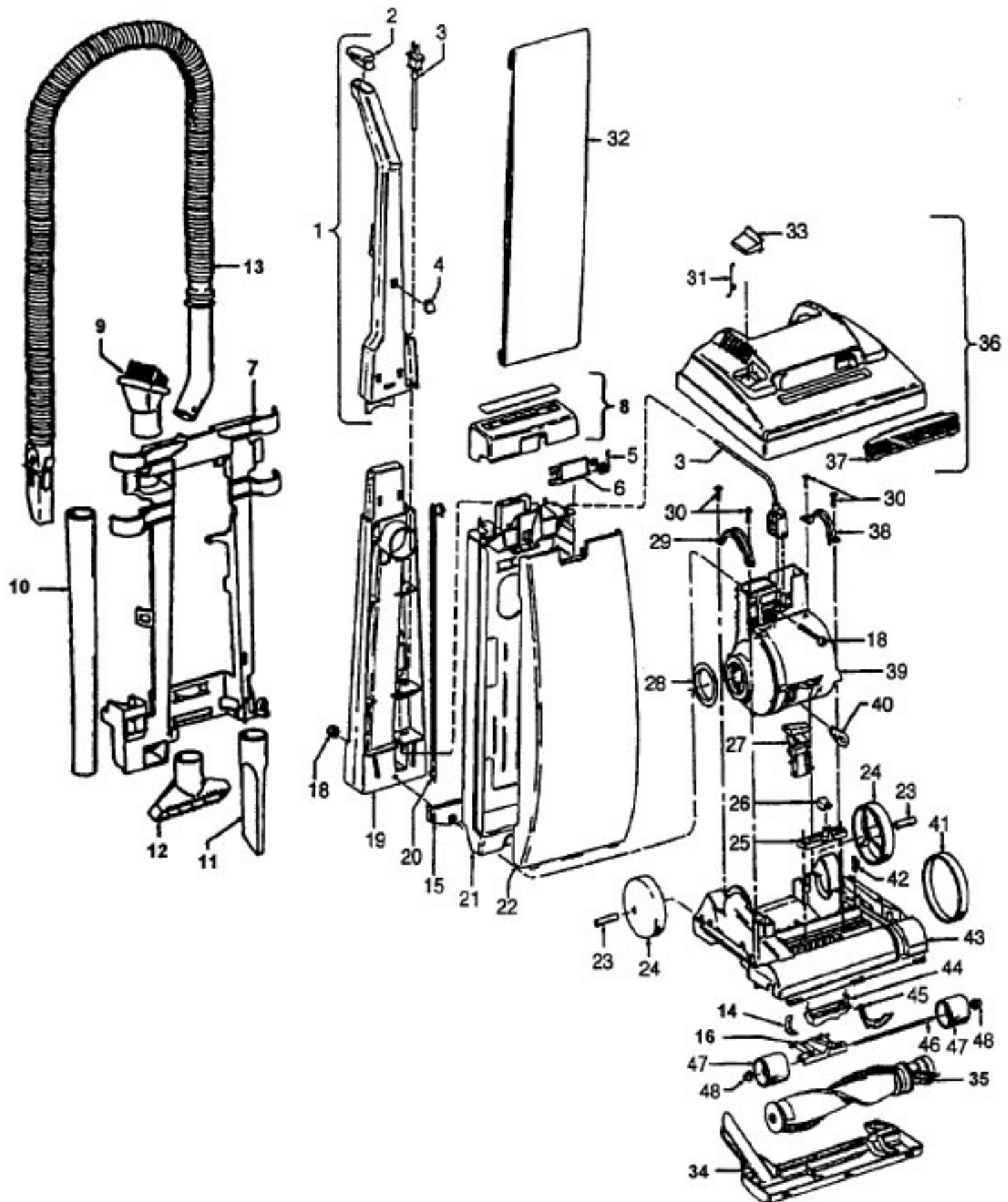


Elite  
Preferred  
Futura

Model U5070-930, U5096-930  
Model U5093-900, U5093-940, \*U5093-950, U5095-920  
Model U5098-930



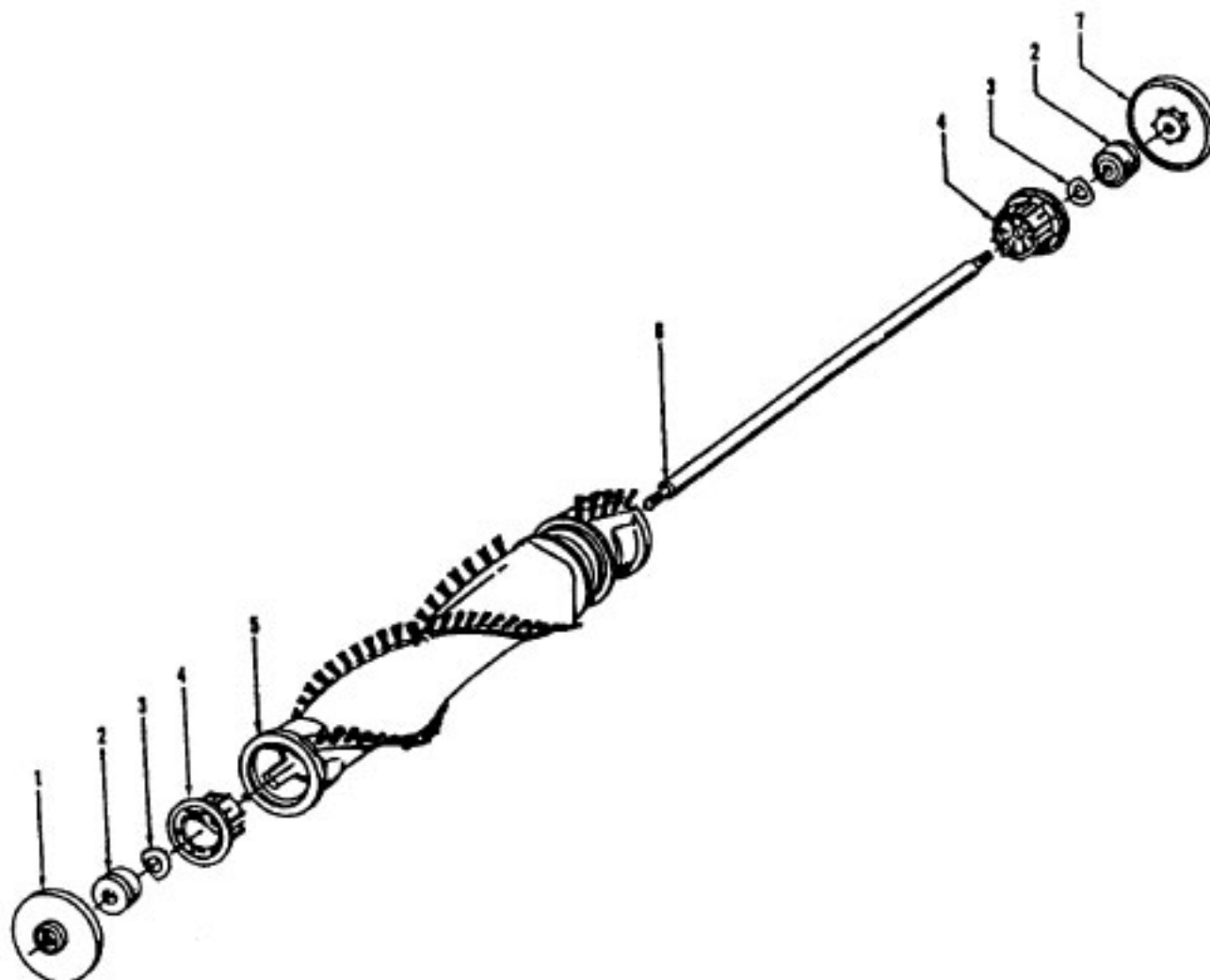
**Elite  
Preferred  
Futura**

**Model U5070-930, U5096-930  
Model U5093-900, U5093-940, \*U5093-950, U5095-920  
Model U5098-930**

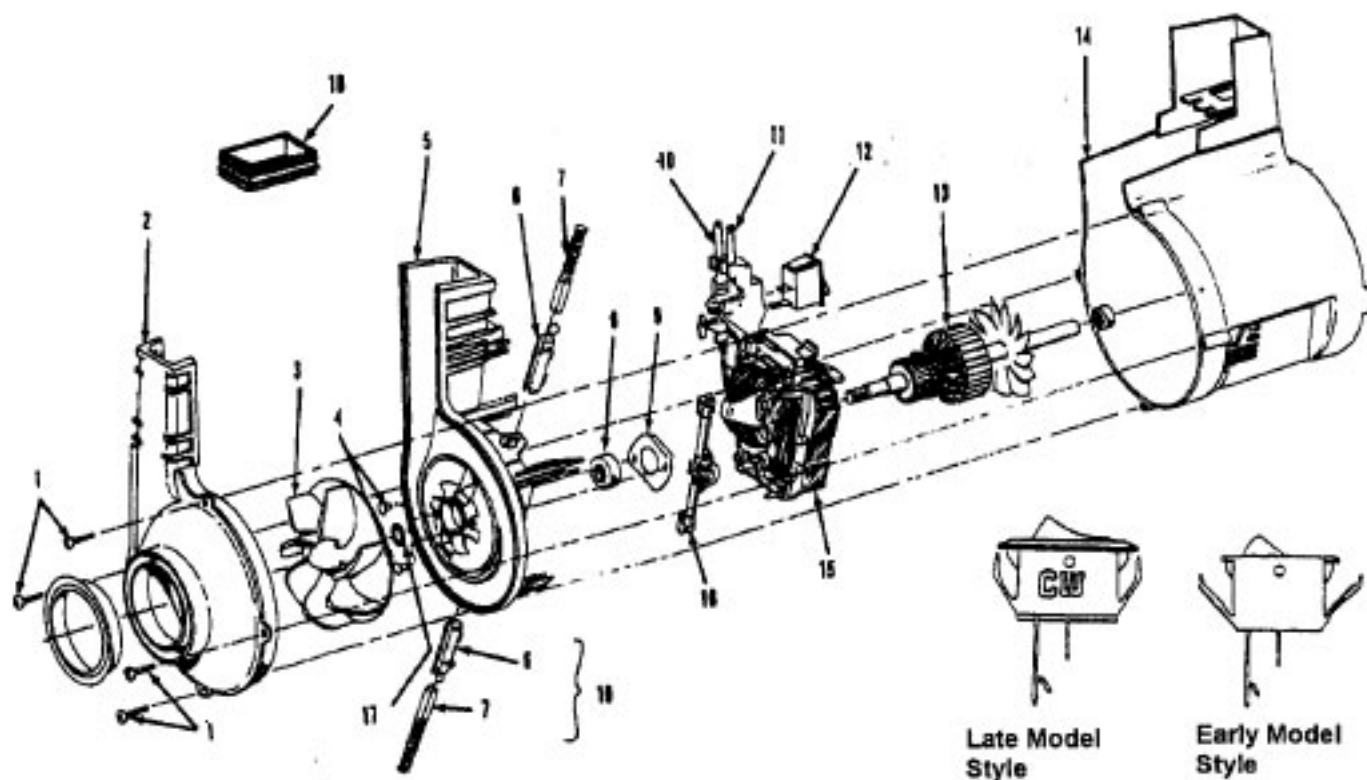
Ref. No.	Part No.	Description	Ref. No.	Part No.	Description
1	48663160	Upper Handle Assem.			
2	39458057	Handle Grip - U5070-930 prior to 4/98, U5093-900, U5093-940 prior to 12/01, U5095-920	34	37245108	Bottom Plate - U5070-930 prior to 4/98, U5095-920
	37911079	Handle Cap - U5070-930 after 4/98, U5093-940 after 12/01, U5096-930, U5098-930		37245017	Bottom Plate - AG - U5070-930 after 4/98, U5093-900, U5093-940, U5096-930, U5098-930
3	46388027	Cord - AG - 35 Ft.	35	48414081	Agitator (P-204)
	46388043	Cord - AG - 30' - 12 Amp - U5093-940		48414079	Agitator - U5093-940 (P-203)
4	37911038	Plug - ABE		<b>Note: All Hood Assembly's include items 33 and 37</b>	
5	38355008	Spring	36	42252031	Hood Assem -AAY - U5070-930
6	36151006	Latch		42252A77	Hood Assem. - ABY - U5095-920
7	36433110	Tool Rack - ABE		42252399	Hood Assem. - MB - U5096-930
	36433098	Tool Rack -ABE -U5093-900, U5093-940		42252A76	Hood Assem. - AAY - U5098-930
				42252B15	Hood Assem. - ACF - U5093-900
8	37959105	Bag Hsg. Cap		42252B19	Hood Assem. - ACF - U5093-940
9	43414145	Dusting Brush - Friction	37	39383098	Dirt Finder Lens - KC
10	38634078	Ext. Tube - AG	38	36131090	Motor Retainer - ABE - LH
11	38617024	Crevice Tool - AG	39	43576142	Motor (P-202)
12	38614029	Furniture Nozzle - AG		43576199	Motor - 12 Amp - U5093-940 (P. 364)
13	43434237	Hose Assem. Comp.	40	27313101	Dirt Finder Lamp
14	34572002	Cam Actuator Spring - FW	41	38528027	Belt
15	36425081	Bag Hsg. Bracket	42	13261AY	Rug Nozzle Rib Shoe
16	43248059	Front Wheel Assem. (Incl. It. 45,46,47)	43	42243001	Main Body Assem. (Incl. It. 23,24,27,42)
18	40201085	Nut & Bolt	44	38563011	Nozzle Height Adj. Cam.
19	39464005	Lower Handle - ABE	45	38452089	Lever (Use wheel assem. 43248059)
20	38456036	Switch Control Rod - ABB	46	32563012	Wheel Shaft - AY (Use 43248059)
21	37254068	Bag Housing - U5070-930, U5096-930, U5098-930	47	N/A	Wheel - AG (Use 43248059)
	37254069	Bag Housing - U5093-900, U5093-940, U5095-920	48	36131056	Wheel Retainer- BZ
	<b>Note: All Bag Housing Doors include items 5 and 6</b>		<b>Items Not Illustrated</b>		
22	37257222	Bag Hsg. Door - AAY - U5070-930		3944201P	Cord Wrap
	37257186	Bag Hsg. Door - ABE - U5095-920	<b>PACKAGING MATERIAL</b>		
	37257251	Bag Hsg. Door - MB - U5096-930		56511A21	Owner Manual
	37257252	Bag Hsg. Door - AAY - U5098-930		56511B16	Owner Manual - U5093-940
	37257270	Bag Hsg. Door - ACF - U5093-900, U5093-940		58185184	Carton - Common
23	31523012	Wheel Shaft		58347027	Cleaning Tool Carton
24	38522011	Rear Wheel - AG		58385020	Hard Bag Support
25	38567008	Cam Actuator - KE	<b>* Model U5093-950 is similar to the U5093-900 with the exception of carton graphics.</b>		
26	38421070	Indicator Knob - ABE			
27	38458022	Handle Release Lever - AG			
28	38784016	Seal			
29	36131057	Motor Retainer Cap - RH			
30	21447217	Screw-Self Tapping			
31	38351013	Spring			
32	4010001A	Throw - Away Bag - 3 Pak			
33	37257027	Door Assem -AAY -U5070-930, U5098-930			
	37257057	Door Assem. -ABY - U5095-930			
	37257155	Door Assem. MB - U5096-930			
	37257271	Door Assem. ACF - U5093-900, U5093-940			

Agitator - 48414081  
 Agitator - 48414075

Elite/ Elite II/ Dimension/ Legacy/ TurboPOWER/ Caddy Vac - Four Brush  
 Caddy Vac - Four Brush



Ref. No.	Part No.	Description
	48414081	Agitator Assem. Complete (Natural Bristles)
	48414075	Agitator Assem. Complete (Blue Bristles)
1	36423016	Thread Guard - RH
2	43267002	Agitator Bearing Assem. (2)
3	21347003	Conical Washer (2)
4	36422022	Agitator End (2)
5	N/A	Agitator Body
6	32724013	Agitator Shaft
7	36423017	Thread Guard - LH - AG



Ref. No.	Part No.	Description
	43576142	Motor Assem. Comp.
	43576181	Motor Assem. Comp. (Replaced by 43576204)
1	214793DA	Screw-Self Tapping (4)
2	38736033	Fan Chamber
3	38755030	Fan
4	N/A	Rivet - Semi Tubular (2)
5	N/A	Motor Housing Assem.
6	N/A	Motor Brush Holder (2)
7	N/A	Motor Brush Assem. (2)
8	N/A	Bearing
9	N/A	Bearing Retainer
10	36914004	Switch Bus Bar
11	39116005	Attachment Terminal
12	28218043	Switch Assem. - Early Models (Prior to 5/96)
	28161062	Switch Assem. - Late Models (After 5/96)
13	N/A	Armature/Bearing Assem.
14	37194046	Motor End Cap Assem. - MW
15	N/A	Field Assem.
16	N/A	Lamp Holder Assem.
17	21312793	Washer
18	38783020	Duct Seal
19	41311016	Motor Brush Holder Assem.

ITEMS NOT ILLUSTRATED

38781013	Duct Seal (8 1/2" Long adhesive backed foam seal used on early models in place of item 18)
54821001	Tape (Roll)