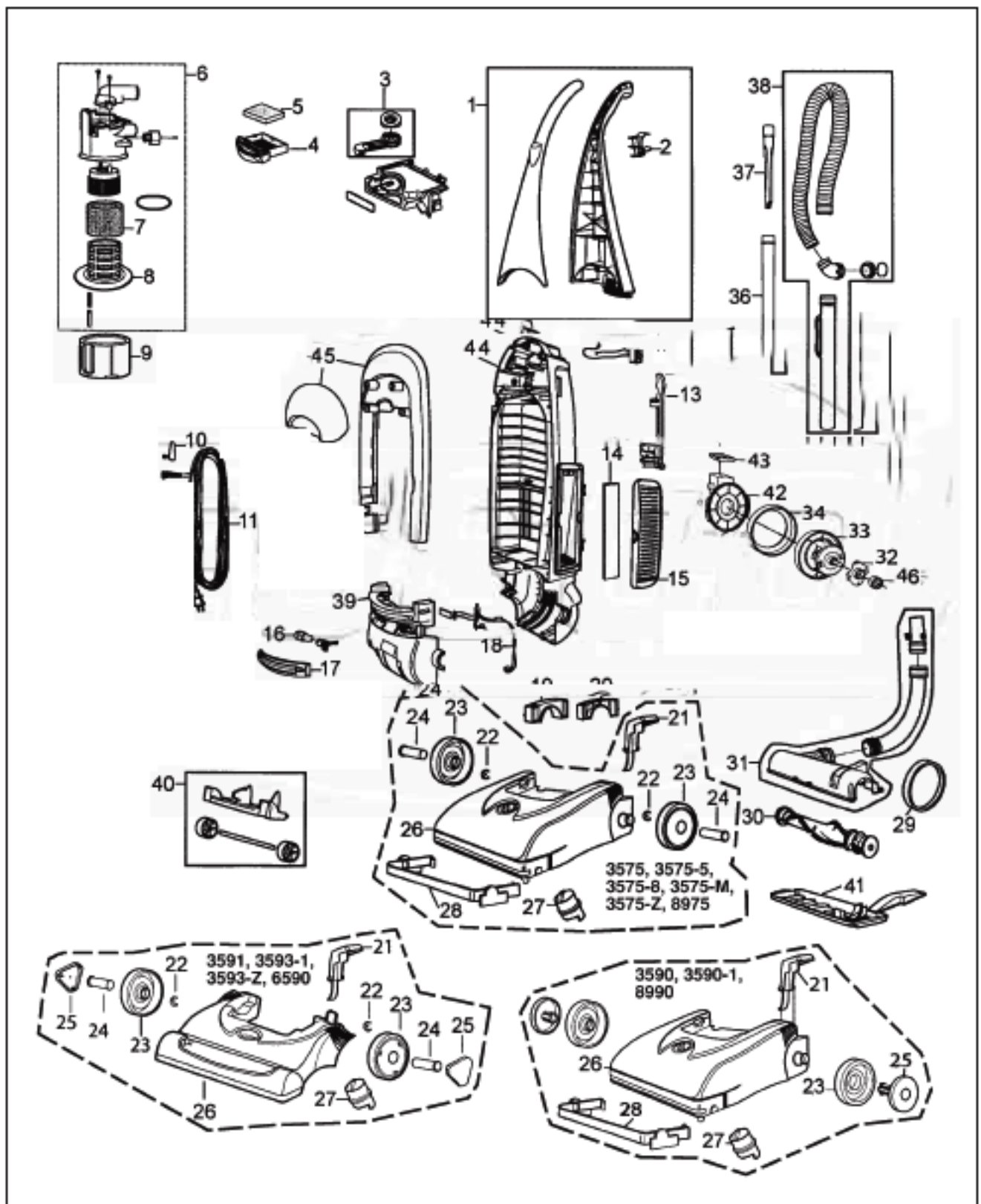


BISSELL Original & Replacement

CLEANVIEW BAGLESS Model 3575, 3575-5, 3575-8, 3575-M, 3575-Z, 3590, 3590-1, 3591, 3593-1, 3593-Z, 6590, 8975, 8990



Original & Replacement **BISSELL**

CLEANVIEW BAGLESS Model 3575, 3575-5, 3575-8, 3575-M, 3575-Z, 3590, 3590-1, 3591, 3593-1, 3593-Z, 6590, 8975, 8990

KEY	PART NO.	DESCRIPTION	KEY	PART NO.	DESCRIPTION
1	B-203-1078	Upper Handle Ass'y 3575-5, 3575-M, 3575-Z, 3590, 6590, 8990	25	NLA	Wheel Cap 3591
1	B-203-5803	Upper Handle Ass'y 3575	25	NLA	Wheel Cap 3593-1, 3593-Z
1	B-203-2060	Upper Handle Ass'y 3575-8	25	B-203-2065	Wheel Cap 6590
1	NLA	Upper Handle Ass'y 3590-1	26	NLA	Nozzle Housing 3575
1	B-203-2041	Upper Handle Ass'y 3591	26	B-203-1081	Nozzle Housing 3575-5, 3575-M, 3575-Z, 3590, 8990
1	NLA	Upper Handle Ass'y 3593-1, 3593-Z	26	B-203-2063	Nozzle Housing 3575-8
1	NLA	Upper Handle Ass'y 8975	26	NLA	Nozzle Housing 3590-1
2	B-203-1028	Hose Hanger	26	NLA	Nozzle Housing 3591
3	B-203-1119	Lock n' Seal Lever	26	NLA	Nozzle Housing 3593-1, 3593-Z
4	B-203-2058	Pre Motor Filter Tray Gray	26	B-203-2067	Nozzle Housing 6590
4	B-203-1072	Pre Motor Filter Tray Blue	26	NLA	Nozzle Housing 8975
4	B-203-1118	Pre Motor Filter Tray Purple	27	B-203-1122	Height Adjustment Knob
5	B-203-1073	Pre Motor Filter Style 8 & 14	28	N/A	Bumper (Order Key #26)
6	B-203-1116	Upper Tank Ass'y 3590, 3590-1, 3591, 3593-1, 3593-Z, 6590, 8990	29	B-32074	Belt Style 7, 9, 10 2 Pk
6	B-203-2549	Upper Tank Ass'y 3575, 3575-5, 3575-8, 3575-M, 3575-Z, 8975	29	BR-1007	Belt Style 7, 9, 10
7	B-203-1085	Separation Flange Filter Foam	30	B-203-1016	Brushroll 12 7/8" 3575, 3575-5, 3575-8, 3575-M, 3575-Z, 3590, 3590-1, 8975, 8990
8	B-203-1115	Separation Flange Frame	30	B-203-2013	Brushroll 14 1/4" 3591, 3593-1, 3593-Z, 6590
9	B-203-1117	Dirt Cup	31	B-203-1046	Nozzle Intake Ass'y 3575, 3575-5, 3575-8, 3575-M, 3575-Z, 3590, 3590-1, 8975, 8990
10	B-203-1018	Cord Hook	31	B-203-2039	Nozzle Intake Ass'y 3591, 3593-1, 3593-Z, 6590
11	B-203-2061	Power Cord 30' 3575, 3575-5, 3575-8, 3575-M, 3575-Z, 8975	32	NLA	Motor Support
11	B-203-1075	Power Cord 25' 3590, 3590-1, 8990	33	B-203-1100	Motor Ass'y 3575, 3575-5, 3575-8, 3575-M, 3575-Z, 3593-1, 3593-Z, 6590, 8975
11	B-203-1067	Power Cord 35' 3591, 3593-1, 3593-Z, 6590	33	B-203-1052	Motor Ass'y 3590, 3590-1, 3591, 8990
12	B-203-1035	Rocker Switch	34	NLA	Motor Gasket
13	B-203-1076	Tool Caddy	35	B-203-1083	Dust Brush
14	B-203-1009	Exhaust Filter 3590, 3590-1, 8975, 8990	36	B-203-1084	Extension Wand
14	B-32076	HEPA Exhaust Filter 3575, 3575-5, 3575-8, 3575-M, 3575-Z, 3591, 3593-1, 3593-Z, 6590	37	B-203-1063	Crevice Tool
14	BR-1800	HEPA Exhaust Filter 3575, 3575-5, 3575-8, 3575-M, 3575-Z, 3591, 3593-1, 3593-Z, 6590	38	B-203-1036	Hose Ass'y 3575, 3575-5, 3575-8, 3575-M, 3575-Z, 3590, 3590-1, 8975, 8990
15	B-203-1011	Exhaust Filter Grill	38	B-203-2012	Hose Ass'y 3591, 3593-1, 3593-Z, 6590
16	B-203-1007	Lamp 20 Watt	39	N/A	Motor Cover
17	B-203-1008	Headlight Lens	40	B-203-1015	Front Wheel Ass'y
18	NLA	Wiring Harness With Thermostat 3575, 3575-5, 3575-8, 3575-M, 3575-Z, 8975	41	B-203-1017	Bottom Plate 3575, 3575-5, 3575-8, 3575-M, 3575-Z, 3590, 3590-1, 8975, 8990
18	B-203-1034	Wiring Harness With Thermostat 3590, 3590-1, 3591, 3593-1, 3593-Z, 6590, 8990	41	B-203-2036	Bottom Plate 3591, 3593-1, 3593-Z, 6590
19	B-203-1040	Right Nozzle Clamp	42	NLA	Motor Case
20	B-203-1039	Left Nozzle Clamp	43	NLA	Motor Seal
21	B-203-1044	Handle Release Pedal 3575, 3575-5, 3575-8, 3575-M, 3575-Z, 3590, 3590-1, 8975, 8990	44	N/A	Main Body
21	B-203-0052	Handle Release Pedal 3591, 3593-1, 3593-Z, 6590	45	N/A	Carrying Handle Ass'y
22	B-203-2548	E-Ring 3575, 3575-5, 3575-8, 3575-M, 3575-Z, 3591, 3593-1, 3593-Z, 6590, 8975	46	NLA	Small Motor Cushion
23	NLA	Rear Wheel 3575, 3575-5, 3575-8, 3575-M, 3575-Z, 8975			
23	B-203-1043	Rear Wheel 3590, 3590-1, 8990			
23	B-203-2037	Rear Wheel 3591, 3593-1, 3593-Z, 6590			
24	B-203-2547	Axle 3575, 3575-5, 3575-8, 3575-M, 3575-Z, 3591, 3593-1, 3593-Z, 6590, 8975			
25	B-203-1045	Wheel Cap 3590, 3590-1, 8990			

NLA = No Longer Available

N/A = Not Available