

This Owner's Manual is provided and hosted by [Appliance Factory Parts](#).



# SUBZERO 700TR-3 Owner's Manual

[Shop genuine replacement parts for SUBZERO 700TR-3](#)



[Find Your SUBZERO Refrigerator Parts - Select From 117 Models](#)

----- Manual continues below -----

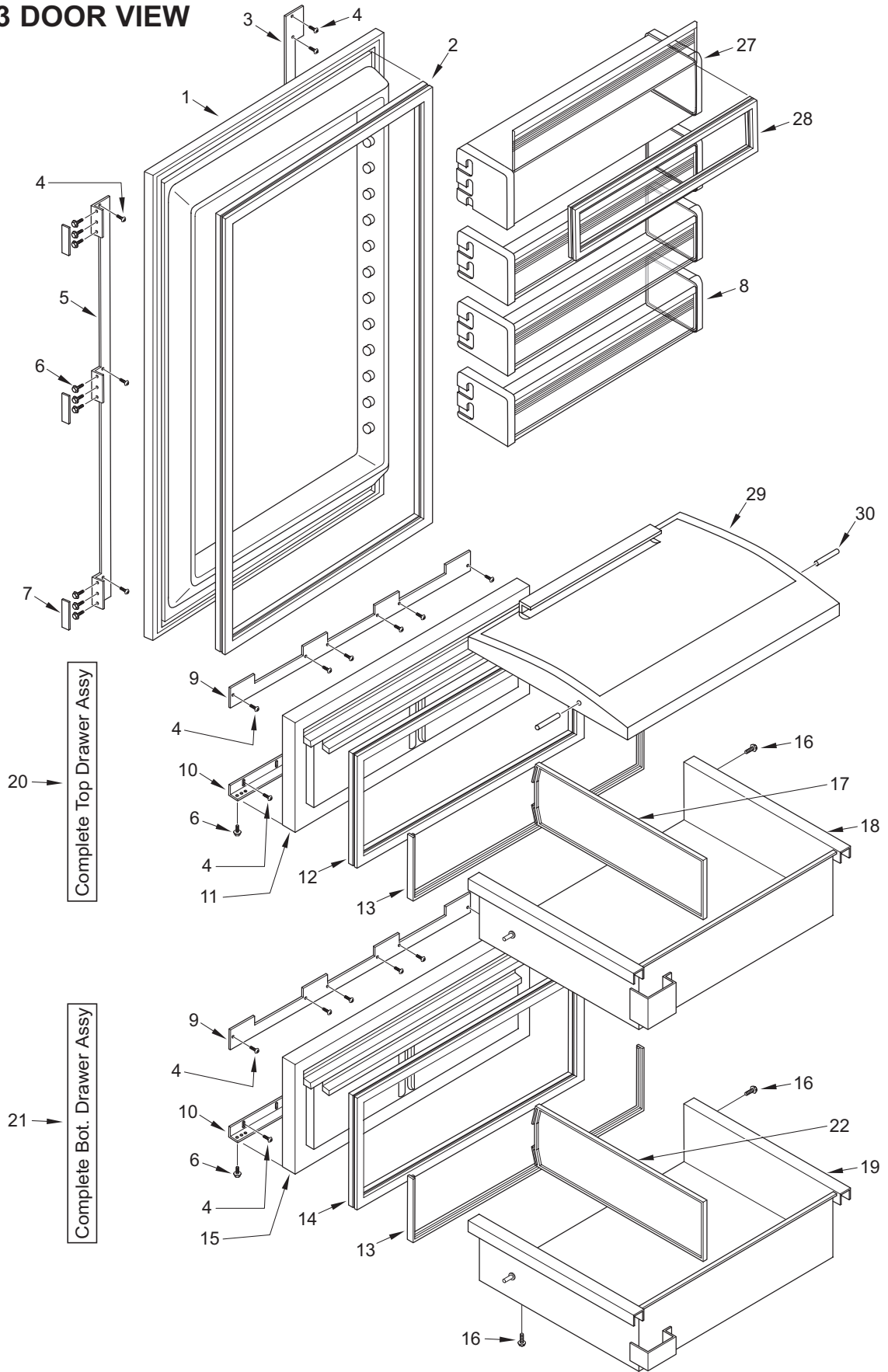


**700TR-3 DOOR PARTS LIST**

<u>Ref #</u>	<u>Part #</u>	<u>Description</u>	<u>Ref #</u>	<u>Part #</u>	<u>Description</u>
1	4202011	Door Assy, RH ( <i>Hinges not include</i> )	16	6200110	Screw, #10-12 x 5/8" Truss SS
	4202012	Door Assy, LH ( <i>Hinges not include</i> )	17	3601340	Divider, Top Drawer
2	3212210	Gasket, Door	18	3414060	Tub, Upr Drawer
3	3421960	Brkt, Door Panel Mtg Handle Side	19	3414070	Tub, Lwr Drawer
4	6200720	Screw, #8-18 x 1/2 PH Truss HD	20	4134450	Drawer Assy, Top
5	3421950	Brkt, Door Panel Mtg Hinge Side	21	4134460	Drawer Assy, Bot
6	6201500	Screw, #10X3/4 Drill PH Hex Was	22	3601350	Lower Drawer Divider
7	3421490	Panel Bracket Cover	23	NA	
8	4181270	Door Shelf Assembly	24	NA	
9	3421930	Bracket, Door Panel-Upper	25	NA	
10	3421940	Bracket, Door Panel-Lower	26	NA	
11	4131710	Upper Drawer Front Assembly	27	4181260	Dairy Compartment Assy (Includes Seal)
12	3212220	Gasket, Drawer-UPR	28	3211550	Diary Compartment Seal
13	3211560	Seal, Tub White 37-5/8"	29	3470320	Lid Assy, Crisper
14	3212230	Gasket, Drawer-LWR	30	3412240	Pin, Crisper (2)
15	4131740	Lower Drawer Front Assy			

**NOTE:** Door/Drawer panels on this model are a sales accessories. For part numbers of complete door panel sets or components of the door panel sets, contact the factory.

**700TR-3 DOOR VIEW**

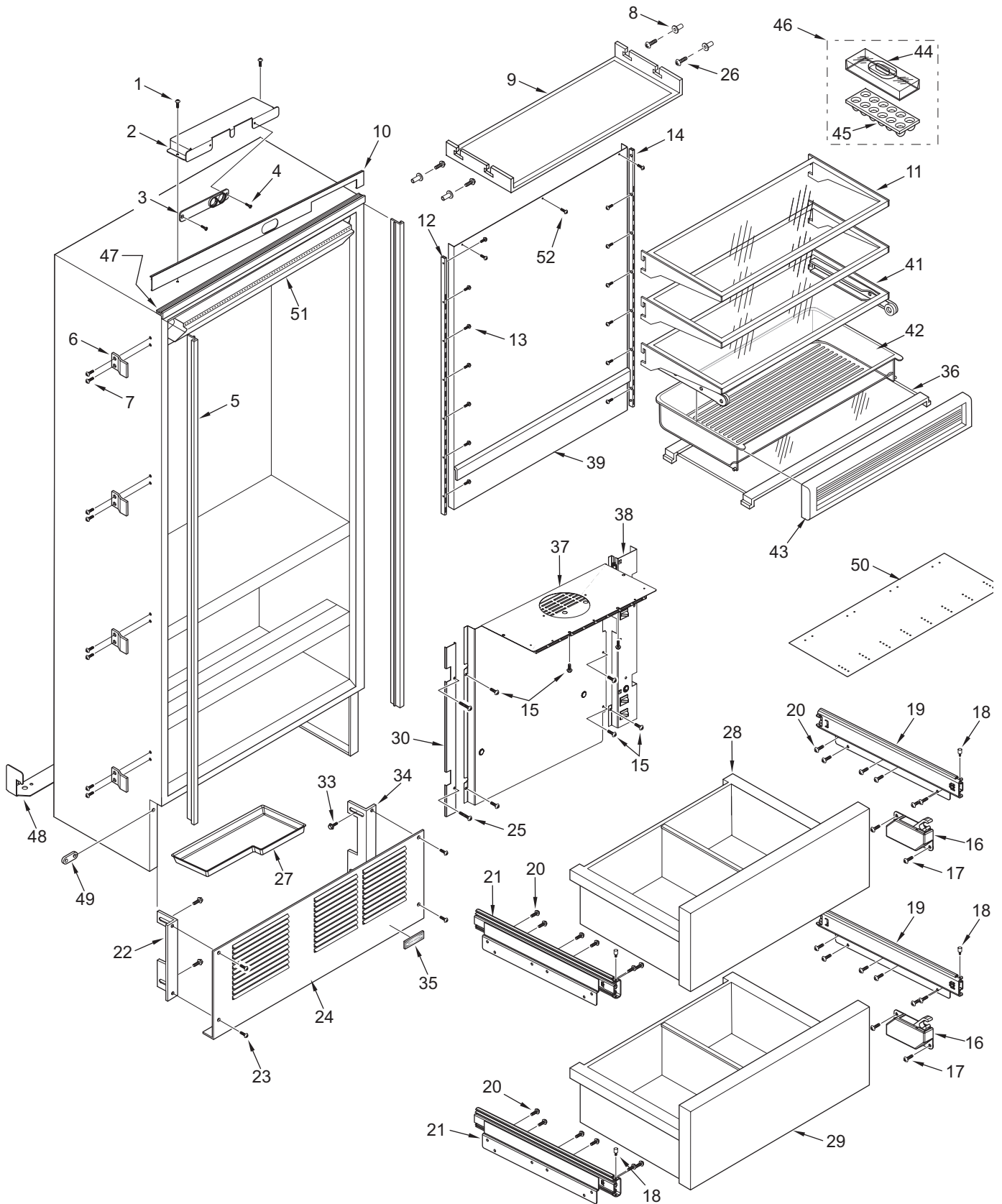




**700TR-3 COSMETIC PARTS LIST**

<u>Ref #</u>	<u>Part #</u>	<u>Description</u>	<u>Ref #</u>	<u>Part #</u>	<u>Description</u>
1	6200010	Screw, #10-12 x 3/4" Pan HD	26	6201330	Screw, #8 PH-Pan Head 1"
2	4161203	Switch Box Assy, Door (RH)	27	0263080	Drain Pan, 700
	4161204	Switch Box Assy, Door (LH)	28	NA	See Drawer View & Drawer Parts List
3	3450920	Bracket, Switch Mounting	29	NA	See Drawer View & Drawer Parts List
4	6200210	Screw, #8-32 x 1/2" Flat Head	30	0234680	Cover, Heat Exchanger
5	3516010	Molding, Side	31	NA	
6	3421510	Bracket, Ref to Cabinet	32	NA	
7	6200720	Screw, Tap, #8 x 1/2" PH FL HD	33	6200780	Screw, #10-24 x 1/2" PH Hex Wash
8	3520420	Insert / Diffuser Stand-off	34	0167662	Kickplate Bracket - LS
9	4161140	Light Diffuser Assy	35	3580170	Nameplate
10	3516451	Molding, Top RH	36	4181320	Tray, Glass Lwr-Low
	3516452	Molding, Top LH	37	4281121	Cold Plate Assy, Lwr TR3 Srvc
11	3602320	Shelf, Glass Cantilever	38	4162991	Switch Box Assy, Lwr TR3 SRVC
12	3602270	Shelf Ladder, Left	39	4281691	Cold Plate Assy, Ref Srvc
13	6200710	Screw, #8-18 x 3/8" Fillister HD	40	NA	
14	3602280	Shelf Ladder, Right	41	4181291	Shelf Assy, Deli-RH
15	6201270	Screw, #8-18 x 5/8" PH PN SS-Gnd		4181292	Shelf Assy, Deli-LH
16	3541020	Closer, Drawer-RH	42	4181300	Tray Assy, Deli - 4" (Complete)
17	6200110	Screw, #10-12 x 5/8" Truss SS	43	NA	See 4181300
18	3550720	Pin, White Thread	44	3412280	Egg Tray Cover
19	4134430	Drawer Assy, Slide-RH	45	3412270	Egg Tray
20	6202030	Screw, 1/4-20 x 1/2" But HD, Patchlk	46	4131810	Egg Tray with Cover
21	4134440	Drawer Assy, Slide-LH	47	4152070	Trim Assy, Top
22	0167661	Kickplate Bracket - RS	48	0167550	Bracket, Anti-Tip
23	6200050	Screw, #10-12 x 1/2" Pan HD	49	3421460	Bracket, Unit to Unit
24	3530430	Grille, Kickplate	50	3754220	Door Panel Drilling Template
25	6201120	Screw, #8-18 X 2 Truss Hd	51	4162600	Control Panel Assy, Service
			52	6202050	Screw, #8-18X1/2 Ph Pn SS-Gnd

**700TR-3 COSMETIC VIEW**

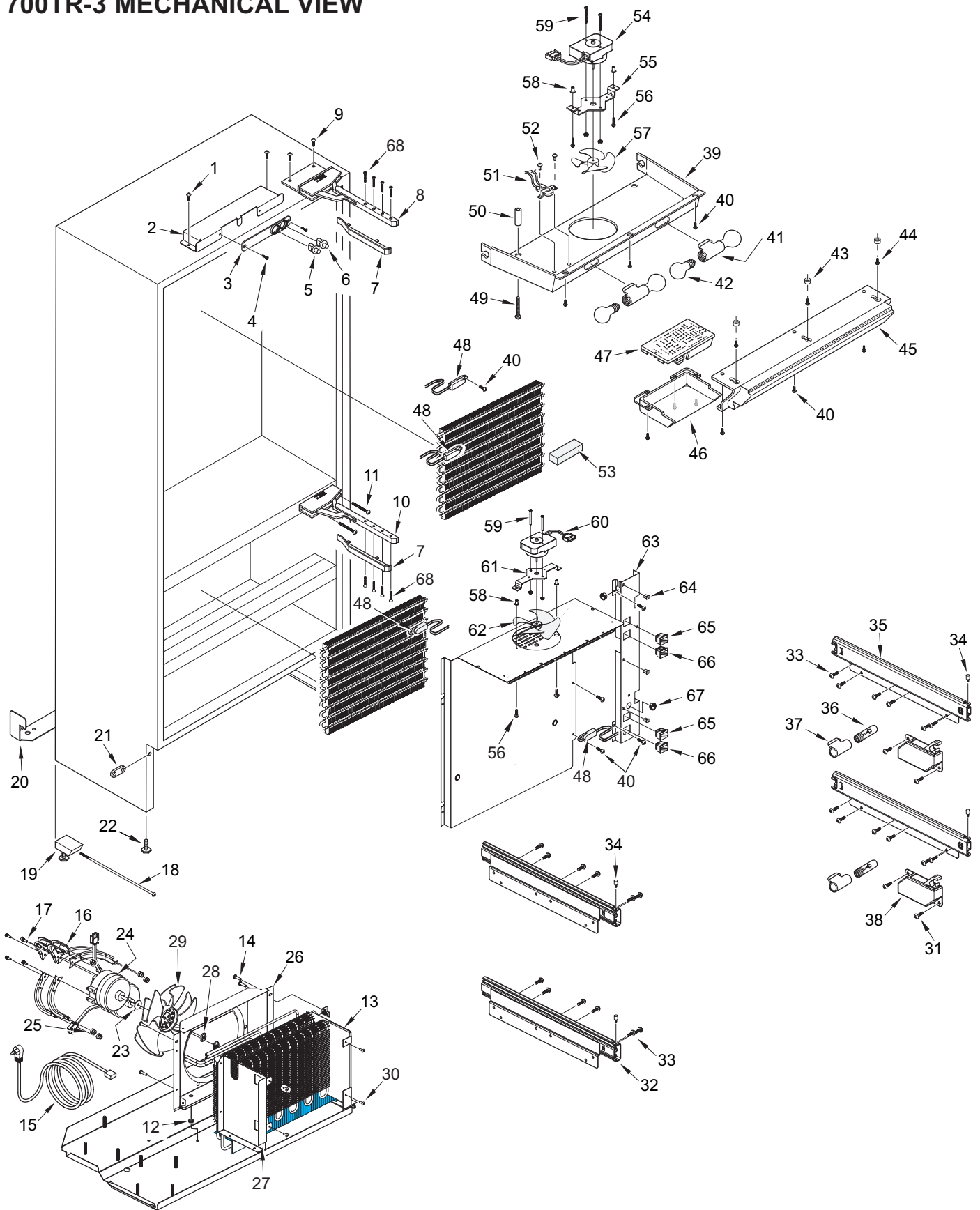




**700TR-3 MECHANICAL PARTS LIST**

<u>Ref #</u>	<u>Part #</u>	<u>Description</u>	<u>Ref #</u>	<u>Part #</u>	<u>Description</u>
1	6200010	Screw, #10-12 x 3/4" Pan HD	37	3050220	Socket, Light Int Base Sngl
2	4161203	Switch Box Assy, Door (RH)	38	3541020	Closer, Drawer
	4161204	Switch Box Assy, Door (LH)	39	4230541	Shroud Assy, Ref FanSrvc
	0212471	Box, Rf Switch	40	6201270	Screw, #8-18 x 5/8" PH PN SS-Gnd
3	3450920	Bracket, Switch Mounting	41	3050250	Socket, Light Med Base Dbl
4	6200210	Screw, #8-32 x 1/2" Flat Head	42	3030030	Bulb, Light 40W
5	3060030	Switch, Light	43	6160240	Nylon Spacer
6	3060020	Switch, Fan	44	6200720	Screw, #8-18 x 1/2 PH Truss HD
7	3541050	Hinge Cover	45	4162600	Control Panel Assy, Service
8	3541031	Hinge Assy, TOP - RH	46	4152050	Cover Assy, Control
	3541032	Hinge Assy, TOP - LH	47	4204380	Board, Cntrl Service 600/700
9	6200780	Screw, #10-24 x 1/2" PH Hex Washer	48	4204150	Thermistor, ASM Srvc Pkg
10	3541041	Hinge Assy, MDL - RH	49	6201010	Screw, #8-15 x 2" Pan Head
	3541042	Hinge Assy, MDL - LH	50	6220540	Screw Grommet/Stand-off, 1.375
11	6201600	Screw, 1/4-20X5/8 Sems But Hd	51	3082140	Light Terminator
12	3220370	Grommet, 1/4" X 3/16"		3024310	W/H, Ref Light (Incl Terminator)
13	4281740	Shroud Assy, Left Cond Srvc	52	6180010	Pop Rivet, 1/8"
14	6200010	Screw, #10-12 x 3/4" Pan HD	53	6231490	Tape, Foam XLPE
15	7002603	Cord,Power SVCE	54	4200170	Motor Assy, Repl. Ref Fan, Svce
16	0261150	Bracket, Cond Fan Mtg (3)	55	0260370	Bracket, Fan (Production)
17	6201580	Screw,#8-36 X 1/2 Nylon Patch	56	6201470	Screw, #8-32X3/4 SS
18	3421500	Adjusting Rod	57	3151000	Blade, Fre 130MM 4 Pedal Black
19	4202000	Rear Leveler Assembly	58	6150850	Wellnut, #8-32
20	0167550	Bracket, Anti-Tip	59	6201820	Screw,#8-32X1 3/4 SS PNHD
21	3421460	Bracket, Unit to Unit	60	4200170	Motor Assy, Repl. Ref Fan, Svce
22	3570060	Bolt, Leveler 3/8-16X2-1/8	61	0262891	Bracket, Evap Fan Srvc
23	3210340	Neoprene Silencer, 7/8"	62	3151000	Blade, Fre 130MM 4 Pedal Black
24	4200740	Motor Pkg, Cond Fan	63	4162991	Switch Box Assy, Lwr TR3 SRVC
25	3220360	Grommet, Mtg Brkt	64	6220220	Screw Grommet, 1/32 x 3/8" SQ
26	4281310	Shroud Assy, Cond Fan Srvc	65	3060140	SPST Light Switch (2)
27	4281750	Shroud Assy, Right Cond Srvc	66	3060130	SPST Fan/Icemaker Switch (2)
28	6150410	Nut, 1/4-20	67	3220510	Heyco, 3/4 #2873 (2)
29	3150800	Blade, Condenser Forward-SW	68	6110610	Screw, #10-24 x 3/4 FL Socket HD
30	6201420	Screw			
31	6200110	Screw, #10-12 x 5/8" Truss SS			
32	4134430	Drawer Assy, Slide-RH			
33	6202030	Screw, 1/4-20 x 1/2" But HD, Patchlk			
34	3550720	White Thread Pin			
35	4134440	Drawer Assy, Slide-LH			
36	3030060	Bulb, Light 25W 1X2-1/2			
				<u>NOT SHOWN</u>	
				3024990	W/H, Cabinet
				3024980	W/H, Unit
				1601400	Drain Tube, Wire - 1/2" x 72"

**700TR-3 MECHANICAL VIEW**





**700TR-3 SEALED SYSTEM PARTS LIST**

<u>Ref #</u>	<u>Part #</u>	<u>Description</u>
1	4201880	Compressor, Refrig. (EMI30HER - Service Compressor)
	3111370	Relay, (1351400 - Used w/EMI30HER Service Comp.)
	3111410	Overload, (4TM734LFB - Used w/EMI30HER Service Comp.)
2	3112211	Electrical Assy, EMU30HSC (Used with EMU30HSC Production Comp.)
3	3112500	Capacitor, 12MF (Used with EMU30HSC Production Comp.)
4	3112420	Term Cvr Spring, EGZ80 (Used with EMT30HSC Production Comp.)
5	4201880	Compressor, Refrig. (EMI30HER - Service Compressor)
	3111370	Relay, (1351400 - Used w/EMI30HER Service Comp.)
	3111410	Overload, (4TM734LFB - Used w/EMI30HER Service Comp.)
6	3112211	Electrical Assy, EMU30HSC (Used with EMU30HSC Production Comp.)
7	3112500	Capacitor, 12MF (Used with EMU30HSC Production Comp.)
8	3112420	Term Cvr Spring, EGZ80 (Used with EMT30HSC Production Comp.)
9	3014230	Filter-Drier, High Side
10	0260341	Bracket, Drier
11	6120170	Locking Cable Tie, Red, 11-1/2"
12	3014100	Drier, Suction Line (Service Only)
13	6150220	Nut, 5/16-18 Hex Zinc (4 each compressor)
14	6240050	Washer, Flat 5/16" (4 each compressor)
15	6160070	Sleeve, 5/16 x 7/16 x 7/8" (4 each compressor)
16	3150170	Rubber Grommet, Large, 15/16" (4 each compressor)
17	3120450	Condenser, Witre on Tube
18	NA	Tray, Unit - Special Order, Contact Factory
19	3130640	Evaporator, Ref
20	4251680	Heat Exch, Upper
21	6201270	Screw, #8-18 x 5/8" PH PN SS-Gnd
22	3130640	Evaporator, Ref
23	NA	
24	4251670	Heat Exch, Lower
25	6201330	Screw, #8 PH-Pan Head 1"
26	6231490	Tape, Foam XLPE

**700TR-3 SEALED SYSTEM VIEW**

