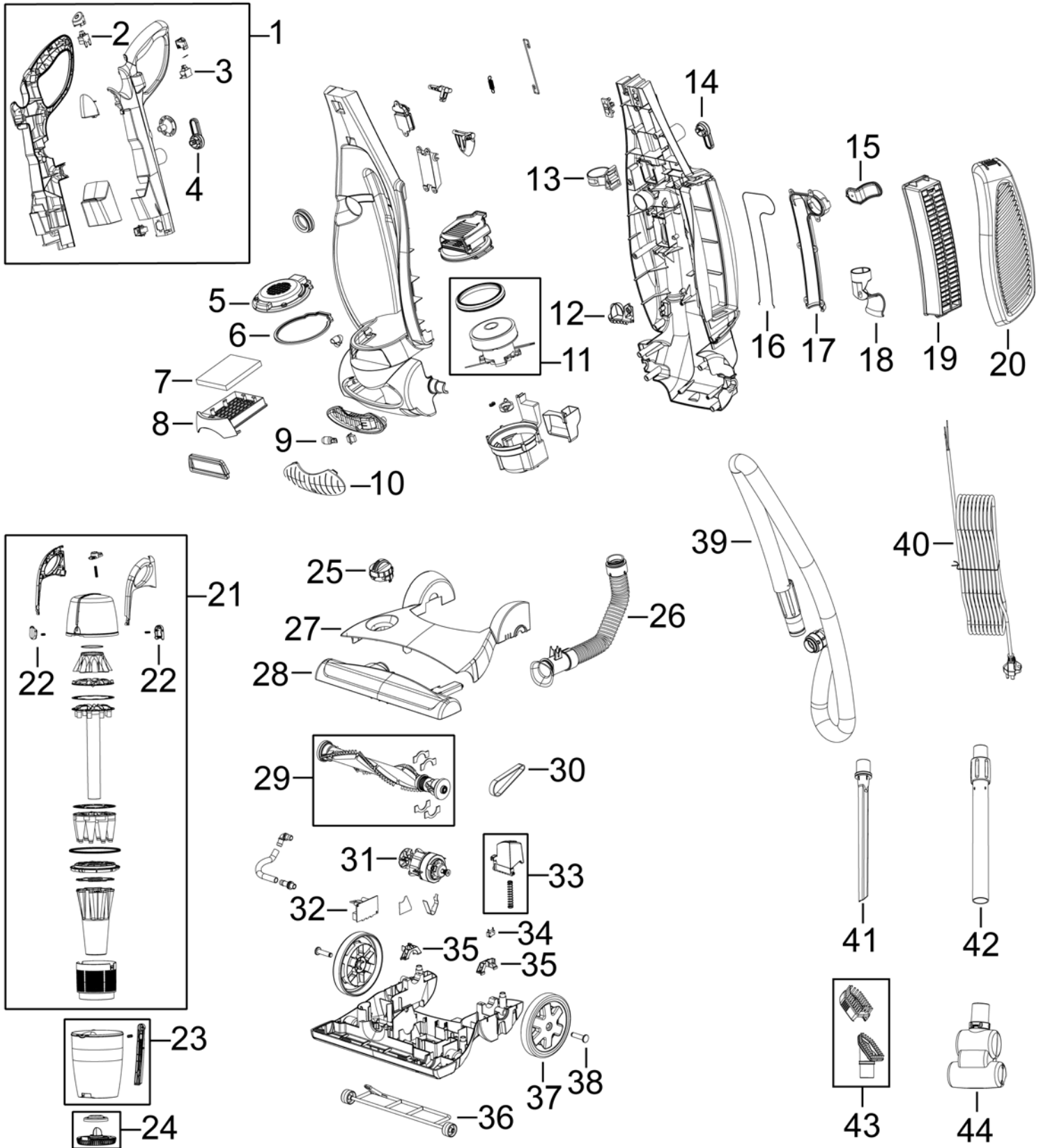


UPRIGHT VACUUM

Healthy Home Vacuum™ Series 5770, 5990, 6100



UPRIGHT VACUUM

Healthy Home Vacuum™ Series 5770, 5990, 6100

KEY	PART NO	DESCRIPTION
1	B-203-1311	HANDLE ASSY
2	B-203-1316	SWITCH - POWER
3	B-203-1317	SWITCH - BRUSH
4	B-203-1315	CORD WRAP
5	B-203-1378	UV REFLECTOR
6	B-203-1308	CYCLONE GASKET
7	B-203-1374	PRE MOTOR FILTER
8	B-203-1352	PRE MOTOR FILTER TRAY
9	B-203-1377	LIGHT BULB
10	B-203-1354	HEADLIGHT LENS
11	B-203-1360	VACUUM MOTOR W/ GASKET & ISOLATOR
12	B-203-1356	LOWER WAND SUPPORT
13	B-203-1355	UPPER WAND SUPPORT
14	B-203-1315	CORD WRAP
15	B-203-1357	HOSE CLIP
16	B-203-1379	ROPE GASKET - DIVERTER COVER
17	B-203-1361	DIVERTER COVER
18	B-203-1358	HOSE GUIDE
19	B--3282	HEPA EXHAUST FILTER - 6/CS
20	B-203-1353	FILTER DOOR
21	B-203-1310	UPPER CYCLONE ASSY
22	B-203-1375	CYCLONE LATCHES & SPRINGS
23	B-203-1313	Dirt Bin & Debris Door Ass'y
24	B-203-1299	DEBRIS DOOR
25	B-203-1320	HEIGHT ADJUSTMENT KNOB
26	B-203-1348	HOSE ASSY - FOOT
27	B-203-1321	TOP COVER -
28	B-203-1324	BRUSH WINDOW
29	B-203-1328	BRUSH W/ FELT GASKETS
30	B-203-1329	BELT
31	B-203-1350	BRUSH MOTOR
32	B-203-1349	CIRCUIT BOARD
33	B-203-1340	DETENT PEDAL
34	B-203-1347	MICROSWITCH
35	B-203-1346	BODY PIVOT CLAMP W/ SCREW
36	B-203-1319	FRONT WHEEL ASSY
37	B-203-1341	REAR WHEEL
38	B-203-1345	AXLE W/ E-RING
39	B-203-1359	HOSE ASSY
40	B-203-1318	CORD
41	B-203-1363	CREVICE TOOL
42	B-203-1364	TELESCOPING WAND - PLASTIC
42	B-203-1373	TELESCOPING WAND - METAL
43	B-203-1365	COMBO UPHOLSTERY TOOL
44	B-203-1362	TURBOBRUSH
xx	B-203-1376	HANDLE SCREW PACK
xx	B-203-1369	USER'S GUIDE