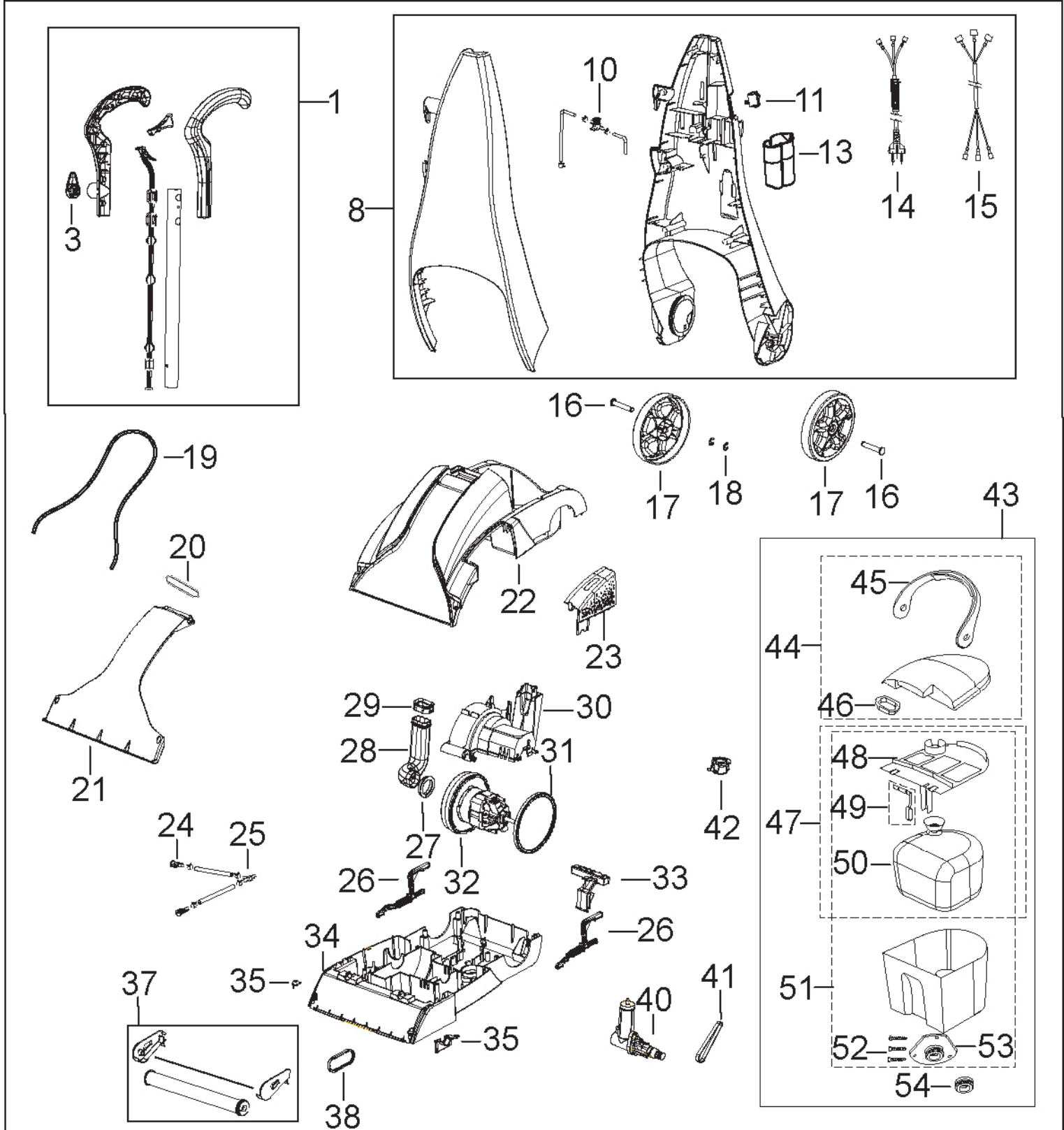




# Upright Deep Cleaner

## Model 1694-W, 1694-V



To convert a Bissell part # to an ESSCO part #,  
Add a "B-" to the beginning and insert a "-" after the 3rd digit  
i.e. 2149851 becomes B-214-9851

# UPRIGHT DEEP CLEANER

POWERSTEAMER MODELS 1694-W, 1694-V



KEY	PART NO	DESCRIPTION	KEY	PART NO	DESCRIPTION
1	2144042	HANDLE & GRIP ASSY - PLUM	40	2107181	PUMP
8	2144060	LOWER HANDLE COMP - PLUM	41	2150628	PUMP BELT
10	2109592	VALVE ASSY W/ VINYL TUBE	42	2140710	AUTOLOAD RECEIVER
11	5559125	SWITCH ROCKER, RED	43	0159043	TANK ASSY W/ LINT SCN
13	2133010	MEASURING CUP	44	0154439	TANK LID W/ SCN, GASKET, & HANDLE
14	2102836	CORDSET	45	2034435	TANK HANDLE
15	2104446	HARNESS W/ INS TERMINALS	46	2133501	LINT SCREEN, RED
16	2100170	AXLE	47	2140213	BAFFLE & BLADDER ASSY
17	2139754	WHEEL	48	2130213	BAFFLE & FLOAT ASSY
18	2106215	AXLE E-RING	49	2140325	FLOAT ASSY
19	2103418	GASKET EXTRUDED .136" x 32"	50	2100315	BLADDER
20	2104052	TANK INTERFACE SEAL	51	2149045	TANK BOTTOM W/ AUTOLOAD
21	2149871	WINDOW NOZZLE	52	2807075	SCREW #6 x 1/2
22	2134934	MAIN HOUSING - PLUM	53	2107041	AUTO LOAD ASSY
23	2132991	BELT COVER - PLUM	54	2106241	OVERSEAL FOR AUTOLOAD
24	2106107	SPRAY TIP			
25	2102602	T - CONNECTOR	xx	2035616	HANDLE SCREW
26	2000010	LEVER ELEVATOR LEFT & RIGHT	xx	2102485	CLAMP LARGE
27	2104051	MOTOR INTAKE GASKET	xx	2102490	CLAMP SMALL
28	2103161	MOTOR DUCT	xx	2102602	CONNECTOR T
29	2104050	DUCT GASKET	xx	2139438	TUBE VINYL 20"
30	2132984	MOTOR COVER	xx	2139449	TUBE VINYL 7.5"
31	2104056	MOTOR GASKET	xx	2141782	DRAIN CAP - RECOVERY TANK
32	0175972	MOTOR	xx	2158001	T ASSY ODD BARB
33	5559102	PEDAL - HANDLE RELEASE	xx	5557030	SCREW #8 x 3/4 6-PACK
34	2140435	BASE W/ 4-ROW BRUSH	xx	2102516	USER'S GUIDE
35	5559113	ARM RETAINER RT & LT	xx	3105802	USER'S GUIDE - CANADA
37	2101157	BRUSH / PIVOT ARM ASSY - 4 Row	xx	2102516	USER'S GUIDE - UNITED STATES
38	0150621	BRUSH BELT			

Plum = 1694-W, 1694-V

**To convert a Bissell part # to an ESSCO part #,  
 Add a "B-" to the beginning and insert a "-" after the 3rd digit  
 i.e. 2149851 becomes B-214-9851**