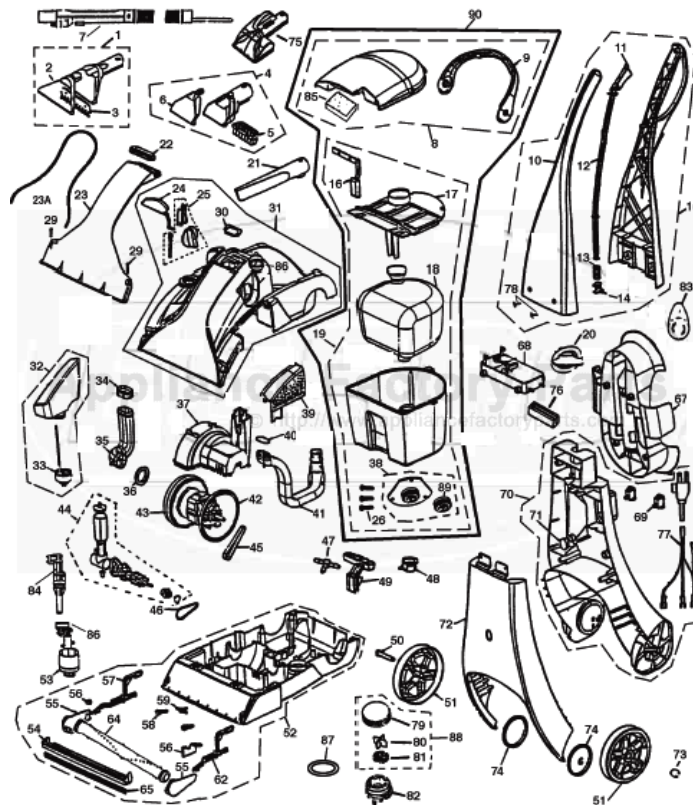


This Owner's Manual is provided and hosted by [Appliance Factory Parts](#).



Bissell 1698-1 Owner's Manual

[Shop genuine replacement parts for Bissell 1698-1](#)



[Find Your Bissell Vacuum Cleaner Parts - Select From 377 Models](#)

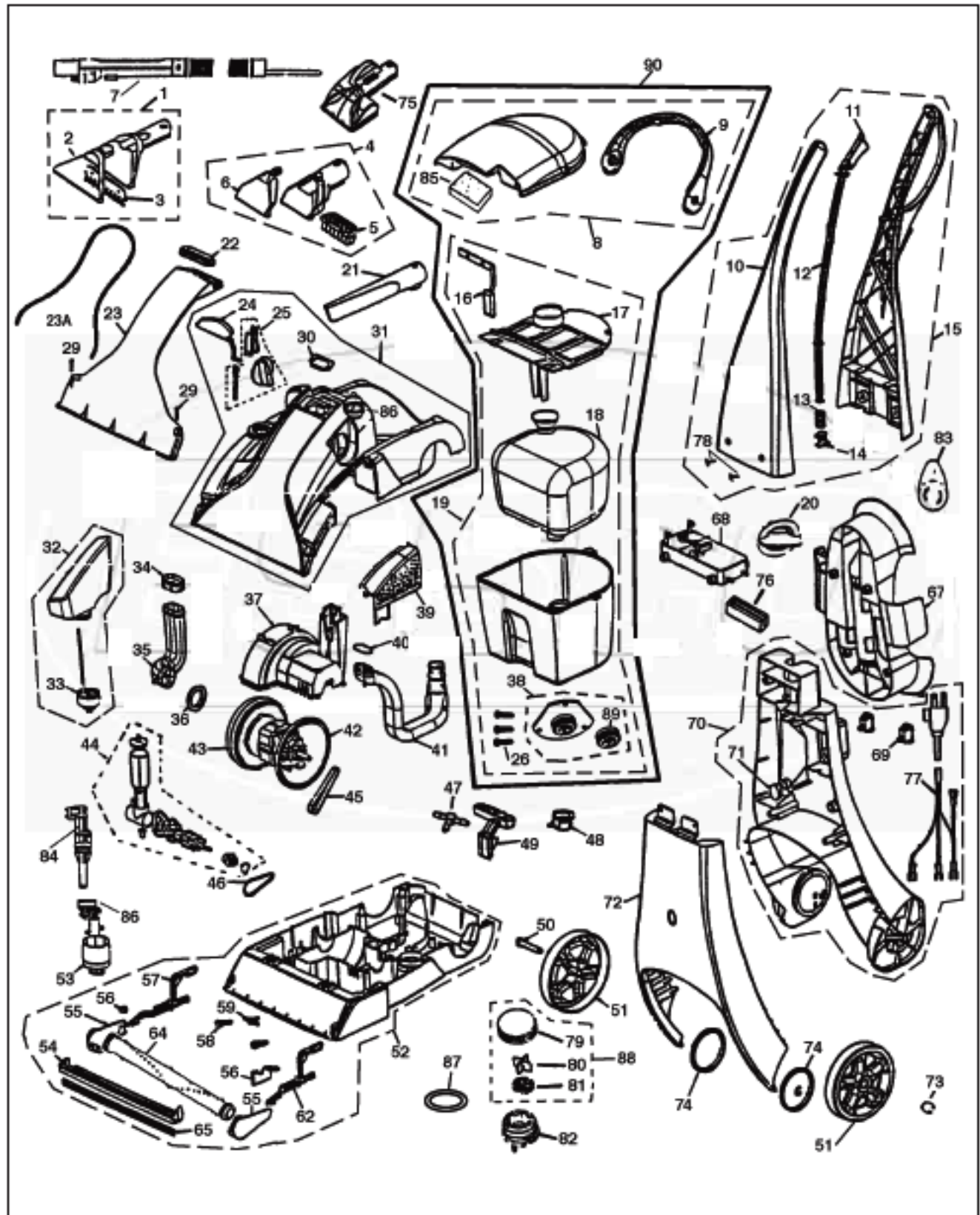
----- Manual continues below part list -----

Available Replacement Parts for Bissell 1698-1

B-010-0620	BELT BISSELL PUMP BELT 1 PACK
B-603-0983	BRUSH/ NOZZLE HEAD.
B-010-0621	REPLACEMENT BRUSH BELT
br-1075	Geared brushroll belt .

BISSELL Original & Replacement

PROHEAT POWERSTEAMER Models 1697, 1698, 1698-1



Original & Replacement **BISSELL**

PROHEAT POWERSTEAMER Models 1697, 1698, 1698-1

KEY	PART NO.	DESCRIPTION	KEY	PART NO.	DESCRIPTION
1	B-603-0983	Upholstery Nozzle Ass'y	52	B-014-0442	Base Ass'y
2	NLA	Spray Window 4" (Order B-010-9201)	53	B-010-0106	Automix Ass'y Less Knob
3	B-603-0966	Brush Insert 4"	54	NLA	Bare Floor Attachment
4	B-015-9155	Tuff Stain Tool 3"	55	NLA	Left & Right Pivot Arm Kit (Order B-210-1157)
5	B-014-9155	Brush Insert 3"	56	B-555-9113	Left & Right Pivot Arm Retainer
6	NLA	Spray Window 3" (Order B-015-9155)	57	B-200-0010	Left & Right Elevator Lever
7	B-010-9210	Hose Ass'y (Inc. Key #41)	58	B-010-6105	Spray Tip
8	B-015-4439	Top Ass'y With Handle	59	B-010-2602	Regular "T" Connector
9	B-603-4439	Tank Handle	62	NLA	Elevator Lever Spring (Order B-200-0010)
10	NLA	Handle Front 1697 (Order B-013-4426)	64	B-210-1157	Brushroll Ass'y With Pivot Arms
10	B-014-4446	Handle Front 1698	65	NLA	Bare Floor Squeegee
10	NLA	Handle Front 1698-1 (Order B-214-4405)	67	B-013-6750	Tool Storage Caddy
11	B-013-9168	Handle Trigger	68	B-010-4501	Heater
12	B-013-7511	Control Rod & Spring Ass'y	69	B-010-8827	Power Switch
13	NLA	Control Rod Spring (Order B-013-7511)	69	B-710-8617	Red Heater Switch 1698
14	B-010-9592	Valve Ass'y	69	B-010-8801	Lighted Heater Switch 1698-1
15	NLA	Handle Ass'y 1697	70	B-014-4431	Main Body Ass'y 1697
15	B-214-4406	Handle Ass'y 1698	70	B-014-4432	Main Body Ass'y 1698
15	NLA	Handle Ass'y 1698-1	70	NLA	Main Body Ass'y 1698-1 (Order B-014-4432)
16	B-014-0325	Float Ass'y	71	B-010-5601	Light Ass'y 1698, 1698-1
17	B-013-0212	Tank Baffle & Bladder (Incl. Key #18)	72	NLA	Front Panel 1697 (Order B-014-4417)
18	B-010-0315	Bladder	72	B-014-4417	Front Panel 1698
19	B-015-9041	Tank And Bladder Ass'y	72	NLA	Front Panel 1698-1 (Order B-014-4417)
20	B-014-1782	Drain Cap With Gasket	73	B-010-6215	E-Clip
21	B-010-9148	Crevice Tool	74	NLA	Wheel Bushing
22	B-010-4052	Oval Window Seal	75	B-010-1183	Turbo Brush Ass'y
23	B-014-9863	Base Window	76	B-010-8550	Rubber Block
23A	B-210-3418	Window Gasket	77	B-010-2850	Power Cord 33' 3 Wire
24	B-013-6986	Diverter	78	B-010-0290	Handle Screw
25	B-014-5170	Diverter Knob Ass'y	79	NLA	Flow Indicator Cap (Order B-555-6503)
26	B-880-7075	Screw	80	NLA	Flow Indicator Spinner (Order B-555-6503)
29	B-880-7030	Screw	81	NLA	Flow Indicator Filter (Order B-555-6503)
30	B-010-4054	Diverter Gasket	82	B-010-0489	Flow Indicator Base (Inc. Key #87)
31	B-015-4908	Housing Ass'y 1697	83	B-013-3722	Cord Hook
31	NLA	Housing Ass'y 1698 Black	84	B-010-8722	Automix Piston
31	NLA	Housing Ass'y 1698-1	85	B-015-3500	Lint Screen
32	B-010-1785	Shampoo Bottle Ass'y (Inc. Key #33)	86	B-010-5108	Automix Knob
33	B-010-1795	Cap And Insert Ass'y	87	NLA	Flow Indicator O-Ring (Order B-010-0489)
34	B-010-4050	Duct Gasket	88	B-555-6503	Flow Indicator Ass'y
35	B-010-3161	Short Air Duct	89	B-010-6241	Tank Seal
36	B-010-4051	Motor Intake Gasket	90	B-015-9043	Tank & Lid Ass'y
37	B-013-2984	Motor Cover	Items Not Illustrated -		
38	B-010-7041	Auto Load Ass'y (Inc. Key #89)	B-010-4446	Wiring Harness 1697	
39	B-013-2992	Belt Cover 1697	B-010-4451	Wiring Harness 1698,1698-1	
39	B-013-2993	Belt Cover 1698	B-010-2485	Large Clamp	
39	B-203-2991	Belt Cover 1698-1	B-010-2490	Small Clamp	
40	B-010-4053	Air Duct O-Ring	B-010-5912	Owners Manual 1697	
41	NLA	Long Air Duct	B-010-5925	Owners Manual 1698	
42	B-010-4056	Motor Gasket	B-010-5906	Owners Manual 1698-1	
43	B-010-5970	Motor Ass'y	B-013-9440	10" Clear Vinyl Tube	
44	B-010-7185	Pump Ass'y	B-013-9442	15" Clear Vinyl Tube	
45	B-010-0620	Pump Belt	B-013-9444	5" Clear Vinyl Tube	
45	BR-1020	Pump Belt	B-013-9446	28" Clear Vinyl Tube	
46	B-010-0621	Geared Brushroll Belt	B-013-9447	14" Vinyl Tube	
46	BR-1075	Geared Brushroll Belt	B-013-9448	32" Vinyl Tube	
47	B-015-8001	Barbed "T" Connector			
48	B-014-0710	Autoload Receiver			
49	B-013-5580	Handle Release Pedal			
50	B-010-0170	Axle			
51	B-013-9754	Wheel			

NLA = NO LONGER AVAILABLE