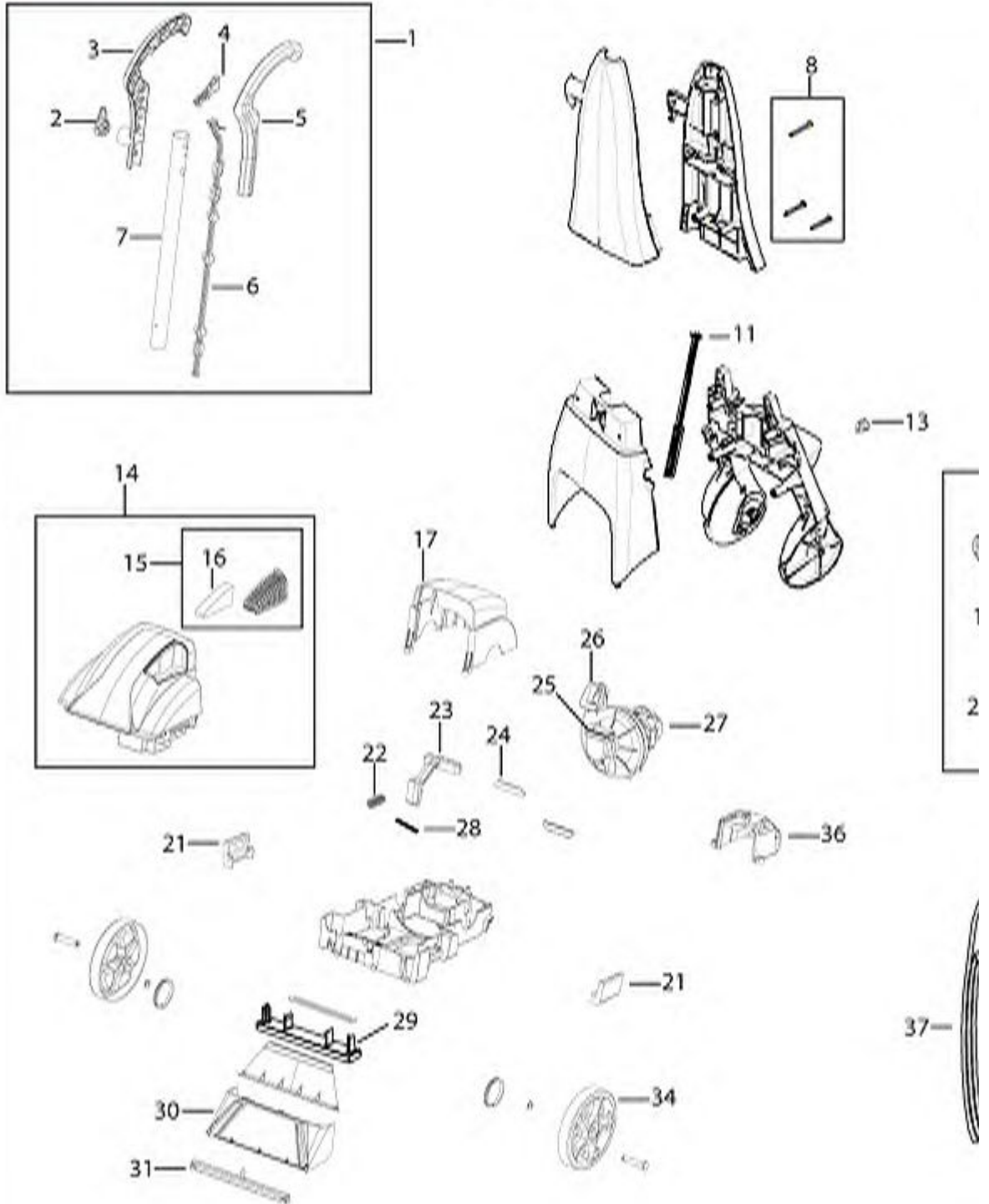


- 26 [6037825](#) MOTOR
OUTLET
GASKET REPL
COMPLETE
- 27 [6037807](#) MTR
ASSEMBLY
REPL
- 28 [2041115](#) Metal Detent
Dowel
- 29 [2035602](#) Brush
Orange/White
FRONT
NOZZLE
ASSEMBLY
REPL
- 30 [6037804](#)
- 31 [2035615](#) Spray Bar -
Orange
- 34 [6037802](#) WHEELS
REPL
- 36 [2041113](#) Motor Cover
- 37 [6037803](#) POWER
CORD REPL
- xx [2035600](#) User Guide



QUICKSTEAMER

Model 1960



Group Name:

Deep Cleaners

Category:

Upright Deep Cleaners

Model No. :

19603

Model Desc:

QUICKSTEAMER

Key	Part No.	Part Desc.	Price
01	2035601	Handle Assy	\$4.82
02	2041107	Quick Cord Wrap Cap	\$1.12
03	2041104	Handle - RT Side	\$1.04
04	2041103	Trigger	\$0.22
05	2041108	Handle - LT Side	\$1.04
06	2041106	Push Rod - Upper	\$0.99
07	6037806	TUBING REPL 25"	\$1.44
08	2035616	Handle Screw Kit (2+1)	\$0.75
09	2041106	Push Rod - Upper	\$0.99
10	2041126	Receiver Assy	\$1.37
11	2035614	Push Rod - Lower	\$0.75
13	2041128	On/Off Switch	\$1.24
14	2035604	Dirty Water Tank - Dusk	\$10.73
14	6037816	DIRTY WATER TANK TEAL REPL	\$8.44
15	2035609	Exhaust Vent w/ Filter - Dusk	\$1.76
15	6037823	EXHAUST VENT W/FILTER GREEN	\$1.76
16	6037824	FOAM FILTER 1950 1-PACK	\$1.16
17	2041128	On/Off Switch	\$1.24
18	2035603	Clean Water Tank - Dusk	\$5.01
18	6037813	CLEAN WATER TANK REPL	\$5.01
19	2041112	Formula Measuring Cup	\$0.71
20	2041111	Cap & Insert Assy	\$1.51
21	6037820	TANK LATCH- 2 PCS(L & R)	\$1.12
23	2041114	Detent Lever	\$1.10
24	0106357	GASKET MOTOR REAR 1950 RBO	\$0.28
25	2041122	Motor Intake Gasket	\$0.22