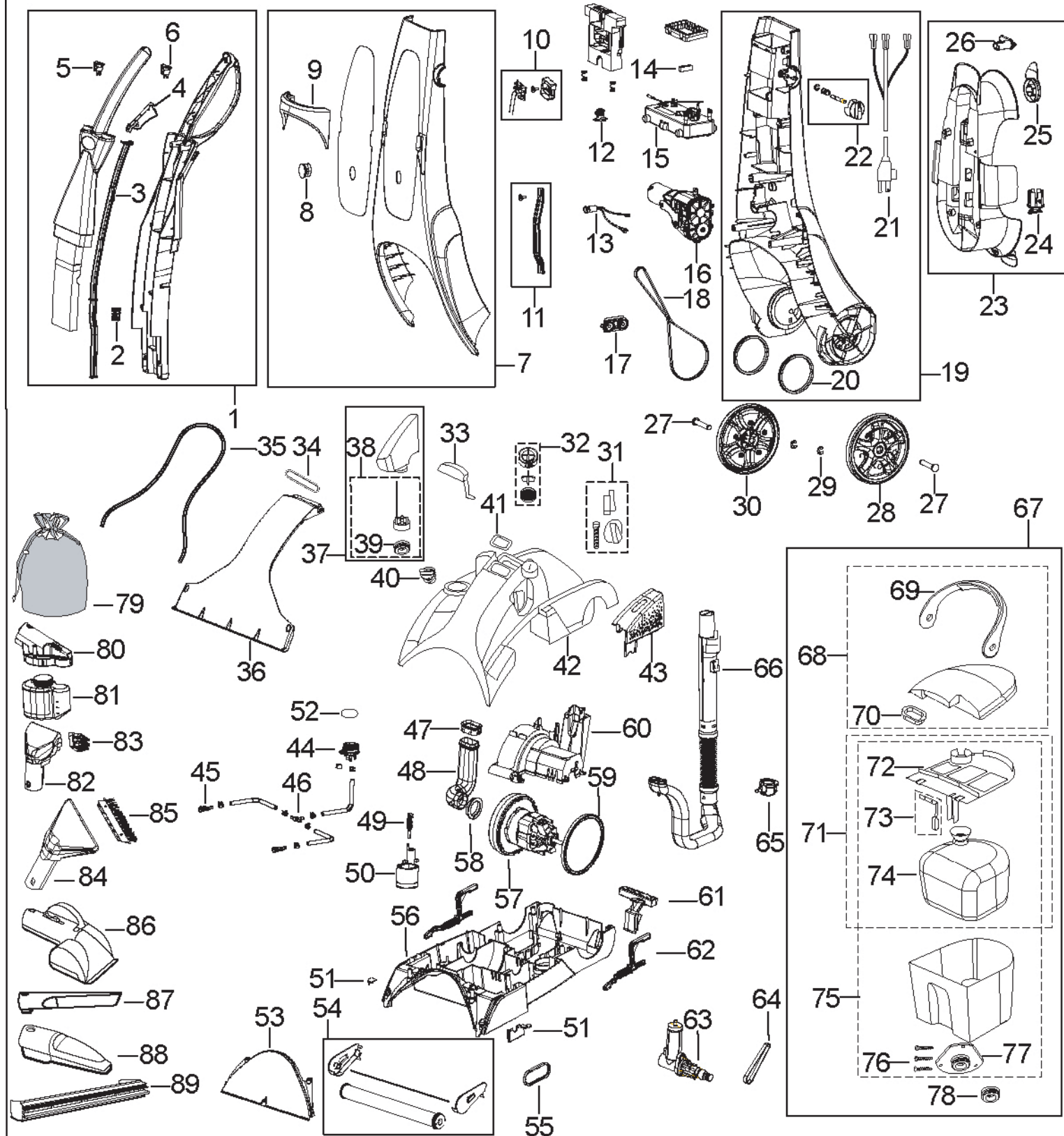




Upright Deep Cleaner

7950 ProHeat® Self Propelled Series



UPRIGHT DEEP CLEANER

7950 ProHeat® Self Propelled Series

KEY	PART NO	DESCRIPTION	KEY	PART NO	DESCRIPTION
1	B-214-4496	UPPER HANDLE ASSY - BLACK METALLIC	46	B-210-2602	T CONNECTOR
1	B-214-4495	UPPER HANDLE ASSY - BLUE METALLIC	47	B-210-4050	GASKET - SHORT AIR DUCT
2	B-210-8422	SPRING - PUSH ROD	48	B-210-3161	SHORT AIR DUCT
3	B-214-7511	PUSH ROD	49	B-210-8722	AUTOMIX PISTON w/ O-RING
4	B-213-9168	TRIGGER	50	B-210-0107	AUTOMIX ASSY
5	B-210-7210	SWITCH - HEATER	51	B-555-9113	RETAINERS RT & LT
6	B-210-7221	SWITCH - POWER	52	B-210-6214	O-RING - FLOW INDICATOR
7	B-214-4328	LWR HNDL FRONT - BLACK METALLIC	53	B-214-9851	CLEARVIEW WINDOW >02165
7	B-214-4306	LWR HNDL FRONT - BLUE METALLIC	54	B-210-1128	BRUSH / PIVOT ARM ASSY - 6 Row
8	B-210-7202	LENS - LIGHT	55	B-015-0621	BRUSH BELT
9	B-213-4330	CARRY HANDLE - BLACK METALLIC	56	B-215-1171	BASE w/WINDOW & 6 ROW ORG BRUSH
10	B-210-1082	CIRCUIT BOARD	57	B-017-5972	VACUUM MOTOR
11	B-210-5602	LINKAGE	58	B-210-4051	GASKET - MOTOR INTAKE
12	B-210-9592	TRIGGER VALVE ASSY	59	B-210-4056	MOTOR GASKET
13	B-210-5607	LIGHT ASSEMBLY	60	B-213-2907	MOTOR COVER
14	B-210-8550	HEATER SUPPORT	61	B-555-9102	HANDLE RELEASE PEDAL
15	B-210-4513	HEATER (700watt)	62	B-200-0010	ELEVATOR LEVERS - RT & LT
16	B-210-5052	TRANSMISSION	63	B-210-7181	PUMP ASSY
17	B-210-6683	IDLER ASSEMBLY	64	B-215-0628	PUMP BELT
18	B-210-0605	DRIVE BELT	65	B-214-0710	AUTOLOAD RECEIVER
19	B-214-4327	LWR HNDL BACK ASSY - BLACK METALLIC	66	B-215-3163	HOSE & GRIP ASSY
19	B-214-4309	LWR HNDL BACK ASSY - BLUE METALLIC	67	B-015-9043	TANK ASSY - COMPLETE
20	B-210-1256	BUSHING WHEEL	68	B-015-4439	TANK TOP ASSY w/ HANDLE
21	B-210-2895	CORDSET 33' 3-WIRE 17GA	69	B-203-4435	TANK HANDLE
22	B-213-0121	NEUTRAL KNOB ASSEMBLY	70	B-213-3501	LINT SCREEN
23	B-213-6776	HOSE RACK ASSEMBLY	71	B-214-0213	BAFFLE & BLADDER ASSY
24	B-213-1524	TOOL HOLDER	72	B-213-0213	TANK BAFFLE & FLOAT ASSY
25	B-213-1154	CORD WRAP	73	B-214-0325	FLOAT ASSY
26	B-213-1527	WAND CLIP	74	B-210-0315	BLADDER
27	B-210-0170	AXLE	75	B-015-9041	TANK/BAFFLE/BLADDER/FLOAT
28	B-214-9774	WHEEL - OVERMOLDED w/ GEAR	76	B-280-7075	SCREW #6 x 1/2"
29	B-210-6215	E-RING - WHEEL AXLE	77	B-210-7041	AUTOLOAD ASSY
30	B-210-9774	WHEEL - OVERMOLDED	78	B-210-6241	AUTOLOAD OVERSEAL
31	B-214-5170	DIVERTER KNOB ASSY - GREY	79	B-210-3040	MESH BAG
32	B-555-6503	FLOW IND. ASSY - CAP, SPINNER, ROTOR	80	B-215-2152	CARPET PROTECTANT SPRAYER ASSY
33	B-213-6988	DIVERTER - MED COOL GREY	81	B-0464	CARPET PROTECTANT CARTRIDGE 4/CS
34	B-210-4052	SEAL - OVAL	82	B-215-9155	TUFF STAIN TOOL 3" WIDE
35	B-210-3418	EXTRUDED GASKET - .136" x 32"	83	B-214-9155	BRUSH FOR 3" TOOL
36	B-214-9871	WINDOW NOZZLE ASSY	84	B-210-9213	UPH TOOL 4"
37	B-210-1785	SHAMPOO BOTTLE ASSY	85	B-203-0966	BRUSH FOR 4" TOOL
38	B-210-1795	CAP ASSEMBLY - SHAMPOO BOTTLE	86	B-210-1197	TURBO BRUSH ASSY
39	B-210-6241	AUTOLOAD OVERSEAL	87	B-210-9148	CREVICE TOOL
40	B-210-5108	AUTOMIX KNOB GREY	88	B-214-9142	PRE-TREAT WAND
41	B-211-4054	DIVERTER GASKET	89	B-214-9131	BARE FLOOR ATTACHMENT
42	B-214-5037	MAIN HOUSING - BLACK METALLIC	xx	B-210-4448	WIRE HARNESS - UPPER & LOWER
42	B-214-5113	MAIN HOUSING - BLUE METALLIC	xx	2109903	HARDWARE KIT - #8 x 1/2" (6pcs)
43	B-213-2999	BELT COVER - BLACK METALLIC	xx	B-214-1782	DRAIN CAP - RECOVERY TANK
43	B-213-2922	BELT COVER - BLUE METALLIC	xx	2807149	SCREW KIT - LINKAGE - (3 pk) - #8-11x.5"
44	B-210-0489	FLOW INDICATOR BASE	xx	3105835	USER'S GUIDE - CANADA
45	B-210-6107	SPRAY TIP	xx	2105839	USER'S GUIDE - UNITED STATES