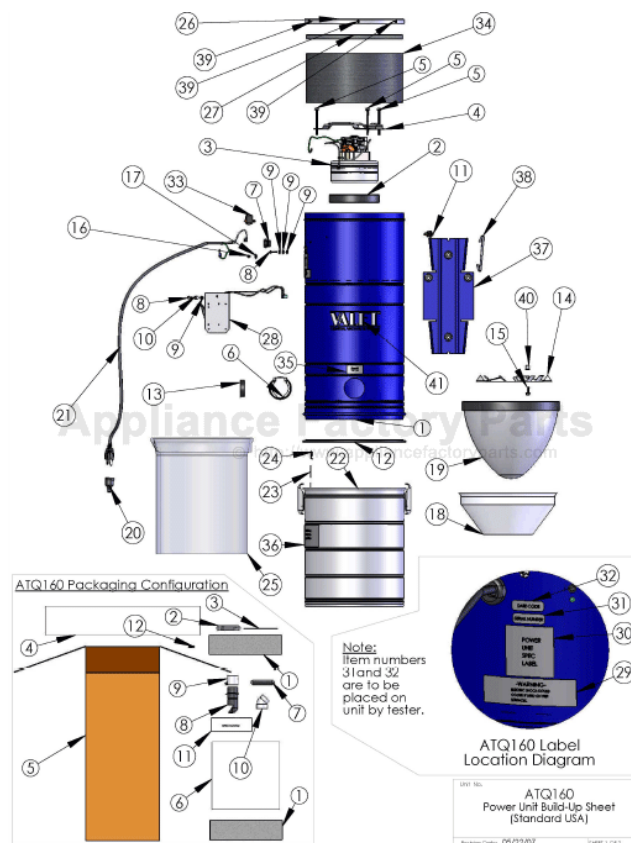


CIRRUS CB50 Owner's Manual

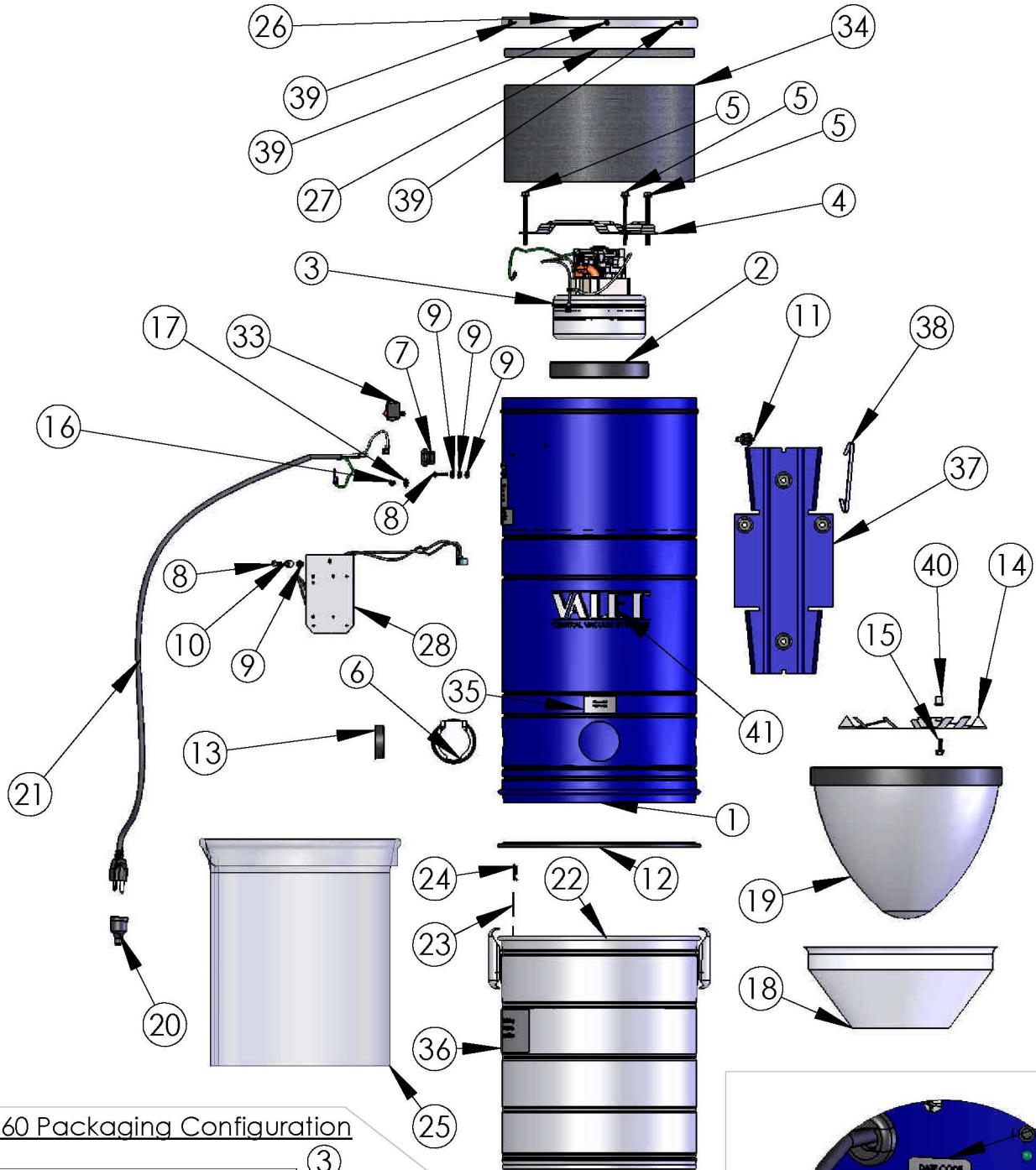
[Shop genuine replacement parts for CIRRUS CB50](#)



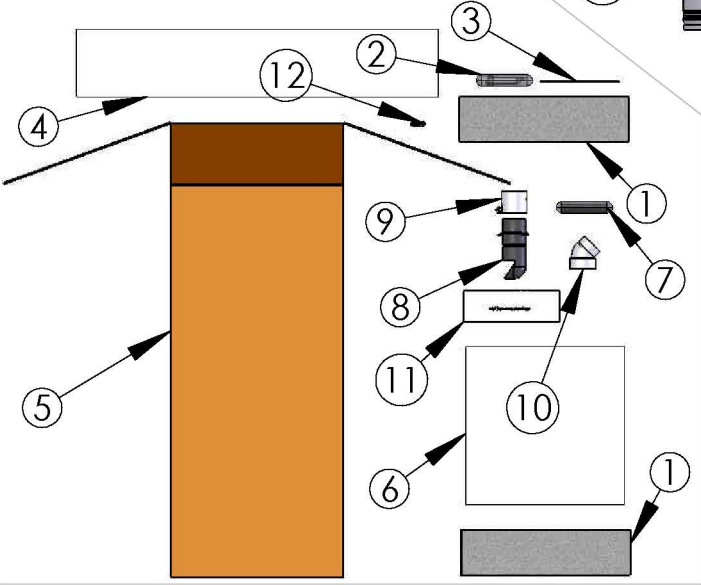
[Find Your CIRRUS Vacuum Cleaner Parts - Select From 13 Models](#)

----- Manual continues below -----

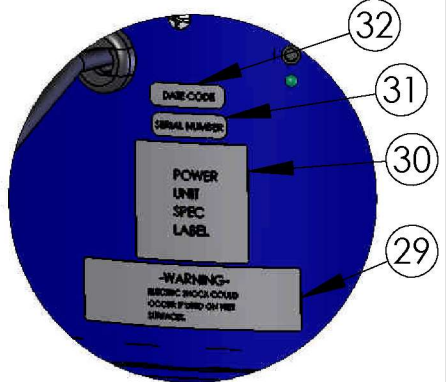
ATQ160 Build-Up Configuration



ATQ160 Packaging Configuration



Note:
Item numbers
31 and 32
are to be
placed on
unit by tester.



ATQ160 Label Location Diagram

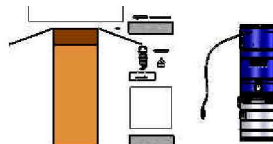
Unit No. ATQ160
Power Unit Build-Up Sheet
(Standard USA)

ATQ160 Built-Up Configuration

ATQ160 Power Unit Build-Up Sheet			
ITEM NO.	PART NUMBER	DESCRIPTION	QTY.
1	SR101B	Main Canister Assembly - Blue	1
2	P127B	5.7" "L" Shaped Motor Gasket	1
3	MB119800	High Air Watt 2-Stage 5.7" Flow-Thru Motor	1
4	P3512B	Motor Mount Bracket with Strap	1
5	25C300WLS5ZZ	1/4" x 20 x 3" Long Motor Bolt	1
6	5584	Power Unit Utility Valve (Valve, Grommet, and Collar)	1
7	SR7W2	Strain Relief Plug	1
8	10C75MXRZ	10-24 x 3/4" Phillips Round Head	1
9	10CKEPZ	10-24 Keeps Nut	1
10	SS103Z	3/8" Spacer for PC Board	1
11	RCP01	Remote Control Plug with Wire Connectors	1
12	P12512B	Bottom Dirt Canister Gasket	1
13	PF206	Vacuum Cap	1
14	PP101	Bag Protector Plate	1
15	25C75WLSZZ	1/4" x 20 x 3/4" Long Motor Bolt	1
16	HD120LED	LED Panel Holder	1
17	PN120LED	Zinc Pushnut	1
18	P12531	Plastic 12" Cone	1
19	RB18W	Inverted Bag	1
20	CB24	Low Voltage Boot Cover	1
21	J10364	120 Volt US Power Cord	1
22	P1102AC	14" Tall Dirt Canister with Air Channel and Latches - Chrome	1
23	BCL125	Bag Clip Label	1
24	FANNY8129D	Bag Clip	1
25	PB4M	4 Mil Plastic Bag for Dirt Canister	1
26	P75E3	Crown Cover - Chrome	1
27	FM2195	12" Foam Disc for Lid	1
28	PC120LE	120 Volt Avnon PC Board with Mounting Plate and Standoffs	1
29	WARNINGELECSHZ	Electrical Shock Warning Label	1
30	SPECLABELZ	Power Unit Spec Label	1
31	SERIALZ	Serial Number Label	1
32	DATECODEZ	Date Code Label	1
33	RA911VBBV	Rocker Switch for On/Off Control of Power Unit	1
34	FM2194	Foam for Motor Housing 1/2" x 6" x 36"	1
35	PERMANENTFILTEZ	Permanent Filter Label	1
36	PBI125	Plastic Bag Instruction Label	1
37	P2452B	Wall Hanger Bracket with Grommets - Blue	1
38	P2453	Hanger Bracket Holding Strap	1
39	6C42UXFO	#6 x 7/16" Phil. TEK Screw	1
40	91145A165	Nylon Spacer for Bag Protector Plate	1
41	VLCVS	Valet Unit Label	1

ATQ160 Packing Build-Up Sheet			
ITEM NO.	PART NUMBER	DESCRIPTION	QTY.
1	FBP2	Foam Pad for S2000	2
2	UMK4	Unit Mounting Kit	1
3	L653NP	Valet Power Unit Owners Manual	1
4	25A2532	Protective Wrap for 12" Cans	1
5	BXDC1200	DC1200 NO LOGO Box	1
6	25A2514	Protective Sheet for 12" Can Tops	1
7	PB4MK	Package of 4 Plastic Bags	1
8	BIF125	Long Intake Stem	1
9	PF248	Clamp Coupling	1
10	PF242W	45 Degree Street Elbow	1
11	L6182	Inlet Stem Instruction Sheet	1
12	SERIALZ	Serial Number Label	1
13	ATQ160STAMP	ATQ160 Model Number to be Stamped on Box Top	1

Note:
Item numbers 31 and 32
are to be placed on unit by tester.



Unit No.

ATQ160
Power Unit Build-Up Sheet
(Standard USA)

Revision Date: 05/22/07

SHEET 2 OF 2