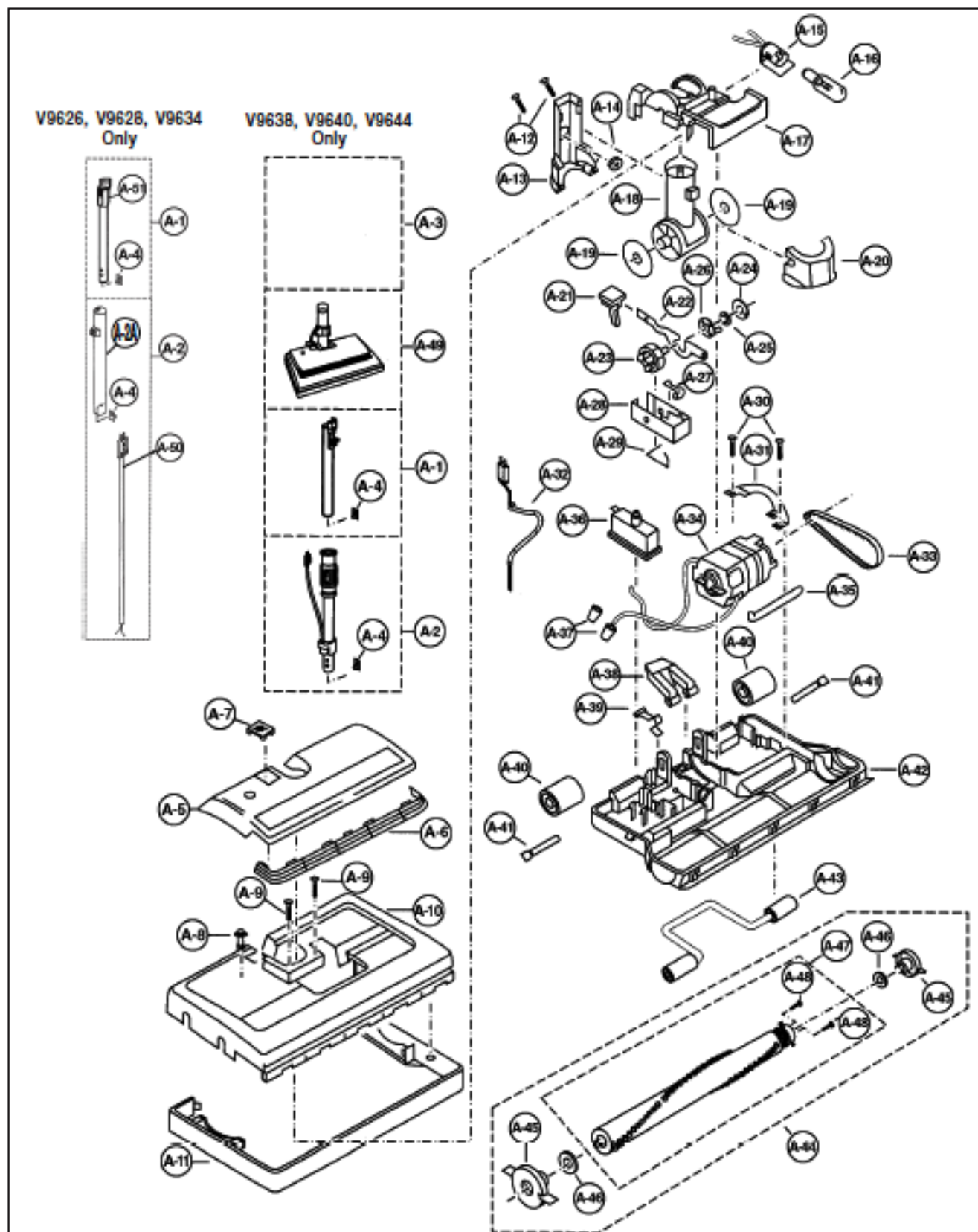


Most power Nozzle Parts listed here should fit Cen-Tec model # CT14L



# Most power Nozzle Parts listed here should fit Cen-Tec model # CT14L

## PARTS LIST (POWER NOZZLE)

KEY	PART NO.	DESCRIPTION	KEY	PART NO.	DESCRIPTION
A-1	P-50043	Wand, Upper V9626, V9634	A-21	P-48AMGZV06	Pad, Foot Pedal
A-1	P-50046	Wand, Upper V9628	A-22	P-747-287	Lever, Indicator
A-1	P-50047	Wand, Upper V9638	A-23	P-725-725	Cam, Indicator
A-1	P-50048	Wand, Upper V9640	A-24	P-722-909	Washer, Thrust
A-1	P-50070	Wand, Upper V9644	A-25	P-725-635	Washer
A-2A	P-50051	Wand, Lower V9626, V9628, V9634	A-26	P-722-955	Catch, Indexing
A-2	P-50052	Wand, Lower With Cord V9638, V9644	A-27	P-742-016	Ratchet, Catch
A-2	P-50053	Wand, Lower V9640	A-28	P-742-015	Indicator Block
A-3	P-40474	Hose Ass'y V9626, V9634	A-29	P-725-775	Spring, Assist
A-3	P-40473	Hose Ass'y V9628, V9638	A-30	P-681-297	Screw (Motor Bridge)
A-3	P-40475	Hose Ass'y V9640	A-31	P-705-093	Bridge, Motor
A-3	P-40476	Hose Ass'y V9644	A-32	P-36017	Lead Wire "A" Unit V9638, V9640, V9644
A-4	P-725-419	Lock, Spring Wand	A-33	P-MC320B	Geared Belt Type CB-5 V9626, V9628, V9638, V9640
A-5	P-24HBTWZBUD	Power Head Cover V9626	A-33	KER-1075	Geared Belt Type CB-5 V9626, V9628, V9638, V9640
A-5	P-24HBMVZMU9	Power Head Cover V9628, V9638	A-33	P-MC330B	Serpentine Belt Type CB-6 V9634, V9644
A-5	P-24HCHJZC01	Power Head Cover V9634	A-34	P-60518	Motor, Nozzle (Geared) V9626, V9628, V9638, V9640
A-5	P-24HCBWZCU1	Power Head Cover V9640	A-34	P-60519	Motor, Nozzle V9634, V9644 Serpentine
A-5	P-24HCHKZR0K	Power Head Cover V9644	A-35	P-742-002	Spring, Motor Adjust
A-6	P-744-119	Lens, Light Cover	A-36	P-742-332	Overload Protector
A-7	P-744-237	Lens, Height Adjustment	A-37	SS-3270	Connector, Wire
A-8	P-744-280	Extension Button V9626, V9634	A-38	P-73723	Release, Handle
A-8	P-73452	Extension Button V9628, V9638 V9640, V9644	A-39	P-742-013	Lifter
A-9	P-681-550	Screw, Nozzle Cover	A-40	P-01CAKZZV06	Roller, Rear
A-10	P-73180	Nozzle Cover V9626	A-41	P-742-006	Axle, Rear
A-10	P-73156	Nozzle Cover V9628, V9638	A-42	P-72150	Base V9626, V9628, V9638, V9640
A-10	P-73155	Nozzle Cover V9640, V9634	A-42	P-72151	Base V9634, V9644
A-10	P-73154	Nozzle Cover V9644	A-43	P-744-029	Axle Assembly, Front
A-11	P-74065	Furniture Guard V9628, V9638, V9644	A-44	P-20017	Brushroll V9626 Geared
A-11	P-10ASRZV07	Furniture Guard V9626, V9640, V9634	A-44	P-20087	Brushroll V9628, V9638, V9640 Geared
A-12	P-XTN4+24BFY	Wand Release Cover Screw V9638, V9640, V9644	A-44	P-20086	Brushroll V9634, V9644 Serpentine W/Round End Caps W/Wings
A-13	P-75552	Rear Cover, Wand Release Button V9638, V9640, V9644	A-45	P-20538	Bearing/Housing Assembly
A-14	P-13DABFZV0G	Button, Wand Release V9638, V9640, V9644	A-46	P-681-424	Washer
A-15	P-414-8683	Socket, Bulb V9626	A-47	P-415-6360	Brushroll Core V9626
A-15	P-93HBNXZ000	Socket, Bulb V9628, V9634, V9638, V9640, V9644	A-47	P-85RBMVZ020	Brushroll Core V9628, V9638, V9640
A-16	FA-3515	Bulb, Headlight	A-48	P-681-605	Screw, (End Brush)
A-17	P-25QMGZB0D	Swivel Cap V9626	A-49	P-50XCBVZB0D	Power Nozzle Assembly V9626
A-17	P-25QMGZM09	Swivel Cap V9628, V9638	A-49	P-50XBMVZM09	Power Nozzle Assembly V9628, V9638
A-17	P-25QMGZC01	Swivel Cap V9640	A-49	P-50XCHJZC01	Power Nozzle Assembly V9634
A-17	P-25QMGZV06	Swivel Cap V9634, V9644	A-49	P-50XCBWZC01	Power Nozzle Assembly V9640
A-18	P-415-5049	Swivel V9626, V9628, V9634	A-49	P-50XCHKZR0K	Power Nozzle Assembly V9644
A-18	P-72423	Swivel V9638, V9640, V9644	A-50	P-30053	Cord Unit V9626, V9634
A-19	P-742-019	Seal, Swivel	A-50	P-30054	Cord Unit V9628
A-20	P-75547	Front Cover V9638, V9640, V9644	A-51	P-73925	Quick Release V9628, V9638