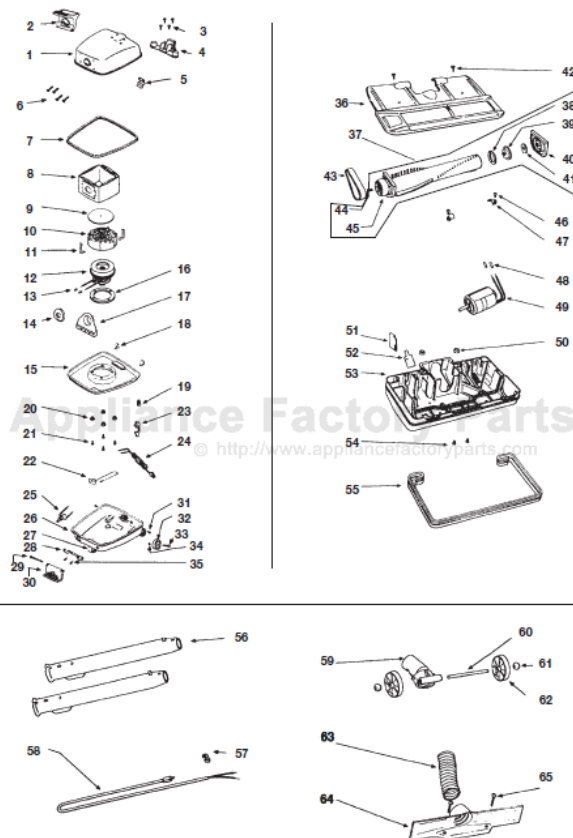


This Owner's Manual is provided and hosted by [Appliance Factory Parts](http://www.appliancefactoryparts.com).



Eureka 1510A Owner's Manual

[Shop genuine replacement parts for Eureka 1510A](#)



[Find Your Eureka Vacuum Cleaner Parts - Select From 855 Models](#)

----- Manual continues below part list -----

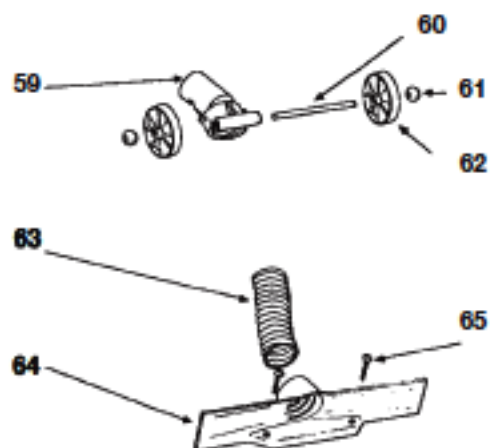
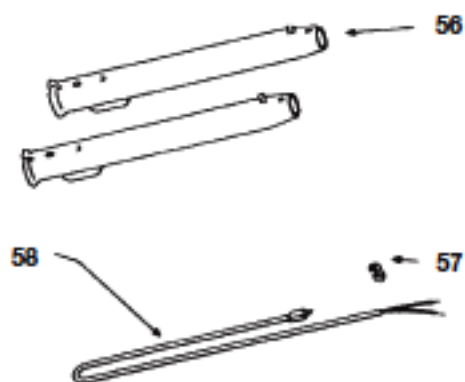
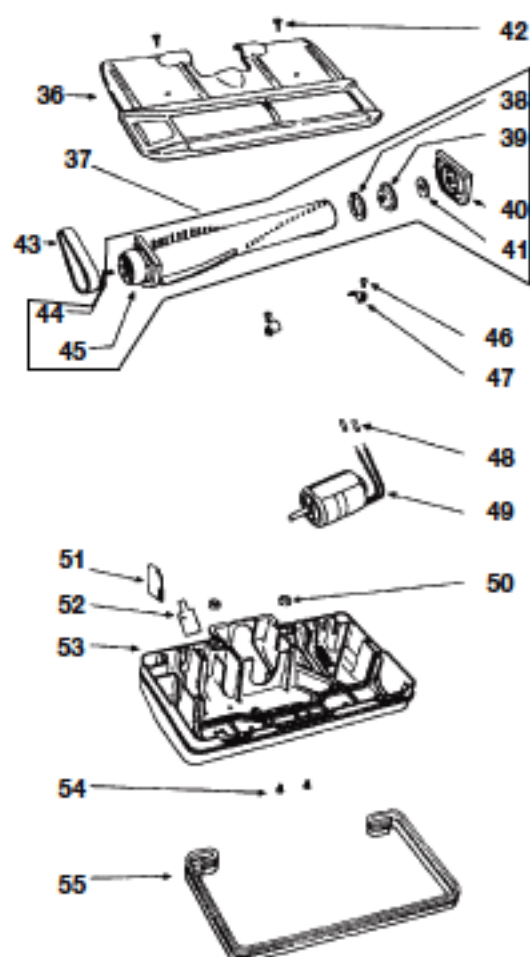
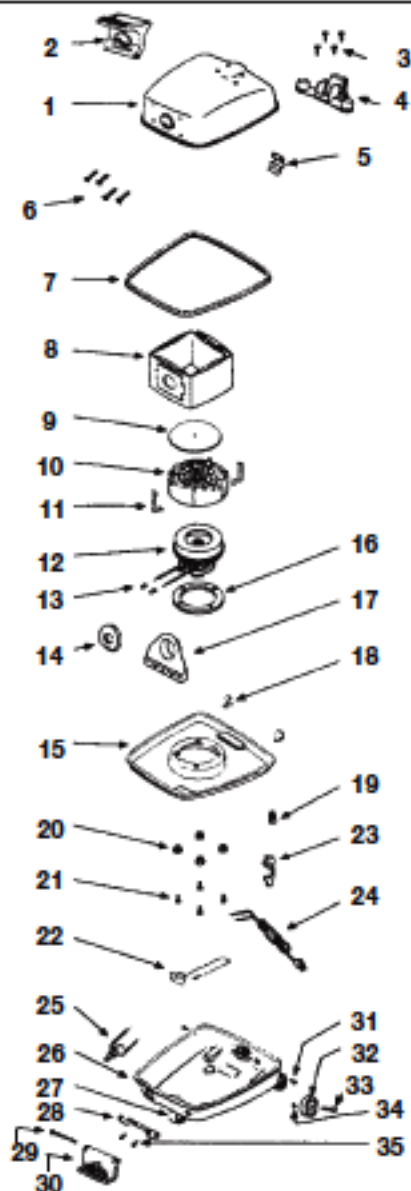
Available Replacement Parts for Eureka 1510A

ER-1050	BELT, EUREKA 1 PACK
E-52323	EUREKA OEM H BAG 3 PACK
ER-6050	MOTOR ASSEMBLY
Fa-3400	switch â€“ step on 1 Inch Leads.

EUREKA Original & Replacement

POWER TEAM CANISTER

Model 1510A Shown



Original & Replacement

EUREKA

POWER TEAM CANISTER
Model 1510A Shown

KEY	PART NO.	DESCRIPTION	KEY	PART NO.	DESCRIPTION
1	E-55273	Upper Shell & Latch Ass'y	37	NLA	Brushroll Ass'y
2	E-13499-1	Handle			Wood W/Large Pulley**
3	E-EW285-6T5C	Screw	37	E-53408	Brushroll Ass'y
4	E-13506-2	Tool Support			Wood W/Small Pulley
5	E-35564	Latch Spring	37	E-53348-1	Brushroll Ass'y
6	E-EW2858T6CC	Handle Screw			Wood W/Small Pulley
7	E-26014-1	Furniture Guard	37	ER-2030	Brushroll Ass'y
8	E-52323	Disp. Bag Style H 3 Pk			Wood W/Small Pulley
8	ER-1408	Disp. Bag Style H 3 Pk	38	E-49101	**Felt Washer
9	E-34281	Filter Disc	39	E-36412	**Felt Retainer
9	ER-1800	Filter, Foam	40	E-53282	**Bearing Ass'y Repair Kit
10	E-24128A	Filter Support	41	E-49591	**Flat Washer
10	COR-1800	Filter Support, W/Filter	42	E-EW305-8P7N	Screw
11	E-48756-1	Clip	43	E-52201	Drive Belt
12	E-54336	Motor Ass'y	43	ER-1050	Drive Belt
12	GS-041	Motor Ass'y	44	E-49175	**Locknut
13	E-EW22-25	Wire Nut	45	E-37114	**Pulley
13	SS-3270	Wire Nut	46	E-EW312-88C	Plate Screw
14	E-55056	Bag Gasket	47	E-48332	Retainer Plate
14	NLA	Bag Gasket, Split Ring	48	E-EW22-17	Wire Nut
15	E-11862A	Motor Mounting Plate	48	SS-3270	Wire Nut
16	E-33295A	Motor Mount Ring	49	E-52314-2	Motor
17	E-26011	Bag Support	49	ER-6050	Motor
18	E-34562	Locator	50	E-49050	On-Sert
19	E-47922	Wire Clip	51	E-49110A	Belt Guard
20	E-44226	Motor Mounting Bushing	52	E-36680	Grounding Cover
21	E-46106A	Motor Mounting Screw	53	NLA	Housing Ass'y*
22	E-48600-1	Receptacle Ass'y			*Name Plate
23	E-43814-6	Strain Relief Bushing	54	E-EW110-8P4C	Motor Screw
23	SS-3265	Strain Relief Bushing	55	E-36322A-2	Furniture Guard
24	E-36528-3	Supply Cord & Plug Ass'y	56	E-36879-2	Wand
24	NLA	Supply Cord 30 Ft.	56	FA-5001	Wand
24	NLA	Supply Cord 20 Ft.			FA-3210 Cord Strap (not illustrated)
25	E-25802-3	Push Switch	57	E-55053-1	Strain Relief Bushing
25	FA-3400	Push Switch	57	SS-3265	Strain Relief Bushing
26	E-55408-4	Lower Shell & Wheel Ass'y	58	E-35970-5	Cord
27	E-48872-1	Front Caster Ass'y	58	ER-3055	Cord
28	E-37028	Hinge Bracket	59	NLA	Handle Socket
29	E-35845-1	Pin	60	E-48334	Axle
30	E-24766-4	Switch Pedal	61	E-48336	Axle Bearing
31	E-48624	Locator Screw	62	E-36555-1	Wheel
32	E-34169-9	Rear Wheel	63	E-25789-2	Hose 5"
33	E-46842	Pin	63	ER-7200	Hose 5"
34	E-EW181-5C	Cotter Pin	64	E-12578B-1	Inlet Divider
35	E-48624	Bracket Screw	65	E-EW312-8-8C	Screw
36	E-25788	Sole Plate Ass'y*			
	E-25903	*Sole Plate Gasket			

NLA = No Longer Available