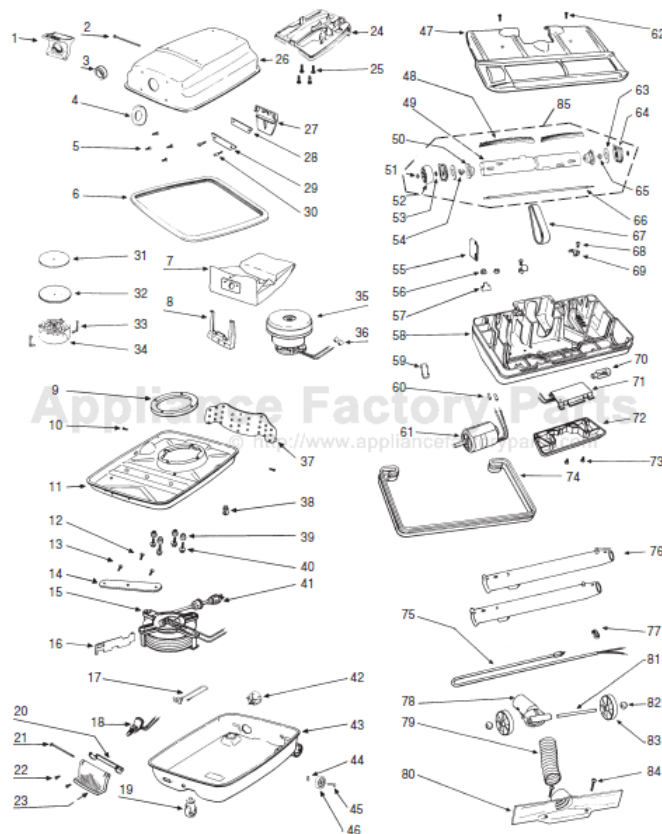


# Eureka 1756A Owner's Manual

[Shop genuine replacement parts for Eureka 1756A](#)



[Find Your Eureka Vacuum Cleaner Parts - Select From 855 Models](#)

----- Manual continues below part list -----

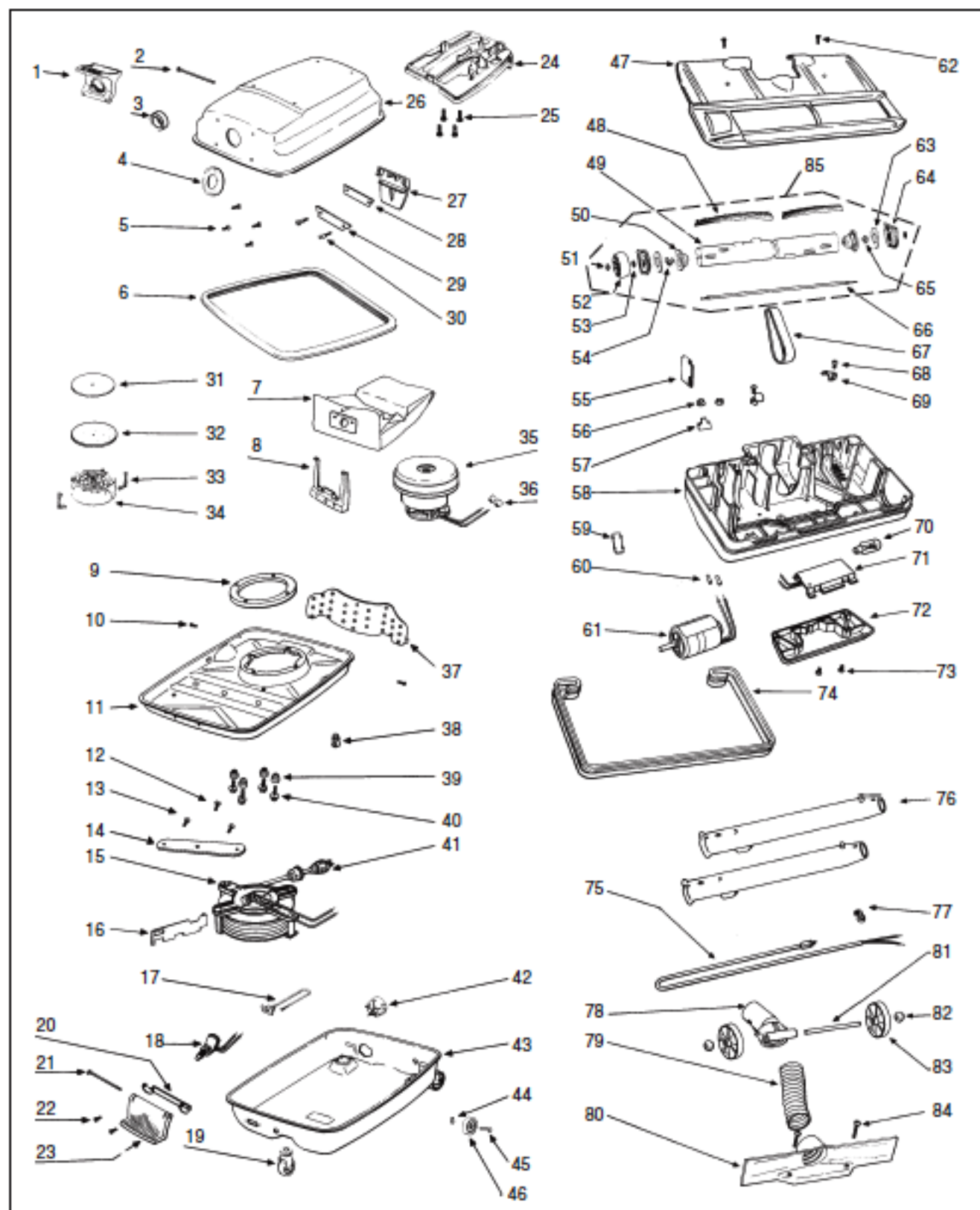
## Available Replacement Parts for Eureka 1756A

|                         |                                   |
|-------------------------|-----------------------------------|
| <a href="#">ER-1050</a> | BELT, EUREKA 1 PACK               |
| <a href="#">E-52015</a> | FILTER, DISK , 15PK               |
| <a href="#">FA-3515</a> | LAMP T4840                        |
| <a href="#">ER-6050</a> | MOTOR ASSEMBLY                    |
| <a href="#">Fa-3400</a> | switch â€“ step on 1 Inch Leads.  |
| <a href="#">ER-1402</a> | EUREKA B+S ENV VACUUM BAGS (3 PK) |

# EUREKA Original & Replacement

## POWER TEAM CANISTER

Model 1756A Shown



# Original & Replacement **EUREKA**

## POWER TEAM CANISTER Model 1756A Shown

| KEY | PART NO.     | DESCRIPTION                 | KEY | PART NO.      | DESCRIPTION               |
|-----|--------------|-----------------------------|-----|---------------|---------------------------|
| 1   | NLA          | Latch, Top Housing          | 48  | E-52282-3     | Brush Strip, Pair         |
| 2   | E-35845-2    | Hinge Pin, Most Canisters   | 48  | ER-2210       | Brush Strip, Pair         |
| 3   | NLA          | Hinge Gasket                | 49  | E-13236-3     | Brushroll Core VGII       |
| 4   | NLA          | Bag Gasket                  | 50  | NLA           | Use E-53282 Repair Kit    |
| 5   | E-EW2858T6C  | Handle Screw                | 51  | E-49175       | Lock Nut                  |
| 6   | E-23792-11   | Bumper, White               | 52  | E-37114       | Brushroll Pulley          |
| 7   | E-52329      | Paper Bag, Style B 3 Pk     | 53  | E-49898       | Washer, Steel             |
| 7   | ER-1402      | Paper Bag, Style B 3Pk      | 54  | E-53155       | Klipring                  |
| 8   | NLA          | Bag Holder                  | 55  | E-49110A      | Belt Guard                |
| 9   | E-37423      | Ring, Motor Mounting        | 56  | E-53424       | On-Sert                   |
| 10  | E-48624      | Screw                       | 57  | E-36680       | Grounding Cover           |
| 11  | NLA          | Motor Mounting Plate        | 58  | NLA           | Housing Ass'y             |
| 12  | E-EW12610TSC | Cord Reel Screw             |     | E-26377       | Nameplate (Not Shown)     |
| 13  | E-EW1268T6C  | Cord Reel Screw             | 59  | E-26028-1     | Belt Window               |
| 14  | E-35842A     | Cord Reel Barrier           | 60  | SS-3270       | Wire Nut                  |
| 15  | NLA          | 25' Cord Reel Ass'y         | 61  | E-52314-78    | Motor                     |
| 16  | E-26045      | Cord Reel Shield            | 61  | ER-6050       | Motor                     |
| 17  | E-53255-1    | Power Receptacle Ass'y      | 62  | E-53237-3     | Screw 10 Pk               |
| 18  | NLA          | Switch                      | 63  | E-49899       | Washer, Felt              |
| 18  | FA-3400      | Switch                      | 64  | NLA           | Use E-53282 Repair Kit    |
| 19  | NLA          | Front Castor                | 65  | E-53195       | Hex Nut                   |
| 20  | E-34567A     | Hinge Bracket               | 66  | NLA           | Use E-53282 Repair Kit    |
| 21  | E-35845-3    | Hinge Pin                   | 67  | E-52201       | Drive Belt 2 Pk           |
| 22  | E-53134      | Screw                       | 67  | ER-1050       | Drive Belt                |
| 23  | E-11740B-4   | Switch Pedal, Plastic White | 68  | E-EW312-8-8C  | Plate Screw               |
| 24  | E-54322-1    | Tool Support                | 69  | E-48332       | Retainer Plate            |
| 25  | E-EW3126T8C  | Screw                       | 70  | E-48815       | Bulb                      |
| 26  | NLA          | Upper Shell                 | 70  | FA-3515       | Bulb, 15 Watt             |
| 27  | NLA          | Latch, Plastic Beige        | 71  | E-37859-1     | Lamp Socket & Plate Ass'y |
| 28  | E-45779A     | Latch Gasket                | 72  | E-12839A-1    | Lens & Nameplate Ass'y    |
| 29  | E-34582      | Latch Spring                | 73  | E-EW110-8P4C  | Motor Screw               |
| 30  | E-53094      | Latch Screw                 | 74  | E-36237A-12   | Furniture Guard           |
| 31  | E-52015      | Filter Disc 15 Pk           | 75  | E-35970-10    | Cord                      |
| 32  | E-34679      | Foam Filter Disc            | 75  | NLA           | Cord                      |
| 32  | ER-1800      | Foam Filter Disc            | 76  | E-36593       | Wand                      |
| 33  | E-48756-1    | Clips                       | 76  | FA-5001       | Wand                      |
| 34  | E-24128A     | Filter Support              | 77  | E-53190-1     | Strain Relief Bushing     |
| 34  | COR-1810     | Filter Support              | 78  | NLA           | Handle Socket             |
| 35  | E-54401      | Motor Ass'y                 | 79  | E-25789-2     | Hose 5"                   |
| 35  | GS-041       | Motor Ass'y                 | 79  | ER-7200       | Hose 5"                   |
| 36  | SS-3270      | Wire Nut                    | 80  | NLA           | Inlet Divider             |
| 37  | E-13221      | Bag Retainer                | 81  | E-48334       | Axle                      |
| 38  | E-53120      | Wire Clip                   | 82  | E-48336       | Axle Bearing              |
| 39  | NLA          | Motor Mounting Brush        | 83  | E-36555-1     | Wheel                     |
| 40  | E-53103      | Motor Mounting Screw        | 84  | E-EW305-6P18C | Screw                     |
| 41  | E-53189      | Bushing, Cord               | 85  | E-53412-1     | Brushroll Ass'y VGII      |
| 42  | E-13206A-4   | Exhaust Shield              | 85  | ER-2030       | Brushroll Ass'y           |
| 43  | E-49747-16   | Lower Shell & Wheel Ass'y   |     | E-53282       | Wood w/Small Pulley       |
| 44  | E-53232-1    | Cotter Pin, Wheel Retainer  |     |               | Repair Kit, Brushroll     |
| 45  | NLA          | Pin                         |     |               | Includes: Shaft,          |
| 46  | E-25392-5    | Rear Wheel                  |     |               | End Caps,                 |
| 47  | E-25895      | Sole Plate Ass'y*           |     |               | Bearing & Retainer Ass'y  |
|     | E-25903      | * Sole Plate Gasket         |     |               |                           |

NLA = No Longer Available