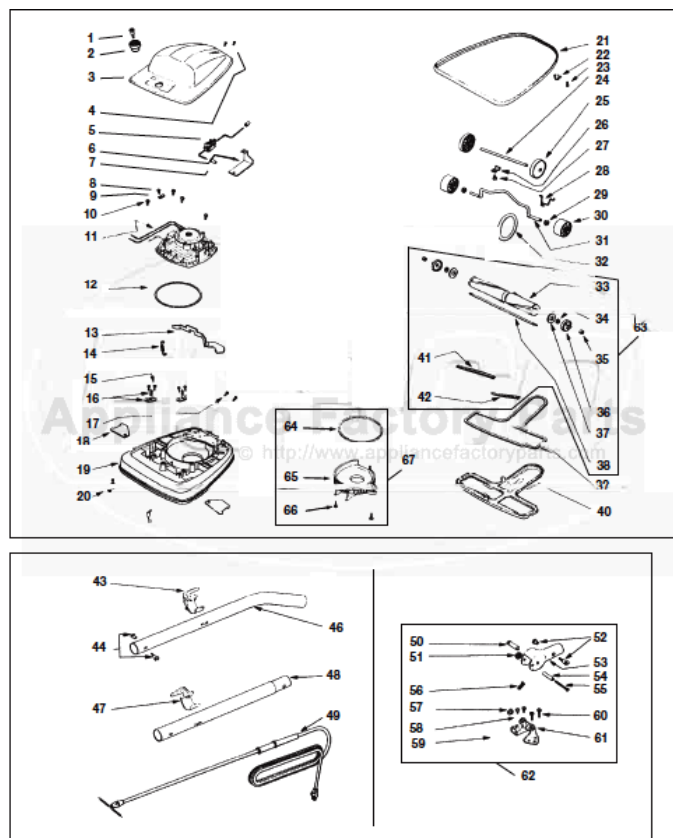


This Owner's Manual is provided and hosted by [Appliance Factory Parts](http://www.appliancefactoryparts.com).



Eureka 2010XRB Owner's Manual

[Shop genuine replacement parts for Eureka 2010XRB](#)



[Find Your Eureka Vacuum Cleaner Parts - Select From 855 Models](#)

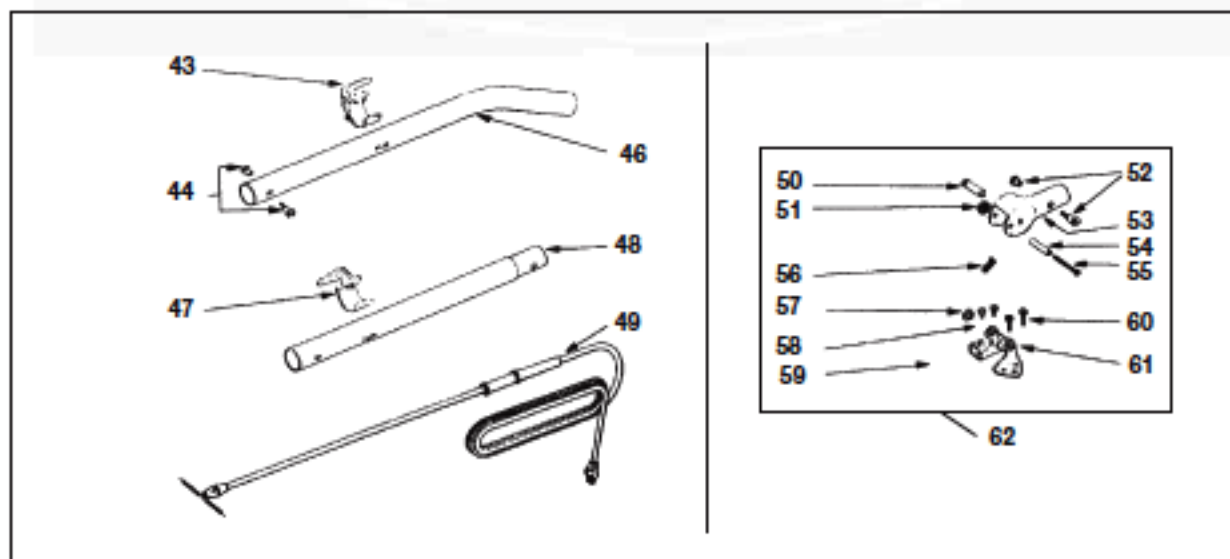
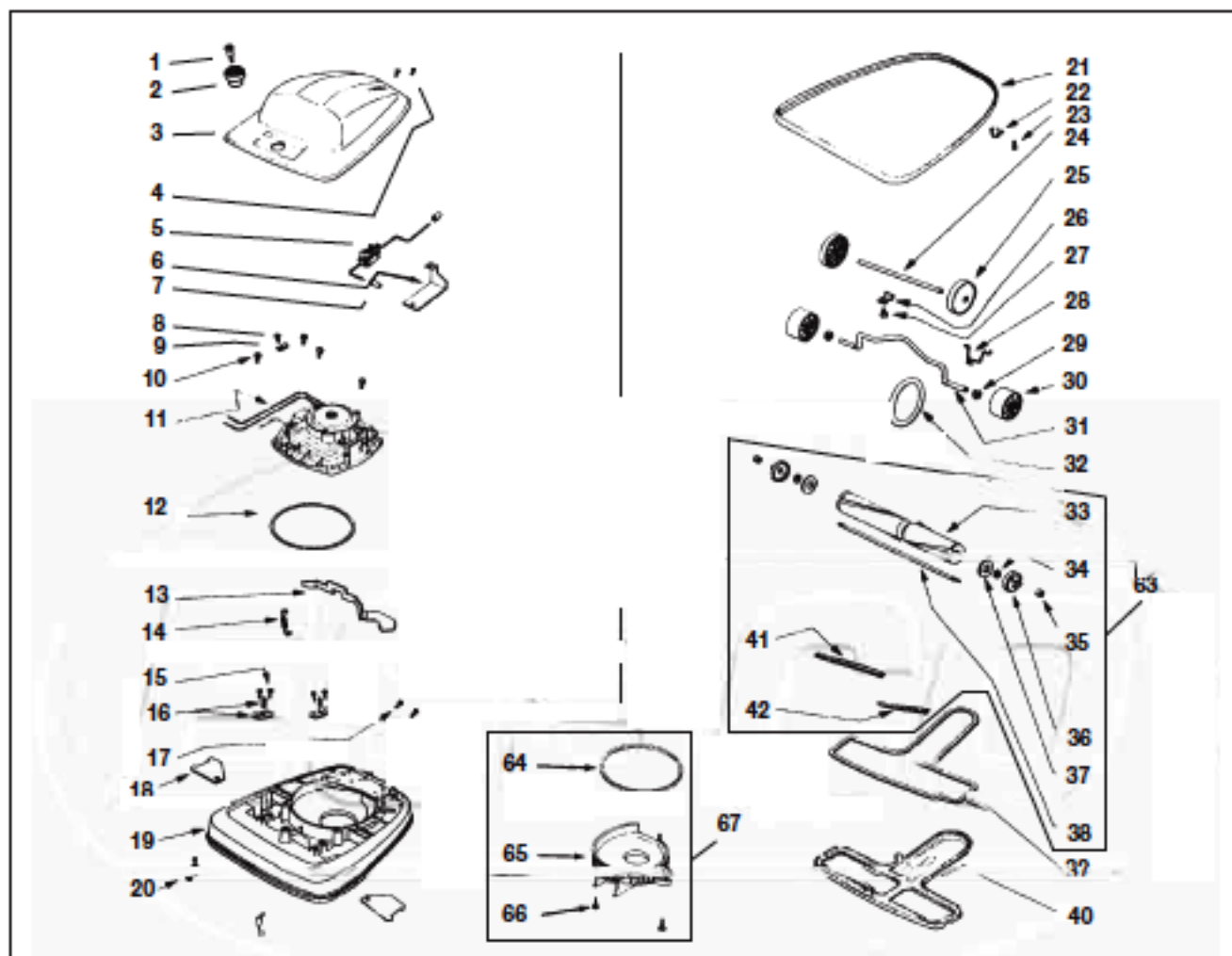
----- Manual continues below part list -----

Available Replacement Parts for Eureka 2010XRB

SU2004	GASKET KIT
e-52100	BELT VACUUM OEM EUREKA 2 PACK
ER-1000	BELT, EUREKA UPRIGHTS, 1PK

EUREKA Original & Replacement

2000 Series
Model 2010XRB Shown



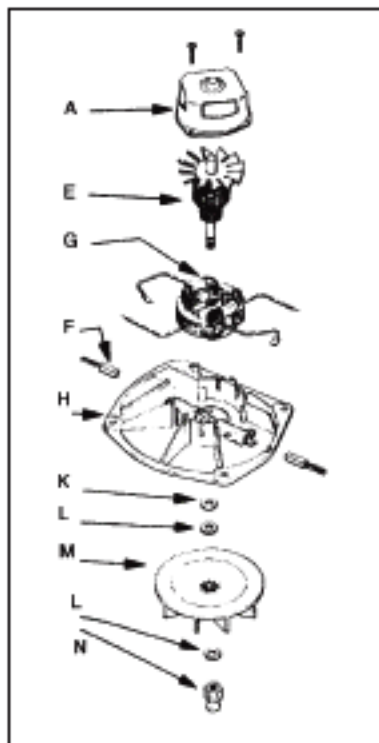
Original & Replacement

EUREKA2000 Series
Model 2010XRB Shown

KEY	PART NO.	DESCRIPTION	KEY	PART NO.	DESCRIPTION
1	E-53112-1	Shoulder Screw	33	E-35641B-1	Disturbulator Core* (Includes*)
2	E-26834-1	Adjustment Knob	34	E-46799	Washer*
3	E-47900-2	Hood & Name Plate Ass'y	35	E-48650	Nut*
	E-35620	Name Plate	36	E-24475A	End Cap*
	E-37187	4 Position Label	37	E-47714-1	Felt Washer*
	E-37200	6 Position Label	37	ER-2055	Felt Washer
4	E-EW1106P4	Switch Screw	38	E-32017	Shaft*
5	E-34825A	Rocker Switch	39	E-46538	Foam Tape**
6	E-49071	Switch Shield	40	E-25359A	Bottom Plate (Includes**)
7	E-EW22-17	Wire Nut	41	E-35638A-1	Beater Bar Long
7	SS-3270	Wire Nut	42	E-35639A-1	Beater Bar Short
8	E-EW12610P10	Motor Mounting Screw	43	E-53747-1	Cord Retainer Set, Upper & Lower
9	E-41280	Motor Wire Clip	44	E-55468-1	Screw & Nut Ass'y
10	E-EW12610P10	Motor Screw	44	ER-7700	Screw & Nut Ass'y
11	E-13356-2	Motor Ass'y, 5.0 Amp 1 Speed	45	E-35293-6	Grip*
11	E-53361-5	Motor Ass'y, 5.5 Amp 1 Speed	46	E-25329-2	Upper Handle Ass'y (Includes*)
11	E-14774-3	Motor Ass'y, 5.5 Amp 1 Speed (New Design)	47	E-53747-1	Cord Retainer Set, Upper & Lower
11	E-53366-8	Motor Ass'y 6.5 Amp 1 Speed	48	E-12637-3	Lower Handle
11	E-13706-3	Motor Ass'y, 6.5 Amp 2 Speed	49	E-36098A1	Cord Ass'y 20'
12	E-30517	Motor Gasket	49	NLA	Cord Ass'y 20' W/2 Square Sleeves
12	ER-7600	Motor Gasket	49	NLA	Cord Ass'y 30' W/2 Square Sleeves
13	E-24834-1	Foot Pedal	50	E-41064E	Support Pin
13	ER-7300	Foot Pedal	51	E-45474-4	Keps Nut
14	E-45503	Foot Pedal Spring	52	E-55468-1	Screw & Nut Ass'y
15	E-EW12610P8	Clamp Screw	52	ER-7700	Screw & Nut Ass'y
16	E-48823	Clamp & Screw	53	E-25238-1	Handle Socket
	E-48624	Set Screw	54	E-45507	Spacer
	E-47754A	Front Axle Clamp	55	E-EW3512P03	Screw
17	E-EW351010	Adapter Screw	56	E-EW181-7C	Hair Cotter Pin
18	E-36263	Wheel Cover	57	E-45504	Bushing
19	E-53425-9	Base Ass'y, Quick Clean Red	58	E-EW12610P6	Screw
19	E-53456-13	Base Ass'y, Quick Clean White	59	E-36439	Handle Socket Shield
	E-47852	Disturbulator Spring L.H.	60	E-EW12610P10	Screw
	E-48186	Disturbulator Spring R.H.	61	E-48877	Bracket Ass'y
	E-47851	Rivet	62	E-36264-1	Handle Socket Ass'y
	E-24964	Cam R.H.	62	ER-7000	Handle Socket Ass'y
	E-24965	Cam L.H.	63	E-53395	Brushroll, Square End VGI
	E-47854	Rivet	63	E-35624A1	Brushroll, Square End VGII
20	E-47853	Hood Spring	63	ER-2010	Brushroll, Square End Wood
20	ER-7705	Hood Spring	63	E-53350-1	Brushroll, Wood Hex End
21	E-34824-4	Furniture Guard	63	E-53272	Brushroll, VGI Hex End W/Ball Bearings
21	ER-7410	Furniture Guard	63	ER-2002	Brushroll, Wood Hex End
22	E-48869	Clip	63	ER-2004	Brushroll, All Bristle
23	E-EW1268P5	Clip Screw	64	E-30517	Motor Seal Gasket
24	E-47562	Rear Axle	64	ER-7600	Motor Seal Gasket
25	E-35858-1	Rear Wheel	65	E-13770-1	*Fan Chamber Cover
26	E-47586	Axle Clip	66	E-53238-17	*Screw
27	E-EW12610P6	Clip Screw	67	E-52334	* Fan Chamber Replacement Kit Includes*
28	E-35576	Axle Spring			
29	E-47585	Washer			
30	E-35859-1	Front Wheel			
31	E-35947	Front Axle			
32	E-30563A	Belt			
32	E-52100	Belt 2 Pk.			
32	ER-1000	Belt (ESSCO)			
32	ER-1010	Belt			

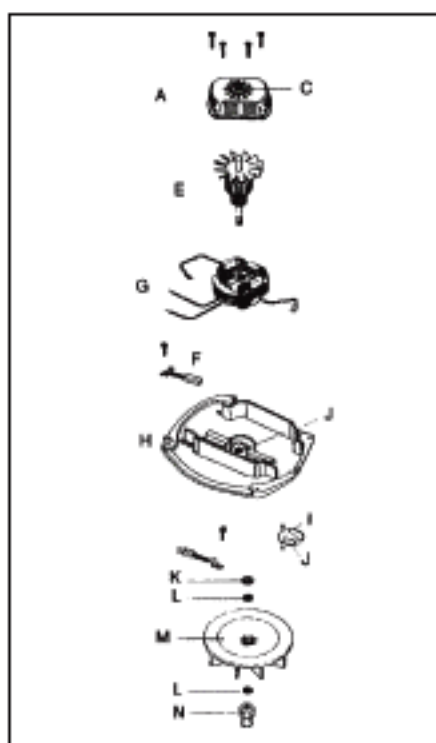
Original & Replacement **EUREKA**

Upright Motor Schematics



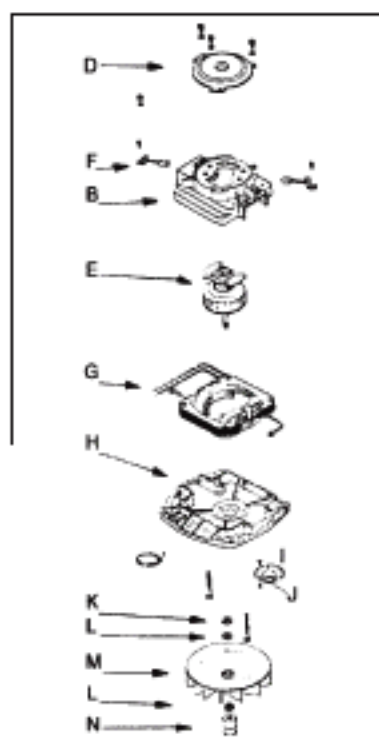
1400 Series
4.0 Amp
Ball/Sleeve
1-Speed

MOTOR ASSY	E-53349-4
A Motor Cover w/Bearing	E-54172
B Motor Cover Less Bearing	
C Top Bearing (Ball)	
D Top Bearing Retainer	
E Armature Ass'y	NLA
F Carbon Brush Ass'y	E-25172A1
G Field Ass'y	NLA
H Motor Base Ass'y	E-54171-1
I Lower Bearing Kit	
J Lower Bearing Only	
K Washer (Metal)	E-53188-1
L Fan Washer (Fiber)	E-49017
M Fan	E-12988-1 ER-2800
N Fan Pulley	E-37012
Cooling Fan	
Motor Cover Screw	E-53131-1
Carbon Brush Screw	



2000 & 7000 Series, Ultra & Sanitaires

5.5 Amp Ball/Sleeve 1-Speed	5.0 Amp Ball/Ball 1-Speed	6.5 Amp Ball/Ball 1-Speed	6.5 Amp Ball/Ball 2-Speed
E-53361-5	E-53361-5	E-53361-1	NLA
E-25863	E-25863		
		E-13746-1	E-13746-1
E-53088-1 FA-6200	E-53088-1 FA-6200	E-53088-1 FA-6200	E-53088-1 FA-6200
NLA	NLA	NLA	NLA
E-26055	E-26055	E-26055	E-26055
NLA	NLA	E-53480-1	NLA
NLA	NLA	NLA	NLA
E-54412 ER-6210	E-54412 ER-6210	E-54412 ER-6210	E-54412 ER-6210
E-53088-1 FA-6200	E-53088-1 FA-6200	E-53088-1 FA-6200	E-53088-1 FA-6200
E-53188-1	E-53188-1	E-53188-1	E-53188-1
E-49017	E-49017	E-49017	E-49017
E-12988-1 ER-2800	E-12988-1 ER-2800	E-12988-1 ER-2800	E-12988-1 ER-2800
NLA	E-53084	NLA	NLA
NLA	NLA	NLA	NLA
E-53131-2	E-53131-2	E-53131-2	E-53131-2
E-53192	E-53192	E-53192	E-53192



2000 Series Sanitaires **5000 Series Self-Propelled**
6.5/7 Amp
Ball/Ball
1-Speed

6.5/7 Amp Ball/Ball 1-Speed	6.7 Amp Ball/Ball 1-Speed	6.7 Amp Ball/Ball 2-Speed
E-53366-8	E-53390-7	NLA
E-54159	E-54159	E-54159
E-53088-1 FA-6200	E-53088-1 FA-6200	E-53088-1 FA-6200
E-20217E	E-20217E	E-20217E
E-53353-3	E-54425-1	NLA
E-30478 ER-6310	E-30478 ER-6310	E-30478 ER-6310
E-53441-2	NLA	NLA
E-54169-1	NLA	NLA
E-54412 ER-6210	E-54412 ER-6210	E-54412 ER-6210
E-53088-1 FA-6200	E-53088-1 FA-6200	E-53088-1 FA-6200
E-53188-1	E-53188-1	E-53188-1
E-49017	E-49017	E-49017
E-12988 ER-2805	E-12988 ER-2805	E-12988 ER-2805
E-37012	E-53185	E-53185
E-30474A	E-30474A	E-30474A
E-53138	E-53138	E-53138
E-53192-2	E-53192-2	E-53192-2