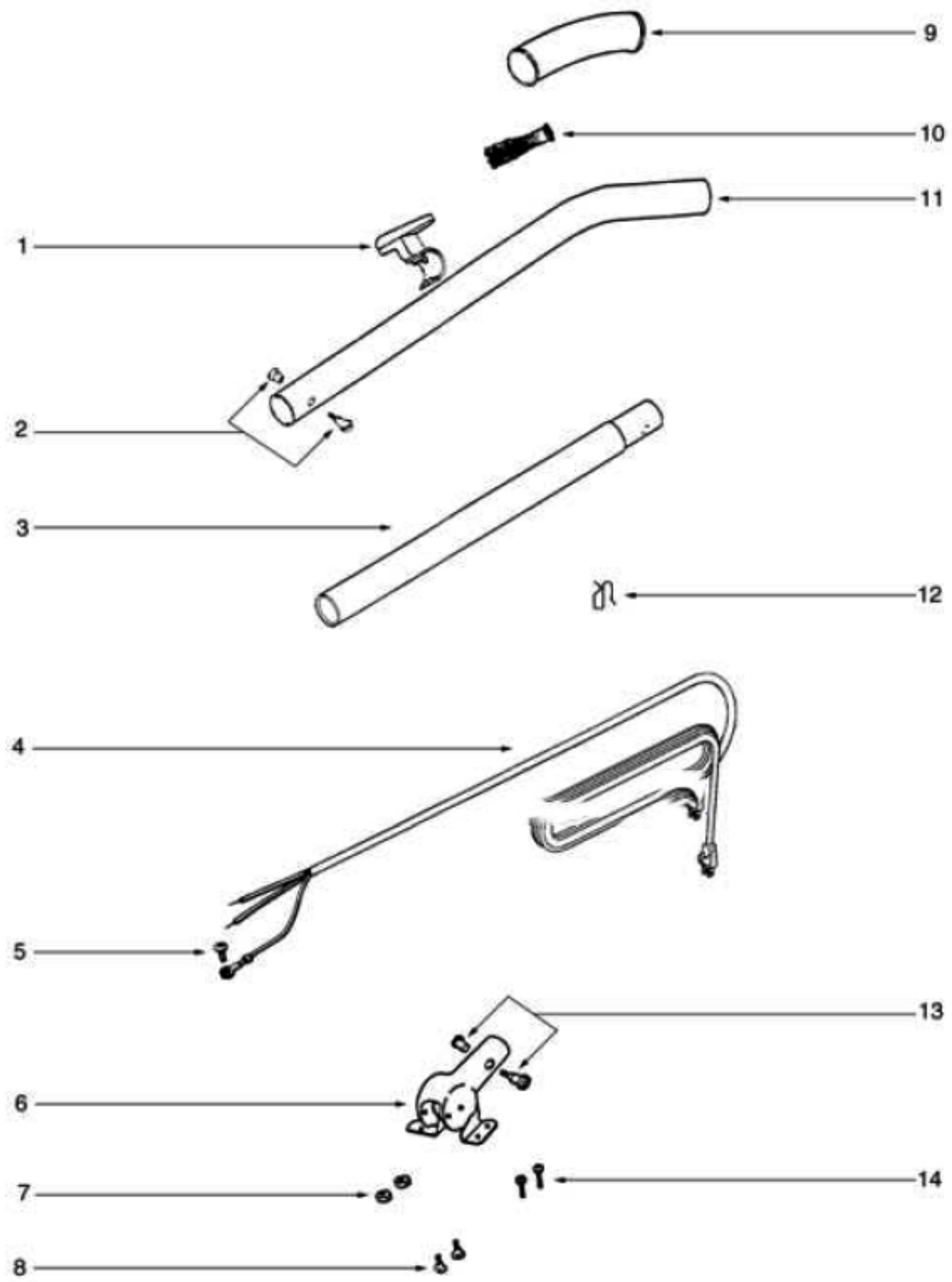
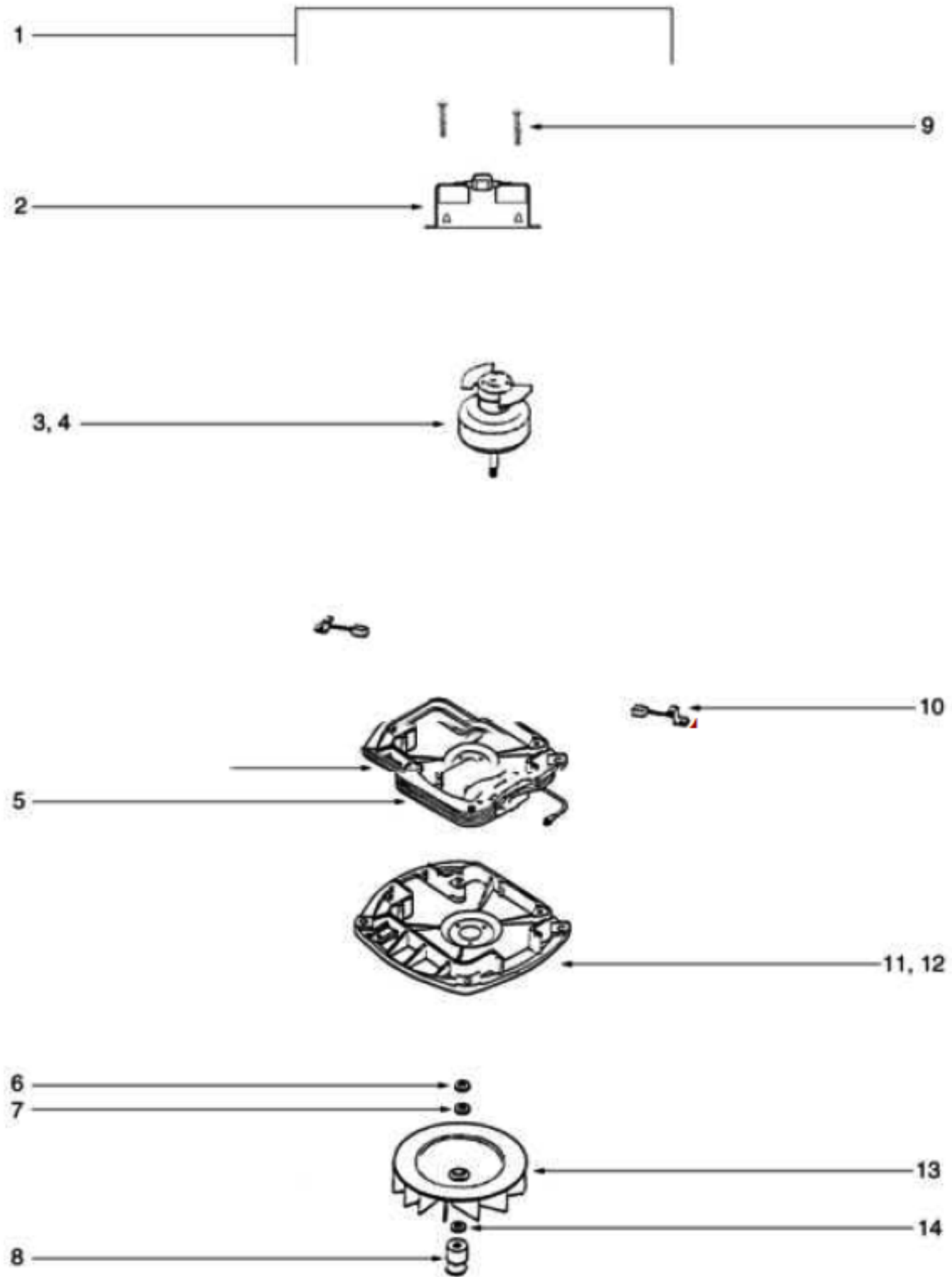


Ref #	Part	Description	Comments	Qty
1	28504-1	GUARD - FURNITURE		
2	53121	PUSH NUT PACKAGE (10)		
3	37183	AXLE - REAR		
4	53238-11	SCREW PACKAGE		
5	35947A	AXLE - FRONT		
6	26059A	CAP - COVER		
7	54104-1	DISTURBULATOR REPLACEMENT		
8	60161	WHEEL & AXLE ASSY		
9	26242-119N	WHEEL - REAR		
10	53201	CLAMPS - PACKAGE 10		
11	53076-2	SPRING & AXLE PACKAGE (6)		
12	35859A-1	WHEEL - FRONT		
13	52100A	BELT PKG ASSY (UPRIGHT)		
14	25922-1	BOTTOM PLATE ASSEMBLY		

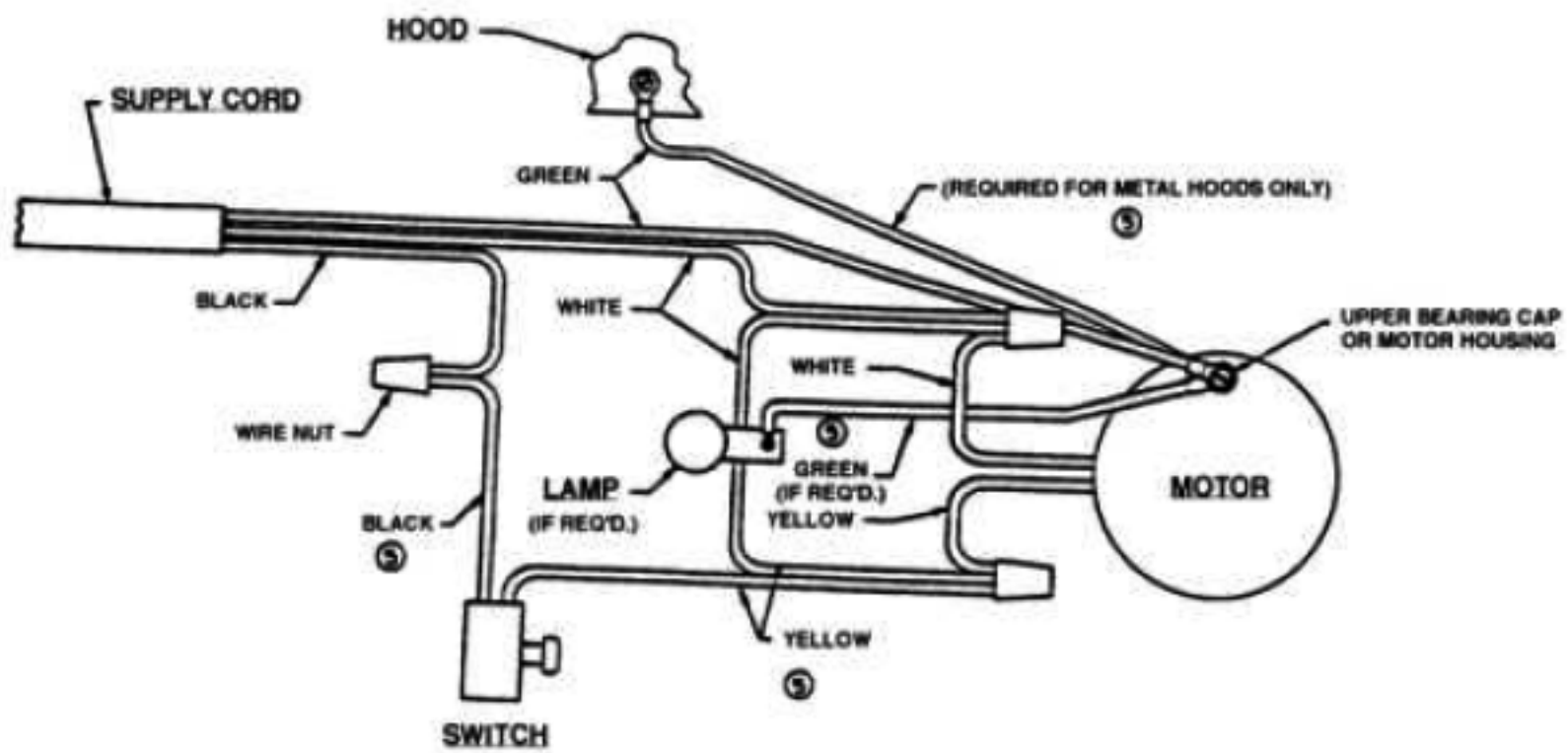
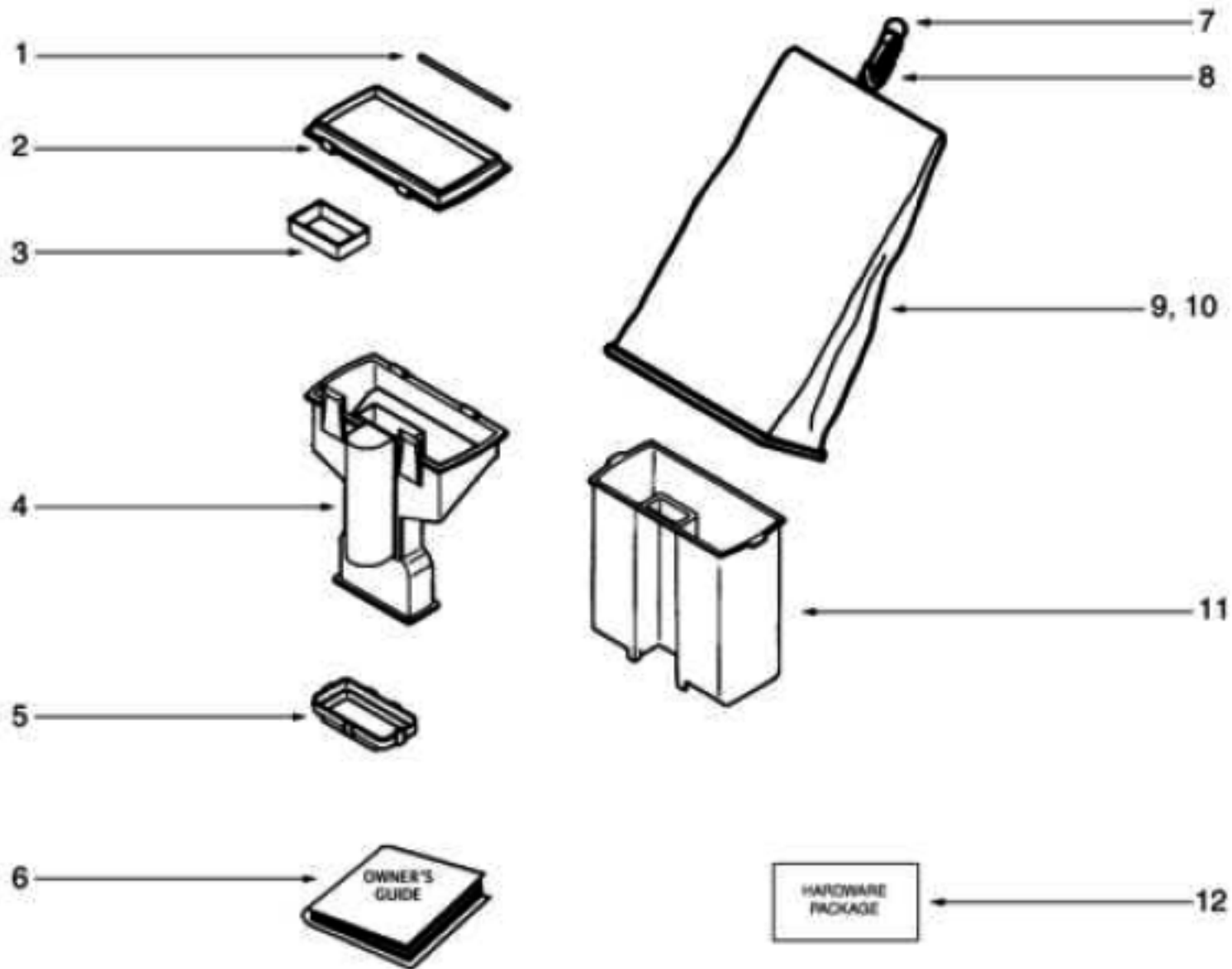
Ref #	Part	Description	Comments	Qty
1	53143	SCREW PACKAGE (10)		
2	38053-2	KNOB ASSEMBLY		
3	54005-27	HOOD ASSEMBLY - PACKAGED		
4	53238-11	SCREW PACKAGE		
5	57687-1	CLAMP - CABLE		
6	53238-14	SCREW PACKAGE		
7	53349-8	MOTOR ASSEMBLY - CARTONED		
8	53228-2	SCREWS - PACKAGE 10		
9	55296	WIRE & TERMINAL ASSEMBLY		
10	53213-1	NUTS - PACKAGE 10		
11	53238-13	SCREW PACKAGE		
12	53140	CLAMP & SCREW ASSY PKG		
13	36263	COVER - WHEEL		
14	54408-5	BASE ASSEMBLY - 12" - CAR		
15	24964A-1	CAM (RIGHT)		
16	24965A-1	CAM (LEFT)		
17	53118	RIVET - SHOULDER PACKAGE		
18	53133	STEEL WASHERS - PACKAGE 1		
19	53215-5	SCREW PACKAGE		
20	38218-1	BRACKET - BUSHING		
21	53122	STRAIN RELIEF BUSHING - P		
22	26808-3	BUTTON - SWITCH		
23	37989	CLIP - SWITCH		
24	60192-1	WIRE SPLICE 5		
25	13738-5	SWITCH ASSEMBLY		
26	38314SV	SEPARATOR ASSEMBLY		
27	30517	GASKET - MOTOR SEAL		
28	24834A-3	PEDAL - FOOT		
29	53097	SPRING - FOOT PEDAL PKG (
30	38288-1	CLAMP - BELLOWS		
31	14763-1	BELLOWS		



Ref #	Part	Description	Comments	Qty
1	14766-2	RETAINER - CORD (UPPER)		
2	53198-1	HANDLE SCREW ASSY PACKAGE		
3	27261-2	TUBE - HANDLE (LOWER)		
4	52370-14	CORD & TERMINAL ASSY 30 8		
5	53238-13	SCREW PACKAGE		
6	38183-1SV	HANDLE SOCKET ASSEMBLY		
7	53213-5	NUTS - PACKAGE 10		
8	53145	BOLT PACKAGE (10)		
9	35293-6	GRIP - HANDLE		
10	53077	SPRING - STRAIN RELIEF PK		
11	25329-35	HANDLE ASSY (UPPER)		
12	55015	CLIP - WIRE		



Ref #	Part	Description	Comments	Qty
1	53349-8	MOTOR ASSEMBLY - CARTONED		
2	54768	FAN END HOUSING - LABELED		
3	53470-3	ARMATURE - CARTONED		
4	26136	FAN		
5	53901-2	FIELD ASSEMBLY - PKG		
6	54811	FAN WASHER - PACKAGED		
7	53148	WASHER - FAN PACKAGE (10)		
8	37012-2	PULLEY - MOTOR DRIVE		
9	53131-1	SCREW PACKAGE (10)		
10	25172A-1	MOTOR BRUSH ASSEMBLY		
11	54171-1	MOTOR BASE ASSEMBLY		
12	53088-5	BALL BEARING - PACKAGE		
13	12988-1	FAN BLOWER - MOTOR		



36575 WIRING DIAGRAM

Ref #	Part	Description	Comments	Qty
1	55399-1	PIN COVER		
2	14765-1	FLANGE - BAG (OUTER)		
3	38289	GASKET		
4	54561-1	DIRT CUP SUPPORT		
5	26266-2	CLAMP		
6	57801C	OWNER'S GUIDE		
7	57711	RING STEEL		
8	57686-1	HOOK - SNAP		
9	54422-7	BAG ASSEMBLY - PACKAGED		
10	58223	GASKET - DIRTCUP		
11	01959-313N	DIRT CUP		
12	60122-1	DIRT CUP ASSY		
13	57838A	HARDWARE PACKAGE - DIRT C		