

This Owner's Manual is provided and hosted by [Appliance Factory Parts](http://ApplianceFactoryParts.com).



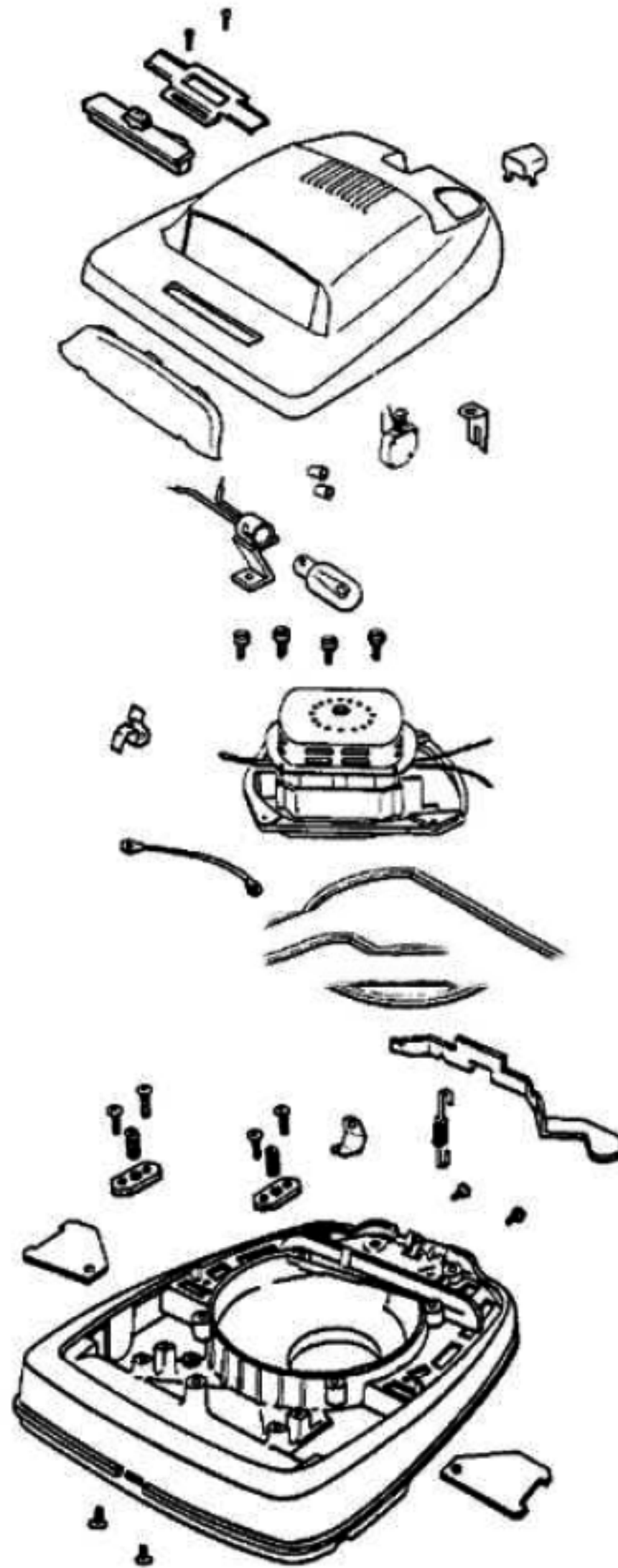
Eureka 2134A Owner's Manual

[Shop genuine replacement parts for Eureka 2134A](#)



[Find Your Eureka Vacuum Cleaner Parts - Select From 855 Models](#)

----- Manual continues below -----

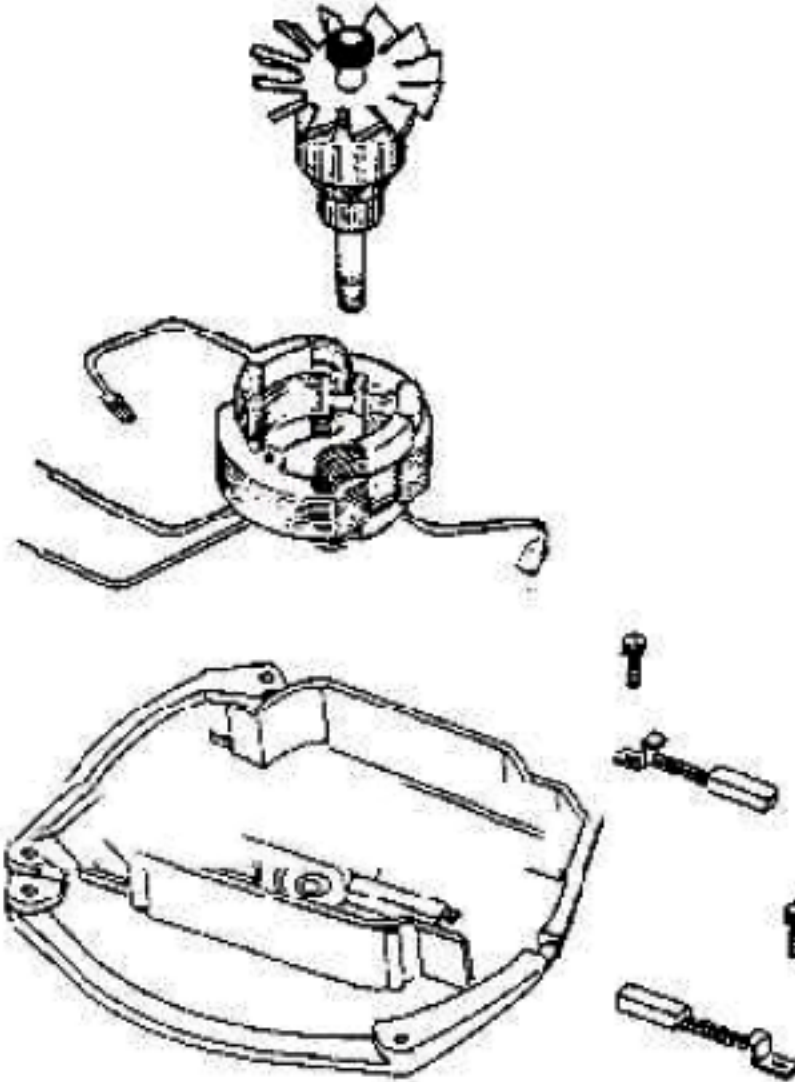


49089-17 BASE ASS'Y.
24984A CAM (RH)
24985A CAM (LH)
53118 RIVET (PKG. OF 10)
53133 WASHER (PKG. OF 10)

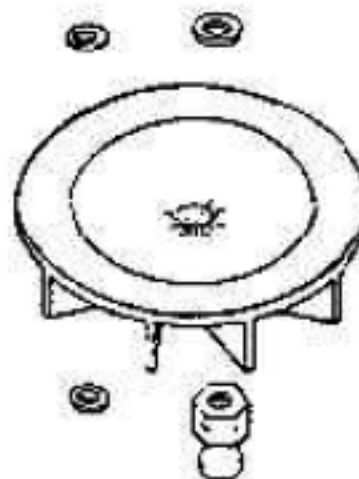
Ref #	Part	Description	Comments	Qty
1	13738-5	SWITCH ASSEMBLY		
2	24834A-1	PEDAL - FOOT		
3	24866A-5	SLIDE - ADJUSTMENT		
4	24964A	CAM (RIGHT)		
5	24965A	CAM (LEFT)		
6	25729A-6	COVER - SLIDE		
7	26307	TIE - CABLE (PURCHASED)		
8	26808-2	BUTTON - SWITCH		
9	30517	GASKET - MOTOR SEAL		
10	35958A	HEADLAMP SOCKET ASSEMBLY		
11	36263	COVER - WHEEL		
12	37590	BRACKET - BUSHING		
13	37989	CLIP - SWITCH		
14	40009A	LAMP - HEADLIGHT		
15	49069-17	BASE ASSEMBLY - CARTONED		
16	53097	SPRING - FOOT PEDAL PKG (
17	53118	RIVET - SHOULDER PACKAGE		
18	53133	STEEL WASHERS - PACKAGE 1		
19	53140	CLAMP & SCREW ASSY PKG		
20	53147	SCREW PACKAGE (10)		
21	53214-1	WIRE SPLICE 5		
22	53238-13	SCREW PACKAGE		
23	53238-17	SCREW PACKAGE		
24	55296	WIRE & TERMINAL ASSEMBLY		
25	EW126-10-10CC	SCREWS - PACKAGE 10		
26	EW29-8-12ZP	SCREW PACKAGE		



**25868-5 ARMATURE & FAN ASS'Y.
25860 MOTOR FAN**

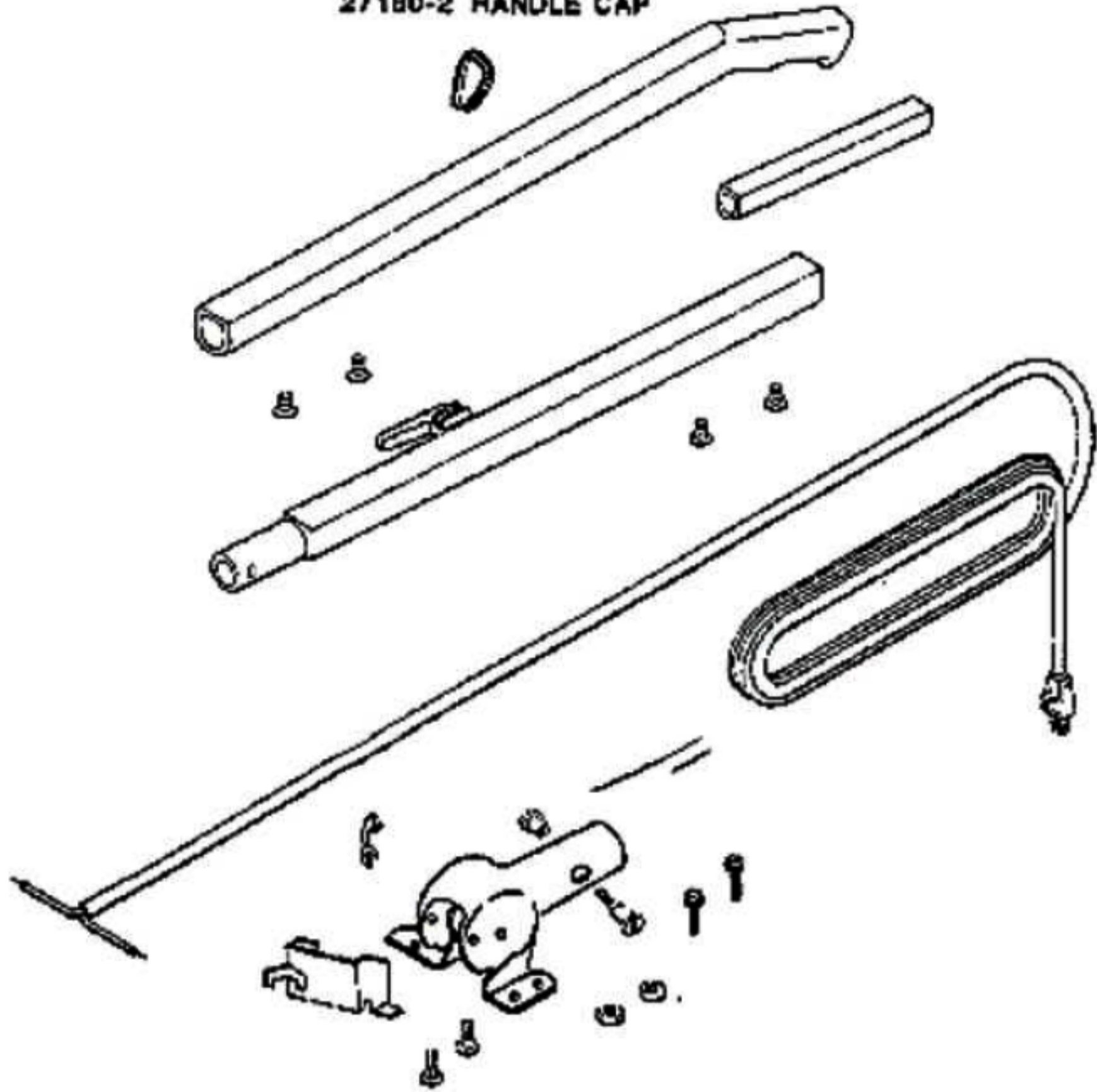


**36730 MOTOR BASE ASS'Y.
42875 BEARING RETAINER ASS'Y.
51108A-10 TUBULAR RIVET
53088-1 BEARING (Pkg. of 5)**

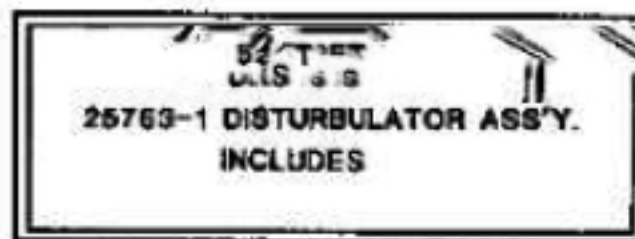
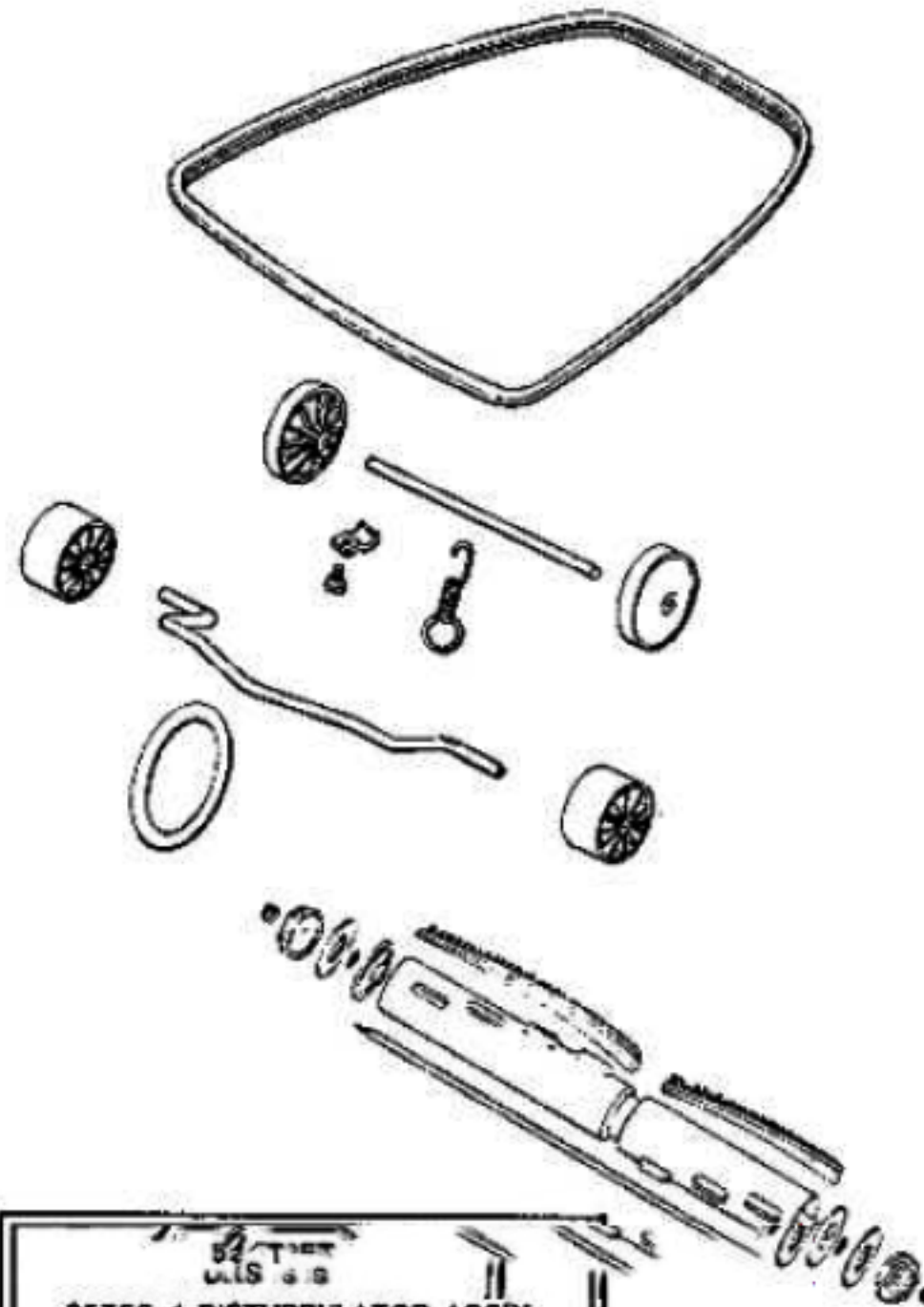


Ref #	Part	Description	Comments	Qty
1	12988-1	FAN BLOWER - MOTOR		
2	13355-1	FIELD ASSEMBLY - CARTONED		
3	13746-1	COVER - MOTOR		
4	26055	MOTOR BRUSH ASSEMBLY		
5	36993	PULLEY - MOTOR DRIVE		
6	42875	BEARING RETAINER ASSY-W/L		
7	51108A-10	RIVET PACKAGE		
8	53088-1	BALL BEARING - PACKAGE		
9	53131-2	SCREW - TORX PAN HD		
10	53148	WASHER - FAN PACKAGE (10)		
11	53188	WASHER PACKAGE		
12	54818	MOTOR KIT		

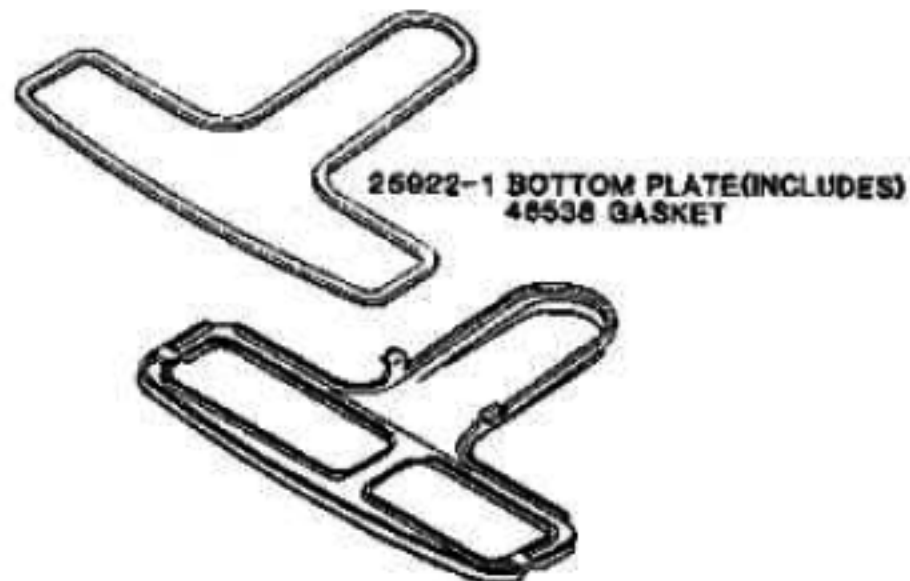
**27036-2 UPPER HANDLE ASS'Y. (INCLUDES)
27180-2 HANDLE CAP**



Ref #	Part	Description	Comments	Qty
1	01681-2	HANDLE - LOWER		
2	26659-1	CONNECTOR - HANDLE		
3	27036-2	HANDLE KIT - UPRIGHT		
4	27137-4			
5	27180-2	HANDLE KIT - UPRIGHT		
6	34732-25	CORD - LOW LEAD (18 GA)		
7	37157	SHIELD - HANDLE SOCKET		
8	53089-1	BUSHING & STRAIN RELIEF P		
9	53145	BOLT PACKAGE (10)		
10	53198-1	HANDLE SCREW ASSY PACKAGE		
11	53238-13	SCREW PACKAGE		
12	53536-3	SNAP PIN - PACKAGED		
13	EW14-10ZP	NUTS - PACKAGE 10		



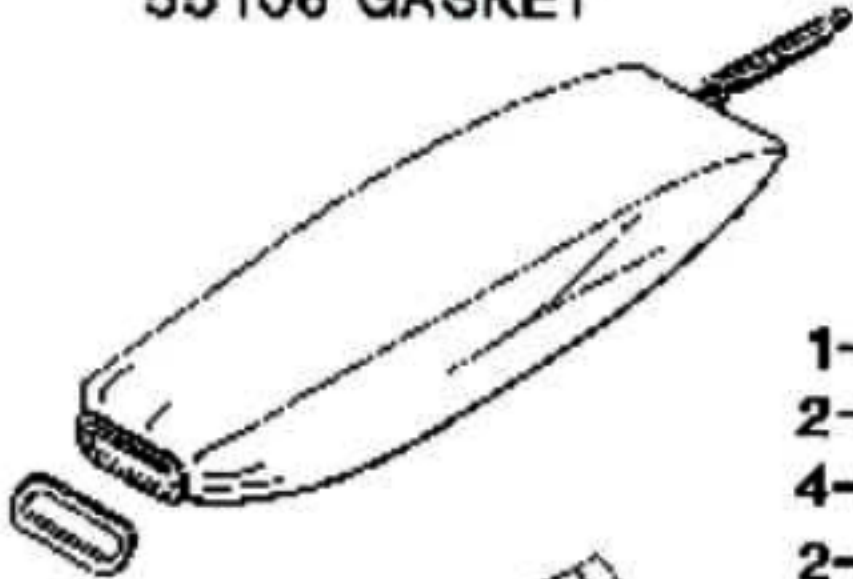
52282-3 BRISTLE STRIP SET
 13236-1 DISTURBULATOR TUBE
 53163 FELT WASHER (2 USED)
 25769A DISTURBULATOR CAP (2)
 53158 NUT (2 USED)
 53167 SHAFT WASHER (2 USED)
 38070 BEARING & RETAINER ASS'Y. (2)
 37378 SHAFT



25922-1 BOTTOM PLATE(INCLUDES)
 46536 GASKET

Ref #	Part	Description	Comments	Qty
1	13236-1	TUBE - DISTURBULATOR		
2	25759A	CAP - DISTURBULATOR		
3	25763-1	DISTURBULATOR ASSY - CART		
4	25922-1	BOTTOM PLATE ASSEMBLY		
5	35858-1	WHEEL - REAR		
6	35947A	AXLE - FRONT		
7	37378	DIST SHAFT & BRG ASSY - C		
8	46538	TAPE - FOAM		
9	47562	AXLE - REAR		
10	52282-3	BRISTLE STRIP PACKAGE		
11	53076-2	SPRING & AXLE PACKAGE (6)		
12	53111	CLIP PACKAGE (5)		
13	53158	LOCK NUT PACKAGE		
14	53167	WASHER - SHAFT PACKAGE		
15	53238-11	SCREW PACKAGE		

**52309 ADAPTER, SLEEVE & GASKET ASS'Y. (INCLUDES)
55106 GASKET**



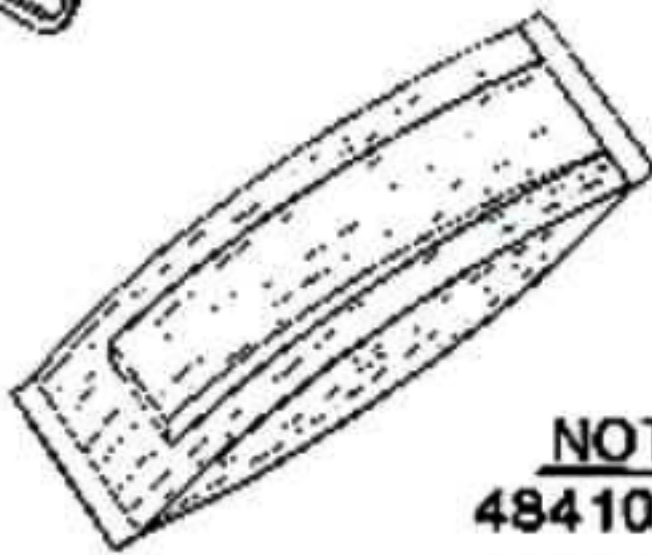
57588 HARDWARE PKG.

1-HANDLE TUBE CONNECTOR

2-HANDLE SCREW ASS'Y.

4-SNAP PIN

2-SCREW



NOT ILLUSTRATED

48410 GARTER SPRING

48801 TIE WIRE

Ref #	Part	Description	Comments	Qty
1	47722	SPRING - BAG		
2	48410	SPRING - GARTER		
3	48801	WIRE - TIE		
4	52309	ADAPTER - BAG		
5	52320	PAPER BAG PKG ASSY STYLE		
6	53977-18	BAG ASSEMBLY - PACKAGED		
7	55106	GASKET - BAG ADAPTER		
8	57588	HARDWARE PACKAGE - UPRIGH		